

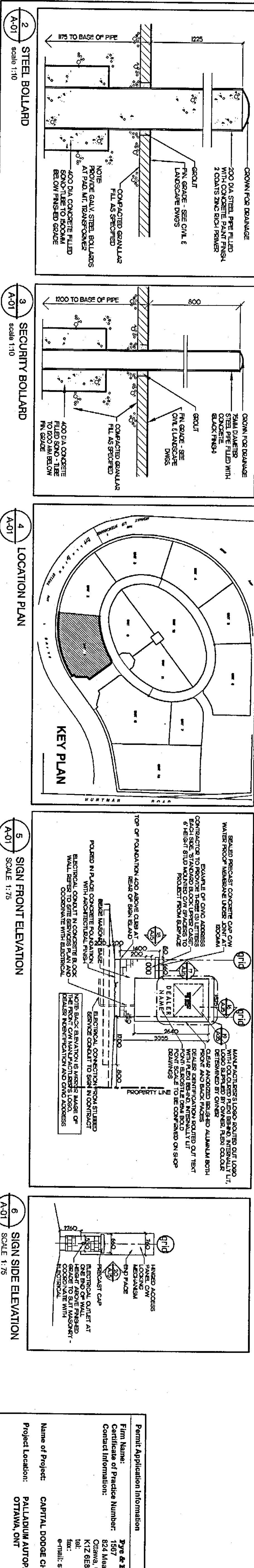
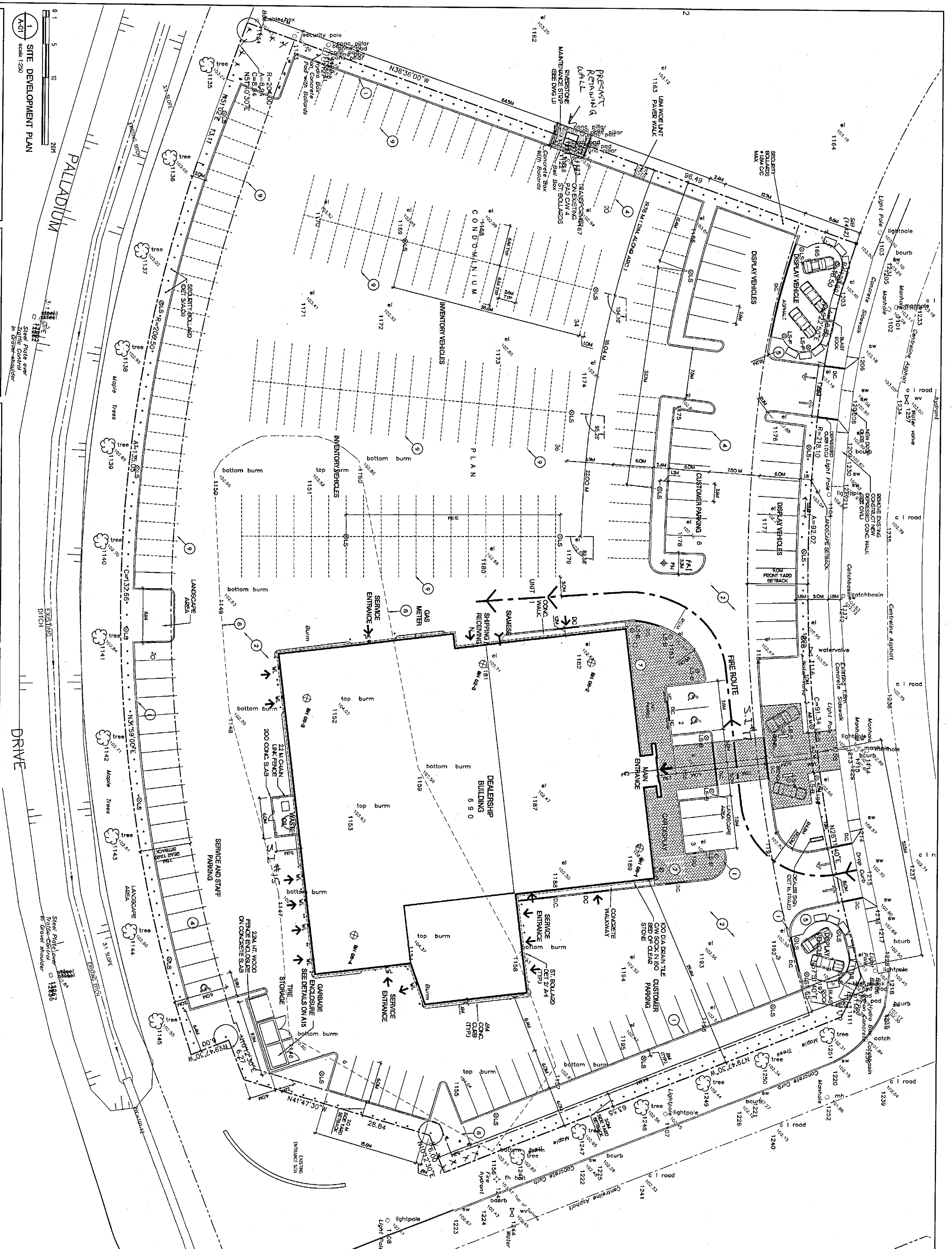
SITE PLAN NOTES

- CONCRETE CURB (SEE CIVIL DRAWING)
- ASPHALT PAVEMENT (SEE CIVIL DRAWING)
- CONCRETE WALKWAY
- PAINTED STALL LINES/PARKING
- BLAST ROCK WALL
- GAS METERS & ENCLOSURE (SEE DET. 1/1)
- CONCRETE PAVERS
- APPROX. EXTENT OF EXISTING BERM
- INVENTORY PARKING LINES (STALL LINES NOT PAINTED)

SITE LEGEND

- ⊕ FIRE HYDRANT
- ⊖ DEPRESSED CURB
- ⊙ CONCRETE CURB
- ⊙ UNIT PAVERS
- ⊙ CATCH BASIN, NEW
- ⊙ MAIN HOLE, NEW
- ⊙ FLOOR LIGHT FIXTURE
- ⊙ BOLLARD LIGHT FIXTURE
- ⊙ WALL MOUNTED LIGHT
- ⊙ POWER POLE
- ⊙ GUARD POST
- ⊙ EXISTING GRADE
- ⊙ 2.4M HT. CHAIN LINK FENCE
- ⊙ FIRE ROUTE SIGN

32 Classification
 Major Components: Group D, Group E, Group F, Group G, Group H, Group I, Group J, Group K, Group L, Group M, Group N, Group O, Group P, Group Q, Group R, Group S, Group T, Group U, Group V, Group W, Group X, Group Y, Group Z, Group AA, Group AB, Group AC, Group AD, Group AE, Group AF, Group AG, Group AH, Group AI, Group AJ, Group AK, Group AL, Group AM, Group AN, Group AO, Group AP, Group AQ, Group AR, Group AS, Group AT, Group AU, Group AV, Group AW, Group AX, Group AY, Group AZ, Group BA, Group BB, Group BC, Group BD, Group BE, Group BF, Group BG, Group BH, Group BI, Group BJ, Group BK, Group BL, Group BM, Group BN, Group BO, Group BP, Group BQ, Group BR, Group BS, Group BT, Group BU, Group BV, Group BW, Group BX, Group BY, Group BZ, Group CA, Group CB, Group CC, Group CD, Group CE, Group CF, Group CG, Group CH, Group CI, Group CJ, Group CK, Group CL, Group CM, Group CN, Group CO, Group CP, Group CQ, Group CR, Group CS, Group CT, Group CU, Group CV, Group CW, Group CX, Group CY, Group CZ, Group DA, Group DB, Group DC, Group DD, Group DE, Group DF, Group DG, Group DH, Group DI, Group DJ, Group DK, Group DL, Group DM, Group DN, Group DO, Group DP, Group DQ, Group DR, Group DS, Group DT, Group DU, Group DV, Group DW, Group DX, Group DY, Group DZ, Group EA, Group EB, Group EC, Group ED, Group EE, Group EF, Group EG, Group EH, Group EI, Group EJ, Group EK, Group EL, Group EM, Group EN, Group EO, Group EP, Group EQ, Group ER, Group ES, Group ET, Group EU, Group EV, Group EW, Group EX, Group EY, Group EZ, Group FA, Group FB, Group FC, Group FD, Group FE, Group FF, Group FG, Group FH, Group FI, Group FJ, Group FK, Group FL, Group FM, Group FN, Group FO, Group FP, Group FQ, Group FR, Group FS, Group FT, Group FU, Group FV, Group FW, Group FX, Group FY, Group FZ, Group GA, Group GB, Group GC, Group GD, Group GE, Group GF, Group GG, Group GH, Group GI, Group GJ, Group GK, Group GL, Group GM, Group GN, Group GO, Group GP, Group GQ, Group GR, Group GS, Group GT, Group GU, Group GV, Group GW, Group GX, Group GY, Group GZ, Group HA, Group HB, Group HC, Group HD, Group HE, Group HF, Group HG, Group HH, Group HI, Group HJ, Group HK, Group HL, Group HM, Group HN, Group HO, Group HP, Group HQ, Group HR, Group HS, Group HT, Group HU, Group HV, Group HW, Group HX, Group HY, Group HZ, Group IA, Group IB, Group IC, Group ID, Group IE, Group IF, Group IG, Group IH, Group II, Group IJ, Group IK, Group IL, Group IM, Group IN, Group IO, Group IP, Group IQ, Group IR, Group IS, Group IT, Group IU, Group IV, Group IW, Group IX, Group IY, Group IZ, Group JA, Group JB, Group JC, Group JD, Group JE, Group JF, Group JG, Group JH, Group JI, Group JJ, Group JK, Group JL, Group JM, Group JN, Group JO, Group JP, Group JQ, Group JR, Group JS, Group JT, Group JU, Group JV, Group JW, Group JX, Group JY, Group JZ, Group KA, Group KB, Group KC, Group KD, Group KE, Group KF, Group KG, Group KH, Group KI, Group KJ, Group KK, Group KL, Group KM, Group KN, Group KO, Group KP, Group KQ, Group KR, Group KS, Group KT, Group KU, Group KV, Group KW, Group KX, Group KY, Group KZ, Group LA, Group LB, Group LC, Group LD, Group LE, Group LF, Group LG, Group LH, Group LI, Group LJ, Group LK, Group LL, Group LM, Group LN, Group LO, Group LP, Group LQ, Group LR, Group LS, Group LT, Group LU, Group LV, Group LW, Group LX, Group LY, Group LZ, Group MA, Group MB, Group MC, Group MD, Group ME, Group MF, Group MG, Group MH, Group MI, Group MJ, Group MK, Group ML, Group MM, Group MN, Group MO, Group MP, Group MQ, Group MR, Group MS, Group MT, Group MU, Group MV, Group MW, Group MX, Group MY, Group MZ, Group NA, Group NB, Group NC, Group ND, Group NE, Group NF, Group NG, Group NH, Group NI, Group NJ, Group NK, Group NL, Group NM, Group NO, Group NP, Group NQ, Group NR, Group NS, Group NT, Group NU, Group NV, Group NW, Group NX, Group NY, Group NZ, Group OA, Group OB, Group OC, Group OD, Group OE, Group OF, Group OG, Group OH, Group OI, Group OJ, Group OK, Group OL, Group OM, Group ON, Group OO, Group OP, Group OQ, Group OR, Group OS, Group OT, Group OU, Group OV, Group OW, Group OX, Group OY, Group OZ, Group PA, Group PB, Group PC, Group PD, Group PE, Group PF, Group PG, Group PH, Group PI, Group PJ, Group PK, Group PL, Group PM, Group PN, Group PO, Group PP, Group PQ, Group PR, Group PS, Group PT, Group PU, Group PV, Group PW, Group PX, Group PY, Group PZ, Group QA, Group QB, Group QC, Group QD, Group QE, Group QF, Group QG, Group QH, Group QI, Group QJ, Group QK, Group QL, Group QM, Group QN, Group QO, Group QP, Group QQ, Group QR, Group QS, Group QT, Group QU, Group QV, Group QW, Group QX, Group QY, Group QZ, Group RA, Group RB, Group RC, Group RD, Group RE, Group RF, Group RG, Group RH, Group RI, Group RJ, Group RK, Group RL, Group RM, Group RN, Group RO, Group RP, Group RQ, Group RR, Group RS, Group RT, Group RU, Group RV, Group RW, Group RX, Group RY, Group RZ, Group SA, Group SB, Group SC, Group SD, Group SE, Group SF, Group SG, Group SH, Group SI, Group SJ, Group SK, Group SL, Group SM, Group SN, Group SO, Group SP, Group SQ, Group SR, Group SS, Group ST, Group SU, Group SV, Group SW, Group SX, Group SY, Group SZ, Group TA, Group TB, Group TC, Group TD, Group TE, Group TF, Group TG, Group TH, Group TI, Group TJ, Group TK, Group TL, Group TM, Group TN, Group TO, Group TP, Group TQ, Group TR, Group TS, Group TT, Group TU, Group TV, Group TW, Group TX, Group TY, Group TZ, Group UA, Group UB, Group UC, Group UD, Group UE, Group UF, Group UG, Group UH, Group UI, Group UJ, Group UK, Group UL, Group UM, Group UN, Group UO, Group UP, Group UQ, Group UR, Group US, Group UT, Group UY, Group UZ, Group VA, Group VB, Group VC, Group VD, Group VE, Group VF, Group VG, Group VH, Group VI, Group VJ, Group VK, Group VL, Group VM, Group VN, Group VO, Group VP, Group VQ, Group VR, Group VS, Group VT, Group VY, Group VZ, Group WA, Group WB, Group WC, Group WD, Group WE, Group WF, Group WG, Group WH, Group WI, Group WJ, Group WK, Group WL, Group WM, Group WN, Group WO, Group WP, Group WQ, Group WR, Group WS, Group WT, Group WY, Group WZ, Group XA, Group XB, Group XC, Group XD, Group XE, Group XF, Group XG, Group XH, Group XI, Group XJ, Group XK, Group XL, Group XM, Group XN, Group XO, Group XP, Group XQ, Group XR, Group XS, Group XT, Group XU, Group XV, Group XW, Group XY, Group XZ, Group YA, Group YB, Group YC, Group YD, Group YE, Group YF, Group YG, Group YH, Group YI, Group YJ, Group YK, Group YL, Group YM, Group YN, Group YO, Group YP, Group YQ, Group YR, Group YS, Group YT, Group YU, Group YV, Group YW, Group YX, Group YZ, Group ZA, Group ZB, Group ZC, Group ZD, Group ZE, Group ZF, Group ZG, Group ZH, Group ZI, Group ZJ, Group ZK, Group ZL, Group ZM, Group ZN, Group ZO, Group ZP, Group ZQ, Group ZR, Group ZS, Group ZT, Group ZU, Group ZV, Group ZW, Group ZX, Group ZY, Group ZZ.



PROJECT DATA

CLIENT DESCRIPTION
 CAPITAL DODGE CHRYSLER
 MORLEY HOPPER

PROJECT LOCATION
 2500 PALLODUM AUTOPARK, UNIT 1200
 OTTAWA, ONTARIO

DESIGNER
 P & R ARCHITECTS
 844 ELIZABETH STREET, OTTAWA, ONTARIO K1R 6B9
 TEL: 613 794-7700 FAX: 613 794-1989
 EMAIL: p_r_architects@p_r_architects.com

PERMIT APPLICATION INFORMATION

Firm Name: P & R ARCHITECTS
1597
624 Main Street
OTTAWA, ONTARIO
K1R 6B9
(613) 724-7700
(613) 724-1989
email: info@p_r_architects.com

Name of Project: CAPITAL DODGE CHRYSLER
Project Location: PALLODUM AUTOPARK, OTTAWA, ONT.

Scale: AS INDICATED

DRAWING NO.: A.01

DATE: 05 SEP 2006

REVISION NO.: 01

REVISION: 01

PROJECT NORTH

RECEIVED

ISSUED FOR CONSTRUCTION 05 SEP 2006

SITE PLAN REVISIONS

| NO. | DESCRIPTION | DATE |
|-----|----------------------------|--------------|
| 1 | ISSUED FOR PERMIT | 11 JULY 2006 |
| 2 | ISSUED FOR BUILDING PERMIT | 23 JUN 2006 |
| 3 | ISSUED FOR SIGN SUBMISSION | 05 JUN 2006 |
| 4 | RE-DESIGN | 04 MAY 2006 |
| 5 | NO. ISSUE & REVISIONS | 13 APR 06 |

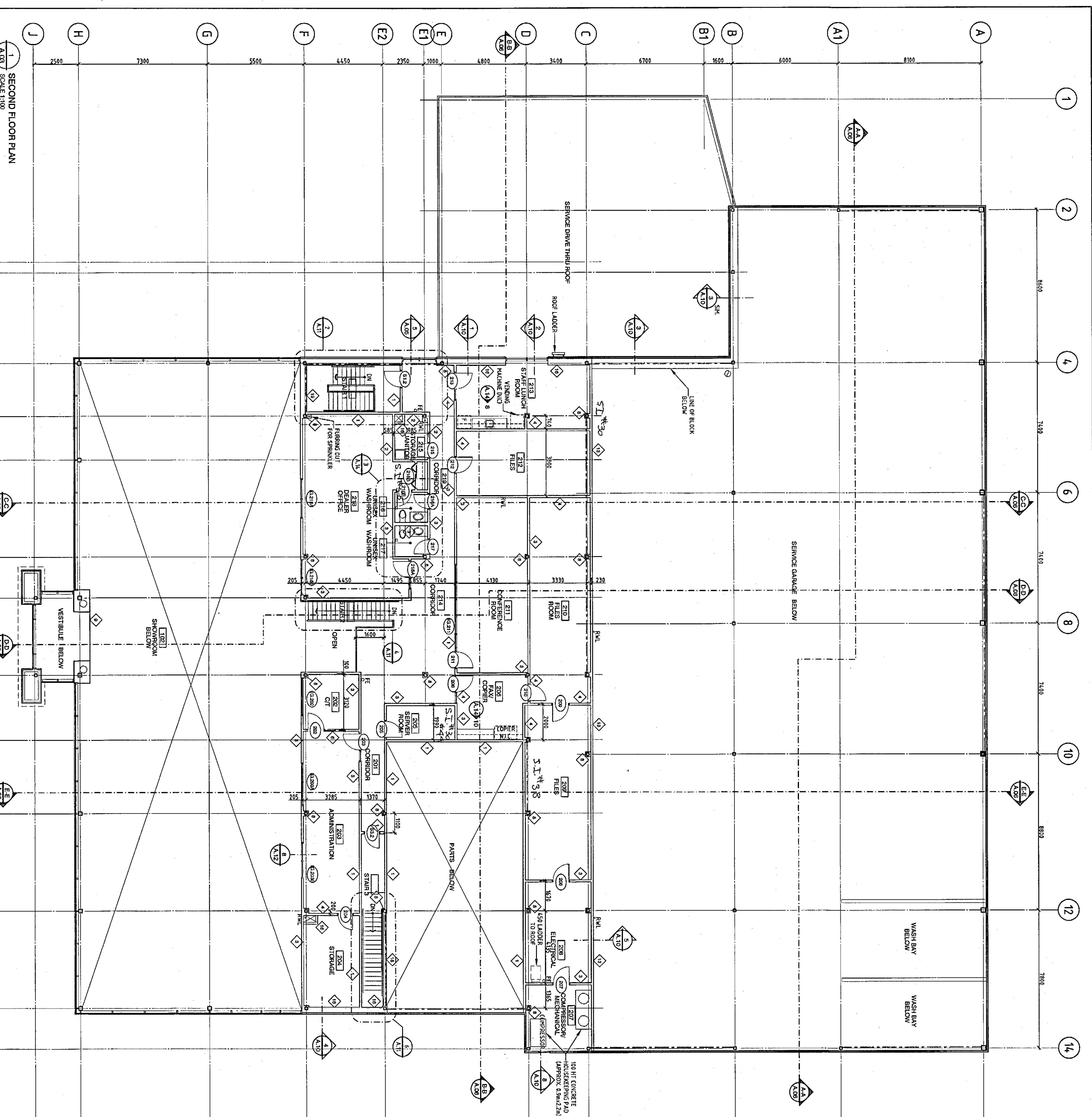
GENERAL NOTES:

- A EXTEND ALL WALL PARTITIONS TO U/S FLOOR OR ROOF DECK, UNLESS OTHERWISE NOTED
- B WHERE STEEL BEAMS/O.M.S. INTERFERE WITH REQUIRED FULL HEIGHT CONCRETE BLOCK WALLS REMOVE NON-GYPSUM BOARD ON 12mm STEEL STUDS SEPARATION USE TWO LAYERS OF TYPE "X" GYPSUM BOARD EACH SIDE WHERE FRIEATED
- C REFER TO MECHANICAL DRAWINGS FOR TRANSFER OPENINGS IN CONCRETE BLOCK WALLS GYPSUM BOARD PARTITIONS ABOVE CEILING
- D REMOVE APPROXIMATE STEEL FRAMING AT ALL OUTSTANDING JOINT HEADS FOR BLOCK, MOTOR & SPRING ASSEMBLIES
- E PARTITIONS DIMENSIONED TO CENTRELINE OF STUDS, BLOCK WALLS TOP/BE OF WALL
- F USE MOISTURE RESISTANT GYPSUM BOARD ON WALLS OF WASHROOMS & JANITOR ROOM

- 22R REINFORCED WALL, ALL HEIGHT HEIGHT EXTENDING TO U/S STEEL DECK ABOVE. FIRE STOP WHERE FIRE SEPARATION SHOWN.
- 22R CONCRETE BLOCK WALL EXTENDING TO U/S STEEL DECK
- 19R CONCRETE BLOCK WALL TO 3000 HI.
- 22R REINFORCED WALL
- 16R TYPE X GYPSUM BOARD
- 15R TYPE X GYPSUM BOARD
- 14R TYPE X GYPSUM BOARD
- 13R TYPE X GYPSUM BOARD
- 12R TYPE X GYPSUM BOARD
- 11R TYPE X GYPSUM BOARD
- 10R TYPE X GYPSUM BOARD
- 9R TYPE X GYPSUM BOARD
- 8R TYPE X GYPSUM BOARD
- 7R TYPE X GYPSUM BOARD
- 6R TYPE X GYPSUM BOARD
- 5R TYPE X GYPSUM BOARD
- 4R TYPE X GYPSUM BOARD
- 3R TYPE X GYPSUM BOARD
- 2R TYPE X GYPSUM BOARD
- 1R TYPE X GYPSUM BOARD

- 22R REINFORCED WALL, ALL HEIGHT HEIGHT EXTENDING TO U/S STEEL DECK ABOVE. FIRE STOP WHERE FIRE SEPARATION SHOWN.
- 22R CONCRETE BLOCK WALL EXTENDING TO U/S STEEL DECK
- 19R CONCRETE BLOCK WALL TO 3000 HI.
- 22R REINFORCED WALL
- 16R TYPE X GYPSUM BOARD
- 15R TYPE X GYPSUM BOARD
- 14R TYPE X GYPSUM BOARD
- 13R TYPE X GYPSUM BOARD
- 12R TYPE X GYPSUM BOARD
- 11R TYPE X GYPSUM BOARD
- 10R TYPE X GYPSUM BOARD
- 9R TYPE X GYPSUM BOARD
- 8R TYPE X GYPSUM BOARD
- 7R TYPE X GYPSUM BOARD
- 6R TYPE X GYPSUM BOARD
- 5R TYPE X GYPSUM BOARD
- 4R TYPE X GYPSUM BOARD
- 3R TYPE X GYPSUM BOARD
- 2R TYPE X GYPSUM BOARD
- 1R TYPE X GYPSUM BOARD

- 22R REINFORCED WALL, ALL HEIGHT HEIGHT EXTENDING TO U/S STEEL DECK ABOVE. FIRE STOP WHERE FIRE SEPARATION SHOWN.
- 22R CONCRETE BLOCK WALL EXTENDING TO U/S STEEL DECK
- 19R CONCRETE BLOCK WALL TO 3000 HI.
- 22R REINFORCED WALL
- 16R TYPE X GYPSUM BOARD
- 15R TYPE X GYPSUM BOARD
- 14R TYPE X GYPSUM BOARD
- 13R TYPE X GYPSUM BOARD
- 12R TYPE X GYPSUM BOARD
- 11R TYPE X GYPSUM BOARD
- 10R TYPE X GYPSUM BOARD
- 9R TYPE X GYPSUM BOARD
- 8R TYPE X GYPSUM BOARD
- 7R TYPE X GYPSUM BOARD
- 6R TYPE X GYPSUM BOARD
- 5R TYPE X GYPSUM BOARD
- 4R TYPE X GYPSUM BOARD
- 3R TYPE X GYPSUM BOARD
- 2R TYPE X GYPSUM BOARD
- 1R TYPE X GYPSUM BOARD



1 SECOND FLOOR PLAN
SCALE 1:100

P&R ARCHITECTS
2880 PALUQUON AUTOPARK, UNIT 1200
OTTAWA, ONTARIO

PROJECT:
CAPITAL DODGE CHRYSLER
MORLEY HOPPNER

DRAWING NO.:
A.03

DATE:
14 MAY 2006

| NO. | ISSUE & REVISIONS | DATE |
|-----|---------------------------|-------------|
| 1 | ISSUE FOR CONSTRUCTION | 15 SEP 2005 |
| 2 | ISSUE FOR TENDERS | 23 JAN 2006 |
| 3 | ISSUE FOR BUILDING PERMIT | 15 JAN 2006 |
| 4 | ISSUE FOR CONSTRUCTION | 14 MAY 2006 |

| NO. | ISSUE & REVISIONS | DATE |
|-----|---------------------------|-------------|
| 1 | ISSUE FOR CONSTRUCTION | 15 SEP 2005 |
| 2 | ISSUE FOR TENDERS | 23 JAN 2006 |
| 3 | ISSUE FOR BUILDING PERMIT | 15 JAN 2006 |
| 4 | ISSUE FOR CONSTRUCTION | 14 MAY 2006 |

| NO. | ISSUE & REVISIONS | DATE |
|-----|---------------------------|-------------|
| 1 | ISSUE FOR CONSTRUCTION | 15 SEP 2005 |
| 2 | ISSUE FOR TENDERS | 23 JAN 2006 |
| 3 | ISSUE FOR BUILDING PERMIT | 15 JAN 2006 |
| 4 | ISSUE FOR CONSTRUCTION | 14 MAY 2006 |

| NO. | ISSUE & REVISIONS | DATE |
|-----|---------------------------|-------------|
| 1 | ISSUE FOR CONSTRUCTION | 15 SEP 2005 |
| 2 | ISSUE FOR TENDERS | 23 JAN 2006 |
| 3 | ISSUE FOR BUILDING PERMIT | 15 JAN 2006 |
| 4 | ISSUE FOR CONSTRUCTION | 14 MAY 2006 |

| NO. | ISSUE & REVISIONS | DATE |
|-----|---------------------------|-------------|
| 1 | ISSUE FOR CONSTRUCTION | 15 SEP 2005 |
| 2 | ISSUE FOR TENDERS | 23 JAN 2006 |
| 3 | ISSUE FOR BUILDING PERMIT | 15 JAN 2006 |
| 4 | ISSUE FOR CONSTRUCTION | 14 MAY 2006 |

| NO. | ISSUE & REVISIONS | DATE |
|-----|---------------------------|-------------|
| 1 | ISSUE FOR CONSTRUCTION | 15 SEP 2005 |
| 2 | ISSUE FOR TENDERS | 23 JAN 2006 |
| 3 | ISSUE FOR BUILDING PERMIT | 15 JAN 2006 |
| 4 | ISSUE FOR CONSTRUCTION | 14 MAY 2006 |

| NO. | ISSUE & REVISIONS | DATE |
|-----|---------------------------|-------------|
| 1 | ISSUE FOR CONSTRUCTION | 15 SEP 2005 |
| 2 | ISSUE FOR TENDERS | 23 JAN 2006 |
| 3 | ISSUE FOR BUILDING PERMIT | 15 JAN 2006 |
| 4 | ISSUE FOR CONSTRUCTION | 14 MAY 2006 |

| NO. | ISSUE & REVISIONS | DATE |
|-----|---------------------------|-------------|
| 1 | ISSUE FOR CONSTRUCTION | 15 SEP 2005 |
| 2 | ISSUE FOR TENDERS | 23 JAN 2006 |
| 3 | ISSUE FOR BUILDING PERMIT | 15 JAN 2006 |
| 4 | ISSUE FOR CONSTRUCTION | 14 MAY 2006 |