

**SURVEYOR'S REAL PROPERTY REPORT**  
**PART 1** Plan of  
**PART OF BLOCK 123**  
**REGISTERED PLAN 4M-538**  
**CITY OF OTTAWA**

Surveyed by Annis, O'Sullivan, Vollebek Ltd.

Scale 1 : 250

**Metric**  
 DISTANCES SHOWN ON THIS PLAN ARE IN METRES AND CAN BE CONVERTED TO FEET BY DIVIDING BY 0.3048

**Surveyor's Certificate**  
 I CERTIFY THAT:  
 1. This survey and plan are correct and in accordance with the Surveys Act, the Surveyors Act and the Land Titles Act and the regulations made under them.  
 2. The survey was completed on the 16th day of November, 2018.

Date: 15/11/18  
 V. Andrew Sheip  
 Ontario Land Surveyor

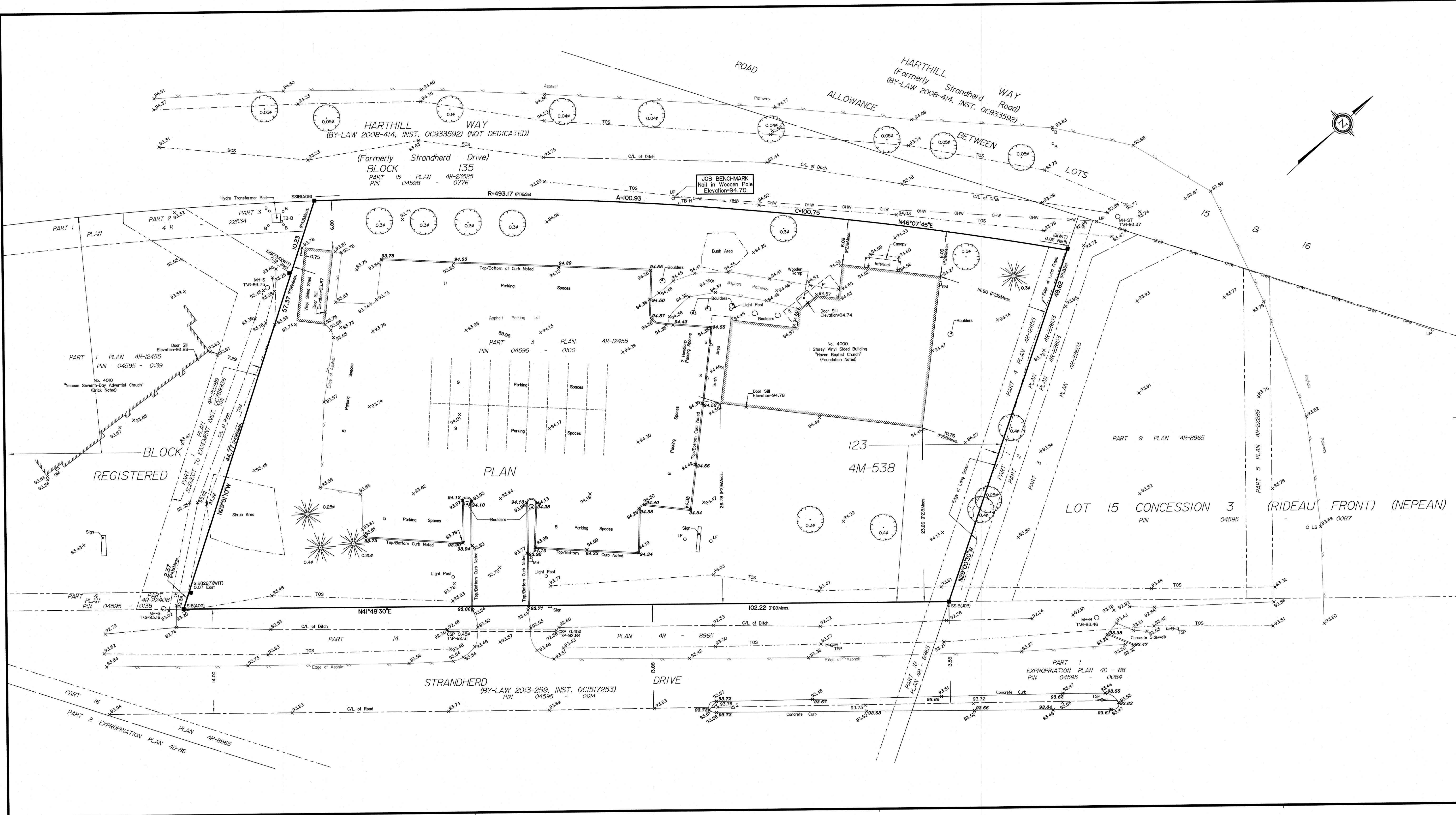
**PART 2**  
 THIS PLAN MUST BE READ IN CONJUNCTION WITH SURVEY REPORT DATED: December 10, 2018

ANNIS, O'SULLIVAN, VOLLEBEK LTD. grants to \_\_\_\_\_ (The Client), their solicitors, mortgagees, and other related parties, permission to use original, signed, sealed copies of the Surveyor's Real Property Report in transactions involving The Client.

- Notes & Legend**
- Denotes Survey Monument Planted
  - Survey Monument Found
  - SIB Standard Iron Bar
  - IB Iron Bar
  - (WT) Witness
  - (AOG) Annis, O'Sullivan, Vollebek Ltd.
  - Meas. Measured
  - (P1) Plan 4R-12455
  - (P2) (AOG) Plan April 10, 1997
  - (P3) Plan 4R-22534
  - (P4) Plan 4R-22408
  - MH-ST Maintenance Hole (Storm Sewer)
  - MH-S Maintenance Hole (Sanitary)
  - MH-B Maintenance Hole (Bell)
  - OHW Overhead Wires
  - UP Utility Pole
  - T/G Top of Grate
  - GM Gas Meter
  - TB-B Bell Terminal Box
  - TH-H Hydro Terminal Box
  - TSP Traffic Signal Post
  - Deciduous Tree
  - ★ Coniferous Tree
  - △ B Bollard
  - △ S Sign
  - MB Mail Box
  - ∅ Diameter
  - + 65.00 Location of Elevations
  - + 65.00 Location of Top of Curb Elevation
  - C/L Centreline
  - P Pillar
  - T/P Top of Pipe
  - CSP Corrugated Steel Pipe
  - TOS Top of Slope

ASSOCIATION OF ONTARIO  
 LAND SURVEYORS  
 PLAN SUBMISSION FORM  
 2078223

THIS PLAN IS NOT VALID UNLESS IT IS AN EMBOSSED ORIGINAL COPY ISSUED BY THE SURVEYOR In accordance with Regulation 1026, Section 29 (3).



Bearings are grid, derived from The Northerly Limit of Part 14 on Plan 4R-8965, shown to be N41°48'30"E and are referred to the Central Meridian of MTM Zone 9 (76°30' West Longitude) NAD-83 (original).

**ELEVATION NOTES**  
 1. Elevations shown are geodetic and are referred to the CGVD28 geodetic datum.  
 2. It is the responsibility of the user of this information to verify that the job benchmark has not been altered or disturbed and that its relative elevation and description agrees with the information shown on this drawing.

**UTILITY NOTES**  
 1. This drawing cannot be accepted as acknowledging all of the utilities and it will be the responsibility of the user to contact the respective utility authorities for confirmation.  
 2. Only visible surface utilities were located.  
 3. A field location of underground plant by the pertinent utility authority is mandatory before any work involving breaking ground, probing, excavating etc.

© Annis, O'Sullivan, Vollebek Ltd. 2018. "THIS PLAN IS PROTECTED BY COPYRIGHT"  
**ANNIS, O'SULLIVAN, VOLLEBEK LTD.**  
 14 Concourse Gate, Suite 500  
 Nepean, Ont. K2E 7S6  
 Phone: (613) 727-0850 / Fax: (613) 727-1079  
 Email: Nepean@aosvl.com