

**ANDREW MCCREIGHT**  
 MANAGER, DEVELOPMENT REVIEW CENTRAL  
 PLANNING, DEVELOPMENT & BUILDING SERVICES  
 DEVELOPMENT DEPARTMENT, CITY OF OTTAWA

**APPROVED**

By Andrew McCreight at 2:52 pm, Sep 11, 2024

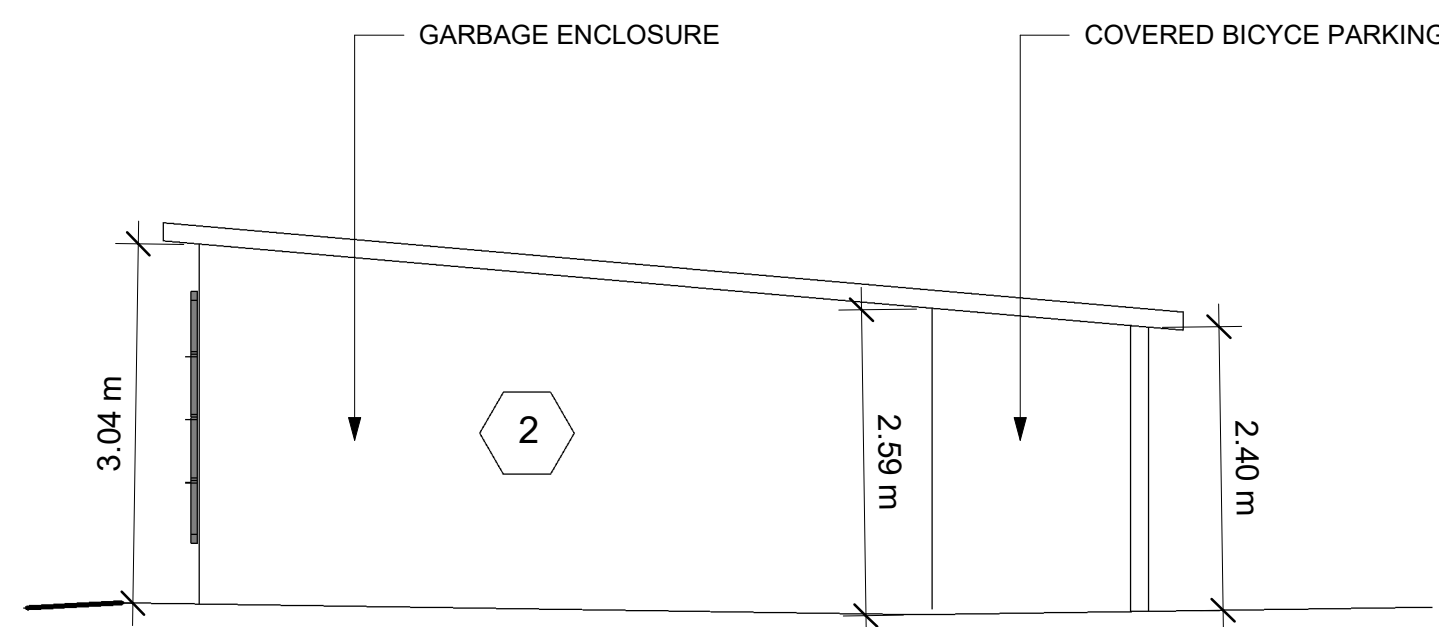
**MATERIAL LEGEND & NOTES**

- 1 BRICK VENEER
- 2 CEMENT BOARD

EXISTING BUILDING TO REMAIN



**1** Rear ( South) Elevation  
 3/16" = 1'-0"



**2** South Elevation-Garbage and Bicycle Enclosure  
 3/16" = 1'-0"

**RA** REDLINE ARCHITECTURE  
 REDLINE ARCHITECTURE INC.  
 Tel: 613-612-2232  
 info@redlinearchitecture.ca  
 www.redlinearchitecture.ca

**RESPONSIBILITIES:**  
 DO NOT SCALE DRAWINGS  
 ALL DESIGN AND CONSTRUCTION TO BE IN ACCORDANCE WITH THE ONTARIO BUILDING CODE 1917  
 ALL CONTRACTORS MUST WORK IN ACCORDANCE WITH ALL LAWS, REGULATIONS AND BYLAWS HAVING JURISDICTION  
 IT IS THE RESPONSIBILITY OF THE APPROPRIATE CONTRACTOR TO CHECK AND VERIFY ALL DIMENSIONS ON SITE AND REPORT ALL ERRORS AND OMISSIONS TO THE ARCHITECT/DESIGNER  
 THIS DRAWING MAY NOT BE USED FOR CONSTRUCTION UNLESS SIGNED BY THE ARCHITECT  
 COPYRIGHT RESERVED

GENERAL NOTES:  
 ONTARIO ASSOCIATION OF ARCHITECTS  
 LEVENT TATAR  
 LICENCE 9842

**280 LAURIER AVE. E.**  
 NEW 4 STOREY ADDITION TO EXISTING 6 STOREY BUILDING

**OWNER:**  
 280 LAURIER AVE EAST HOLDINGS INC.  
 226 ARGYLE AVE.  
 OTTAWA, ON K2P 1B9

**DEVELOPER:**  
 SMART LIVING PROPERTIES  
 226 ARGYLE AVE.  
 OTTAWA, ON K2P 1B9

**ARCHITECT:**  
 REDLINE ARCHITECTURE INC.  
 J.L. RICHARDS & ASSOCIATES LIMITED  
 TOWER II, 343 PRESTON ST.  
 SUITE 1000  
 OTTAWA, ON K1S 1M4

**LANDSCAPING:**  
 JAMES B. LENNOX & ASSOCIATES INC.  
 3352 CARLING AVE.  
 OTTAWA, ON K2H 5A9

**SURVEYOR:**  
 ACQU LTD.  
 14 CONCOURSE GATE, SUITE 500  
 OTTAWA, ON K2E 7S8

**STRUCTURAL ENGINEER:**  
 CHS STRUCTURAL LTD.  
 333 PRESTON ST SUITE 110,  
 OTTAWA, ON K1S 9K4

**MECHANICAL & ELECTRICAL ENGINEER:**  
 JAY CONSULTANTS  
 7465 EAST DANBRO CRESCENT  
 MISSISSAUGA, ON L5N 6P6

NO.	REVISION/ISSUE	DATE
9		
8		
7		
6		
5		
4		
3	ISSUED FOR REVISION	09/03/24
2	ISSUED FOR REVISION	02/23/24
1	ISSUED FOR SPA	08/11/23

PROJECT:  
**280 LAURIER AVE. E.**  
 NEW ADDITION TO EXISTING 6 STOREY BUILDING  
 280 LAURIER AVE. E.  
 OTTAWA, ON K1N 6P7

SOUTH ELEVATION

DRAWN BY: SHEET:  
 DATE: MARCH 21, 2021  
 SCALE: AS NOTED

**A9**