

TOPOGRAPHIC PLAN OF SURVEY OF
**LOTS 56, 57 and
 PART OF LOT 55**
North Lisgar Street
REGISTERED PLAN 2996
CITY OF OTTAWA
 Surveyed by Annis, O'Sullivan, Vollebek Ltd.

Scale 1 : 150
 0 1.5 3 4.5 6 Metres

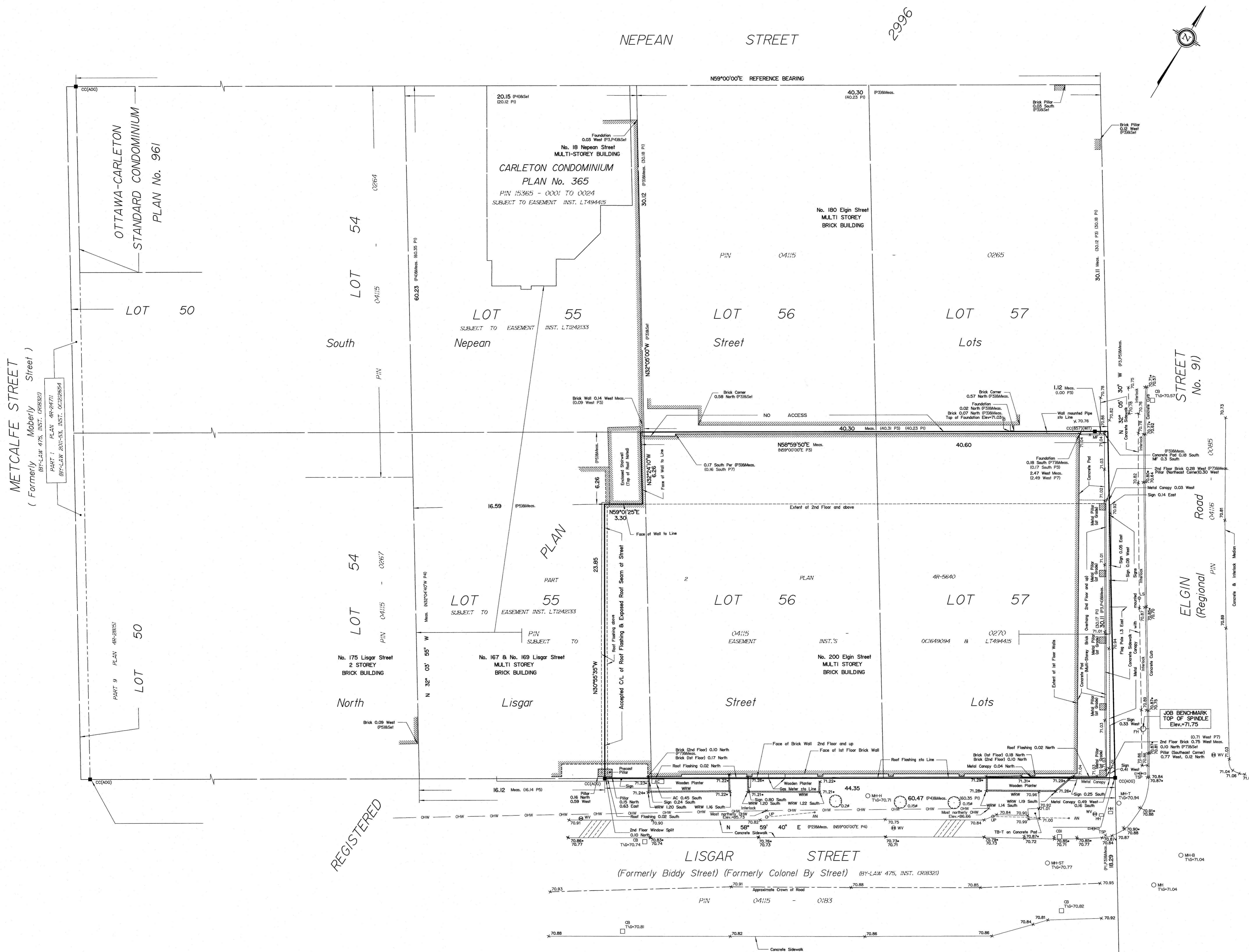
Metric
 DISTANCES SHOWN ON THIS PLAN ARE IN METRES AND
 CAN BE CONVERTED TO FEET BY DIVIDING BY 0.3048

Surveyor's Certificate
 I CERTIFY THAT:
 1. This survey and plan are correct and in accordance with the Survey Act and the Surveyors Act and the regulations made under them.
 2. The survey was completed on the 30th day of November, 2023.
 Date Dec 6, 2023
 Jamie Leslie
 Ontario Land Surveyor

Notes & Legend

- | | | |
|---------|----------------------------------|-------------------------|
| —□— | Denotes | Survey Monument Planted |
| —■— | Survey Monument Found | |
| SIB | Standard Iron Bar | |
| SSIB | Short Standard Iron Bar | |
| IB | Iron Bar | |
| CC | Cut Cross | |
| (WIT) | Witness | |
| Meas. | Measured | |
| (AOG) | Annis, O'Sullivan, Vollebek Ltd. | |
| (P) | Registered Plan 2996 | |
| (P2) | Plan 4R-30340 | |
| (P3) | (857) Plan May 22, 2008 | |
| (P4) | Plan 4R-5640 | |
| (P5) | (725) Plan October 30, 1984 | |
| (P7) | (725) Plan June 23, 1965 | |
| BF | Board Fence | |
| MF | Metal Fence | |
| AC | Air Conditioner | |
| C/L | Centreline | |
| ○ MH-ST | Maintenance Hole (Storm Sewer) | |
| ○ MH-S | Maintenance Hole (Sanitary) | |
| ○ MH-B | Maintenance Hole (Bell) | |
| ○ MH-T | Maintenance Hole (Traffic) | |
| ○ MH-H | Maintenance Hole (Hydro) | |
| ○ MH | Maintenance Hole (Unidentified) | |
| — OHW — | Overhead Wires | |
| ○ UP | Utility Pole | |
| — AN — | Anchor | |
| ○ LS | Light Standard | |
| □ CB | Catch Basin | |
| □ CBI | Catch Basin Inlet | |
| ○ FH | Fire Hydrant | |
| ○ WV | Water Valve | |
| T/G | Top of Gate | |
| ○ TB-T | Traffic Terminal Box | |
| — TP — | Traffic Signal Post | |
| WRW | Wooden Retaining Wall | |
| ○ | Diameter | |
| ○ 65.00 | Location of Elevations | |
| ○ 65.00 | Top of Concrete Curb Elevation | |
| ○ MH | Handhole | |
| ○ | Deciduous Tree | |

Bearings are grid, derived from the southerly limit of Nepean Street shown to be NS9°00'00"E on Ottawa-Carleton Standard Condominium Plan No. 981 and are referred to MTM Zone 9 (76°30' West Longitude) NAD-83 (original).



REGISTERED

LOT 57
 South Lisgar Street Lots
 REGISTERED PLAN 12281

- ELEVATION NOTES**
- Elevations shown are geodetic and are referred to the CGVD28 geodetic datum.
 - It is the responsibility of the user of this information to verify that the job benchmark has not been altered or disturbed and that its relative elevation and description agrees with the information shown on this drawing.
- UTILITY NOTES**
- This drawing cannot be accepted as acknowledging all of the utilities and it will be the responsibility of the user to contact the respective utility authorities for confirmation.
 - Only visible surface utilities were located.
 - A field location of underground plant by the pertinent utility authority is mandatory before any work involving breaking ground, probing, excavating etc.