

ELEVATION KEYNOTE LEGEND	
NOTE	DESCRIPTION
1	ARCHITECTURAL MASONRY BLOCK APPROXIMATE "WALKOUT OR MIDDLEIGHT GREY"
2	ARCHITECTURAL MASONRY BLOCK APPROXIMATE "COYAL"
3	STEEL SIDING METAL SIDING/DOOD "BLACK WALKOUT"
4	ACRYLIC LIGHT GREY COLOR
5	ACRYLIC CHARCOAL COLOR
6	EXPOSED CONCRETE
7	METAL CLADDING PANEL LIGHT GREY COLOR
8	WINDOW WALL DOUBLE GLASS WITH ALUMINUM PROFILE - BLACK COLOR
9	QUADRANT WITH TEMPLERED GLASS WITH ALUMINUM PROFILE - BLACK COLOR
10	PRIVACY SCREEN WITH TEMPLERED GLASS WITH ALUMINUM PROFILE - BLACK COLOR, 800MM OF HEIGHT
11	LOWERS COLOR MATCHED TO ADJACENT MATERIAL
12	METAL FLASHING COLOR MATCHED TO ADJACENT MATERIAL
13	BARNAJER SPOUT
14	METAL PANEL FOR ENTRANCE CANOPY - BLACK COLOR
15	SALVANIZED STEEL GUTTER
16	GALVANIZED STEEL GUARDRAIL WITH PICKETS
17	PROF. PAINTED METAL SCUPPER
18	VENT COVERS SEE MECHANICAL DRAWINGS
19	PRIVACY PICKETS WITH TEMPLERED ALUMINUM - BLACK COLOR

NOTES GÉNÉRALES - General Notes

1. Ces documents d'architecture sont la propriété exclusive de NEUF architecte(s) et ne peuvent être utilisés, réproduits ou copiés sans autorisation écrite préalable. / These architectural documents are the exclusive property of NEUF architecte(s) and cannot be used, copied or reproduced without written pre-authorization.

2. Les dimensions apparaissant aux documents doivent être vérifiées par l'entrepreneur avant le début des travaux. / All dimensions which appear on the documents must be verified by the contractor before to start the work.

3. Veuillez aviser l'architecte de toute dimension en sur ou en dessous des documents de ceux des autres professionnels. / The architect must be notified of all errors, omissions and discrepancies between these documents and those of the other professionals.

4. Les dimensions sur ces documents doivent être lues et non mesurées. / The dimensions on these documents must be read and not measured.

PLANNIFICATEUR - Planner
FOTENI Planning and Urban Design
 390 Cooper Street, Suite 300, Ottawa, ON K2P 2H7
 T 613 730 5709 foteni.com

ARCHITECTURE DE PAYSAGE - Landscape Architect
GJA Inc. Gino, J. Aiello
 110 Dabury Road, Unit 9, Ottawa, ON K2T 0C2
 T 613 298 5700 gja.com

INGÉNIEUR TRANSPORT - Transportation Engineering
PARSONS
 1225 Somerset Street, Suite 100, Ottawa, ON K1J 1T2
 T 613 836 4160 parsons.com

CIVIL - Civil
McINTOSH PERRY
 115 Wellington Road RR 3, Carp, Ottawa, ON K0A 1L0
 T 613 836 2184 mcintoshperry.com

STRUCTURE - Structure
RJC Engineers
 1545 Carling Avenue, Suite 304, Ottawa, ON K1Z 8P9
 T 613 714 7200 rjc.ca

ARCHITECTES - Architect
NEUF architecte(s)
 630 boul. René-Lévesque O. 32e étage, Montréal, QC H3B 1S6
 T 514 947 1117 neuf.ca

INGÉNIEUR MÉCANIQUE - Mechanical Engineer
BUILDING CONSULTANTS
 6455 rue Dorval-Leslie, Suite 110, Boisbriand, QC J7H 0E8
 T 514 718 6841 building-consultants.ca

INGÉNIEUR ÉLECTRIQUE - Electrical Engineer
BUILDING CONSULTANTS
 6455 rue Dorval-Leslie, Suite 110, Boisbriand, QC J7H 0E8
 T 514 718 6841 building-consultants.ca

SCEAU / Seal



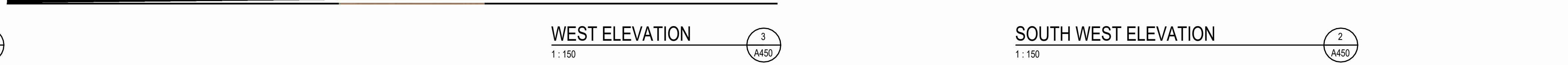
NORTH ELEVATION
 1:150



EAST ELEVATION
 1:150



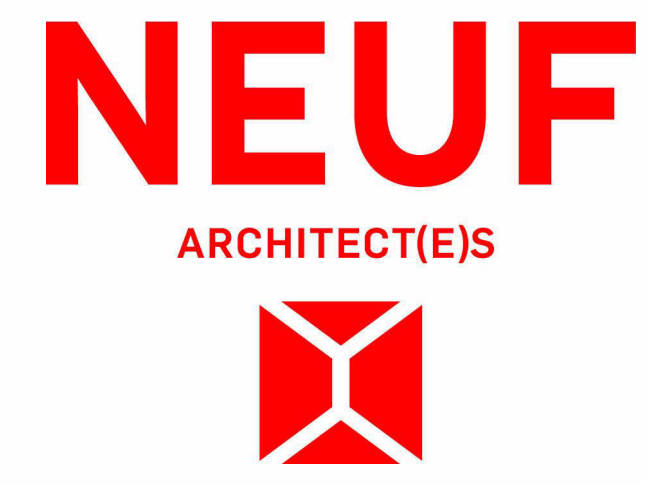
WEST ELEVATION
 1:150



SOUTH WEST ELEVATION
 1:150



SOUTH ELEVATION
 1:150



CLIENT - Client
SINA
 3000 boul. La Capitale, Suite 1200, Laval, QC H7T 2P5
 T 514 965 7462 sina.ca

OUVRAGE - Project
788 MARCH ROAD RESIDENTIAL

EMPLACEMENT - Location
OTTAWA, ON

NO. REVISION **DATE (aa-mm-jj)**

1	ISSUED FOR COORDINATION	2018-07-19
2	ISSUED FOR SITE PLAN CONTROL	2018-08-15
4	FOR SITE PLAN CONTROL	2018-12-19
5	ISSUE FOR PERMITS VARIANCE	2019-12-28

DESSINÉ PAR - Drawn by **VÉRIFIÉ PAR - Checked by**
M.S. / E.C. **A.C.**

DATE (aa-mm-jj) **ÉCHELLE - Scale**
2024-06-04 **1 : 150**

TITRE DU DESSIN - Drawing Title
COLORED ELEVATIONS

REVISION - Revision **NO. DESSIN - Draw Number**
5 **A450**

NOTES GÉNÉRALES / General Notes

- Ces documents d'architecture sont la propriété exclusive de NEUF architectes et ne peuvent être utilisés, reproduits ou copiés sans autorisation écrite préalable. / These architectural documents are the exclusive property of NEUF architectes and cannot be used, copied or reproduced without written pre-authorization.
- Les dimensions apparaissant aux documents doivent être vérifiées par l'entrepreneur avant le début des travaux. / All dimensions which appear on the documents must be verified by the contractor before to start the work.
- Veuillez aviser l'architecte de toute dimension enrou divergences entre ces documents et ceux des autres professionnels. / The architect must be notified of all errors, omissions and discrepancies between these documents and those of the others professionals.
- Les dimensions sur ces documents doivent être lues et non mesurées. / The dimensions on these documents must be read and not measured.

PLANIFICATEUR / Planner
FOTENN Planning and Urban Design
 390 Cooper Street, Suite 300, Ottawa, ON K2P 2H7
 T 613 730 5709 fotenn.com

ARCHITECTURE DE PAYSAGE / Landscape Architect
GJA Inc. Gino, J. Aiello
 110 Dababy Road, Unit 9, Ottawa, ON K2T 0C2
 T 613 289 8100 gja.com

INGÉNIEURIE TRANSPORT / Transportation Engineering
PARSONS
 1223 Somerset Street, Suite 100, Ottawa, ON K1J 1T2
 T 613 738 4160 parsons.com

CIVIL / Civil
McINTOSH PERRY
 115 Wellington Road RR 3 Corp., Ottawa, ON K0A 1L0
 T 613 836 2184 mcintoshperry.com

STRUCTURE / Structure
RJC Engineers
 1545 Carling Avenue, Suite 304, Ottawa, ON K1Z 8P9
 T 613 714 7000 rjc.ca

ARCHITECTES / Architect
NEUF architect(e)s
 630 boul. René-Lévesque O. 32e étage, Montréal, QC H3B 1S6
 T 514 847 1117 neuf.ca

INGÉNIEUR MÉCANIQUE / Mechanical Engineer
BUILDing Consultants
 6455 rue Dorval-Lesieur, Suite 110, Boisbriand, QC J7H 0E8
 T 514 718 6841 building-consultants.ca

INGÉNIEUR ÉLECTRIQUE / Electrical Engineer
BUILDing Consultants
 6455 rue Dorval-Lesieur, Suite 110, Boisbriand, QC J7H 0E8
 T 514 718 6841 building-consultants.ca

SCÉAU / Seal



ENTRANCE BUILDING "A" ELEVATION 4
 1:150 A451



ENTRANCE BUILDING "B" ELEVATION 3
 1:150 A451



COURTYARD BUILDING "B" ELEVATION 4
 1:150 A451

OVERALL COURTYARD ELEVATION 5
 1:150 A451

COURTYARD BUILDING "A" CORNER ELEVATION 1
 1:150 A451

COURTYARD BUILDING "A" ELEVATION 2
 1:150 A451

CLIENT / Client
SINA
 3000 boul. La Capitale, Suite 1200, Laval, QC H7T 2P5
 T 514 962 7402 sina.ca

OUVRAGE / Project
788 MARCH ROAD RESIDENTIAL

EMPLACEMENT / Location NO. PROJET No. / 13109
OTTAWA, ON

NO. REVISION / DATE (aa-mm-jj)

DESSINÉ PAR / Drawn by VÉRIFIÉ PAR / Checked by
Author **Checker**

DATE (aa-mm-jj) **ÉCHELLE / Scale**
 2024-06-04 1:150

TITRE DU DESSIN / Drawing Title
COLORED ELEVATIONS OF COURTYARD

REVISION / Revision NO. DESSIN / Day Number
A451

NOTES GÉNÉRALES / General Notes

- Ces documents d'architecture sont la propriété exclusive de NEUF architect(e)s et ne peuvent être utilisés, reproduits ou copiés sans autorisation écrite préalable. / These architectural documents are the exclusive property of NEUF architect(e)s and cannot be used, copied or reproduced without written pre-authorization.
- Les dimensions apparaissant aux documents doivent être vérifiées par l'entrepreneur avant le début des travaux. / All dimensions which appear on the documents must be verified by the contractor before to start the work.
- Veuillez noter l'existence de toute dimension enroulées divergences entre ces documents et ceux des autres professionnels. / The architect must be notified of all errors, omissions and discrepancies between these documents and those of the others professionals.
- Les dimensions sur ces documents doivent être lues et non mesurées. / The dimensions on these documents must be read and not measured.

PLANIFICATEUR / Planner
FOTENN Planning and Urban Design
 390 Cooper Street, Suite 300, Ottawa, ON K2P 2H7
 T 613 730 5709 fotenn.com

ARCHITECTURE DE PAYSAGE / Landscape Architect
GJA Inc. Gino, J. Aiello
 110 Dababy Road, Unit 9, Ottawa, ON K2T 0C2
 T 613 289 6100 gja.com

INGÉNIEUR TRANSPORT / Transportation Engineering
PARSONS
 1223 Somerset Street, Suite 100, Ottawa, ON K1J 1T2
 T 613 738 4160 parsons.com

CIVIL / Civil
McINTOSH PERRY
 115 Wellington Road RR 3 Corp., Ottawa, ON K0A 1L0
 T 613 836 2184 mcintoshperry.com

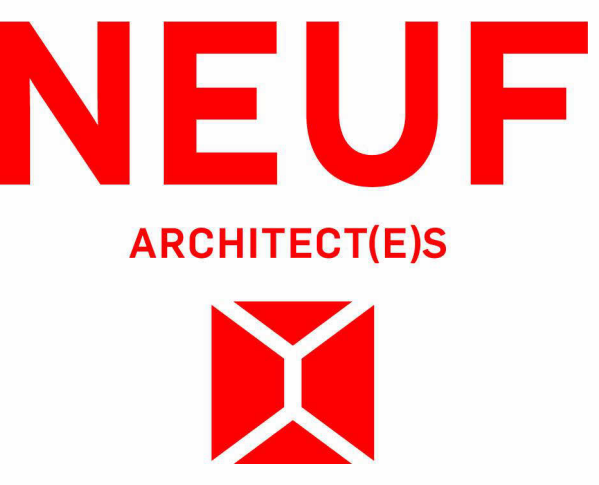
STRUCTURE / Structure
RJC Engineers
 1545 Carling Avenue, Suite 304, Ottawa, ON K1Z 8P9
 T 613 714 7000 rjc.ca

ARCHITECTES / Architect
NEUF architect(e)s
 630 boul. René-Lévesque O. 32e étage, Montréal, QC H3B 1S6
 T 514 947 1117 neuf.ca

INGÉNIEUR MÉCANIQUE / Mechanical Engineer
BUILDING Consultants
 6455 rue Dorval-Lussier, Suite 110, Boisbriand, QC J7H 0E8
 T 514 718 6841 building-consultants.ca

INGÉNIEUR ÉLECTRIQUE / Electrical Engineer
BUILDING Consultants
 6455 rue Dorval-Lussier, Suite 110, Boisbriand, QC J7H 0E8
 T 514 718 6841 building-consultants.ca

SCÉAU / Seal



3000 boul. La Centrale, Suite 1200, Laval, QC H7T 2P5
 T 514 965 7462 sina.ca

OUVRAGE / Project
788 MARCH ROAD RESIDENTIAL

EMPLACEMENT / Location
OTTAWA, ON

NO. PROJET / No.
13109

NO. REVISION / DATE (aa-mm-jj)

Preliminary DO NOT USE FOR CONSTRUCTION

DESSINÉ PAR / Drawn by
E.S. / E.C.

VÉRIFIÉ PAR / Checked by
A.C.

DATE (aa-mm-jj) / ECHELLE / Scale
2024-06-04 / 1 : 250

TITRE DU DESSIN / Drawing Title
ELEVATIONS WITH NEIGHBOURS

REVISION / Revision
NO. DESSIN / Day Number
A452



BUILDING CROSS SECTIONS WITH NEIGHBOURS NORTH
 1:250



BUILDING CROSS SECTIONS WITH NEIGHBOURS SOUTH
 1:250