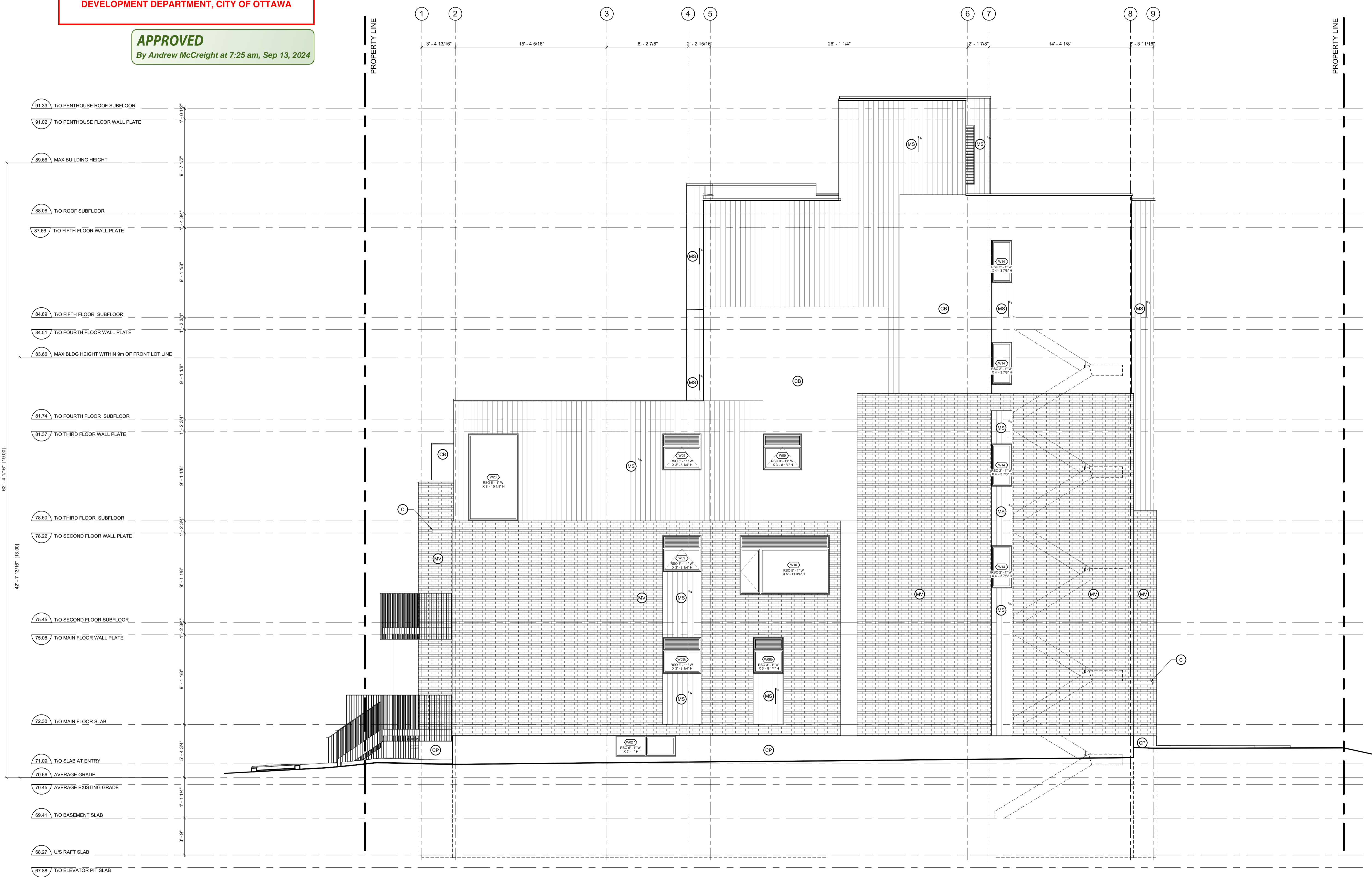


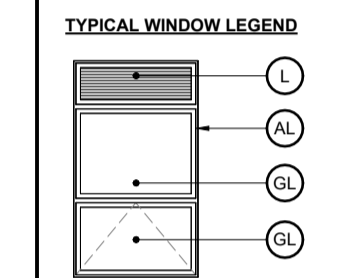
ANDREW MCCREIGHT
 MANAGER, DEVELOPMENT REVIEW CENTRAL
 PLANNING, DEVELOPMENT & BUILDING SERVICES
 DEVELOPMENT DEPARTMENT, CITY OF OTTAWA

APPROVED
 By Andrew McCreight at 7:25 am, Sep 13, 2024

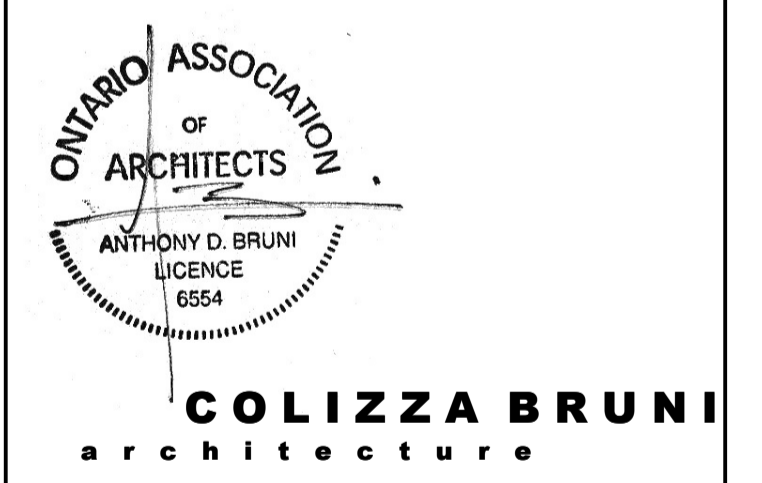


- 91.33 T/O PENTHOUSE ROOF SUBFLOOR
- 91.02 T/O PENTHOUSE FLOOR WALL PLATE
- 89.66 MAX BUILDING HEIGHT
- 88.00 T/O ROOF SUBFLOOR
- 87.66 T/O FIFTH FLOOR WALL PLATE
- 84.89 T/O FIFTH FLOOR SUBFLOOR
- 84.51 T/O FOURTH FLOOR WALL PLATE
- 83.66 MAX BLDG HEIGHT WITHIN 9m OF FRONT LOT LINE
- 81.74 T/O FOURTH FLOOR SUBFLOOR
- 81.37 T/O THIRD FLOOR WALL PLATE
- 78.60 T/O THIRD FLOOR SUBFLOOR
- 78.22 T/O SECOND FLOOR WALL PLATE
- 75.45 T/O SECOND FLOOR SUBFLOOR
- 75.08 T/O MAIN FLOOR WALL PLATE
- 72.30 T/O MAIN FLOOR SLAB
- 71.09 T/O SLAB AT ENTRY
- 70.88 AVERAGE GRADE
- 70.45 AVERAGE EXISTING GRADE
- 69.41 T/O BASEMENT SLAB
- 68.27 US RAFT SLAB
- 67.88 T/O ELEVATOR PIT SLAB

- GENERAL NOTES:**
- ADD 1" TO OVERALL DIMENSIONS FOR WINDOW & DOOR ROUGH STUD OPENINGS (R/O) UNLESS NOTED OTHERWISE
 - WINDOW & DOOR [COLOUR: 'BLACK' EXTERIOR, 'WHITE' INTERIOR]
 - SOFFITS TO BE PRE-FINISHED METAL VENTED. COLOUR: BLACK
 - INSTALL LIGHT AT EXTERIOR DOORS
 - ALL PRE-FINISHED METALS 4" OR LESS TO BE MIN. 26 GA. 4"-8" TO BE MIN. 24 GA. 8" OR GREATER TO BE MIN. 22 GA.
 - AN ASTERISK (*) WITHIN WINDOW TAG DENOTES REQUIREMENT OF SPRINKLER-PROTECTED WINDOW SYSTEM IN ACCORDANCE WITH CANULC-S136.2021 AS PER CBC 3.1.6.15.
 - BIRD SAFE DESIGN MEASURES INCLUDE:
 - a. NO GLASS RAILINGS TO BE USED THROUGHOUT PROJECT
 - b. ALL VENTILATION LOUVRES, GRATES AND PIPES TO HAVE SCREENS SPECIFIED TO PREVENT ENTRY FROM BIRDS
 - c. REDUCTION OF TRANSPARENT REFLECTING MATERIALS
 - d. AVOIDING EXPANSES OF GLAZING
 - e. VARIOUS MATERIALITY
 - f. EXTERIOR LIGHTING DESIGN.
- MATERIALS LEGEND**
- MV - MASONRY VENEER [COLOUR: RED]
 - MS - METAL SIDING, VIOWEST ADS300R SERIES, 22 GA [COLOUR: EBONY 9822, INSTALLED VERTICALLY]
 - CB - CEMENT BOARD BY KOL, EXPOSED FASTENER SYSTEM [COLOUR: TELEGREY 7038 SMOOTH]
 - CP - CEMENT PAVING
 - SR - SLOPED STEEL ROOFING [COLOUR: BLACK OR CHARCOAL GREY]
 - GL - INSULATED GLAZING UNITS
 - L - INTEGRATED PRE-FINISHED MECHANICAL LOUVRE [COLOUR: BLACK]
 - AL - PRE-FINISHED ANNOXIDIZED ALUMINUM WINDOW FRAME [COLOUR: BLACK]
 - C - CANOPY



NO.	REV DATE	REV DESCRIPTION
01	24-01-23	ISSUED FOR SPC SUBMISSION
02	24-03-21	RE-ISSUED FOR SPC SUBMISSION
03	24-04-12	RE-ISSUED FOR SPC SUBMISSION
04	24-05-03	ISSUED FOR PERMIT SUBMISSION
05	24-05-10	RE-ISSUED FOR SPC SUBMISSION
06	24-07-31	ISSUED FOR PERMIT RESPONSE 1
07	24-08-01	ISSUED FOR PRELIMINARY TENDER
08	24-08-20	RE-ISSUED FOR SPC SUBMISSION
09	24-08-29	ISSUED FOR PERMIT RESPONSE 2
10	24-09-04	RE-ISSUED FOR SPC SUBMISSION



76 CHAMBERLAIN AVE • OTTAWA • ONTARIO • K1S 1V5
 T 613.236.2944 • F 613.236.6777 • www.colizzabruni.com

PROJECT NAME
283 & 285 McLEOD STREET

OTTAWA, ON

DRAWING TITLE
EAST ELEVATION

SCALE
 AS NOTED

DRAWN BY
 BS

DATE
 24/09/04

PROJECT NO.
 01917

DRAWING NO.
A203