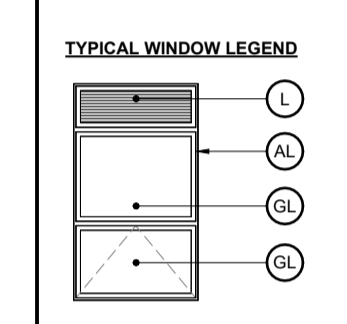


- GENERAL NOTES:**
- ADD 1" TO OVERALL DIMENSIONS FOR WINDOW & DOOR ROUGH STUD OPENINGS (RSO) UNLESS NOTED OTHERWISE
  - WINDOW & DOOR (COLOUR: BLACK EXTERIOR, WHITE INTERIOR)
  - SOFFITS TO BE PRE-FINISHED METAL VENTED. COLOUR: BLACK
  - INSTALL LIGHT AT EXTERIOR DOORS
  - ALL PRE-FINISHED METALS 4" OR LESS TO BE MIN. 26 GA. 4"-8" TO BE MIN. 24 GA. 8" OR GREATER TO BE MIN. 22 GA.
  - AN ASTERISK (\*) WITHIN WINDOW TAG DENOTES REQUIREMENT OF SPRINKLER-PROTECTED WINDOW SYSTEM IN ACCORDANCE WITH CANULC-S136.2021 AS PER CBC 3.1.8.15.
  - BIRD SAFE DESIGN MEASURES INCLUDE:
    - NO GLASS RAILINGS TO BE USED THROUGHOUT PROJECT
    - ALL VENTILATION LOUVRES, GRATES AND PIPES TO HAVE SCREENS SPECIFIED TO PREVENT ENTRY FROM BIRDS
    - REDUCTION OF TRANSPARENT/REFLECTING MATERIALS
    - AVOIDING EXPANSES OF GLAZING
    - VARIED MATERIALITY
    - EXTERIOR LIGHTING DESIGN.

NO.	REV DATE	REV DESCRIPTION
01	24-01-23	ISSUED FOR SPC SUBMISSION
02	24-03-21	RE-ISSUED FOR SPC SUBMISSION
03	24-04-12	RE-ISSUED FOR SPC SUBMISSION
04	24-05-03	ISSUED FOR PERMIT SUBMISSION
05	24-05-10	RE-ISSUED FOR SPC SUBMISSION
06	24-07-31	ISSUED FOR PERMIT RESPONSE 1
07	24-08-01	ISSUED FOR PRELIMINARY TENDER
08	24-08-20	RE-ISSUED FOR SPC SUBMISSION
09	24-08-29	ISSUED FOR PERMIT RESPONSE 2
10	24-09-04	RE-ISSUED FOR SPC SUBMISSION

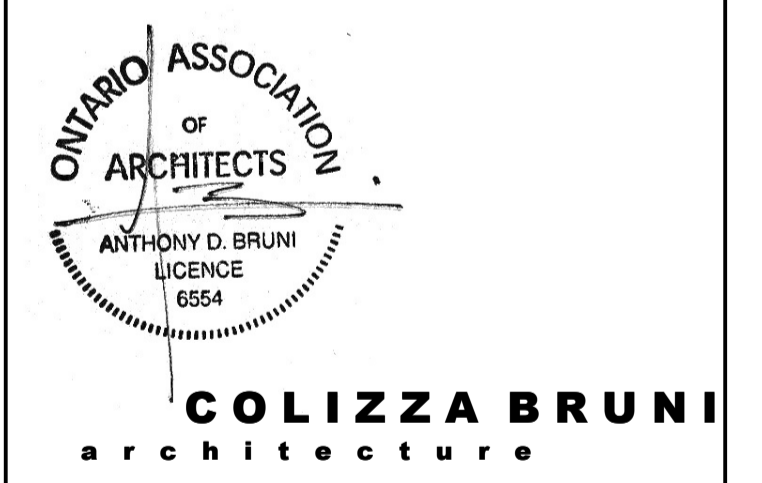
- MATERIALS LEGEND**
- MV - MASONRY VENEER (COLOUR: RED)
  - MS - METAL SIDING, W/ WEST ADOOR SERIES, 22 GA (COLOUR: EBONY 9822, INSTALLED VERTICALLY)
  - CB - CEMENT BOARD BY KOL, EXPOSED FASTENER SYSTEM (COLOUR: TELEGREY T038 SMOOTH)
  - CP - CEMENT PARKING
  - SR - SLOPED STEEL ROOFING (COLOUR: BLACK OR CHARCOAL GREY)
  - GL - INSULATED GLAZING UNITS
  - L - INTEGRATED PRE-FINISHED MECHANICAL LOUVRE (COLOUR: BLACK)
  - AL - PRE-FINISHED ANNOXIDIZED ALUMINUM WINDOW FRAME (COLOUR: BLACK)
  - C - CANOPY



*Andrew McCreight*

**ANDREW MCCREIGHT**  
MANAGER, DEVELOPMENT REVIEW CENTRAL  
PLANNING, DEVELOPMENT & BUILDING SERVICES  
DEVELOPMENT DEPARTMENT, CITY OF OTTAWA

**APPROVED**  
By Andrew McCreight at 7:25 am, Sep 13, 2024



76 CHAMBERLAIN AVE • OTTAWA • ONTARIO • K1S 1V5  
T 613.238.2944 • F 613.238.6777 • www.colizzabruni.com

PROJECT NAME  
**283 & 285 McLEOD STREET**

OTTAWA, ON

DRAWING TITLE  
**SOUTH ELEVATION**

SCALE  
AS NOTED

DRAWN BY  
BS

DATE  
24/09/04

PROJECT NO.  
01917

DRAWING NO.  
**A200**



**1 SOUTH ELEVATION**  
A200 3/16" = 1'-0"