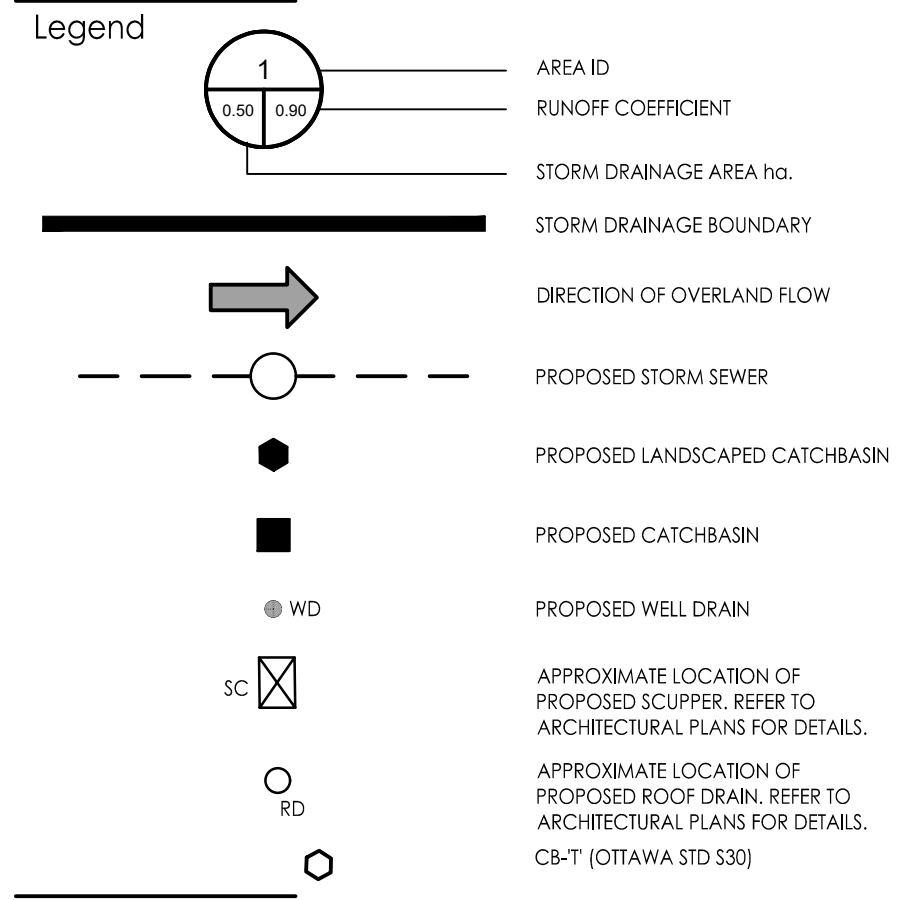


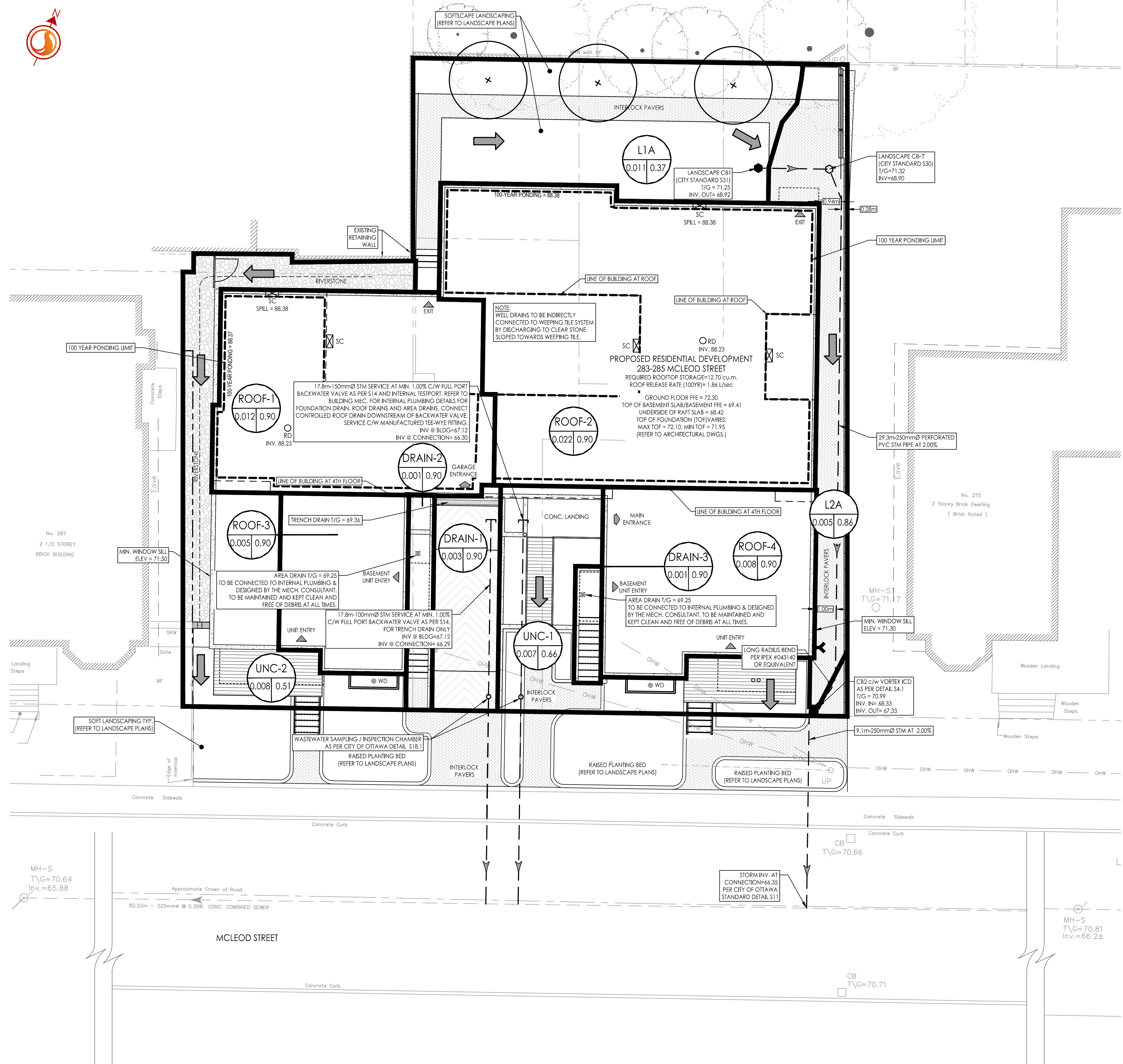


Stantec Consulting Ltd.
300 - 1331 Clyde Avenue
Ottawa ON
Tel. 613.722.4420
www.stantec.com

Copyright Reserved
The Contractor shall verify and be responsible for all dimensions. DO NOT scale the drawing - any errors or omissions shall be reported to Stantec without delay.
The Copyrights to all designs and drawings are the property of Stantec. Reproduction or use for any purpose other than that authorized by Stantec is forbidden.



Notes
1. ROOF TO BE EQUIPPED WITH RESTRICTED RELEASE ROOF DRAINS FOR ROOFTOP STORAGE. SCUPPERS TO ALLOW EMERGENCY OVERFLOW OVER 6" (150mm) STORAGE DEPTH.



Revision	By	Appd.	YY.MM.DD
4	JP	KS	24.06.18
3	JP	KS	24.05.17
2	AJT	KS	24.04.05
1	AJT	KS	24.01.22

File Name: 160401782-08.dwg
Dwn. Chkd. Dgn. 24.01.22

Permit-Seal



Client/Project
REZY PROPERTIES INC.

CENTRETOWN
283-285 MCLEOD STREET
OTTAWA, ON, CANADA

Title
STORM DRAINAGE PLAN

Project No. 160401782
Drawing No. SD-1
Scale 1:100
Sheet 6 of 7
Revision 3

BUILDING	DRAIN TYPE	# DRAINS	SETTINGS	2YR Head (mm)	100YR Head (mm)	2YR RELEASE RATE (L/s)	100YR RELEASE RATE (L/s)
ROOF-1	WATTS ACCUTROL	1	25% OPEN	87	141	0.83	1.04
ROOF-2	WATTS ACCUTROL	1	25% OPEN	95	145	0.85	1.07

X:\Projects\160401782\Design\Drawings\160401782-08.dwg
2024/06/19 10:22:19 AM by: CLARENCE WONG