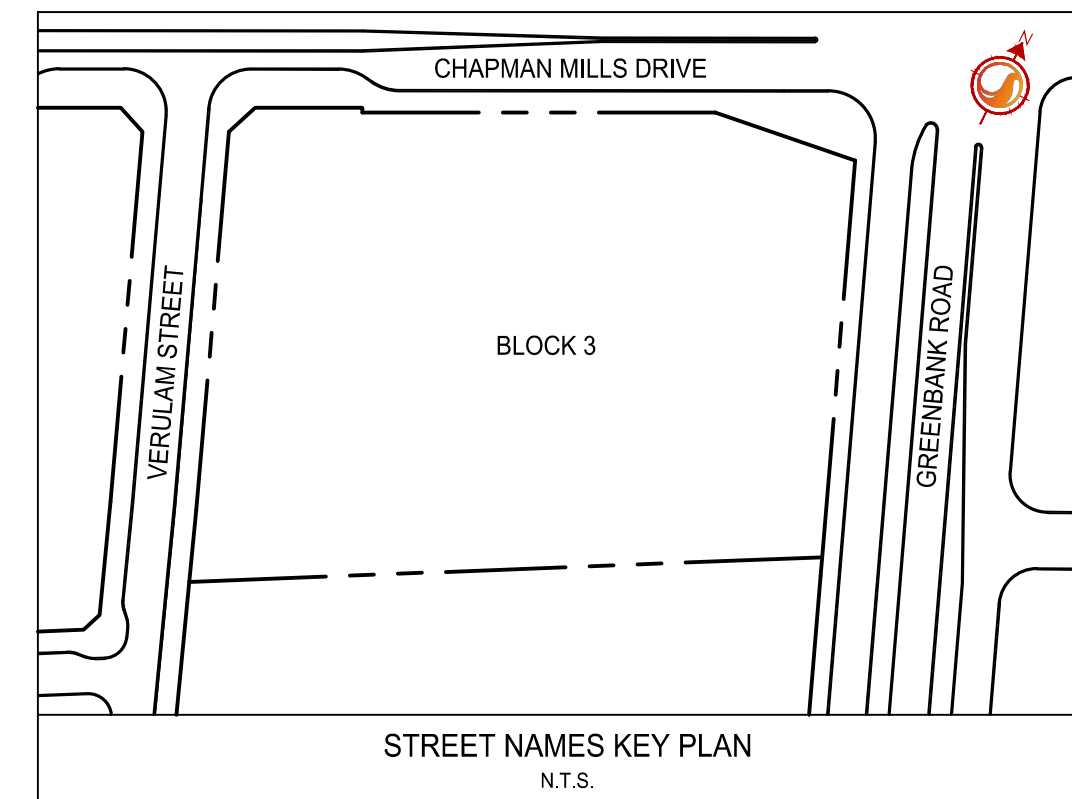
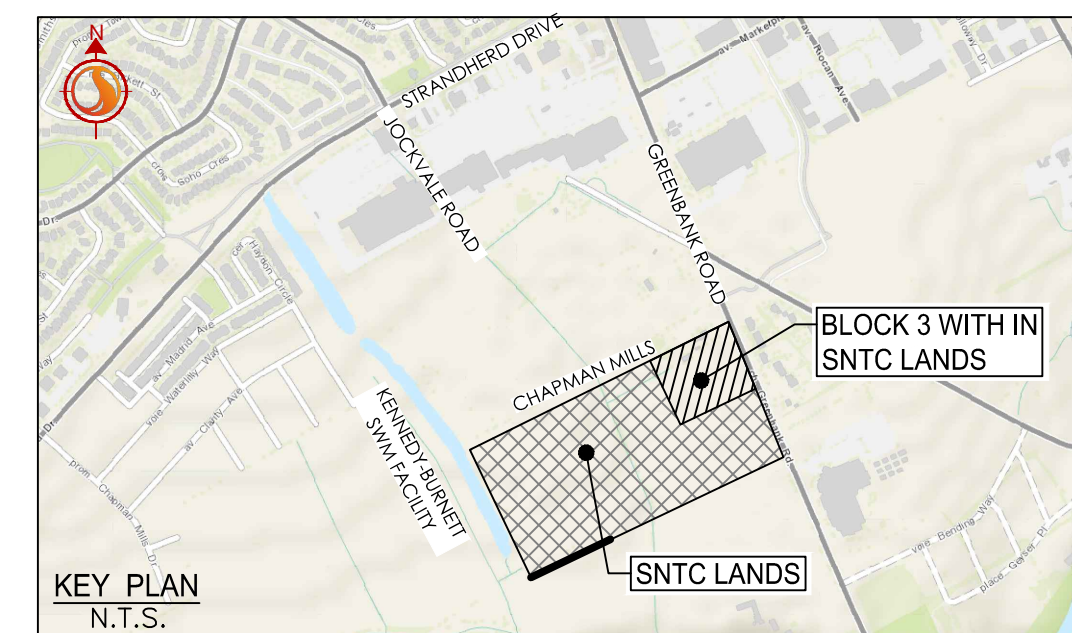
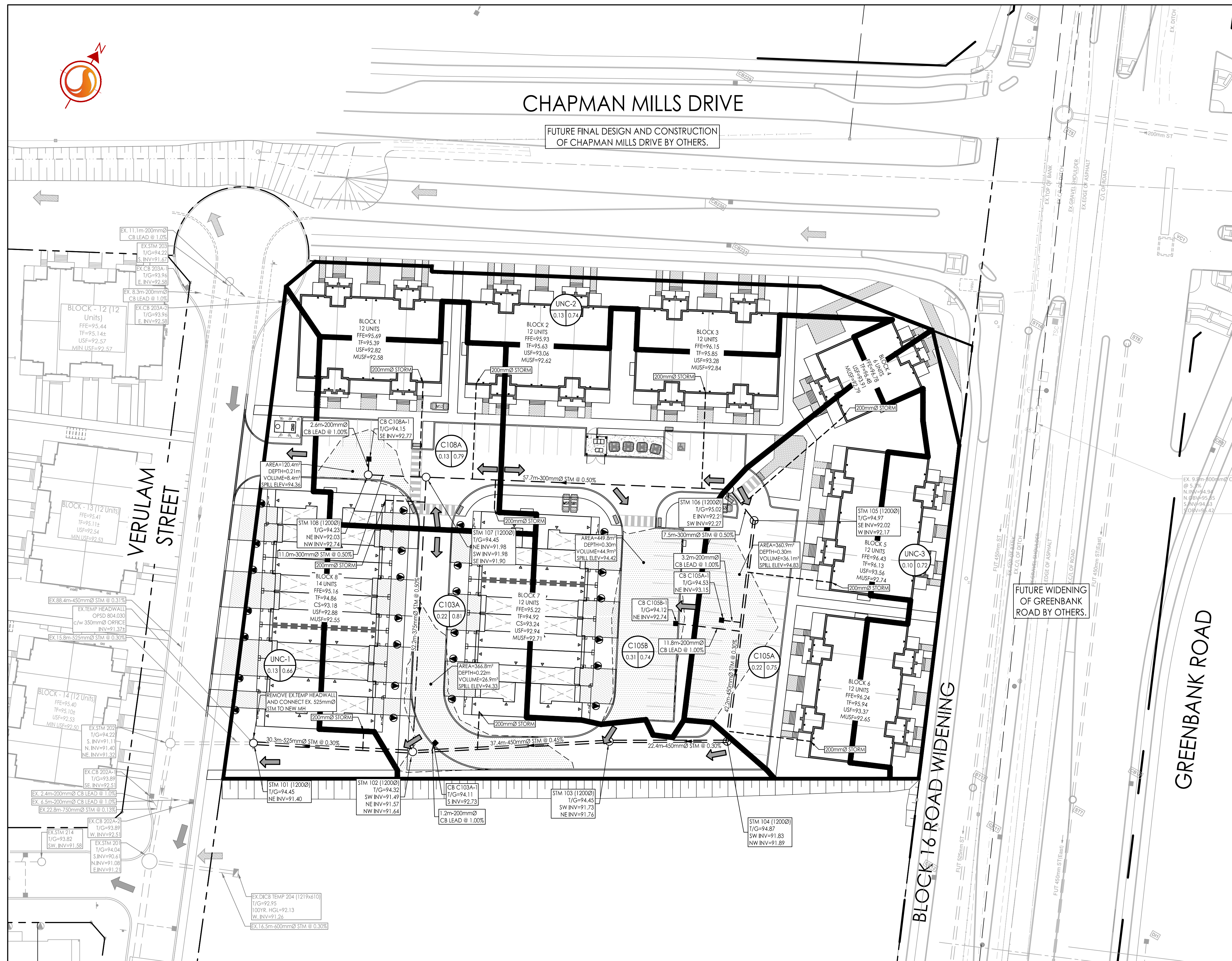




# CHAPMAN MILLS DRIVE

FUTURE FINAL DESIGN AND CONSTRUCTION OF CHAPMAN MILLS DRIVE BY OTHERS.



ICD TABLE					
STRUCTURE ID	TRIBUTARY AREA ID	ICD TYPE	2YR HEAD (m)	100YR HEAD (m)	100YR FLOW (L/s)
CB C103A-1	C103A	127mm ORFICE	1.41	1.58	37.30
CB C105A-1	C105A	121mm ORFICE	1.41	1.61	33.89
CB C105B-1	C105B	152mm ORFICE	1.31	1.62	51.10
CB C108A-1	C108A	121mm ORFICE	0.71	1.58	23.49



Stantec Consulting Ltd.  
400 - 1331 Clyde Avenue  
Ottawa ON  
Tel. 613.722.4420  
www.stantec.com

Copyright Reserved  
The Contractor shall verify and be responsible for all dimensions. DO NOT scale the drawing - any errors or omissions shall be reported to Stantec without delay.  
The Copyrights to all designs and drawings are the property of Stantec. Reproduction or use for any purpose other than that authorized by Stantec is forbidden.

- Legend**
- AREA ID
  - RUNOFF COEFFICIENT
  - STORM DRAINAGE AREA ha.
  - STORM DRAINAGE BOUNDARY
  - DIRECTION OF OVERLAND FLOW
  - PROPOSED STORM SEWER
  - PROPOSED CATCHBASIN MANHOLE
  - PROPOSED CATCHBASIN
  - EXISTING STORM SEWER
  - EXISTING CATCHBASIN
  - THERMAL INSULATION ON STORM SEWER WHERE COVER IS LESS THAN 2.0m
  - CIRCULAR ORFICE

### Notes

Revision	By	Appd.	YY.MM.DD
3	MJS	KS	24.04.24
2	MJS	KS	24.03.19
1	WJL	KS	23.09.28

File Name: I60401845 BLK3 DB.dwg  
Dwn. MJS Chkd. KS Dgn. MJS  
23.04.08

### Permit-Seal



Client/Project  
NEPEAN TOWN CENTRE DEVELOPMENT CORPORATION  
2934 BASELINE ROAD, SUITE 302, OTTAWA, ON, K2H 1B2  
PH: (613) 518-1864  
SNTC LANDS  
BLOCK 3  
OTTAWA, ON

Title  
STORM DRAINAGE PLAN

Project No. 160401845	Scale 1:400	Sheet 6 of 7	Revision 3
--------------------------	----------------	-----------------	---------------

SD-1