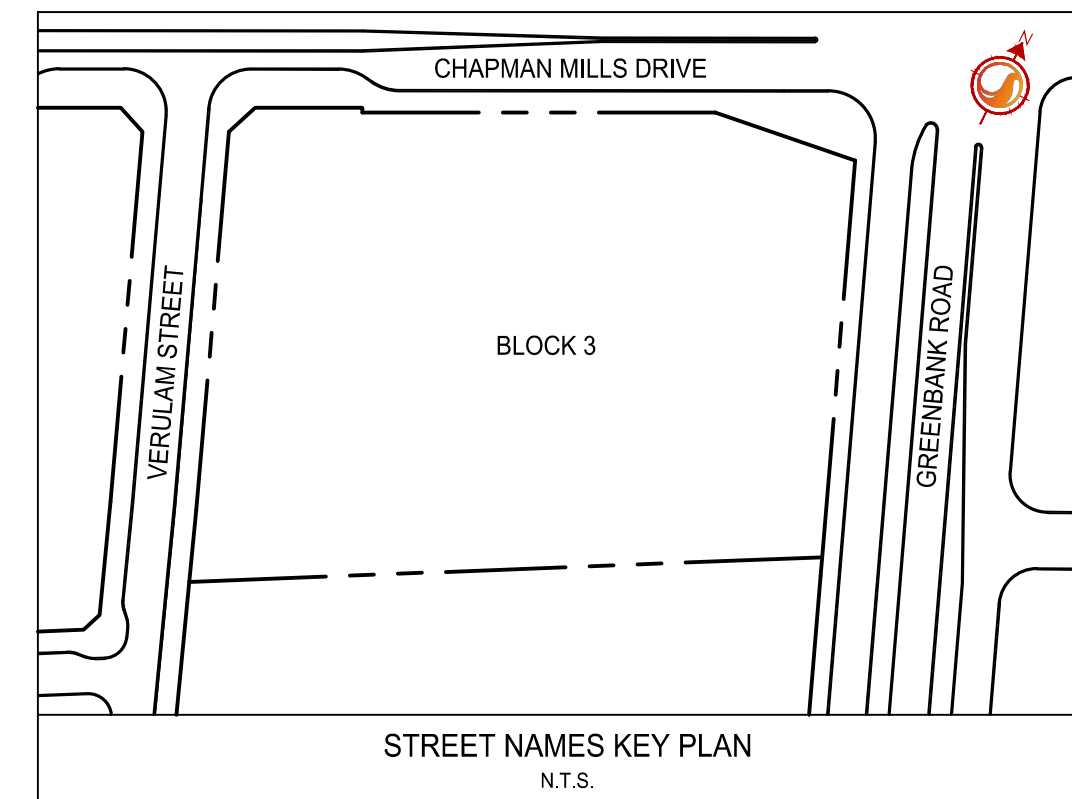
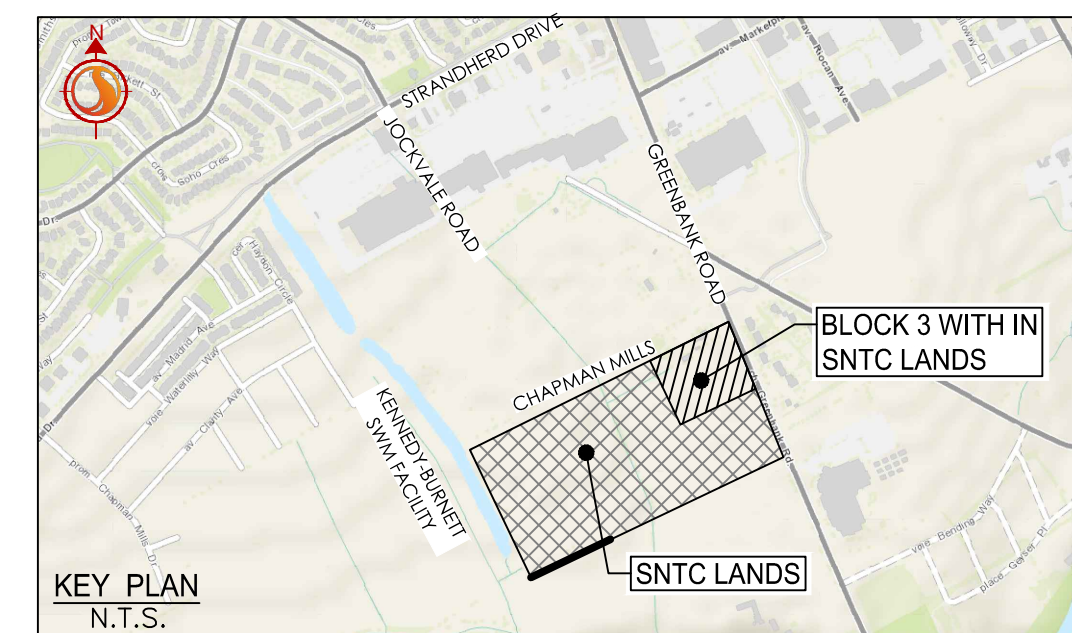




CHAPMAN MILLS DRIVE

FUTURE FINAL DESIGN AND CONSTRUCTION OF CHAPMAN MILLS DRIVE BY OTHERS.



Stantec Consulting Ltd.
400 - 1331 Clyde Avenue
Ottawa ON
Tel. 613.722.4420
www.stantec.com

Copyright Reserved

The Contractor shall verify and be responsible for all dimensions. DO NOT scale the drawing - any errors or omissions shall be reported to Stantec without delay. The Copyrights to all designs and drawings are the property of Stantec. Reproduction or use for any purpose other than that authorized by Stantec is forbidden.

Legend

- SANITARY DRAINAGE AREA ID#
- POPULATION COUNT
- SANITARY DRAINAGE AREA
- SANITARY DRAINAGE AREA
- PROPOSED SANITARY SEWER
- EXISTING SANITARY SEWER

Notes

Revision	By	Appd.	YY.MM.DD
3	MJS	KS	24.04.24
2	MJS	KS	24.03.19
1	WJL	KS	23.09.28

Permit-Seal



Client/Project
NEPEAN TOWN CENTRE DEVELOPMENT CORPORATION
2934 BASELINE ROAD, SUITE 302, OTTAWA, ON, K2H 1B2
PH: (613) 518-1864
SNTC LANDS
BLOCK 3
OTTAWA, ON

Title
SANITARY DRAINAGE PLAN

Project No.	Scale	
160401845	0 4 12 20m 1:400	
Drawing No.	Sheet	Revision
SA-1	7 of 7	3