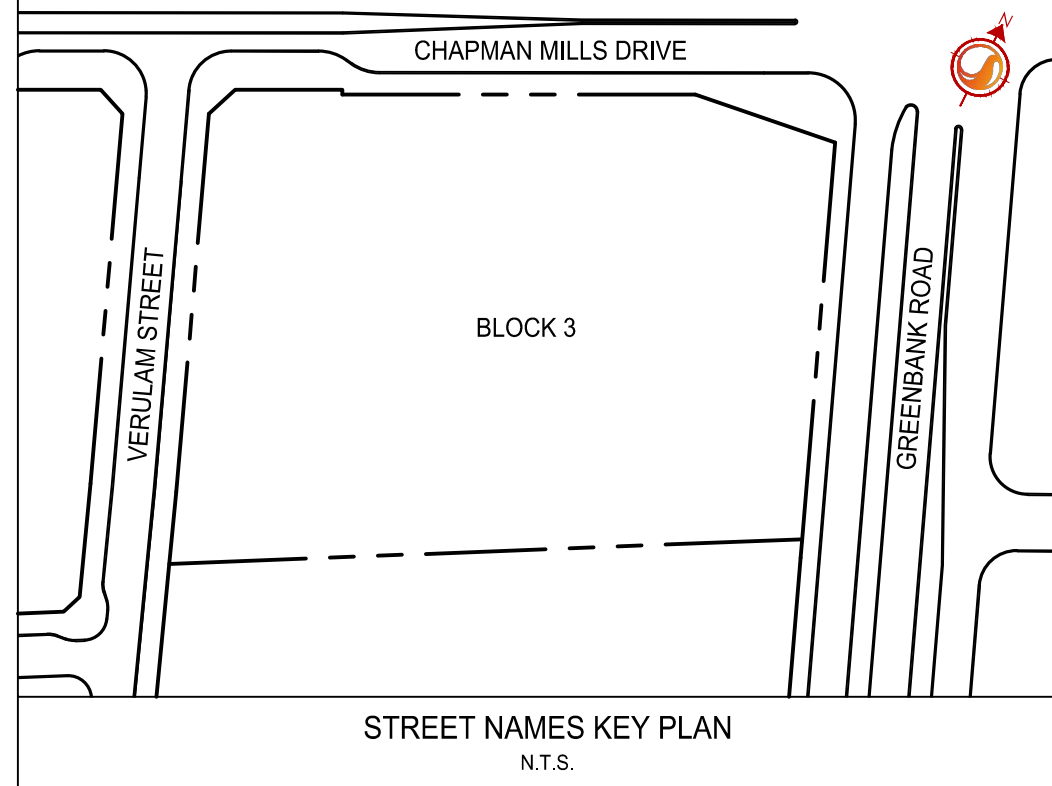
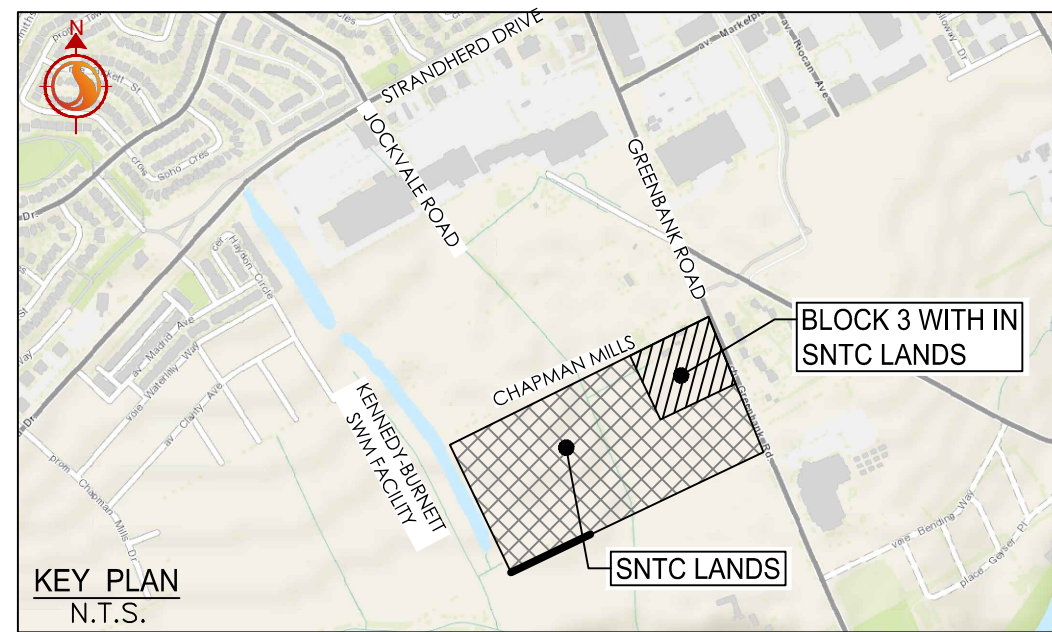
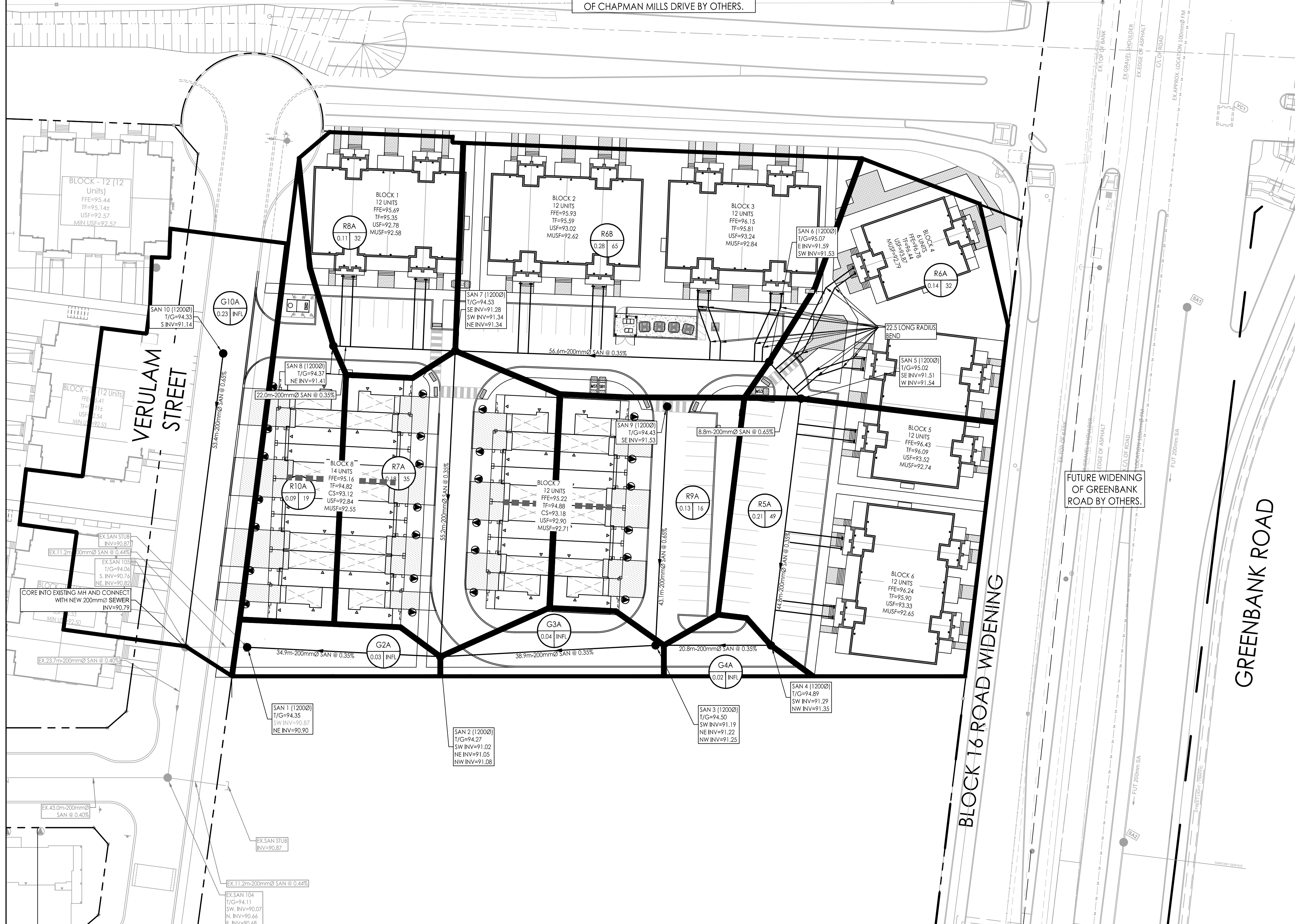




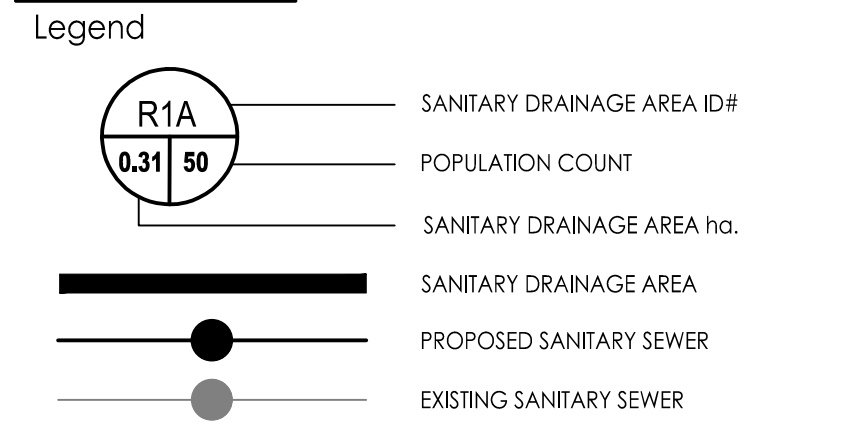
CHAPMAN MILLS DRIVE

FUTURE FINAL DESIGN AND CONSTRUCTION OF CHAPMAN MILLS DRIVE BY OTHERS.



Stantec Consulting Ltd.
400 - 1331 Clyde Avenue
Ottawa ON
Tel. 613.722.4420
www.stantec.com

Copyright Reserved
The Contractor shall verify and be responsible for all dimensions. DO NOT scale the drawing - any errors or omissions shall be reported to Stantec without delay.
The Copyrights to all designs and drawings are the property of Stantec. Reproduction or use for any purpose other than that authorized by Stantec is forbidden.



Notes

5	REVISED AS PER SITE PLAN	ZW	KS	24.10.03	
4	ISSUED FOR APPROVAL	ZW	KS	24.08.26	
3	REVISED AS PER SITE PLAN AND CITY COMMENTS	MJS	KS	24.04.26	
2	REVISED AS PER SITE PLAN	MJS	KS	24.03.19	
1	ISSUED FOR REVIEW	WJA	KS	23.09.08	
Revision		By	Appd.	YY.MM.DD	
File Name: 160401845 BLK3 DB.dwg		MJS	KS	MJS	23.06.08
		Dwn.	Chkd.	Dgn.	YY.MM.DD



Client/Project
NEPEAN TOWN CENTRE DEVELOPMENT CORPORATION
2934 BASELINE ROAD, SUITE 302, OTTAWA, ON, K2H 1B2
PH: (613) 518-1864
SNTC LANDS
BLOCK 3
OTTAWA, ON

Title
SANITARY DRAINAGE PLAN

Project No.	Scale	0 4 12 20m
160401845	1:400	
Drawing No.	Sheet	Revision
SA-1	7 of 7	3

APPROVED
By Lily Xu at 3:37 pm, Oct 21, 2024

LILY XU, MCIP, RPP
MANAGER, DEVELOPMENT REVIEW SOUTH
PLANNING, DEVELOPMENT, AND BUILDING SERVICES
DEPARTMENT, CITY OF OTTAWA

U:\1\160401845\160401845 design\drawing\160401845 BLK3 DB.dwg
 2024/10/21 3:37 PM Lily Xu (p. 1)

D07-12-21-0053