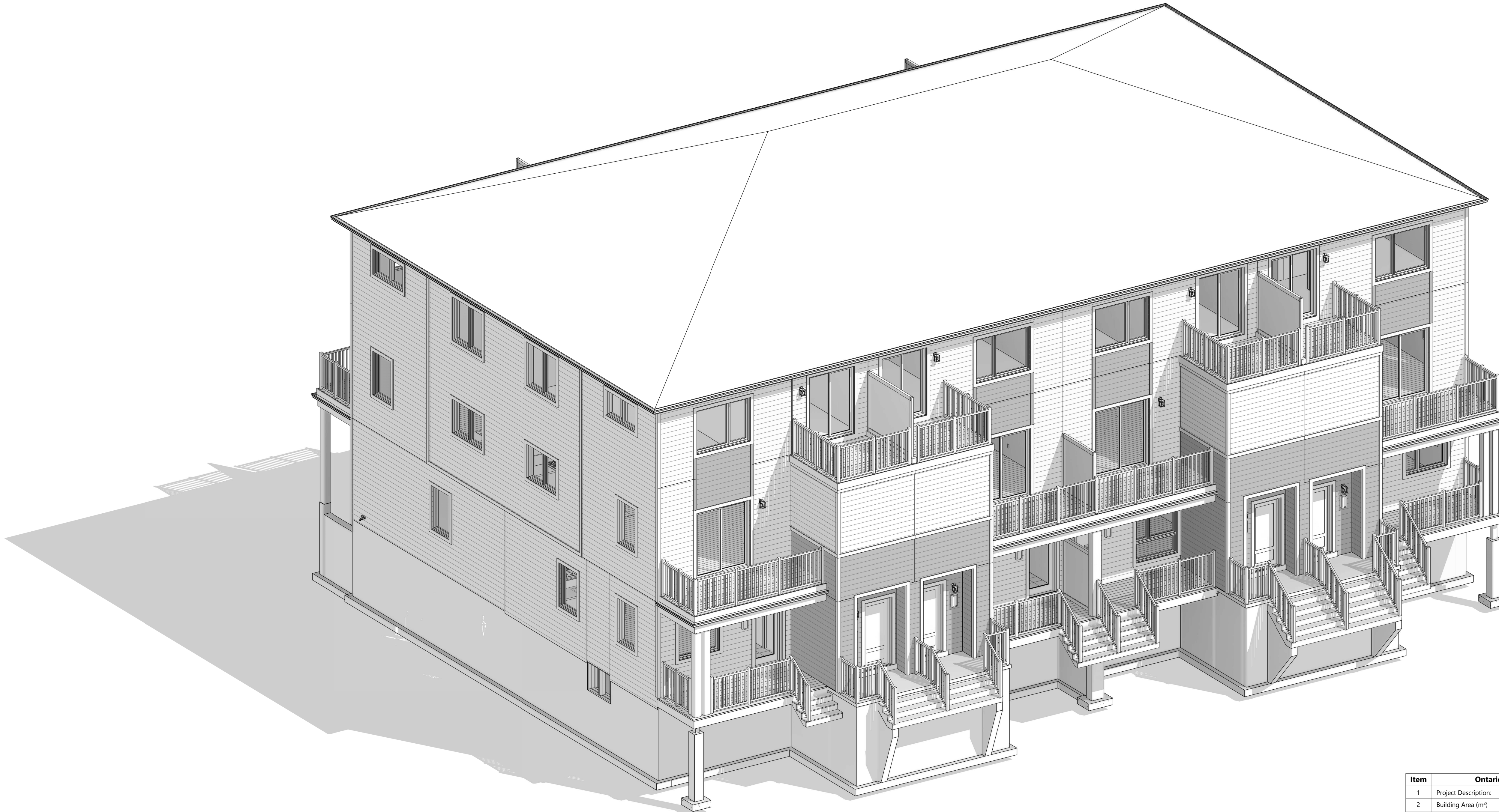


SNTC PROMENADE 5 BLOCK 5 TRANSITIONAL (TN)

ARCHITECT DISCLAIMER
COPYRIGHT OF THIS DRAWING AND DESIGN IS RESERVED BY THE DESIGNER. THE DRAWING AND ALL ASSOCIATED DOCUMENTS ARE AN INSTRUMENT OF SERVICE BY THE DESIGNER. THE DRAWING AND THE INFORMATION CONTAINED THEREIN MAY NOT BE REPRODUCED IN WHOLE OR IN PART WITHOUT PRIOR WRITTEN PERMISSION OF THE DESIGNER. THESE CONTRACT DOCUMENTS ARE THE PROPERTY OF THE ARCHITECT. THE ARCHITECT BEARS NO RESPONSIBILITY FOR THE INTERPRETATION OF THESE DOCUMENTS BY THE CONTRACTOR UPON WRITTEN APPLICATION THE ARCHITECT WILL PROVIDE WRITTEN/GRAPHIC CLARIFICATION OR SUPPLEMENTARY INFORMATION REGARDING THE INTENT OF THE CONTRACT DOCUMENTS. THE ARCHITECT WILL REVIEW SHOP DRAWINGS SUBMITTED BY THE CONTRACTOR FOR DESIGN CONFORMANCE ONLY. DRAWINGS ARE NOT TO BE SCALED FOR CONSTRUCTION. CONTRACTOR TO VERIFY ALL EXISTING CONDITIONS AND DIMENSIONS REQUIRED TO PERFORM THE WORK AND REPORT ANY DISCREPANCIES WITH THE CONTRACT DOCUMENTS TO THE ARCHITECT BEFORE COMMENCING WORK. POSITIONS OF EXPOSED OR FINISHED MECHANICAL OR ELECTRICAL DEVICES, FITTINGS, AND FIXTURES ARE INDICATED ON ARCHITECTURAL DRAWINGS. THE LOCATIONS SHOWN ON THE ARCHITECTURAL DRAWINGS GOVERN OVER THE MECHANICAL AND ELECTRICAL DRAWINGS. THOSE ITEMS NOT CLEARLY LOCATED WILL BE LOCATED AS DIRECTED BY THE ARCHITECT. THESE DRAWINGS ARE NOT TO BE USED FOR CONSTRUCTION UNLESS NOTED BELOW AS "ISSUED FOR CONSTRUCTION" ALL WORK TO BE CARRIED OUT IN CONFORMANCE WITH THE CODE AND BYLAWS OF THE AUTHORITIES HAVING JURISDICTION. THE DESIGNER OF THESE PLANS AND SPECIFICATIONS GIVES NO WARRANTY OR REPRESENTATION TO ANY PARTY ABOUT THE CONSTRUCTIBILITY OF THE REPRESENTED BY THEM. ALL CONTRACTORS OR SUBCONTRACTORS MUST SATISFY THEMSELVES WHEN BIDDING AND AT ALL TIMES THAT THEY CAN PROPERLY CONSTRUCT THE WORK REPRESENTED BY THESE PLANS.

DRAWING LIST

SNTCS.BLK05 - A0.00	COVER SHEET
SNTCS.BLK05 - A0.01	AREA CALCULATIONS
SNTCS.BLK05 - A0.02	LIMITING DISTANCE
SNTCS.BLK05 - A1.00	BASEMENT PLAN
SNTCS.BLK05 - A1.10	GROUND FLOOR PLAN
SNTCS.BLK05 - A2.00	FRONT ELEVATION
SNTCS.BLK05 - A2.10	LEFT ELEVATION - UPG
SNTCS.BLK05 - A2.20	REAR ELEVATION
SNTCS.BLK05 - A2.30	RIGHT ELEVATION



ARCHITECT STAMP



ISSUED / REVISION CHART

NO.	ISSUED FOR PERMIT	DATE
01	ISSUED FOR PERMIT	2024/08/23

Item	Ontario Building Code Data Matrix Parts 9 - Block 5	OBC Reference
1	Project Description: New Construction Building of 12 Units, Back-to-Back Stacked Townhouse	1.1.2.4[A]
2	Building Area (m ²) 483.89 m ²	1.1.2.4[A]
3	Gross Area (m ²) 1393.07 m ²	1.1.2.4[A]
4	Major Occupancy(s) Group C, Residential Occupancies	9.10.2
5	Building Height (m) 11.33m (37' - 2")	1.1.2.4[A]
6	Number of Storeys Above Grade 3 Below Grade 1	1.1.2.4 [A] & 9.10.4
7	Fire Alarm required Not Required	9.10.18
8	Smoke Alarm required Location: On each storey including basement and each sleeping room and between sleeping rooms	9.10.18
9	Minimum FRR for Structural Members Residential 45 Min	9.10.8.1
10	Separation of Residential Suites 1 Hour	9.10.9.14.
11	Protection of Soffits between Units	9.10.12.4.

NOTE TO COORDINATE:
-HEAT PUMP DRAWINGS WITH THE INSTALLATION OF BOREHOLES AND CONNECTIONS
-USE DRAWINGS FOR WIND ENCLOSURES AND INSTALLATION OF CABES BELOW FOOTINGS
-WATER AND SEWAGE

APPROVED

By Lily Xu at 3:51 pm, Oct 21, 2024

LILY XU, MCIP, RPP
MANAGER, DEVELOPMENT REVIEW SOUTH
PLANNING, DEVELOPMENT, AND BUILDING SERVICES
DEPARTMENT, CITY OF OTTAWA

COVER SHEET

**SNTCS BLOCK 5
TRANSITIONAL (TN)**

SOUTH NEPEAN TOWN CENTRE
3288 GREENBANK ROAD
CITY OF OTTAWA

CITY PLAN NO. CITY FILE NO.

SHEET SIZE 24"x36"
SCALE 3/16" = 1'-0"
ISSUE DATE 2024/08/27

PAGE A0.00

ARCHITECT DISCLAIMER
 COPYRIGHT OF THIS DRAWING AND DESIGN IS RESERVED BY THE DESIGNER. THE DRAWING AND ALL ASSOCIATED DOCUMENTS ARE AN INSTRUMENT OF SERVICE BY THE DESIGNER. THE DRAWING AND THE INFORMATION CONTAINED THEREIN MAY NOT BE REPRODUCED IN WHOLE OR IN PART WITHOUT PRIOR WRITTEN PERMISSION OF THE DESIGNER. THESE CONTRACT DOCUMENTS ARE THE PROPERTY OF THE ARCHITECT. THE ARCHITECT BEARS NO RESPONSIBILITY FOR THE INTERPRETATION OF THESE DOCUMENTS BY THE CONTRACTOR UPON WRITTEN APPLICATION THE ARCHITECT WILL PROVIDE WRITTEN GRAPHIC CLARIFICATION OR SUPPLEMENTARY INFORMATION REGARDING THE INTENT OF THE CONTRACT DOCUMENTS. THE ARCHITECT WILL REVIEW SHOP DRAWINGS SUBMITTED BY THE CONTRACTOR FOR DESIGN CONFORMANCE ONLY. DRAWINGS ARE NOT TO BE SCALED FOR CONSTRUCTION. CONTRACTOR TO VERIFY ALL EXISTING CONDITIONS AND DIMENSIONS REQUIRED TO PERFORM THE WORK AND REPORT ANY DISCREPANCIES WITH THE CONTRACT DOCUMENTS TO THE ARCHITECT BEFORE COMMENCING WORK. POSITIONS OF EXPOSED OR FINISHED MECHANICAL OR ELECTRICAL DEVICES, FITTINGS, AND FIXTURES ARE INDICATED ON ARCHITECTURAL DRAWINGS. THE LOCATIONS SHOWN ON THE ARCHITECTURAL DRAWINGS GOVERN OVER THE MECHANICAL AND ELECTRICAL DRAWINGS. THOSE ITEMS NOT CLEARLY LOCATED WILL BE LOCATED AS DIRECTED BY THE ARCHITECT. THESE DRAWINGS ARE NOT TO BE USED FOR CONSTRUCTION UNLESS NOTED BELOW AS 'ISSUED FOR CONSTRUCTION' ALL WORK TO BE CARRIED OUT IN CONFORMANCE WITH THE CODE AND BYLAWS OF THE AUTHORITIES HAVING JURISDICTION. THE DESIGNER OF THESE PLANS AND SPECIFICATIONS GIVES NO WARRANTY OR REPRESENTATION TO ANY PARTY ABOUT THE CONSTRUCTIBILITY OF THE REPRESENTED BY THEM. ALL CONTRACTORS OR SUBCONTRACTORS MUST SATISFY THEMSELVES WHEN BIDDING AND AT ALL TIMES THAT THEY CAN PROPERLY CONSTRUCT THE WORK REPRESENTED BY THESE PLANS.



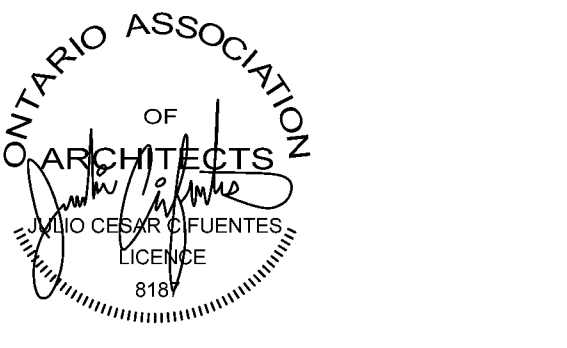
**FRONT ELEVATION
 BLOCK 5, WEST SIDE**

APPROVED
 By Lily Xu at 3:51 pm, Oct 21, 2024

Lily Xu

LILY XU, MCIP, RPP
 MANAGER, DEVELOPMENT REVIEW SOUTH
 PLANNING, DEVELOPMENT, AND BUILDING SERVICES
 DEPARTMENT, CITY OF OTTAWA

ARCHITECT STAMP



ISSUED / REVISION CHART

NO.	DESCRIPTION	DATE
01	ISSUED FOR PERMIT	2024/08/23

**FRONT
 ELEVATION**

**SNTCS BLOCK 5
 TRANSITIONAL (TN)**

SOUTH NEPEAN TOWN CENTRE

3288 GREENBANK ROAD
 CITY OF OTTAWA

FOR APPLICATION AND CONSTRUCTION INSTALLATION ON THE ABOVE MATERIALS SEE WINDOW TRIM DETAIL, FREEZE BOARD DETAILS AND OTHER TRIM DETAILS SHOWN ON FRONT ELEVATION SHEETS OR IN EXTERNAL CONSTRUCTION DETAILS SHEETS. MAXIMUM BUILDING HEIGHT @ HIGHEST GRADE 34'-9" (10.3m)

LEGEND

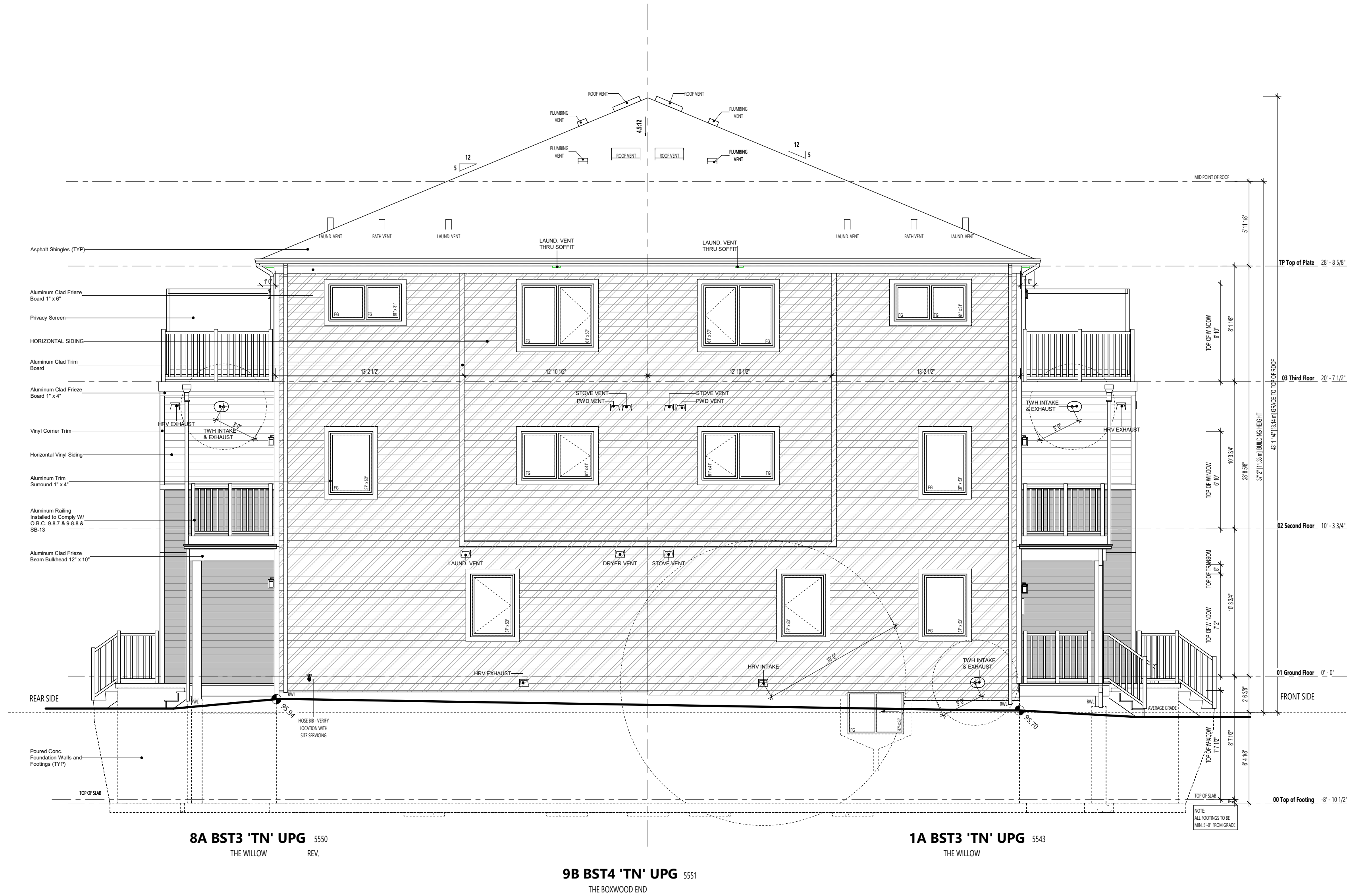
NON-COMBUSTIBLE STEEL SIDING

bim STUDIO
 636 KING ST W,
 3RD FLOOR, TORONTO, ON,
 M5V 1M7,
 bim@bimstudio.ca

organica studio + inc.
 architecture | interiors | design | research
 7-145 BIRMINGHAM STREET,
 ETOBICOKE, ON,
 M8V3Z8
 info@organicastudio.ca
 T. 905 832 5758

ARCHITECT DISCLAIMER

COPYRIGHT OF THIS DRAWING AND DESIGN IS RESERVED BY THE DESIGNER. THE DRAWING AND ALL ASSOCIATED DOCUMENTS ARE AN INSTRUMENT OF SERVICE BY THE DESIGNER. THE DRAWING AND THE INFORMATION CONTAINED THEREIN MAY NOT BE REPRODUCED IN WHOLE OR IN PART WITHOUT PRIOR WRITTEN PERMISSION OF THE DESIGNER. THESE CONTRACT DOCUMENTS ARE THE PROPERTY OF THE ARCHITECT. THE ARCHITECT BEARS NO RESPONSIBILITY FOR THE INTERPRETATION OF THESE DOCUMENTS BY THE CONTRACTOR UPON WRITTEN APPLICATION THE ARCHITECT WILL PROVIDE WRITTEN GRAPHIC CLARIFICATION OR SUPPLEMENTARY INFORMATION REGARDING THE INTENT OF THE CONTRACT DOCUMENTS. THE ARCHITECT WILL REVIEW SHOP DRAWINGS SUBMITTED BY THE CONTRACTOR FOR DESIGN CONFORMANCE ONLY. DRAWINGS ARE NOT TO BE SCALED FOR CONSTRUCTION. CONTRACTOR TO VERIFY ALL EXISTING CONDITIONS AND DIMENSIONS REQUIRED TO PERFORM THE WORK AND REPORT ANY DISCREPANCIES WITH THE CONTRACT DOCUMENTS TO THE ARCHITECT BEFORE COMMENCING WORK. POSITIONS OF EXPOSED OR FINISHED MECHANICAL OR ELECTRICAL DEVICES, FITTINGS, AND FIXTURES ARE INDICATED ON ARCHITECTURAL DRAWINGS. THE LOCATIONS SHOWN ON THE ARCHITECTURAL DRAWINGS GOVERN OVER THE MECHANICAL AND ELECTRICAL DRAWINGS. THOSE ITEMS NOT CLEARLY LOCATED WILL BE LOCATED AS DIRECTED BY THE ARCHITECT. THESE DRAWINGS ARE NOT TO BE USED FOR CONSTRUCTION UNLESS NOTED BELOW AS "ISSUED FOR CONSTRUCTION" ALL WORK TO BE CARRIED OUT IN CONFORMANCE WITH THE CODE AND BYLAWS OF THE AUTHORITIES HAVING JURISDICTION. THE DESIGNER OF THESE PLANS AND SPECIFICATIONS GIVES NO WARRANTY OR REPRESENTATION TO ANY PARTY ABOUT THE CONSTRUCTIBILITY OF THE REPRESENTED BY THEM. ALL CONTRACTORS OR SUBCONTRACTORS MUST SATISFY THEMSELVES WHEN BIDDING AND AT ALL TIMES THAT THEY CAN PROPERLY CONSTRUCT THE WORK REPRESENTED BY THESE PLANS.



LEFT ELEVATION - UPG
 BLOCK 5, NORTH SIDE

APPROVED
 By Lily Xu at 3:51 pm, Oct 21, 2024

LILY XU, MCIP, RPP
 MANAGER, DEVELOPMENT REVIEW SOUTH
 PLANNING, DEVELOPMENT, AND BUILDING SERVICES
 DEPARTMENT, CITY OF OTTAWA

ARCHITECT STAMP



ISSUED / REVISION CHART

NO.	DESCRIPTION	DATE
01	ISSUED FOR PERMIT	2024/08/23

LEFT ELEVATION - UPG

SNTCS BLOCK 5
 TRANSITIONAL (TN)

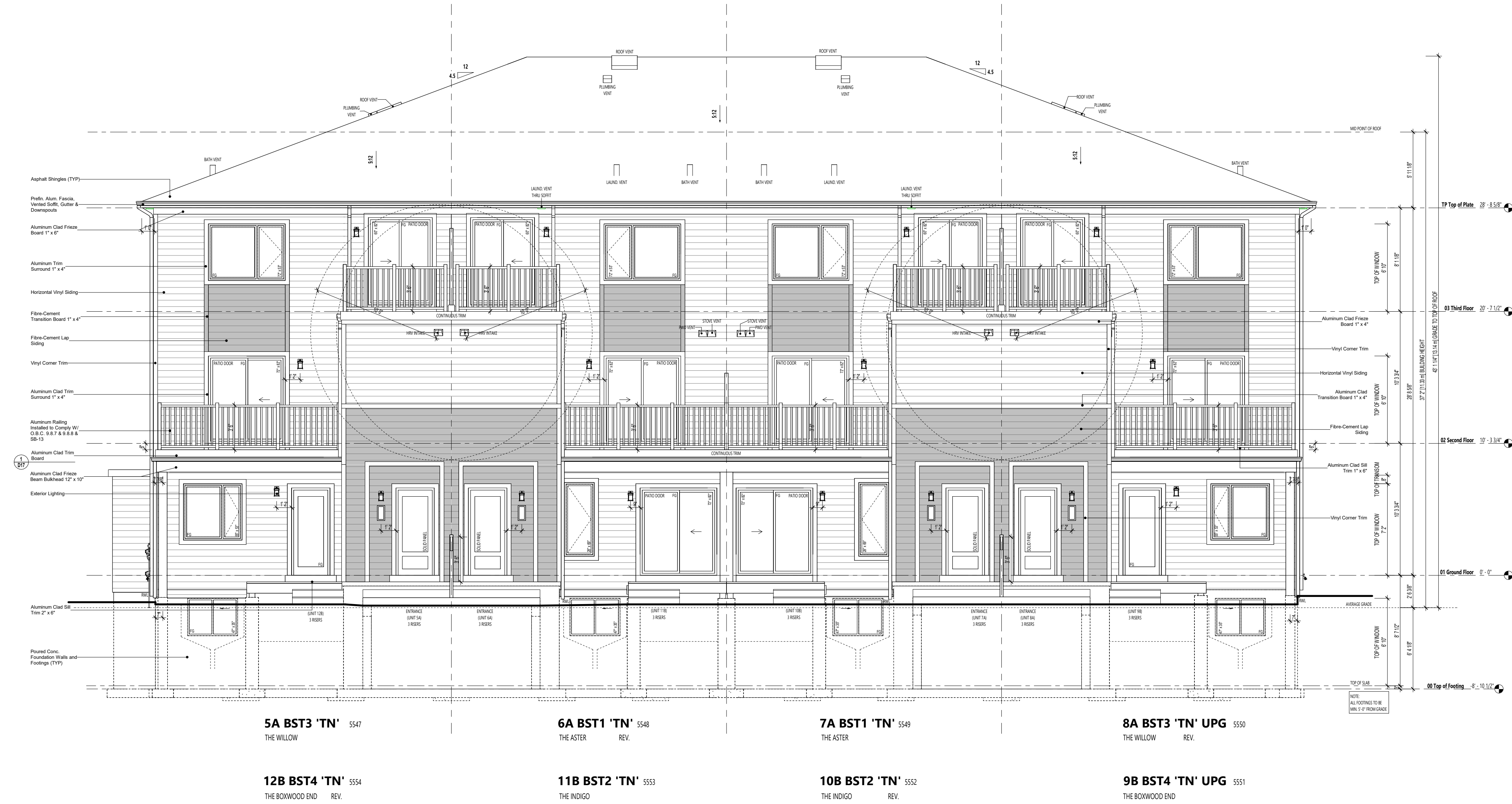
SOUTH NEPEAN TOWN CENTRE

3288 GREENBANK ROAD
 CITY OF OTTAWA

CITY PLAN NO. CITY FILE NO.

FOR APPLICATION AND CONSTRUCTION INSTALLATION ON THE ABOVE MATERIALS SEE:
WINDOW TRIM DETAIL, FREEZE BOARD DETAILS AND OTHER TRIM DETAILS SHOWN ON FRONT ELEVATION SHEETS OR IN EXTERNAL CONSTRUCTION DETAILS SHEETS.
MAXIMUM BUILDING HEIGHT @ HIGHEST GRADE 34'-9" (10.59m)

ARCHITECT DISCLAIMER
COPYRIGHT OF THIS DRAWING AND DESIGN IS RESERVED BY THE DESIGNER. THE DRAWING AND ALL ASSOCIATED DOCUMENTS ARE AN INSTRUMENT OF SERVICE BY THE DESIGNER. THE DRAWING AND THE INFORMATION CONTAINED THEREIN MAY NOT BE REPRODUCED IN WHOLE OR IN PART WITHOUT PRIOR WRITTEN PERMISSION OF THE DESIGNER. THESE CONTRACT DOCUMENTS ARE THE PROPERTY OF THE ARCHITECT. THE ARCHITECT BEARS NO RESPONSIBILITY FOR THE INTERPRETATION OF THESE DOCUMENTS BY THE CONTRACTOR UPON WRITTEN APPLICATION THE ARCHITECT WILL PROVIDE WRITTEN/GRAPHIC CLARIFICATION OR SUPPLEMENTARY INFORMATION REGARDING THE INTENT OF THE CONTRACT DOCUMENTS. THE ARCHITECT WILL REVIEW SHOP DRAWINGS SUBMITTED BY THE CONTRACTOR FOR DESIGN CONFORMANCE ONLY. DRAWINGS ARE NOT TO BE SCALED FOR CONSTRUCTION. CONTRACTOR TO VERIFY ALL EXISTING CONDITIONS AND DIMENSIONS REQUIRED TO PERFORM THE WORK AND REPORT ANY DISCREPANCIES WITH THE CONTRACT DOCUMENTS TO THE ARCHITECT BEFORE COMMENCING WORK. POSITIONS OF EXPOSED OR FINISHED MECHANICAL OR ELECTRICAL DEVICES, FITTINGS, AND FIXTURES ARE INDICATED ON ARCHITECTURAL DRAWINGS. THE LOCATIONS SHOWN ON THE ARCHITECTURAL DRAWINGS GOVERN OVER THE MECHANICAL AND ELECTRICAL DRAWINGS. THOSE ITEMS NOT CLEARLY LOCATED WILL BE LOCATED AS DIRECTED BY THE ARCHITECT. THESE DRAWINGS ARE NOT TO BE USED FOR CONSTRUCTION UNLESS NOTED BELOW AS "ISSUED FOR CONSTRUCTION" ALL WORK TO BE CARRIED OUT IN CONFORMANCE WITH THE CODE AND BYLAWS OF THE AUTHORITIES HAVING JURISDICTION. THE DESIGNER OF THESE PLANS AND SPECIFICATIONS GIVES NO WARRANTY OR REPRESENTATION TO ANY PARTY ABOUT THE CONSTRUCTABILITY OF THE REPRESENTED BY THEM. ALL CONTRACTORS OR SUBCONTRACTORS MUST SATISFY THEMSELVES WHEN BIDDING AND AT ALL TIMES THAT THEY CAN PROPERLY CONSTRUCT THE WORK REPRESENTED BY THESE PLANS.

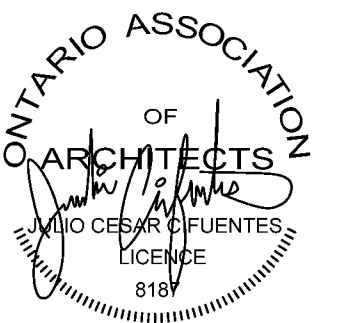


**REAR ELEVATION
BLOCK 5, EAST SIDE**

APPROVED
By Lily Xu at 3:51 pm, Oct 21, 2024

LILY XU, MCIP, RPP
MANAGER, DEVELOPMENT REVIEW SOUTH
PLANNING, DEVELOPMENT, AND BUILDING SERVICES
DEPARTMENT, CITY OF OTTAWA

ARCHITECT STAMP



ISSUED / REVISION CHART

NO.	ISSUED FOR PERMIT	DATE
01	ISSUED FOR PERMIT	2024/08/23

REAR ELEVATION

**SNTC5 BLOCK 5
TRANSITIONAL (TN)**

SOUTH NEPEAN TOWN CENTRE
3288 GREENBANK ROAD
CITY OF OTTAWA

FOR APPLICATION AND CONSTRUCTION INSTALLATION ON THE ABOVE MATERIALS SEE:
 WINDOW TRIM DETAIL, FREEZE BOARD DETAILS AND OTHER TRIM DETAILS SHOWN ON FRONT ELEVATION SHEETS OR IN EXTERNAL CONSTRUCTION DETAILS SHEETS.
 MAXIMUM BUILDING HEIGHT @ HIGHEST GRADE 34'-9" (10.5m)

LEGEND

NON-COMBUSTIBLE STEEL SIDING



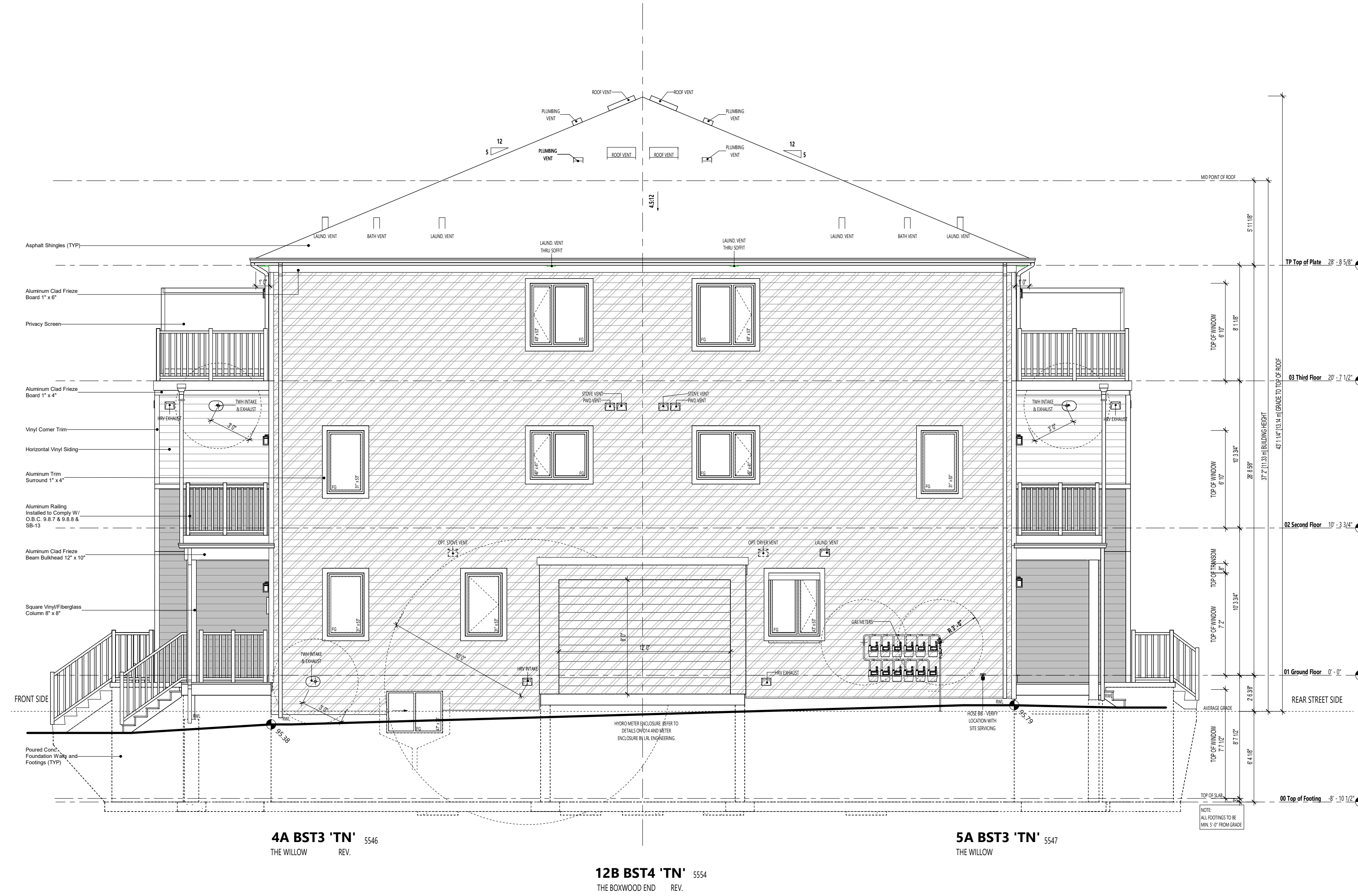
636 KING ST. W.
 3RD FLOOR, TORONTO, ON,
 M5V 1M7,
 bim@bimstudio.ca



architecture | interiors | design | research
 7-145 BIRMINGHAM STREET,
 ETOBICOKE, ON,
 M8V3Z8
 info@organicastudio.ca
 T. 905 832 5758

ARCHITECT DISCLAIMER

COPYRIGHT OF THIS DRAWING AND DESIGN IS RESERVED BY THE DESIGNER. THE DRAWING AND ALL ASSOCIATED DOCUMENTS ARE AN INSTRUMENT OF SERVICE BY THE DESIGNER. THE DRAWING AND THE INFORMATION CONTAINED THEREIN MAY NOT BE REPRODUCED IN WHOLE OR IN PART WITHOUT PRIOR WRITTEN PERMISSION OF THE DESIGNER. THESE CONTRACT DOCUMENTS ARE THE PROPERTY OF THE ARCHITECT. THE ARCHITECT BEARS NO RESPONSIBILITY FOR THE INTERPRETATION OF THESE DOCUMENTS BY THE CONTRACTOR UPON WRITTEN APPLICATION THE ARCHITECT WILL PROVIDE WRITTEN/GRAPHIC CLARIFICATION OR SUPPLEMENTARY INFORMATION REGARDING THE INTENT OF THE CONTRACT DOCUMENTS. THE ARCHITECT WILL REVIEW SHOP DRAWINGS SUBMITTED BY THE CONTRACTOR FOR DESIGN CONFORMANCE ONLY. DRAWINGS ARE NOT TO BE SCALED FOR CONSTRUCTION. CONTRACTOR TO VERIFY ALL EXISTING CONDITIONS AND DIMENSIONS REQUIRED TO PERFORM THE WORK AND REPORT ANY DISCREPANCIES WITH THE CONTRACT DOCUMENTS TO THE ARCHITECT BEFORE COMMENCING WORK. POSITIONS OF EXPOSED OR FINISHED MECHANICAL OR ELECTRICAL DEVICES, FITTINGS, AND FIXTURES ARE INDICATED ON ARCHITECTURAL DRAWINGS. THE LOCATIONS SHOWN ON THE ARCHITECTURAL DRAWINGS GOVERN OVER THE MECHANICAL AND ELECTRICAL DRAWINGS. THOSE ITEMS NOT CLEARLY LOCATED WILL BE LOCATED AS DIRECTED BY THE ARCHITECT. THESE DRAWINGS ARE NOT TO BE USED FOR CONSTRUCTION UNLESS NOTED BELOW AS "ISSUED FOR CONSTRUCTION" ALL WORK TO BE CARRIED OUT IN CONFORMANCE WITH THE CODE AND BYLAWS OF THE AUTHORITIES HAVING JURISDICTION. THE DESIGNER OF THESE PLANS AND SPECIFICATIONS GIVES NO WARRANTY OR REPRESENTATION TO ANY PARTY ABOUT THE CONSTRUCTIBILITY OF THE REPRESENTED BY THEM. ALL CONTRACTORS OR SUBCONTRACTORS MUST SATISFY THEMSELVES WHEN BIDDING AND AT ALL TIMES THAT THEY CAN PROPERLY CONSTRUCT THE WORK REPRESENTED BY THESE PLANS.



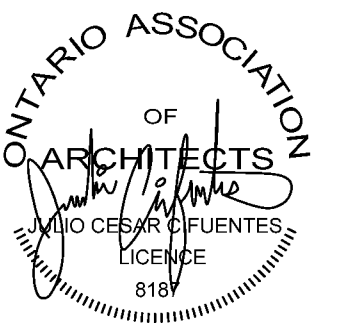
RIGHT ELEVATION
 BLOCKS 5, SOUTH SIDE

APPROVED
 By Lily Xu at 3:51 pm, Oct 21, 2024



LILY XU, MCIP, RPP
 MANAGER, DEVELOPMENT REVIEW SOUTH
 PLANNING, DEVELOPMENT, AND BUILDING SERVICES
 DEPARTMENT, CITY OF OTTAWA

ARCHITECT STAMP



ISSUED / REVISION CHART

NO.	DESCRIPTION	DATE
01	ISSUED FOR PERMIT	2024/08/23

RIGHT ELEVATION

SNTC5 BLOCK 5
 TRANSITIONAL (TN)

SOUTH NEPEAN TOWN CENTRE
 3288 GREENBANK ROAD
 CITY OF OTTAWA