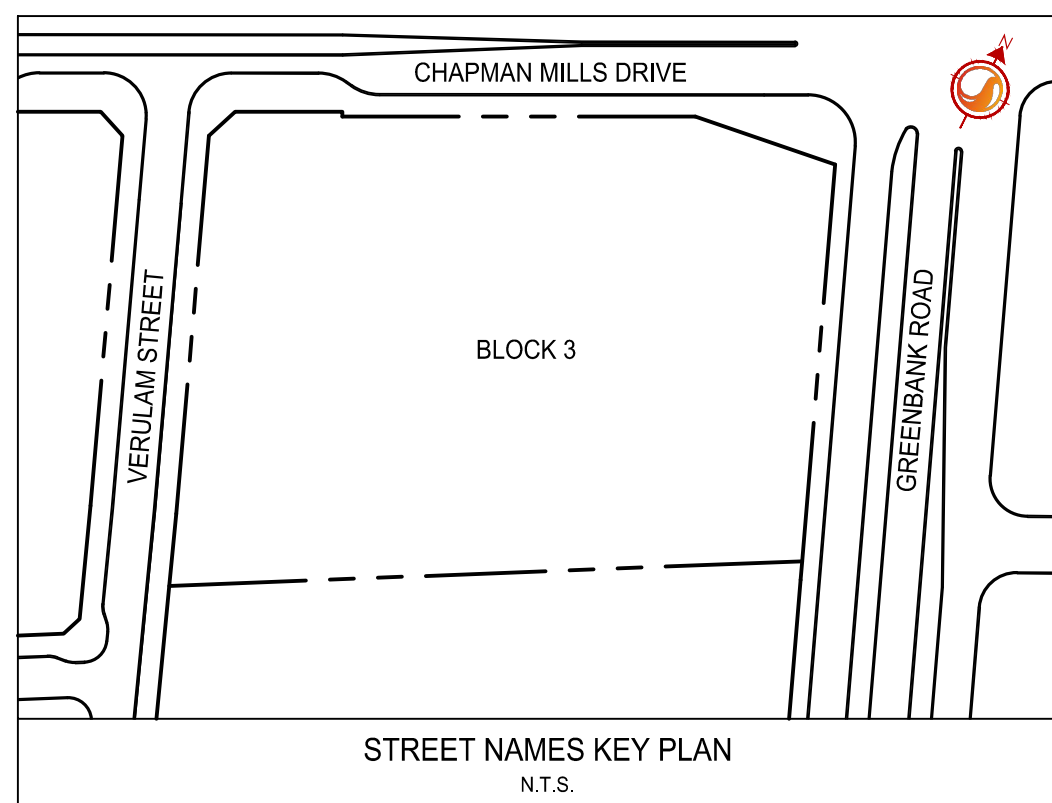
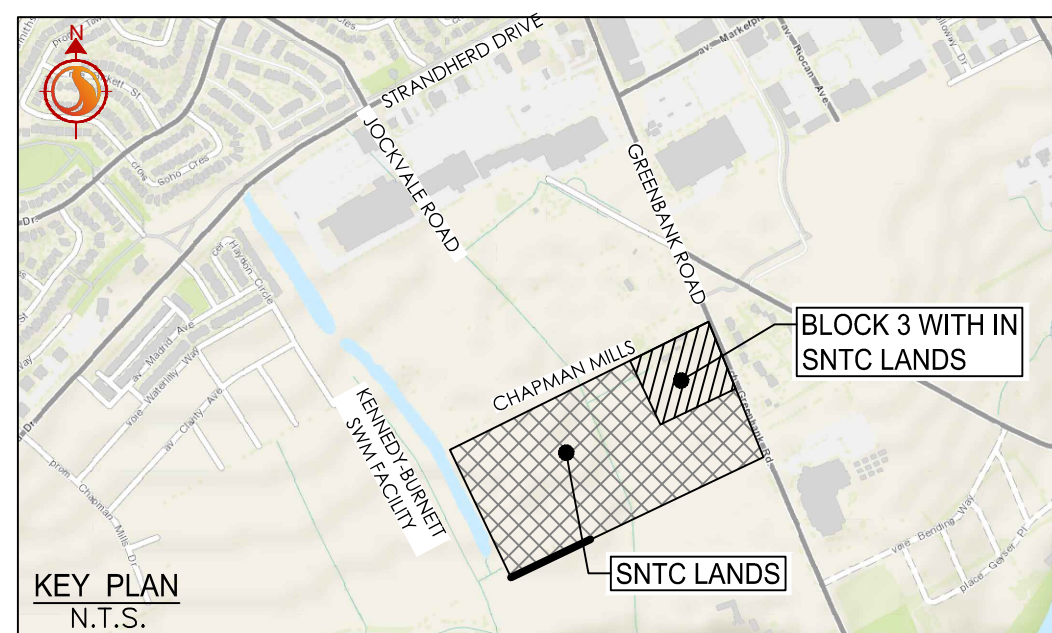


Copyright Reserved
The Contractor shall verify and be responsible for all dimensions. DO NOT scale the drawing - any errors or omissions shall be reported to Stantec without delay.
The Copyrights to all designs and drawings are the property of Stantec. Reproduction or use for any purpose other than that authorized by Stantec is forbidden.



Legend

- ORIGINAL GROUND ELEVATION
- PROPOSED ELEVATION
- PROPOSED LOT CORNER ELEVATION
- EXISTING ELEVATION AT LOT CORNER
- FLOW DIRECTION AND GRADE
- FINISHED FIRST FLOOR ELEVATION
- TOP OF FOUNDATION ELEVATION
- UNDERSIDE OF FOOTING ELEVATION
- MINIMUM UNDERSIDE OF FOOTING ELEVATION
- ENGINEERED FILL REQUIRED
- TERRACING 3:1 SLOPE MAXIMUM (UNLESS OTHERWISE SHOWN)
- DIRECTION OF OVERLAND FLOW
- PROPOSED VALVE BOX
- PROPOSED VALVE CHAMBER
- PROPOSED FIRE HYDRANT
- PROPOSED SANITARY SEWER MANHOLE
- PROPOSED STORM SEWER MANHOLE
- PROPOSED CATCHBASIN MANHOLE
- PROPOSED CATCHBASIN
- PROPOSED DEPRESSED CURB LOCATION
- PROPOSED MOUNTABLE CURB
- MAXIMUM STATIC PONDING LIMITS
- PROPOSED FIREWALL
- ROAD CUT RE-INSTATEMENT AS PER CITY STANDARD R10.

Notes

- PAVEMENT STRUCTURE - CAR PARKING AREAS**
50mm HL-3 or SUPERPAVE 12.5 ASPHALTIC CONCRETE
150 OPSS GRANULAR 'A' BASE
300 OPSS GRANULAR 'B' TYPE II
- PAVEMENT STRUCTURE - ACCESS LANES AND HEAVY TRUCK**
40mm HL-3 or SUPERPAVE 12.5 ASPHALTIC CONCRETE
50mm HL-8 or SUPERPAVE 18.0 ASPHALTIC CONCRETE
150 OPSS GRANULAR 'A' BASE
400 OPSS GRANULAR 'B' TYPE II

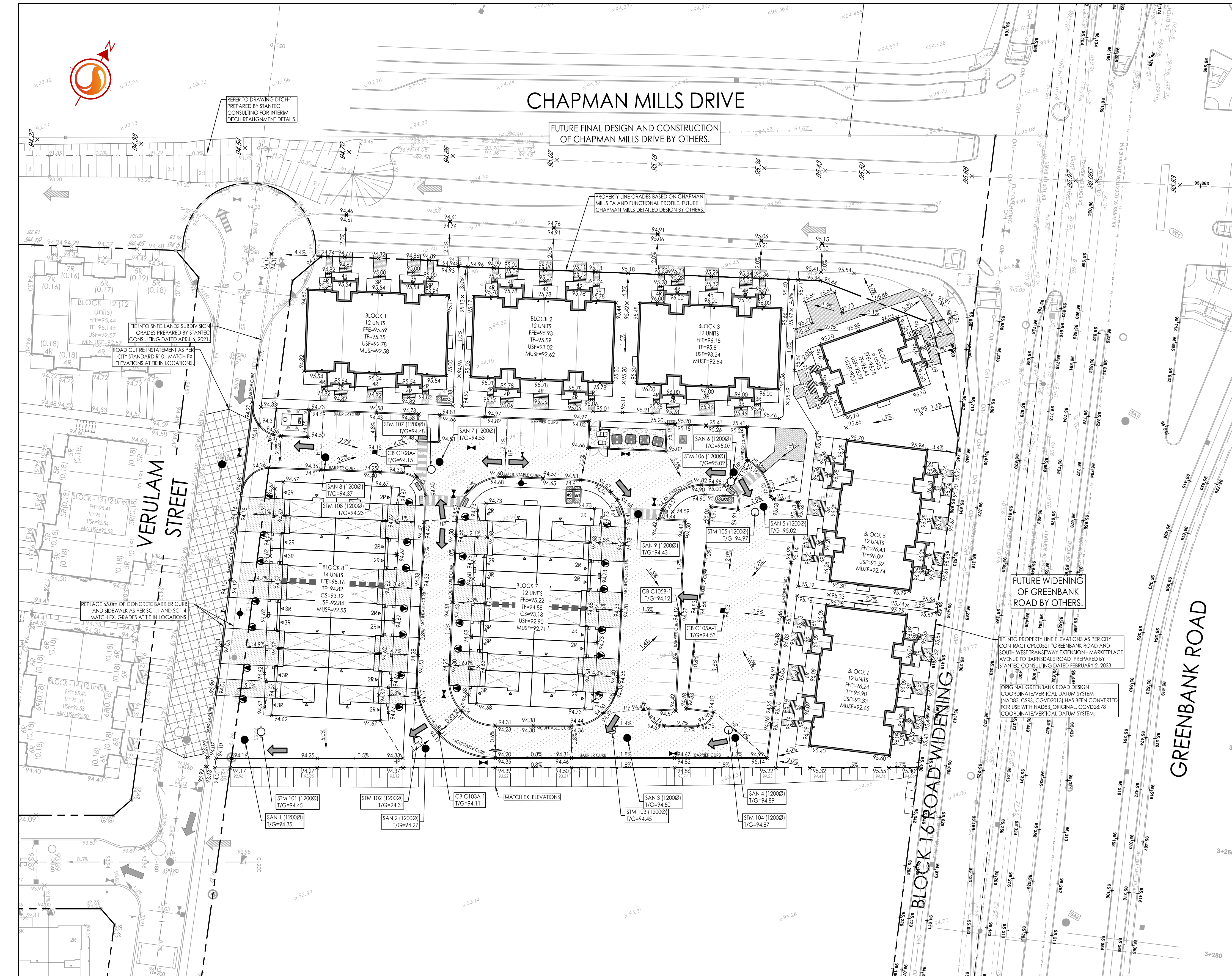
5	REVISED AS PER SITE PLAN	ZW	KS	24.10.03
4	ISSUED FOR APPROVAL	ZW	KS	24.08.26
3	REVISED AS PER SITE PLAN AND CITY COMMENTS	MJS	KS	24.04.26
2	REVISED AS PER SITE PLAN	MJS	KS	24.03.19
1	ISSUED FOR SPA	WJL	KS	23.09.08
Revision		By	Appd.	YY.MM.DD
File Name: 160401845 BLK3 D8.dwg		MJS	KS	MJS
		Dwn.	Chkd.	Dgn.
				YY.MM.DD

Permit-Seal

Client/Project
NEPEAN TOWN CENTRE DEVELOPMENT CORPORATION
2934 BASELINE ROAD, SUITE 302, OTTAWA, ON, K2H 1B2
PH: (613) 518-1864
SNTC LANDS
BLOCK 3
OTTAWA, ON

Title
GRADING PLAN

Project No.	Scale	0	4	12	20m
160401845	1:400				
Drawing No.	Sheet	Revision			
GP-1	4 of 7	4			



APPROVED
By Lily Xu at 3:56 pm, Oct 21, 2024

Lily Xu
LILY XU, MCIP, RPP
MANAGER, DEVELOPMENT REVIEW SOUTH
PLANNING, DEVELOPMENT, AND BUILDING SERVICES
DEPARTMENT, CITY OF OTTAWA