

Surveyor's Certificate
I, CERTIFY THAT
1. This survey and plan are correct and in accordance with the Survey Act and the Survey Regulations and the Land Tax Act and the regulations made under them.
2. The survey was completed on the 13th day of May, 2023.

Notes & Legend

—○—	Survey Monument (Fixed)
—■—	Survey Monument (Found)
—SB—	Standard Iron Bar
—SSB—	Short Standard Iron Bar
—IB—	Iron Bar
—C—	Cut Cross
—CP—	Copper Pin
—SB#—	Spike & Washer
—SSB#—	Short Standard Iron Bar
—IB#—	Iron Bar
—W—	Witness
—M—	Manhole
—(M)—	Access, Annis, O'Sullivan, Vollebek Ltd.
—P1—	Plan 4M-172
—P2—	Plan 4M-6235
—P3—	Plan 4M-645
—P4—	(1473) Plan dated January 18, 1989
—P5—	Instrument 18922
—P6—	Instrument 19871
—P7—	Plan 4M-5529
—P8—	Plan 5M-3189
—P9—	(647) Plan dated October 13, 1981
—P10—	Plan 5M-2429
—FH—	Fire Hydrant
—V—	Valve Chamber (Watermain)
—WV—	Water Valve
—WSP—	Water Stand Post
—MHS—	Maintenance Hole (Storm Sewer)
—MHSI—	Maintenance Hole (Sanitary)
—MH—	Maintenance Hole (Unidentified)
—ST—	Underground Storm Sewer
—S—	Underground Sanitary
—UW—	Underground Water
—UP—	Underground Power
—UC—	Underground Gas
—TC—	Underground Communications
—OW—	Overhead Wires
—CB—	Cable Base
—GM—	Gas Meter
—HM—	Hydro Meter
—FTB—	Ball Terminal Box
—TBC—	Cable Terminal Box
—B—	Building
—S—	Sign
—DP—	Disabled Parking
—CLF—	Chain Link Fence
—BF—	Board Fence
—G—	Gate
—WP—	Wood Pole
—MP—	Metal Pole
—LP—	Light Standard
—M—	Mail Box
—AC—	Air Conditioner
—D—	Diameter
—L—	Location of Elevations
—T—	Top of Wall Elevation
—TCE—	Top of Concrete Curb Elevation
—TWE—	Top of Wall Elevation
—CL—	Centreline
—PL—	Property Line
—CRW—	Concrete Retaining Wall
—RW—	Stone / Interlock Retaining Wall
—HTB—	Hydro Transformer Bolt
—D—	Deciduous Tree
—C—	Coniferous Tree
—HT—	Hydro Transformer
—RT—	Timber Retaining Wall

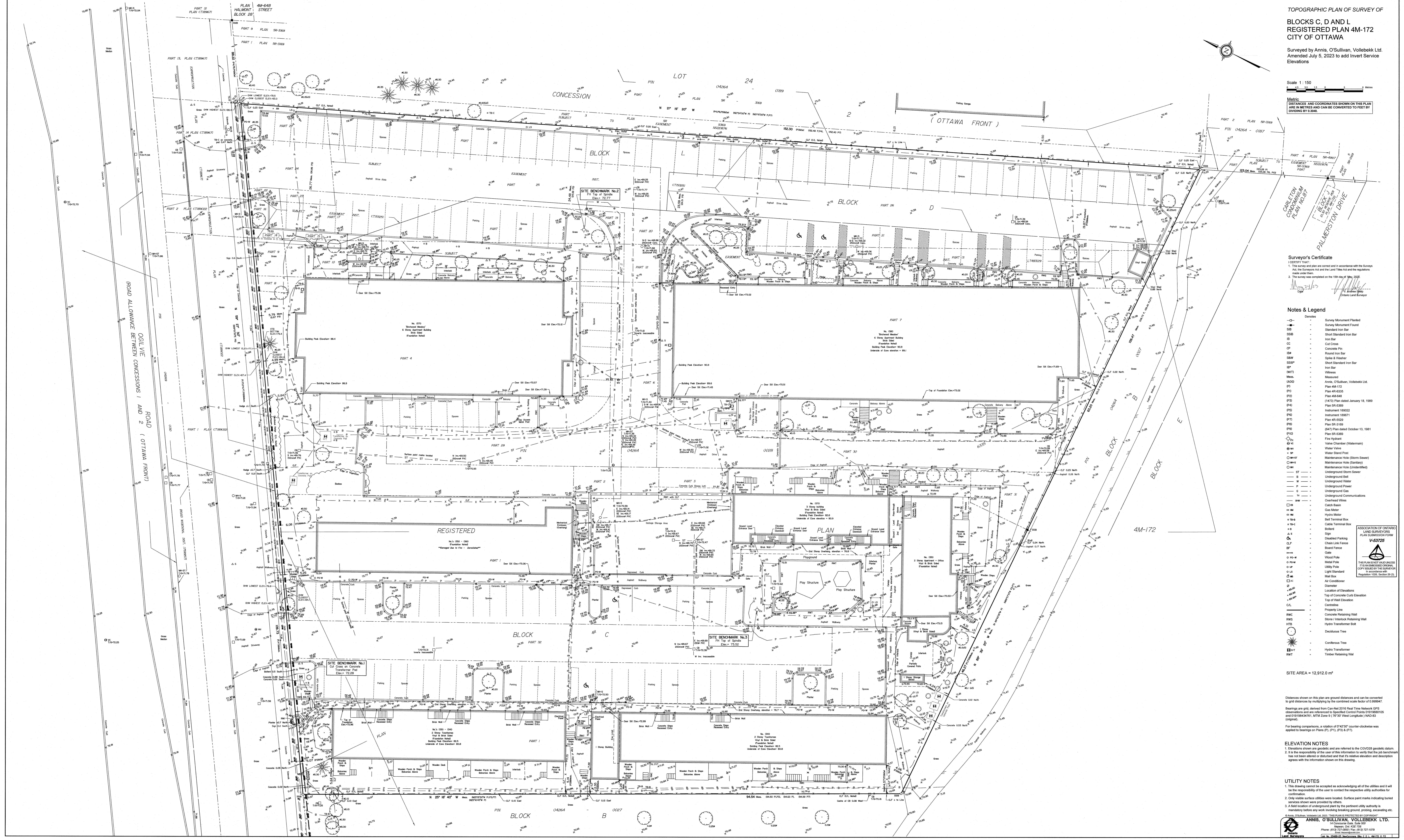
SITE AREA = 12,912.0 m²

Distances shown on this plan are ground distances and can be converted to grid distances by multiplying by the combined scale factor of 0.999841.
Bearings are grid, derived from Can Met 2016 Real Time Network GPS observations and are referenced to Specified Control Points 01819560105 and 01819560451, MTM Zone 18 (70°30' West Longitude) 14N4-83 (original).

For bearing comparisons, a rotation of 0°42'30" counter-clockwise was applied to bearings on Plans P1, P2, P3, P4, P5, P6, P7, P8, P9, P10.

ELEVATION NOTES
1. Elevations shown are geoidal, and are referred to the CGVD28 geoidal datum.
2. It is the responsibility of the user of this information to verify that the job benchmark has not been altered or disturbed and that its relative elevation and description agrees with the information shown on this drawing.

UTILITY NOTES
1. This drawing cannot be accepted as acknowledging all of the utilities and it will be the responsibility of the user to contact the respective utility authorities for confirmation.
2. Only visible surface utilities were located. Surface paint marks indicating buried services shown were provided by owner.
3. A field location of underground plant by the pertinent utility authority is mandatory before any work involving breaking ground, probing, excavating etc.



ROAD ALLOWANCE BETWEEN CONCESSIONS 1 AND 2 (OTTAWA FRONT)

OCULVIE CONCESSIONS 1 AND 2 (OTTAWA FRONT)

ROAD ALLOWANCE BETWEEN CONCESSIONS 1 AND 2 (OTTAWA FRONT)

OCULVIE CONCESSIONS 1 AND 2 (OTTAWA FRONT)