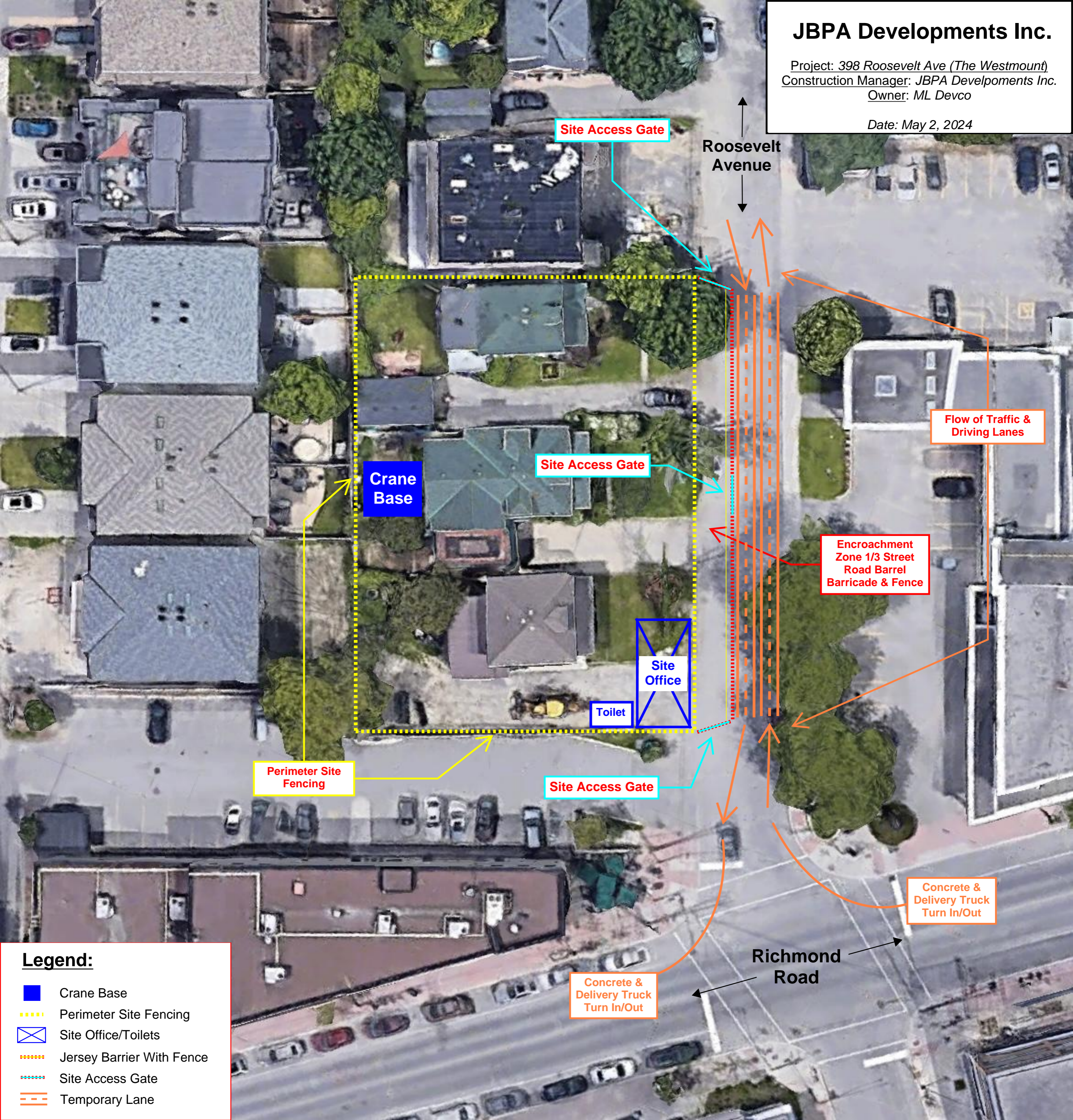


# JBPA Developments Inc.

Project: 398 Roosevelt Ave (The Westmount)  
Construction Manager: JBPA Developments Inc.  
Owner: ML Devco

Date: May 2, 2024



Site Access Gate

Roosevelt Avenue

Flow of Traffic & Driving Lanes

Crane Base

Site Access Gate

Encroachment Zone 1/3 Street Road Barrel Barricade & Fence

Site Office

Toilet

Perimeter Site Fencing

Site Access Gate

Concrete & Delivery Truck Turn In/Out

Richmond Road

Concrete & Delivery Truck Turn In/Out

## Legend:

- Crane Base
- Perimeter Site Fencing
- ▭ Site Office/Toilets
- Jersey Barrier With Fence
- Site Access Gate
- Temporary Lane