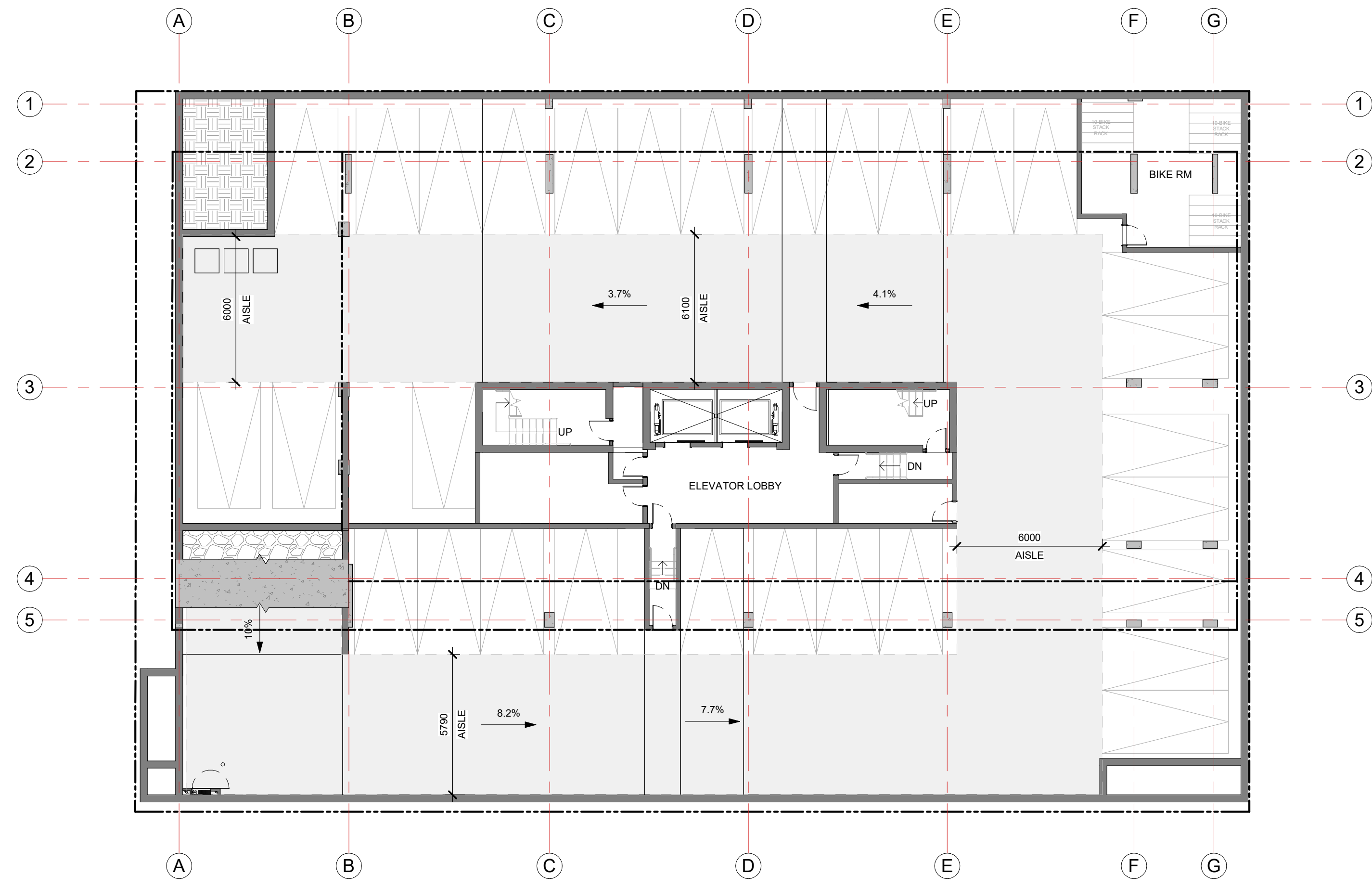
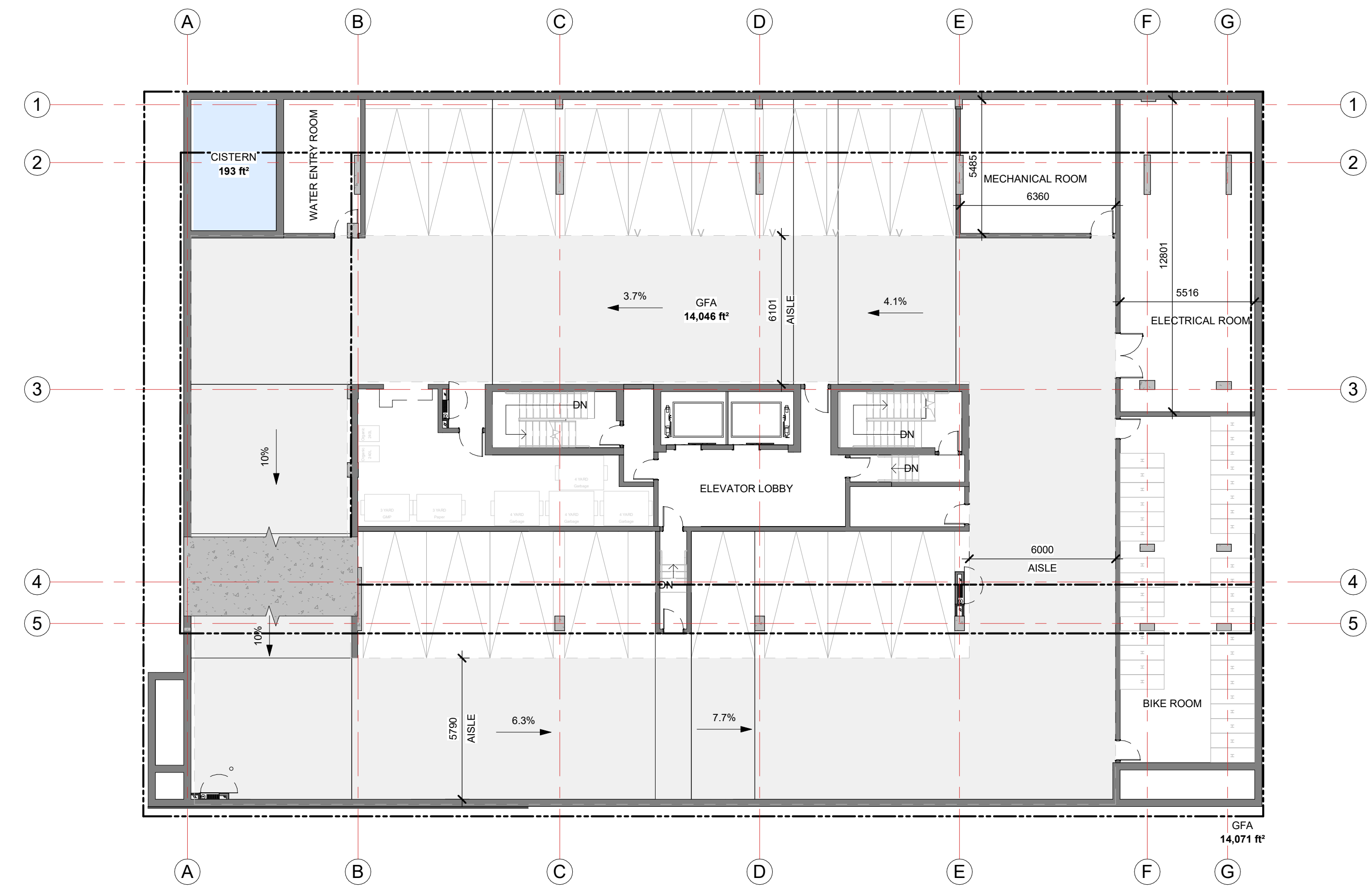


CAR PARKING			BIKE PARKING		
PARKING SIZE	VIS.	QTY	RACK TYPE	QTY	
2600 x 5200mm	No	42	10-BIKE STACK RACK	30	
2600 x 5200mm	Yes	5	INTERIOR HORIZONTAL	35	
			EXTERIOR LOOP	2	
			GRAND TOTAL	67	

IT IS THE RESPONSIBILITY OF THE APPROPRIATE CONTRACTOR TO CHECK AND VERIFY ALL DIMENSIONS ON SITE AND TO REPORT ALL ERRORS AND/OR OMISSIONS TO THE ARCHITECT.
 ALL CONTRACTORS MUST COMPLY WITH ALL PERTINENT CODES AND BY-LAWS.
 THIS DRAWING MAY NOT BE USED FOR CONSTRUCTION UNTIL SIGNED BY THE ARCHITECT.
 DO NOT SCALE DRAWINGS.
 COPYRIGHT RESERVED.



P2 PARKING PLAN



P1 PARKING PLAN


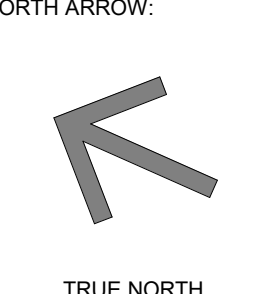


GROUND FLOOR PLAN



2ND FLOOR PLAN

NO.	DESCRIPTION	DATE
SPC 09	ISSUED FOR SPC PARKING REVISION	2024-08-16
SPC 08	ISSUED FOR SPC CITY COMMENTS	2024-07-24
SPC 07	PRE-CONSULT PHASE 3 COMMENT RESPONSE	2024-06-18
SPC 06	ISSUED FOR SPC RE-APPLICATION	2023-08-15
SPC 05	ISSUED FOR SPC RND 2 COMMENTS	2022-03-28
SPC 04	ISSUED FOR SPC RND 1 COMMENTS	2022-03-18
SPC 03	ISSUED FOR COORDINATION	2022-03-14
SPC 02	ISSUED FOR SPC APPLICATION	2021-12-13
SPC 01	ISSUED FOR SPC COORDINATION	2021-12-06
No.	DESCRIPTION	YYYY-MM-DD

ARCHITECT SEAL:  NORTH ARROW:  TRUE NORTH

CLIENT:  THE WESTMOUNT
ML Westboro Inc.

ARCHITECT:  rla/architecture
56 Beech Street, Ottawa, Ontario K1S 3J6
t.613.724.9932 f.613.724.1209 www.roderick-lalley.ca

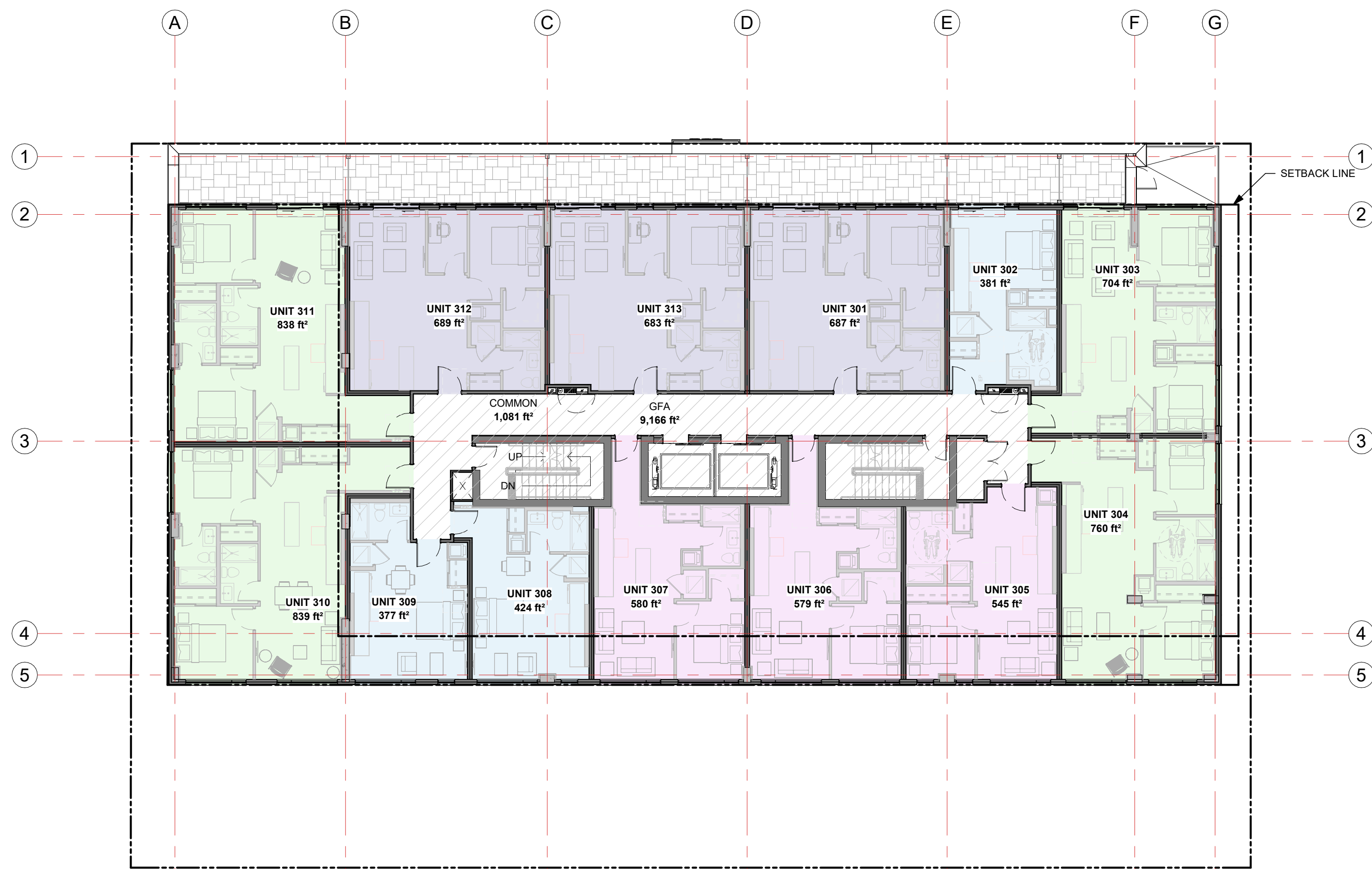
PROJECT TITLE:  THE WESTMOUNT
398 - 406 ROOSEVELT AVE.

SHEET TITLE: FLOOR PLANS

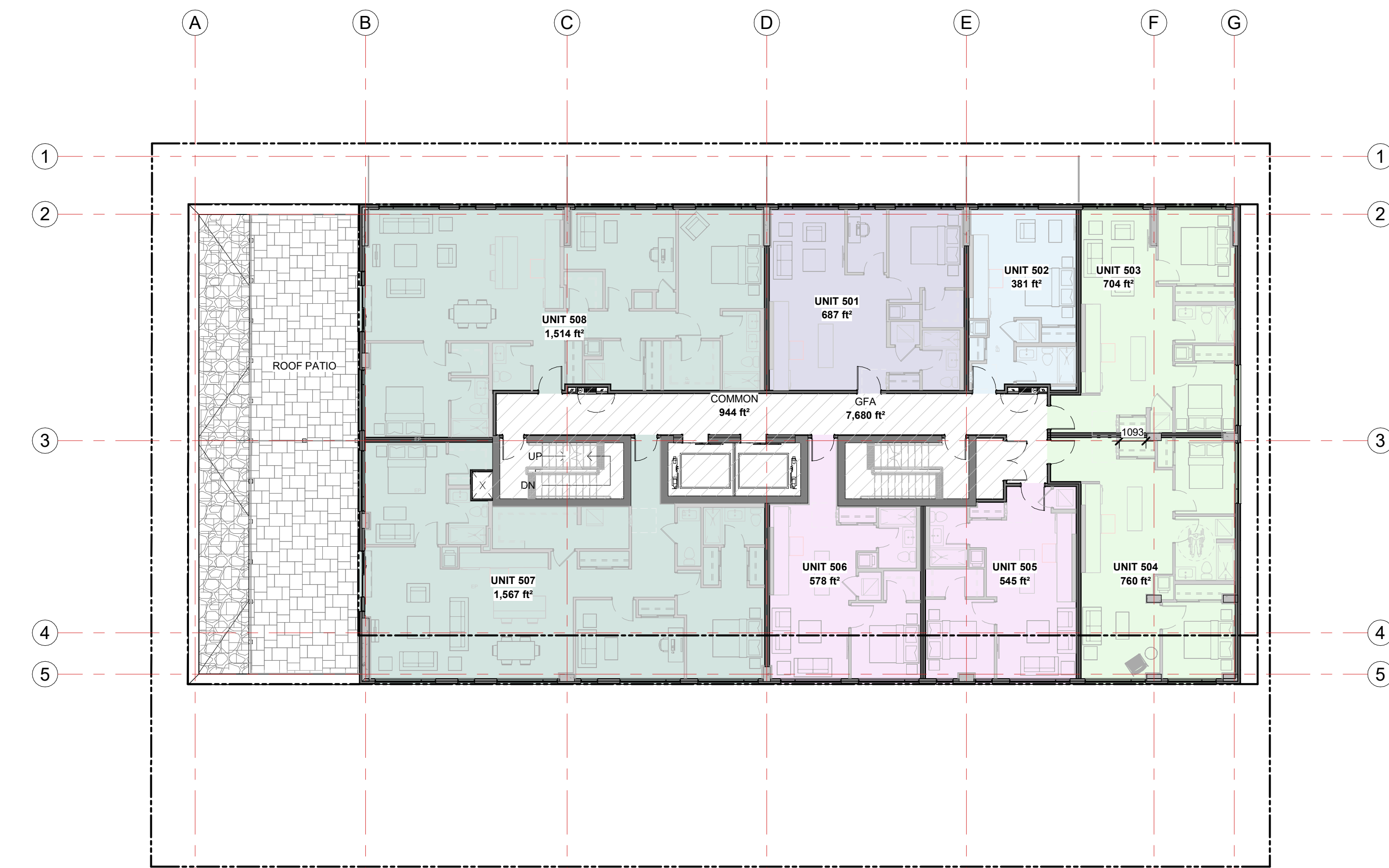
DRAWN: R.I.B. CHECKED: R.V.
SCALE: 1 : 150 SHEET No:
PROJECT No: 2122 **A-100**

PAPER SIZE: ISO Full Base B1 (707.00 x 1000.00mm) D04-241-2017

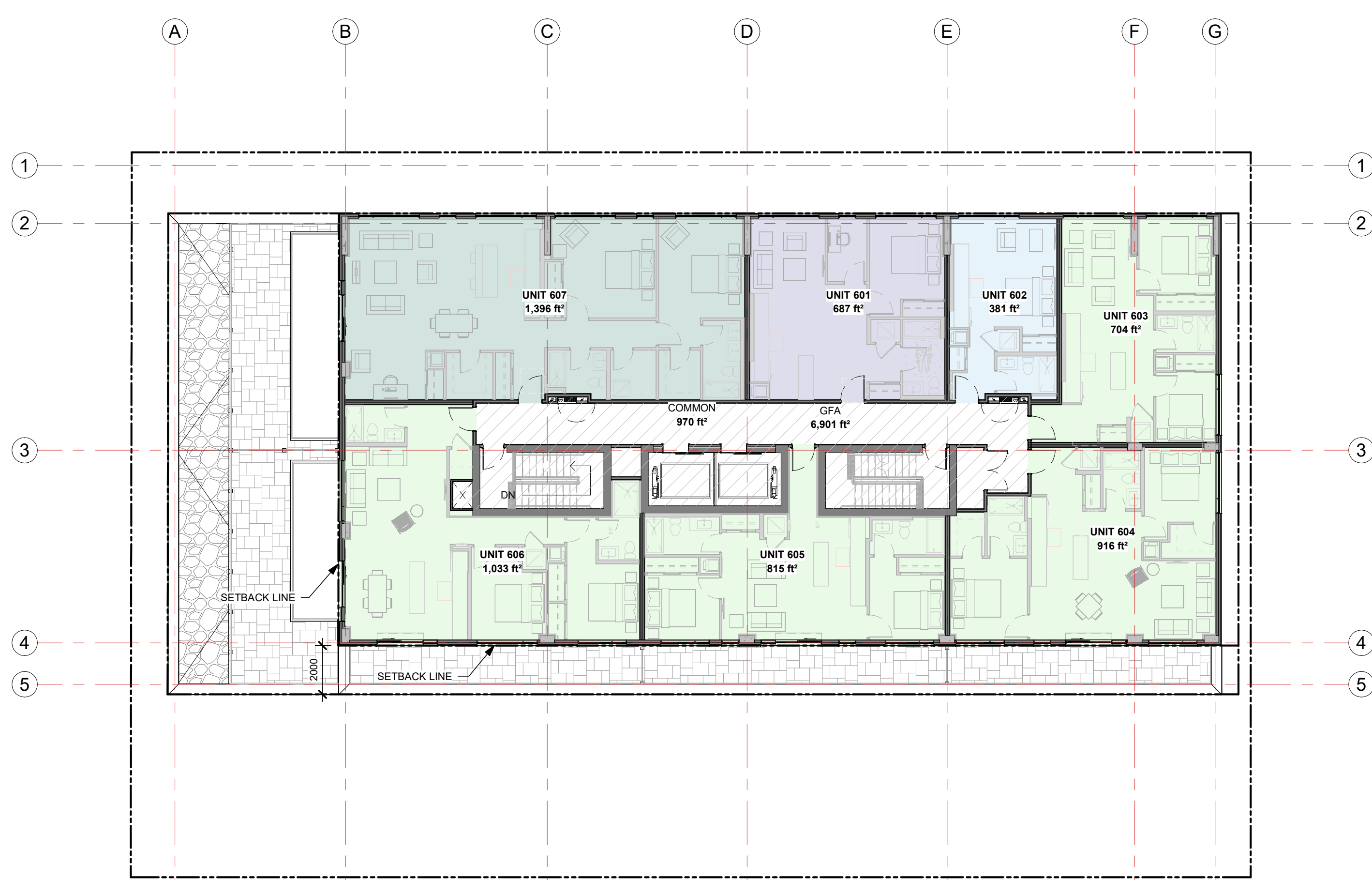
IT IS THE RESPONSIBILITY OF THE APPROPRIATE CONTRACTOR TO CHECK AND VERIFY ALL DIMENSIONS ON SITE AND TO REPORT ALL ERRORS AND/OR OMISSIONS TO THE ARCHITECT.
 ALL CONTRACTORS MUST COMPLY WITH ALL PERTINENT CODES AND BY-LAWS.
 THIS DRAWING MAY NOT BE USED FOR CONSTRUCTION UNTIL SIGNED BY THE ARCHITECT.
 DO NOT SCALE DRAWINGS.
 COPYRIGHT RESERVED.



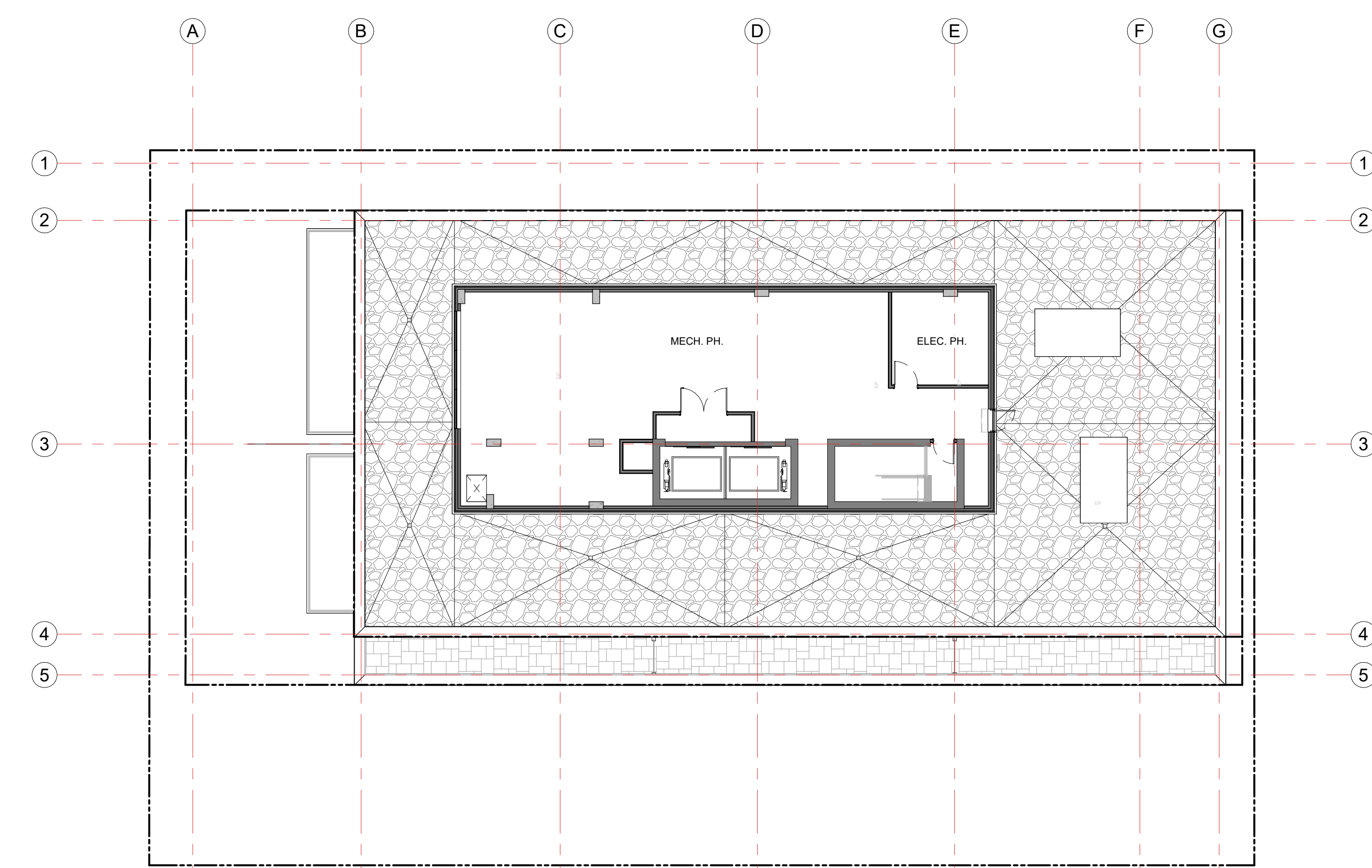
3RD - 4TH FLOOR PLAN



5TH FLOOR PLAN



6TH FLOOR PLAN



ROOF PLAN

No.	DESCRIPTION	DATE
SPC 09	ISSUED FOR SPC PARKING REVISION	2024-08-16
SPC 08	ISSUED FOR SPC CITY COMMENTS	2024-07-24
SPC 07	PRE-CONSULT PHASE 3 COMMENT RESPONSE	2024-06-18
SPC 06	ISSUED FOR SPC RE-APPLICATION	2023-08-15
SPC 05	ISSUED FOR SPC RND 2 COMMENTS	2022-03-28
SPC 04	ISSUED FOR SPC RND 1 COMMENTS	2022-03-18
SPC 03	ISSUED FOR COORDINATION	2022-03-14
SPC 02	ISSUED FOR SPC APPLICATION	2021-12-13
SPC 01	ISSUED FOR SPC COORDINATION	2021-12-06

ARCHITECT SEAL: NORTH ARROW:

CLIENT: THE WESTMOUNT
 ML Westboro Inc.

ARCHITECT: rla/architecture
 56 Beech Street, Ottawa, Ontario K1S 3J6
 1.613.724.9932 1.613.724.1209 www.rodericklacey.ca

PROJECT TITLE: THE WESTMOUNT
 398 - 406 ROOSEVELT AVE.

SHEET TITLE: FLOOR PLANS

DRAWN: R.I.B.	CHECKED: R.V.
SCALE: 1 : 150	SHEET No.:
PROJECT No: 2122	A-101

PAPER SIZE: ISO Full Base B1 (707.00 x 1000.00mm) D01-24-101



EAST ELEVATION - ROOSEVELT

SOUTH ELEVATION



WEST ELEVATION

NORTH ELEVATION

IT IS THE RESPONSIBILITY OF THE APPROPRIATE CONTRACTOR TO CHECK AND VERIFY ALL DIMENSIONS ON SITE AND TO REPORT ALL ERRORS AND/OR OMISSIONS TO THE ARCHITECT.
 ALL CONTRACTORS MUST COMPLY WITH ALL PERTINENT CODES AND BY-LAWS.
 THIS DRAWING MAY NOT BE USED FOR CONSTRUCTION UNTIL SIGNED BY THE ARCHITECT.
 DO NOT SCALE DRAWINGS.
 COPYRIGHT RESERVED.

No.	DESCRIPTION	DATE
SPC 09	ISSUED FOR SPC PARKING REVISION	2024-08-16
SPC 08	ISSUED FOR SPC CITY COMMENTS	2024-07-24
SPC 07	PRE-CONSULT PHASE 3 COMMENT RESPONSE	2024-06-18
SPC 06	ISSUED FOR SPC RE-APPLICATION	2023-08-15
SPC 05	ISSUED FOR SPC RND 2 COMMENTS	2022-03-28
SPC 04	ISSUED FOR SPC RND 1 COMMENTS	2022-03-18
SPC 03	ISSUED FOR COORDINATION	2022-03-14
SPC 02	ISSUED FOR SPC APPLICATION	2021-12-13
SPC 01	ISSUED FOR SPC COORDINATION	2021-12-06

REVISIONS:

ARCHITECT SEAL:

NORTH ARROW:

CLIENT:

THE WESTMOUNT
 ML Westboro Inc.

ARCHITECT:

rla/architecture
 56 Beech Street, Ottawa, Ontario K1S 3J6
 t.613.724.9932 f.613.724.1209 www.rodericklacey.ca

PROJECT TITLE:

THE WESTMOUNT
 398 - 406 ROOSEVELT AVE.

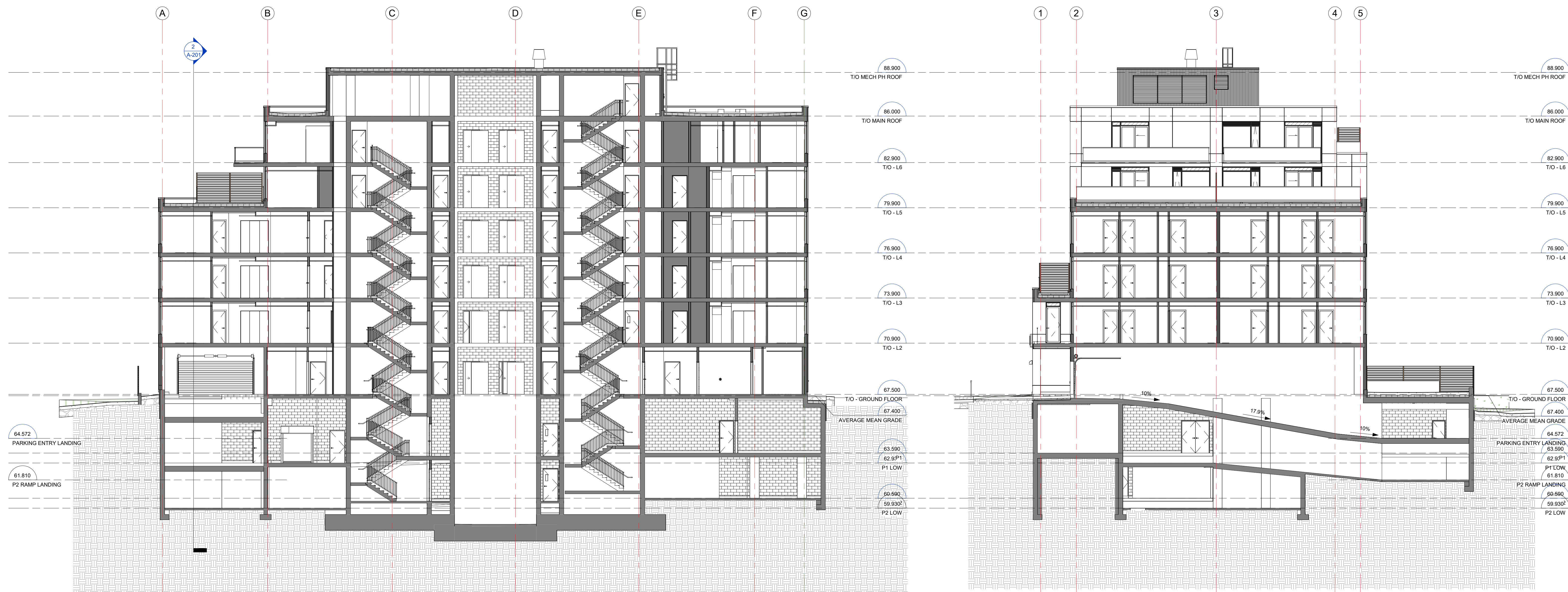
SHEET TITLE:

BUILDING ELEVATIONS

DRAWN: R.I.B.	CHECKED: R.V.
SCALE: 1 : 100	SHEET No.:
PROJECT No.:	A-200

PAPER SIZE: ISO Full Base B1 (707.60 x 1000.00mm)

IT IS THE RESPONSIBILITY OF THE APPROPRIATE CONTRACTOR TO CHECK AND VERIFY ALL DIMENSIONS ON SITE AND TO REPORT ALL ERRORS AND/OR OMISSIONS TO THE ARCHITECT.
 ALL CONTRACTORS MUST COMPLY WITH ALL PERTINENT CODES AND BY-LAWS.
 THIS DRAWING MAY NOT BE USED FOR CONSTRUCTION UNTIL SIGNED BY THE ARCHITECT.
 DO NOT SCALE DRAWINGS.
 COPYRIGHT RESERVED.



BUILDING SECTION N-S

GARAGE RAMP SECTIONS

No.	DESCRIPTION	DATE
SPC 09	ISSUED FOR SPC PARKING REVISION	2024-08-16
SPC 08	ISSUED FOR SPC CITY COMMENTS	2024-07-24
SPC 07	PRE-CONSULT PHASE 3 COMMENT RESPONSE	2024-06-18
SPC 06	ISSUED FOR SPC RE-APPLICATION	2023-08-15
SPC 05	ISSUED FOR SPC RND 2 COMMENTS	2022-03-28
SPC 04	ISSUED FOR SPC RND 1 COMMENTS	2022-03-18
SPC 03	ISSUED FOR COORDINATION	2022-03-14
SPC 02	ISSUED FOR SPC APPLICATION	2021-12-13
SPC 01	ISSUED FOR SPC COORDINATION	2021-12-06

REVISIONS:

ARCHITECT SEAL:	NORTH ARROW:

CLIENT:

THE WESTMOUNT
ML Westboro Inc.

ARCHITECT:

rla/architecture
56 Beech Street, Ottawa, Ontario K1S 3J6
t.613.724.9932 f.613.724.1209 www.roderickclayey.ca

PROJECT TITLE:

THE WESTMOUNT
398 - 406 ROOSEVELT AVE.

SHEET TITLE:

BUILDING SECTIONS

DRAWN: R.I.B.	CHECKED: R.V.
SCALE: 1 : 125	SHEET No.:
PROJECT No.:	A-201


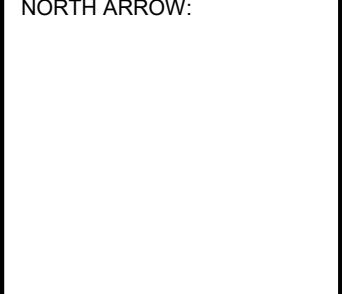
PAPER SIZE: ISO Full (841x1189) (mm)

IT IS THE RESPONSIBILITY OF THE APPROPRIATE CONTRACTOR TO CHECK AND VERIFY ALL DIMENSIONS ON SITE AND TO REPORT ALL ERRORS AND/OR OMISSIONS TO THE ARCHITECT.
 ALL CONTRACTORS MUST COMPLY WITH ALL PERTINENT CODES AND BY-LAWS.
 THIS DRAWING MAY NOT BE USED FOR CONSTRUCTION UNTIL SIGNED BY THE ARCHITECT.
 DO NOT SCALE DRAWINGS.
 COPYRIGHT RESERVED.



SPC 09	ISSUED FOR SPC PARKING REVISION	2024-08-16
SPC 08	ISSUED FOR SPC CITY COMMENTS	2024-07-24
SPC 07	PRE-CONSULT PHASE 3 COMMENT RESPONSE	2024-06-18
SPC 06	ISSUED FOR SPC RE-APPLICATION	2023-08-15
SPC 05	ISSUED FOR SPC RND 2 COMMENTS	2022-03-28
SPC 04	ISSUED FOR SPC RND 1 COMMENTS	2022-03-18
SPC 03	ISSUED FOR COORDINATION	2022-03-14
SPC 02	ISSUED FOR SPC APPLICATION	2021-12-13
SPC 01	ISSUED FOR SPC COORDINATION	2021-12-06
No.	DESCRIPTION	YYYY-MM-DD

REVISIONS:

ARCHITECT SEAL:  NORTH ARROW: 

CLIENT:

 **THE WESTMOUNT**
 M. Westboro Inc.

ARCHITECT:


 56 Beech Street, Ottawa, Ontario K1S 3J6
 t.613.724.9932 f.613.724.1209 www.rodericklahey.ca

PROJECT TITLE:


THE WESTMOUNT
 398 - 406 ROOSEVELT AVE.

SHEET TITLE:

3D PERSPECTIVES

DRAWN: R.I.B.	CHECKED: R.V.
SCALE:	SHEET No:
PROJECT No: 2122	A-301

PAPER SIZE: ISO Full Base B1 (707.60 x 1000.00mm) D:\24\2122\2122