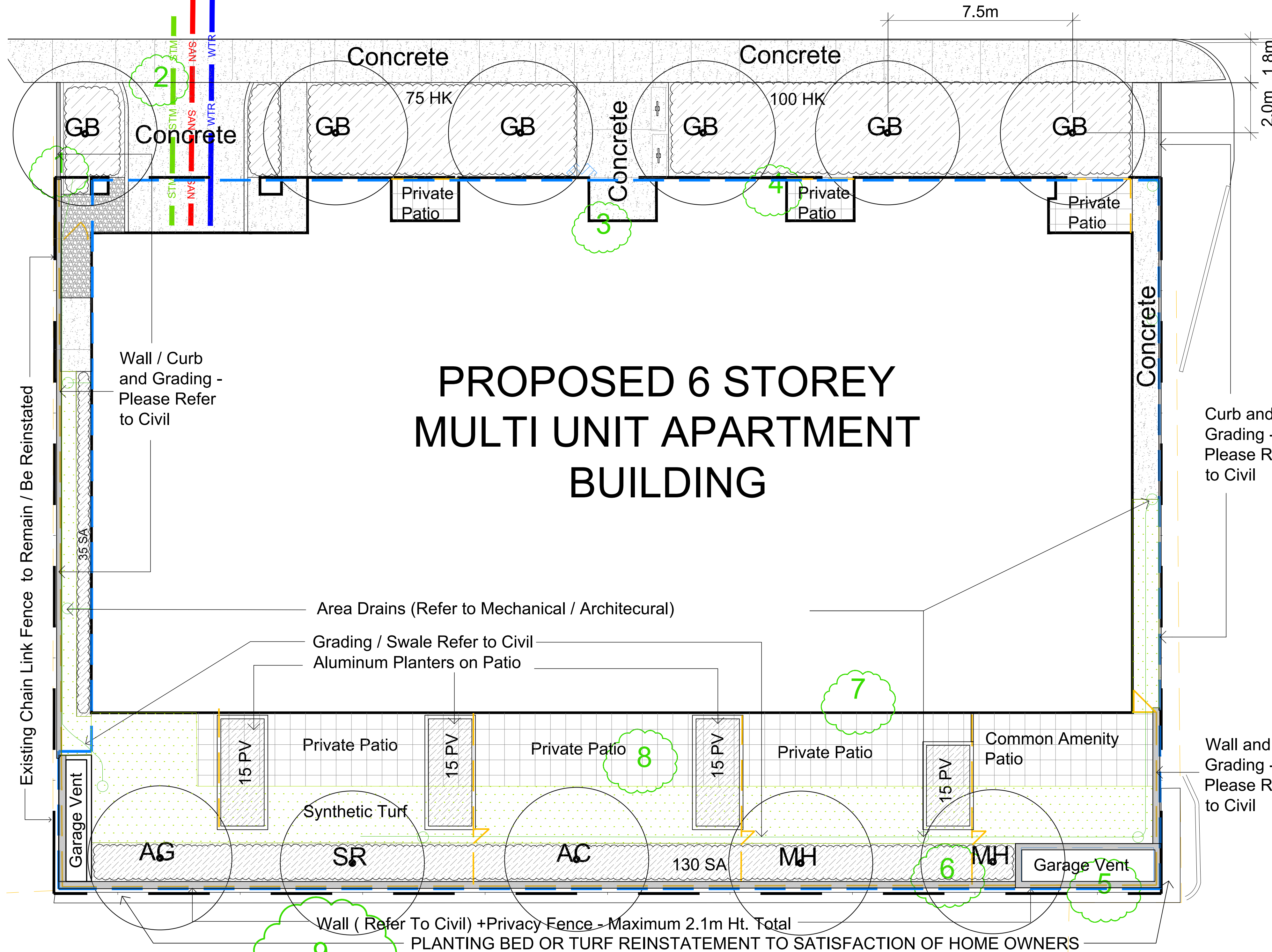


ROOSEVELT AVENUE

CONCRETE AND PLANTING DETAILS WITHIN THE CITY ROW TO MEET OR EXCEED CITY STANDARD DETAILS SC2 Monolithic Curb and Sidewalk, L3 Planting Pit, L4 Shrub Bed, L5 Continuous Planting Bed AS REQUESTED BY THE CITY OF OTTAWA



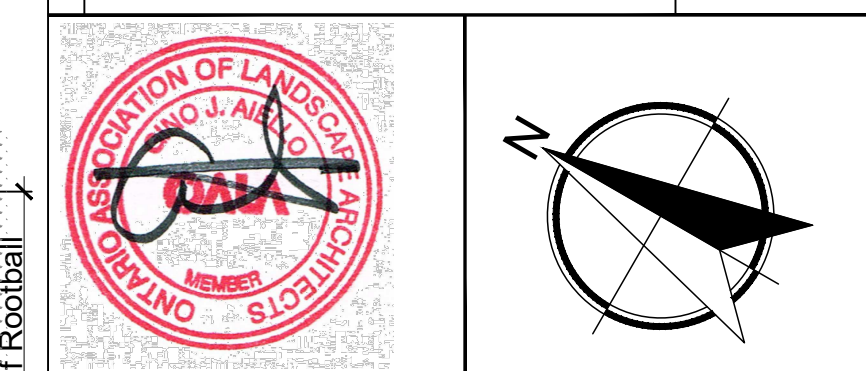
Drawing Remains the Property of/Copyright Reserved by GJA INC. Do Not Use or Reproduce Without Approval of GJA INC.
 NOT To Be Used For Construction Unless indicated by Revision: "FOR LANDSCAPE CONSTRUCTION"
 Contractor is Responsible for Verification of Site Locations of all Utilities. Report any Discrepancies Between Site and Drawing Immediately to GJA INC. Do NOT Proceed Until Clarified.

PLANTING MIX TO BE APPROVED BY LANDSCAPE ARCHITECT | PLANT MATERIAL TO MEET CNLA STANDARDS/BE APPROVED BY LANDSCAPE ARCHITECT PRIOR TO PLANTING | ALL MATERIALS & WORK TO BE MAINTAINED UNTIL FINAL ACCEPTANCE & INCLUDE 1 YEAR WARRANTY FROM DATE OF FINAL ACCEPTANCE | PROVIDE WATERING OF ALL PLANT MATERIAL AS REQUIRED FOR PROPER ESTABLISHMENT UNTIL END OF WARRANTY PERIOD | REFER TO CIVIL ENGINEER'S DRAWING FOR ELEVATIONS / GRADING |
 The Landscape Plan is to be read in conjunction with the grading, servicing, site and survey plan | Bare root material to be planted in season only | All plant material locations to be staked on site by the landscape contractor and checked by the landscape architect prior to planting | All trees to be preserved on or directly adjacent to the site will be protected | Plant material are to be installed a minimum of: 3.0m away from any part of any hydro transformer, 3.0m corridor between a fire hydrant and the curb, a 2.5m radius beside or behind a fire hydrant, 2.0m from any servicing/utility line or structure |

- ### LANDSCAPE PLAN LEGEND
- Proposed Pedestrian Pavement
 - Proposed Concrete Pavement
 - Proposed Deciduous Tree
 - Proposed Planting Bed
 - Proposed Riverwash Stone On Filter Cloth
 - Proposed Custom Aluminum Privacy Screen
- ### BELOW GRADE SERVICES REFER TO CIVIL /CUP
- U/G Water Service
 - U/G Storm Service
 - U/G Sanitary Service
 - FD Siamese Connection
- REFER TO TCR BY IFS

Existing Tree - Refer TO TCR by IFS for Details/Actions

10	PHASE 3 PRE CONSULT RESPONSE	2024.07.29
9	PHASE 3 PRE CONSULT RESPONSE	2024.06.18
8	REVISED SITE/GROUND FLOOR PLAN	2024.05.01
7	CITY ROW DETAILS ADDED	JUNE 29 2022
6	FOR BUILDING PERMIT	JUNE 10 2022
5	SITE PLAN CONTROL SUBMISSION 4	MAY 12 2022
4	FOR TENDER REVIEW	APRIL 27 2022
3	SITE PLAN CONTROL SUBMISSION 3	MARCH 31 2022
2	SITE PLAN CONTROL SUBMISSION 2	JANUARY 17 2022
1	SITE PLAN CONTROL SUBMISSION 1	DECEMBER 10 2021
0	REVIEW/COORDINATION	NOVEMBER 2021

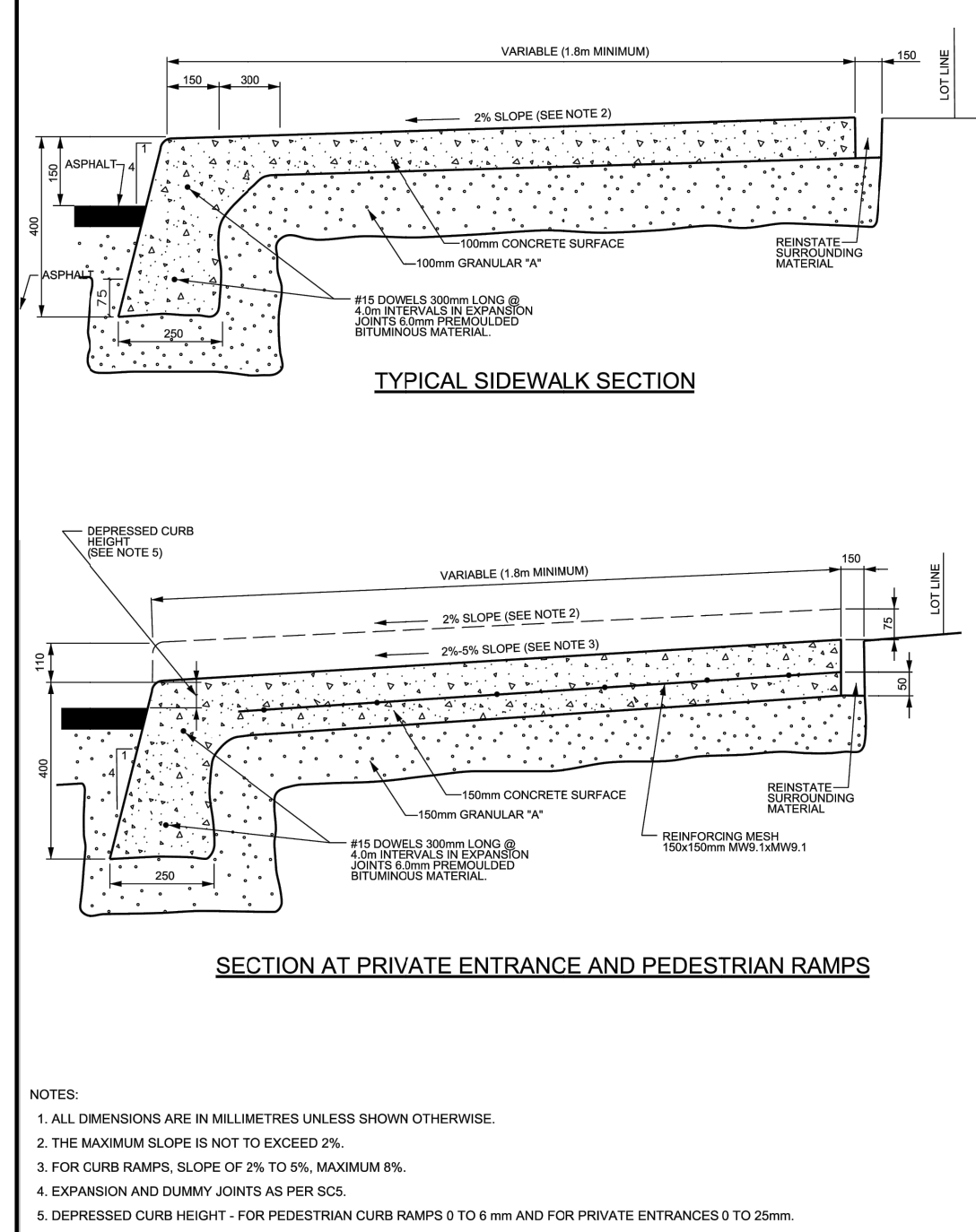


Property Owner **ML Westboro Inc.**
 C/O ML DEVCO INC.
 651 Churchhill Avenue North Ottawa K1Z 5G2 Tel: 613-686-6319

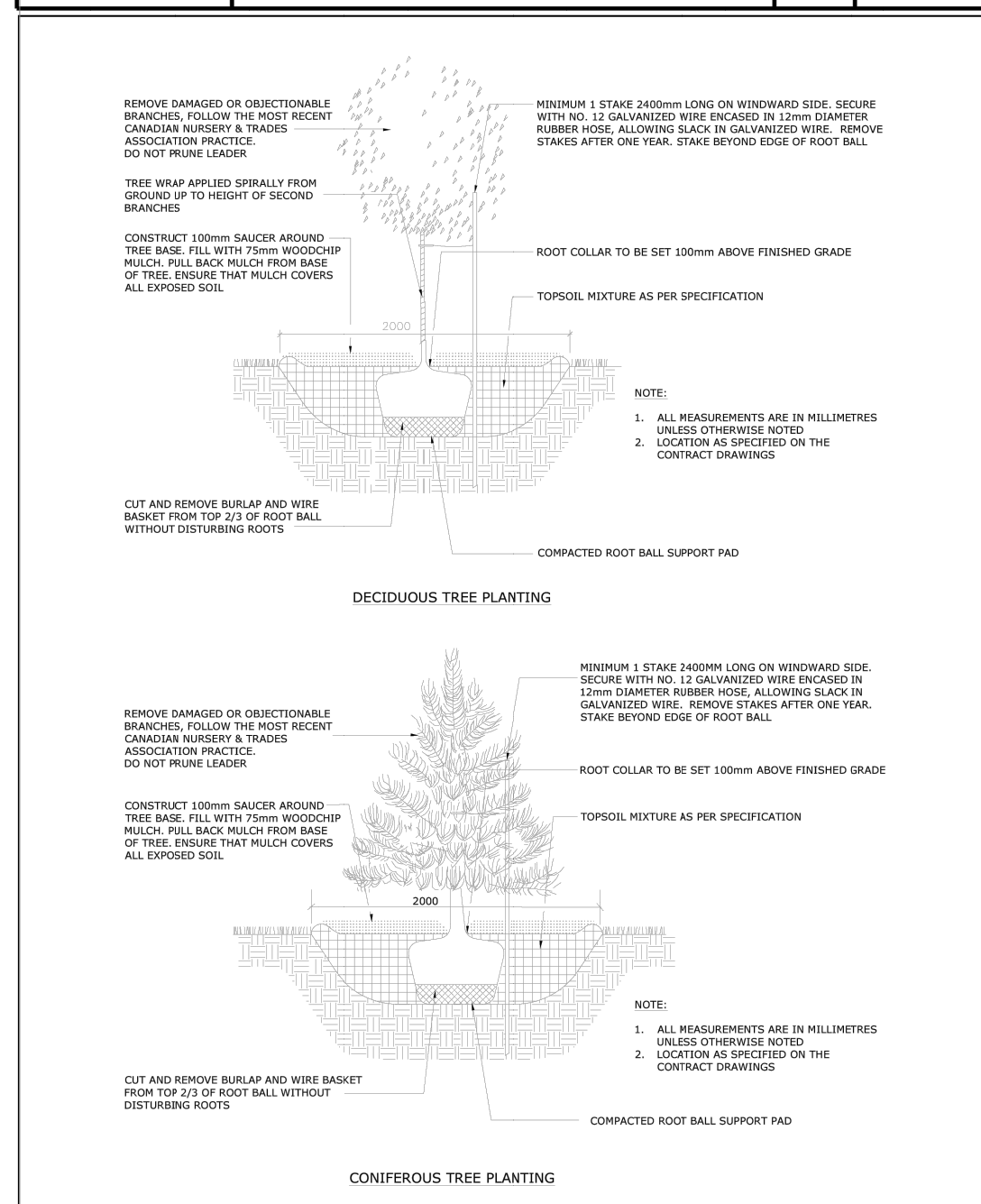
GJA INC.
 GJALA.COM | 613.286.5130 | GJNO@GJALA.COM
 115 DORRIS ROAD UNIT # 8 | OTTAWA, ONTARIO | K1T 0G2

MULTI UNIT RESIDENTIAL CONDOMINIUM
 398 - 406 ROOSEVELT AVENUE

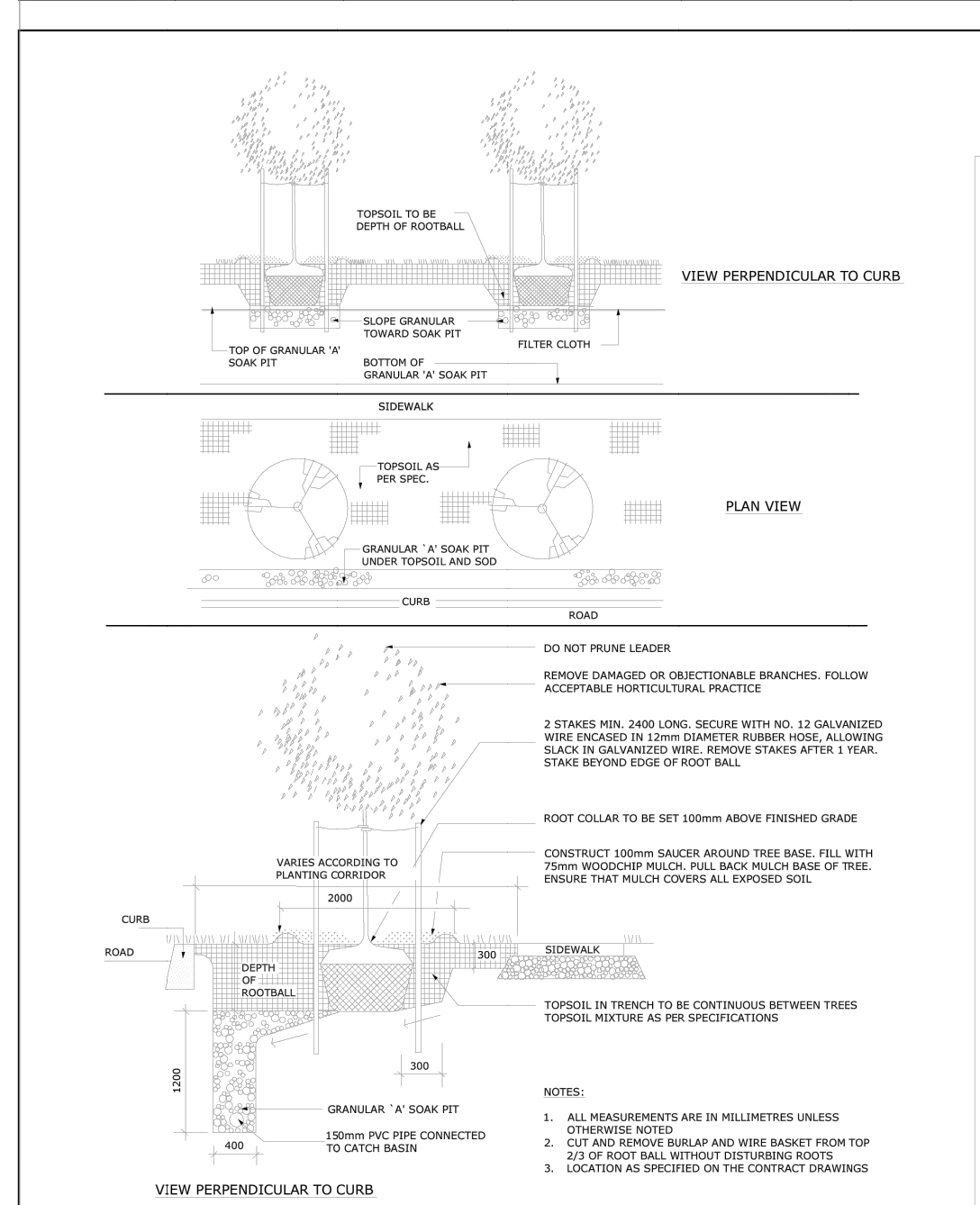
Landscape Plan
 Scale: 1:100 Sheet Number **L1**
 City of Ottawa Dwg - 18647



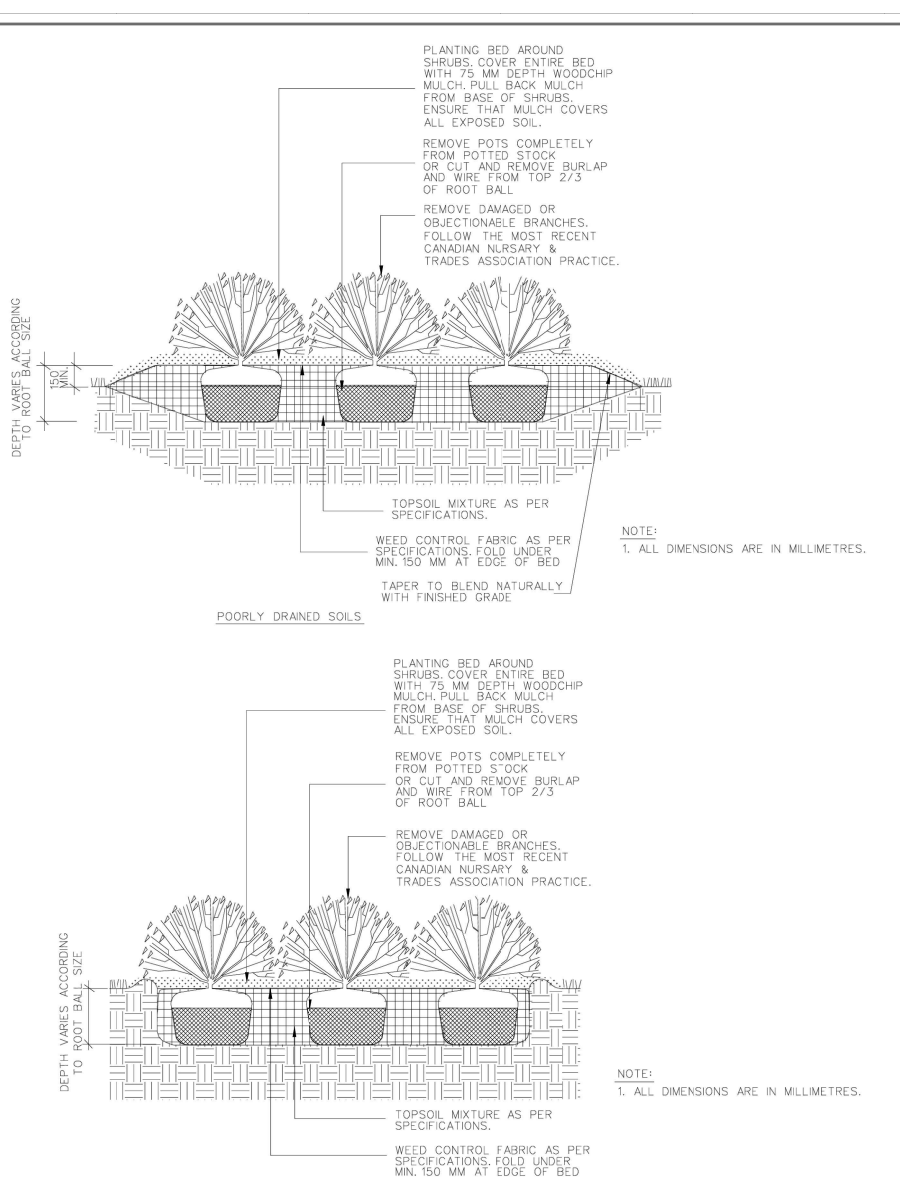
MONOLITHIC CONCRETE CURB AND SIDEWALK
 DATE: MAY 2001
 REV: MARCH 2016
 DWG. No.: SC2



DATE: MAY 2001
 REV: JAN 2017
 DWG No: L3



DATE: MAY 2001
 REV: JAN 2015
 DWG No: L5



DATE: MAY 2001
 REV: MAY 2001
 DWG No: L4

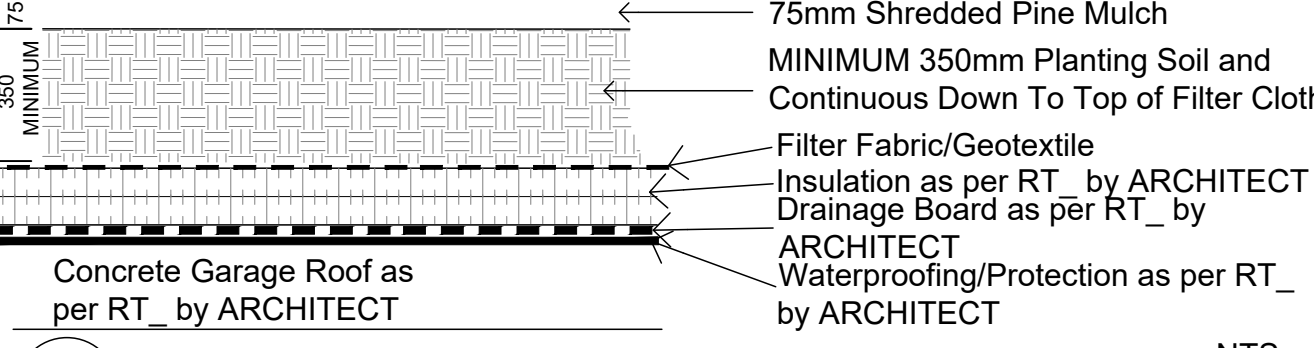
Code	Qty.	Botanical Name	Common Name	Size	Condition
AC	1	Amelanchier canadensis	Tree Serviceberry	50mm cal	B + B specimen
AG	1	Aesculus glabra	Ohio Buckeye	50mm cal	B + B specimen
GB	6	Ginkgo biloba	Maidenhair Tree	70mm cal	B + B specimen
MH	2	Malus 'Harvest Gold'	Harvest Gold Crabapple	60mm cal	B + B specimen
SR	1	Syringa reticulata	Japanese Tree Lilac	60mm cal	B + B specimen

Code	Qty.	Botanical Name	Common Name	Size	Condition
HK	175	Hypericum kalmianum	St. John's Wort	40cm Ht.	Pot
SA	165	Spiraea alba	Meadowsweet	60cm Ht.	Pot
PV	75	Panicum virgatum	Switch Grass	9cm Pot	

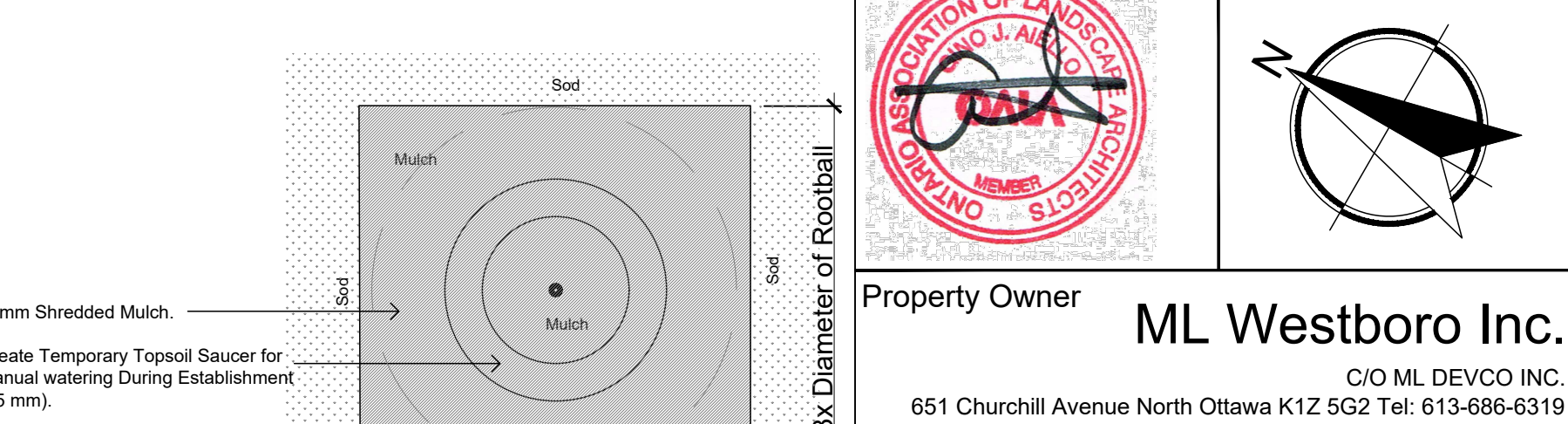
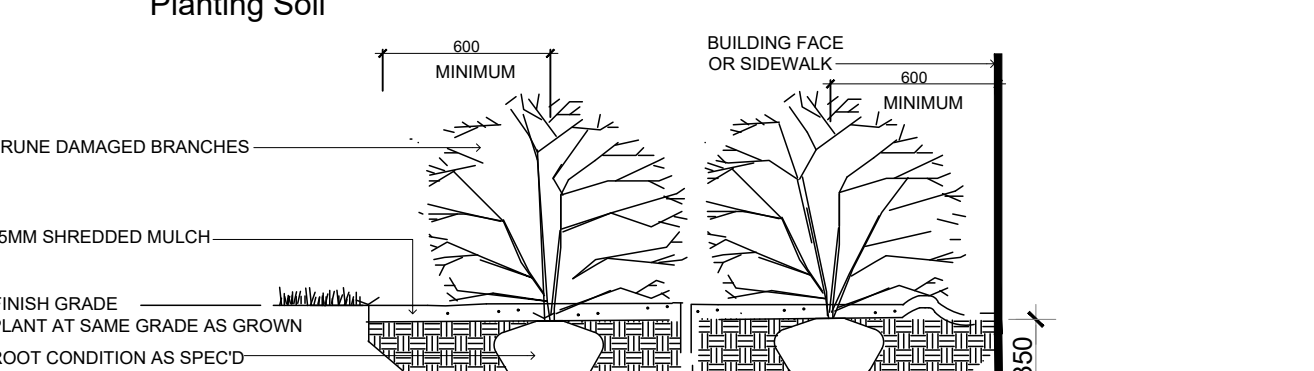
Code	Qty.	Botanical Name	Common Name	Condition
25		Hypericum kalmianum	St. John's Wort	Pot
15		Spiraea alba	Meadowsweet	Pot
50		Calamagrostis acutiflula 'Overdam'	Feather Reed Grass	9cm Pot
250		Geranium macrorrhizum	Bigroot Geranium	9cm Pot
250		Geranium psilostemon 'Gerwat'	Rozanne Geranium	9cm Pot
50		Parthenocissus tricuspidata	Boston Ivy	9cm Pot
50		Panicum virgatum	Switch Grass	9cm Pot

TO BE DISTRIBUTED ON SITE BY GJA INC.

Ensure Filter Fabric is in Place over Insulation, with 500mm Overlap at Seams, and Continuous up and over any Upstands, Drains etc. Notify GJA INC. When Fabric Placement is Ready For Inspection Prior To ANY Soil Placement.



PLANTING ON INSULATED GARAGE ROOF
 Drainage Board Must Be Provide/Installed Above Waterproofing & Below Insulation If/Where Soil Depths Exceed 350mm - use Commercial Screened Topsoil BELOW Planting Soil



Remove Trunk Wrap, Ribbons, Tags. Do Not Damage a Cut Leader. Prune Dead, Broken Branches Only. Top of Rootball to be 50mm Above Finished Grade. 75mm Shredded Mulch. Create Topsoil Saver (75 mm). Approved Planting Soil. Top Half of Pit Only. Backfill Bottom Half of Pit with Native Soil Only. Cut & Remove Top 1/2 of Burlap Rope and Wire. Compacted / Undisturbed Subgrade.

