

**TOPOGRAPHICAL PLAN OF SURVEY OF PART OF LOT 11 CONCESSION 3 (RIDEAU FRONT) Geographic Township of Nepean CITY OF OTTAWA**  
 Surveyed by Annis, O'Sullivan, Vollebek Ltd.

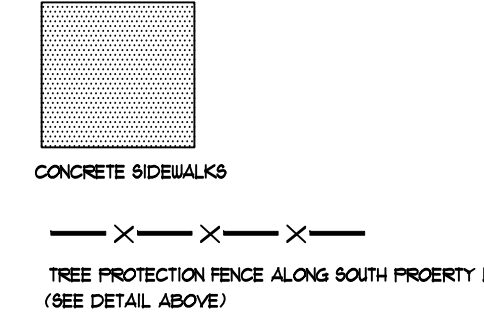
FLAGSTAFF DRIVE

**TYPICAL PLANTING BLOCK - DECIDUOUS (DEC.)**

- LEGEND**
- SERVICEBERRY 2 m O.C.
  - BLUE BEECH
  - YELLOW BIRCH
  - RED MAPLE
  - BURR OAK
  - ⊕ SNOUBERY 1 m O.C.

**TYPICAL PLANTING BLOCK - CONIFEROUS (CON.)**

- LEGEND**
- △ TAMARACK
  - ⊗ EASTERN WHITE CEDAR



**GENERAL NOTES:**

- LANDSCAPE BUFFER TO BE MULCHED WITH APPROVED MATERIAL.
- SUBMIT SAMPLE IN ADVANCE FOR APPROVAL.

**TREE PROTECTION SPECIFICATION**

THIS PROTECTION SPECIFICATION IS TO BE USED IN CONJUNCTION WITH THE CRITICAL ROOT ZONE (CRZ) MAP AND THE TREE PROTECTION HOARDING SPECIFICATIONS. IT IS THE RESPONSIBILITY OF THE CONTRACTOR TO ENSURE THAT ALL REQUIREMENTS ARE MET.

**THE PROTECTION REQUIREMENTS:**

1. THE PROTECTION FENCING MUST BE INSTALLED TO PROTECT THE CRITICAL ROOT ZONE (CRZ) OF ALL TREES TO BE PRESERVED.
2. THE PROTECTION FENCING MUST BE APPROVED BY THE CITY OF OTTAWA.
3. THE PROTECTION FENCING MUST BE APPROVED BY THE CITY OF OTTAWA.
4. THE PROTECTION FENCING MUST BE APPROVED BY THE CITY OF OTTAWA.
5. THE PROTECTION FENCING MUST BE APPROVED BY THE CITY OF OTTAWA.
6. THE PROTECTION FENCING MUST BE APPROVED BY THE CITY OF OTTAWA.
7. THE PROTECTION FENCING MUST BE APPROVED BY THE CITY OF OTTAWA.
8. THE PROTECTION FENCING MUST BE APPROVED BY THE CITY OF OTTAWA.
9. THE PROTECTION FENCING MUST BE APPROVED BY THE CITY OF OTTAWA.
10. THE PROTECTION FENCING MUST BE APPROVED BY THE CITY OF OTTAWA.

**THE PROTECTION FENCING MUST BE APPROVED BY THE CITY OF OTTAWA.**

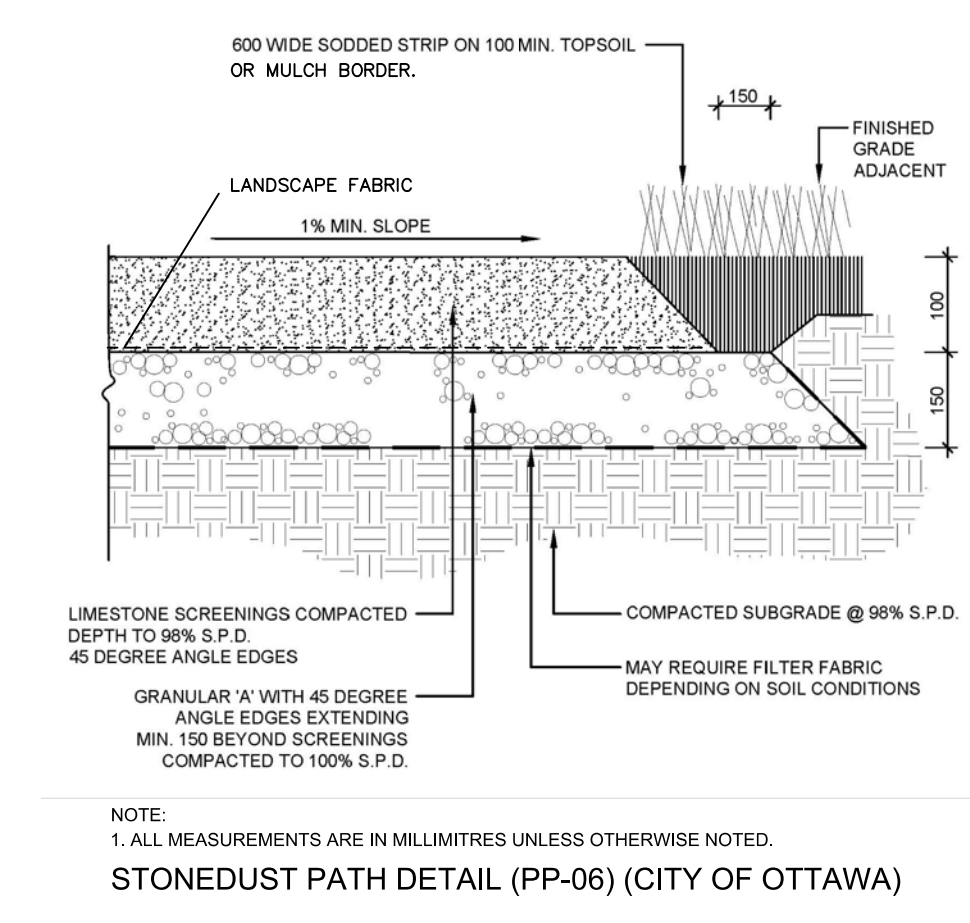
ACCESSIBLE FORMATS AND COMMUNICATION SUPPORTS ARE AVAILABLE UPON REQUEST.

**Ottawa**

**TREE PROTECTION SPECIFICATION**

TO BE USED IN CONJUNCTION WITH THE CRITICAL ROOT ZONE (CRZ) MAP AND THE TREE PROTECTION HOARDING SPECIFICATIONS. IT IS THE RESPONSIBILITY OF THE CONTRACTOR TO ENSURE THAT ALL REQUIREMENTS ARE MET.

SCALE: NTS  
 DATE: MARCH 2021  
 DRAWING NO: 1 of 1



**PROTECTION OF EXISTING TREES & VEGETATION AREAS**

1. Trees, individual or groups, and areas of existing vegetation have been identified on this plan. Report any discrepancies to the landscape consultant immediately and prior to commencing work.

2. Prior to commencement of construction on site, erect temporary barrier fences around protected trees and areas. At minimum, fences to be located beyond outer edge of tree canopies, i.e. drip line plus 1 metre. Any variation shall be subject to approval.

3. Temporary barrier shall be preservation hoarding as per City of Ottawa detail.

4. The existing grade within the protected root zone area shall remain undisturbed during construction, and storage of materials or equipment shall be prohibited. No soil or debris shall be placed over root systems or feeder roots. Ensure positive drainage. Grades within root zone not to alter more than 50mm from existing. Fill deeper depressions with sandy topsoil. Refer landscape plan for sodding and planting instructions. If grades around trees to be protected are deemed to require substantial remediation, precautions such as dry welling, retaining walls and root feeding shall be undertaken as directed.

5. After construction of building footings and when trees are in full and mature leaf, assess trees and prune out dead wood. Where necessary, trees shall be pruned and shaped to restore overall balance between roots and top growth, and to restore appearance of the tree. A meeting with the landscape consultant is required prior to trimming operations. Trim limbs away from building and utility lines, and prune lower branches on selected trees to clear minimum 1800mm above grade for sight lines, near paths and path junctions. Dispose of debris as part of this contract. Woody material free of disease and insect infestation may be chipped and stored on site for use as mulch on paths and shrub beds.

6. At time of site grading, use small machine to smooth surface at base of trees and over root zone to facilitate lawn cutting in areas designated as lawn. Minimized disturbance to roots and in particular fibrous feeder roots. Ensure positive drainage. Grades within root zone not to alter more than 50mm from existing. Fill deeper depressions with sandy topsoil. Refer landscape plan for sodding and planting instructions. If grades around trees to be protected are deemed to require substantial remediation, precautions such as dry welling, retaining walls and root feeding shall be undertaken as directed.

7. Leave site in tidy condition.

8. Protected trees shall be reassessed after construction by a tree management professional. All trees that have died in situ and damaged beyond repair shall be removed and replaced by the General Contractor and/or Owner.

**GENERAL LANDSCAPING NOTES**

Verify servicing and locate utilities prior to excavation. Confirm site readiness and review landscape and architecture consultant of installation schedule. Verify listed quantities with work. Report discrepancies immediately. Ensure soil mixture including topsoil is suitable for work. Mark out locations of trees for approval prior to planting. Set out shrubs and ground covers for approval prior to planting. All tree shrubs, planters and shrub beds to be mulched. Any rejected material shall be replaced immediately. Ensure adequate watering of plantings to first winter dormancy. Temporary staking to be removed by landscape contractor following acceptance at one year warranty review. Protect existing trees and natural areas to remain. Where there is a discrepancy between drawings and Municipal specifications, the Municipal specifications shall prevail.

**TREE PLANTING**

Select specimen to suit location, setting plant in same level and orientation it grew, i.e. north side of trunk facing north. Set nursery grown plants in planting pit and make minor adjustment to place plant for best appearance from main views. Set tree plumb in pit and coordinate installation to remove rope and wire basket as pit is backfilled, clipping the basket away in pieces without disturbing the tree. Remove at least half burlap covering and fold down remaining burlap to bury in pit. Ensure soil of rootball is moistened to keep rootball from breaking apart during planting. Stake tree to hold in place, refer above, scarify pit bottom and sides. Backfill pit with planting mixture in beds and for individual pits, a mixture of 2 parts soil with 1 part soil specified in schedule. Tamp in 150mm layers. Trees planted in exposed locations or on slopes may require three stakes. 100mm layer approved mulch such as shredded leaf litter or screened composted manure or dark coloured shredded wood. Burlap wrapping should be removed for inspection of trunk, and replaced. Install for length of trunk to first main branch. In addition, for trees not planted in beds, provide an approved plastic mowing guard, such as a 200mm length big 'o' boot. For trees which may be susceptible to rodent damage, an approved plastic guard shall be installed instead, refer to plant list. Create saucer at base of tree with root edge at perimeter of saucer. Neatly tool edge of mulched saucer to create 1m diameter circles at base of tree. Trim only injured plant parts; retaining natural shape. Ensure binding in branches is removed or poorly structured plants are unacceptable. Bark damage including loose bark, unhealed wounds and splits in trunk bark is cause for rejection of tree.

**SODDING AND SEEDING**

After rough grading is approved and topsoil has been spread and finish graded to depth specified in contract or, a minimum 100mm compacted depth (which ever is more), inspect site readiness for sodding. Damage to soil surface to minimize dust, respect governing regulations with respect to pollution control. Apply any required fertilizer as determined by soil testing and rake into top 100mm topsoil. Roll to consolidate topsoil, leaving smooth and firm against deep footprints. Just prior to sodding or seeding, machine rake soil to smooth surface and eliminate minor irregularities.

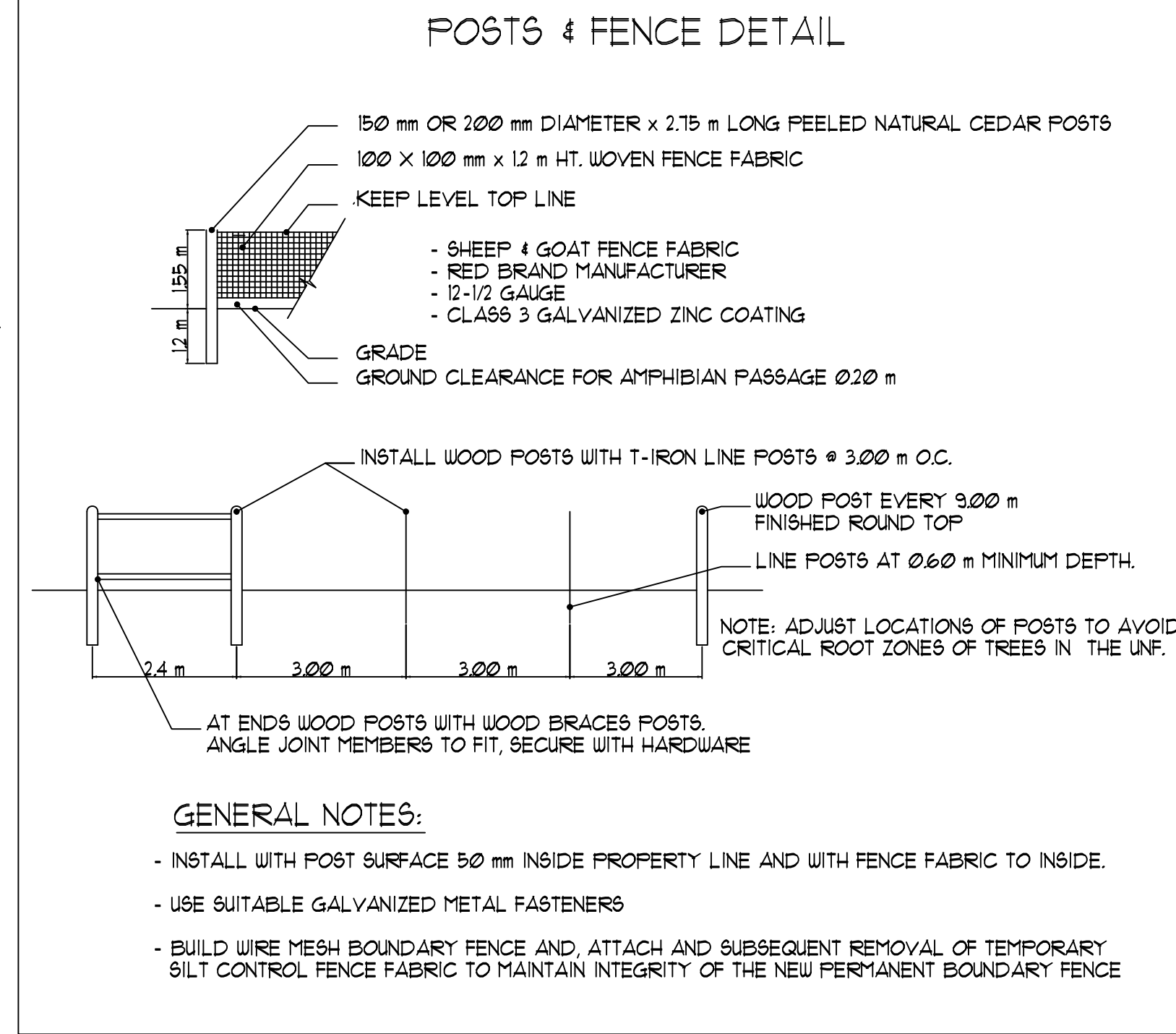
Sod shall be #1 nursery sod for lawns, uniformly cut and freshly cut. Cultivar blend consistent throughout. Do not use peat based sod supplied with plastic mesh. Lay sod within 36 hours of cutting, store in shade and keep cool until installed. Sod must be set with tight joints which are not visible upon completion. Do not overlap edges. Water sod within one hour of installation to thoroughly saturate soil and top 150mm of soil. Apply water by sprinkler method or similar temporary irrigation method which applies water in a manner which does not displace sod or soil. After sod has dried sufficiently, roll sodded area to ensure a good bond between sod and soil to remove minor irregularities in the lawn surface. Peg lawn pieces on slopes where necessary. Do not use metal pegs.

All sodded and seeded areas are subject to a one year warranty date of acceptance. Unseeded noted otherwise, areas are to be sodded. Seed as specified on drawings. Refer also to Golden Associates Report on Stormwater Management dated April 2017 for erosion and sediment control measures during construction.

**SHRUB & GROUND COVER PLANTING**

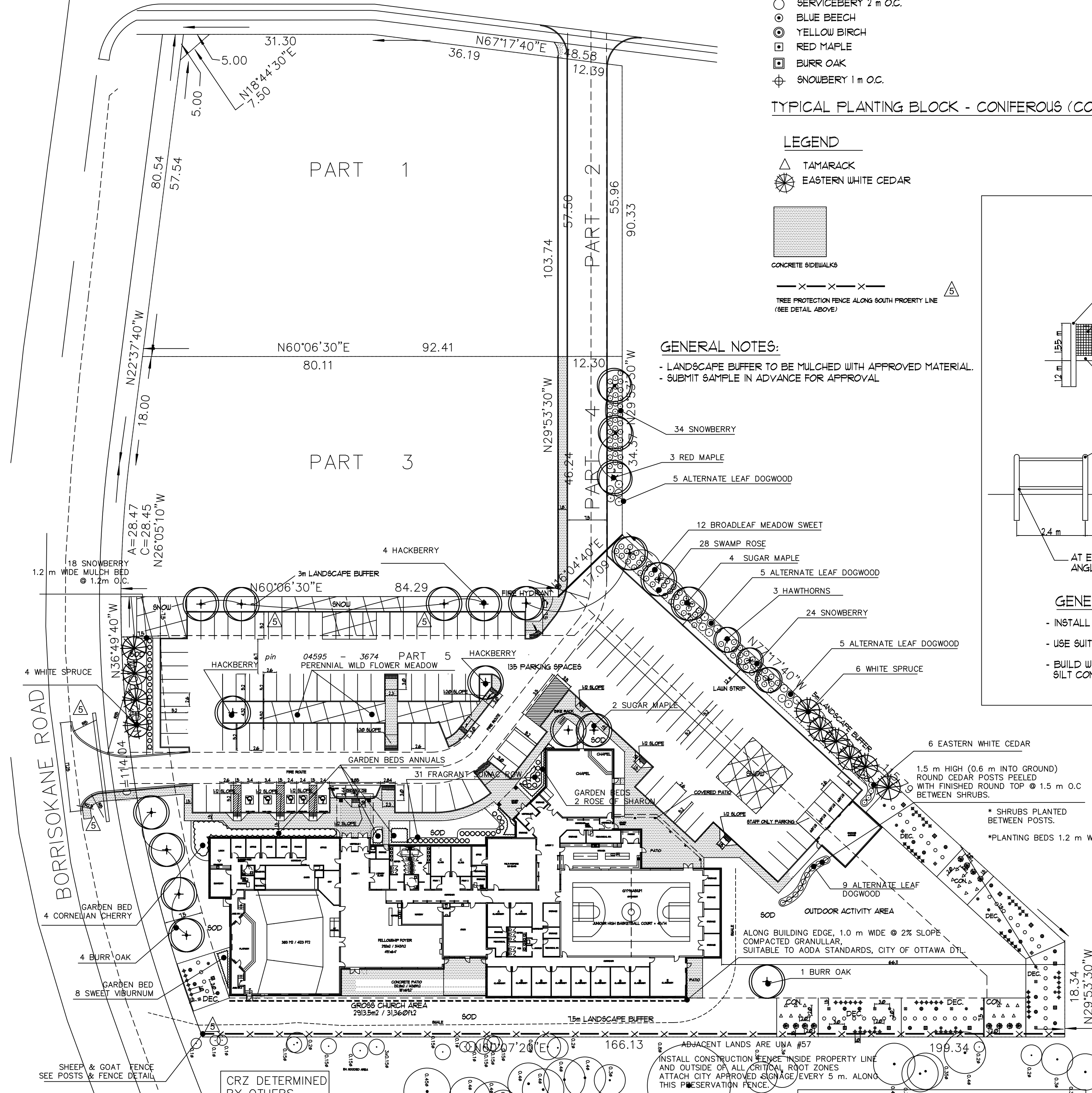
**PLANTING BEDS AND SOIL MIXTURE**

Shrubs and ground covers, to be contained in a continuous bed. Planting beds to be neatly set out and tool edged to create a smooth line with lawn. Generally, shrubs to be set out for approval prior to planting, and shrubs set in a line or hedge pattern to be set evenly spaced from edge of planting bed or walkway or curb, minimum 60cm. Soil mixture for planting beds and tree pits to be horticultural quality topsoil free of weeds and grass roots. May be available from stockpile. Topsoil to be blended with aged screened soil amendment such as commercially prepared leaf litter or barnyard manure, 2 parts topsoil and 1 part soil amendment. Prepare planting beds to 45cm depth, crown beds, meet walkway 50mm below finish grade of walk. Remove oil containers, plant and create a saucer at the base of each plant to facilitate watering. Water each plant thoroughly prior to placement of mulch. Install approved dark coloured mulch to a depth of 100mm in beds. Provide mulch sample for approval. See mulch notes on planting details.



**GENERAL NOTES:**

- INSTALL WITH POST SURFACE 50 mm INSIDE PROPERTY LINE AND WITH FENCE FABRIC TO INSIDE.
- USE SUITABLE GALVANIZED METAL FASTENERS
- BUILD WIRE MESH BOUNDARY FENCE AND, ATTACH AND SUBSEQUENT REMOVAL OF TEMPORARY SILT CONTROL FENCE FABRIC TO MAINTAIN INTEGRITY OF THE NEW PERMANENT BOUNDARY FENCE

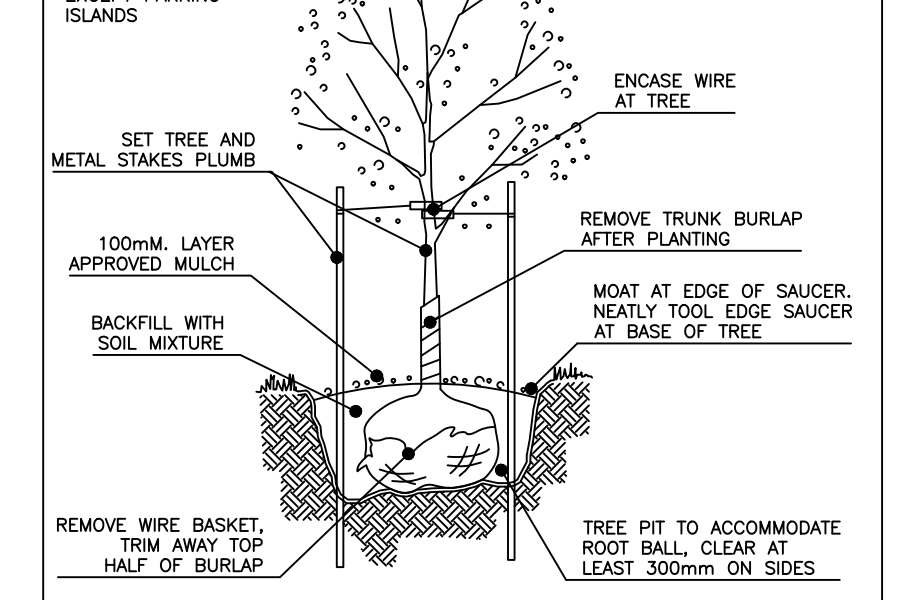
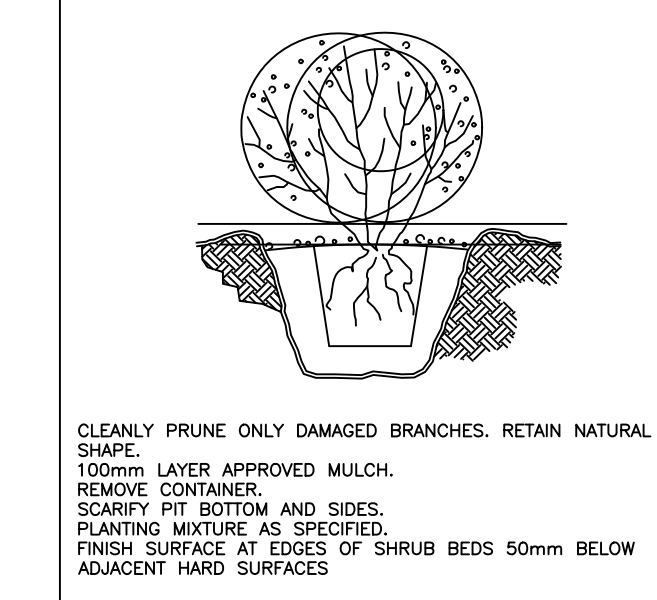


**LANDSCAPE PLAN - OVERALL**

The following mitigation measures shall be applied during site preparation and construction to minimize potential impacts to the Cambrian Woods UNF:

- Erect construction fencing 45 cms. inside the southern property line to prevent unnecessary damage to the roots and soils of the UNF during construction works. The fence must be highly visible (orange construction fence) and remain in place until all construction work is completed. Fencing at this location will be situated beyond the critical root zone (CRZ, i.e. 10 x the trunk diameter at breast height) of the trees of the UNF.
- Do not place any material or equipment within the CRZ of the tree;
- Do not attach any signs, notices or posters to any tree;
- Do not raise or lower the existing grade within the CRZ without approval;
- Do not damage the root system, trunk or branches of any tree;
- Tunnel or bore when digging within the CRZ of a tree; and
- Ensure that exhaust fumes from equipment are not directed towards the tree canopy in the UNF.

Environmental Impact Study and Tree Conservation Report for 3555 Borrisokane Road, Ottawa PA1461 2023-10-02 Kilgour & Associates Ltd. 15



| Quantity  | Size     | Botanical Name                        | Common Name                 |
|---|----------|---------------------------------------|-----------------------------|
| <b>DECIDUOUS TREES</b>                            |          |                                       |                             |
| 14  | 50mm cal | <i>Acer rubrum</i>                    | Red Maple                   |
| 6   | 50mm cal | <i>Acer saccharum</i>                 | Sugar Maple                 |
| 20  | 40mm cal | <i>Betula alleghaniensis</i>          | Yellow Birch                |
| 10  | 40mm cal | <i>Carpinus caroliniana</i>           | Blue Beech                  |
| 3   | 45mm cal | <i>Crataegus</i> spp.                 | Native Hawthorn             |
| 16  | 40mm cal | <i>Quercus macrocarpa</i>             | Burr Oak                    |
| 6   | 50mm cal | <i>Celtis occidentalis</i>            | Hackberry                   |
| <b>CONIFEROUS TREES</b>                           |          |                                       |                             |
| 10  | 200 cm   | <i>Picea glauca</i>                   | White Spruce                |
| 20  | 150 cm   | <i>Larix laricina</i>                 | Tamarack                    |
| 10  | 150 cm   | <i>Thuja occidentalis</i>             | Eastern White Cedar         |
| <b>DECIDUOUS SHRUBS</b>                           |          |                                       |                             |
| 41  | 120 cm   | <i>Amelanchier canadensis</i>         | Serviceberry                |
| 2   | 100 cm   | <i>Cornus ros</i>                     | Cornelian Cherry            |
| 2   | 150 cm   | <i>Hibiscus syriacus 'Bluebird'</i>   | Blue Bird Rose of Sharon    |
| 31  | 40 cm    | <i>Rhus aromatica</i>                 | Fragrant Sumac              |
| 242   | 50 cm    | <i>Symphoricarpos albus</i>           | Snowberry                   |
| 24  | 120 cm   | <i>Cornus alternifolia</i>            | Alternate Leaf Dogwood      |
| 12  | 40 cm    | <i>Rosa palustris</i>                 | Swamp Rose                  |
| 28  | 60 cm    | <i>Spiraea latifolia</i>              | Broadleaf Meadow Sweet      |
| 8   | 60 cm    | <i>Viburnum lentago</i>               | Sweet (hairyberry) Viburnum |
| <b>CONIFEROUS SHRUBS</b>                          |          |                                       |                             |
| <b>PERENNIALS - plug trays, local 1250 plants</b> |          |                                       |                             |
|   |          | <i>Anemone canadensis</i>             | Canada Anemone              |
|   |          | <i>Rubusidula rugida</i>              | Black-Eyed Susan            |
|   |          | <i>Symphoricarpos coccineangensis</i> | Sky Blue Aster              |
|   |          | <i>Trillium pubescens</i>             | Tall Meadow Rue             |

Notes to the contractor.

a. No grading, structures, retaining walls, construction or site/construction access are permitted on or from the UNA #57.

b. The placement of unapproved materials or structures within UNA #57 is not permitted at any stage of development. This includes, but is not limited to, topsoil stockpiling, construction trailers and vehicles, construction materials and debris, sales/promotional trailers and signage.

c. The contractor is responsible for maintaining park and tree preservation hoarding in an approved and functioning condition as required by the City of Ottawa through all phases of construction.

d. Inform the Identified City Dept. of the Construction Schedule as it pertains to the municipally owned parkland, its protective hoarding, clean ups, reinstatement and issues affecting parkland use, construction and maintenance. It is the responsibility of the applicant to arrange for City of Ottawa inspections and approvals as required.

e. Remove construction related debris or litter that has migrated or has the potential to migrate into the adjacent municipally owned by UNA #57.

f. The Applicant is responsible for the ensuring that tree protection hoarding is maintained throughout all phases of demolition and construction in the location and condition as approved by the City of Ottawa. No materials (building materials, soil, etc.) may be stockpiled within the area of hoarding.

**SITE PLAN STATISTICS**

|  |
|--|
| SITE PLAN = PARTS 2, 4, 5                    |
| SITE AREA = 13923 M <sup>2</sup>             |
| BUILDING AREA = 29135 M <sup>2</sup> (20.9%) |
| PARKING AREA = 4566 M <sup>2</sup> (32.8%)   |
| SIDEWALKS AREA = 811 M <sup>2</sup> (6.25%)  |
| LANDSCAPE AREA = 55105 M <sup>2</sup> (40%)  |
| PARKING REQUIRED = 110 SPACES + LOADING      |
| PARKING PROVIDED = 135 SPACES + 1 LOADING    |

**SP PROJECT NUMBER**

| No. | Revisions              | Date     |
|-----|------------------------|----------|
| 5   | Issue for SPA comments | 17-09-24 |
| 4   | Issue for SPA comments | 06-05-24 |
| 3   | Issue for SPA comments | 05-02-24 |
| 2   | Issue for SPA comments | 30-10-23 |
| 1   | Issue for SPA          | 28-06-23 |

All dimensions to be checked and verified on the job. Any discrepancies are to be reported to the Consultant. All drawings remain the property of the Consultant. Only latest approved drawings to be used for construction.

Miriam L.R. Mutton  
 OALA CSLA  
 Landscape Architect  
 Cobourg, Ontario  
 (905) 372-1151

Project  
**OTTAWA KOREAN COMMUNITY CHURCH**  
 3555 BORRISOKANE ROAD  
 OTTAWA, ONTARIO

**LANDSCAPE AND TREE PRESERVATION PLAN**

|         |              |             |
|---------|--------------|-------------|
| Drawn   | COA          | Project No. |
| Checked | MM           | Drawing No. |
| Date    | May 18, 2023 |             |
| Scale   | 1 : 500      |             |

FILE NUMBER D07-12-24-0063  
 PLAN NUMBER #18788

**L1**