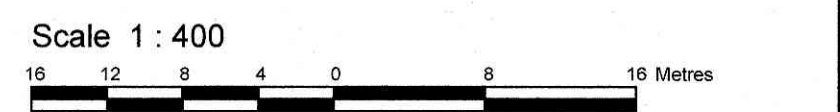


**TOPOGRAPHICAL PLAN OF SURVEY OF
PART OF LOT 11
CONCESSION 3 (RIDEAU FRONT)
Geographic Township of Nepean
CITY OF OTTAWA**
Surveyed by Annis, O'Sullivan, Vollebek Ltd.

Plan amended on January 24, 2024 to show location of trees along the southerly property limit.



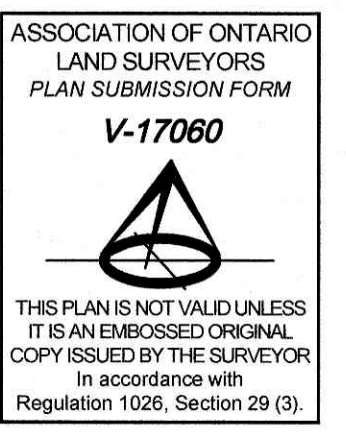
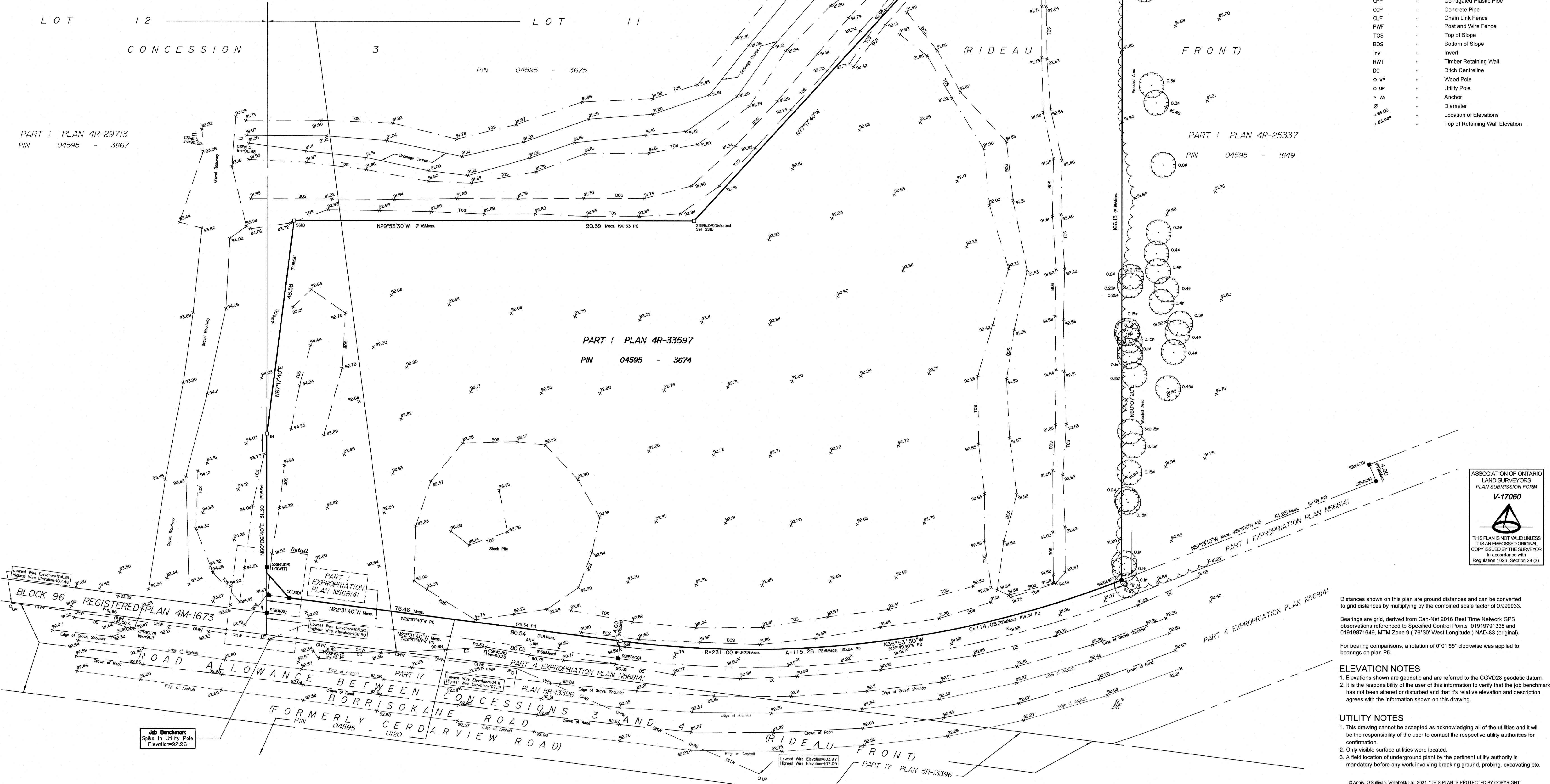
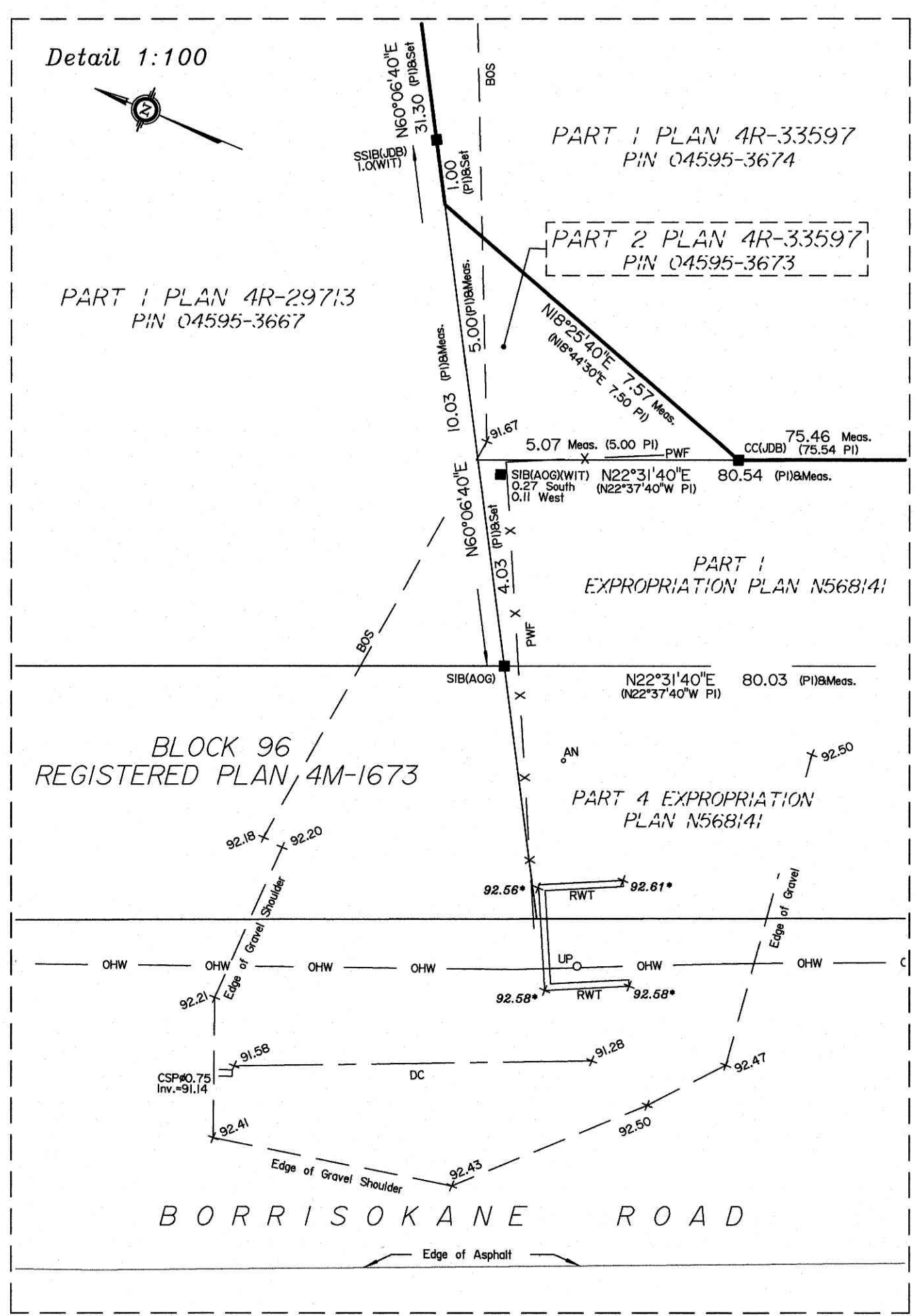
Metric
DISTANCES SHOWN ON THIS PLAN ARE IN METRES AND CAN BE CONVERTED TO FEET BY DIVIDING BY 0.3048

Surveyor's Certificate
I CERTIFY THAT:
1. This survey and plan are correct and in accordance with the Surveys Act and the Surveyors Act and the regulations made under them.
2. The survey was completed on the 18th day of October, 2021.

Oct. 29, 2021
Date
E. H. Herveyer
Ontario Land Surveyor

Notes & Legend

Denotes	
—	Survey Monument Planted
—	Survey Monument Found
SSIB	Standard Iron Bar
SSIB	Short Standard Iron Bar
IB	Iron Bar
CC	Cut Cross
(WIT)	Witness
Mess.	Measured
(AOG)	Annis, O'Sullivan, Vollebek Ltd.
(P1)	Plan 4R-33597
(P2)	Plan 4R-21085
(P3)	Plan 4R-25337
(P4)	Plan 4R-29713
(P5)	Expropriation Plan N568141
—	Overhead Wires
CSP	Corrugated Steel Pipe
CPP	Corrugated Plastic Pipe
CCP	Concrete Pipe
CLF	Chain Link Fence
PWF	Post and Wire Fence
TOS	Top of Slope
BOS	Bottom of Slope
Inv	Invert
RWT	Timber Retaining Wall
DC	Ditch Centreline
○ WP	Wood Pole
○ UP	Utility Pole
• AN	Anchor
○	Diameter
• 65.00'	Location of Elevations
• 65.00'	Top of Retaining Wall Elevation



Distances shown on this plan are ground distances and can be converted to grid distances by multiplying by the combined scale factor of 0.999933.
Bearings are grid, derived from Can-Net 2016 Real Time Network GPS observations referenced to Specified Control Points 01919791336 and 01919871649, MTM Zone 9 (78°30' West Longitude) NAD-83 (original).
For bearing comparisons, a rotation of 0°01'55" clockwise was applied to bearings on plan P5.

ELEVATION NOTES
1. Elevations shown are geoidetic and are referred to the CGVD28 geoidetic datum.
2. It is the responsibility of the user of this information to verify that the job benchmark has not been altered or disturbed and that its relative elevation and description agrees with the information shown on this drawing.

UTILITY NOTES
1. This drawing cannot be accepted as acknowledging all of the utilities and it will be the responsibility of the user to contact the respective utility authorities for confirmation.
2. Only visible surface utilities were located.
3. A field location of underground plant by the pertinent utility authority is mandatory before any work involving breaking ground, probing, excavating etc.