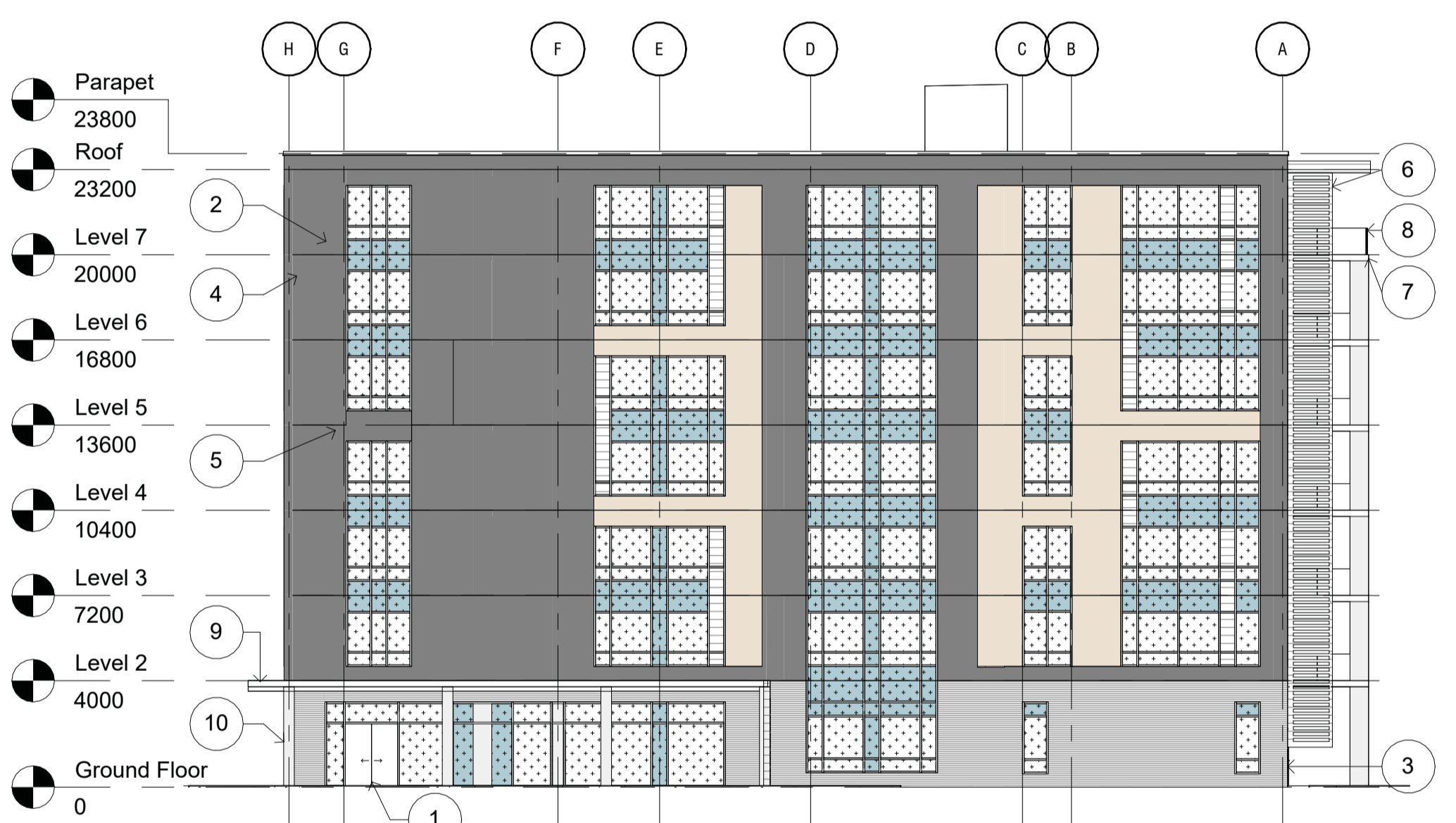
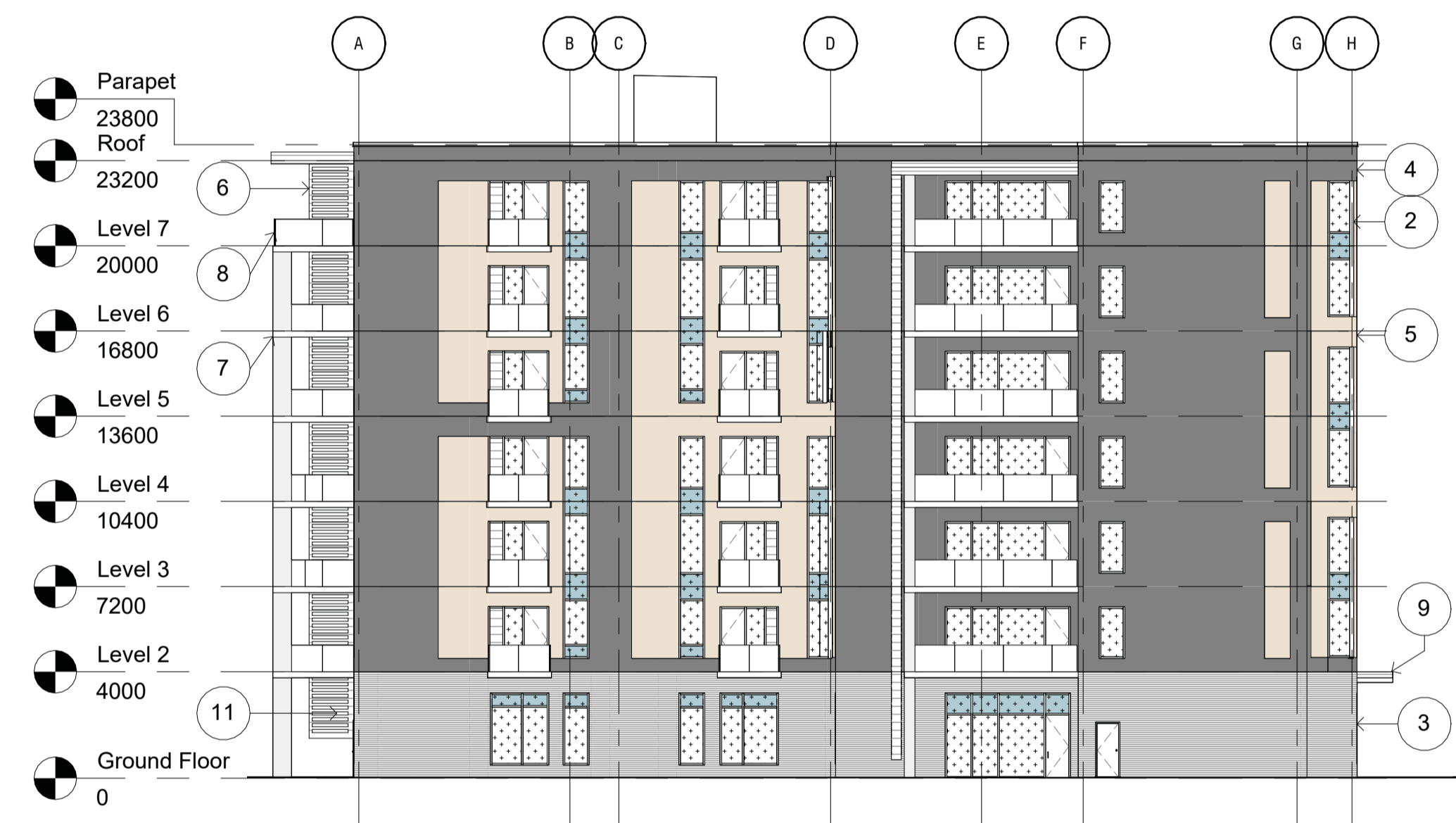




1 North Elevation - SPC
A200SP 1:200



2 East Elevation - SPC
A200SP 1:200



3 West Elevation - SPC
A200SP 1:200



4 South Elevation - SPC
A200SP 1:200

DRAWING LEGEND	
	BIRD-SAFE GLAZING: VISUAL MARKER (PATTERN) APPLIED TO THE EXTERIOR SURFACE OF THE GLASS.

DRAWING NOTES	
1	SLIDING ENTRANCE DOORS
2	CURTAIN WALL SYSTEM
3	BRICK WALL ASSEMBLY
4	CEMENTITIOUS BOARD WALL ASSEMBLY (DARK COLOUR)
5	CEMENTITIOUS BOARD WALL ASSEMBLY (LIGHT COLOUR)
6	SCREEN WALL
7	BALCONY
8	GLAZED GUARDRAIL
9	CANOPY
10	CANOPY STRUCTURAL COLUMN
11	ROLLING OVERHEAD DOOR

St. Patrick's Home of Ottawa Inc.

NO.	DATE	ISSUE
3	24/07/08	ISSUED FOR FINAL SITE PLAN CONTROL
2	24/04/15	RESUBMISSION FOR SITE PLAN CONTROL PHASE 3 PRE-CONSULTATION
1	24/01/23	ISSUED FOR SITE PLAN CONTROL

LES IDÉES, DESIGNS, ARRANGEMENTS ET PLANS INDICÉS OU PRÉSENTÉS PAR CE DESSIN APPARTIENNENT À EDWARD J. CUHACI AND ASSOCIATES INC. ET ONT ÉTÉ CRÉÉS ET DÉVELOPPÉS POUR ÊTRE UTILISÉS DANS LE CADRE DU PROJET INDICÉ. ILS NE DOIVENT PAS ÊTRE UTILISÉS OU COMMUNIQUÉS À QUI QUE CE SOIT ET À QUELQUE FIN QUE CE SOIT SANS LA PERMISSION ÉCRITE DE EDWARD J. CUHACI AND ASSOCIATES INC.

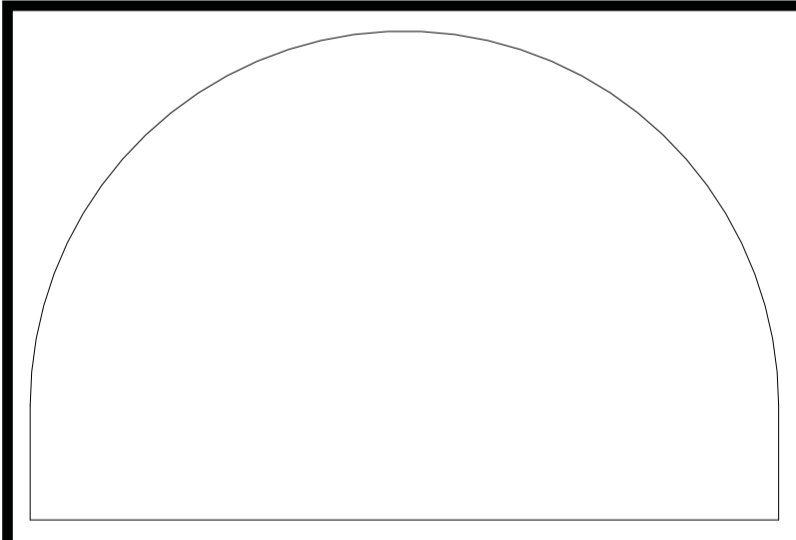
L'ARCHITECTE DÉCLINE TOUTE RESPONSABILITÉ DÉCOULANT DE PROBLÈMES FAISANT SUITE AU NON RESPECT DES PLANS, DEVIS ET DE L'INTENTION DU CONCEPT QU'ILS INDIQUENT OU DE TOUTS LES PROBLÈMES POUVANT RÉSULTER DU DÉFAUT DE BIENS D'OBTENIR OU DE SUIVRE LES INSTRUCTIONS DE L'ARCHITECTE EN CE QUI CONCERNE LES ERREURS, OMISSIONS, CONTRADICTIONS, AMBIGÜITÉS OU CONFLITS ALLÉGUÉS.

L'ENTREPRENEUR DOIT VÉRIFIER TOUTES LES DIMENSIONS ET INFORMER L'ARCHITECTE DE TOUT ÉCART AVANT LE DÉBUT DES TRAVAUX. NE PAS MESURER LES DESSINS À L'ÉCHELLE.

ALL IDEAS, DESIGNS, ARRANGEMENTS, AND PLANS INDICATED OR PRESENTED BY THIS DRAWING ARE OWNED BY AND THE PROPERTY OF EDWARD J. CUHACI AND ASSOCIATES INC. AND WERE CREATED, EVOLVED, AND DEVELOPED FOR USE ON AND IN CONNECTION WITH THE SPECIFIED PROJECT. NONE OF THE IDEAS, DESIGNS, ARRANGEMENTS OR PLANS SHALL BE USED BY OR DISCLOSED TO ANY PERSON, FIRM, OR CORPORATION FOR ANY PURPOSE WHATSOEVER WITHOUT THE WRITTEN PERMISSION OF EDWARD J. CUHACI AND ASSOCIATES INC.

THE ARCHITECT WAIVES ANY AND ALL RESPONSIBILITY AND LIABILITY FOR PROBLEMS WHICH ARISE FROM FAILURE TO FOLLOW THESE PLANS, SPECIFICATIONS, AND THE DESIGN INTENT THEY CONVEY, OR FOR PROBLEMS WHICH ARISE FROM OTHERS' FAILURE TO OBTAIN AND/OR FOLLOW THE ARCHITECT'S GUIDANCE WITH RESPECT TO ANY ERRORS, OMISSIONS, INCONSISTENCIES, AMBIGÜITIES OR CONFLICTS WHICH ARE ALLEGED.

CONTRACTOR TO VERIFY ALL DIMENSIONS AND NOTIFY THE ARCHITECT OF ANY DISCREPANCIES BEFORE WORK COMMENCES. DO NOT SCALE DRAWINGS.



EDWARD J. CUHACI & ASSOCIATES ARCHITECTS Inc.
171 Slater St, Suite 100, Ottawa, Ontario, K1P 5H7
Fax: (613) 236-1944 Telephone: (613) 236-7135 E-mail: info@cuhaci.com

PROJECT TITLE/TITRE DU PROJET
NEW SENIOR APARTMENT BUILDING
2865 Riverside Dr. #226, Ottawa, ON K1V 8N5
St. Patrick's Home of Ottawa

DRAWING TITLE/TITRE DU DESSIN
ELEVATIONS

SCALE ÉCHELLE	As indicated	PROJ. No. 2235	ISSUE No. 3
DRAWN BY DESSINE PAR	JC-G	DRAWING/DESSIN	
CHECKED BY VÉRIFIÉ PAR			
DATE	2024		

APPROVED
By Allison Hamlin at 12:54 pm, Sep 16, 2024

AHamlin

ALLISON HAMLIN
MANAGER, DEVELOPMENT REVIEW ALL WARDS
PLANNING, DEVELOPMENT & BUILDING SERVICES
DEPARTMENT, CITY OF OTTAWA

A200SP

C:\Users\edwardj\Documents\2235 - St. Patrick's Home of Ottawa\A200SP.dwg

D07-224-004