

PROPOSED TREE LIST							CANOPY CALCULATION CHART			
KEY	QTY	BOTANICAL NAME	COMMON NAME	SIZE	CONDITION	REMARKS	ORIGIN	CROWN AREA PER TREE (m <sup>2</sup> )	CANOPY AREA SUBTOTAL (m <sup>2</sup> )	% OF TOTAL CANOPY AREA
AC	4	Amelancier canadensis	Shadblow Serviceberry	60mm cal.	B&B		Native	78.5	314	9%
ACM	2	Amelancier canadensis multistem	Multistem Serviceberry	60mm cal.	B&B	Multi-stem	Native	78.5	157	5%
AS	1	Acer saccharum	Sugar Maple	60mm cal.	B&B		Native	154	154	5%
AF	4	Acer x freemanii	Freeman's Maple	60mm cal.	B&B		Native	154	616	19%
AC	3	Aesculus glabra	Ohio Buckeye	60mm cal.	B&B		Native	154	462	14%
BP	2	Betula populifolia 'Multi-stem'	Multi-stem Gray Birch	60mm cal.	B&B	Multi-stem	Native	78.5	157	5%
CO	4	Celtis occidentalis	Hackberry	60mm cal.	B&B		Native	154	616	19%
GT	2	Gleditsia triacanthos 'Skyline'	Skyline Honey Locust	60mm cal.	B&B		Native	154	308	5%
MD	2	Malus 'Dolgo'	Dolgo Crabapple	60mm cal.	B&B		Non-Native	78.5	157	5%
MP	2	Malus 'Profusion'	Profusion Crabapple	60mm cal.	B&B		Non-Native	78.5	157	5%
QR	2	Quercus rubra	Red Oak	60mm cal.	B&B		Native	154	308	9%

PROPOSED TREE AND PLANT LIST NOTES:

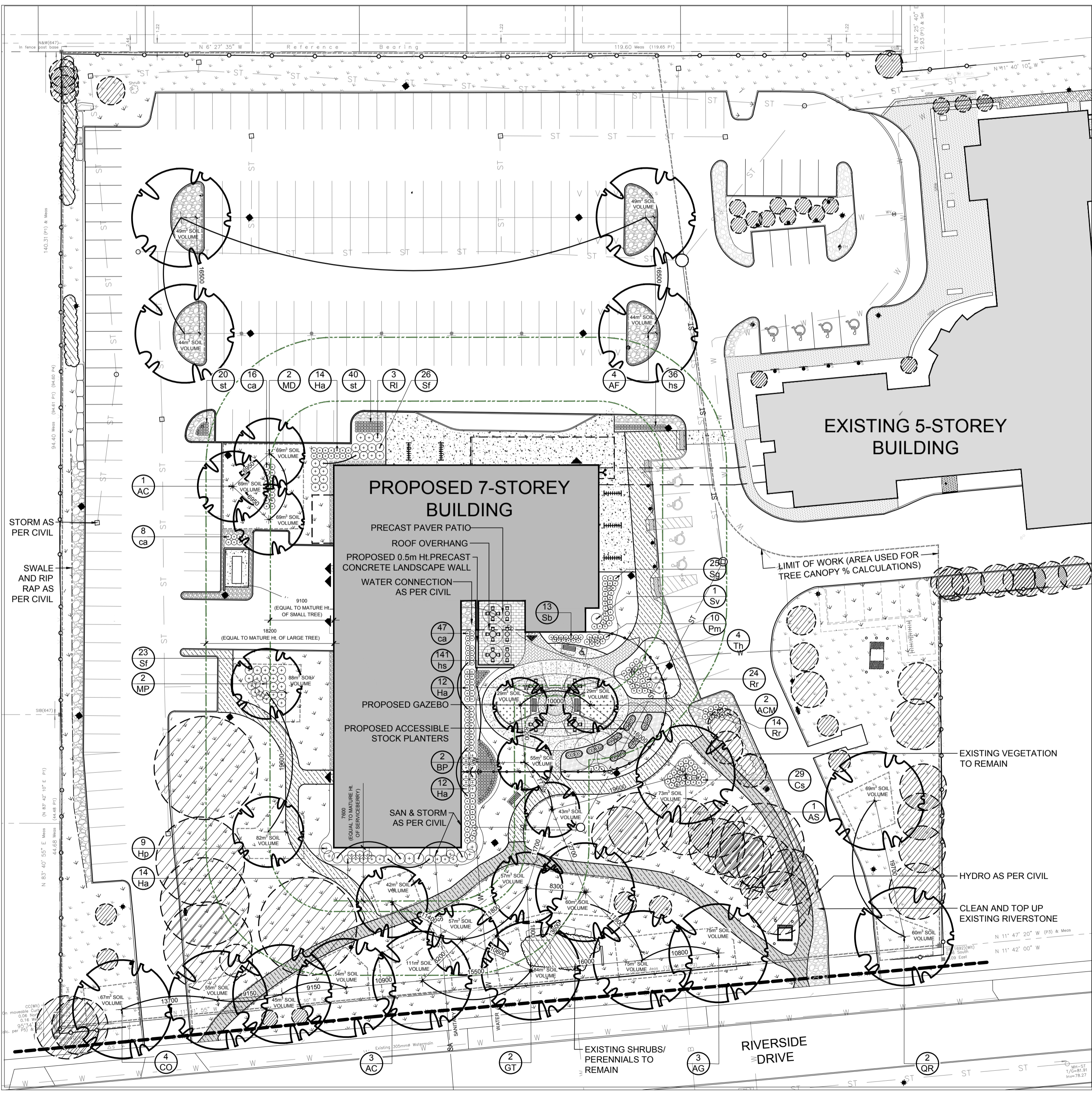
- PROPOSED TREES SHOWN AT 40-YEAR CANOPY PROJECTIONS.
  - 3m CANOPY DIAMETER FOR SMALL TREES
  - 10m CANOPY DIAMETER FOR MEDIUM TREES
  - 12m CANOPY DIAMETER FOR LARGE TREES
- ALL PROPOSED PLANT MATERIAL TO BE PLANTED ON PRIVATE PROPERTY.
- TREE SETBACK FROM BUILDING EQUAL TO THEORETICAL MATURE HEIGHT OF TREE - AS PER GEOTECHNICAL REPORT.
- REFER TO GEOTECHNICAL REPORT FOR LOCATION OF CHAMPLAIN SEA CLAY DEPOSITS.
- SOIL VOLUME CALCULATIONS ARE BASED ON A DEPTH OF 1.5m.

PROPOSED TREE CANOPY COVERAGE TOTAL	3,409m <sup>2</sup>
EXISTING TREE CANOPY COVERAGE TOTAL	2,440m <sup>2</sup>
SITE AREA (INCL. BUILDING FOOTPRINT)	14,074m <sup>2</sup>
SITE CANOPY COVER	41.6%
CANOPY COVER TARGET	40%

*Allan Hamlin*

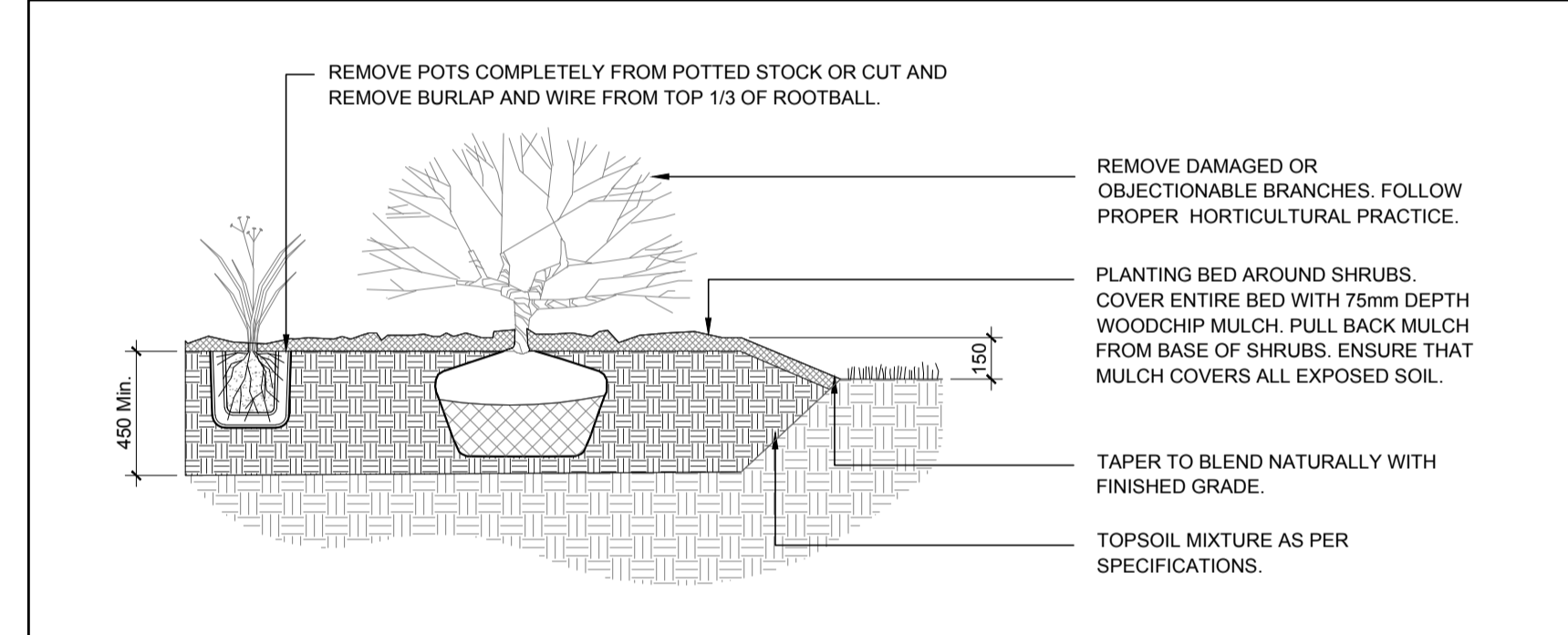
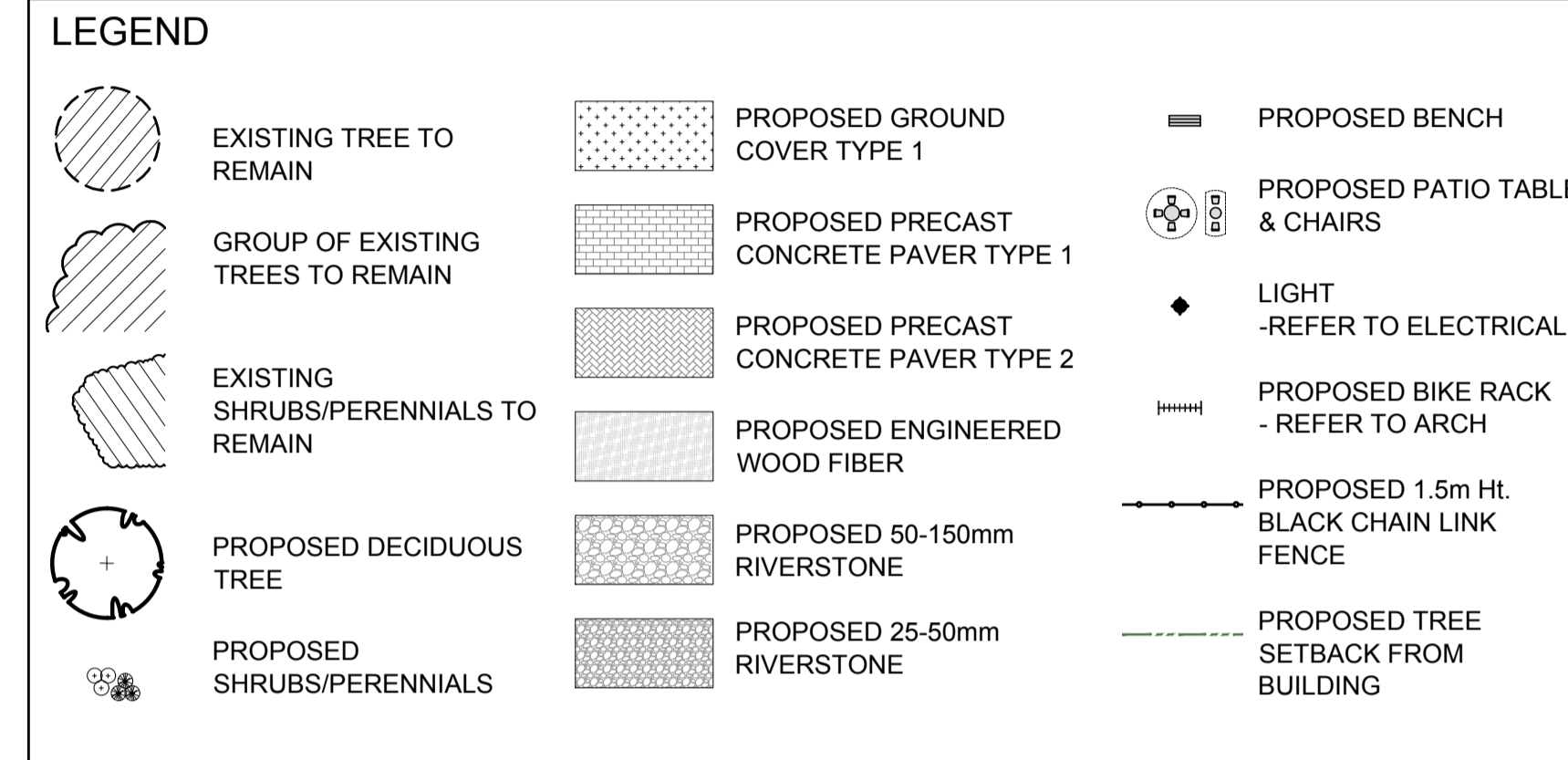
**ALLISON HAMLIN**  
MANAGER, DEVELOPMENT REVIEW ALL WARDS  
PLANNING, DEVELOPMENT & BUILDING SERVICES  
DEPARTMENT, CITY OF OTTAWA

**APPROVED**  
By Allison Hamlin at 12:54 pm, Sep 16, 2024

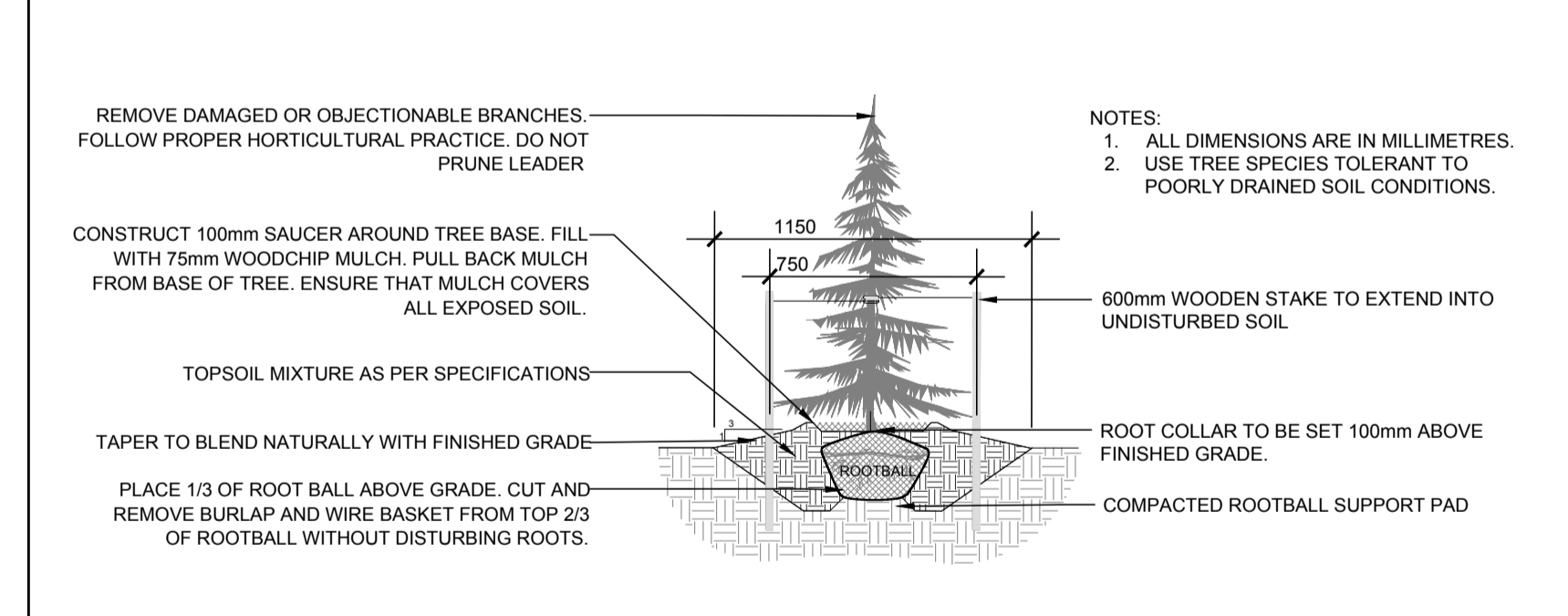


1 LANDSCAPE PLAN  
L.2 SCALE: 1:400

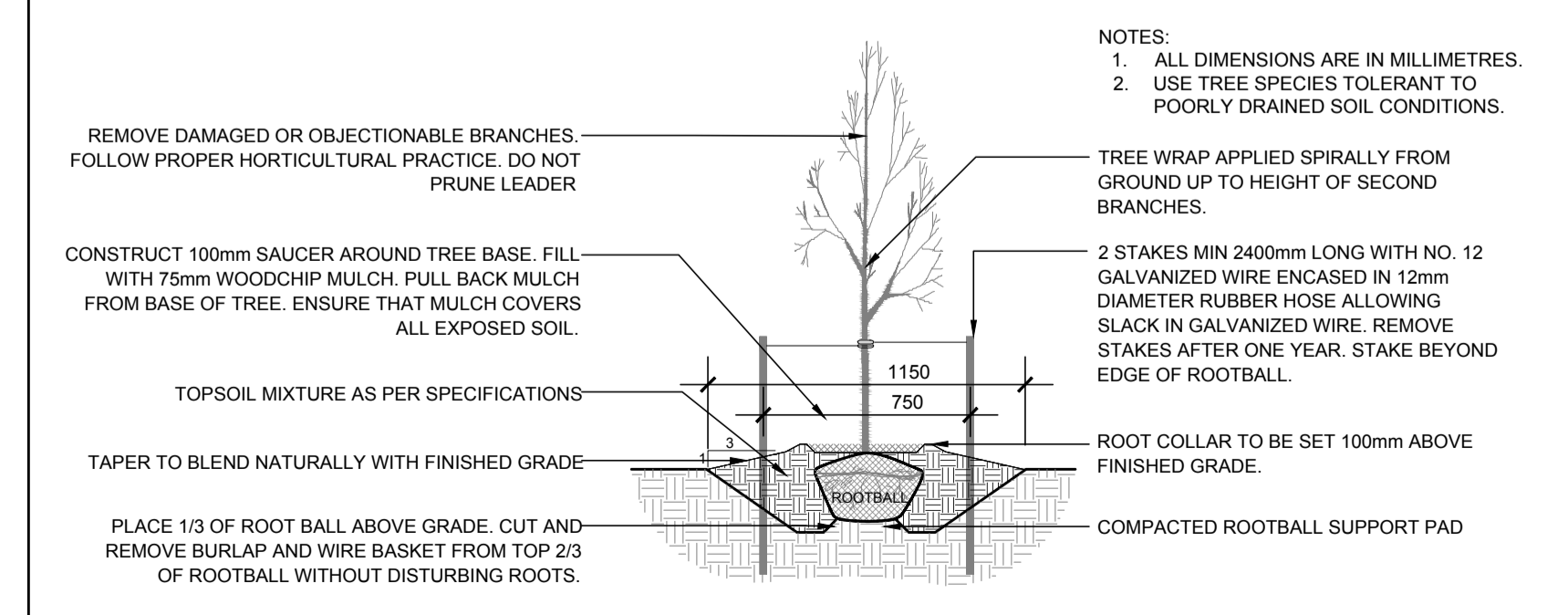
PROPOSED PLANT LIST						
KEY	QTY	BOTANICAL NAME	COMMON NAME	SIZE	CONDITION	REMARKS
<b>SHRUBS</b>						
Cs	29	Cornus sericea	Red Osier Dogwood	800mm ht.	Potted	1200 mm o.c.
Ha	60	Hydrangea arborescens 'Annabelle'	Annabelle Hydrangea	3 gal. pot	Potted	800 mm o.c.
Hp	9	Hydrangea paniculata 'Peegee'	Peegee Hydrangea	1200mm ht.	Potted	2000 mm o.c.
Pm	10	Pinus mugo 'Pumilio'	Dwarf Mugo Pine	600mm spr.	Potted	1200 mm o.c.
Ri	3	Rhus typhina 'Laciniata'	Cuttleaf Staghorn Sumac	800mm ht.	Potted	1200 mm o.c.
Rr	38	Rosa rugosa	Rugosa Rose	800mm ht.	Potted	800 mm o.c.
Sb	13	Spiraea x bumalda 'Anthony Waterer'	Anthony Waterer Spiraea	600mm ht.	Potted	1000 mm o.c.
Sf	39	Spiraea japonica 'Froebelii'	Froebel's Spiraea	500 mm ht.	Potted	800 mm o.c.
Sg	25	Spiraea x arguta	Garland Spiraea	800mm spr.	Potted	1000 mm o.c.
Sv	1	Syringa vulgaris	Common Purple Lilac	1200mm ht.	Potted	1500 mm o.c.
Th	4	Taxus media 'Hicksii'	Hick's Yew	1000 mm ht.	Potted	1500 mm o.c.
<b>PERENNIALS</b>						
ca	71	Calamagrostis x acutiflora 'Karl Foerster'	Karl Foerster Grass	250mm pot	Potted	800 mm o.c.
hs	177	Hemerocallis 'Stella D'Oro'	Stella D'Oro Day Lily	1 gal pot	Potted	300 mm o.c.
la	148	Leymus arvensis	Blue Lyme Grass	1 gal pot	Potted	300 mm o.c.
st	60	Sedum telephium 'Autumn Joy'	Autumn Joy Sedum	150mm pot	Potted	400 mm o.c.



4 SHRUB / PERENNIAL PLANTING  
L.2 SCALE: NTS



3 CONIFEROUS TREE PLANTING  
L.2 SCALE: NTS



2 DECIDUOUS TREE PLANTING  
L.2 SCALE: NTS

CLIENT

CONSULTANTS

ARCHITECTS:

**EDWARD J. CUHACI & ASSOCIATES ARCHITECTS INC.**  
171 Slater St, Suite 100, Ottawa, Ontario, K1P 5H7  
Fax: (613) 236-1944 Telephone: (613) 236-7135 E-mail: info@cuha.com

CIVIL ENGINEERS:

WSP CANADA INC.  
1224 GARDINERS ROAD, SUITE 201  
KINGSTON, ONTARIO  
CANADA K7P 0G2  
PHONE: 613-634-7373  
WWW.WSP.COM

SURVEYORS:

**FARLEY, SMITH & DENIS SURVEYING LTD.**  
ONTARIO LAND SURVEYORS  
CANADA LANDS SURVEYORS  
190 COLONNADE ROAD, OTTAWA, ONTARIO K2E 7J5

- GENERAL NOTES:
- IT IS THE RESPONSIBILITY OF THE APPROPRIATE CONTRACTOR OR OFFICIAL TO REPORT ANY ERRORS, OMISSIONS OR DISCREPANCIES ON THIS PLAN WITH ACTUAL SITE CONDITIONS TO THE LANDSCAPE ARCHITECT BEFORE PROCEEDING WITH CONSTRUCTION.
  - THE CONTRACTOR IS TO NOTIFY ALL UTILITY COMPANIES AND AUTHORITIES PRIOR TO ANY EXCAVATION AND ASCERTAIN LOCATIONS OF UNDERGROUND SERVICES.
  - THE CONTRACTOR IS TO REINSTATE ALL AREAS AND ITEMS DAMAGED AS A RESULT OF CONSTRUCTION ACTIVITY.
  - THE CONTRACTOR IS TO COMPLY WITH ALL PERTINENT CODES AND BY-LAWS.
  - THE CONTRACTOR IS TO MAINTAIN A POSITIVE SURFACE RUN-OFF THROUGHOUT THE ENTIRE CONSTRUCTION PERIOD.
  - THE LANDSCAPE ARCHITECT IS NOT RESPONSIBLE FOR SUBSURFACE CONDITIONS.
  - THE CONTRACTOR IS TO IDENTIFY ALL EXISTING TREES TO REMAIN ON SITE WITH THE LANDSCAPE ARCHITECT PRIOR TO CONSTRUCTION.
  - THE CONTRACTOR IS TO STAKE THE PROPOSED LOCATION OF ALL PLANT MATERIAL IN CONJUNCTION WITH THE LANDSCAPE ARCHITECT PRIOR TO EXCAVATION.
  - MINIMUM DISTANCES FOR SELECTED DECIDUOUS TREES ARE AS FOLLOWS:
    - BUILDING FOUNDATIONS - REFER TO GEOTECH
    - SIDEWALKS - 1.5M
    - PUBLIC STREETS - 2.5M
    - UNDERGROUND INFRASTRUCTURE - 2.0M
  - ALL TREES WITHIN 1M OF UNDERGROUND UTILITY TRENCHES ARE TO BE EXCAVATED BY HAND.
  - REMOVE ALL PROTECTIVE WRAPPING FROM TREE TRUNKS AFTER INSTALLATION.
  - STAKING OF TREES SHALL ONLY BE PERFORMED IF NECESSARY.
  - ENSURE THAT MULCH IS PULLED BACK A MINIMUM DISTANCE OF 75MM FROM BASE OF TREE TRUNK.
  - THIS PLAN HAS BEEN DEVELOPED AS PER THE GEOTECHNICAL REPORT (NOVEMBER 2022, STANTEC CONSULTING LTD).

No.	Issue	Date	DR	CK
8	ISSUED FOR FINAL SITE PLAN CONTROL	07/25/2024	WF	JL
7	RESUBMISSION FOR SPC PHASE 3 PRE CONSULTATION	04/26/2024	WF	JL
6	ISSUED FOR COORDINATION	04/05/2024	WF	JL
5	ISSUED FOR DISCUSSION AND REVIEW	04/04/2024	WF	JL
4	ISSUED FOR DISCUSSION AND REVIEW	03/22/2024	WF	JL
3	ISSUED FOR SPA	01/23/2024	WF	JL
2	ISSUED FOR DISCUSSION AND REVIEW	07/28/2023	WF	JL
1	ISSUED FOR DISCUSSION AND REVIEW	11/04/2022	ML	JL

**JAMES B. LENNOX & ASSOCIATES INC.**  
**LANDSCAPE ARCHITECTS**  
3332 CARLING AVE. OTTAWA, ONTARIO K2H 5A8  
Tel. (613) 722-5168 Fax. (1866) 343-3942

PROJECT  
**ST. PATRICK'S SENIORS APARTMENTS**  
2865 RIVERSIDE DRIVE, OTTAWA ON

DRAWING  
**LANDSCAPE PLAN**

STAMP

SCALE  
AS SHOWN

START DATE  
OCTOBER 2022

PROJECT NO.  
23EJC2306

PROJECT NORTH

DRAWING NO.  
**L.2**