

STORM STRUCTURE	TOP OF GRATE ELEVATION	STRUCTURE INFO						OUTLET	
		INLET	INLET	OUTLET	SIZE	OPSD	COVER	DIAMETER	TYPE
CB201	79.90			78.300	600X600mm	OPSD 705.010	S19.1	250	PVC SDR-35
CB202	80.10			78.500	600X600mm	OPSD 705.010	S19.1	250	PVC SDR-35
CB203	80.93	79.700	79.590	78.980	600X600mm	OPSD 705.010	S19.1	250	PVC SDR-35
STMH201	80.38		77.390	77.390	1200mm DIA.	OPSD 701.010	S24.1	375	PVC SDR-35
STMH202	80.35	78.100	77.370	77.340	1200mm DIA.	OPSD 701.010	S24.1	375	PVC SDR-35
STMH203	80.89		78.646	78.460	1200mm DIA.	OPSD 701.010	S24.1	250	PVC SDR-35
LCB01	80.95			79.950	300mm DIA.	S31	S30	250	HDPE
LCB02	80.95			79.950	300mm DIA.	S31	S30	250	HDPE
LCB03	80.95		79.770	79.770	300mm DIA.	S31	S30	250	HDPE
DICB204	79.09			78.200	300mm DIA.	OPSD 705.010	OPSD 705.030	200	PVC SDR-35

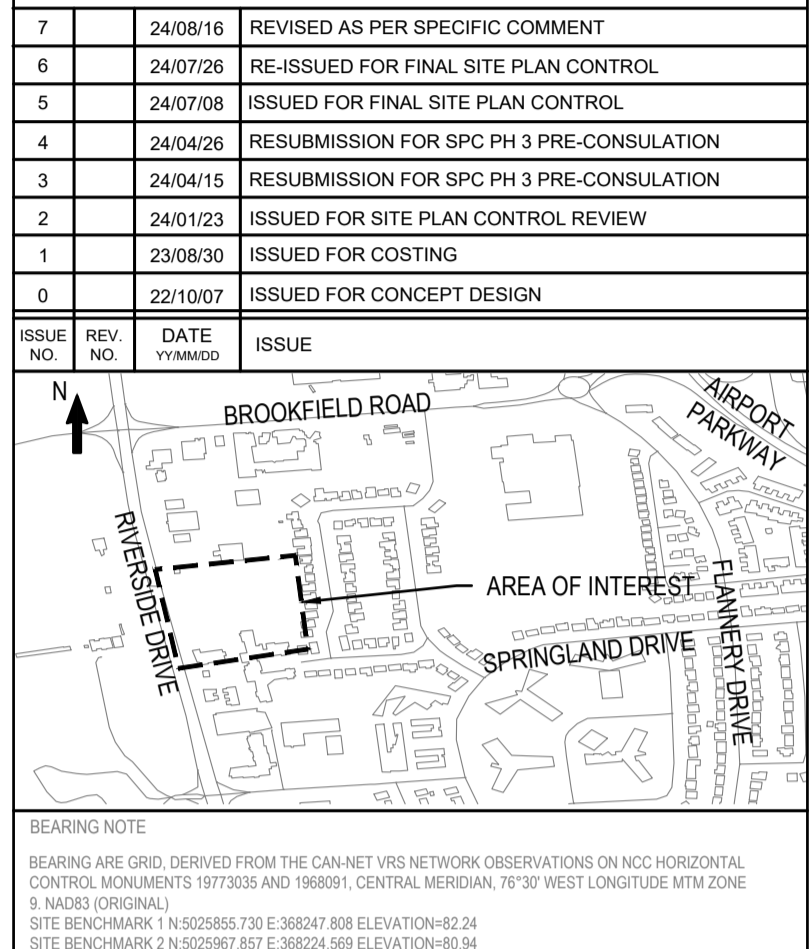
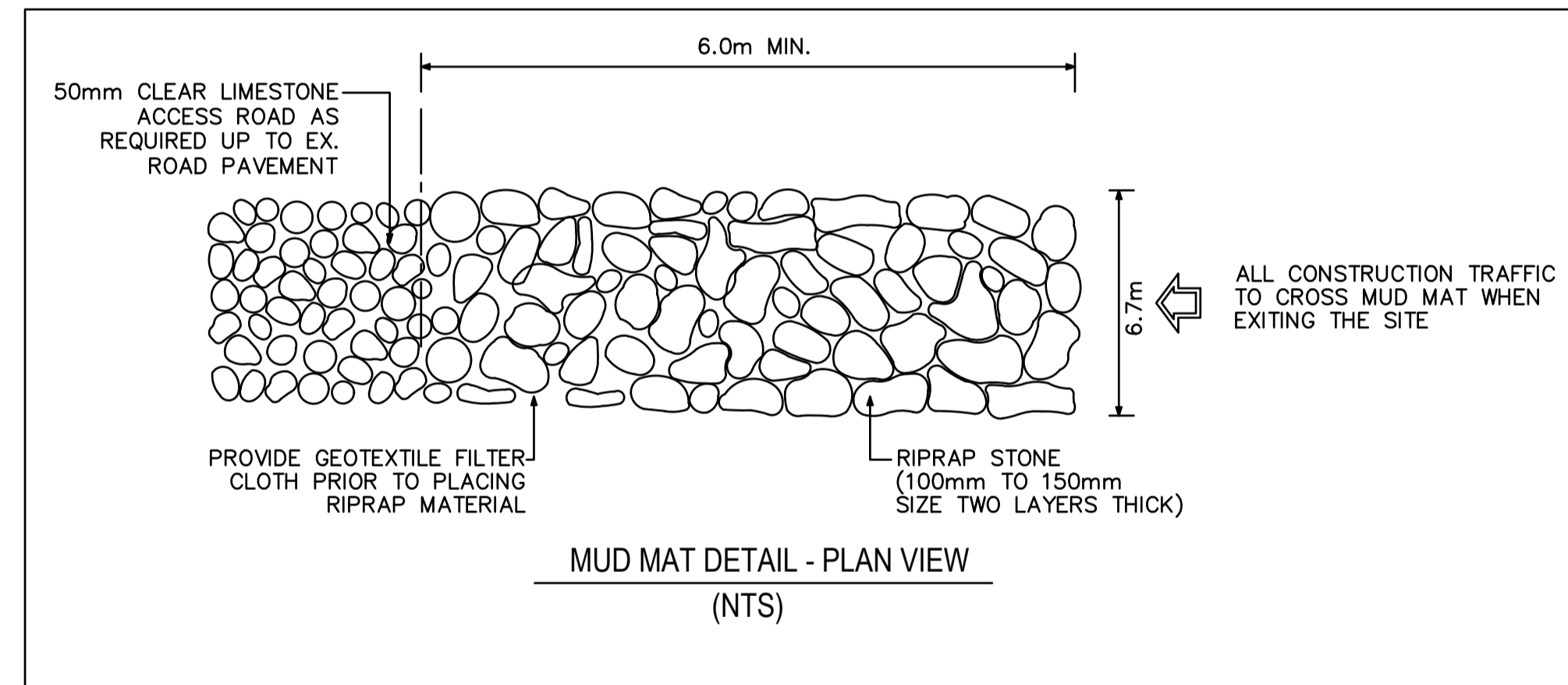
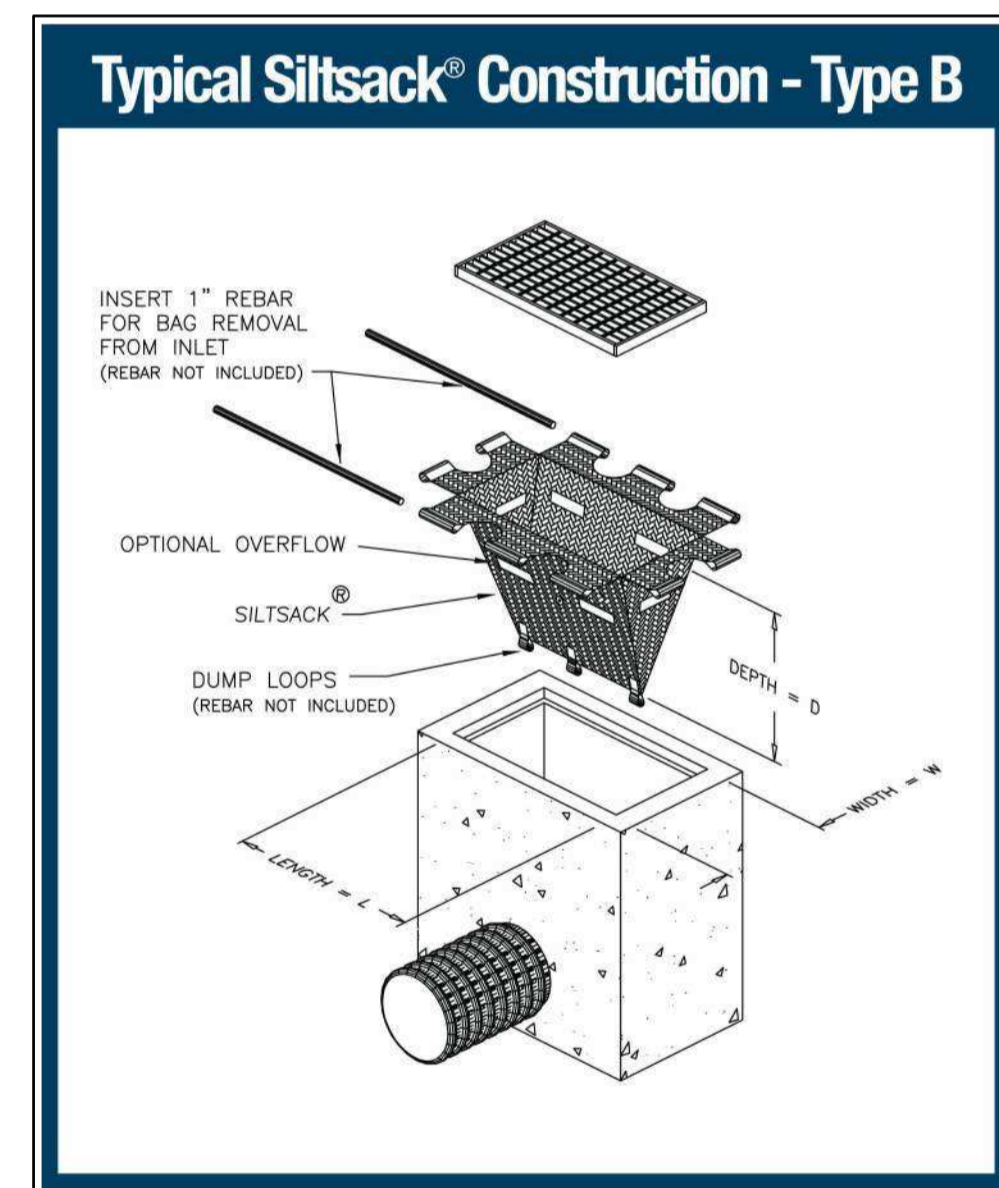
STATION	DESCRIPTION	FINISHED GRADE	TOP OF WATERMAIN	COVER
150mm WATERMAIN SERVICE FROM BUILDING TO RIVERSIDE DRIVE				
1+000	PROPOSED 150mm CAP	81.25	78.850	2.40
1+002.40	150mm VB	81.04	78.640	2.40
1+011.35	150x150x150 mm Tee	81.04	78.640	2.40
1+033.54	11.25° Bend	81.40	79.000	2.40
1+054.35	DMA CHAMBER	80.88	78.480	2.40
1+061.85	Connect to Ex. 305mm W/M WITH 150x300mm Tee	80.64	78.240	2.40

150mm WATERMAIN EXTENSION FROM EXISTING PRIVATE MAIN				
2+011.35	150x150 mm Tee	81.04	78.640	2.40
2+012.80	150mm VB	81.04	78.640	2.40
2+025.37	11.25° Bend	81.06	78.660	2.40
2+032.09	Crossing with 250mm PVC STM	80.98	78.580	2.40
2+042.20	11.25° Bend	80.94	78.540	2.40
2+055.33	150mm VB	81.05	78.650	2.40
2+056.70	CONNECT TO Ex. 150mm W/M WITH 150x150mm Tee	81.13	78.730	2.40

STRUCTURE ID	TOP OF GRATE ELEVATION	INVERT			DESCRIPTION			
		INLET	INLET	OUTLET	SIZE	OPSD	COVER	
SANMH310	80.55			78.783	78.753	1200mm DIA.	OPSD-701.010	S24

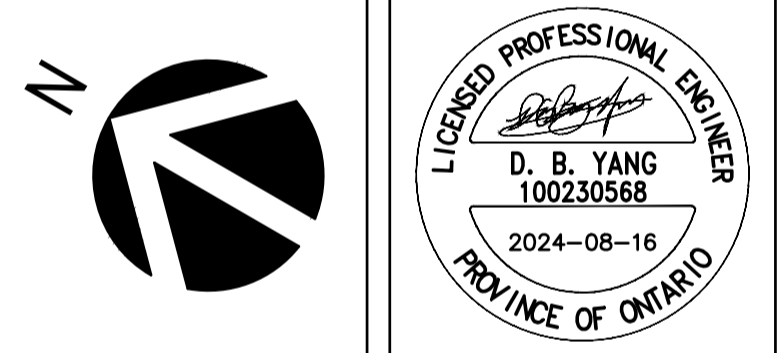
ID	Type	Obvert		Invert		Clearance	Notes	
		Obvert	Invert	Obvert	Invert			
1	250mmØ PVC SAN	78.910	78.660	0.500	Clearance Above	78.160	77.810	EX.350mmØ PVC W/M
2	250mmØ PVC STM	79.882	79.632	1.242	Clearance Above	78.390	78.240	150mmØ PVC W/M
3	250mmØ PVC STM	78.144	77.894	0.634	Clearance Under	79.078	78.778	EX.300mmØ PVC W/M
4	250mmØ PVC STM	78.120	77.870	0.210	Clearance Under	78.480	78.330	200mmØ PVC W/M

*Note: Provide Concrete Encased for corssing clearance less than 0.30m



WSP CANADA INC.
2611 QUEENVIEW DRIVE, SUITE 300
OTTAWA, ONTARIO
CANADA K2B 8K2
PHONE: 613-829-2800
WWW.WSP.COM

DISCLAIMER: THIS DRAWING AND DESIGN IS COPYRIGHT PROTECTED WHICH SHALL NOT BE USED, REPRODUCED OR REVISED WITHOUT WRITTEN PERMISSION BY WSP. THE CONTRACTOR SHALL CHECK AND VERIFY ALL DIMENSIONS AND UTILITY LOCATIONS AND REPORT ALL ERRORS AND OMISSIONS PRIOR TO COMMENCING WORK.



EDWARD J. CUHACI & ASSOCIATES ARCHITECTS Inc.
171 Slater St, Suite 100, Ottawa, Ontario, K1P 5H7
Fax: (613) 236-1944 Telephone: (613) 236-7135 E-mail: info@cuhaci.com

PROJECT TITLE/TITRE DU PROJET
**ST. PATRICK'S HOME
NEW SENIOR APARTMENT BUILDING**
2865 RIVERSIDE DR #226
OTTAWA, ONTARIO K1V 8N5

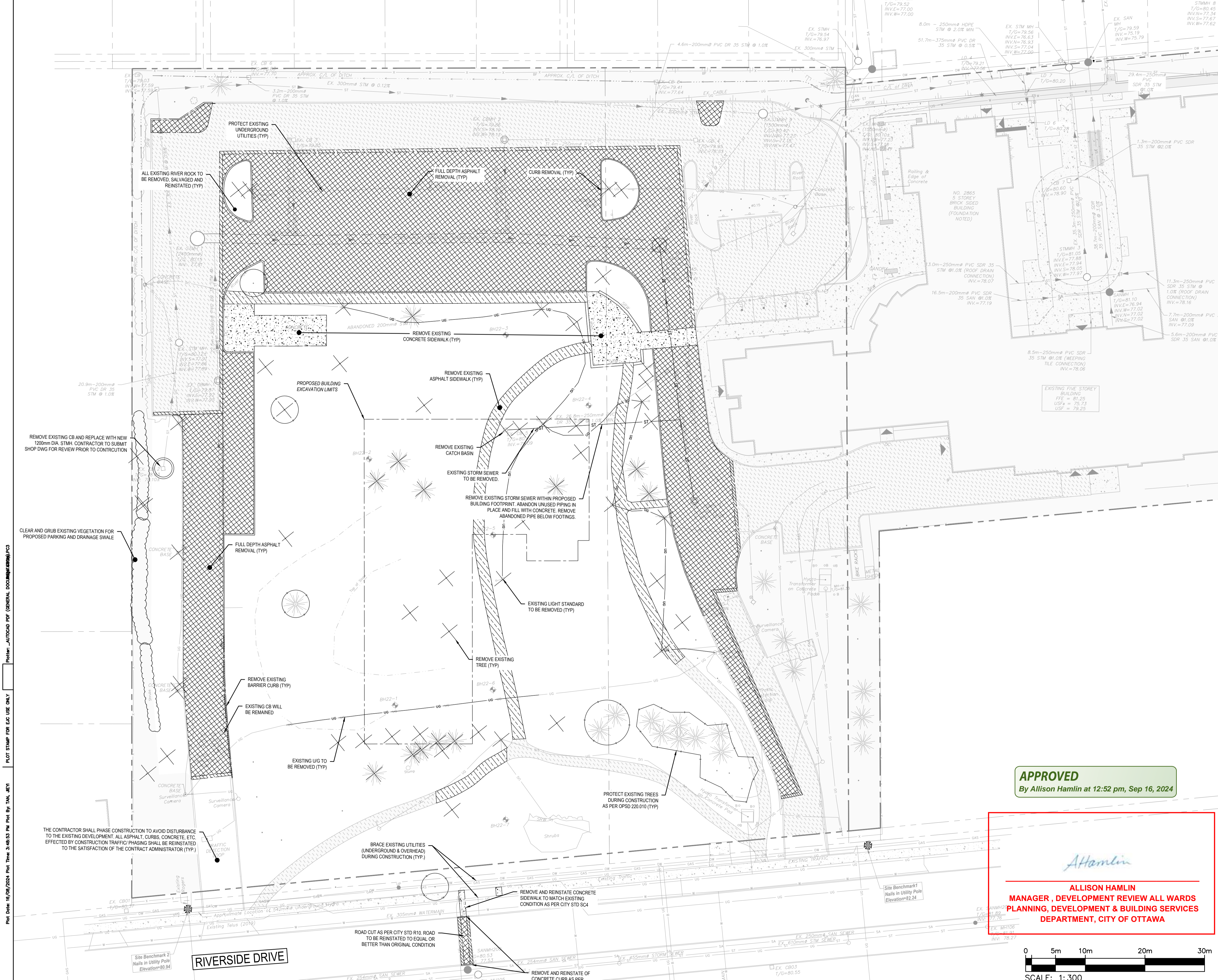
DRAWING TITLE/TITRE DU DESSIN

DETAILS

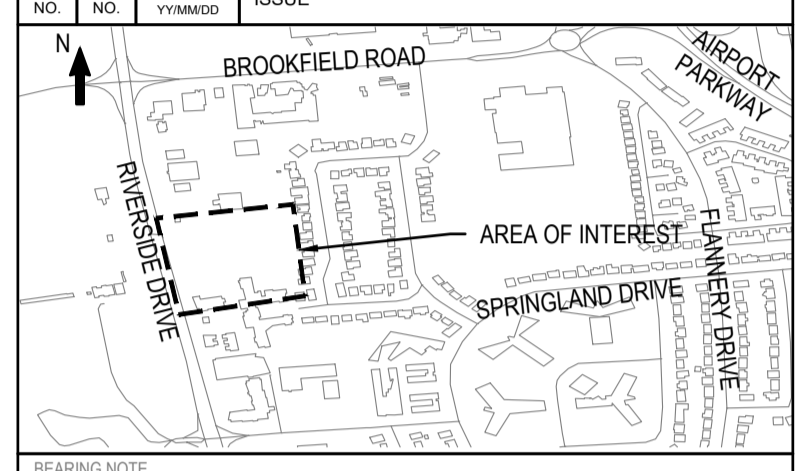
SCALE ECHELLE	AS SHOWN	PROJ. No 221-08396-00	ISSUE No 6	REV. No 0
DRAWN BY DESSINE PAR	JT	DRAWING/DESSIN		
CHECKED BY VERIFIE PAR	DY	C1		
DATE	AUGUST 2024			

APPROVED
By Allison Hamlin at 12:53 pm, Sep 16, 2024

A Hamlin
ALLISON HAMLIN
MANAGER, DEVELOPMENT REVIEW ALL WARDS
PLANNING, DEVELOPMENT & BUILDING SERVICES
DEPARTMENT, CITY OF OTTAWA



7	24/08/16	REVISED AS PER SPECIFIC COMMENT
6	24/07/26	RE-ISSUED FOR FINAL SITE PLAN CONTROL
5	24/07/08	ISSUED FOR FINAL SITE PLAN CONTROL
4	24/04/26	RESUBMISSION FOR SPC PH 3 PRE-CONSULTATION
3	24/04/15	RESUBMISSION FOR SPC PH 3 PRE-CONSULTATION
2	24/01/23	ISSUED FOR SITE PLAN CONTROL REVIEW
1	23/09/30	ISSUED FOR COSTING
0	22/10/07	ISSUED FOR CONCEPT DESIGN

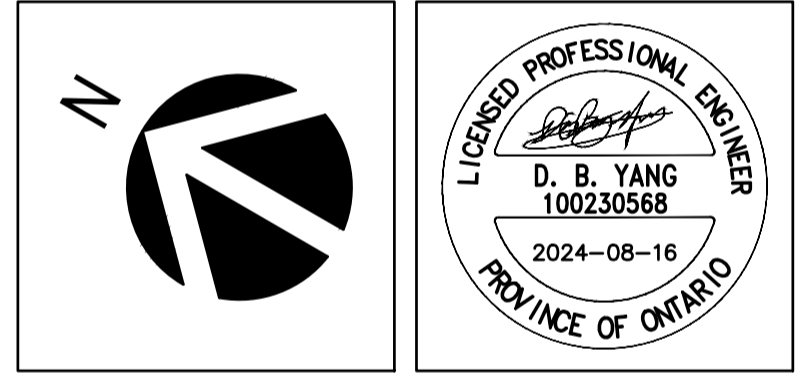


BEARING NOTE
 BEARING ARE GRID DERIVED FROM THE CANMET IRS NETWORK OBSERVATIONS ON NAD83 HORIZONTAL CONTROL MONUMENTS 1975355 AND 1980951, CENTRAL MERIDIAN, 75°30' WEST LONGITUDE NTM ZONE 18 NAD83 (ORIGINAL).
 SITE BENCHMARK 1: N 5208165 730 E 38047 808 ELEVATION=82.24
 SITE BENCHMARK 2: N 5208167 871 E 38024 588 ELEVATION=81.94



WSP CANADA INC.
 2611 QUEENSWAY DRIVE, SUITE 300
 OTTAWA, ONTARIO
 CANADA K2B 8K2
 PHONE: 613-829-2800
 WWW.WSP.COM

DISCLAIMER: THIS DRAWING AND DESIGN IS COPYRIGHT PROTECTED WHICH SHALL NOT BE USED, REPRODUCED OR REVISED WITHOUT WRITTEN PERMISSION BY WSP. THE CONTRACTOR SHALL CHECK AND VERIFY ALL DIMENSIONS AND UTILITY LOCATIONS AND REPORT ALL ERRORS AND OMISSIONS PRIOR TO COMMENCING WORK.



EDWARD J. CUHACI & ASSOCIATES ARCHITECTS Inc.
 171 Slater St, Suite 100, Ottawa, Ontario, K1P 5H7
 Fax: (613) 236-1944 Telephone: (613) 236-7135 E-mail: info@cuhaci.com

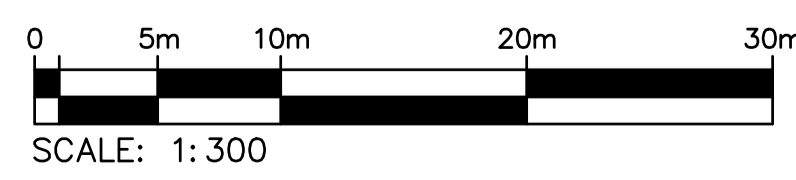
PROJECT TITLE/TITRE DU PROJET
**ST. PATRICK'S HOME
 NEW SENIOR APARTMENT BUILDING**
 2865 RIVERSIDE DR.#226
 OTTAWA, ONTARIO K1V 8N5

DRAWING TITLE/TITRE DU DESSIN
REMOVAL PLAN

SCALE	ECHELLE	1:300	PROJ. No	221-08396-00	ISSUE No	6	REV. No	0
DRAWN BY	DESSEINE PAR	JT	DRAWING/DESSIN	C2				
CHECKED BY	VERIFIE PAR	DY	DATE	AUGUST 2024				ACAD FILE/FICHER:

APPROVED
 By Allison Hamlin at 12:52 pm, Sep 16, 2024

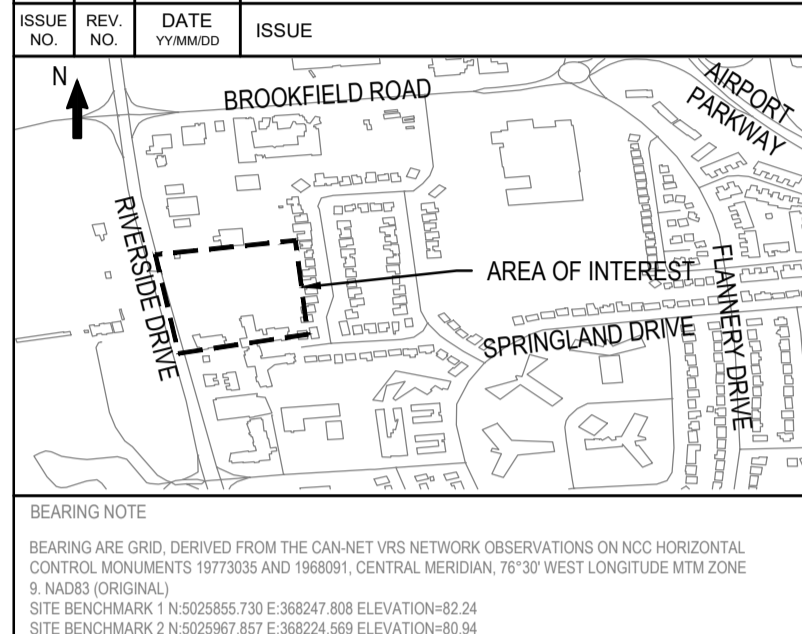
AHamlin
ALLISON HAMLIN
 MANAGER, DEVELOPMENT REVIEW ALL WARDS
 PLANNING, DEVELOPMENT & BUILDING SERVICES
 DEPARTMENT, CITY OF OTTAWA



Plot Date: 16/09/2024 Plot Time: 3:48:52 Plot By: HAN, JET1
 Plot Stamp For Use Only
 Path: J:\2024\09\16\2024-09-16-15-48-52\2024-09-16-15-48-52.dwg



7	24/08/16	REVISED AS PER SPECIFIC COMMENT
6	24/07/26	RE-ISSUED FOR FINAL SITE PLAN CONTROL
5	24/07/08	ISSUED FOR FINAL SITE PLAN CONTROL
4	24/04/26	RESUBMISSION FOR SPC PH 3 PRE-CONSULTATION
3	24/04/15	RESUBMISSION FOR SPC PH 3 PRE-CONSULTATION
2	24/01/23	ISSUED FOR SITE PLAN CONTROL REVIEW
1	23/08/30	ISSUED FOR COSTING
0	22/10/07	ISSUED FOR CONCEPT DESIGN

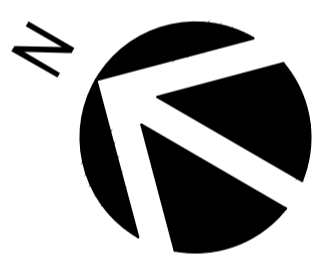


BEARING NOTE
BEARING ARE GRID, DERIVED FROM THE CAN NET VRS NETWORK OBSERVATIONS ON NCD HORIZONTAL CONTROL MONUMENTS 19170265 AND 198901. CENTRAL MERIDIAN, 79° 30' WEST LONGITUDE MTM ZONE 8 NAD83 (ORIGINAL).
SITE BENCHMARK 1 N 0205865 730 E 388247 808 ELEVATION=80.24
SITE BENCHMARK 2 N 0205967 857 E 38824 569 ELEVATION=80.94



WSP CANADA INC.
2611 QUEENSWAY DRIVE, SUITE 300
OTTAWA, ONTARIO
CANADA K2B 8K2
PHONE: 613-829-2800
WWW.WSP.COM

DISCLAIMER: THIS DRAWING AND DESIGN IS COPYRIGHT PROTECTED WHICH SHALL NOT BE USED, REPRODUCED OR REVISED WITHOUT WRITTEN PERMISSION BY WSP. THE CONTRACTOR SHALL CHECK AND VERIFY ALL DIMENSIONS AND UTILITY LOCATIONS AND REPORT ALL ERRORS AND OMISSIONS PRIOR TO COMMENCING WORK.

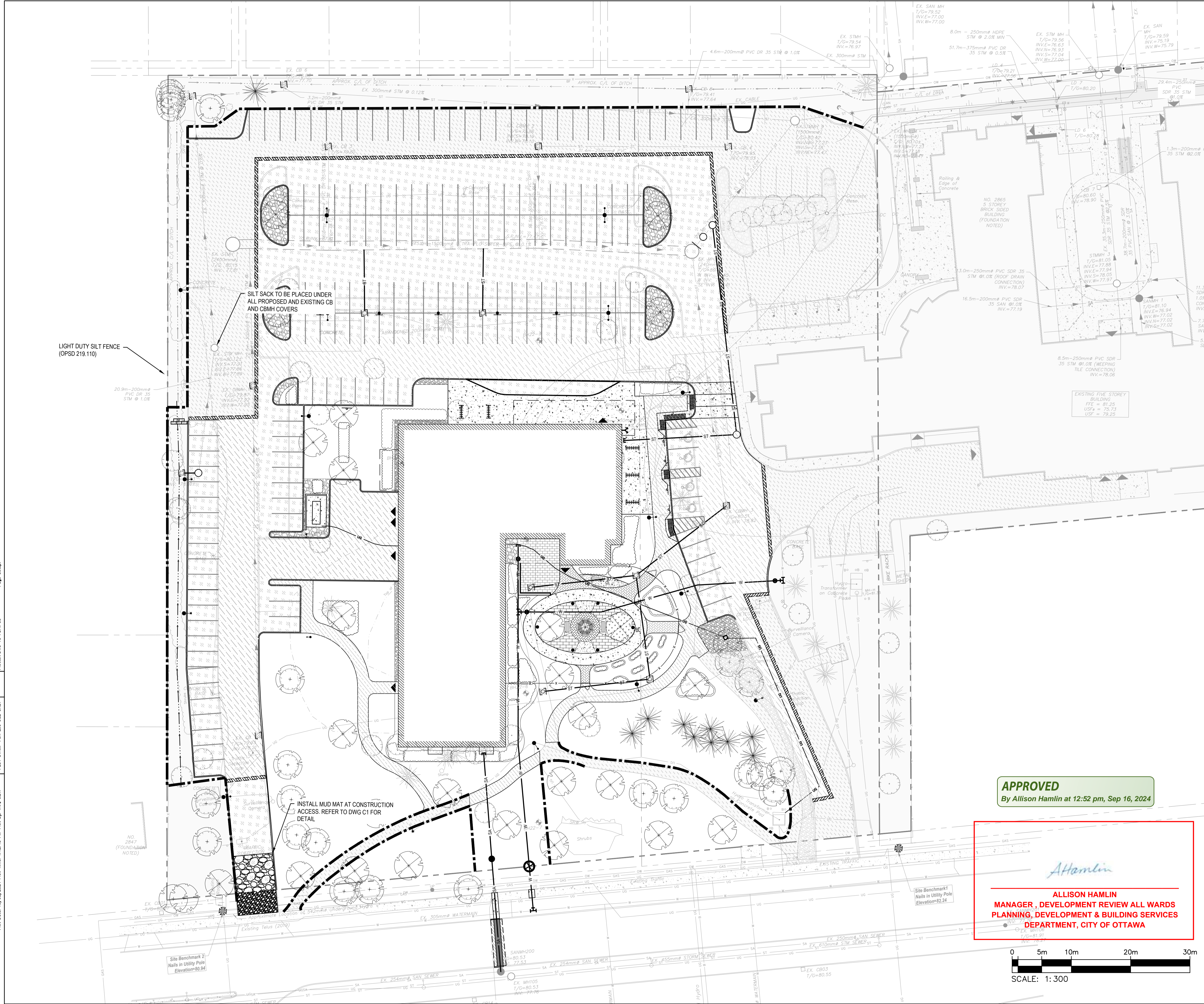


EDWARD J. CUHACI & ASSOCIATES ARCHITECTS Inc.
171 Slater St, Suite 100, Ottawa, Ontario, K1P 5H7
Fax: (613) 236-1944 Telephone: (613) 236-7135 E-mail: info@cuhaci.com

PROJECT TITLE/TITRE DU PROJET
**ST. PATRICK'S HOME
NEW SENIOR APARTMENT BUILDING**
2865 RIVERSIDE DR #226
OTTAWA, ONTARIO K1V 8N5

DRAWING TITLE/TITRE DU DESSIN
**SEDIMENT AND EROSION
CONTROL PLAN**

SCALE ECHELLE	1:300	PROJ. No 221-08396-00	ISSUE No 6	REV. No 0
DRAWN BY DESSINE PAR	JT	DRAWING/DESSIN		
CHECKED BY VERIFIE PAR	DY	C3		
DATE	AUGUST 2024	ACAD FILE/FICHER:		



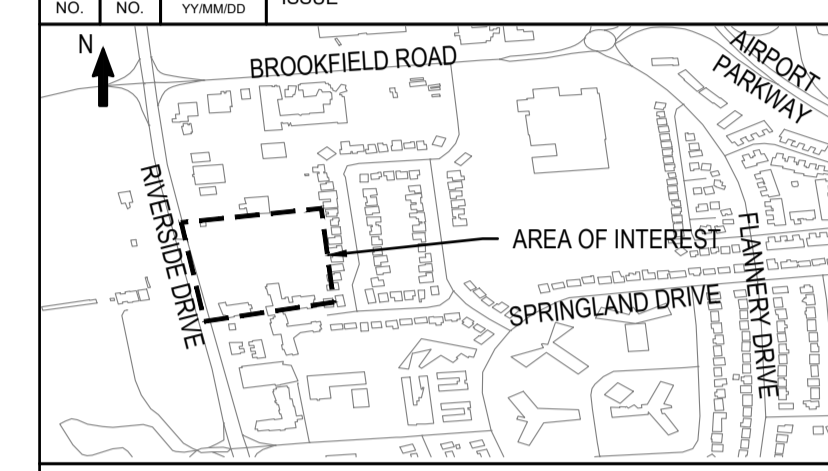
APPROVED
By Allison Hamlin at 12:52 pm, Sep 16, 2024

Allison Hamlin
**ALLISON HAMLIN
MANAGER, DEVELOPMENT REVIEW ALL WARDS
PLANNING, DEVELOPMENT & BUILDING SERVICES
DEPARTMENT, CITY OF OTTAWA**





7	24/08/16	REVISED AS PER SPECIFIC COMMENT
6	24/07/26	RE-ISSUED FOR FINAL SITE PLAN CONTROL
5	24/07/08	ISSUED FOR FINAL SITE PLAN CONTROL
4	24/04/26	RESUBMISSION FOR SPC PH 3 PRE-CONSULTATION
3	24/04/15	RESUBMISSION FOR SPC PH 3 PRE-CONSULTATION
2	24/01/23	ISSUED FOR SITE PLAN CONTROL REVIEW
1	23/08/30	ISSUED FOR COSTING
0	22/10/07	ISSUED FOR CONCEPT DESIGN



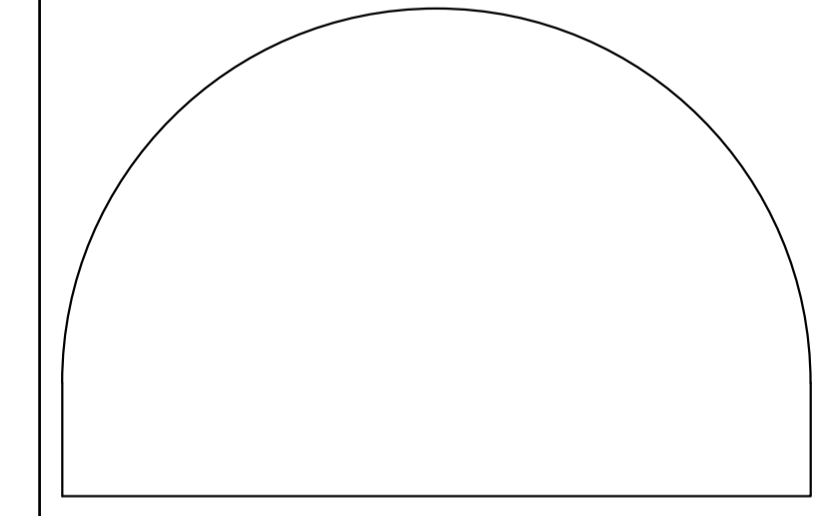
BEARING NOTE
BEARING ARE GRID, DERIVED FROM THE CAN NET VRS NETWORK OBSERVATIONS ON NCD HORIZONTAL CONTROL MONUMENTS 1917036 AND 198901. CENTRAL MERIDIAN, 79° 07' WEST LONGITUDE WTM ZONE 8 NAD83 (ORIGINAL).
SITE BENCHMARK 1 N 5025865 730 E 38837 808 ELEVATION=82.24
SITE BENCHMARK 2 N 5025967 857 E 38824 589 ELEVATION=80.94

wsp

WSP CANADA INC.
2611 QUEENSWAY DRIVE, SUITE 300
OTTAWA, ONTARIO
CANADA K2B 8K2
PHONE: 613-829-2800
WWW.WSP.COM

DISCLAIMER: THIS DRAWING AND DESIGN IS COPYRIGHT PROTECTED WHICH SHALL NOT BE USED, REPRODUCED OR REVISED WITHOUT WRITTEN PERMISSION BY WSP. THE CONTRACTOR SHALL CHECK AND VERIFY ALL DIMENSIONS AND UTILITY LOCATIONS AND REPORT ALL ERRORS AND OMISSIONS PRIOR TO COMMENCING WORK.

PROFESSIONAL ENGINEER
D. B. YANG
100230568
2024-08-16
PROVINCE OF ONTARIO



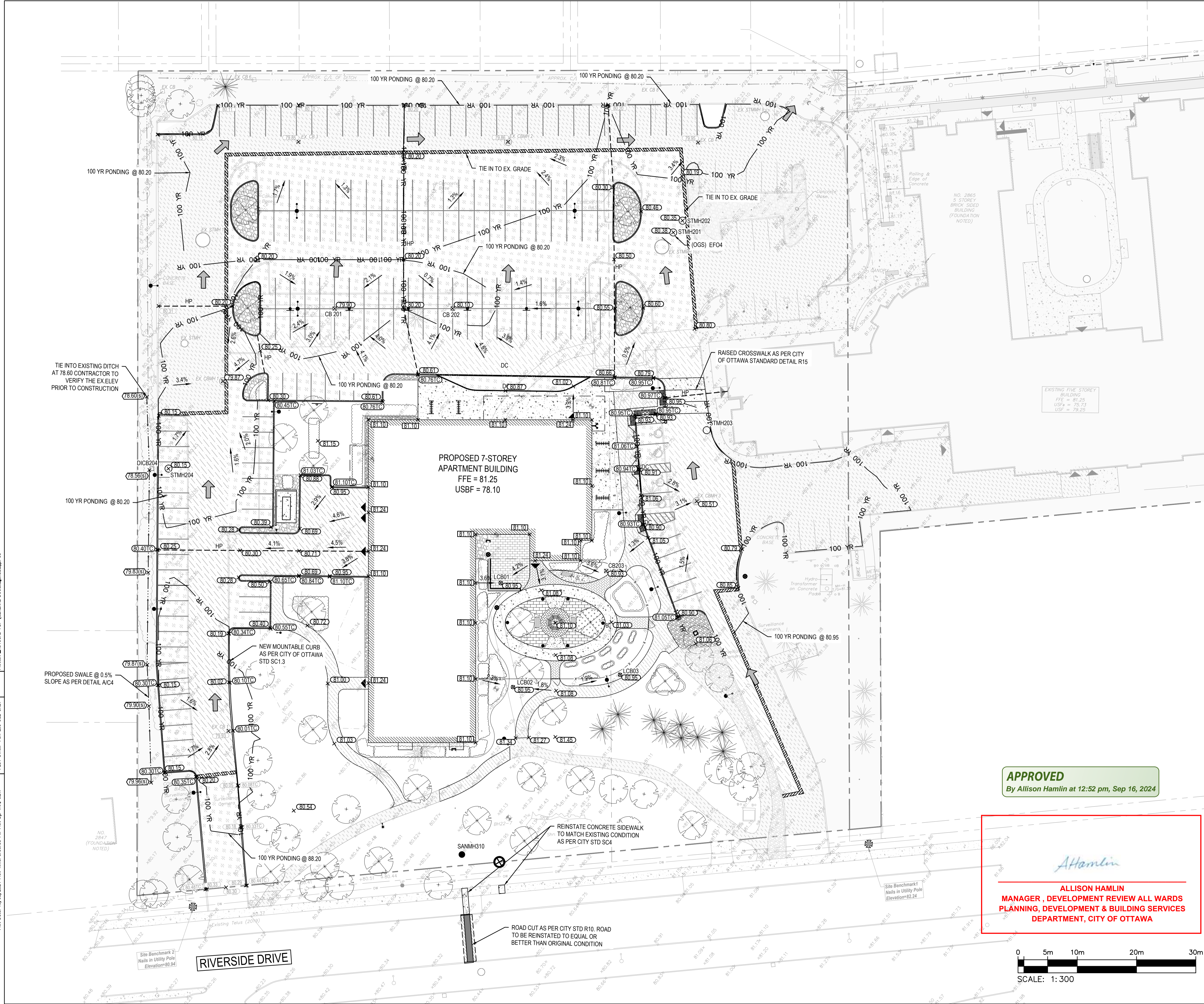
EDWARD J. CUHACI & ASSOCIATES ARCHITECTS Inc.
171 Slater St., Suite 100, Ottawa, Ontario, K1P 5H7
Fax: (613) 236-1944 Telephone: (613) 236-7135 E-mail: info@cuhaci.com

PROJECT/TITRE DU PROJET
**ST. PATRICK'S HOME
NEW SENIOR APARTMENT BUILDING**

2865 RIVERSIDE DR.#226
OTTAWA, ONTARIO K1V 8N5

DRAWING/TITRE DU DESSIN
GRADING PLAN

SCALE ECHELLE	1:300	PROJ. No 221-08396-00	ISSUE No 6	REV. No 0
DRAWN BY DESSINE PAR	JT	DRAWING/DESSIN		
CHECKED BY VERIFIE PAR	DY	C4		
DATE	AUGUST 2024	ACAD FILE/FICHER:		

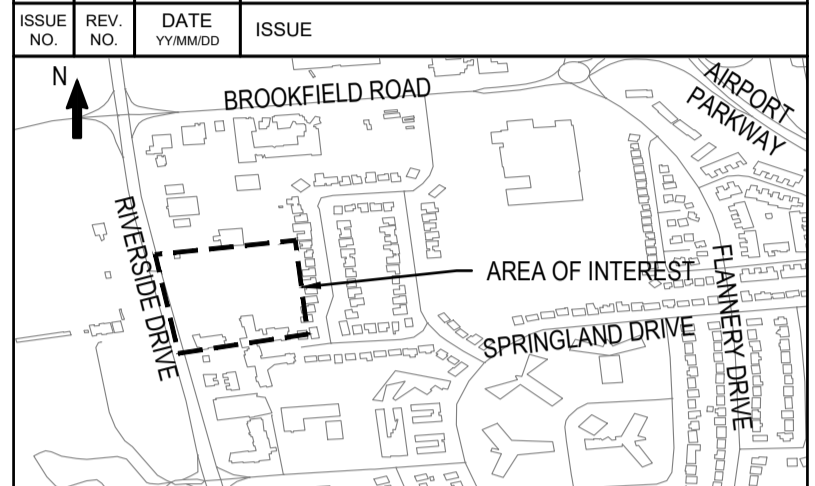


Plot Date: 19/08/2024 Plot Time: 2:06:35 PM Plot By: TAN, AET1 Plot Stamp For E&P Use Only Pender: _AUTOLOAD PDF (GENERAL_DOCUMENT)\$.PC3

D07-12-24-0064



7	24/08/16	REVISED AS PER SPECIFIC COMMENT
6	24/07/26	RE-ISSUED FOR FINAL SITE PLAN CONTROL
5	24/07/08	ISSUED FOR FINAL SITE PLAN CONTROL
4	24/04/26	RESUBMISSION FOR SPC PH 3 PRE-CONSULTATION
3	24/04/15	RESUBMISSION FOR SPC PH 3 PRE-CONSULTATION
2	24/01/23	ISSUED FOR SITE PLAN CONTROL REVIEW
1	23/08/30	ISSUED FOR COSTING
0	22/10/07	ISSUED FOR CONCEPT DESIGN

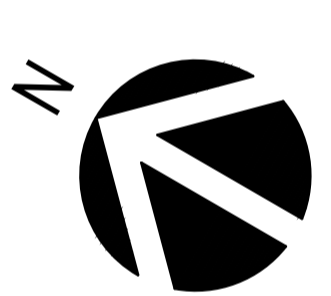


BEARING NOTE
 BEARING ARE GRID, DERIVED FROM THE CAN NET VRS NETWORK OBSERVATIONS ON NCD HORIZONTAL CONTROL MONUMENTS 1917026 AND 198091. CENTRAL MERIDIAN, 79° 30' WEST LONGITUDE MERIDIAN 8 NAD83 (ORIGINAL).
 SITE BENCHMARK 1 N 502585 730 E 38847 808 ELEVATION=83.24
 SITE BENCHMARK 2 N 502587 857 E 38824 589 ELEVATION=83.94



WSP CANADA INC.
 2611 QUEENSWAY DRIVE, SUITE 300
 OTTAWA, ONTARIO
 CANADA K2B 8K2
 PHONE: 613-829-2800
 WWW.WSP.COM

DISCLAIMER: THIS DRAWING AND DESIGN IS COPYRIGHT PROTECTED WHICH SHALL NOT BE USED, REPRODUCED OR REVISED WITHOUT WRITTEN PERMISSION BY WSP. THE CONTRACTOR SHALL CHECK AND VERIFY ALL DIMENSIONS AND UTILITY LOCATIONS AND REPORT ALL ERRORS AND OMISSIONS PRIOR TO COMMENCING WORK.

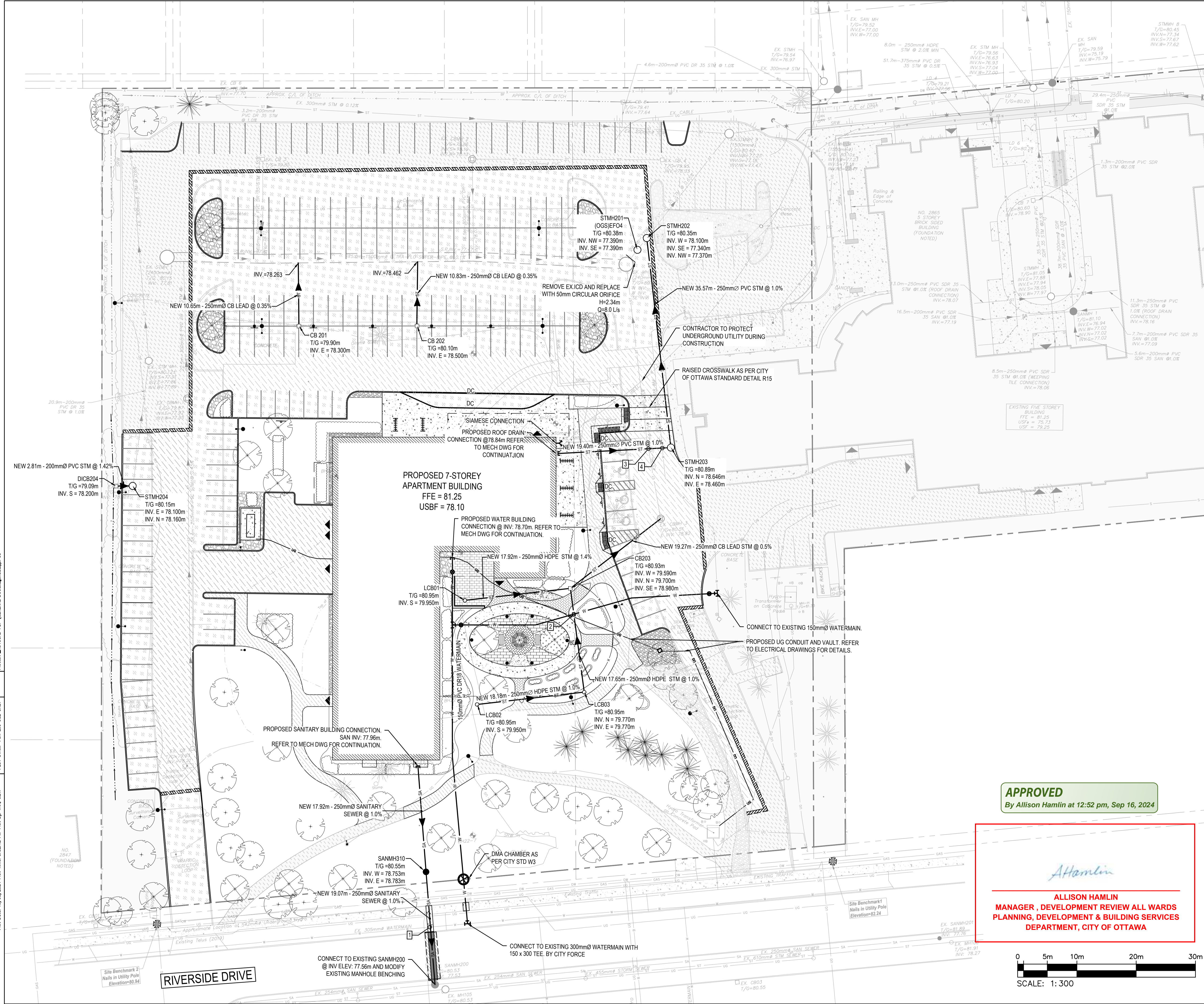


EDWARD J. CUHACI
 & ASSOCIATES ARCHITECTS Inc.
 171 Slater St, Suite 100, Ottawa, Ontario, K1P 5H7
 Fax: (613) 236-1944 Telephone: (613) 236-7135 E-mail: info@cuhacim.com

PROJECT/TITRE DU PROJET
ST. PATRICK'S HOME
NEW SENIOR APARTMENT BUILDING
 2865 RIVERSIDE DR.#226
 OTTAWA, ONTARIO K1V 8N5

DRAWING/TITRE DU DESSIN
SERVICING PLAN

SCALE	1:300	PROJ. No	221-08396-00	ISSUE No	6	REV. No	0
DRAWN BY	DESSINE PAR	JT	DRAWING/DESSIN				C5
CHECKED BY	VERIFIE PAR	DY					
DATE	AUGUST 2024	ACAD FILE/FICHIER:					



APPROVED
 By Allison Hamlin at 12:52 pm, Sep 16, 2024

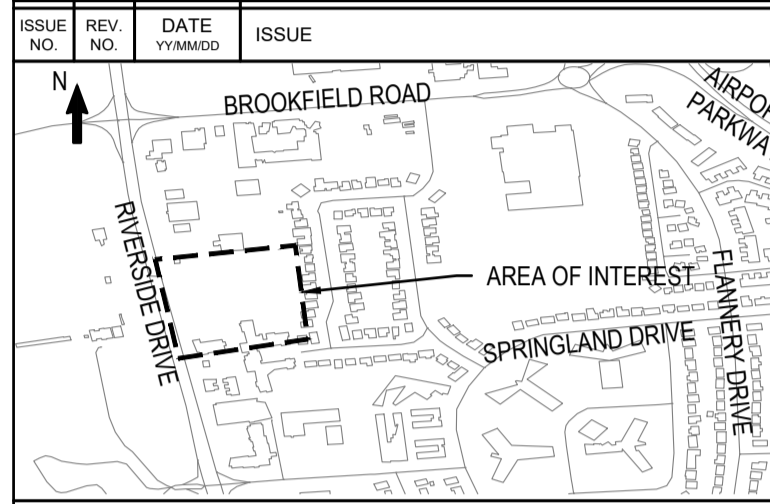
Allison Hamlin
ALLISON HAMLIN
 MANAGER, DEVELOPMENT REVIEW ALL WARDS
 PLANNING, DEVELOPMENT & BUILDING SERVICES
 DEPARTMENT, CITY OF OTTAWA



Plot Date: 19/08/2024 Plot Time: 3:26:12 PM Plot By: TAN, JBT
 PLOT STAMP FOR E&P USE ONLY
 Pictur: _AUTOLOAD PDF (GENERAL DOCUMENT) P&C

D07-12-24-0064

6	24/07/26	RE-ISSUED FOR FINAL SITE PLAN CONTROL
5	24/07/08	ISSUED FOR FINAL SITE PLAN CONTROL
4	24/04/26	RESUBMISSION FOR SPC PH 3 PRE-CONSULTATION
3	24/04/15	RESUBMISSION FOR SPC PH 3 PRE-CONSULTATION
2	24/01/23	ISSUED FOR SITE PLAN CONTROL REVIEW
1	23/08/30	ISSUED FOR COSTING
0	22/10/07	ISSUED FOR CONCEPT DESIGN

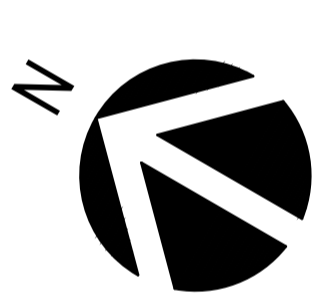


BEARING NOTE
 BEARING ARE GRID, DERIVED FROM THE CAN NET VRS NETWORK OBSERVATIONS ON NCD HORIZONTAL CONTROL MONUMENTS 197305 AND 198091. CENTRAL MERIDIAN: 79°30' WEST. LONGITUDE MTM ZONE 8. NADES (ORIGINAL).
 SITE BENCHMARK 1 N 502585 730 E 388347 808 ELEVATION=80.24
 SITE BENCHMARK 2 N 502587 857 E 388224 589 ELEVATION=80.94



WSP CANADA INC.
 2611 QUEENSWAY DRIVE, SUITE 300
 OTTAWA, ONTARIO
 CANADA K2B 8K2
 PHONE: 613-829-2800
 WWW.WSP.COM

DISCLAIMER: THIS DRAWING AND DESIGN IS COPYRIGHT PROTECTED WHICH SHALL NOT BE USED, REPRODUCED OR REVISED WITHOUT WRITTEN PERMISSION BY WSP. THE CONTRACTOR SHALL CHECK AND VERIFY ALL DIMENSIONS AND UTILITY LOCATIONS AND REPORT ALL ERRORS AND OMISSIONS PRIOR TO COMMENCING WORK.

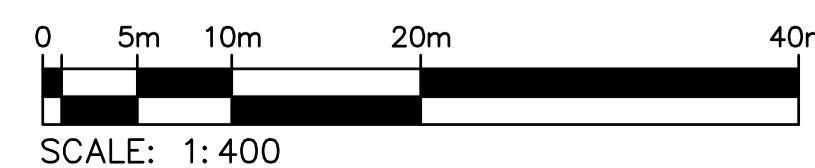


APPROVED
 By Allison Hamlin at 12:52 pm, Sep 16, 2024

Allison Hamlin
ALLISON HAMLIN
 MANAGER, DEVELOPMENT REVIEW ALL WARDS
 PLANNING, DEVELOPMENT & BUILDING SERVICES
 DEPARTMENT, CITY OF OTTAWA

PRE-DEVELOPMENT LEGEND:

- DRAINAGE BOUNDARY LINE
- DRAINAGE AREA SYMBOL
- EXISTING OVER FLOW DIRECTION



EDWARD J. CUHACI
 & ASSOCIATES ARCHITECTS Inc.
 171 Slater St., Suite 100, Ottawa, Ontario, K1P 5H7
 Fax: (613) 236-1944 Telephone: (613) 236-7135 E-mail: info@cuhacim.com

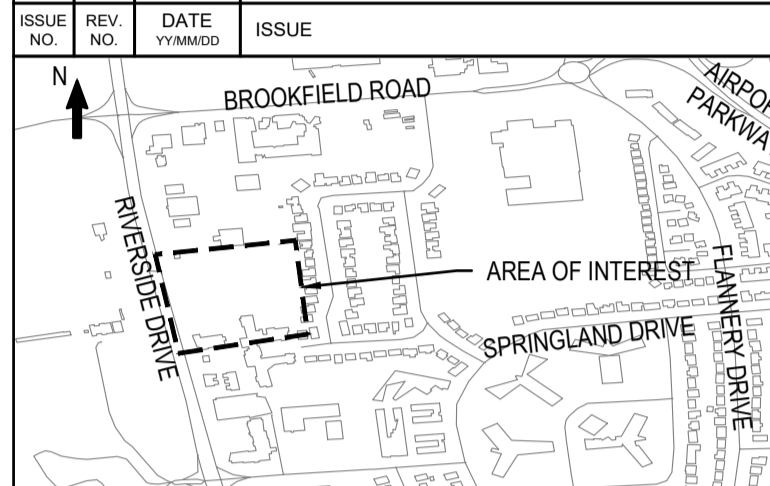
PROJECT TITLE/TITRE DU PROJET
ST. PATRICK'S HOME
NEW SENIOR APARTMENT BUILDING
 2865 RIVERSIDE DR.#226
 OTTAWA, ONTARIO K1V 8N5

DRAWING TITLE/TITRE DU DESSIN
PRE-DEVELOPMENT
DRAINAGE AREA PLAN

SCALE ECHELLE	1:400	PROJ. No 221-08396-00	ISSUE No 6	REV. No 0
DRAWN BY DESSINE PAR	JT	DRAWING/DESSIN		
CHECKED BY VERIFIE PAR	DY	C8		
DATE	JULY 2024			
ACAD FILE/FICHER:				



6	24/07/26	RE-ISSUED FOR FINAL SITE PLAN CONTROL
5	24/07/08	ISSUED FOR FINAL SITE PLAN CONTROL
4	24/04/26	RESUBMISSION FOR SPC PH 3 PRE-CONSULTATION
3	24/04/15	RESUBMISSION FOR SPC PH 3 PRE-CONSULTATION
2	24/01/23	ISSUED FOR SITE PLAN CONTROL REVIEW
1	23/08/20	ISSUED FOR COSTING
0	22/10/07	ISSUED FOR CONCEPT DESIGN

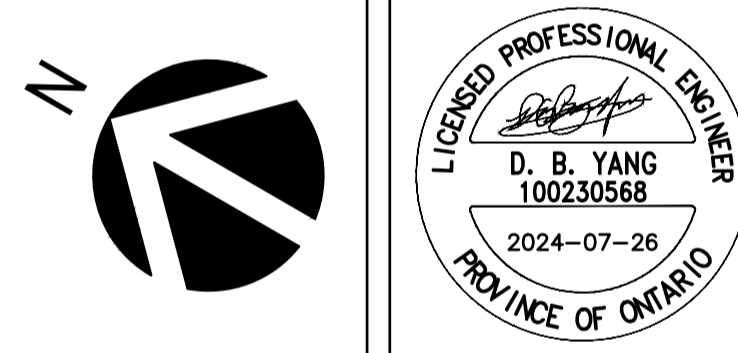


BEARING NOTE
 BEARING ARE GRID, DERIVED FROM THE CAN NET VRS NETWORK OBSERVATIONS ON NCD-HORIZONTAL CONTROL MONUMENTS 1917205 AND 198921. CENTRAL MERIDIAN: 79°30' WEST LONGITUDE WTM ZONE 8 NAD83 (ORIGINAL).
 SITE BENCHMARK 1 N 502585 730 E 388347 808 ELEVATION=80.24
 SITE BENCHMARK 2 N 502587 857 E 388204 589 ELEVATION=80.94



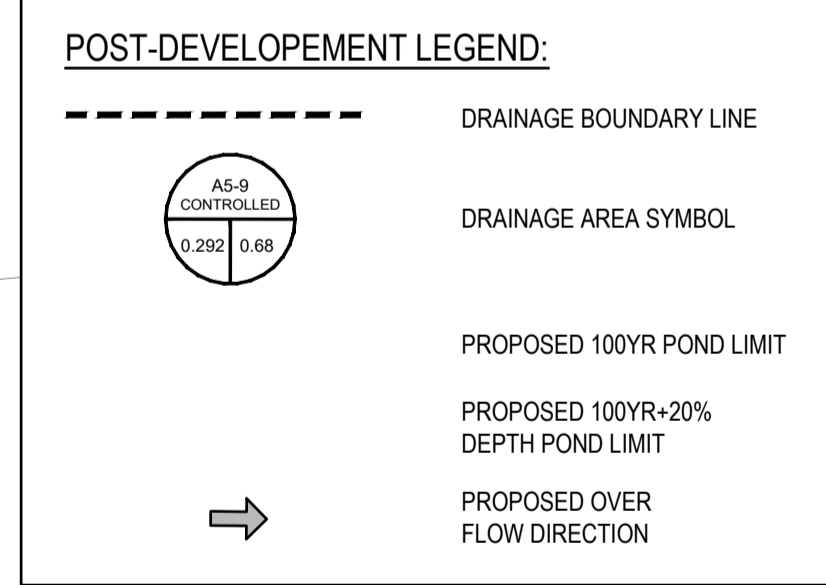
WSP CANADA INC.
 2611 QUEENSWAY DRIVE, SUITE 300
 OTTAWA, ONTARIO
 CANADA K2B 8K2
 PHONE: 613-829-2800
 WWW.WSP.COM

DISCLAIMER: THIS DRAWING AND DESIGN IS COPYRIGHT PROTECTED WHICH SHALL NOT BE USED, REPRODUCED OR REVISED WITHOUT WRITTEN PERMISSION BY WSP. THE CONTRACTOR SHALL CHECK AND VERIFY ALL DIMENSIONS AND UTILITY LOCATIONS AND REPORT ALL ERRORS AND OMISSIONS PRIOR TO COMMENCING WORK.

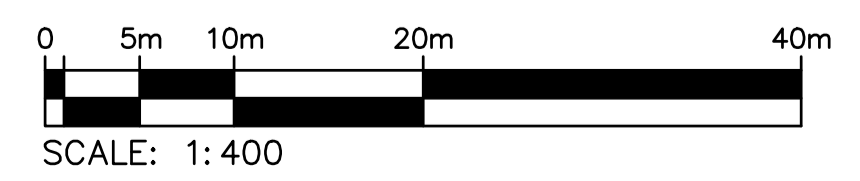
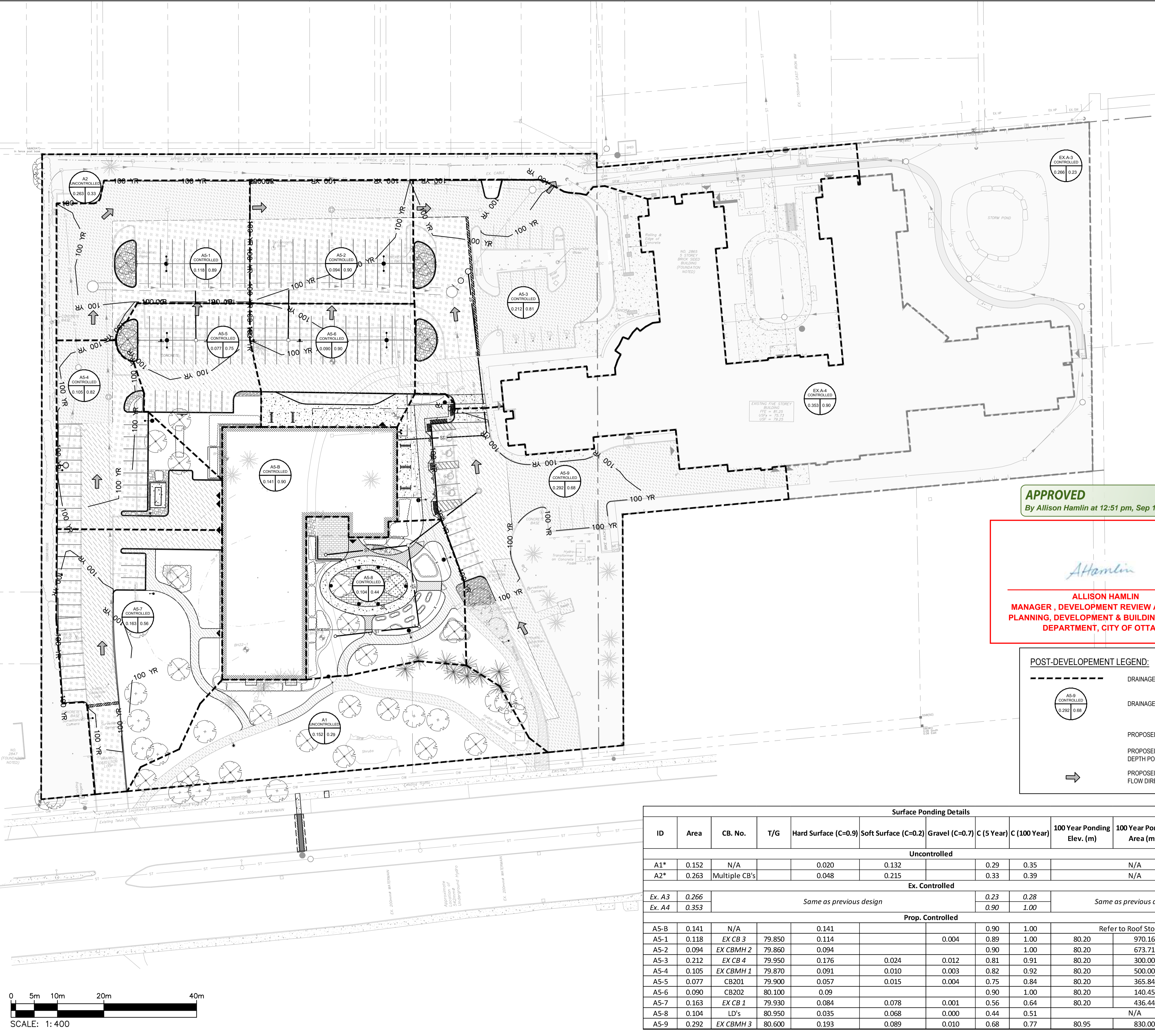


APPROVED
 By Allison Hamlin at 12:51 pm, Sep 16, 2024

Allison Hamlin
ALLISON HAMLIN
 MANAGER, DEVELOPMENT REVIEW ALL WARDS
 PLANNING, DEVELOPMENT & BUILDING SERVICES
 DEPARTMENT, CITY OF OTTAWA



Surface Ponding Details												
ID	Area	CB. No.	T/G	Hard Surface (C=0.9)	Soft Surface (C=0.2)	Gravel (C=0.7)	C (5 Year)	C (100 Year)	100 Year Ponding Elev. (m)	100 Year Ponding Area (m ²)	100 Year Storage (m ³)	
Uncontrolled												
A1*	0.152	N/A		0.020	0.132		0.29	0.35		N/A		
A2*	0.263	Multiple CB's		0.048	0.215		0.33	0.39		N/A		
Ex. Controlled												
Ex. A3	0.266	Same as previous design					0.23	0.28	Same as previous design			
Ex. A4	0.353						0.90	1.00				
Prop. Controlled												
A5-B	0.141	N/A		0.141			0.90	1.00	Refer to Roof Storage			
A5-1	0.118	EX CB 3	79.850	0.114		0.004	0.89	1.00	80.20	970.16	113.00	
A5-2	0.094	EX CBMH 2	79.860	0.094			0.90	1.00	80.20	673.71	76.00	
A5-3	0.212	EX CB 4	79.950	0.176	0.024	0.012	0.81	0.91	80.20	300.00	25.00	
A5-4	0.105	EX CBMH 1	79.870	0.091	0.010	0.003	0.82	0.92	80.20	500.00	55.00	
A5-5	0.077	CB201	79.900	0.057	0.015	0.004	0.75	0.84	80.20	365.84	37.00	
A5-6	0.090	CB202	80.100	0.09			0.90	1.00	80.20	140.45	9.00	
A5-7	0.163	EX CB 1	79.930	0.084	0.078	0.001	0.56	0.64	80.20	436.44	39.00	
A5-8	0.104	LD's	80.950	0.035	0.068	0.000	0.44	0.51	N/A			
A5-9	0.292	EX CBMH 3	80.600	0.193	0.089	0.010	0.68	0.77	80.95	830.00	100	



EDWARD J. CUHACI & ASSOCIATES ARCHITECTS Inc.
 171 Slater St, Suite 100, Ottawa, Ontario, K1P 5H7
 Fax: (613) 236-1944 Telephone: (613) 236-7135 E-mail: info@cuhaci.com

PROJECT/TITRE DU PROJET
ST. PATRICK'S HOME
NEW SENIOR APARTMENT BUILDING
 2865 RIVERSIDE DR #226
 OTTAWA, ONTARIO K1V 8N5

DRAWING/TITRE DU DESSIN
POST-DEVELOPMENT
DRAINAGE AREA PLAN

SCALE ECHELLE	1:400	PROJ. No. 221-08396-00	ISSUE No. 6	REV. No. 0
DRAWN BY DESSINE PAR	JT	DRAWING/DESSIN		
CHECKED BY VERIFIE PAR	DY	C9		
DATE	JULY 2024	ACAD FILE/FICHER:		

Plot Date: 25/07/2024 Plot Time: 5:35:07 PM Plot By: TAN, JENI
 Plot Stamp For E&P Use Only
 Path: J:\PROJECTS\2024\221-08396-00\GENERAL_DOCUMENTS\221-08396-00.dwg

D07-12-24-0064