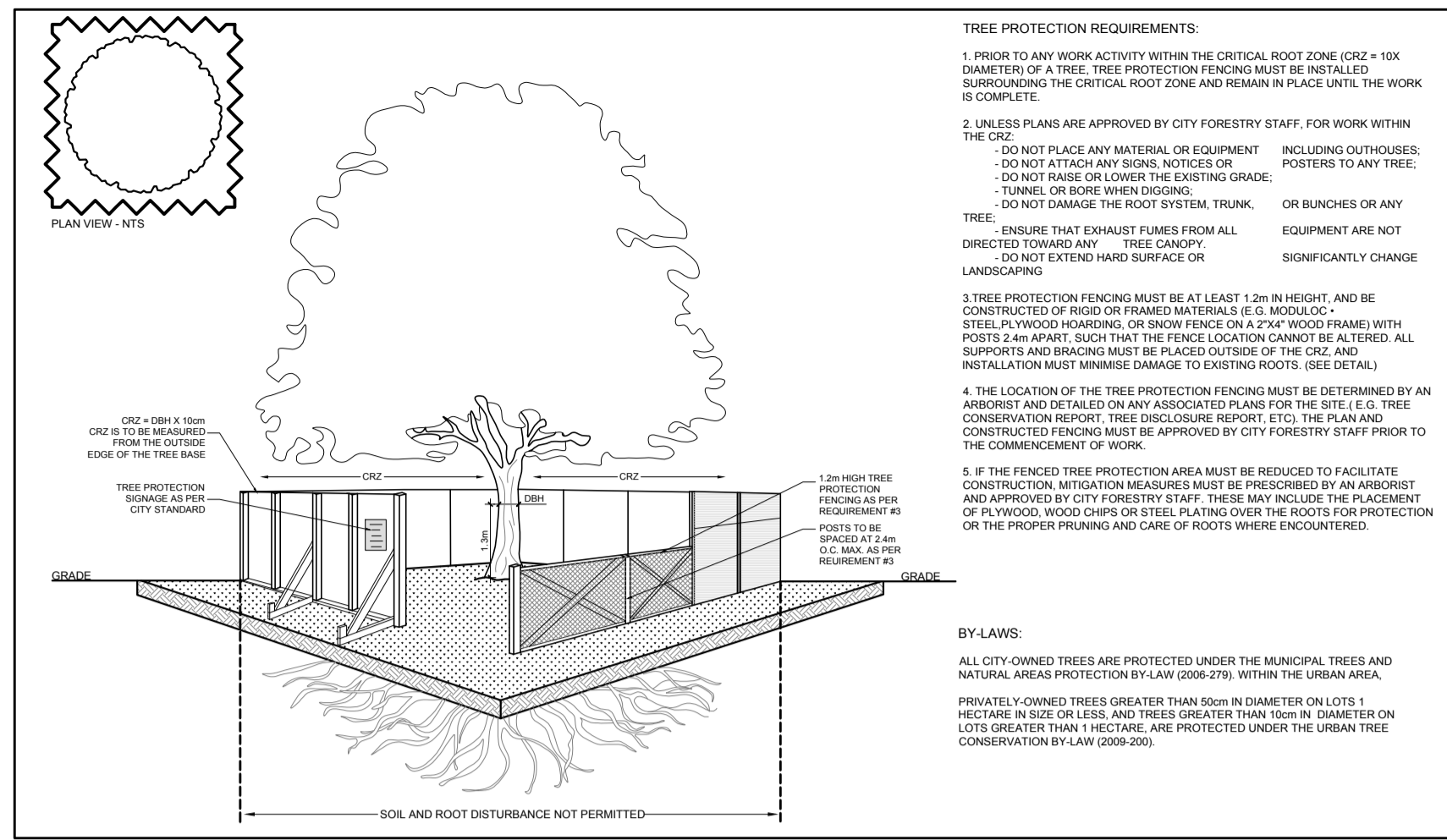
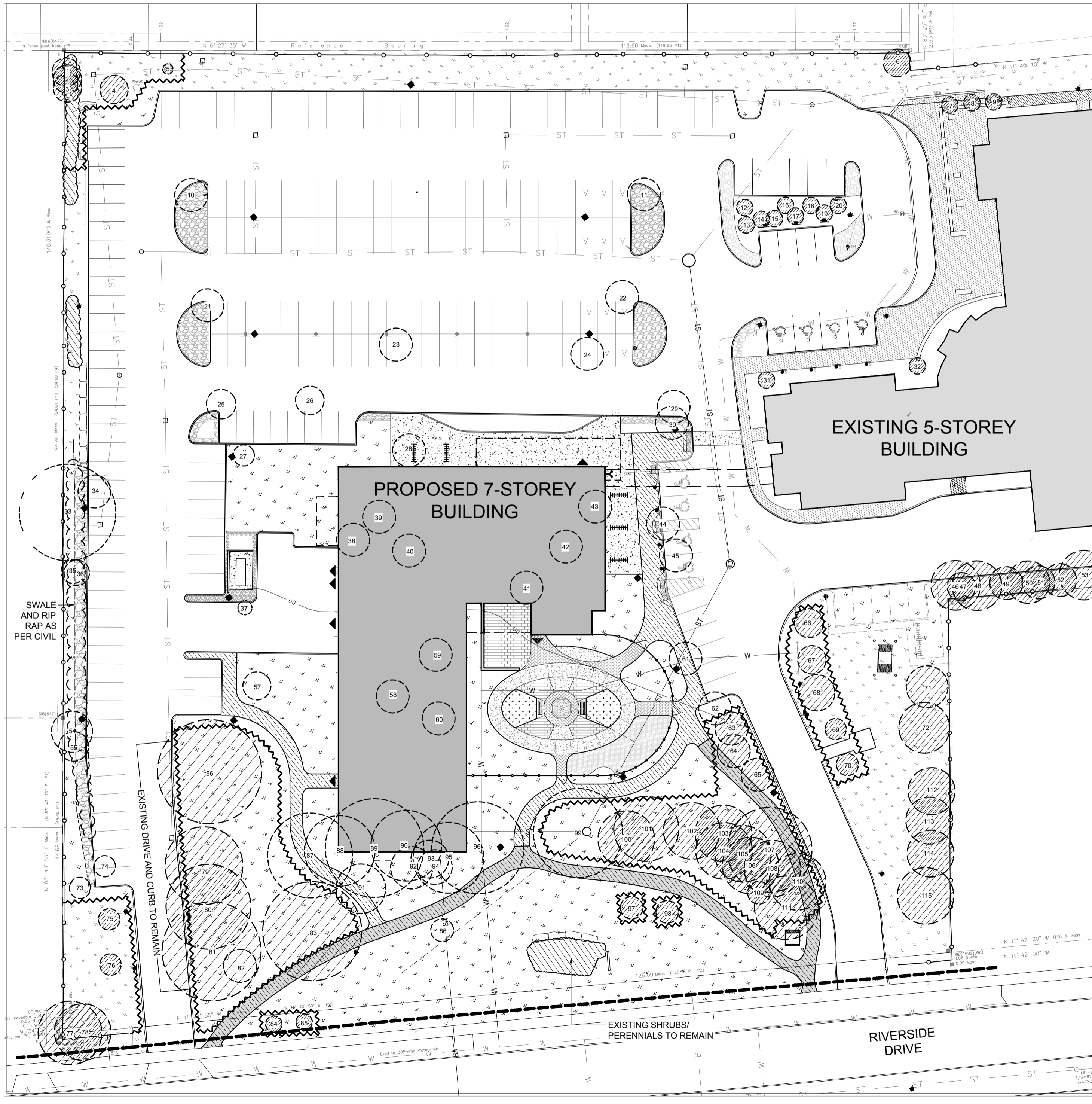


LEGEND

	EXISTING TREE TO REMAIN		EXISTING ASPHALT WALKWAY TO REMAIN
	GROUP OF EXISTING TREES TO REMAIN		PROPOSED ASPHALT WALKWAY
	EXISTING TREE TO BE REMOVED		EXISTING CONCRETE TO REMAIN
	EXISTING SHRUBS/PERENNIALS TO BE REMOVED		PROPOSED CONCRETE
	EXISTING SHRUBS/PERENNIALS TO REMAIN		EXISTING GRASS TO REMAIN
	TREE PROTECTION FENCING		PROPOSED SOD
			LIGHT -REFER TO ELECTRICAL



2 TREE PROTECTION FENCE
L.1 SCALE: NTS



1 TREE CONSERVATION REPORT
L.1 SCALE: 1:400

TREE PROTECTION REQUIREMENTS:

1. PRIOR TO ANY WORK ACTIVITY WITHIN THE CRITICAL ROOT ZONE (CRZ - 10X DIAMETER OF A TREE, TREE PROTECTION FENCING MUST BE INSTALLED SURROUNDING THE CRITICAL ROOT ZONE AND REMAIN IN PLACE UNTIL THE WORK IS COMPLETE.
2. UNLESS PLANS ARE APPROVED BY CITY FORESTRY STAFF, FOR WORK WITHIN THE CRZ:
 - DO NOT PLACE ANY MATERIAL OR EQUIPMENT INCLUDING OUTHOUSES, POSTERS TO ANY TREE.
 - DO NOT RAISE OR LOWER THE EXISTING GRADE.
 - TUNNELS OR BORE HOLE DRILLING.
 - DO NOT DAMAGE THE ROOT SYSTEM, TRUNK, OR BRANCHES OF ANY TREE.
 - DO NOT EXTEND HARD SURFACE OR SIGNIFICANTLY CHANGE LANDSCAPING.
3. TREE PROTECTION FENCING MUST BE AT LEAST 1.2m IN HEIGHT AND BE CONSTRUCTED OF PLYWOOD OR 2x4x4 WOOD ON A 2x4x4 WOOD FRAME WITH POSTS 2.4M APART, SUCH THAT THE FENCE LOCATION CANNOT BE ALTERED. ALL SUPPORTS AND BRACING MUST BE PLACED OUTSIDE OF THE CRZ AND INSTALLATION MUST MINIMIZE DAMAGE TO EXISTING ROOTS. (SEE DETAILS).
4. THE LOCATION OF THE TREE PROTECTION FENCING MUST BE DETERMINED BY AN ARBORIST AND DETAILED ON ANY ASSOCIATED PLANS FOR THE SITE. E.G. TREE CONSERVATION REPORT, TREE DISCLOSURE REPORT, ETC. THE PLAN AND CONSTRUCTION FENCING MUST BE APPROVED BY CITY FORESTRY STAFF PRIOR TO THE COMMENCEMENT OF WORK.
5. IF THE FENCED TREE PROTECTION AREA MUST BE REDUCED TO FACILITATE CONSTRUCTION MITIGATION MEASURES MUST BE PRESCRIBED BY AN ARBORIST AND APPROVED BY CITY FORESTRY STAFF. THESE MAY INCLUDE THE PLACEMENT OF PL WOOD, WOOD CHIPS OR STEEL PLATES OVER THE ROOTS FOR PROTECTION OR THE PROPER PRUNING AND CARE OF ROOTS WHERE ENCOUNTERED.

BY-LAWS:

ALL CITY-OWNED TREES ARE PROTECTED UNDER THE MUNICIPAL TREES AND NATURAL AREAS PROTECTION BY-LAW (2009-279), WITHIN THE URBAN AREA.

PRIVATELY OWNED TREES GREATER THAN 50cm IN DIAMETER ON LOTS 1 HECTARE IN SIZE OR LESS, AND TREES GREATER THAN 10cm IN DIAMETER ON LOTS GREATER THAN 1 HECTARE, ARE PROTECTED UNDER THE URBAN TREE CONSERVATION BY-LAW (2009-250).

EXISTING TREE LIST

KEY	QTY	BOTANICAL NAME	COMMON NAME	SIZE	CONDITION	CRITICAL ROOT ZONE	ACTION	OWNERSHIP
1	1	Rhamnus cathartica	Common Buckthorn	200mm cal.	GOOD	2000mm	TO REMAIN	2865 Riverside
2	1	Ulmus americana	American Elm	200mm cal.	GOOD	2000mm	TO REMAIN	2865 Riverside
3	1	Acer saccharum	Sugar Maple	200mm cal.	GOOD	2000mm	TO REMAIN	2865 Riverside
4	1	Gleditsia triacanthos	Honey Locust	200mm cal.	GOOD	2000mm	TO REMAIN	2865 Riverside
5	1	Thuja occidentalis	Eastern White Cedar	50mm cal.	POOR	500mm	TO REMAIN	2865 Riverside
6	1	Picea pungens	Colorado Spruce	200mm cal.	GOOD	2000mm	TO REMAIN	2865 Riverside
7	1	Amelanchier canadensis	Serviceberry	100mm cal.	GOOD	1000mm	TO REMAIN	2865 Riverside
8	1	Amelanchier canadensis	Serviceberry	100mm cal.	GOOD	1000mm	TO REMAIN	2865 Riverside
9	1	Amelanchier canadensis	Serviceberry	100mm cal.	GOOD	1000mm	TO REMAIN	2865 Riverside
10	1	Gleditsia triacanthos	Honey Locust	120mm cal.	GOOD	1200mm	TO BE REMOVED	2865 Riverside
11	1	Gleditsia triacanthos	Honey Locust	150mm cal.	GOOD	500mm	TO BE REMOVED	2865 Riverside
12	1	Amelanchier canadensis	Serviceberry	100mm cal.	GOOD	1000mm	TO REMAIN	2865 Riverside
13	1	Amelanchier canadensis	Serviceberry	100mm cal.	GOOD	1000mm	TO REMAIN	2865 Riverside
14	1	Amelanchier canadensis	Serviceberry	100mm cal.	GOOD	1000mm	TO REMAIN	2865 Riverside
15	1	Amelanchier canadensis	Serviceberry	100mm cal.	GOOD	1000mm	TO REMAIN	2865 Riverside
16	1	Amelanchier canadensis	Serviceberry	100mm cal.	GOOD	1000mm	TO REMAIN	2865 Riverside
17	1	Amelanchier canadensis	Serviceberry	100mm cal.	GOOD	1000mm	TO REMAIN	2865 Riverside
18	1	Amelanchier canadensis	Serviceberry	100mm cal.	GOOD	1000mm	TO REMAIN	2865 Riverside
19	1	Amelanchier canadensis	Serviceberry	100mm cal.	GOOD	1000mm	TO REMAIN	2865 Riverside
20	1	Amelanchier canadensis	Serviceberry	150mm cal.	GOOD	1500mm	TO REMAIN	2865 Riverside
21	1	Acer saccharum	Sugar Maple	150mm cal.	GOOD	1500mm	TO BE REMOVED	2865 Riverside
22	1	Ulmus americana	American Elm	100mm cal.	GOOD	1000mm	TO BE REMOVED	2865 Riverside
23	1	Ulmus americana	American Elm	200mm cal.	GOOD	2000mm	TO BE REMOVED	2865 Riverside
24	1	Ulmus americana	American Elm	100mm cal.	GOOD	1000mm	TO BE REMOVED	2865 Riverside
25	1	Ulmus americana	American Elm	200mm cal.	GOOD	2000mm	TO BE REMOVED	2865 Riverside
26	1	Quercus rubra	Red Oak	200mm cal.	GOOD	2000mm	TO BE REMOVED	2865 Riverside
27	1	Acer saccharum	Sugar Maple	150mm cal.	GOOD	1500mm	TO BE REMOVED	2865 Riverside
28	1	Acer saccharum	Sugar Maple	200mm cal.	GOOD	2000mm	TO BE REMOVED	2865 Riverside
29	1	Ulmus americana	American Elm	150mm cal.	FAIR	1500mm	TO BE REMOVED	2865 Riverside
30	1	Quercus rubra	Red Oak	170mm cal.	GOOD	1700mm	TO BE REMOVED	2865 Riverside
31	1	Amelanchier canadensis	Serviceberry	100mm cal.	GOOD	1000mm	TO REMAIN	2865 Riverside
32	1	Amelanchier canadensis	Serviceberry	100mm cal.	GOOD	1000mm	TO REMAIN	2865 Riverside
33	1	Ulmus pumila	Siberian Elm	1600mm cal.	GOOD	16000mm	TO BE REMOVED	2865 Riverside
34	1	Acer x freemanii	Freeman's Maple	100mm cal.	GOOD	1000mm	TO BE REMOVED	2865 Riverside
35	1	Populus deltoides	Eastern Cottonwood	170mm cal.	GOOD	1700mm	TO BE REMOVED	2865 Riverside
36	1	Populus deltoides	Eastern Cottonwood	180mm cal.	GOOD	1800mm	TO BE REMOVED	2865 Riverside
37	1	Acer saccharum	Sugar Maple	100mm cal.	GOOD	1000mm	TO BE REMOVED	2865 Riverside
38	1	Picea pungens	Colorado Spruce	100mm cal.	POOR	1000mm	TO BE REMOVED	2865 Riverside
39	1	Picea pungens	Colorado Spruce	200mm cal.	GOOD	2000mm	TO BE REMOVED	2865 Riverside
40	1	Picea pungens	Colorado Spruce	100mm cal.	FAIR	1000mm	TO BE REMOVED	2865 Riverside
41	1	Ulmus americana	American Elm	250mm cal.	GOOD	2500mm	TO BE REMOVED	2865 Riverside
42	1	Picea pungens	Colorado Spruce	200mm cal.	GOOD	2000mm	TO BE REMOVED	2865 Riverside
43	1	Ulmus americana	American Elm	150mm cal.	DEAD	1500mm	TO BE REMOVED	2865 Riverside
44	1	Picea pungens	Colorado Spruce	200mm cal.	GOOD	2000mm	TO BE REMOVED	2865 Riverside
45	1	Picea pungens	Colorado Spruce	200mm cal.	GOOD	2000mm	TO BE REMOVED	2865 Riverside
46	1	Ulmus pumila	Siberian Elm	350mm cal.	GOOD	3500mm	TO REMAIN	2865 Riverside
47	1	Ulmus pumila	Siberian Elm	200mm cal.	GOOD	2000mm	TO REMAIN	2865 Riverside
48	1	Ulmus pumila	Siberian Elm	350mm cal.	GOOD	3500mm	TO REMAIN	2865 Riverside
49	1	Ulmus pumila	Siberian Elm	200mm cal.	GOOD	2000mm	TO REMAIN	2865 Riverside
50	1	Ulmus pumila	Siberian Elm	350mm cal.	GOOD	3500mm	TO REMAIN	2865 Riverside
51	1	Ulmus pumila	Siberian Elm	200mm cal.	GOOD	2000mm	TO REMAIN	2865 Riverside
52	1	Ulmus pumila	Siberian Elm	200mm cal.	GOOD	2000mm	TO REMAIN	2865 Riverside
53	1	Ulmus pumila	Siberian Elm	350mm cal.	GOOD	3500mm	TO REMAIN	2865 Riverside
54	1	Acer negundo	Manitoba Maple	290mm cal.	POOR	2900mm	TO BE REMOVED	2865 Riverside
55	1	Acer negundo	Manitoba Maple	210mm cal.	GOOD	2100mm	TO BE REMOVED	2865 Riverside
56	1	Tilia cordata	Littleleaf Linden	750mm cal.	GOOD	7500mm	TO REMAIN	2865 Riverside
57	1	Picea pungens	Colorado Spruce	200mm cal.	GOOD	2000mm	TO BE REMOVED	2865 Riverside
58	1	Acer saccharum	Sugar Maple	100mm cal.	GOOD	1000mm	TO BE REMOVED	2865 Riverside
59	1	Acer saccharum	Sugar Maple	100mm cal.	GOOD	1000mm	TO BE REMOVED	2865 Riverside
60	1	Acer saccharum	Sugar Maple	100mm cal.	GOOD	1000mm	TO BE REMOVED	2865 Riverside
61	1	Ulmus americana	American Elm	140mm cal.	GOOD	1400mm	TO BE REMOVED	2865 Riverside
62	1	Ulmus americana	American Elm	150mm cal.	GOOD	1500mm	TO BE REMOVED	2865 Riverside
63	1	Acer saccharum	Sugar Maple	100mm cal.	GOOD	1000mm	TO REMAIN	2865 Riverside
64	1	Acer saccharum	Sugar Maple	100mm cal.	GOOD	1000mm	TO REMAIN	2865 Riverside
65	1	Acer saccharum	Sugar Maple	100mm cal.	GOOD	1000mm	TO REMAIN	2865 Riverside
66	1	Acer x freemanii	Freeman's Maple	200mm cal.	GOOD	2000mm	TO REMAIN	2865 Riverside
67	1	Pinus nigra	Austrian Pine	200mm cal.	GOOD	2000mm	TO REMAIN	2865 Riverside
68	1	Ulmus americana	American Elm	250mm cal.	GOOD	2500mm	TO REMAIN	2865 Riverside
69	1	Picea pungens	Colorado Spruce	150mm cal.	GOOD	1500mm	TO REMAIN	2865 Riverside
70	1	Picea pungens	Colorado Spruce	150mm cal.	GOOD	1500mm	TO REMAIN	2865 Riverside
71	1	Picea glauca	White Spruce	300mm cal.	GOOD	3000mm	TO REMAIN	2865 Riverside
72	1	Malus spp.	Crabapple	350mm cal.	GOOD	3500mm	TO REMAIN	2865 Riverside
73	1	Acer negundo	Manitoba Maple	150mm cal.	GOOD	1500mm	TO REMAIN	2865 Riverside
74	1	Acer x freemanii	Freeman's Maple	150mm cal.	GOOD	1500mm	TO BE REMOVED	2865 Riverside
75	1	Acer x freemanii	Freeman's Maple	150mm cal.	GOOD	1500mm	TO REMAIN	2865 Riverside
76	1	Acer x freemanii	Freeman's Maple	150mm cal.	GOOD	1500mm	TO REMAIN	2865 Riverside
77	1	Ulmus americana	American Elm	450mm cal.	DEAD	4500mm	TO REMAIN	Jointly Owned 2865 Riverside and City of Ottawa
78	1	Acer negundo	Manitoba Maple	400mm cal.	FAIR	4000mm	TO REMAIN - Marked for removal by Hydro	Jointly Owned 2865 Riverside and City of Ottawa
79	1	Acer saccharinum	Silver Maple	550mm cal.	GOOD	5500mm	TO REMAIN	2865 Riverside
80	1	Acer saccharinum	Silver Maple	600mm cal.	GOOD	6000mm	TO REMAIN	2865 Riverside
81	1	Acer saccharinum	Silver Maple	700mm cal.	GOOD	7000mm	TO REMAIN	2865 Riverside
82	1	Malus spp.	Crabapple	250mm cal.	DEAD	2500mm	TO BE REMOVED	2865 Riverside
83	1	Acer saccharinum	Silver Maple	700mm cal.	POOR	7000mm	TO REMAIN	2865 Riverside
84	1	Syringa reticulata	Japanese Tree Lilac	50mm cal.	GOOD	500mm	TO REMAIN	City of Ottawa
85	1	Malus spp.	Crabapple	50mm cal.	GOOD	500mm	TO REMAIN	City of Ottawa
86	1	Acer saccharum	Sugar Maple	150mm cal.	GOOD	1500mm	TO BE REMOVED	2865 Riverside
87	1	Tilia americana	Basewood	600mm cal.	GOOD	6000mm	TO BE REMOVED	2865 Riverside
88	1	Tilia americana	Basewood	500mm cal.	GOOD	5000mm	TO BE REMOVED	2865 Riverside
89	1	Tilia americana	Basewood	700mm cal.	GOOD	7000mm	TO BE REMOVED	2865 Riverside
90	1	Tilia americana	Basewood	500mm cal.	GOOD	5000mm	TO BE REMOVED	2865 Riverside
91	1	Picea glauca	White Spruce	150mm cal.	GOOD	1500mm	TO BE REMOVED	2865 Riverside
92	1	Picea glauca	White Spruce	350mm cal.	POOR	3500mm	TO BE REMOVED	2865 Riverside
93	1	Pinus nigra	Austrian Pine	150mm cal.	GOOD	1500mm	TO BE REMOVED	2865 Riverside
94	1	Pinus nigra	Austrian Pine	150mm cal.	GOOD	1500mm	TO BE REMOVED	2865 Riverside
95	1	Pinus nigra	Austrian Pine	500mm cal.	GOOD	5000mm	TO BE REMOVED	2865 Riverside
96	1	Gleditsia triacanthos	Honey Locust	650mm cal.	GOOD	6500mm	TO BE REMOVED	2865 Riverside
97	1	Ulmus americana	American Elm	200mm cal.	GOOD	2000mm	TO REMAIN	2865 Riverside
98	1	Acer saccharum	Sugar Maple	160mm cal.	GOOD	1600mm	TO REMAIN	2865 Riverside
99	1	Gleditsia triacanthos	Honey Locust	650mm cal.	GOOD	6500mm	TO BE REMOVED	2865 Riverside
100	1	Picea glauca	White Spruce	400mm cal.	GOOD	4000mm	TO REMAIN	2865 Riverside
101	1	Picea glauca	White Spruce	460mm cal.	GOOD	4600mm	TO REMAIN	2865 Riverside
102	1	Pinus nigra	Austrian Pine	400mm cal.	GOOD	4000mm	TO REMAIN	2865 Riverside
103	1	Pinus nigra	Austrian Pine	400mm cal.	GOOD	4000mm	TO REMAIN	2865 Riverside
104	1	Pinus nigra	Austrian Pine	400mm cal.	GOOD	4000mm	TO REMAIN	2865 Riverside
105	1	Pinus nigra	Austrian Pine	400mm cal.	GOOD	4000mm	TO REMAIN	2865 Riverside
106	1	Pinus nigra	Austrian Pine	400mm cal.	GOOD	4000mm	TO REMAIN	2865 Riverside
107	1	Pinus nigra	Austrian Pine	600mm cal.	GOOD	6000mm	TO REMAIN	2865 Riverside
108	1	Pinus nigra	Austrian Pine	400mm cal.	GOOD	4000mm	TO REMAIN	2865 Riverside
109	1	Malus spp.	Crabapple	150mm cal.	GOOD	1500mm	TO REMAIN	2865 Riverside
110	1	Ulmus americana	American Elm	400mm cal.	GOOD	4000mm	TO REMAIN	2865 Riverside
111	1	Gleditsia triacanthos	Honey Locust	450mm cal.	GOOD	4500mm	TO REMAIN	2865 Riverside
112	1	Picea glauca	White Spruce	300mm cal.	GOOD	3000mm	TO REMAIN	2865 Riverside
113	1	Picea glauca	White Spruce	300mm cal.	GOOD	3000mm	TO REMAIN	2865 Riverside
114	1	Picea glauca	White Spruce	300mm cal.	GOOD	3000mm	TO REMAIN	2865 Riverside
115	1	Malus spp.	Crabapple	350mm cal.	GOOD	3500mm	TO REMAIN	2865 Riverside

CLIENT

CONSULTANTS

ARCHITECTS:
EDWARD J. CUHACI & ASSOCIATES ARCHITECTS INC.
171 Slater St, Suite 100, Ottawa, Ontario, K1P 5H7
Fax: (613) 236-1944 Telephone: (613) 236-7135 E-mail: info@cuhaci.com

CIVIL ENGINEERS:

WSP CANADA INC.
1224 GARDINERS ROAD, SUITE 201
KINGSTON, ONTARIO
CANADA K7P 0Z2
PHONE: 613-634-7373
WWW.WSP.COM

SURVEYORS:
FARLEY, SMITH & DENIS SURVEYING LTD.
ONTARIO LAND SURVEYORS
CANADA LANDS SURVEYORS
190 COLONNARD ROAD, OTTAWA, ONTARIO K2E 7J5

GENERAL NOTES:

1. IT IS THE RESPONSIBILITY OF THE APPROPRIATE CONTRACTOR OR OFFICIAL TO REPORT ANY ERRORS, OMISSIONS OR DISCREPANCIES ON THIS PLAN WITH ACTUAL SITE CONDITIONS TO THE LANDSCAPE ARCHITECT BEFORE PROCEEDING WITH CONSTRUCTION.
2. THE CONTRACTOR IS TO NOTIFY ALL UTILITY COMPANIES AND AUTHORITIES PRIOR TO ANY EXCAVATION AND ASCERTAIN LOCATIONS OF UNDERGROUND SERVICES.
3. THE CONTRACTOR IS TO REINSTATE ALL AREAS AND ITEMS DAMAGED AS A RESULT OF CONSTRUCTION ACTIVITY.
4. THE CONTRACTOR IS TO COMPLY WITH ALL PERTINENT CODES AND BY-LAWS.
5. THE CONTRACTOR IS TO MAINTAIN A POSITIVE SURFACE RUN-OFF THROUGHOUT THE ENTIRE CONSTRUCTION PERIOD.
6. THE LANDSCAPE ARCHITECT IS NOT RESPONSIBLE FOR SUBSURFACE CONDITIONS.
7. THE CONTRACTOR IS TO IDENTIFY ALL EXISTING TREES TO REMAIN ON SITE WITH THE LANDSCAPE ARCHITECT PRIOR TO CONSTRUCTION.
8. THE CONTRACTOR IS TO STAKE THE PROPOSED LOCATION OF ALL PLANT MATERIAL IN CONJUNCTION WITH THE LANDSCAPE ARCHITECT PRIOR TO EXCAVATION.
9. MINIMUM DISTANCES FOR SELECTED DECIDUOUS TREES ARE AS FOLLOWS:
 - 9.1. BUILDING FOUNDATIONS - 7.5M
 - 9.2. SIDEWALKS - 1.5M
 - 9.3. PUBLIC STREETS - 2.5M
 - 9.4. UNDERGROUND INFRASTRUCTURE - 2.0M
10. ALL TREES WITHIN 1M OF UNDERGROUND UTILITY TRENCHES ARE TO BE EXCAVATED BY HAND.
11. REMOVE ALL PROTECTIVE WRAPPING FROM TREE TRUNKS AFTER INSTALLATION.
12. STAKING OF TREES SHALL ONLY BE PERFORMED IF NECESSARY.
13. ENSURE THAT MULCH IS PULLED BACK A MINIMUM DISTANCE OF 75MM FROM BASE OF TREE TRUNK.

8	ISSUED FOR FINAL SITE PLAN CONTROL	07/08/2024	WF	JL
7	RESUBMISSION FOR SPC PHASE 3 PRE CONSULTATION	04/26/2024	WF	JL
6	ISSUED FOR COORDINATION	04/05/2024	WF	JL
5	ISSUED FOR DISCUSSION AND REVIEW	04/04/2024	WF	JL
4	ISSUED FOR DISCUSSION AND REVIEW	03/22/2024	WF	JL
3	ISSUED FOR SPA	01/23/2024	WF	JL
2	ISSUED FOR DISCUSSION AND REVIEW	07/28/2023	WF	JL
1	ISSUED FOR DISCUSSION AND REVIEW	11/04/2022	ML	JL
No.	Issue	Date	DR	CK
		MM/DD/YY		

JAMES B. LENNOX & ASSOCIATES INC.
LANDSCAPE ARCHITECTS
3332 CARLING AVE. OTTAWA, ONTARIO K2H 5A8
Tel: (613) 725-5168 Fax: (866) 343-5942</