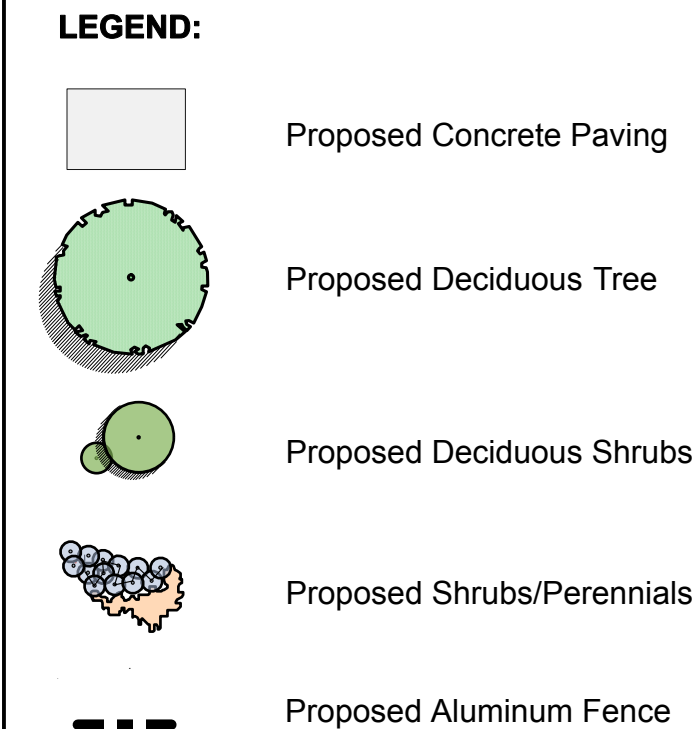


### DETAIL OF ALUMINUM FENCE ON CONCRETE PARAPET/PRECAST BLOCK RETAINING WALL NTS



<https://permacon.ca/en/product/grande-wall/>



**NOTES:**

**GENERAL**

1. CONSULT SCALE THIS DRAWING.
2. THIS DRAWING IS TO BE IN CONJUNCTION WITH RELATED ARCHITECTURAL/ENGINEERING DRAWINGS.
3. IT IS THE RESPONSIBILITY OF THE APPROPRIATE CONTRACTOR TO CHECK AND VERIFY ALL DIMENSIONS ON SITE AND REPORT ALL ERRORS AND/OR OMISSIONS TO THE LANDSCAPE ARCHITECT BEFORE PROCEEDING WITH WORK.
4. CONTRACTOR MUST OBTAIN AND COMPLY WITH ALL PERTINENT CODES AND BY-LAWS. ALL PERMITS ARE THE RESPONSIBILITY OF THE CONTRACTOR.
5. THIS DRAWING MUST NOT BE USED FOR CONSTRUCTION UNTIL SIGNED BY THE LANDSCAPE ARCHITECT.
6. LANDSCAPE ARCHITECT'S DESIGN IS THE EXCLUSIVE PROPERTY OF THAKAR ASSOCIATES. ASSOCIATED DESIGN CONSULTANTS AND SHALL NOT BE USED FOR ANY PURPOSES WITHOUT WRITTEN CONSENT. GRAPHIC SYMBOLS, DETAILS AND FORMATS USED ON THIS DRAWING ARE COPYRIGHTED AND MAY NOT BE COPIED, ADAPTED OR REPRODUCED IN ANY FORM WITHOUT THE WRITTEN CONSENT OF THAKAR ASSOCIATES.
7. CONTRACTOR SHALL NOTIFY LANDSCAPE ARCHITECT BY PHONE AND FAX AT LEAST 24 HOURS IN ADVANCE OF THE COMMENCEMENT OF DEMOLITION WORK. REMOVAL OF EXISTING VEGETATION AND THE START OF NEW CONSTRUCTION.
8. SOURCE INFORMATION: FROM DRAWINGS SUPPLIED BY THE CAMPANALE GROUP.

**SITE LAYOUT**

1. CONTRACTOR TO STAKE OUT SITE ELEMENTS AND OBTAIN APPROVAL OF LANDSCAPE ARCHITECT BEFORE COMMENCING WORK.
2. ALL HORIZONTAL DIMENSIONS ARE SHOWN IN METRES AND MILLIMETRES.
3. PREMANUFACTURED ITEMS TO BE INSTALLED AS PER MANUFACTURER'S INSTRUCTIONS.
4. ALL FENCING IS TO BE INSTALLED 300mm INSIDE PRIVATE PROPERTY PARALLEL TO THE PROPERTY LINE UNLESS OTHERWISE INDICATED.

**DEMOLITION**

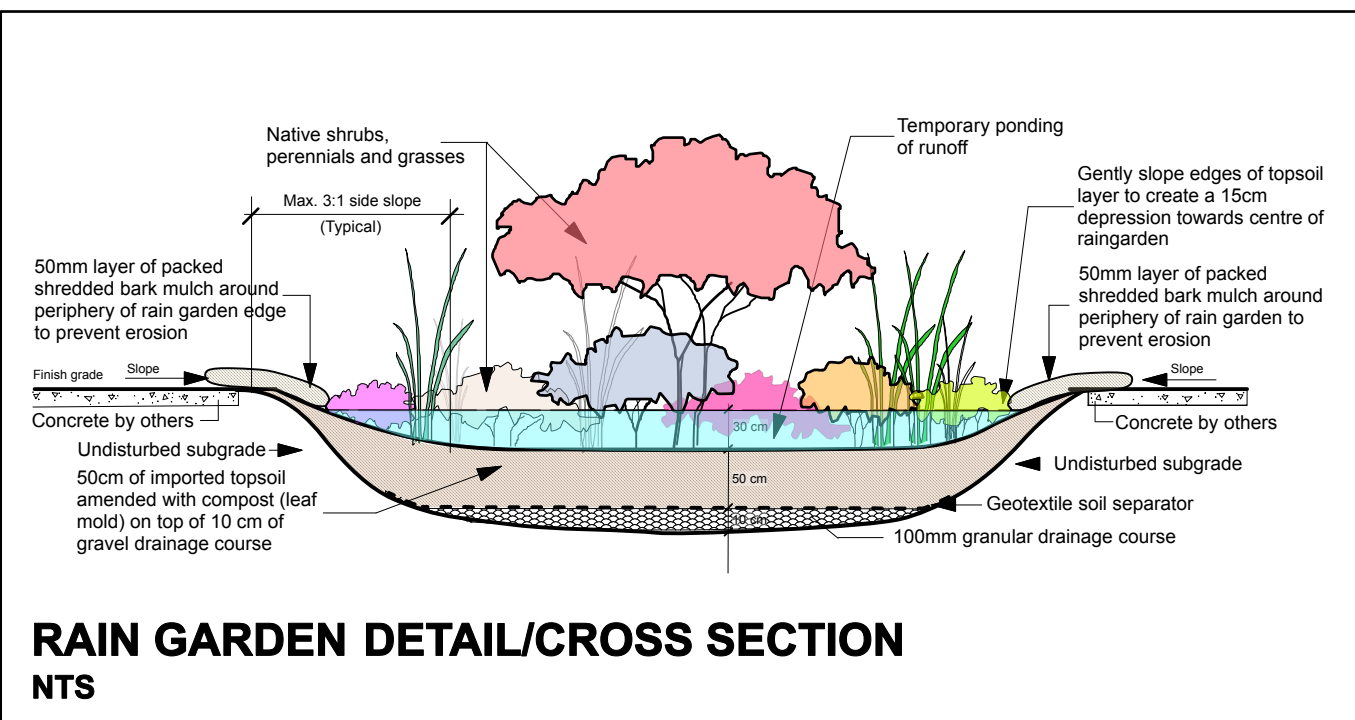
1. ALL EXISTING AREAS AND/OR ITEMS INDICATED FOR DEMOLITION AND REMOVAL ARE TO BE REMOVED FROM SITE.
2. DEMOLITION RUBBLE OR RUBBISH IS TO BE REMOVED FROM SITE. BACKFILLING OF RUBBLE WILL NOT BE ACCEPTED. ITEMS TO BE REMOVED INCLUDE ASSOCIATED WIRING, PIPING, FOOTINGS, AND GRANULAR SUBGRADES UNLESS INDICATED ON THE DRAWINGS AS ITEMS TO BE RETAINED.
3. TREES AND SHRUBS INDICATED TO BE REMOVED ARE ALSO TO BE GROUND OUT, INCLUDING STUMPS AND ROOTS, TO A MINIMUM DEPTH OF 400 MM BELOW GRADE.
4. ALL AREAS, TREES OR STRUCTURES DESIGNATED FOR RETENTION ON SITE ARE TO BE REINSTATED, REPLACED OR REPAIRED AT THE LANDSCAPE ARCHITECT'S OPTION AND TO THE LANDSCAPE ARCHITECT'S SATISFACTION SHOULD THESE BE DAMAGED OR DISTURBED DURING CONSTRUCTION.

**PLANTING/REMOVALS**

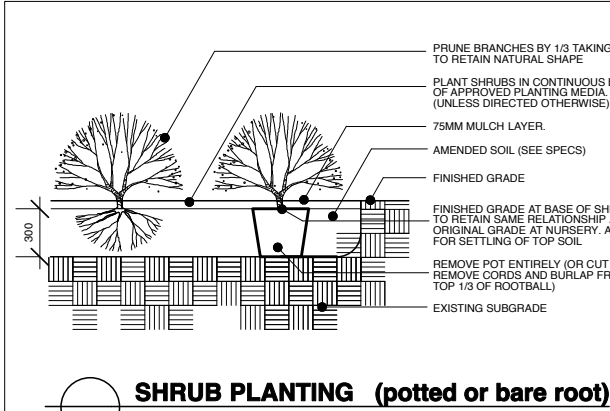
1. THE CONTRACTOR IS TO VERIFY THE LOCATION OF ALL UNDER-GROUND UTILITIES PRIOR TO COMMENCING WORK. PLANTS WHOSE ROOTS ARE IN CONJUNCTION WITH UTILITIES IS TO BE RELOCATED AT THE DIRECTION OF THE LANDSCAPE ARCHITECT.
2. ALL STREETSCAPE TREES EXCEPT CONIFERS ARE TO BE LOCATED WITHIN THE MUNICIPAL BOULEVARD AT A DISTANCE OF 0.9M FROM THE PROPERTY LINE.
3. NO PLANT MATERIALS SUBSTITUTIONS WILL BE ACCEPTED WITHOUT PRIOR APPROVAL FROM THE LANDSCAPE ARCHITECT.
4. ALL PLANT MATERIALS IS TO BE NURSERY GROWN STOCK AND SHALL MEET OR EXCEED THE SPECIFICATIONS OF THE CANADIAN NURSERY TRADE ASSOCIATION (1999) FOR SIZE, HEIGHT, SPREAD, GRADE AND METHOD OF CULTIVATION.
5. ALL EXISTING NATURAL PLANTS ARE TO BE REMOVED FROM SITE. BACKFILL PLANTING INSTALLATIONS WITH IMPORTED PREPARED TOPSOIL OR STOCKPILED TOPSOIL ON SITE. SUBJECT TO LANDSCAPE ARCHITECT'S APPROVAL.
6. SEEDING AND SEEDING TO BE INSTALLED ON MINIMUM 135 MM AND 150 MM DEEP LAYERS RESPECTIVELY OF PREPARED IMPORTED TOPSOIL.
7. ALL SHRUBS TO BE INSTALLED IN BEDS (EXCEPT ON SLOPES) WITH MINIMUM DEPTH OF 500 MM AND MULCH WITH 75 MM MINIMUM LAYER OF SHREDDED PINE BARK MULCH UNLESS OTHERWISE SPECIFIED.
8. ALL TREES TO BE STAKED ACCORDING TO THE STANDARDS INDICATED ON THE PLANTING DETAILS.
9. ALL AREAS DISTURBED DURING CONSTRUCTION, BEYOND THE PROJECT LIMITS, ARE TO BE REINSTATED TO ORIGINAL CONDITIONS AT NO ADDITIONAL EXPENSE.
10. ALL PLANT MATERIAL AND GRASS AREAS INSTALLED UNDER THIS CONTRACT SHALL BE WATERED, WEEDED AND MAINTAINED BY THE CONTRACTOR UNTIL WRITTEN ACCEPTANCE OF THE WORK BY THE LANDSCAPE ARCHITECT.
11. ARRANGEMENT AND SPACING OF PLANT MATERIAL ON SITE TO BE IN ACCORDANCE WITH LOCAL CULTURAL AND AESTHETIC CRITERIA. SPACING AND POSITIONING OF PLANTS ARE OPTIMIZED FOR BEST VISUAL DISPLAY AND OUTLINES OF SHRUB BEDS AND OTHER AREAS ARE SMOOTH, UNIFORM AND SENSITIVE TO THE DESIGN INTENT.

PLANT LIST							
KEY	NO.	BOTANIC NAME	ENGLISH NAME	SIZE	CONDIT.	REMARKS	MIN. SOIL VOLUME/TREE
SV	15	Syringa vulgaris	Common Lilac	1.5m ht	Potted	Bushy	Large Deciduous Shrub
SG	55	Spirea japonica	Goldmound	60 cm ht	Potted	Bushy Multi Stemmed	Medium Deciduous Shrub
RR	54	Rosa rugosa	Rugosa Rose	80 cm ht	Potted	Bushy Multi Stemmed	Medium Deciduous Shrub
GR	50	Geranium Rozanne	Rozanne Geranium	2 yr. old	Container	Bushy	Perennial
RAIN GARDEN PLANT LIST							
SC	2	Sambucus canadensis	Elderberry	60cm ht	BR	Bushy	Deciduous Shrub
AM	12	Black Chokeberry	Aronia melanocarpa	40cm ht	BR	Bushy	Small Deciduous Shrub
AG	18	Andropogon gerardii	Big Bluestem	2 yr. old	Container	Bushy	Perennial Grass
RH	18	Rudbeckia hirta	Black-eyed Susan	2 yr. old	Container	Bushy	Perennial
EM	12	Eupatorium maculatum	Spotted Joe-Pye Weed	2 yr. old	Container	Bushy	Perennial
AI	12	Asclepias incarnata	Swamp Milkweed	2 yr. old	Container	Bushy	Perennial
SR	8	Solidago rigida	Stiff Goldenrod	2 yr. old	Container	Bushy	Perennial

**Setbacks**  
The following setbacks should be maintained between trees and utilities, paved areas, etc.:  
- Driveways: Deciduous Trees 1.5m / Coniferous Trees 2.5m  
- Buried Utilities (water pipes, storm & sanitary sewers, cables, other buried services): 2.0 m  
- Aboveground Structures (streetlights, hydrants, curbs, hydro boxes): 1.5 m

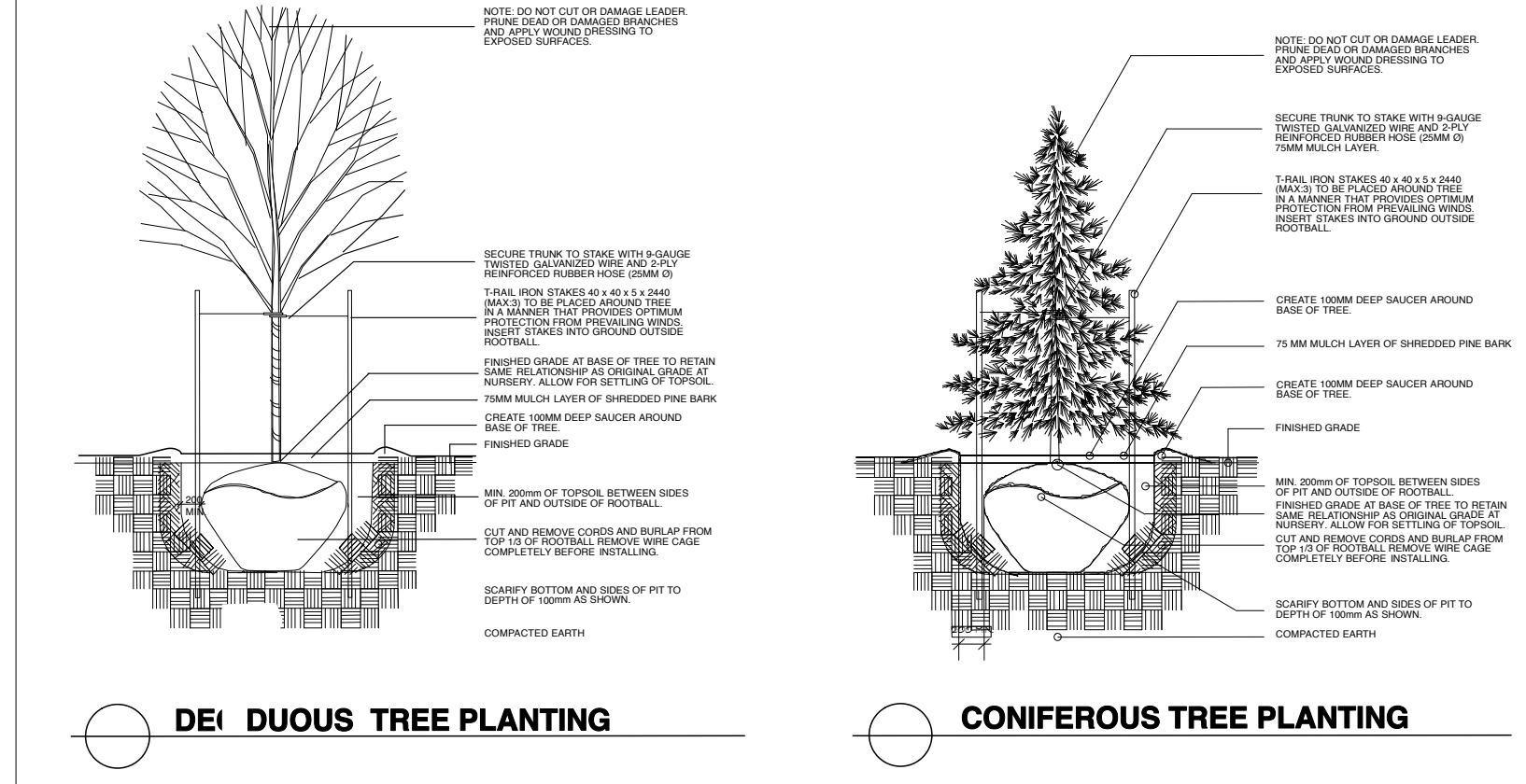


### RAIN GARDEN DETAIL/CROSS SECTION NTS



SHRUB PLANTING (potted or bare root)

GERALDINE WILDMAN  
MANAGER, DEVELOPMENT REVIEW SOUTH  
PLANNING, DEVELOPMENT AND BUILDING SERVICES  
DEPARTMENT, CITY OF OTTAWA



DECIDUOUS TREE PLANTING

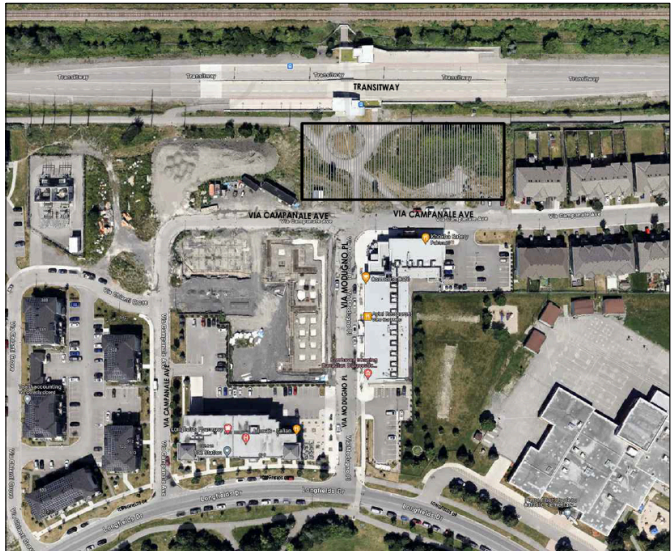
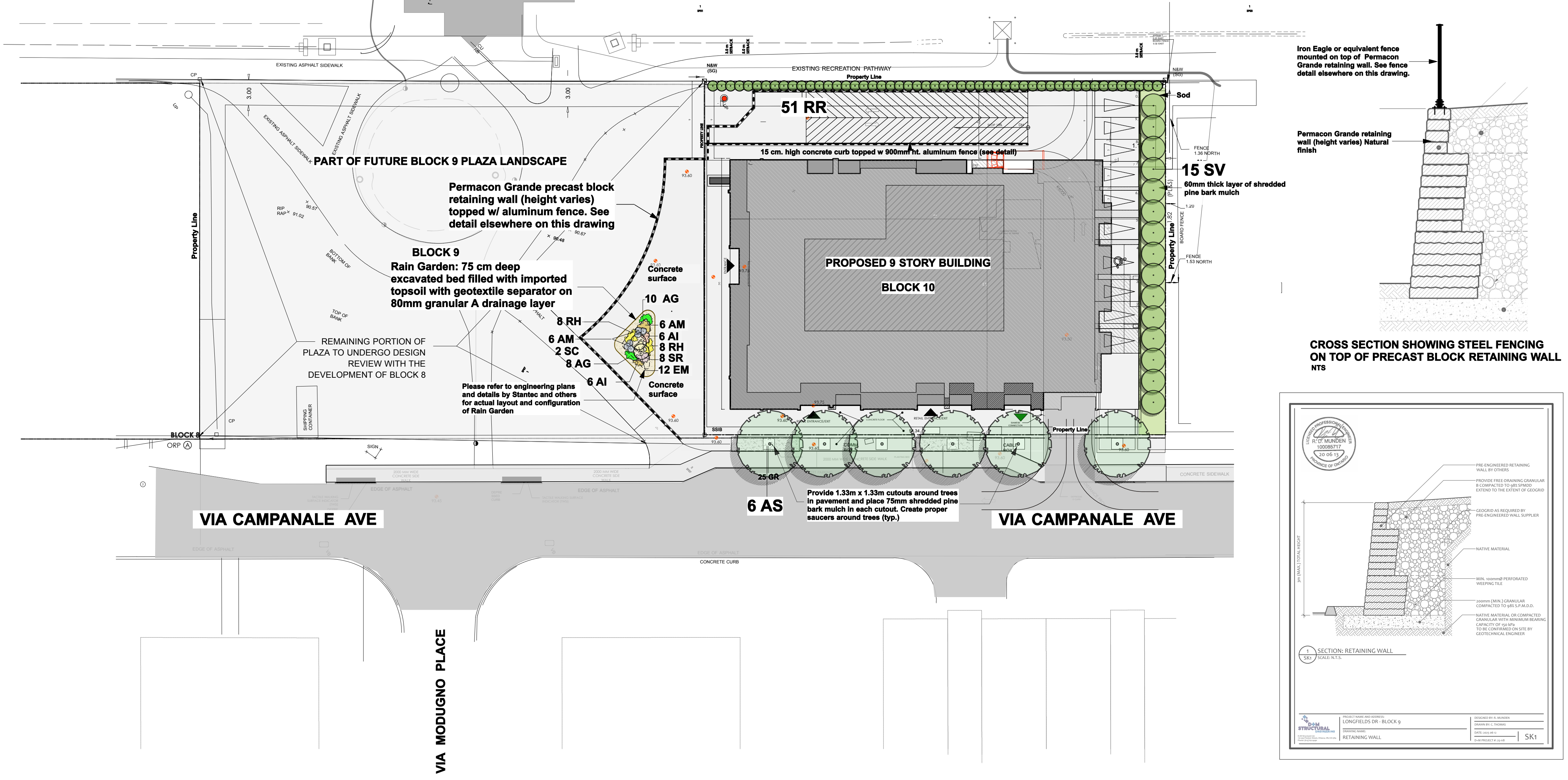
CONIFEROUS TREE PLANTING

**NOTE:**

1. Landscape Contractor must advise Project Landscape Architect of the start of construction min. 48 hours by email prior to commencement of work, and obtain approval for planting and paving layouts before installation.
2. Landscape Contractor must keep up-to-date record of all changes to landscape installations, including planting, paving and site furniture placement.
3. Landscape Contractor should adhere closely to organic and geometric layouts as shown on landscape plan to ensure optimum placing, spacing and display of plantings.
4. Landscape Contractor to use discretion and judgement and reject trees or plants on site which do not meet minimum size, shape and branch growth criteria as specified on this drawing.
5. Wire baskets and burlap used to hold the root ball and rope that is tied around the root collar are to be removed at the time of the planting of the trees. Trees planted too deep or too shallow, or without the baskets and rope removed, may be rejected at the time of the inspection.
6. All deciduous street trees to be planted 0.6 m away from property line and 1.5 m away from any adjacent driveway, coniferous trees to be planted on private property and set back as necessary to avoid conflicts sightlines, especially at daylight triangles.
7. Locations and configurations of driveway and unit footprints are schematic only.
8. Adjust tree locations on site in accordance with utility and easement locations.
9. Before installing, establish correct locations of plant material and fencing on site by checking locations of access easements and other minimum clearances. refer to the site plan, survey plan, and engineering drawings prepared by others.
10. Final locations of trees to be adjusted in accordance with building and driveway locations on site.
11. All plantings in this contract will be subject to a full one-year guarantee from the date of acceptance by the City.

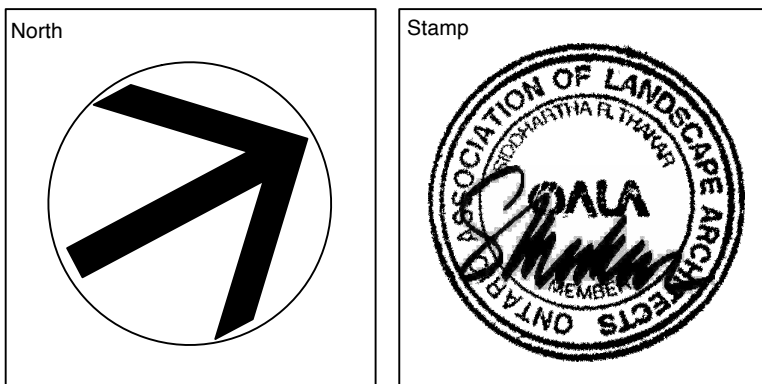
**NOTE RE EXISTING VEGETATION:**  
THERE ARE NO EXISTING TREES ON THIS SITE, AS SUCH NO EXISTING VEGETATION WILL BE RETAINED

**TREE CANOPY COVERAGE:**  
TOTAL BLOCK 10 SITE AREA APPROX 2315 M2  
TOTAL TREE CANOPY IN 40 YEARS: 6 DECIDUOUS TREES @ 38.45 M2 X 6 = 230 M2 (10% APPROX)



**CAMPANALE HOMES**  
200-1187 Bank Street, Ottawa  
Ontario K1S 9X7  
Tel. 613 730-7000

8.	Updated Rain Garden configuration, etc.	Sept 11/25
7.	Revised/Interim Block 10 Munic. Submission	Sept 04/25
6.	Revised/Interim Block 10 Munic. Submission	June 23/25
5.	Revised/Interim Block 10 Munic. Submission	Jan. 06/25
4.	Revised/Interim Block 10 Munic. Submission	Dec. 24/24
3.	Municipal Submission	July 15/24
2.	Site Plan updates	June 28/24
1.	Client Review	June 13/24
No.	Revision	Date



**THAKAR ASSOCIATES  
DESIGN  
CONSULTANTS**  
Tel: (613) 523-7602 Fax: (613) 523-2262  
Email: mail@thakarasociates.com

**FOTENN**  
PLANNING + DESIGN

**WOODMAN ARCHITECT  
ASSOCIATES LTD.**

**Consultants**  
Planning: FOTENN  
Architects: Woodman Architect & Associates Ltd.  
Structural: D+M Structural Ltd  
Civil: Stantec  
Mechanical: Jain Consultants  
Noise: Gradient Wind Engineering Inc.  
Infrastructure: Parsons

**Project**  
**BLOCKS 9 & 10,  
609 LONGFIELDS DR.  
NEPEAN, BARRHAVEN EAST - OTTAWA**

### INTERIM LANDSCAPE PLAN

Drawn: STAFF

Scale: 1:300

Job No.: 288.10

Start Date:

Dwg. No.:

**L - 1**