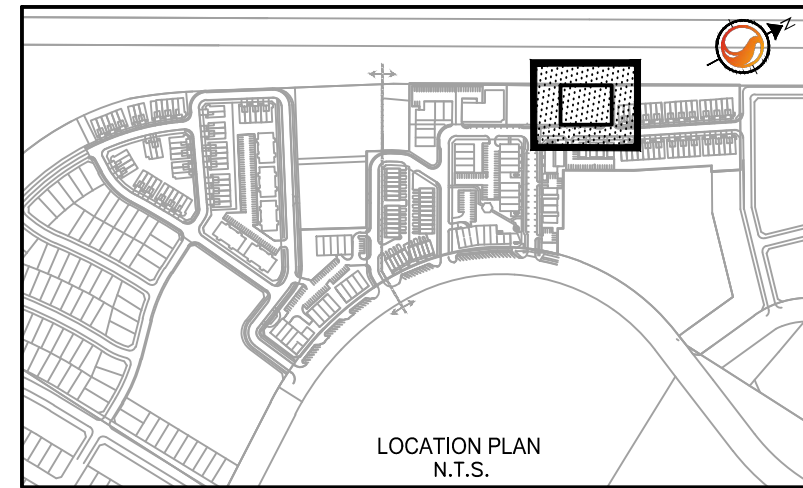


*G Wildman*

GERALDINE WILDMAN  
MANAGER, DEVELOPMENT REVIEW SOUTH  
PLANNING, DEVELOPMENT AND BUILDING SERVICES  
DEPARTMENT, CITY OF OTTAWA

APPROVED

By Geraldine Wildman at 2:14 pm, Oct 01, 2025

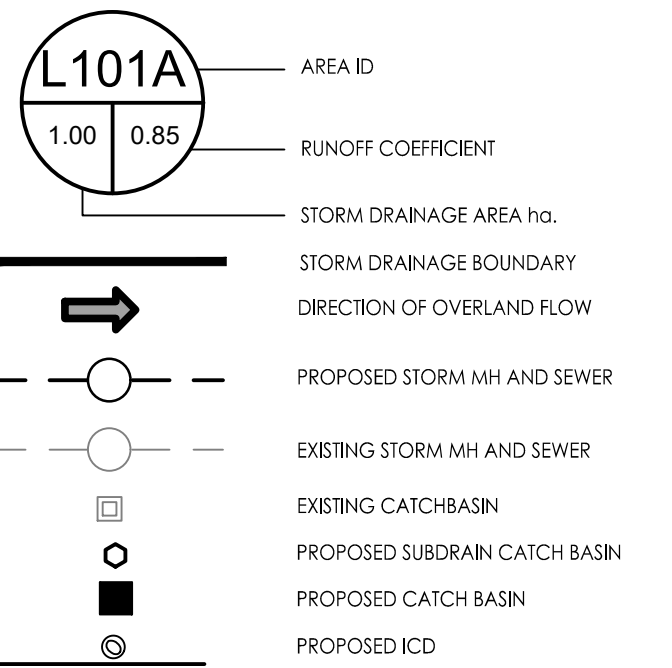


Stantec Consulting Ltd.  
400 - 1331 Clyde Avenue  
Ottawa ON  
Tel. 613.722.4420  
www.stantec.com

Copyright Reserved

The Contractor shall verify and be responsible for all dimensions. DO NOT scale the drawing - any errors or omissions shall be reported to Stantec without delay.  
The Copyrights to all designs and drawings are the property of Stantec. Reproduction or use for any purpose other than that authorized by Stantec is forbidden.

Legend



Notes

- INTERNAL PLUMBING AND SUMP PUMPS TO BE DESIGNED BY THE MECHANICAL CONSULTANT.
- STORMWATER MANAGEMENT TO BE PROVIDED THROUGH A CISTERN. FINAL CISTERN LOCATION AND ASSOCIATED OVERFLOW TO BE COORDINATED WITH ARCHITECT AND MECHANICAL CONSULTANT.
- BUILDING CISTERN = 80.0m<sup>3</sup> AND RELEASE RATE 10.4L/s PUMP RATE
- TOTAL PERMITTED RELEASE RATE FROM SITE = 13 L/S
- TOTAL POST DEVELOPMENT RELEASE RATE FROM SITE= 13 L/S (100 YR)

6	REVISED PER CITY COMMENT	JP	D/SGG	25.09.09
5	REVISED SITE PLAN	JP	D/SGG	25.07.02
4	SHIFTED SIAMESE 1m	JP	D/SGG	25.06.05
3	ISSUED FOR CITY REVIEW	JP	D/SGG	25.04.03
2	ISSUED FOR CITY REVIEW	JP	D/SGG	25.01.14
1	ISSUED FOR CITY REVIEW	JP	DT	24.07.15
Revision		By	Appd.	YY.MM.DD

File Name:	160401885-D81.dwg	JP	SGG/MW	JP	24.07.10
		Dwn.	Chkd.	Dsgn.	YY.MM.DD

Permit-Seal

Client/Project

CAMPANALE HOMES  
200 - 1187 Bank Street, Ottawa, ON

609 LONGFIELDS DRIVE  
BLOCK 10  
Ottawa, ON

Title

STORM DRAINAGE PLAN

Project No.  
160401885

Scale  
1:150

Drawing No.

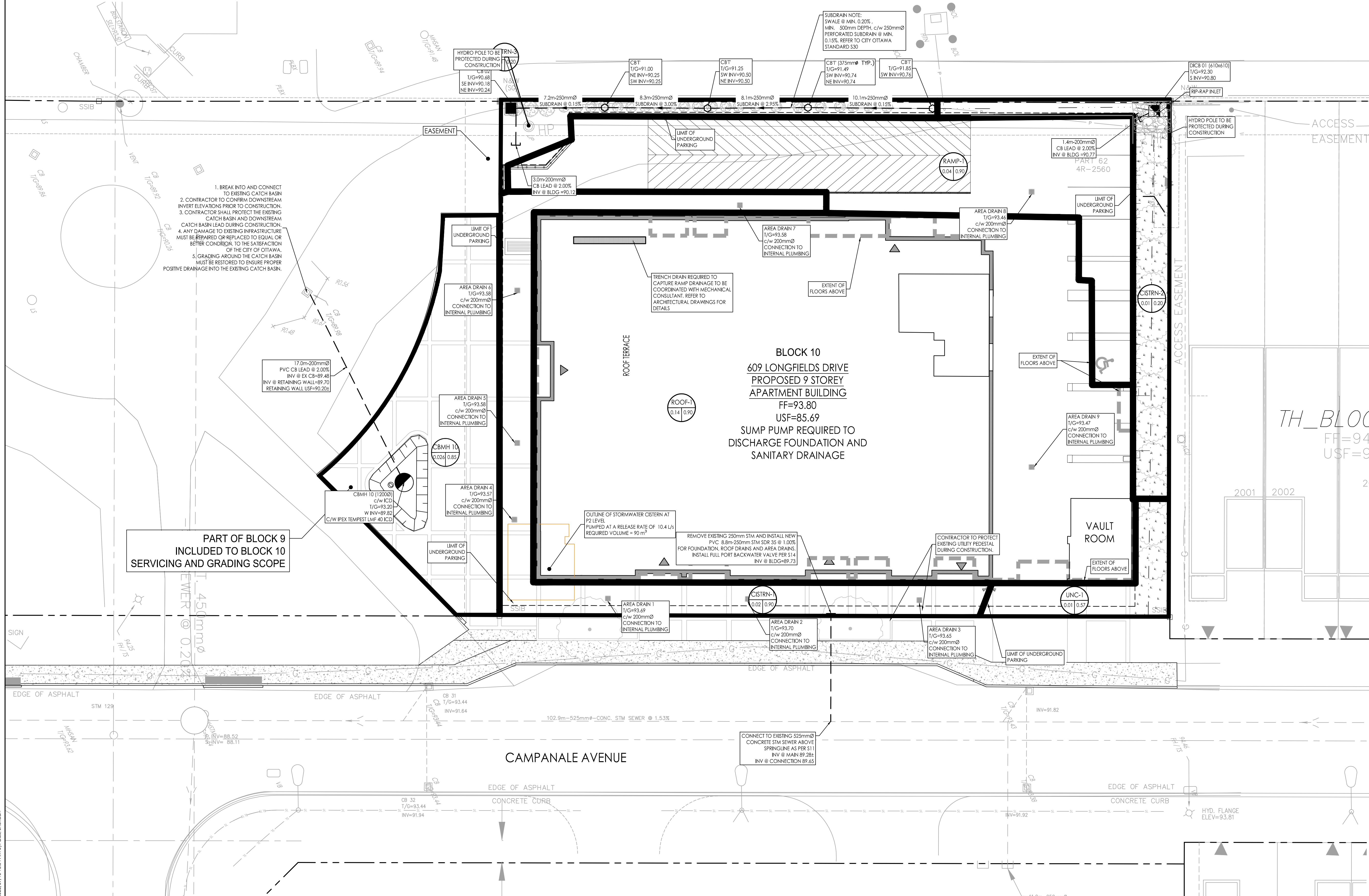
Sheet  
Revision

SD-1

6 of 7

6

DWG# 19161



\\scs\1\160401885\Design\Drawings\160401885-SD1.dwg  
20250910 10:54:49 AM J. Wildman

ORIGINAL SHEET - ARCH-D