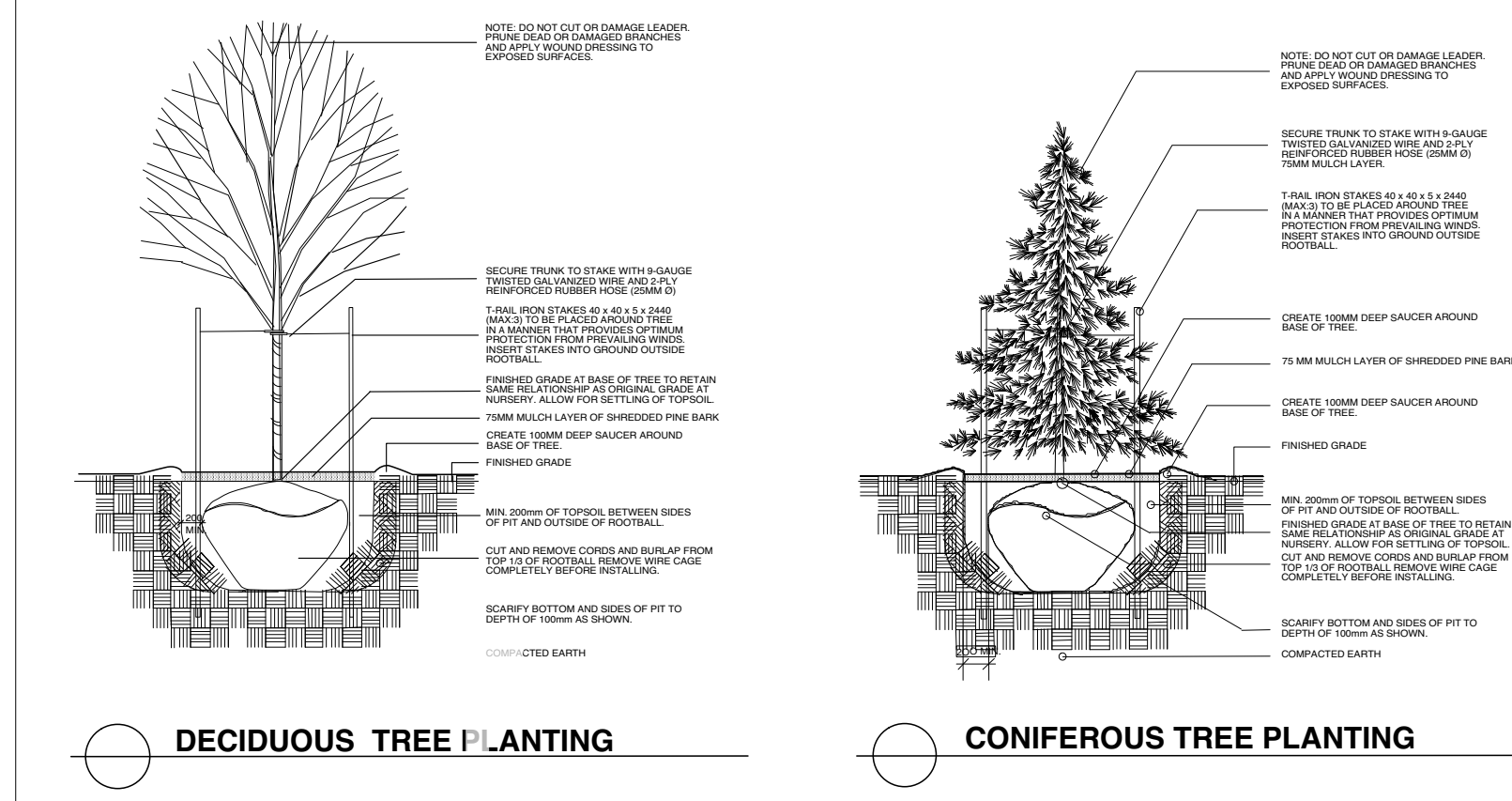


PLANT LIST								
KEY	NO.	BOTANIC NAME	ENGLISH NAME	SIZE	CONDIT.	REMARKS	TYPE	MIN. SOIL VOLUME/TREE
PS	0	Pinus strobus	White Pine	2.0m ht	B & B	Well branched	Large Coniferous Tree	
PG	5	Picea glauca	White Spruce	2.0m ht	B & B	Well branched	Large Coniferous Tree	Min. topsoil vol 20 cu.m
AS	6	Acer saccharum	Green Mountain	60mm. cal	B & B	Well branched	Large Deciduous Tree	Min. topsoil vol 25 cu.m
AR	0	Acer rubrum	Red Maple	60mm. cal	B & B	Well branched	Large Deciduous Tree	
GT	0	Gleditsia triacanthos	Sunburst Honeylocust	60mm. cal	B & B	Well branched	Large Deciduous Tree	
AL	0	Amelanchier laevis	Allegheny Serviceberry	30mm cal	Potted	Standard, full crown	Small Deciduous Tree	
SV	15	Syringa vulgaris	Common Lilac	11.5m ht	Potted	Bushy	Large Deciduous Shrub	Min. topsoil vol 8 cu.m
RR	54	Rosa rugosa	Rugosa Rose	0.8	Potted	Bushy Multi Stemmed	Medium Deciduous Shrub	Min. topsoil vol 8 cu.m
NF	40	Nepeta fassenii	Walkers Low Catmint	2 yr old	Container	Full form	Perennial	
RG	0	Rudbeckia fulgida	Goldsturm Blackeyed Susan	2 yr old	Container	Full form	Perennial	
GR	50	Geranium 'Rozanne'	Rozanne Geranium	2 yr old	Container	Full form	Perennial	
JA	0	Helianthus tuberosus	Jerusalem Artichoke	2 yr old	Container	Plump tubers	Perennial	

NOTE RE EXISTING VEGETATION:
THERE ARE NO EXISTING TREES ON THIS SITE, AS SUCH NO EXISTING VEGETATION WILL BE RETAINED

TREE CANOPY COVERAGE:
TOTAL BLOCK 10 SITE AREA APPROX 2315 M2
TOTAL TREE CANOPY IN 40 YEARS: 6 DECIDUOUS TREES @ 38.45 M2 X 6 = 230 M2 (10% APPROX)

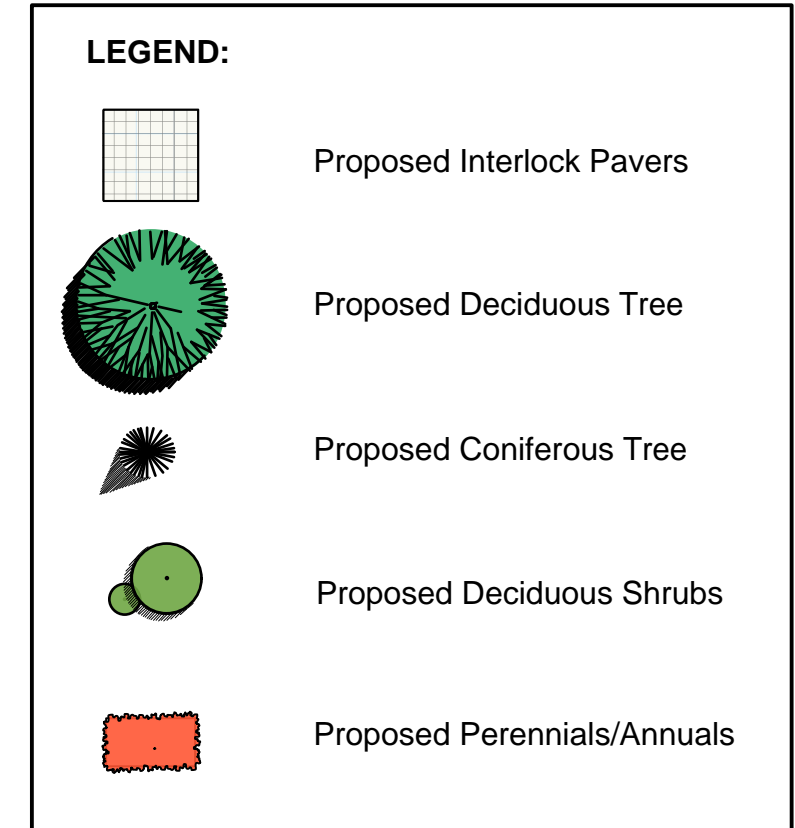
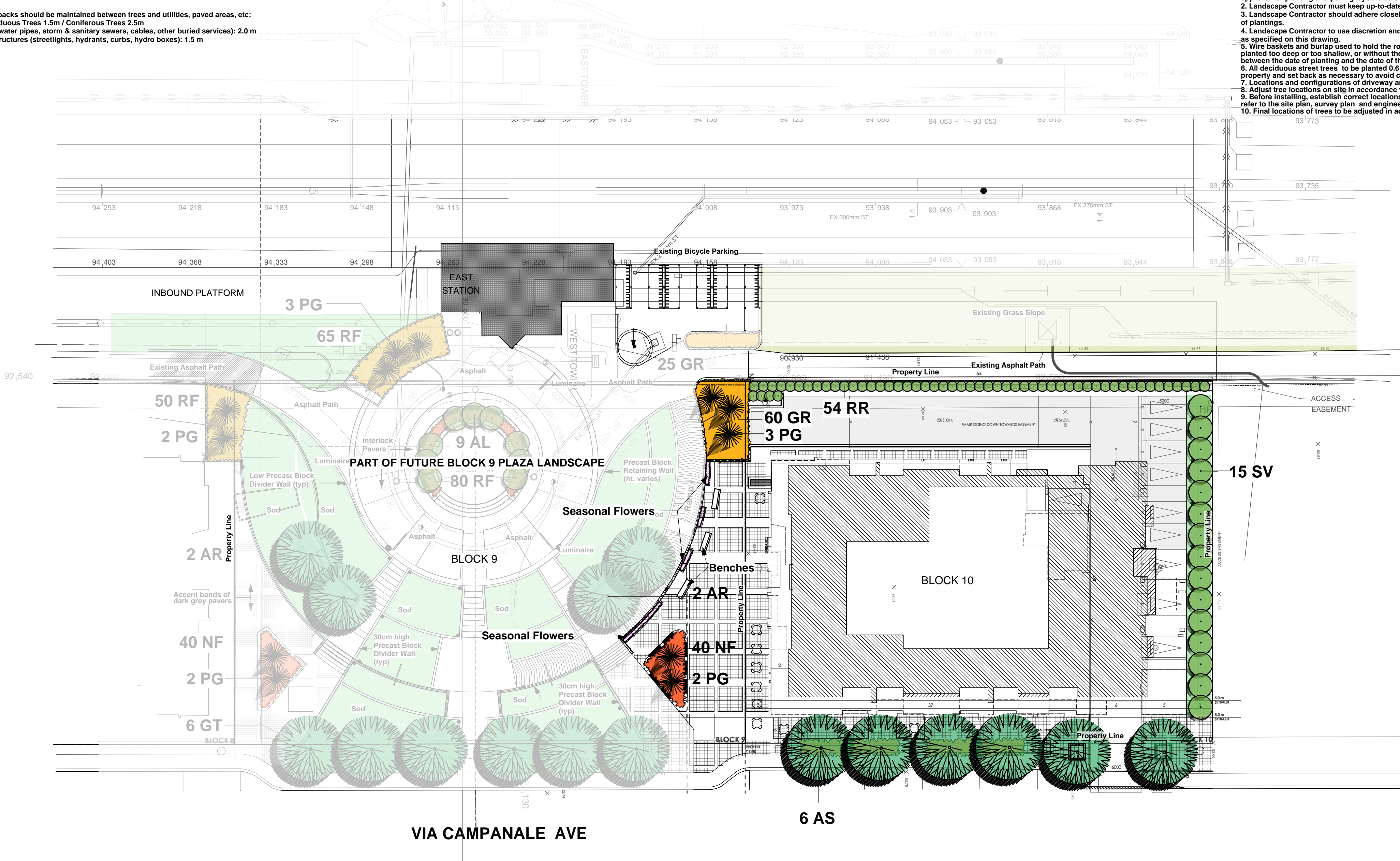


- NOTES:**
- Landscape Contractor must advise Project Landscape Architect of the start of construction min. 48 hours by email prior to commencement of work, and obtain approval for planting and paving layouts before installation.
 - Landscape Contractor must keep up-to-date record of all changes to landscape installations, including planting, paving and site furniture placement.
 - Landscape Contractor should adhere closely to organic and geometric layouts as shown on landscape plan to ensure optimum spacing, display and display of plantings.
 - Landscape Contractor to use discretion and judgement and reject trees or plants on site which do not meet minimum size, shape and branch growth criteria as specified on this drawing.
 - Wire baskets and burlap used to hold the root ball and rope that is tied around the root collar are to be removed at the time of the planting of the trees, trees planted too deep or too shallow, or without the baskets and ropes removed, may be rejected at the time of the inspection regardless of the length of time between the date of planting and the date of the inspection.
 - All deciduous street trees to be planted 0.6 m away from property line and 1.5 m away from any adjacent driveway, coniferous trees to be planted on private property and set back as necessary to avoid conflicts sightlines, especially at daylight triangles.
 - Locations and configurations of driveway and unit footprints are schematic only.
 - Adjust tree locations on site in accordance with utility and easement locations.
 - Before installing, establish correct locations of plant material and fencing on site by checking locations of access easements and other minimum clearances. refer to the site plan, survey plan, and engineering drawings prepared by others.
 - Final locations of trees to be adjusted in accordance with building and driveway locations on site.

Setbacks
The following setbacks should be maintained between trees and utilities, paved areas, etc.:
- Driveways: Deciduous Trees 1.5m / Coniferous Trees 2.5m
- Buried Utilities (water pipes, storm & sanitary sewers, cables, other buried services): 2.0 m
- Aboveground Structures (streetlights, hydrants, curbs, hydro boxes): 1.5 m



CAMPANALE HOMES
200-1187 Bank Street, Ottawa
Ontario K1S 3X7
Tel. 613 730-7000



NOTES:

GENERAL:

- 1:50 SCALE THIS DRAWING.
- THIS DRAWING IS TO BE READ IN CONJUNCTION WITH RELATED ARCHITECTURAL AND ENGINEERING DRAWINGS.
- IT IS THE RESPONSIBILITY OF THE APPLICANT/CONTRACTOR TO CHECK AND VERIFY ALL DIMENSIONS ON SITE AND REPORT ALL ERRORS AND/OR OMISSIONS TO THE LANDSCAPE ARCHITECT BEFORE PROCEEDING WITH WORK.
- CONTRACTOR MUST OBTAIN AND COMPLY WITH ALL PERTINENT CODES AND BY-LAWS. ALL PERMITS ARE THE RESPONSIBILITY OF THE CONTRACTOR.
- THIS DRAWING MUST NOT BE USED FOR CONSTRUCTION UNLESS SIGNED BY THE LANDSCAPE ARCHITECT.
- COPYRIGHT RESERVED THIS DRAWING IS THE EXCLUSIVE PROPERTY OF THAKAR ASSOCIATES DESIGN CONSULTANTS AND SHALL NOT BE USED FOR ANY PUBLISHED OR UNPUBLISHED WORK WITHOUT THE WRITTEN CONSENT OF THAKAR ASSOCIATES.
- CONTRACTOR SHALL NOTIFY LANDSCAPE ARCHITECT BY PHONE AND FAX AT LEAST 24 HOURS IN ADVANCE OF THE COMMENCEMENT OF DEMOLITION WORK, REMOVAL OF EXISTING VEGETATION AND THE START OF NEW CONSTRUCTION.
- BASE INFORMATION TAKEN FROM DRAWINGS SUPPLIED BY THE CAMPANALE GROUP.

SITE LAYOUT:

1. CONTRACTOR TO STAKE OUT SITE ELEMENTS AND OBTAIN APPROVAL OF LANDSCAPE ARCHITECT BEFORE COMMENCING WORK.
- ALL HORIZONTAL DIMENSIONS ARE SHOWN IN METRES AND MILLIMETRES.
- PREMANUFACTURED ITEMS TO BE INSTALLED AS PER MANUFACTURER'S INSTRUCTIONS. ALL FENCING IS TO BE INSTALLED 0.3M INSEPARATE PROPERTY PARALLEL TO THE PROPERTY LINE UNLESS OTHERWISE INDICATED.

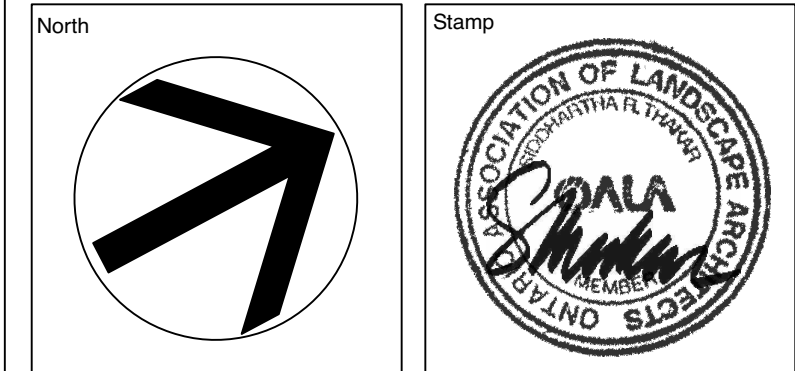
DEMOLITION:

- ALL EXISTING AREAS AND/OR ITEMS INDICATED FOR DEMOLITION AND REMOVAL ARE TO BE REMOVED FROM SITE.
- DEMOLITION OF RUBBLE OR RUBBISH IS TO BE REMOVED FROM SITE. BACKFILLING OF RUBBLE WILL NOT BE ACCEPTED. ITEMS TO BE REMOVED INCLUDE ASSOCIATED WIRING, PIPING, FOOTINGS, AND GRANULAR SUBGRADES UNLESS INDICATED ON THE DRAWINGS AS ITEMS TO BE RETAINED.
- TREES AND SHRUBS INDICATED TO BE REMOVED ARE ALSO TO BE GRUBBED OUT, INCLUDING STUMPS AND ROOTS, TO A MINIMUM OF 300 MM BELOW GRADE.
- ALL AREAS, ITEMS OR STRUCTURES DESIGNATED FOR REMOVAL ON SITE ARE TO BE REINSTALLED, REPLACED OR REPAIRED AT THE LANDSCAPE ARCHITECT'S OPTION AND TO THE LANDSCAPE ARCHITECT'S SATISFACTION SHOULD THESE BE DAMAGED OR DISTURBED DURING CONSTRUCTION.

PLANTING/SODDING:

- THE CONTRACTOR IS TO VERIFY THE LOCATION OF ALL UNDERGROUND UTILITIES PRIOR TO COMMENCING WORK. PLANTING WHICH CONFLICTS WITH UNDERGROUND UTILITIES IS TO BE RELOCATED AT THE DIRECTION OF THE LANDSCAPE ARCHITECT.
- ALL TREE SPECIES, TREES OR SHRUBS TO BE PLANTED WITHIN THE MUNICIPAL BOUNDARY AT A DISTANCE OF 0.6M FROM THE PROPERTY LINE.
- NO PLANT MATERIALS SUBSTITUTIONS WILL BE ACCEPTED WITHOUT PRIOR APPROVAL FROM THE LANDSCAPE ARCHITECT.
- ALL PLANT MATERIAL IS TO BE NURSERY GROWN STOCK AND SHALL MEET OR EXCEED THE SPECIFICATIONS OF THE CANADIAN NURSERY TRADES ASSOCIATION (1995) FOR SIZE, HEIGHT, GRADE AND METHOD OF CULTIVATION.
- ALL EXCAVATED MATERIAL FROM PLANTING PITS TO BE REMOVED FROM SITE. BACKFILL SHALL BE INSTALLED WITH APPROVED TOPSOIL, OR STOCKPILED TOPSOIL ON SLOPING AND SEEDING TO BE INSTALLED ON MINIMUM 135 MM AND 150 MM DEEP LAYERS RESPECTIVELY OF PREPARED IMPORTED TOPSOIL.
- ALL SHRUBS TO BE INSTALLED IN BEDS (EXCEPT ON SLOPES) WITH MINIMUM DEPTH OF 300 MM AND MULCHED WITH 75 MM MINIMUM LAYER OF SHREDED FINE BARK MULCH UNLESS OTHERWISE SPECIFIED.
- ALL TREES TO BE STAKED ACCORDING TO THE STANDARDS INDICATED ON THE PLANTING DETAILS.
- ALL AREAS DISTURBED DURING CONSTRUCTION, BEYOND THE PROJECT LIMITS, ARE TO BE RESTORED TO ORIGINAL CONDITIONS AND ADJUSTED TO MEET THE DESIGN INTENT.
- ALL PLANT MATERIAL AND GRASS AREAS INSTALLED UNDER THIS CONTRACT SHALL BE MAINTAINED, WEEDED AND MANAGED BY THE CONTRACTOR UNTIL WRITTEN ACCEPTANCE OF THE WORK BY THE LANDSCAPE ARCHITECT.
- ARRANGEMENT AND SPACING OF PLANT MATERIAL ON SITE TO BE IN ACCORDANCE WITH GOOD HORTICULTURAL PRACTICES AND AESTHETIC CRITERIA. CONTRACTOR TO ENSURE THAT SPACING AND POSITIONS OF PLANTS ARE OPTIMIZED FOR BEST VISUAL DISPLAY AND UTILITIES OF SHRUB BEDS AND OTHER AREAS ARE SMOOTH, UNIFORM AND SENSITIVE TO THE DESIGN INTENT.

4.	Revised/Interim Block 10 Munic. Submission	Dec. 24/24
3.	Municipal Submission	July 15/24
2.	Site Plan updates	June 28/24
1.	Client Review	June 13/24
No.	Revision	Date



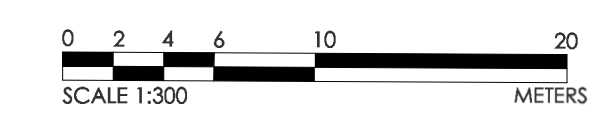
THAKAR ASSOCIATES
DESIGN CONSULTANTS
Landscape Architects
54 Bennett Street, Ottawa Ontario K1V 9L4
Tel: (613) 523-7602 Fax: (613) 523-2262
E-mail: mail@thakarassociates.com



Consultants
Planning: FOTENN
Architects: Woodman Architect & Associates Ltd.
Structural: D+M Structural Ltd
Civil: Stantec
Mechanical: Jain Consultants
Noise: Gradient Wind Engineering Inc.
Infrastructure: Parsons

Project
BLOCKS 9 & 10,
609 LONGFIELDS DR.
NEPEAN, BARRHAVEN EAST - OTTAWA

Dwg. Title	
INTERIM LANDSCAPE PLAN	
Drawn	STAFF
Scale	1:300
Job No.	288.10
Start Date	
Dwg. No.	L - 1



D07-12-24-0068