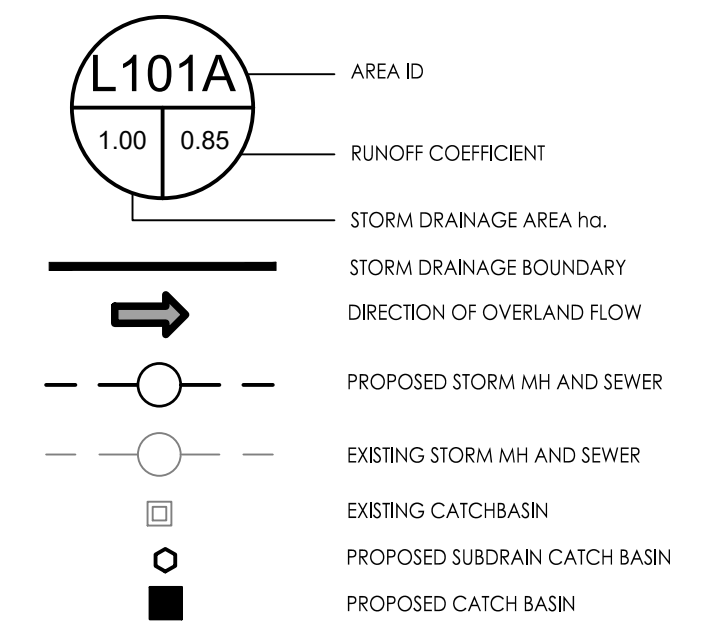


Copyright Reserved

The Contractor shall verify and be responsible for all dimensions. DO NOT scale the drawing - any errors or omissions shall be reported to Stantec without delay.
The Copyrights to all designs and drawings are the property of Stantec. Reproduction or use for any purpose other than that authorized by Stantec is forbidden.

Legend



Notes

- INTERNAL PLUMBING AND SUMP PUMPS TO BE DESIGNED BY THE MECHANICAL CONSULTANT.
- STORMWATER MANAGEMENT TO BE PROVIDED THROUGH A CISTERN. FINAL CISTERN LOCATION AND ASSOCIATED OVERFLOW TO BE COORDINATED WITH ARCHITECT AND MECHANICAL CONSULTANT.
- BUILDING CISTERN = 80.0m³ AND RELEASE RATE 10.4L/s PUMP RATE
- TOTAL PERMITTED RELEASE RATE FROM SITE = 13 L/S
- TOTAL POST DEVELOPMENT RELEASE RATE FROM SITE= 13 L/S (100 YR)

Revision	By	Appd.	YY.MM.DD
2	JP	D1/SGG	25.01.14
1	JP	D1	24.07.15

File Name:	JP	SGG/MW	JP	24.07.10
160401885-D81.dwg	Dwn.	Chkd.	Dgn.	YY.MM.DD

Permit-Seal

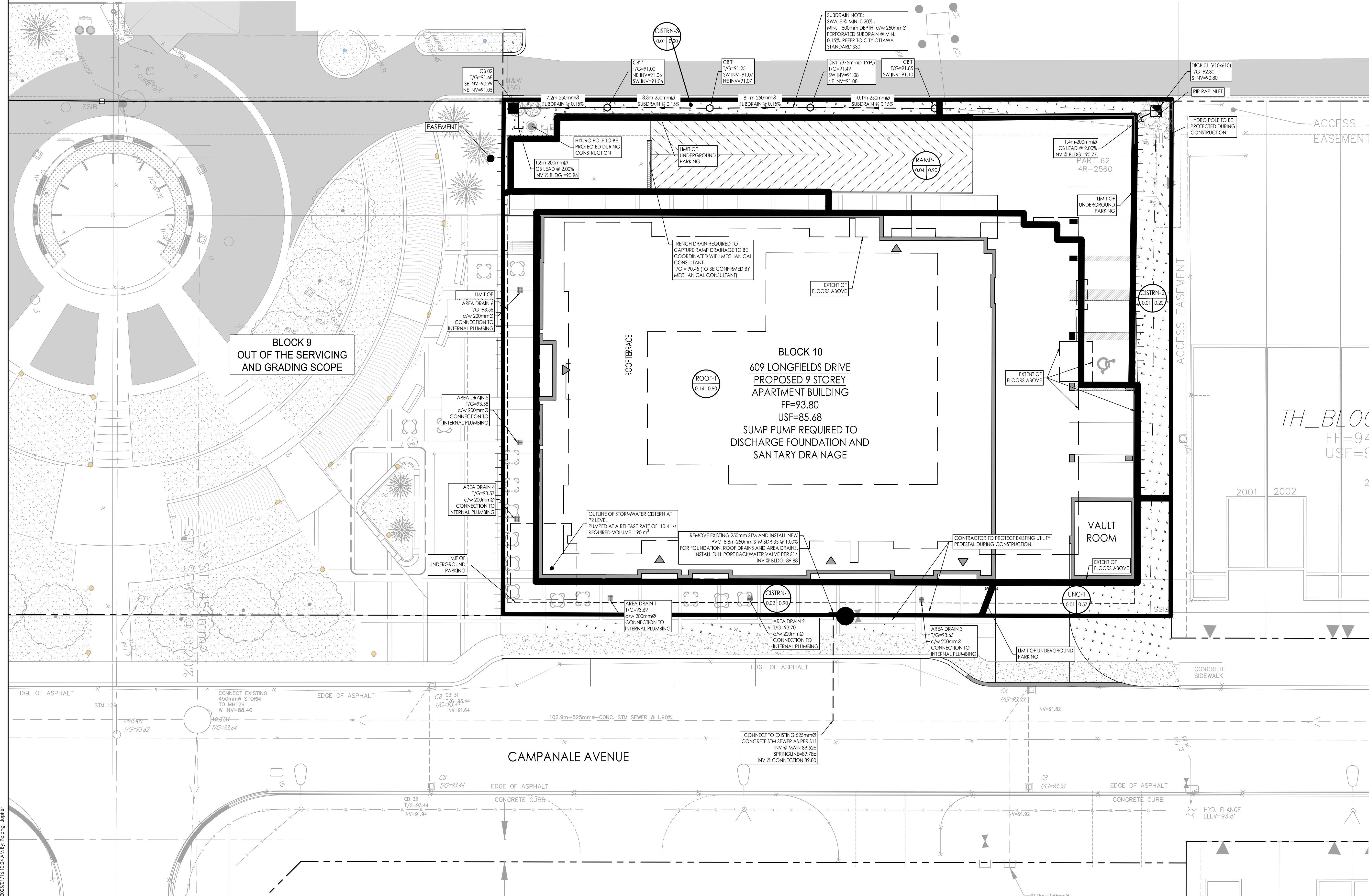
Client/Project
CAMPANALE HOMES
200 - 1187 Bank Street, Ottawa, ON
609 LONGFIELDS DRIVE
BLOCK 10
Ottawa, ON

Title

STORM DRAINAGE PLAN

Project No.	Scale
160401885	0 1.5 4.5 7.5m 1:150

Drawing No.	Sheet	Revision
SD-1	6 of 7	2



BLOCK 9
OUT OF THE SERVICING
AND GRADING SCOPE

BLOCK 10
609 LONGFIELDS DRIVE
PROPOSED 9 STOREY
APARTMENT BUILDING
FF=93.80
USF=85.68
SUMP PUMP REQUIRED TO
DISCHARGE FOUNDATION AND
SANITARY DRAINAGE

VAULT ROOM

CAMPANALE AVENUE

X:\Projects\160401885-Camp-Homes\Drawings\160401885-D81.dwg
2025/07/10 10:24 AM SGG