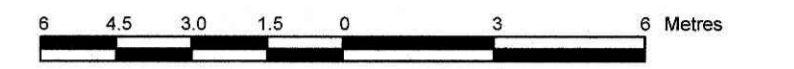


SURVEYOR'S REAL PROPERTY REPORT
PART 1 Plan of
LOT 1
REGISTERED PLAN 268160
CITY OF OTTAWA

Surveyed by Annis, O'Sullivan, Vollebek Ltd.
 Scale 1 : 150



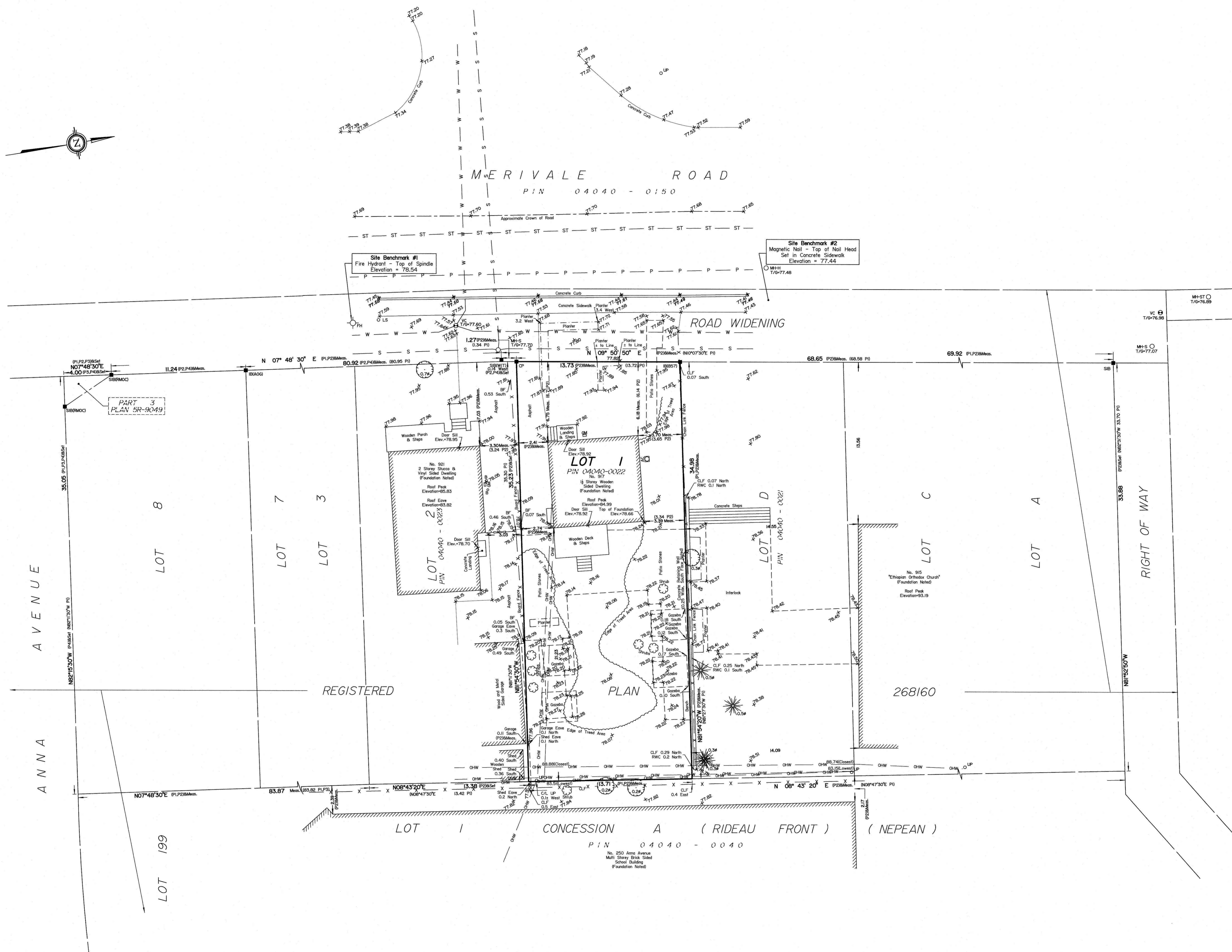
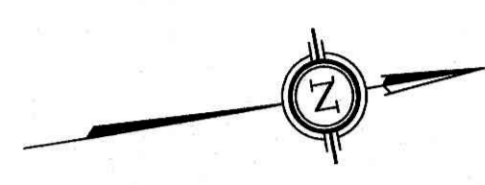
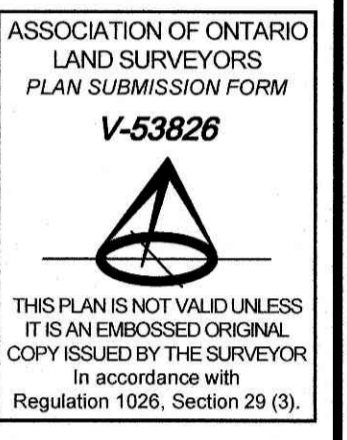
Metric
 DISTANCES SHOWN ON THIS PLAN ARE IN METRES AND
 CAN BE CONVERTED TO FEET BY DIVIDING BY 0.3048

Surveyor's Certificate
 I CERTIFY THAT:
 1. This survey and plan are correct and in accordance with the Surveys Act and the Surveyors Act and the regulations made under them.
 2. The survey was completed on the 7th day of July, 2023.

July 7, 2023
 Date
 T. Hartwick
 Ontario Land Surveyor

PART 2
 THIS PLAN MUST BE READ IN CONJUNCTION WITH
 SURVEY REPORT DATED: July 7, 2023

ANNIS, O'SULLIVAN, VOLLEBEK LTD. grants to Marc Amyot ("The Client"), their solicitors, mortgagees, and other related parties, permission to use original, signed, sealed copies of the Surveyor's Real Property Report in transactions involving The Client.



Notes & Legend

□	Denotes	Survey Monument Planted
—	Survey Monument Found	
SIB	Standard Iron Bar	
SSIB	Short Standard Iron Bar	
IB	Iron Bar	
CP	Concrete Pin	
(WIT)	Witness	
Meas.	Measured	
(AOG)	Annis, O'Sullivan, Vollebek Ltd.	
(P1)	Registered Plan 268160	
(P2)	(857) Plan dated July 30, 1996	
(P3)	Plan SR-9049	
(P4)	(AOG) Plan dated April 25, 1988	
CLF	Chain Link Fence	
BF	Board Fence	
RWC	Retaining Wall - Concrete	
CL	Centreline	
T/G	Top of Gate	
CB	Catch Basin	
MH-ST	Maintenance Hole (Storm Sewer)	
MH-S	Maintenance Hole (Sanitary)	
MH-H	Maintenance Hole (Hydro)	
VC	Valve Chamber (Watermain)	
ST	Underground Storm Sewer	
S	Underground Sanitary Sewer	
W	Underground Water	
P	Underground Power	
OHW	Overhead Wires	
FH	Fire Hydrant	
UP	Utility Pole	
AN	Anchor	
LS	Light Standard	
AC	Air Conditioner	
HM	Hydro Meter	
GM	Gas Meter	
B	Bollard	
G	Gate	
DT	Deciduous Tree	
CT	Coniferous Tree	
Ø	Diameter	
78.00	Location of Elevations	
78.00	Location of Top of Curb Elevations	
78.00	Location of Top of Wall Elevations	

Bearings are grid, derived from Can-Net 2016 Real Time Network GPS observations and are referenced to Specified Control Points 01919680005 and 01919680105, MTM Zone 9 (76°30' West Longitude) NAD-83 (original).

For bearing comparisons, a rotation of 1°06'30" counter-clockwise was applied to bearings on plans (P1), (P2) and (P4).

ELEVATION NOTES

- Elevations shown are geodetic and are referred to the CGVD28 geodetic datum, derived from City of Ottawa Benchmark Index No. 55.
- It is the responsibility of the user of this information to verify that the job benchmark has not been altered or disturbed and that its relative elevation and description agrees with the information shown on this drawing.

UTILITY NOTES

- This drawing cannot be accepted as acknowledging all of the utilities and it will be the responsibility of the user to contact the respective utility authorities for confirmation.
- Only visible surface utilities were located.
- Underground utility data derived from City of Ottawa utility sheet reference G-06-07.
- A field location of underground plant by the pertinent utility authority is mandatory before any work involving breaking ground, probing, excavating etc.