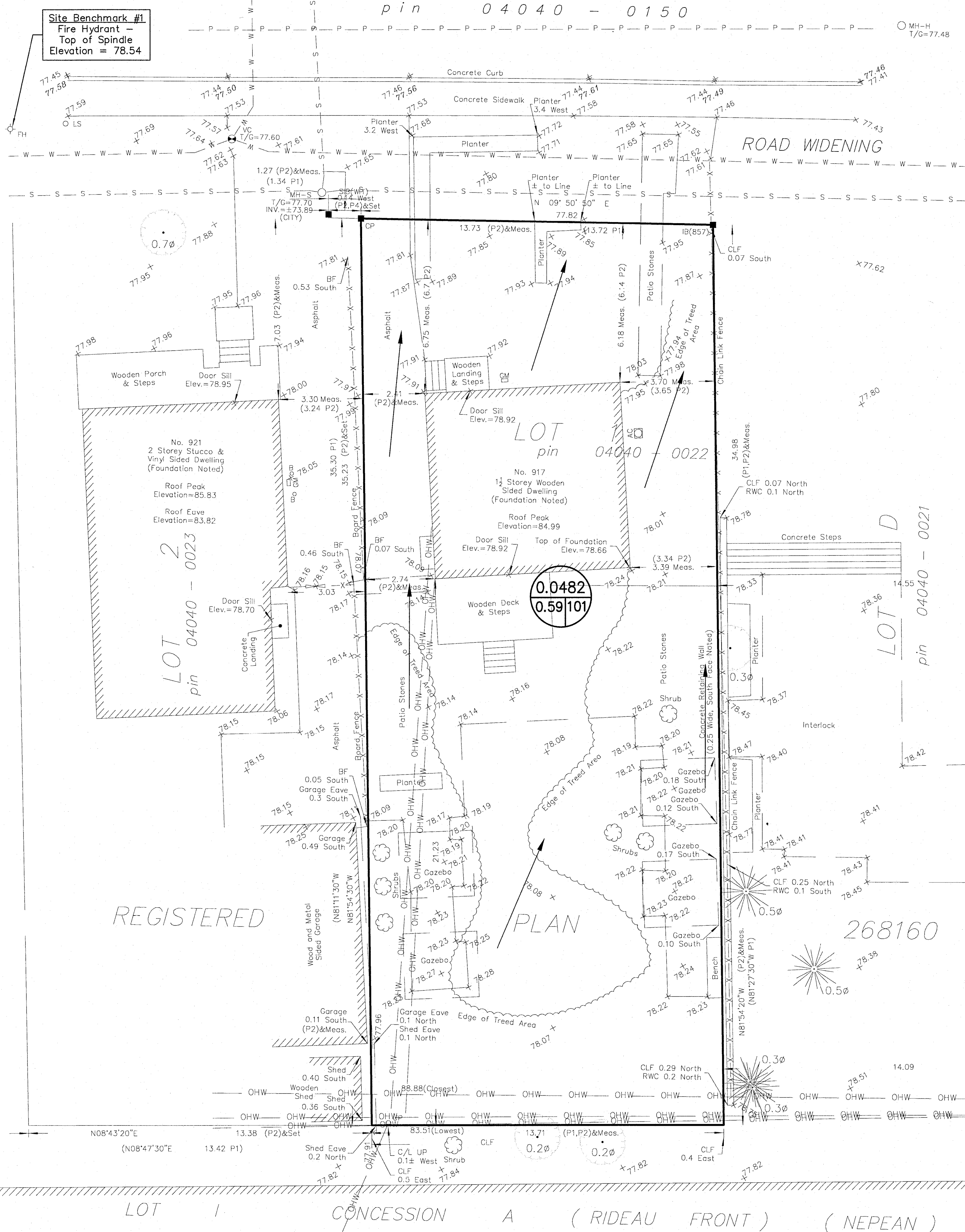


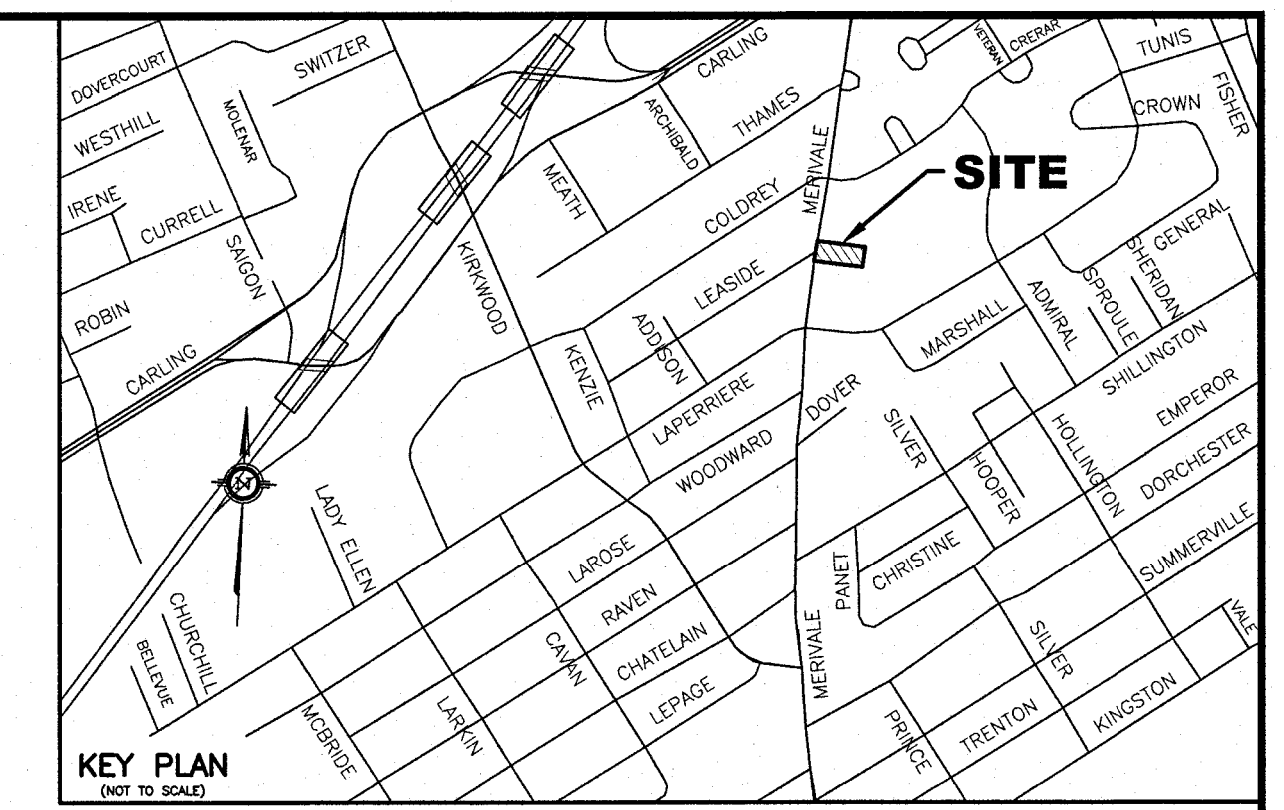
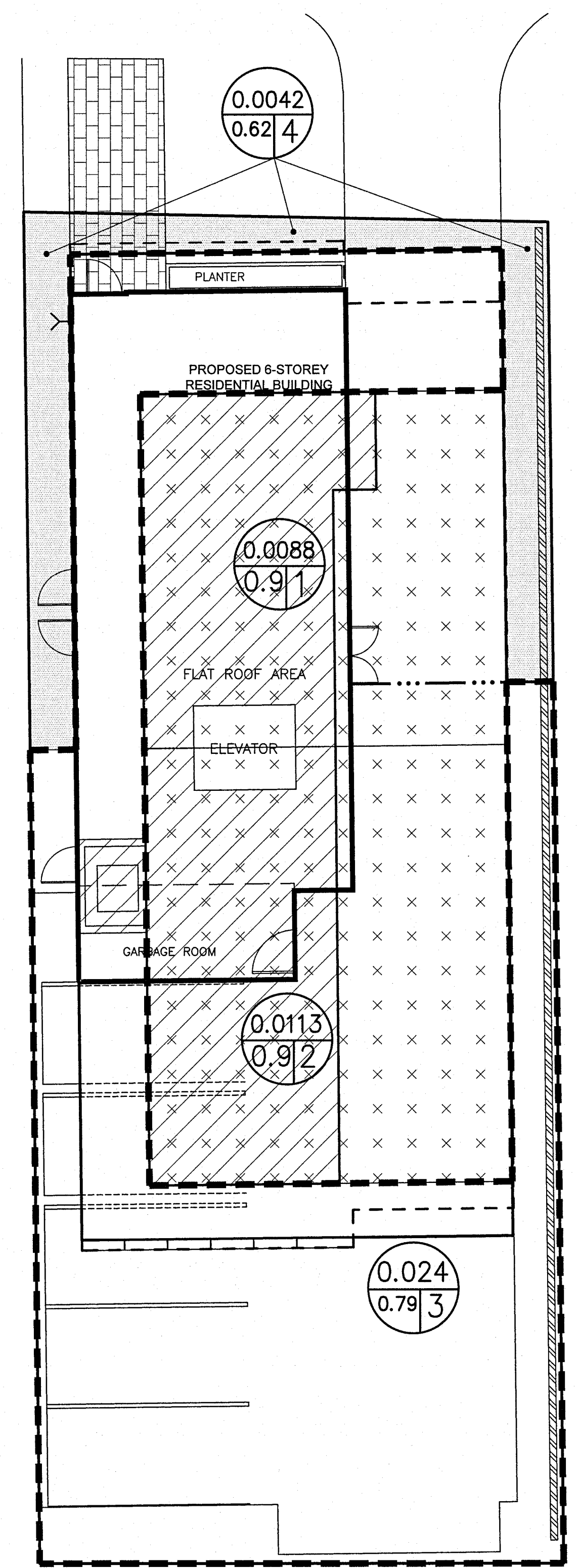
PRE - DEVELOPMENT STORM DRAINAGE AREA

MERIVALE ROAD
pin 04040 - 0150



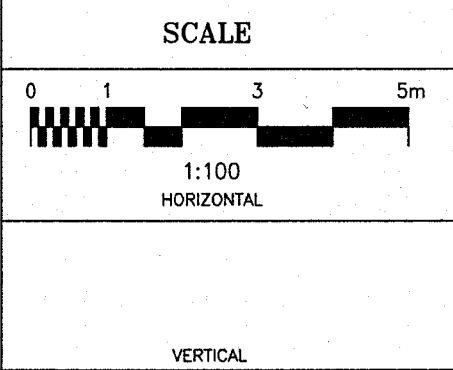
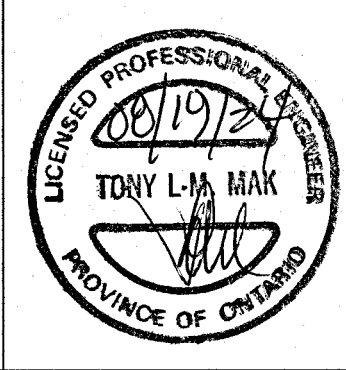
POST DEVELOPMENT STORM DRAINAGE AREA

MERIVALE ROAD



- LEGEND**
- RD#1 PROPOSED ROOF DRAIN NUMBER AND LOCATION
 - SC PROPOSED ROOF SCUPPER LOCATION
 - — — PROPOSED HIGH RIDGE LINE
 - 0.03 DRAINAGE AREA IN HECTARES
 - 0.91 DRAINAGE NODE NUMBER
 - COEFFICIENT OF RUNOFF
 - UN-CONTROLLED DRAINAGE AREA
 - CONTROLLED DRAINAGE AREA
 - — — DENOTES LIMIT OF CONTROLLED DRAINAGE AREA

- NOTES**
- NODE #1 AND NODE #2 REPRESENTS BUILDING ROOF AREA (SWM CONTROLLED AREA) AND NODE #3 REPRESENTS CONTROLLED SITE DRAINAGE AREA
 - NODE #4 REPRESENTS UNCONTROLLED DRAINAGE AREA
 - NODE #101 REPRESENTS PRE-DEVELOPMENT DATA.



DESIGN	T.L.M.
CHECKED	T.L.M.
DRAWN BY	P.M.
CHECKED	T.L.M.
APPROVED	T.L.M.

PROJECT
**917 MERIVALE ROAD
LOT 1
REGISTERED PLAN 268160
CITY OF OTTAWA**

DRAWING TITLE
STORM DRAINAGE AREA PLAN

<p>T.L. MAK ENGINEERING CONSULTANTS LTD. CONSULTING ENGINEERS</p>		
PROJECT No.	DATE	DRAWING No.
823-102	JULY 2024	D-1

NO.	REVISION	DATE	BY