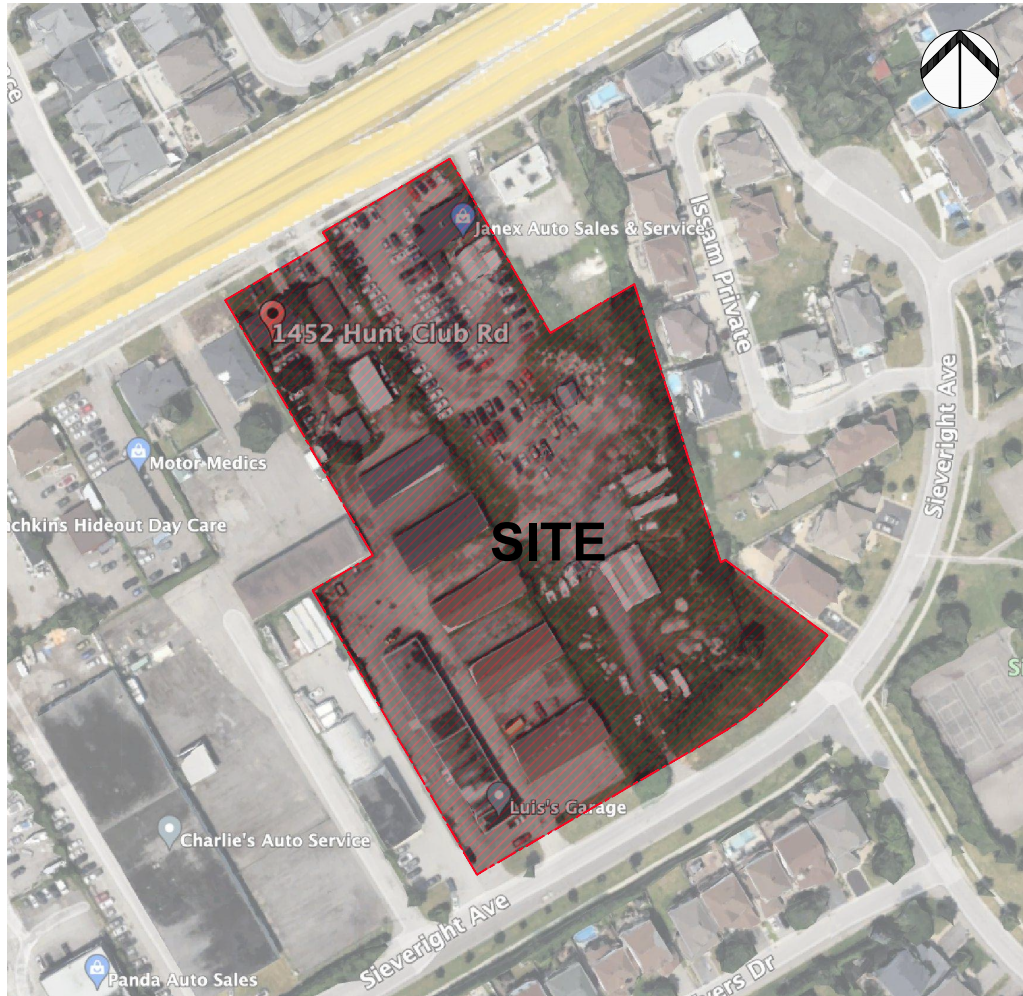


KEY MAP (NTS):



LEGEND

- PROPOSED DECIDUOUS TREE
- 20, 25, or 30m3 SOIL VOLUME (SEE GENERAL NOTES)
- PROPOSED CONIFEROUS TREE
- 25m3 SOIL VOLUME
- PROPOSED SHRUBS
- PROPOSED CEDAR HEDGE
- PROPOSED SOD
- PROPOSED UNIT PAVING
- PROPOSED CONCRETE PAVING
- PROPOSED RIVERSTONE
- EXISTING TREE TO REMAIN
- GROUP OF EXISTING TREES TO REMAIN
- EXISTING TREE TO BE REMOVED
- EXISTING HEDGE TO BE REMOVED
- TREE PROTECTION FENCE
- PROPOSED 1500mm ORNAMENTAL METAL FENCE WITH GATE
- PROPOSED PICNIC TABLE
- PROPOSED BOLLARD LIGHT

GENERAL NOTES:

- It is the responsibility of the appropriate contractor or official to report any errors, omissions or discrepancies on this plan with actual site conditions to the Landscape Architect before proceeding with construction.
- The contractor is to notify all utility companies and authorities prior to any excavation and ascertain locations of underground services.
- The contractor is to reinstate all areas and items damaged as a result of construction activity.
- The contractor is to comply with all pertinent codes and by-laws.
- The contractor is to maintain a positive surface run-off throughout the entire construction period.
- The Landscape Architect is not responsible for subsurface conditions.
- The contractor is to identify all existing trees to remain on site with the Landscape Architect prior to construction.
- The contractor is to stake the proposed location of all plant material in conjunction with the Landscape Architect prior to excavation.
- Minimum distances for selected trees are as follows:
 - Building Foundations 7.5m
 - Sidewalks 1.5m
 - Public Streets 2.5m
 - Underground Infrastructure 2.0m
 - Watermain 2.0m
- All trees within 1m of underground utility trenches are to be excavated by hand.
- Remove all protective wrapping from tree trunks after installation.
- Staking of trees shall only be performed if necessary.
- Ensure that mulch is pulled back a min. distance of 75mm from base of tree trunk.
- Tree removal is not to take place between April 15th and August 15th during bird nesting season.
- Tree soil volumes are to be as follows:
 - 30m3 for large deciduous trees
 - 25m3 for evergreen and medium deciduous trees
 - 20m3 for small deciduous trees

PROPOSED PLANT LIST

KEY	QTY.	BOTANICAL NAME	COMMON NAME	SIZE	CONDITION	REMARKS	OWNERSHIP
TREES							
*AL	6	Tilia americana	Basswood	50mm cal.	B&B		1452 Hunt Club Road
CA	6	Malus 'Profusion'	Profusion Crabapple	50mm cal.	B&B		1452 Hunt Club Road
CS	5	Picea pungens	Colorado Spruce	2000mm ht.	B&B		1452 Hunt Club Road
GB	6	Ginkgo biloba	Maidenhair Tree	50mm cal.	B&B	Male tree	1452 Hunt Club Road
*HB	2	Celtis occidentalis	Hackberry	50mm cal.	B&B		1452 Hunt Club Road
*HL	4	Gleditsia triacanthos	Honeylocust	50mm cal.	B&B		1452 Hunt Club Road
JL	8	Syringa reticulata	Japanese Tree Lilac	50mm cal.	B&B		1452 Hunt Club Road
*RM	5	Acer rubrum	Red Maple	50mm cal.	B&B		1452 Hunt Club Road
*RO	8	Quercus rubra	Red Oak	50mm cal.	B&B		1452 Hunt Club Road
*SB	5	Amelanchier canadensis	Serviceberry	50mm cal.	B&B		1452 Hunt Club Road
*SB1	5	Amelanchier canadensis	Serviceberry	50mm cal.	B&B		1452 Hunt Club Road
*SM	12	Acer saccharum	Sugar Maple	50mm cal.	B&B		1452 Hunt Club Road
*WC	25	Thuja occidentalis	Eastern White Cedar	1500mm ht.	B&B		1452 Hunt Club Road
SHRUBS							
*Lg	20	Rhus aromatica 'Gro-low'	Low Grow Fragrant Sumac	600mm ht.	Potted	1200 mm o.c.	1452 Hunt Club Road
Mp	29	Pinus mugo	Mugo Pine	1500mm ht.	Potted	2000 mm o.c.	1452 Hunt Club Road
Ss	36	Sorbaria sorbifolia 'Sem'	Sem False Spirea	1200mm ht.	Potted	1500 mm o.c.	1452 Hunt Club Road
Cj	10	Juniperus horizontalis	Creeping Juniper	2 gallon pot	Potted	2000 mm o.c.	1452 Hunt Club Road
PERENNIALS AND GRASSES							
bl	111	Leymus arenarius	Blue Lyme Grass	250 mm pot	Potted	400 mm o.c.	1452 Hunt Club Roa
*of	112	Matteuccia struthiopteris	Ostrich Fern	250 mm pot	Potted	1200 mm o.c.	1452 Hunt Club Road
NOTES:							
*Native to Ontario							

EXISTING TREE LIST

KEY	QTY.	BOTANICAL NAME	COMMON NAME	SIZE	CONDITION	REMARKS	OWNERSHIP
AN	2	Acer negundo	Manitoba Maple	200mm DBH	GOOD	To remain	1470 Hunt Club Road
AP	2	Acer platanoides	Norway Maple	300mm DBH	GOOD	To remain	1470 Hunt Club Road
EC	*	Thuja occidentalis	Eastern White Cedar	150-250mm DBH	DEAD	To be removed	1460 Hunt Club Road
MA	*	Fraxinus spp.	Ash	100mm DBH	GOOD	To be removed	1450 Hunt Club Road
MM	*	Acer negundo	Manitoba Maple	100-170mm DBH	GOOD	To be removed	1470 Hunt Club Road
NO	1	Acer platanoides	Norway Maple	190mm DBH	GOOD	To remain	City of Ottawa
PD	2	Populus deltoides	Cottonwood Poplar	150mm DBH	GOOD	To be removed	1470 Hunt Club Road
PL	2	Acer platanoides	Norway Maple	250-400mm DBH	GOOD	To be removed	1460 Hunt Club Road
PN	1	Pinus nigra	Austrian Pine	150mm DBH	GOOD	To be removed	1470 Hunt Club Road
PT	2	Acer platanoides	Norway Maple	190-400mm DBH	GOOD	To be removed	1452 Hunt Club Road
RT	*	Rhus typhina	Staghorn Sumac	110-150mm DBH	GOOD	See plan	1470 Hunt Club Road
RO	1	Eleagnus angustifolia	Russian Olive	150mm DBH	GOOD	To be removed	1450 Hunt Club Road
SR	1	Syringa reticulata	Japanese Tree Lilac	110mm DBH	POOR	To remain	City of Ottawa
UA	1	Ulmus americana	American Elm	250mm DBH	GOOD	To remain	124 Issam Private
TO	*	Thuja occidentalis	Eastern White Cedar	150mm DBH	FAIR	To be removed	1531 Hunt Club Road
WC	8	Thuja occidentalis	Eastern White Cedar	300-350mm DBH	POOR-FAIR	To be removed	1450 Hunt Club Road
WP	1	Pinus strobus	White Pine	310mm DBH	DEAD	To be removed	1531 Hunt Club Road

APPROVED
By Lily Xu at 9:45 am, Dec 31, 2024

[Signature]

LILY XU, MCIP, RPP
MANAGER, DEVELOPMENT REVIEW SOUTH
PLANNING, DEVELOPMENT, AND BUILDING SERVICES
DEPARTMENT, CITY OF OTTAWA

CONTINUED LEGEND:

- PROPERTY LINE
- EXTENT OF BASEMENT
- LIMIT OF WORK
- PROPOSED PRIVACY FENCE
- PROPOSED GAZEBO
- EXISTING VEGETATION TO REMAIN

CLIENT:

CREVA GROUP

CONSULTANTS:

ARCHITECTS:

DTAH Architects Limited

50 Park Road
Toronto, Ontario
M4W 2N5

T 416 968 7908
F 416 968 0657
www.dtah.com

CIVIL ENGINEERS:

ARCADIS

SURVEYORS:

ANNIS, O'SULLIVAN, VOLLEBEKK LTD.

14 Carleton Place, Suite 300
Nepean, Ont. K2E 7S8
Phone: (613) 737-4880 / Fax: (613) 737-9519
Email: info@anniso.com
Lic. No. 20729-2, Landscaping, 2013-2016, 1, 2, 3, 4

40 YEAR CANOPY CALCULATION:

-19 964 m2 site area

-31 Large deciduous trees proposed (154m2 ea.)
6 medium trees proposed (79m2 ea.)
17 small trees proposed (7m2 ea) and 6 large coniferous trees proposed (79m2 ea)

=5,841 m2 canopy cover = 29.26% canopy cover

***Large deciduous tree calculated at 14m spread,**
medium deciduous trees at 10m spread,
small deciduous trees at 3m spread, large coniferous trees at 10m spread

11	REVISED AS PER CITY COMMENTS	12/13/2024	LC	JL
10	RE-ISSUED FOR SITE PLAN APPROVAL	11/19/2024	LC	JL
9	ISSUED FOR COORDINATION	09/27/2024	LC	JL
8	ISSUED PER PRE-CONSULTATION COMMENTS	07/04/2024	ML	JL
7	UPDATED PER NEW SITE PLAN	06/25/2024	ML	JL
6	ISSUED FOR DISCUSSION AND REVIEW	05/31/2024	CM	JL
5	ISSUED FOR COORDINATION	11/20/2023	LC	JL
4	ISSUED FOR COORDINATION	08/22/2023	CM	JL
3	ISSUED FOR DISCUSSION AND REVIEW	08/03/2023	CM	JL
2	ISSUED FOR DISCUSSION AND REVIEW	07/10/2023	CM	JL
1	ISSUED FOR DISCUSSION AND REVIEW	07/05/2023	CM	JL
No	Issue	Date	DR	CK

JAMES B. LENNOX & ASSOCIATES INC.
LANDSCAPE ARCHITECTS
3332 CARLING AVE. OTTAWA, ONTARIO K2H 5A8
Tel. (613) 722-5168 Fax. (1-866) 343-3942

PROJECT

1452 Hunt Club Road
Ottawa, ON K1T 1M6

DRAWING

TREE CONSERVATION REPORT & LANDSCAPE PLAN

STAMP

SCALE

AS SHOWN

START DATE

July 2023

PROJECT NO.

21DCR2165

DRAWING NO.

L.1

PLOT SIZE ARCH-D

