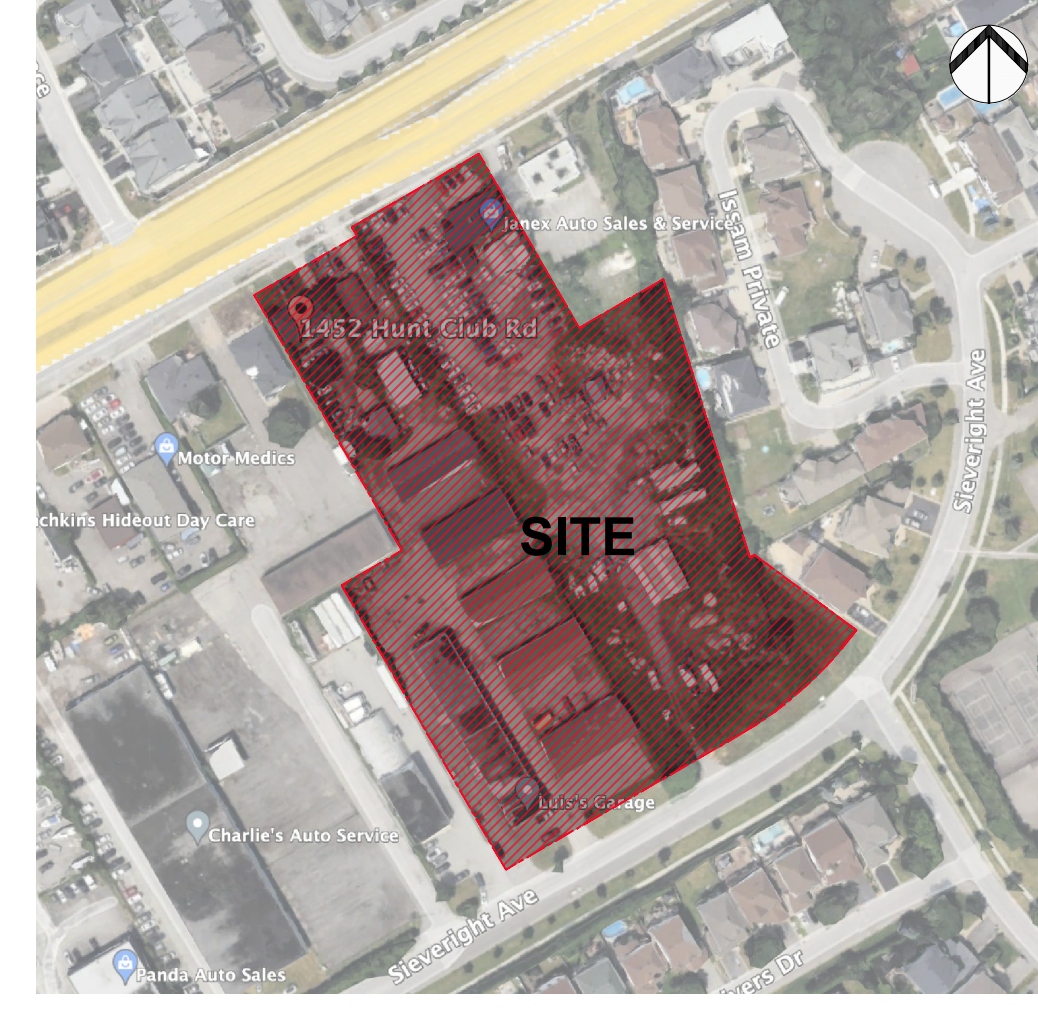


KEY MAP (NTS):



40 YEAR CANOPY CALCULATION:

- 19 964 m2 site area
- 31 Large deciduous trees proposed (154m2 ea.)
- 6 medium trees proposed (79m2 ea.) 17 small trees proposed (7m2 ea) and 6 large coniferous trees proposed (79m2 ea)
- =5,841 m2 canopy cover = 29.26% canopy cover

*Large deciduous tree calculated at 14m spread, medium deciduous trees at 10m spread, small deciduous trees at 3m spread, large coniferous trees at 10m spread

GENERAL NOTES:

- It is the responsibility of the appropriate contractor or official to report any errors, omissions or discrepancies on this plan with actual site conditions to the Landscape Architect before proceeding with construction.
- The contractor is to notify all utility companies and authorities prior to any excavation and ascertain locations of underground services.
- The contractor is to reinstate all areas and items damaged as a result of construction activity.
- The contractor is to comply with all pertinent codes and by-laws.
- The contractor is to maintain a positive surface run-off throughout the entire construction period.
- The Landscape Architect is not responsible for subsurface conditions.
- The contractor is to identify all existing trees to remain on site with the Landscape Architect prior to construction.
- The contractor is to stake the proposed location of all plant material in conjunction with the Landscape Architect prior to excavation.
- Minimum distances for selected trees are as follows:
 - Building Foundations 7.5m
 - Sidewalks 1.5m
 - Public Streets 2.5m
 - Underground Infrastructure 2.0m
 - Watermain 2.0m
- All trees within 1m of underground utility trenches are to be excavated by hand.
- Remove all protective wrapping from tree trunks after installation.
- Staking of trees shall only be performed if necessary.
- Ensure that mulch is pulled back a min. distance of 75mm from base of tree trunk.
- Tree removal is not to take place between April 15th and August 15th during bird nesting season.
- Tree soil volumes are to be as follows:
 - 30m3 for large deciduous trees
 - 25m3 for evergreen and medium deciduous trees
 - 20m3 for small deciduous trees

PROPOSED PLANT LIST

KEY	QTY.	BOTANICAL NAME	COMMON NAME	SIZE	CONDITION	REMARKS
TREES						
*AL	8	Tilia americana	Basswood	50mm cal.	B&B	
CA	6	Malus 'Profusion'	Profusion Crabapple	50mm cal.	B&B	
CS	6	Picea pungens	Colorado Spruce	2000mm ht.	B&B	
GB	6	Ginkgo biloba	Maidenhair Tree	50mm cal.	B&B	Male tree
*HB	2	Celtis occidentalis	Hackberry	50mm cal.	B&B	
*HL	6	Clethra tricuspidata	Honeylocust	50mm cal.	B&B	
JL	8	Syringa reticulata	Japanese Tree Lilac	50mm cal.	B&B	
*RM	3	Acer rubrum	Red Maple	50mm cal.	B&B	
*RO	2	Quercus rubra	Red Oak	50mm cal.	B&B	
*SB	3	Amelanchier canadensis	Serviceberry	50mm cal.	B&B	
*SM	12	Acer saccharum	Sugar Maple	50mm cal.	B&B	
*WC	25	Thuja occidentalis	Eastern White Cedar	1500mm ht.	B&B	
SHRUBS						
*Lg	30	Rhus aromatica 'Gro-low'	Low Grow Fragrant Sumac	600mm ht.	Potted	1200 mm o.c.
Mp	31	Pinus mugo	Mugo Pine	1500mm ht.	Potted	2000 mm o.c.
Ss	36	Sorbaria sorbifolia 'Sem'	Sem False Spirea	1200mm ht.	Potted	1500 mm o.c.
Cj	10	Juniperus horizontalis	Creeping Juniper	2 gallon pot	Potted	2000 mm o.c.
PERENNIALS AND GRASSES						
bl	111	Leymus arenarius	Blue Lyme Grass	250 mm pot	Potted	400 mm o.c.
*of	112	Matteuccia struthiopteris	Ostrich Fern	250 mm pot	Potted	1200 mm o.c.

EXISTING TREE LIST

KEY	QTY.	BOTANICAL NAME	COMMON NAME	SIZE	CONDITION	REMARKS	OWNERSHIP	
							ON PROPERTY	OFF PROPERTY
AN	2	Acer negundo	Manitoba Maple	200mm DBH	GOOD	To remain	1470 Hunt Club Road	
AP	2	Acer platanoides	Norway Maple	300mm DBH	GOOD	To remain	1470 Hunt Club Road	
EC	*	Thuja occidentalis	Eastern White Cedar	150-250mm DBH	DEAD	To be removed	1480 Hunt Club Road	
MA	*	Fraxinus spp.	Ash	100mm DBH	GOOD	To be removed	1450 Hunt Club Road	
MM	*	Acer negundo	Manitoba Maple	100-170mm DBH	GOOD	To be removed	1470 Hunt Club Road	
NO	1	Acer platanoides	Norway Maple	190mm DBH	GOOD	To remain	City of Ottawa	
PD	2	Populus deltoides	Cottonwood Poplar	150mm DBH	GOOD	To be removed	1470 Hunt Club Road	
PL	2	Acer platanoides	Norway Maple	250-400mm DBH	GOOD	To be removed	1480 Hunt Club Road	
PN	1	Pinus nigra	Austrian Pine	150mm DBH	GOOD	To be removed	1470 Hunt Club Road	
PT	2	Acer platanoides	Norway Maple	190-440mm DBH	GOOD	To be removed	1452 Hunt Club Road	
RT	*	Rhus typhina	Staghorn Sumac	110-150mm DBH	GOOD	See plan	1470 Hunt Club Road	
RO	1	Elaeagnus angustifolia	Russian Olive	150mm DBH	GOOD	To be removed	1450 Hunt Club Road	
SR	1	Syringa reticulata	Japanese Tree Lilac	110mm DBH	POOR	To remain	City of Ottawa	
UA	1	Ulmus americana	American Elm	250mm DBH	GOOD	To remain	124 Issam Private	
TO	1	Thuja occidentalis	Eastern White Cedar	150mm DBH	FAIR	To be removed	1531 Hunt Club Road	
WC	8	Thuja occidentalis	Eastern White Cedar	300-350mm DBH	POOR-FAIR	To be removed	1450 Hunt Club Road	
WP	1	Pinus strobus	White Pine	310mm DBH	DEAD	To be removed	1531 Hunt Club Road	

CLIENT: **CREVA GROUP**

CONSULTANTS ARCHITECTS: **DTAH Architects Limited**

50 Park Road
Toronto, Ontario
M4W 2N5

T 416 968 7908
F 416 968 0657
www.dtah.com

CIVIL ENGINEERS: **ARCADIS**

SURVEYORS: **ANNIS, O'SULLIVAN, VOLLEBEKK LTD.**

LEGEND

- PROPOSED DECIDUOUS TREE
- 20, 25, or 30m3 SOIL VOLUME (SEE GENERAL NOTES)
- PROPOSED CONIFEROUS TREE
- 25m3 SOIL VOLUME
- PROPOSED SHRUBS
- PROPOSED CEDAR HEDGE
- PROPOSED SOD
- PROPOSED UNIT PAVING
- PROPOSED CONCRETE PAVING
- PROPOSED RIVERSTONE
- EXISTING TREE TO REMAIN
- GROUP OF EXISTING TREES TO REMAIN
- EXISTING TREE TO BE REMOVED
- EXISTING HEDGE TO BE REMOVED
- TREE PROTECTION FENCE
- EXISTING VEGETATION TO REMAIN
- PROPOSED GAZEBO

9	UPDATED PER PRE-CONSULTATION COMMENTS	07/04/2024	ML	JL
7	UPDATED PER NEW SITE PLAN	06/25/2024	ML	JL
6	ISSUED FOR DISCUSSION AND REVIEW	05/31/2024	CM	JL
5	ISSUED FOR COORDINATION	11/20/2023	LC	JL
4	ISSUED FOR COORDINATION	08/22/2023	CM	JL
3	ISSUED FOR DISCUSSION AND REVIEW	08/03/2023	CM	JL
2	ISSUED FOR DISCUSSION AND REVIEW	07/10/2023	CM	JL
1	ISSUED FOR DISCUSSION AND REVIEW	07/05/2023	CM	JL

No. Issue Date MFG/OTV DR CK

JAMES B. LENNOX & ASSOCIATES INC.
LANDSCAPE ARCHITECTS
3332 CARLING AVE. OTTAWA, ONTARIO K2H 5A8
Tel: (613) 722-8168 Fax: (866) 343-3942

PROJECT: 1452 Hunt Club Road
Ottawa, ON K1T 1M6

DRAWING: TREE CONSERVATION REPORT & LANDSCAPE PLAN

STAMP: [Professional Engineer Seal]

SCALE: AS SHOWN

START DATE: July 2023

PROJECT NO.: 21DCR2165

PROJECT NORTH

DRAWING NO.: **L.1**

PLOT SIZE ARCH-D



GENERAL NOTES:

- It is the responsibility of the appropriate contractor or official to report any errors, omissions or discrepancies on this plan with actual site conditions to the Landscape Architect before proceeding with construction.
- The contractor is to notify all utility companies and authorities prior to any excavation and ascertain locations of underground services.
- The contractor is to reinstate all areas and items damaged as a result of construction activity.
- The contractor is to comply with all pertinent codes and by-laws.
- The contractor is to maintain a positive surface run-off throughout the entire construction period.
- The Landscape Architect is not responsible for subsurface conditions.
- The contractor is to identify all existing trees to remain on site with the Landscape Architect prior to construction.

CURRENT VEGETATION LIST

V#	KEY	Qty	BOTANICAL NAME	COMMON NAME	SIZE	CONDITION	RECOMMENDED ACTION	OWNERSHIP
1	NO	1	Acer platanoides	Norway Maple	190mm DBH	GOOD	To remain	City of Ottawa
2	SR	1	Syringa reticulata	Japanese Tree Lilac	110mm DBH	POOR	To remain	City of Ottawa
3	RT	*	Rhus typhina	Staghorn Sumac	110-150mm DBH	GOOD	See plan	1470 Hunt Club Road
4	RT	*	Rhus typhina	Staghorn Sumac	110-150mm DBH	GOOD	To remain	1470 Hunt Club Road
5	AP	1	Acer platanoides	Norway Maple	300mm DBH	GOOD	To remain	1470 Hunt Club Road
6	AP	1	Acer platanoides	Norway Maple	300mm DBH	GOOD	To remain	1470 Hunt Club Road
7	AN	1	Acer negundo	Manitoba Maple	200mm DBH	GOOD	To remain	1470 Hunt Club Road
8	AN	1	Acer negundo	Manitoba Maple	200mm DBH	GOOD	To remain	1470 Hunt Club Road
9	RT	*	Rhus typhina	Staghorn Sumac	110-150mm DBH	GOOD	To remain	1470 Hunt Club Road
10	AN	*	Acer negundo	Manitoba Maple	100-200mm DBH	GOOD	To remain	1470 Hunt Club Road
11	UA	1	Ulmus americana	American Elm	250mm DBH	GOOD	To remain	124 Issam Private
12	RT	*	Rhus typhina	Staghorn Sumac	110-150mm DBH	GOOD	To remain	1470 & 1480 Hunt Club Road
13	PD	1	Populus deltoides	Cottonwood Poplar	150mm DBH	GOOD	To be removed	1470 Hunt Club Road
14	RO	1	Eleagnus angustifolia	Russian Olive	150mm DBH	GOOD	To be removed	1450 Hunt Club Road
15	PD	1	Populus deltoides	Cottonwood Poplar	150mm DBH	GOOD	To be removed	1470 Hunt Club Road
16	PN	1	Pinus nigra	Austrian Pine	150mm DBH	GOOD	To be removed	1470 Hunt Club Road
17	WP	1	Pinus strobus	White Pine	310mm DBH	DEAD	To be removed	1531 Hunt Club Road
18	WC	8	Thuja occidentalis	Eastern White Cedar	300-350mm DBH	POOR-FAIR	To be removed	1450 Hunt Club Road
19	PL	1	Acer platanoides	Norway Maple	250mm DBH	GOOD	To be removed	1480 Hunt Club Road
20	EC	*	Thuja occidentalis	Eastern White Cedar	150-250mm DBH	DEAD	To be removed	1452 & 1460 Hunt Club Road
21	PT	1	Acer platanoides	Norway Maple	440mm DBH	GOOD	To be removed	1452 Hunt Club Road
22	PT	1	Acer platanoides	Norway Maple	190mm DBH	GOOD	To be removed	1452 Hunt Club Road
23	PL	1	Acer platanoides	Norway Maple	400mm DBH	GOOD	To be removed	1460 Hunt Club Road
24	TO	*	Thuja occidentalis	Eastern White Cedar	150mm DBH	FAIR	To be removed	1452 & 1531 Hunt Club Road
25	MA	*	Fraxinus spp.	Ash	100mm DBH	GOOD	To be removed	1450 Hunt Club Road

CLIENT:
CREVA GROUP

CONSULTANTS:
ARCHITECTS:
DTAH Architects Limited 50 Park Road
Toronto, Ontario
M4W 2N5
dtah T 416 968 7908
F 416 968 0657
www.dtah.com

CIVIL ENGINEERS:
ARCADIS

SURVEYORS:
ANNIS, O'SULLIVAN, VOLLEBEKK LTD.
14 Carleton Place, Suite 300
Mississauga, Ont. L4W 1M8
Phone: (905) 277-0480 / Fax: (905) 277-0519
Email: info@anniso.com
Ontario
Land Surveyors
Reg. No. 20726, License No. 24364, 2016, T. F. 081

LEGEND

EXISTING TREE

EXISTING HEDGE OR GROUP OF VEGETATION

8	UPDATED PER PRE-CONSULTATION COMMENTS	07/04/2024	CM	JL
7	UPDATED PER NEW SITE PLAN	06/25/2024	ML	JL
6	ISSUED FOR DISCUSSION AND REVIEW	05/31/2024	CM	JL
5	ISSUED FOR COORDINATION	11/20/2023	LC	JL
4	ISSUED FOR COORDINATION	08/22/2023	CM	JL
3	ISSUED FOR DISCUSSION AND REVIEW	08/03/2023	CM	JL
2	ISSUED FOR DISCUSSION AND REVIEW	07/10/2023	CM	JL
1	ISSUED FOR DISCUSSION AND REVIEW	07/05/2023	CM	JL
No.	Issue	Date	DR	CK
		MM/DD/YY		

JAMES B. LENNOX & ASSOCIATES INC.
LANDSCAPE ARCHITECTS
3332 CARLING AVE. OTTAWA, ONTARIO K2J 5A5
Tel. (613) 722-5168 Fax. (1866) 343-3942

PROJECT
1452 Hunt Club Road
Ottawa, ON K1T 1M6

DRAWING
TREE CONSERVATION REPORT -
CURRENT VEGETATION

STAMP

SCALE
AS SHOWN

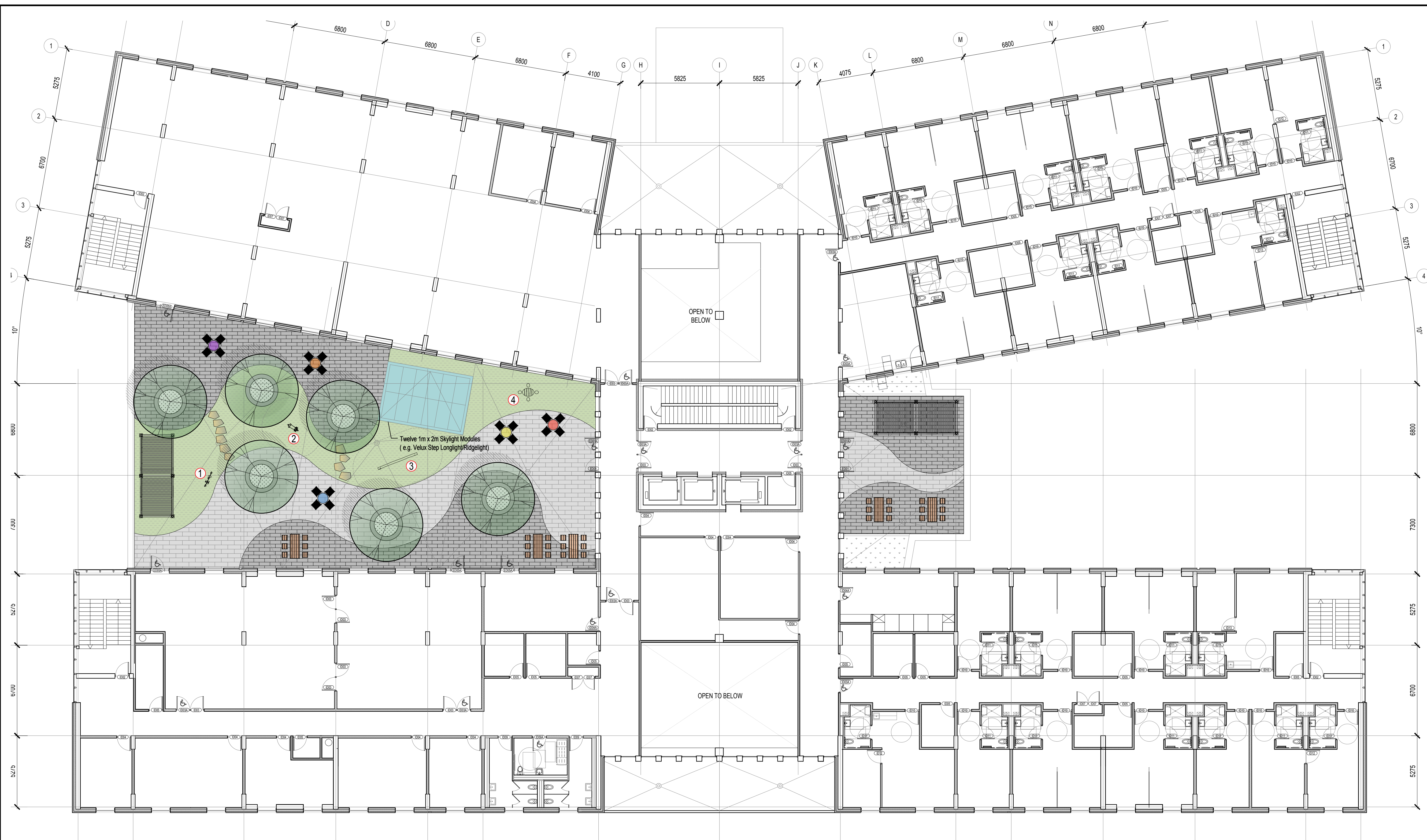
START DATE
July 2023

PROJECT NO.
21DCR2165

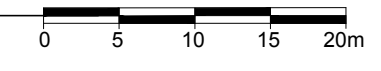
PROJECT NORTH

DRAWING NO.
TCR1

PLOT SIZE ARCH-D



1 ROOF TERRACE PLAN
L.2 SCALE 1:150



Play Panel 1 - Creative ①
PCM00021

Item no. PCM00021-0901
General Product Information
Dimensions LxWxH 121x28x75 cm
Age group 6m - 8
Play capacity (users) 4
Colour options

1 1/19/2023

Crazy Scrambler ②
M130

Item no. M130T01P
General Product Information
Dimensions LxWxH 36x50x33 cm
Age group 2 - 6
Play capacity (users) 2
Colour options

1 1/19/2023

Single balance beam ③
NR0202

Item no. NR0202-0601
General Product Information
Dimensions LxWxH 310x15x38 cm
Age group 5 - 12
Play capacity (users) 2
Colour options

1 1/19/2023

Kids Table with 4 Sitting Poles ④
NR0202

Item no. NR0202-0501
General Product Information
Dimensions LxWxH 145x125x50 cm
Age group 6m - 8
Play capacity (users) 4
Colour options

1 1/19/2023

CLIENT:
CREVA GROUP

CONSULTANTS:
ARCHITECTS:
DTAH Architects Limited 50 Park Road
Toronto, Ontario
M4W 2N5
T 416 968 7908
F 416 968 0687
www.dtah.com

CIVIL ENGINEERS:
ARCADIS

SURVEYORS:
ANNIS, O'SULLIVAN, VOLLEBEKK LTD.
14 Concourse Gate, Suite 800
Wexham, Ont. M2E 7P9
Phone: (416) 727-6800 / Fax: (416) 727-1079
www.anniso.com
Lic. No. 30229-01, Licensee's P.L.M.S. Reg. T.F.

LEGEND

- PROPOSED DECIDUOUS TREE
- PROPOSED 4 SEAT PATIO TABLE
- PROPOSED PICNIC TABLE
- PROPOSED PERGOLA
- PROPOSED PRECAST STEPPING STONES
- PROPOSED PRECAST PAVING TYPE 1
- PROPOSED PRECAST PAVING TYPE 2
- PROPOSED ARTIFICIAL TURF

8	UPDATED PER PRE-CONSULTATION COMMENTS	07/04/2024	CM	JL
7	UPDATED PER NEW SITE PLAN	06/25/2024	ML	JL
6	ISSUED FOR DISCUSSION AND REVIEW	05/31/2024	CM	JL
5	ISSUED FOR COORDINATION	11/20/2023	LC	JL
4	ISSUED FOR COORDINATION	08/22/2023	CM	JL
3	ISSUED FOR DISCUSSION AND REVIEW	08/03/2023	CM	JL
2	ISSUED FOR DISCUSSION AND REVIEW	07/10/2023	CM	JL
1	ISSUED FOR DISCUSSION AND REVIEW	07/05/2023	CM	JL
No.	Issue	Date	DR	CK

JAMES B. LENNOX & ASSOCIATES INC.
LANDSCAPE ARCHITECTS
3332 CARLING AVE. OTTAWA, ONTARIO K2H 5A8
Tel. (613) 722-5168 Fax. (866) 343-3942

PROJECT
1452 Hunt Club Road
Ottawa, ON K1T 1M6

DRAWING
ROOF TERRACE PLAN

STAMP

SCALE
AS SHOWN

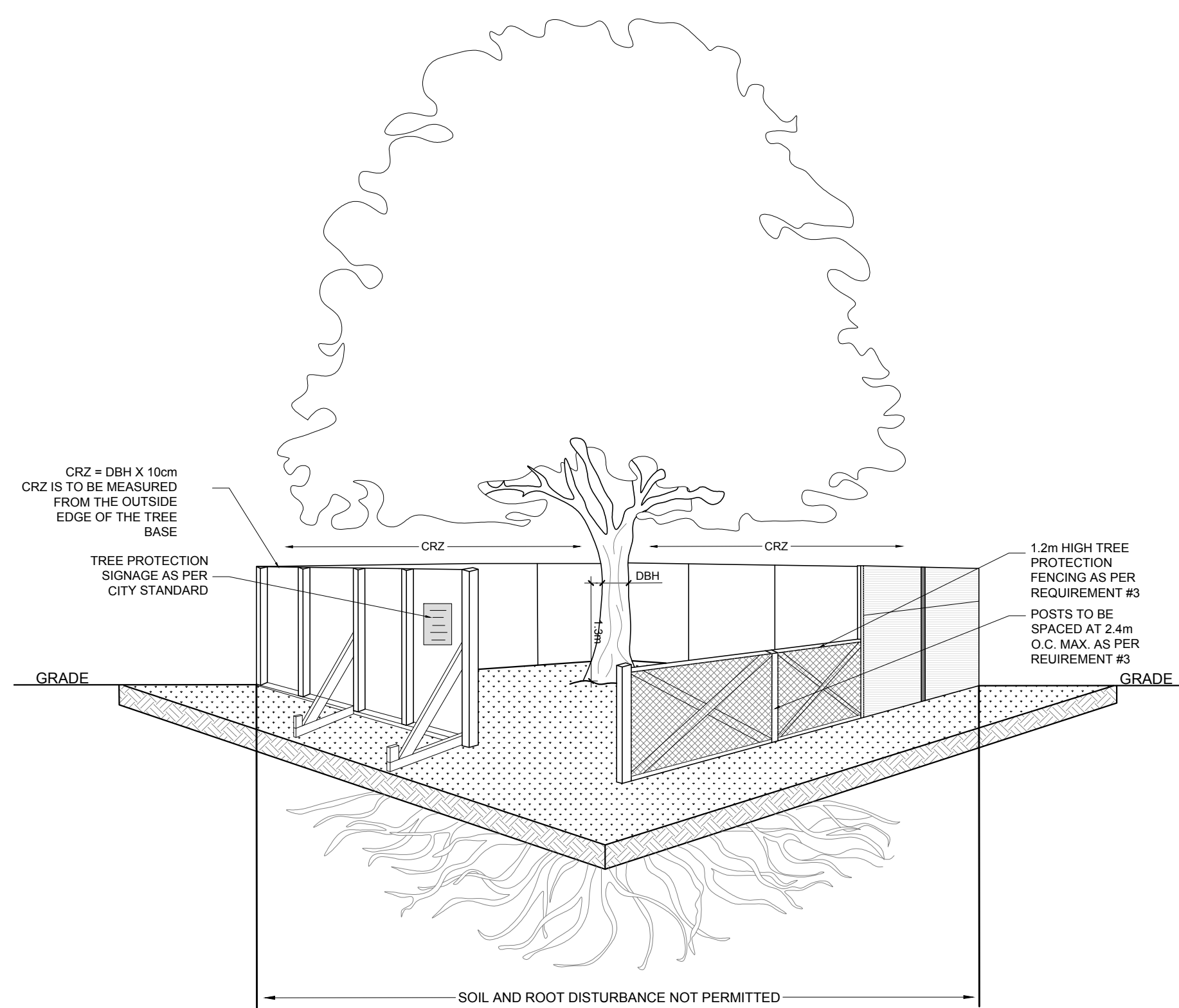
START DATE
July 2023

PROJECT NO.
21DCR2165

PROJECT NORTH

DRAWING NO.
L.2

PLOT SIZE ARCH-D



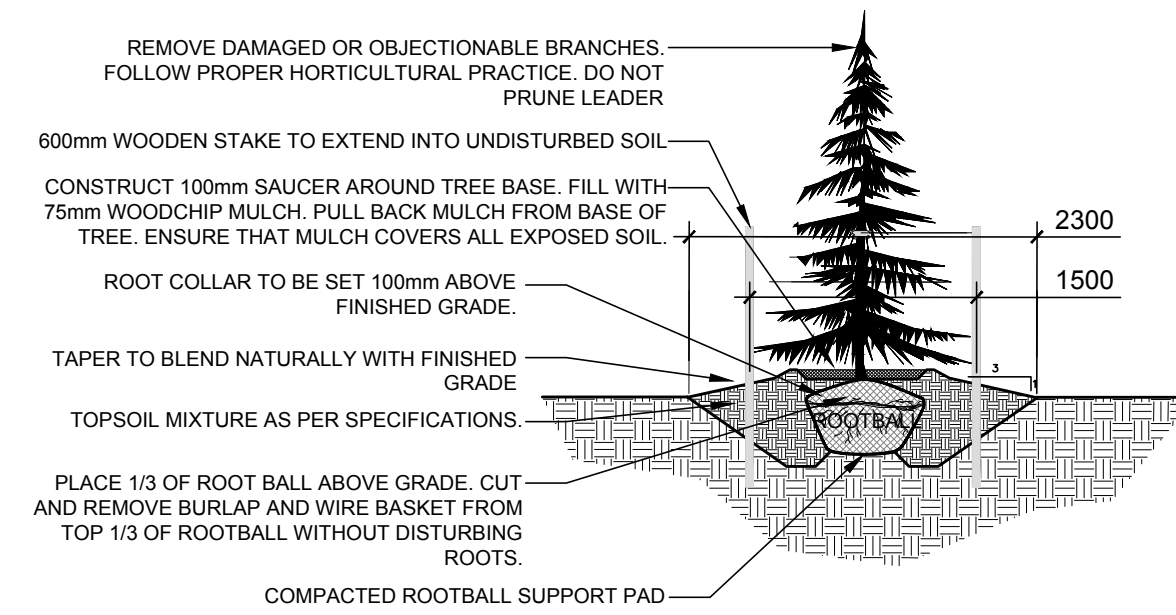
1 TREE PROTECTION FENCE
SCALE: NTS

TREE PROTECTION REQUIREMENTS:

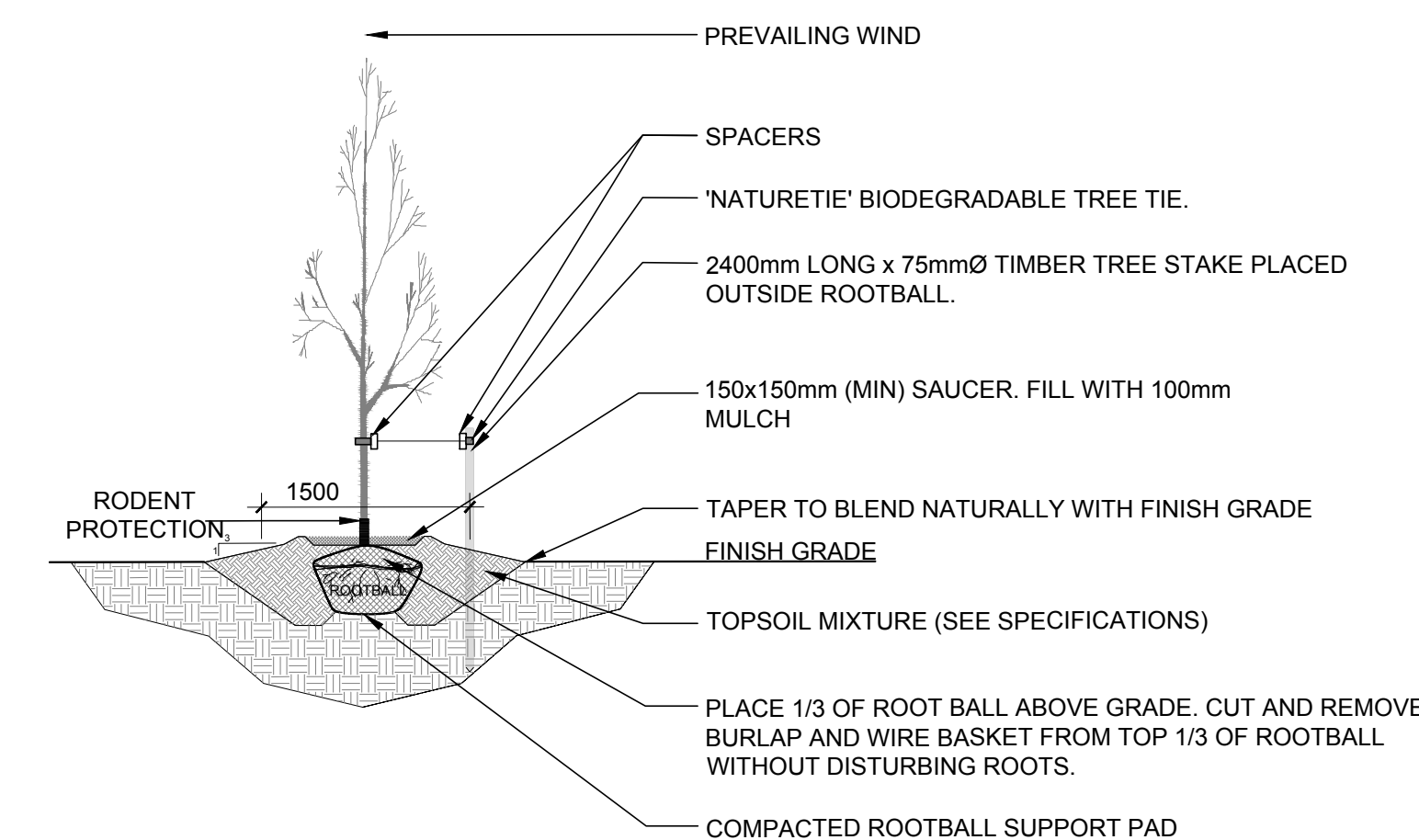
- PRIOR TO ANY WORK ACTIVITY WITHIN THE CRITICAL ROOT ZONE (CRZ = 10X DIAMETER) OF A TREE, TREE PROTECTION FENCING MUST BE INSTALLED SURROUNDING THE CRITICAL ROOT ZONE AND REMAIN IN PLACE UNTIL THE WORK IS COMPLETE.
 - DO NOT PLACE ANY MATERIAL OR EQUIPMENT INCLUDING OUTHOUSES.
 - DO NOT ATTACH ANY SIGNS, NOTICES OR POSTERS TO ANY TREE;
 - DO NOT RAISE OR LOWER THE EXISTING GRADE; TUNNEL OR BORE WHEN DIGGING;
 - DO NOT DAMAGE THE ROOT SYSTEM, TRUNK, OR BUNCHES OR ANY TREE;
 - ENSURE THAT EXHAUST FUMES FROM ALL EQUIPMENT ARE NOT DIRECTED TOWARD ANY TREE CANOPY.
 - DO NOT EXTEND HARD SURFACE OR SIGNIFICANTLY CHANGE LANDSCAPING
- TREE PROTECTION FENCING MUST BE AT LEAST 1.2m IN HEIGHT, AND BE CONSTRUCTED OF RIGID OR FRAMED MATERIALS (E.G. MODULOC™ STEEL, PLYWOOD HOARDING, OR SNOW FENCE ON A 2"x4" WOOD FRAME) WITH POSTS 2.4m APART, SUCH THAT THE FENCE LOCATION CANNOT BE ALTERED. ALL SUPPORTS AND BRACING MUST BE PLACED OUTSIDE OF THE CRZ, AND INSTALLATION MUST MINIMISE DAMAGE TO EXISTING ROOTS. (SEE DETAIL)
- THE LOCATION OF THE TREE PROTECTION FENCING MUST BE DETERMINED BY AN ARBORIST AND DETAILED ON ANY ASSOCIATED PLANS FOR THE SITE (E.G. TREE CONSERVATION REPORT, TREE DISCLOSURE REPORT, ETC). THE PLAN AND CONSTRUCTED FENCING MUST BE APPROVED BY CITY FORESTRY STAFF PRIOR TO THE COMMENCEMENT OF WORK.
- IF THE FENCED TREE PROTECTION AREA MUST BE REDUCED TO FACILITATE CONSTRUCTION, MITIGATION MEASURES MUST BE PRESCRIBED BY AN ARBORIST AND APPROVED BY CITY FORESTRY STAFF. THESE MAY INCLUDE THE PLACEMENT OF PLYWOOD, WOOD CHIPS OR STEEL PLATING OVER THE ROOTS FOR PROTECTION OR THE PROPER PRUNING AND CARE OF ROOTS WHERE ENCOUNTERED.

BY-LAWS:

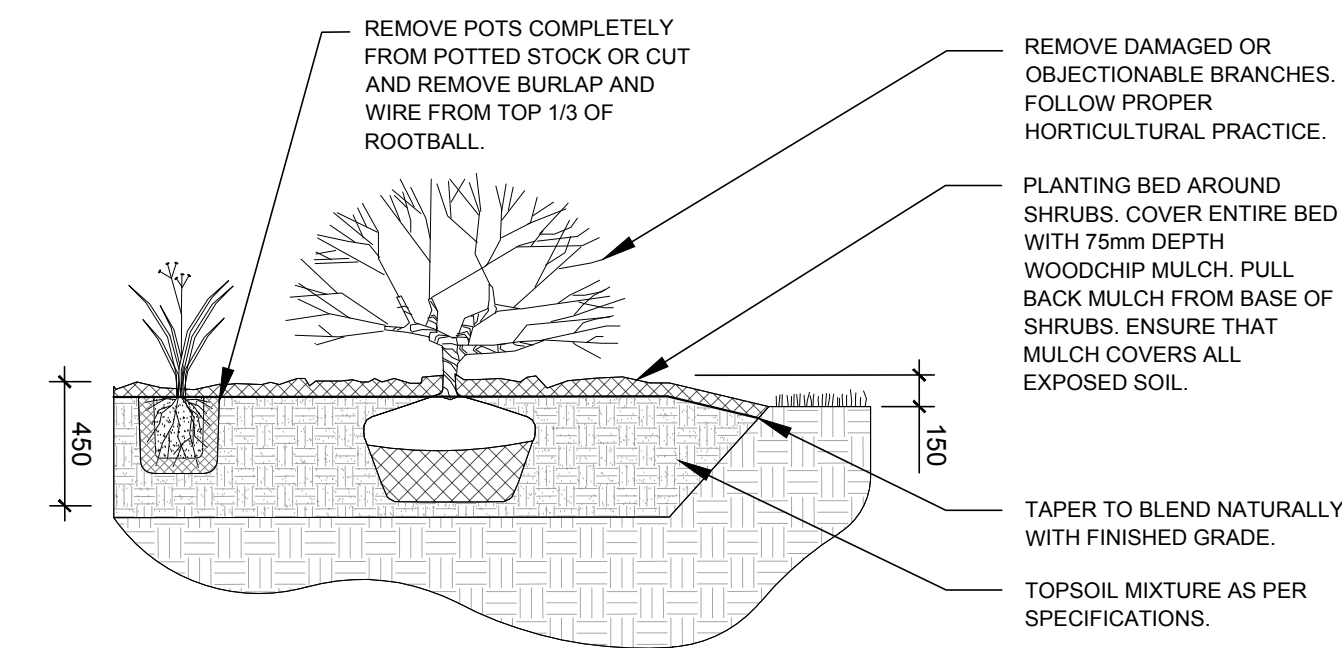
ALL CITY-OWNED TREES ARE PROTECTED UNDER THE MUNICIPAL TREES AND NATURAL AREAS PROTECTION BY-LAW (2006-279). WITHIN THE URBAN AREA, PRIVATELY-OWNED TREES GREATER THAN 50cm IN DIAMETER ON LOTS 1 HECTARE IN SIZE OR LESS, AND TREES GREATER THAN 10cm IN DIAMETER ON LOTS GREATER THAN 1 HECTARE, ARE PROTECTED UNDER THE URBAN TREE CONSERVATION BY-LAW (2009-200).



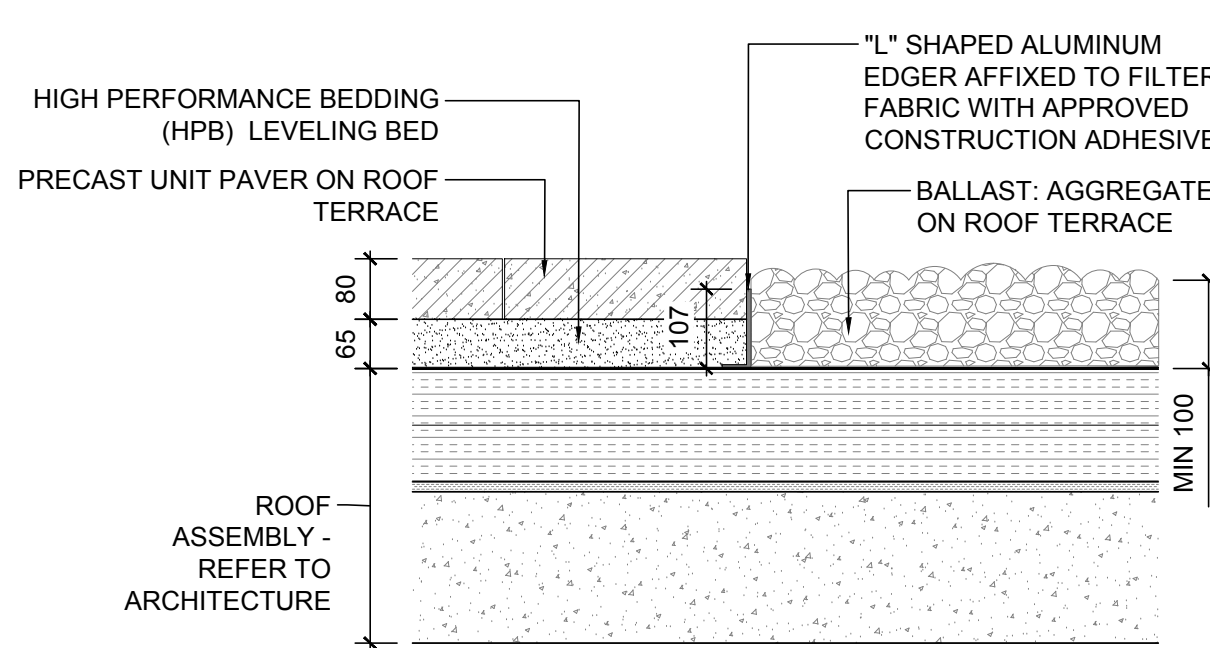
2 CONIFEROUS TREE PLANTING
SCALE: NTS



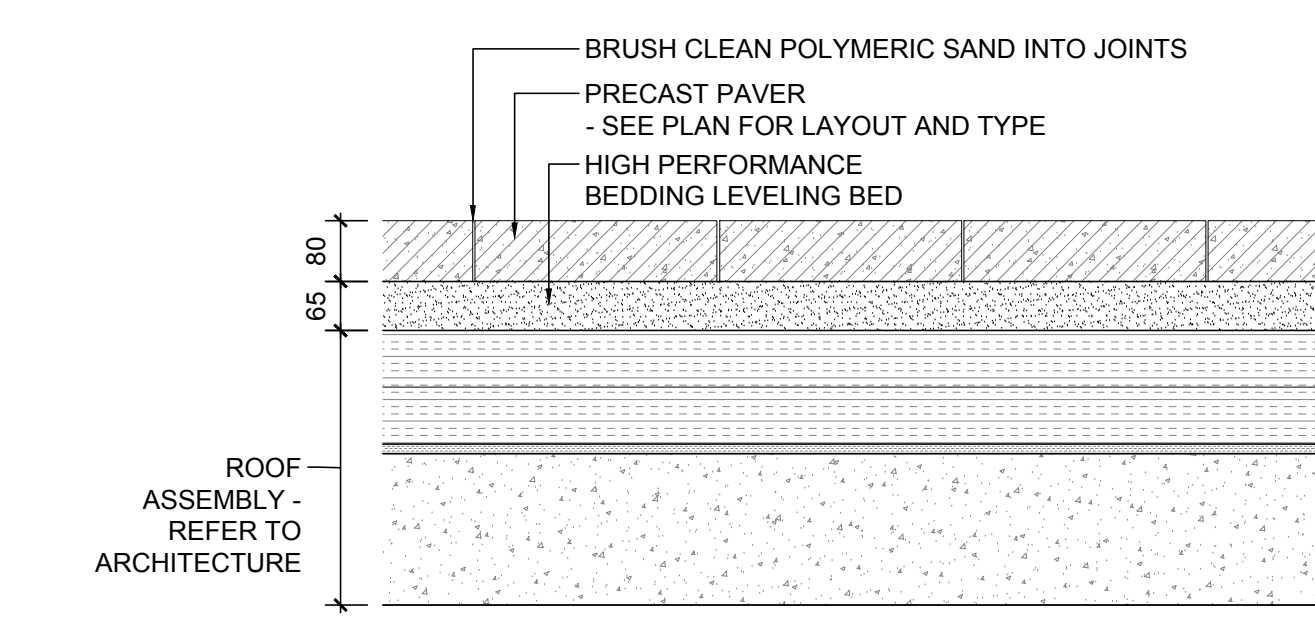
3 DECIDUOUS TREE PLANTING
SCALE: NTS



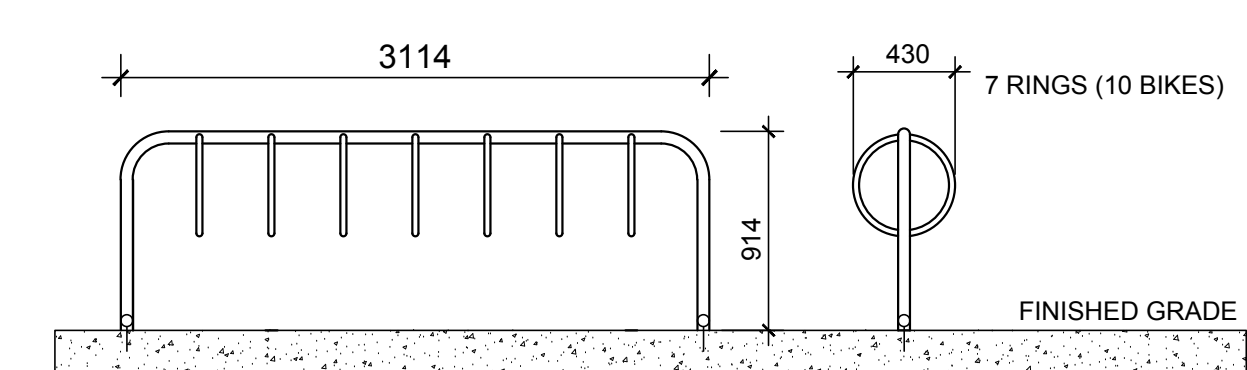
4 SHRUB PLANTING
SCALE: NTS



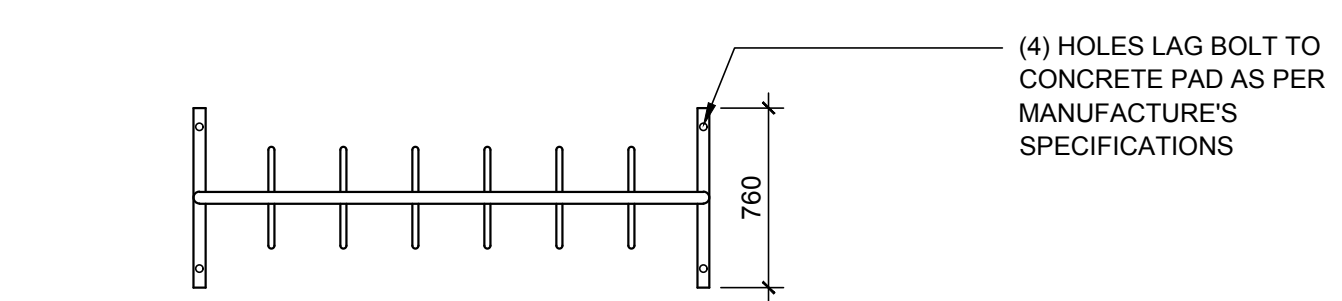
5 AGGREGATE @ PAVERS ON ROOF TERRACE
SCALE: NTS



6 PRECAST UNIT PAVER - ROOF TERRACE
SCALE: NTS



7 Mazeweld 7 Ring Bike Rack
SCALE: NTS



CLIENT:
CREVA GROUP

CONSULTANTS
ARCHITECTS:
DTAH Architects Limited 50 Park Road
Toronto, Ontario
M4W 2N5
T 416 968 7908
F 416 968 0687
www.dtah.com

CIVIL ENGINEERS:
ARCADIS

SURVEYORS:
ANNIS, O'SULLIVAN, VOLLEBEKK LTD.
14 Concourse Gate, Suite 800
Wesley, ON M9E 7S9
Phone: (416) 727-6800 / Fax: (416) 727-1079
www.aosvl.com
Lic. No. 20229-01, Licensee: D.L.M.S. 8164, T.F.

- GENERAL NOTES:**
- It is the responsibility of the appropriate contractor or official to report any errors, omissions or discrepancies on this plan with actual site conditions to the Landscape Architect before proceeding with construction.
 - The contractor is to notify all utility companies and authorities prior to any excavation and ascertain locations of underground services.
 - The contractor is to reinstaate all areas and items damaged as a result of construction activity.
 - The contractor is to comply with all pertinent codes and by-laws.
 - The contractor is to maintain a positive surface run-off throughout the entire construction period.
 - The Landscape Architect is not responsible for subsurface conditions.
 - The contractor is to identify all existing trees to remain on site with the Landscape Architect prior to construction.
 - The contractor is to stake the proposed location of all plant material in conjunction with the Landscape Architect prior to excavation.
 - Minimum distances for selected trees are as follows:
 - Building Foundations 7.5m
 - Sidewalks 1.5m
 - Public Streets 2.5m
 - Underground Infrastructure 2.0m
 - Watermain 2.0m
 - All trees within 1m of underground utility trenches are to be excavated by hand.
 - Remove all protective wrapping from tree trunks after installation.
 - Staking of trees shall only be performed if necessary.
 - Ensure that mulch is pulled back a min. distance of 75mm from base of tree trunk.
 - Tree removal is not to take place between April 15th and August 15th during bird nesting season.
 - Tree soil volumes are to be as follows:
 - 20m³ for large deciduous trees
 - 25m³ for evergreen and medium deciduous trees
 - 20m³ for small deciduous trees

No.	Issue	Date	DR	CK
8	UPDATED PER PRE-CONSULTATION COMMENTS	07/04/2024	CM	JL
7	UPDATED PER NEW SITE PLAN	06/25/2024	ML	JL
6	ISSUED FOR DISCUSSION AND REVIEW	05/31/2024	CM	JL
5	ISSUED FOR COORDINATION	11/20/2023	LC	JL
4	ISSUED FOR COORDINATION	08/22/2023	CM	JL
3	ISSUED FOR DISCUSSION AND REVIEW	08/03/2023	CM	JL
2	ISSUED FOR DISCUSSION AND REVIEW	07/10/2023	CM	JL
1	ISSUED FOR DISCUSSION AND REVIEW	07/05/2023	CM	JL

JAMES B. LENNOX & ASSOCIATES INC.
LANDSCAPE ARCHITECTS
3333 CARLING AVE. OTTAWA, ONTARIO K2H 5A8
Tel. (416) 722-5168 Fax. (416) 343-3942

PROJECT
1452 Hunt Club Road
Ottawa, ON K1T 1M6

DRAWING
DETAILS

STAMP

SCALE
AS SHOWN

START DATE
July 2023

PROJECT NO.
21DCR2165

PROJECT NORTH

DRAWING NO.
L.3

PLOT SIZE ARCH-D