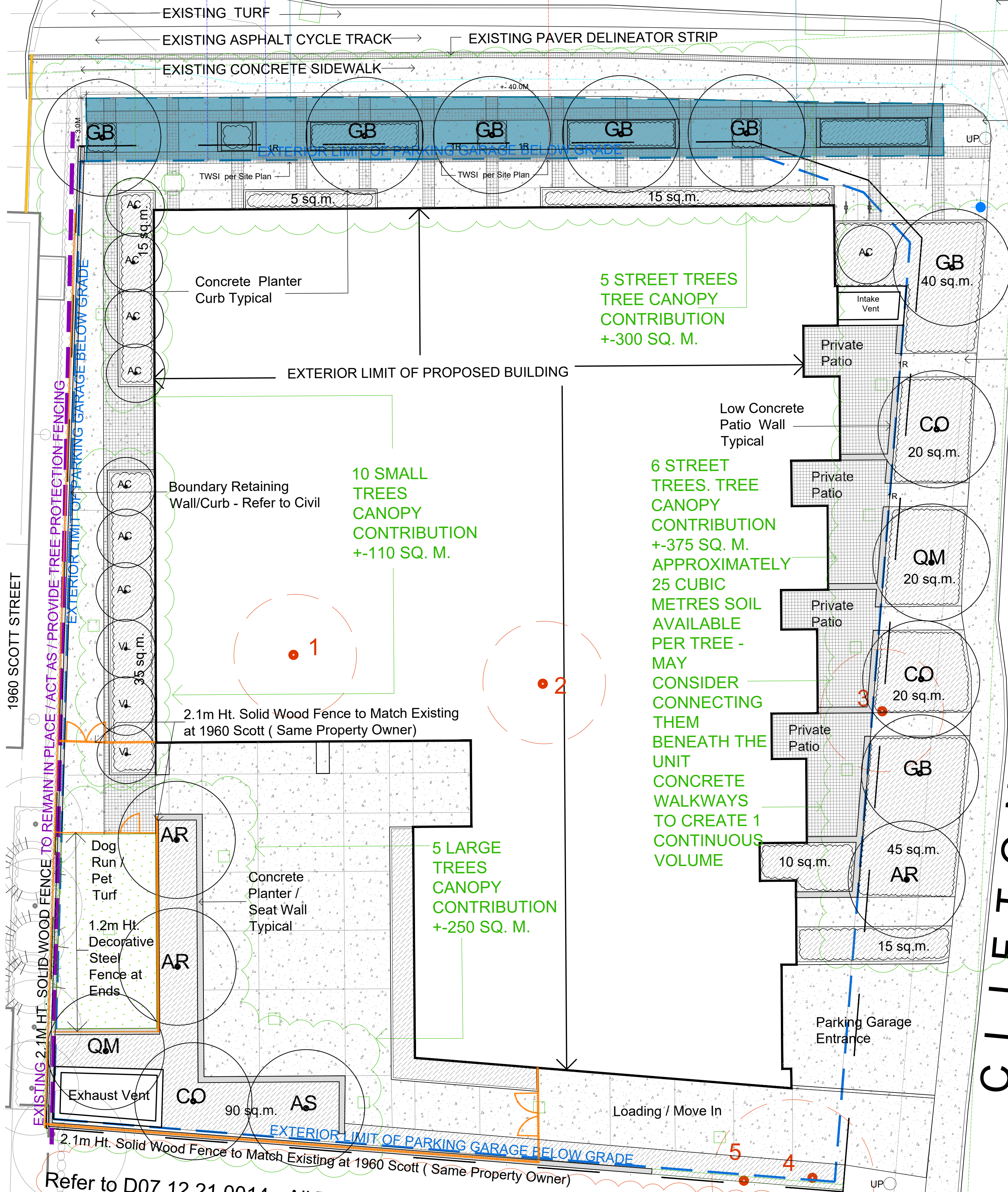
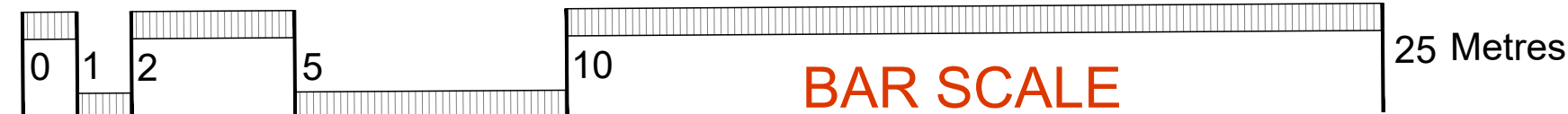


SCOTT STREET

+125 sq. m. Below Grade Rooting Volume x 0.8m Depth = 100 Cubic Metres for 5 Trees. 20 Cubic Metres per Tree



Refer to D07 12 21 0014 - All Trees (#16-28)to be Removed as per Approved TCR

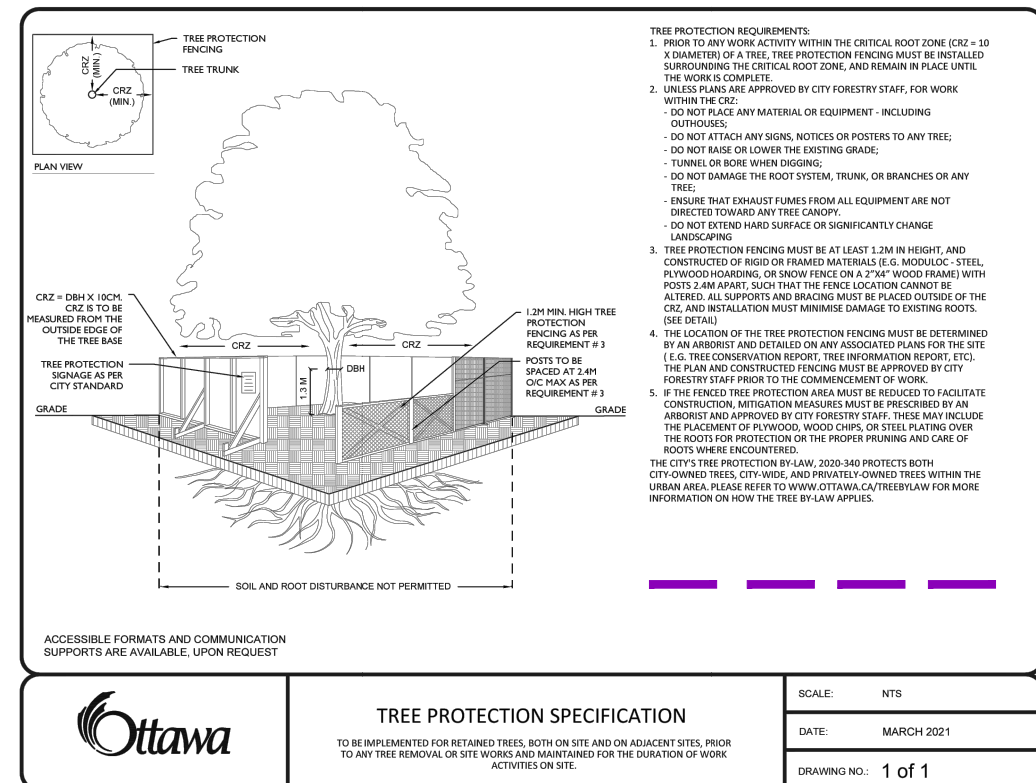
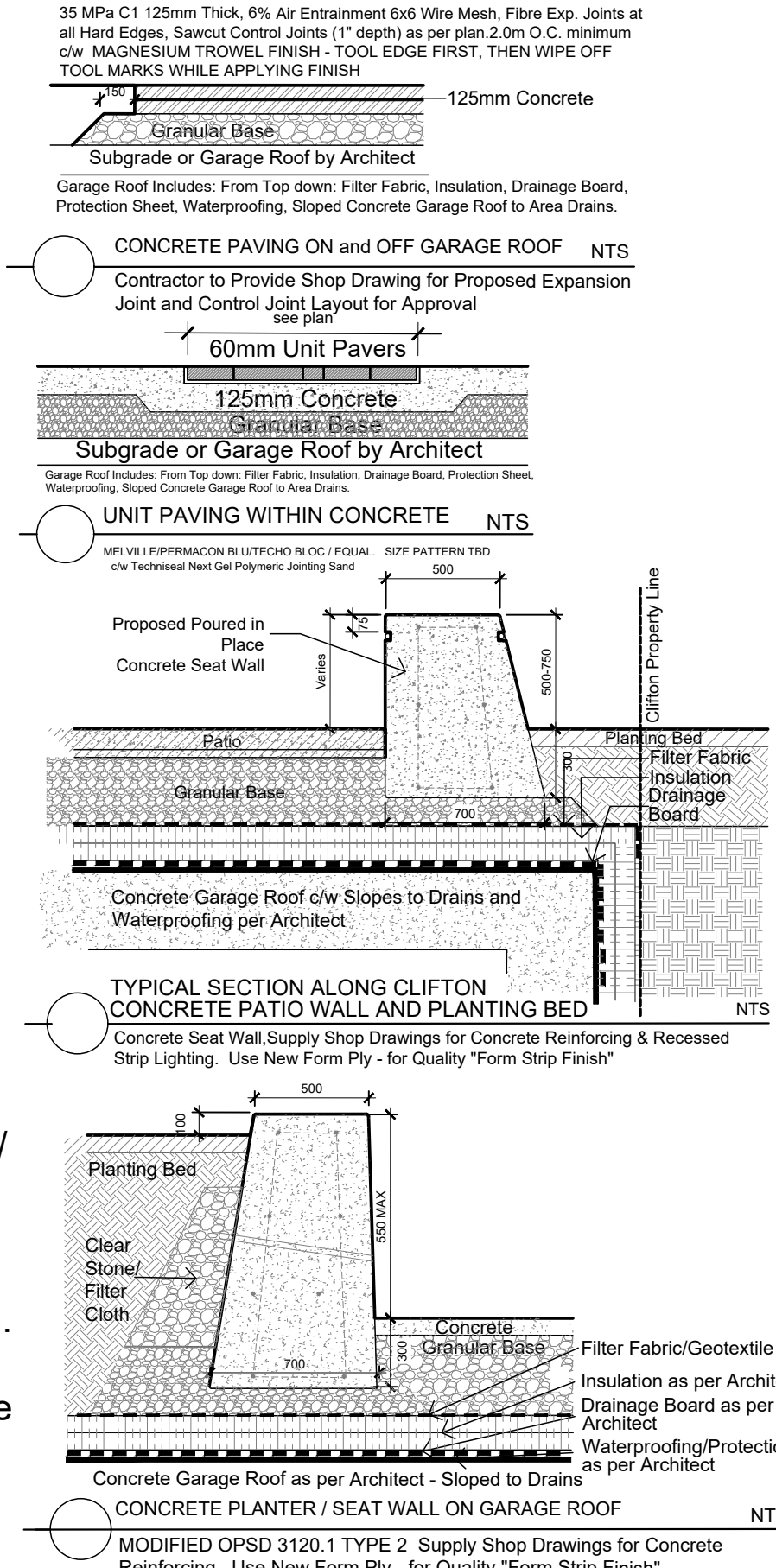


Utility Pole / Overhead Wires Crossing Scott Street To Remain

Utility Poles / Overhead Wires to be Removed along Clifton. New Hydro Service to be buried - Location TBD

CLIFTON ROAD

EXISTING TREE PLAN DETAIL
LEGAL DESCRIPTION
PART 1 - PLAN OF SURVEY
LOTS 24 AND 25
AND PART OF LOTS 45, 46,
47 AND 48
REGISTERED PLAN 369
CITY OF OTTAWA



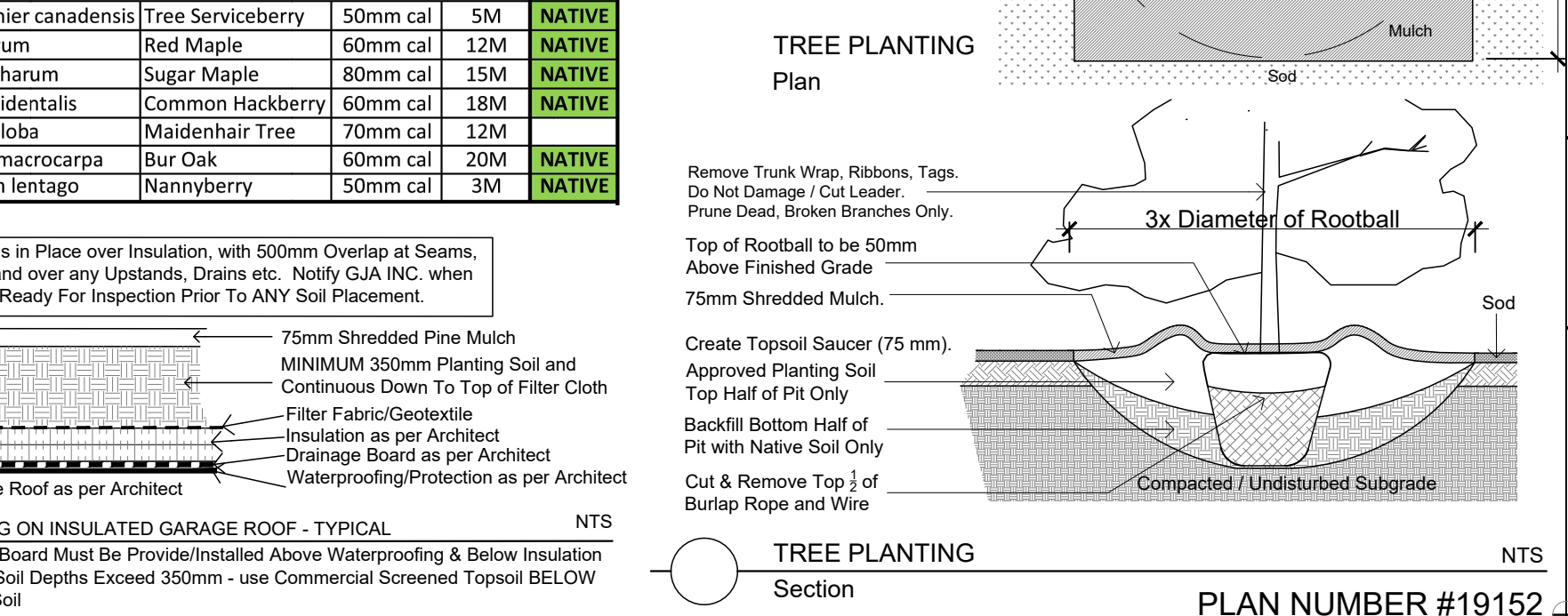
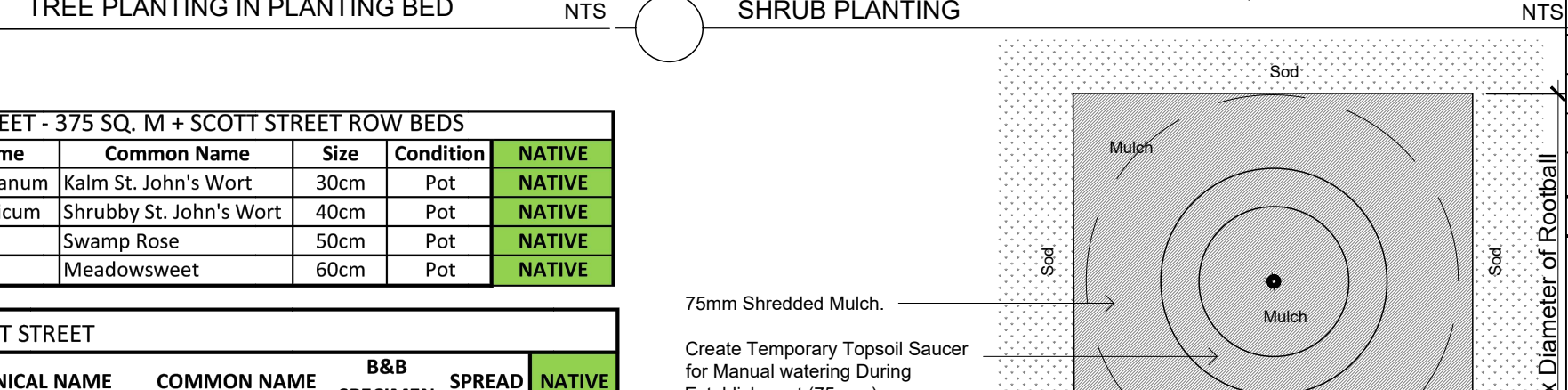
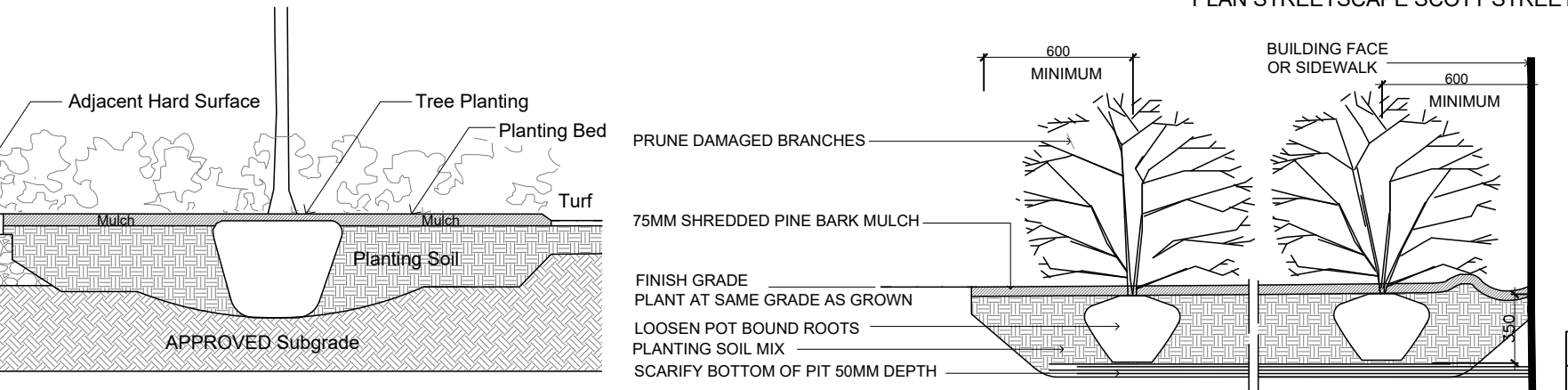
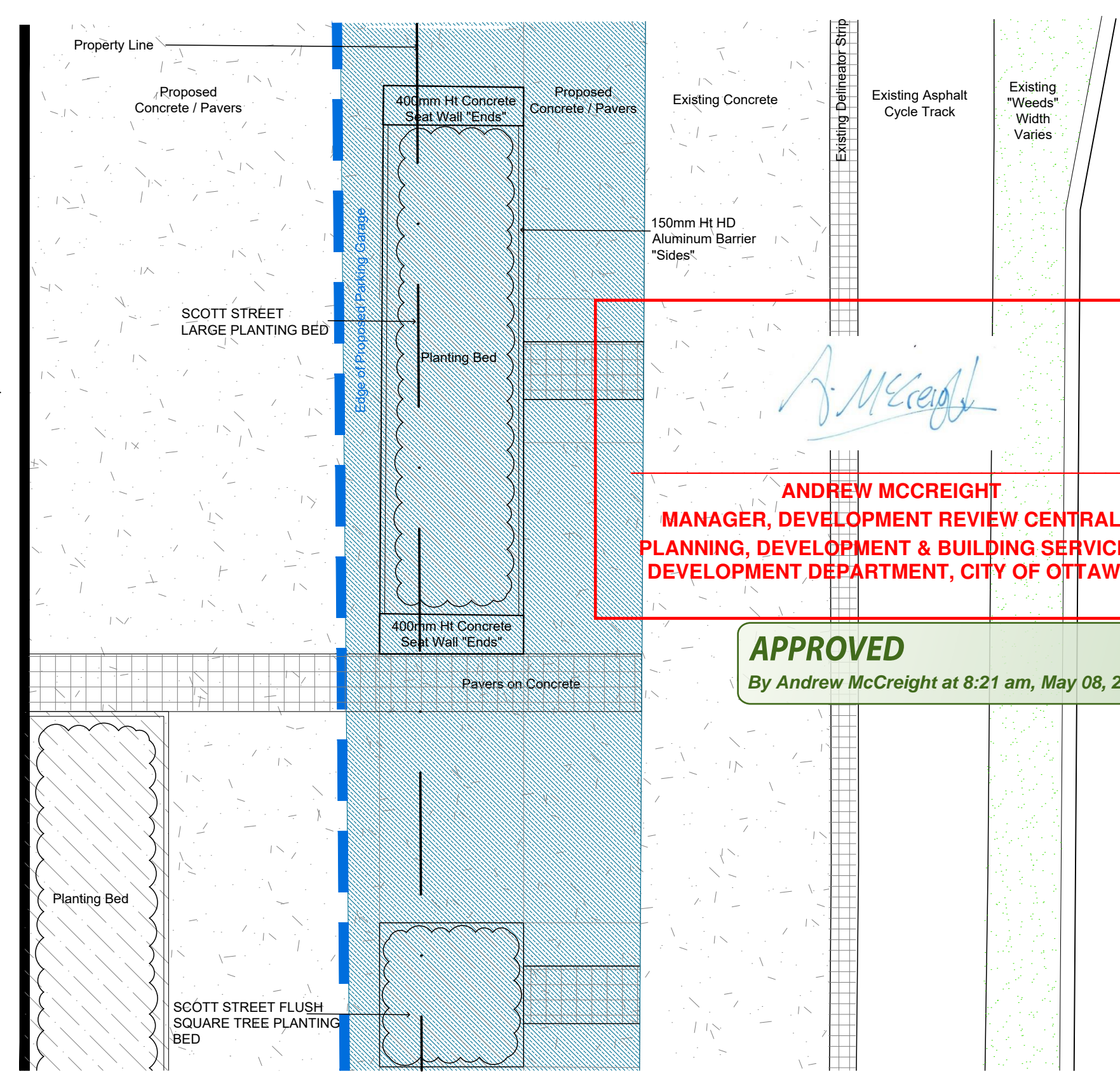
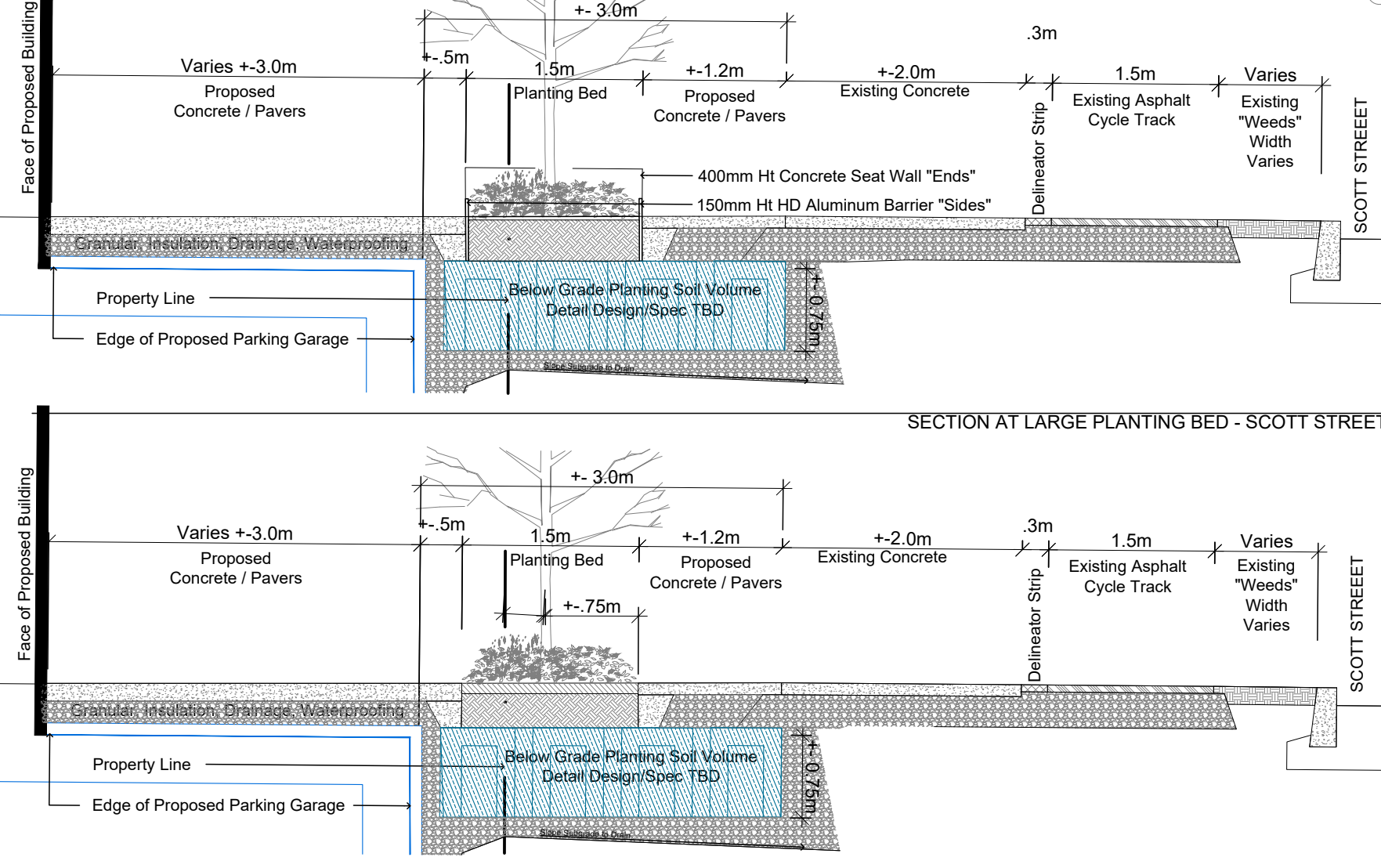
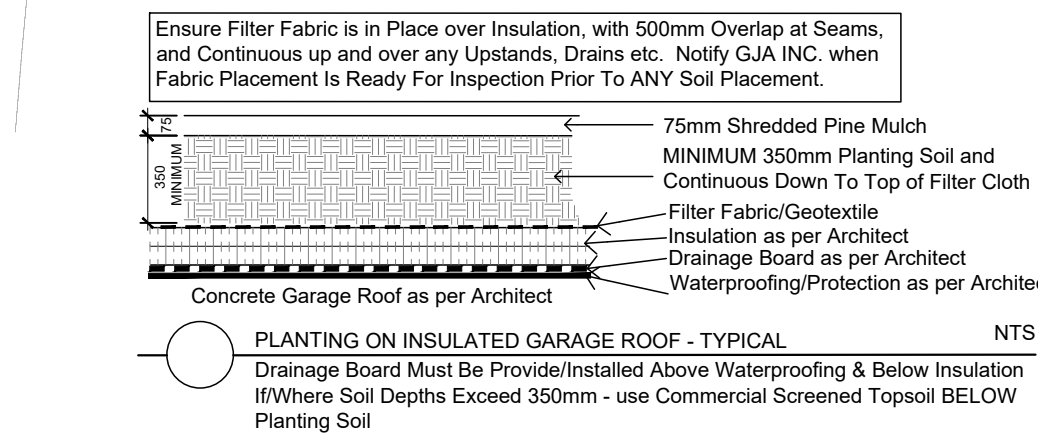
NO.	VARIETY	COMMON NAME	DESCRIPTION	OWNERSHIP	CONDITION	REMARKS	OTHER REMARKS
1	Thuja occidentalis	White Cedar	Multiple Clumps 0-15cm	Private	Good	REMOVE	
2	Juniperus virginiana	Eastern Red Cedar	Multiple 0-15cm	Private	EXCELLENT	REMOVE	
3	Acer negundo	Manitoba Maple	2 Trees - 120cm and 50cm	Private	POOR	REMOVE	
4	Acer saccharum	Sugar Maple	5 Trees @ 30cm each	Private	Good	REMOVE	
5	Acer saccharum	Sugar Maple	60cm Heavy Hydro Pruned	Private	POOR	REMOVE	
6	Refer to TCR D07 12 21 0014	Refer to TCR D07 12 21 0014	2 Trees - 90cm and 30cm	Private	Refer to TCR D07 12 21 0014	Listed for Removal # 28	
7	Refer to TCR D07 12 21 0014	Refer to TCR D07 12 21 0014	Refer to TCR D07 12 21 0014	Neighbours	D07 12 21 0014	Listed for Removal # 16-25	

EXISTING TREE TABLE



SHRUBS 1950 SCOTT STREET - 375 SQ. M + SCOTT STREET ROW BEDS						
Code	Qty.	Botanical Name	Common Name	Size	Condition	NATIVE
HK	225	Hypericum kalmianum	Kalm St. John's Wort	30cm	Pot	NATIVE
HP	175	Hypericum prolificum	Shrubby St. John's Wort	40cm	Pot	NATIVE
RP	75	Rosa palustris	Swamp Rose	50cm	Pot	NATIVE
SA	150	Spiraea alba	Meadowsweet	60cm	Pot	NATIVE

TREE SCHEDULE 1950 SCOTT STREET							
CODE	QUANTITY		BOTANICAL NAME	COMMON NAME	B&B SPECIMEN	SPREAD	NATIVE
	SITE	CITY					
AC	5	0	Amelanchier canadensis	Tree Serviceberry	50mm cal	5M	NATIVE
AR	2	1	Acer rubrum	Red Maple	60mm cal	12M	NATIVE
AS	1	0	Acer saccharum	Sugar Maple	80mm cal	15M	NATIVE
CO	1	2	Celtis occidentalis	Common Hackberry	60mm cal	18M	NATIVE
GB	0	7	Ginkgo biloba	Maidenhair Tree	70mm cal	12M	
QM	1	1	Quercus macrocarpa	Bur Oak	60mm cal	20M	NATIVE
VL	3	0	Viburnum lentago	Nannyberry	50mm cal	3M	NATIVE



Drawing Remains the Property of Copyright Reserved by GJA INC. Do Not Use or Reproduce Without Approval of Gino J. Aiello.
| PLANTING MIX TO BE APPROVED BY LANDSCAPE ARCHITECT | PLANT MATERIAL TO MEET CNLA STANDARDS/BE APPROVED BY LANDSCAPE ARCHITECT PRIOR TO PLANTING ALL MATERIALS & WORK TO BE MAINTAINED UNTIL FINAL ACCEPTANCE. INCLUDE 1 YEAR WARRANTY FROM DATE OF FINAL ACCEPTANCE | REFER TO CIVIL ENGINEER'S DRAWING FOR ELEVATIONS / GRADING |
The Landscape Plan is to be read in conjunction with the grading, servicing, site and survey plan. All trees to be preserved on or directly adjacent to the site will be protected | Plant material are to be installed a minimum of 3.0m away from any part of any hydro transformer, 3.0m corridor between a fire hydrant and the curb, a 2.5m radius beside or behind a fire hydrant, 2.0m from any servicing/utility line or structure |



- LEGEND
- LANDSCAPE REMOVALS
- Existing Tree to Remove
- LANDSCAPE PROPOSED
- Deciduous Tree
 - Scott Street Small Planting Bed
 - Scott Street Large Planting Bed
 - Typical Planting Bed
 - Concrete
 - Precast Pavers
 - Concrete Seat Wall
- SITE / ARCHITECTURE
- Parking Garage Below
 - Fire Hydrant
 - FD Siamese Connection
 - Light Standard
 - Hydro/Utility Pole
- BELOW GRADE SERVICES REFER TO CIVIL/CUP
- WTR - U/G Water Service
 - STM - U/G Storm Service
 - SAN - U/G Sanitary Service
 - GAS - U/G Gas Service
 - BC - U/G TelCO Service
 - H - U/G Hydro Service
 - OHV - O/H Hydro Service

ANDREW MCCREIGHT
MANAGER, DEVELOPMENT REVIEW CENTRAL
PLANNING, DEVELOPMENT & BUILDING SERVICES
DEVELOPMENT DEPARTMENT, CITY OF OTTAWA

APPROVED
By Andrew McCreight at 8:21 am, May 08, 2025

6 ISSUED FOR SPC 2025 04 17
5 per City Comments 2025 01 08
4 per City Comments 2024 12 13
3 per City Comments 2024 11 01
2 ZBLA 2024 09 24
1 SPC SUBMISSION 1 2024 07 31
0 REVIEW/COORDINATION 2024 06 00
Revision Date

Granite Private Equity
Limited Partnership
16 Concourse Gate, Suite 200 Ottawa, ON K2E 7S8

GJA INC.
GINO J. AIELLO | LANDSCAPE ARCHITECT
GJAL.COM | 613 286 5130 | GINO@GJAL.COM
110 DUNDAS STREET WEST, 11TH FLOOR, OTTAWA, ON K1H 1C2

MULTI UNIT
RESIDENTIAL
DEVELOPMENT
1950 SCOTT STREET

Landscape
Plan / TCR

L1
Scale: 1:125