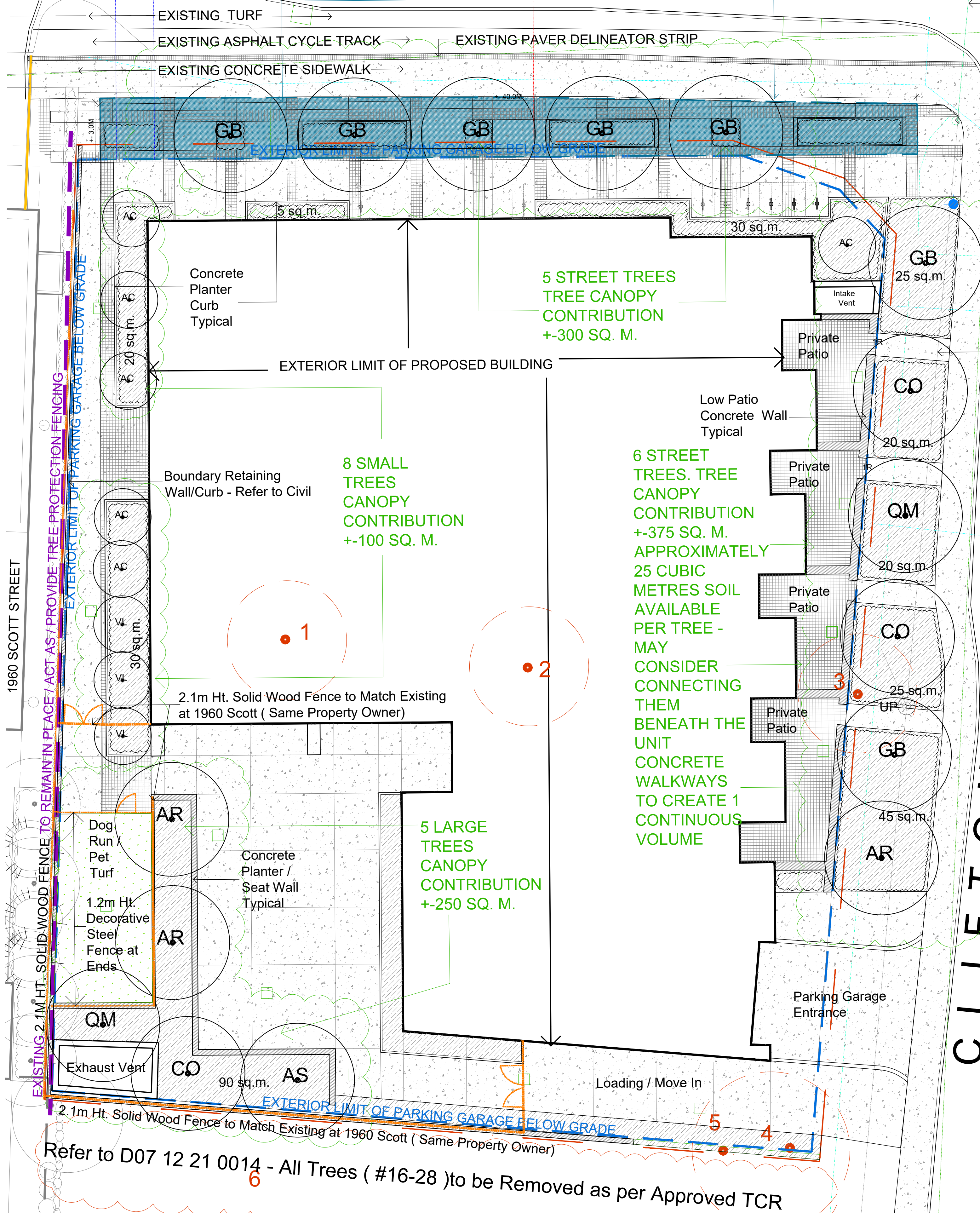


SCOTT STREET

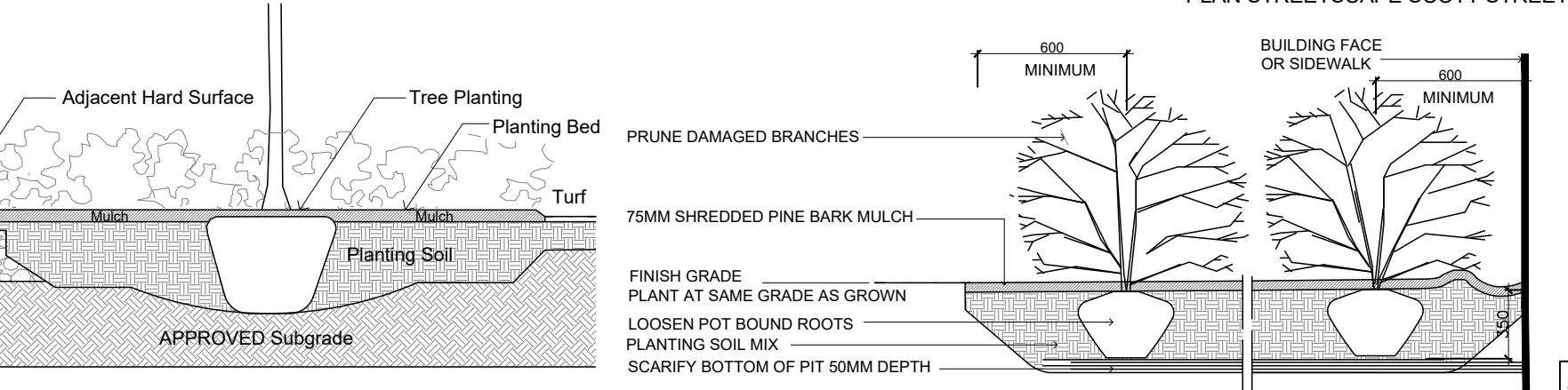
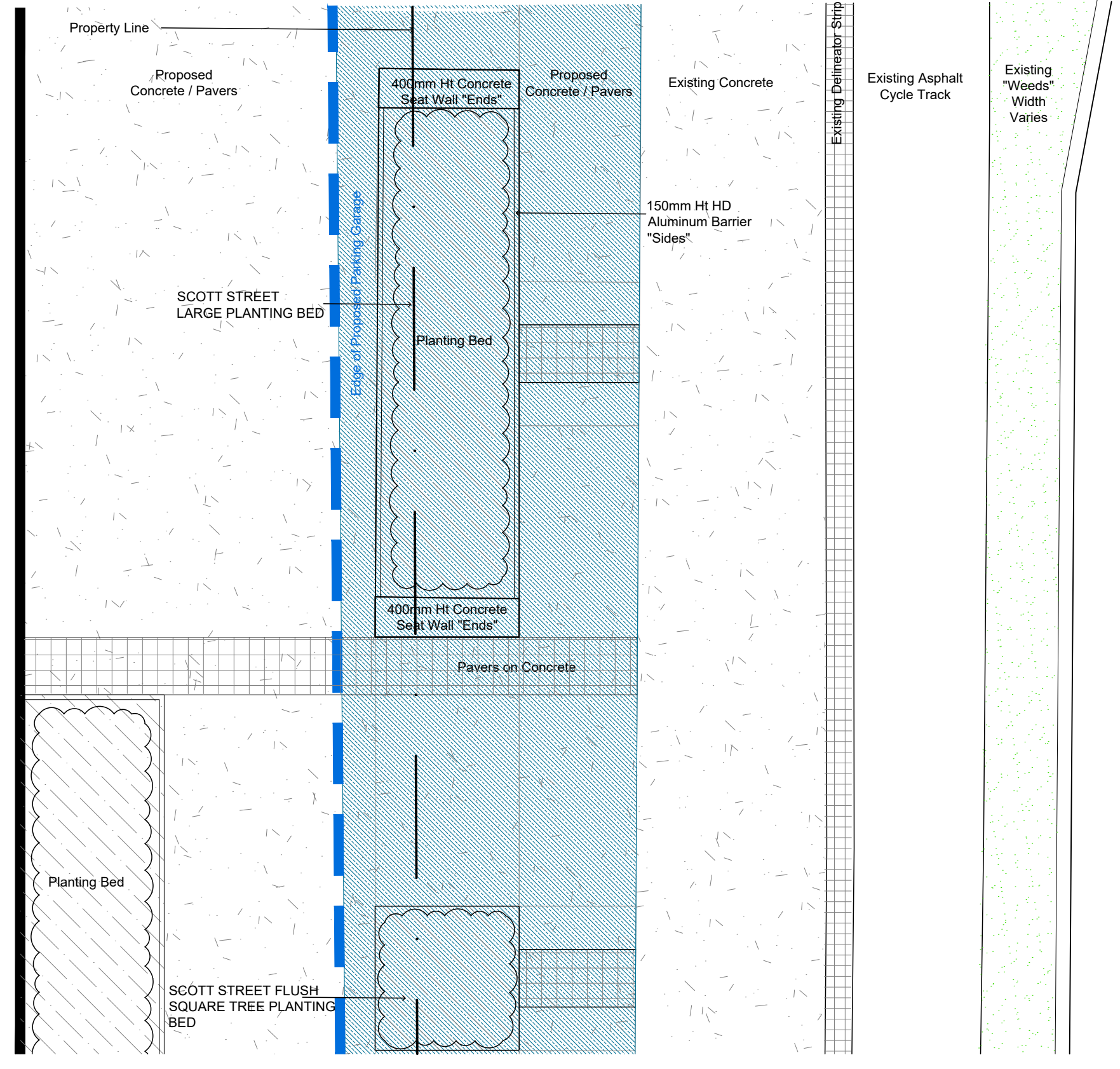
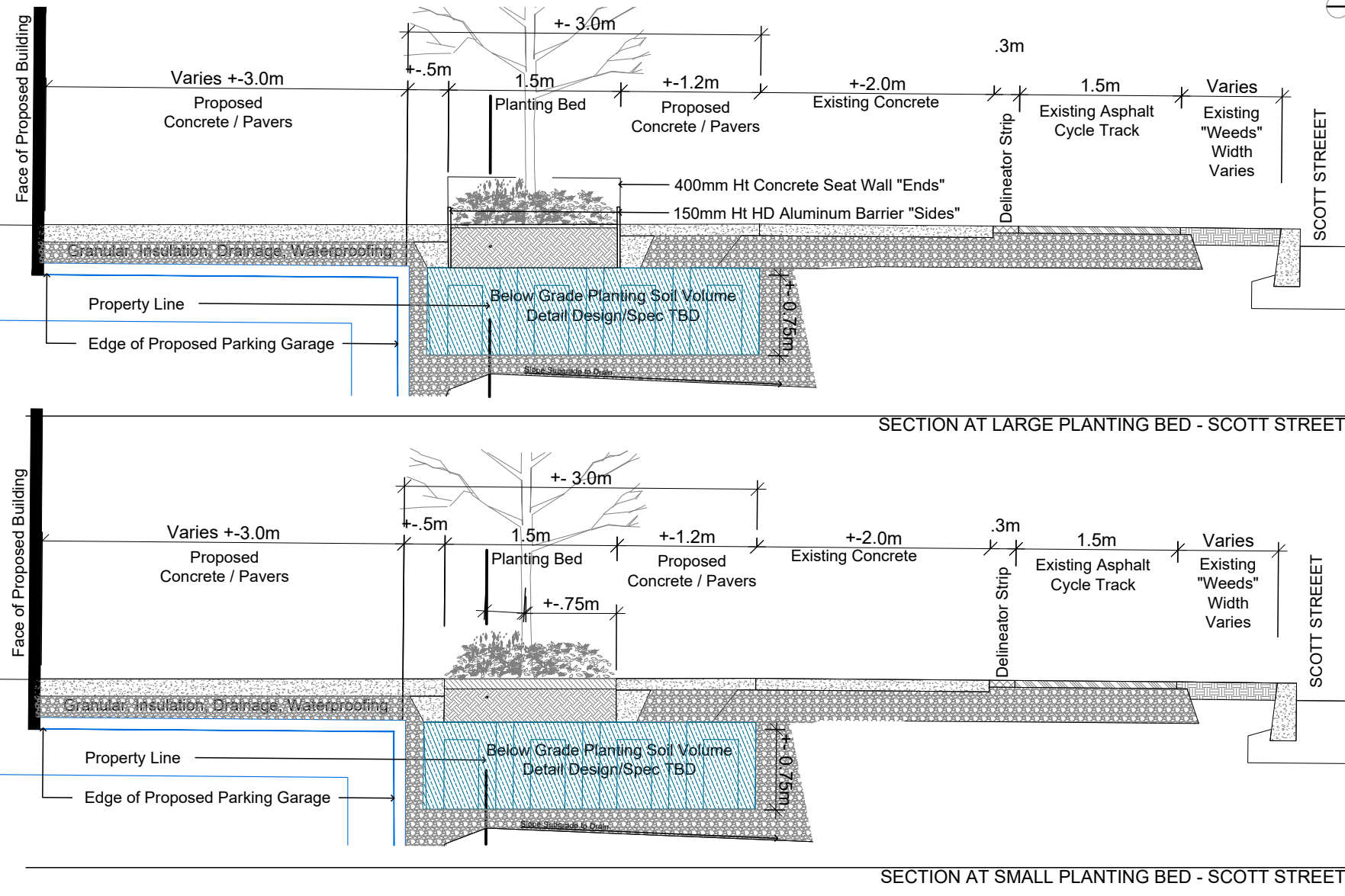
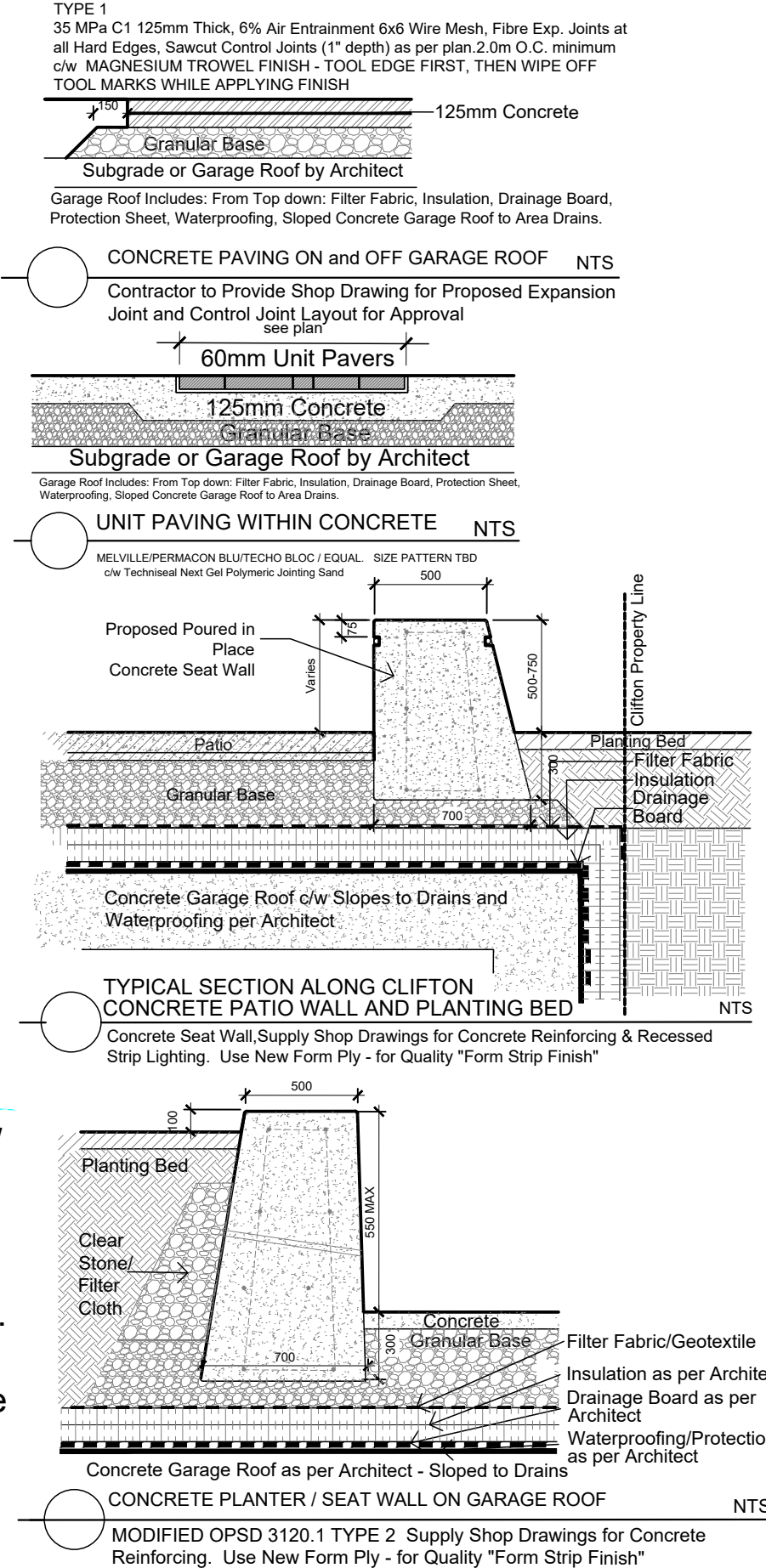
+125 sq. m. Below Grade Rooting Volume x 0.8m Depth = 100 Cubic Metres for 5 Trees. 20 Cubic Metres per Tree



Utility Pole / Overhead Wires Crossing Scott Street To Remain

Utility Poles / Overhead Wires to be Removed along Clifton. New Hydro Service to be buried - Location TBD

CLIFTON ROAD



TREE PROTECTION SPECIFICATION

OTAWA

DATE: MARCH 2021

SCALE: NTS

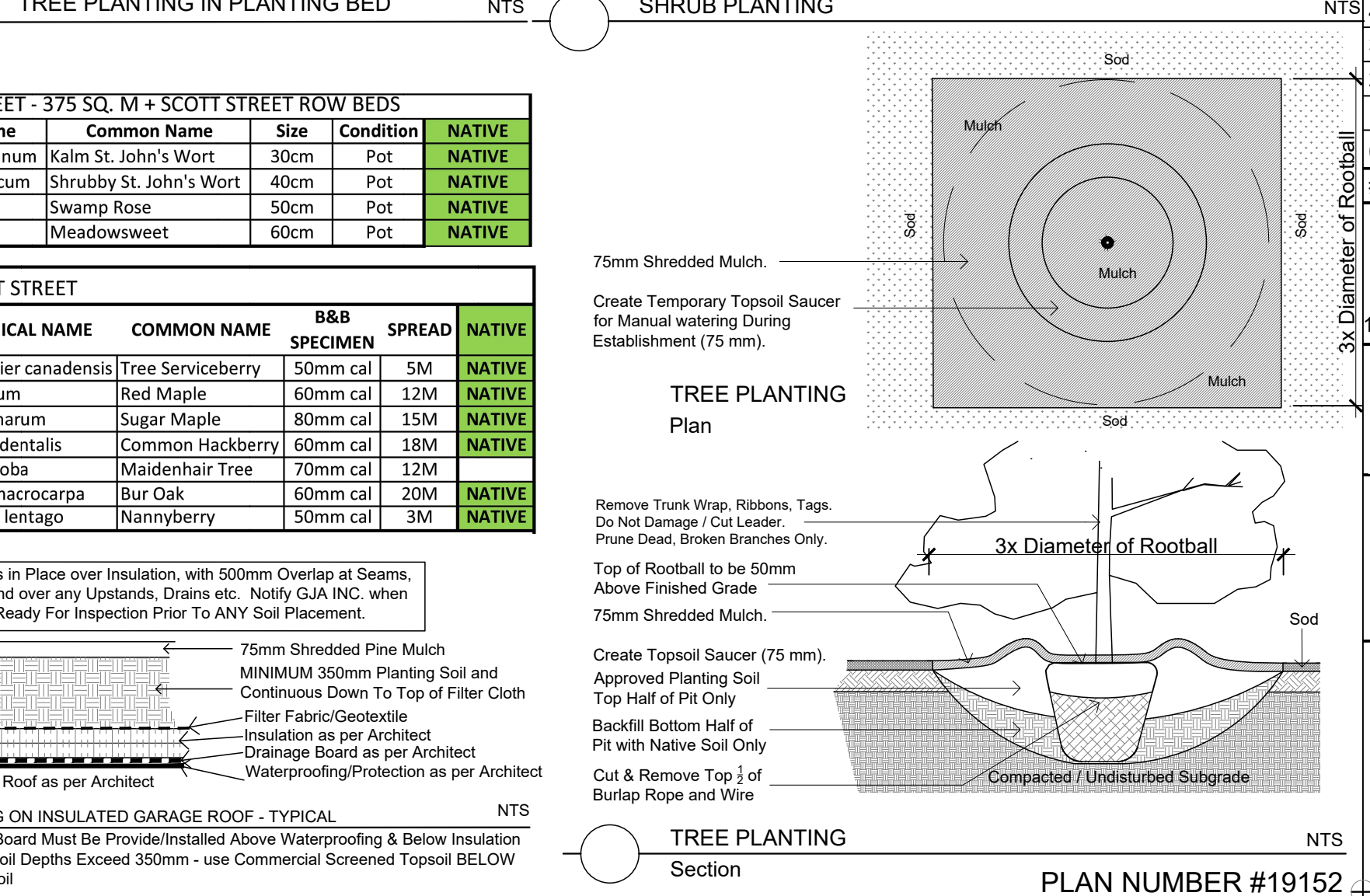
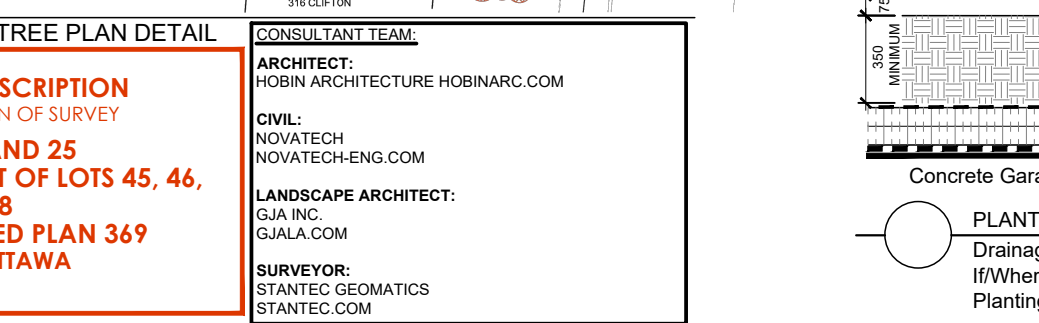
DRAWING NO: 1 of 1

ID	VARIETY	COMMON NAME	DESCRIPTION	OWNER	CONDITION	REMARKS	OTHER REMARKS
1	Thuja occidentalis	White Cedar	Multiple Clumps 0-15cm	Private	Good	REMOVE	
2	Juniperus virginiana	Eastern Red Cedar	Multiple 0-15cm	Private	EXCELLENT	REMOVE	
3	Acer negundo	Manitoba Maple	2 Trees - 120cm and 50cm	Private	POOR	REMOVE	
4	Acer saccharum	Sugar Maple	5 Trees @ 30cm each	Private	Good	REMOVE	
5	Acer saccharum	Sugar Maple	60cm Heavily Hydro Pruned	Private	POOR	REMOVE	
6	Refer to TCR D07 12 21 0014	Refer to TCR D07 12 21 0014	2 Trees - 90cm and 30cm	Private	Refer to TCR for Removal # 28 / D07 12 21 0014		
7	Refer to TCR D07 12 21 0014	Refer to TCR D07 12 21 0014	Refer to TCR for Removal # 19-25 / D07 12 21 0014	Neighbours	Refer to TCR for Removal # 19-25 / D07 12 21 0014		

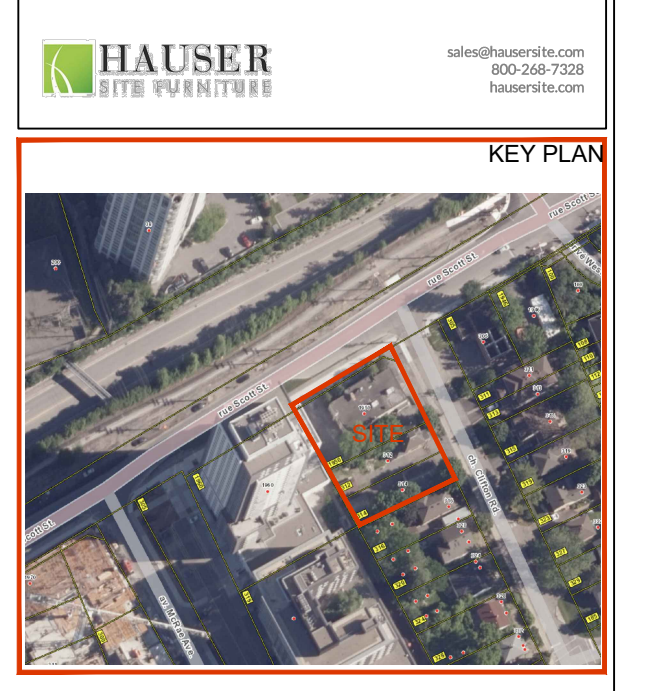
EXISTING TREE TABLE

SCOTT STREET

CODE	QTY.	BOTANICAL NAME	COMMON NAME	SIZE	CONDITION	NATIVE
HK	225	Hypericum kalmianum	Kalm St. John's Wort	30cm	Pot	NATIVE
HP	175	Hypericum prolificum	Shrubby St. John's Wort	40cm	Pot	NATIVE
RP	75	Rosa palustris	Swamp Rose	50cm	Pot	NATIVE
SA	150	Spiraea alba	Meadowsweet	60cm	Pot	NATIVE



Drawing Remains the Property of Copyright Reserved by GJA INC. Do Not Use or Reproduce Without Approval of Gino J. Aiello. | PLANTING MIX TO BE APPROVED BY LANDSCAPE ARCHITECT | PLANT MATERIAL TO MEET CNLA STANDARDS/BE APPROVED BY LANDSCAPE ARCHITECT PRIOR TO PLANTING ALL MATERIALS & WORK TO BE MAINTAINED UNTIL FINAL ACCEPTANCE. INCLUDE 1 YEAR WARRANTY FROM DATE OF FINAL ACCEPTANCE | REFER TO CIVIL ENGINEER'S DRAWING FOR ELEVATIONS / GRADING | The Landscape Plan is to be read in conjunction with the grading, servicing, site and survey plan. All trees to be preserved on or directly adjacent to the site will be protected | Plant material are to be installed a minimum of 3.0m away from any part of any hydro transformer, 3.0m outside between a fire hydrant and the curb, a 2.5m radius beside or behind a fire hydrant, 2.0m from any servicing/utility line or structure |



- LEGEND**
- Existing Tree to Remove
 - LANDSCAPE PROPOSED
 - Deciduous Tree
 - Scott Street Small Planting Bed
 - Scott Street Large Planting Bed
 - Typical Planting Bed
 - Concrete
 - Precast Pavers
 - Concrete Seat Wall
 - Rack for 2 Bikes
 - Anchor to Concrete
 - SITE / ARCHITECTURE
 - Parking Garage Below
 - Fire Hydrant
 - FD Siamese Connection
 - Light Standard
 - Hydro/Utility Pole
 - BELOW GRADE SERVICES REFER TO CIVIL/CUP
 - WTR - U/G Water Service
 - STM - U/G Storm Service
 - SAN - U/G Sanitary Service
 - GAS - U/G Gas Service
 - BC - U/G TelCo Service
 - H - U/G Hydro Service
 - OHV - O/H Hydro Service

#	Revision	Date
5	per City Comments	2025 01 08
4	per City Comments	2024 12 13
3	per City Comments	2024 11 01
2	ZBLA	2024 09 24
1	SPC SUBMISSION 1	2024 07 31
0	REVIEW COORDINATOR	2024 06 00

Granite Private Equity Limited Partnership
16 Concourse Gate, Suite 200 Ottawa, ON K2E 7S8

GJA INC.
GINO J. AIELLO | LANDSCAPE ARCHITECT
GJAL.COM | 613 286 5130 | GINO@GJAL.COM
1155 BELLEVILLE ROAD UNIT #11, ST. CATHERINE, Q.C. J2K 2E2

MULTI UNIT RESIDENTIAL DEVELOPMENT
1950 SCOTT STREET

Landscape Plan / TCR
Scale: 1:125

