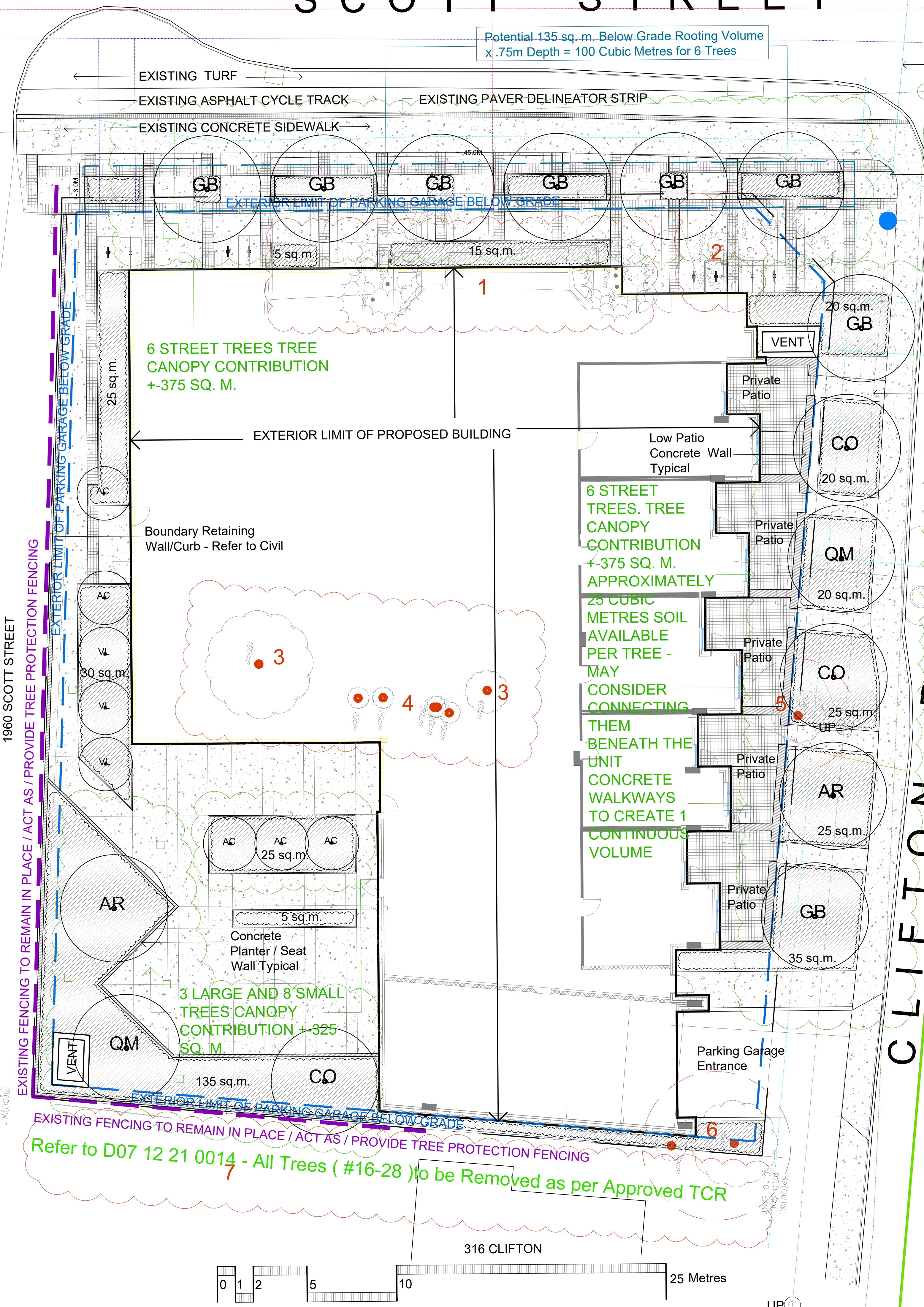


SCOTT STREET

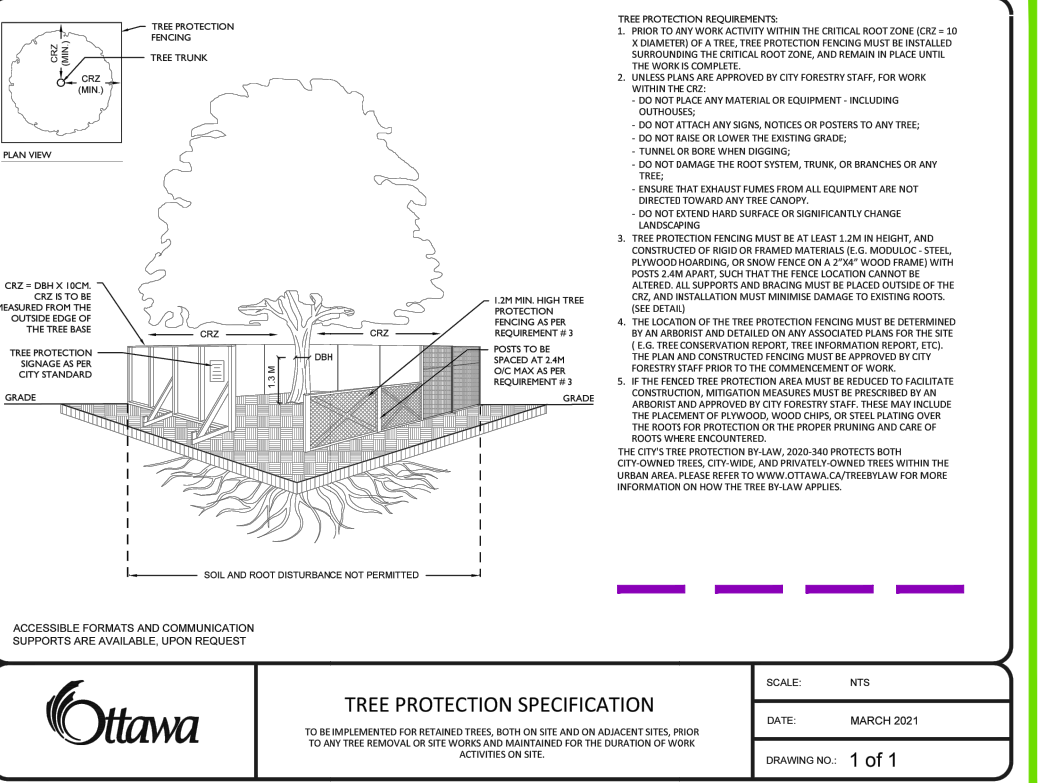
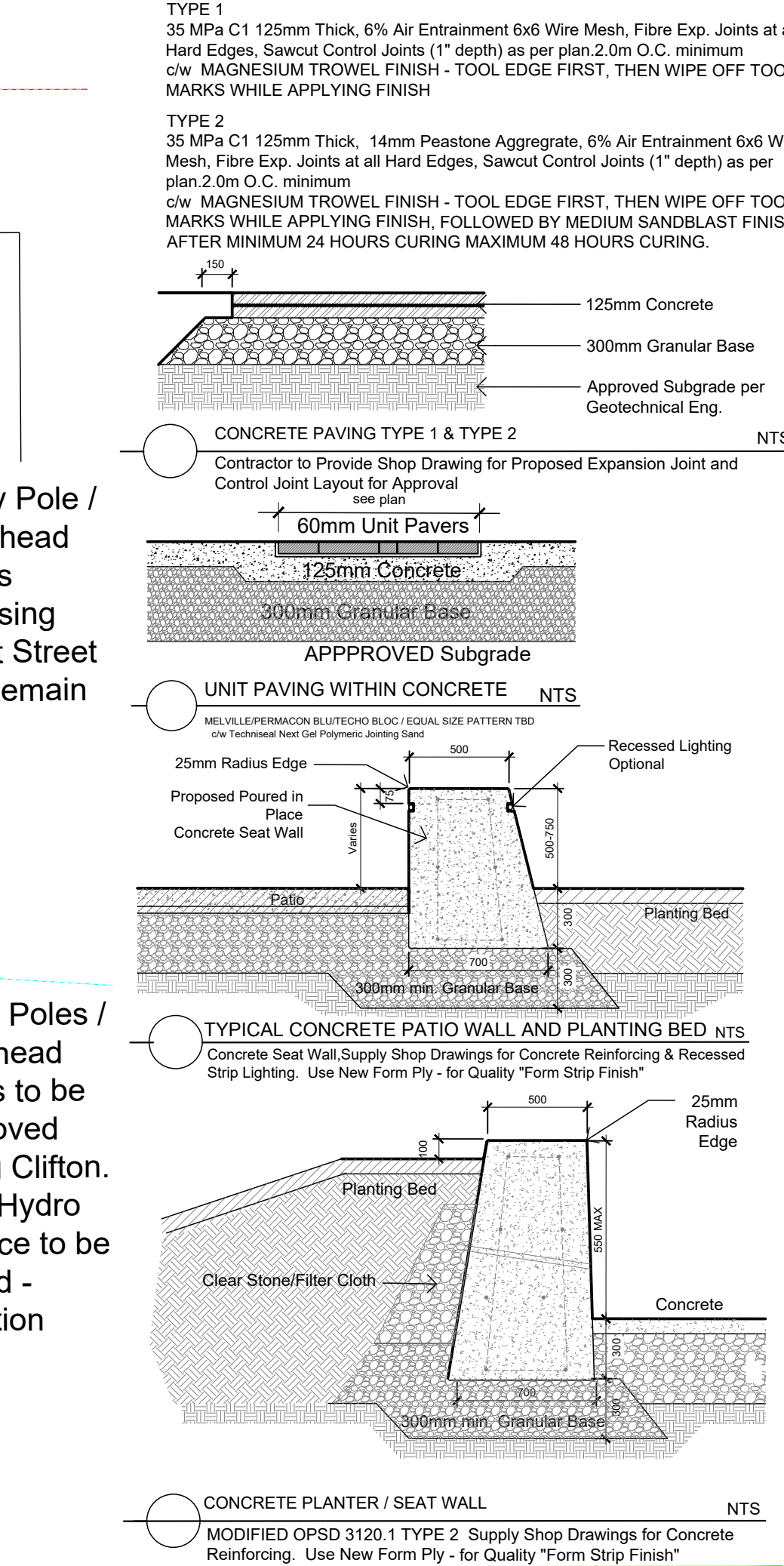
Potential 135 sq. m. Below Grade Rooting Volume
x .75m Depth = 100 Cubic Metres for 6 Trees



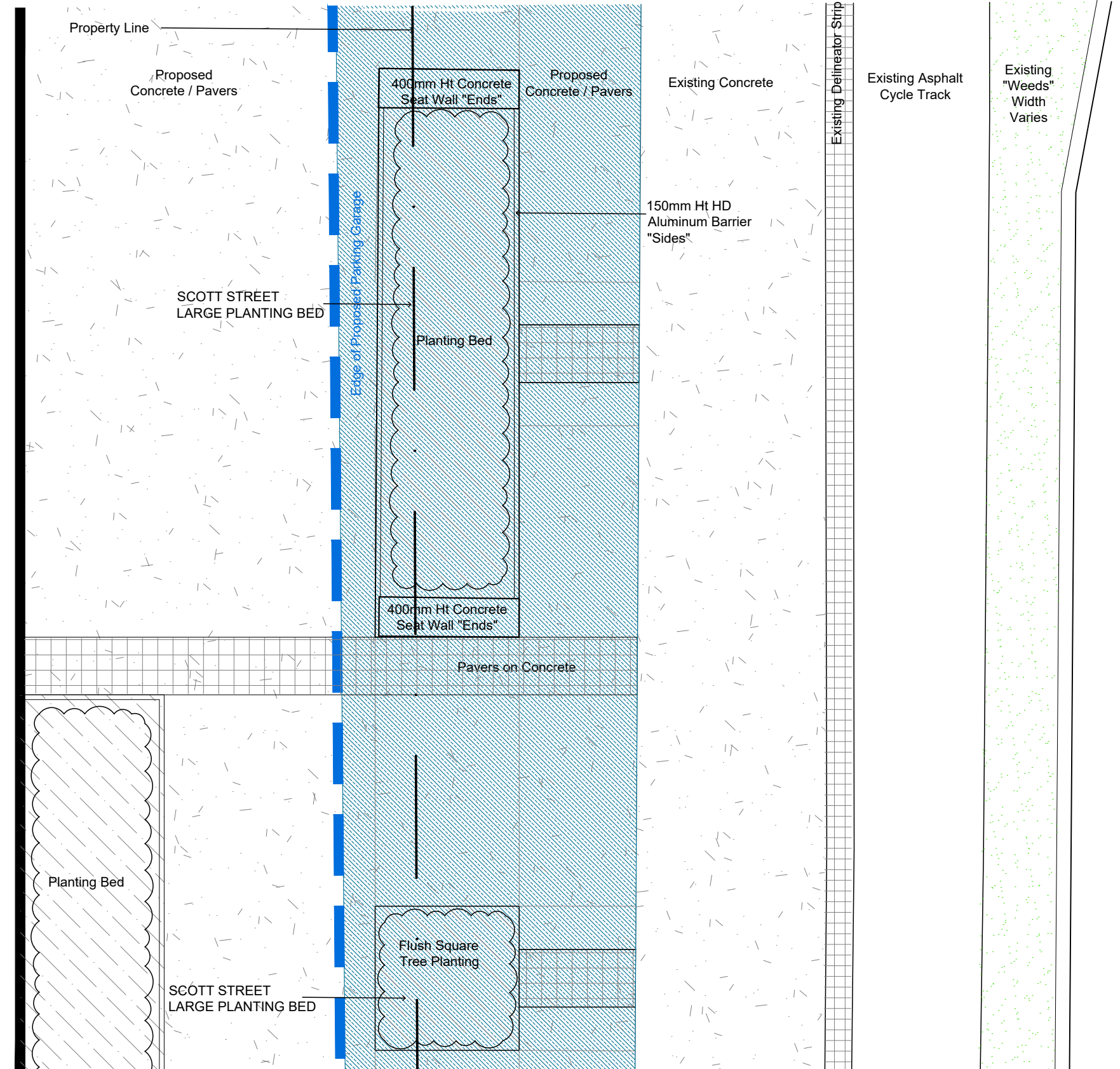
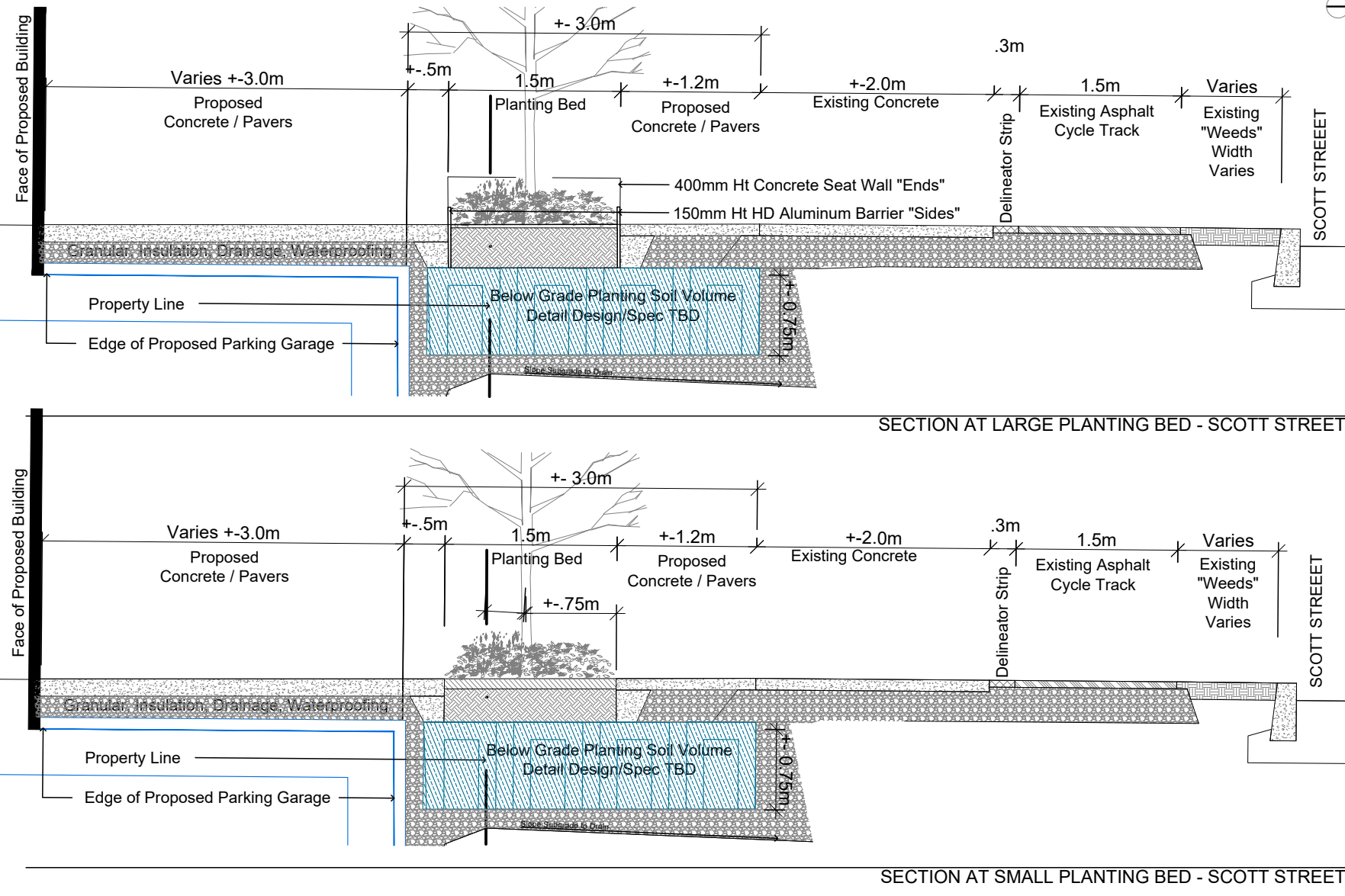
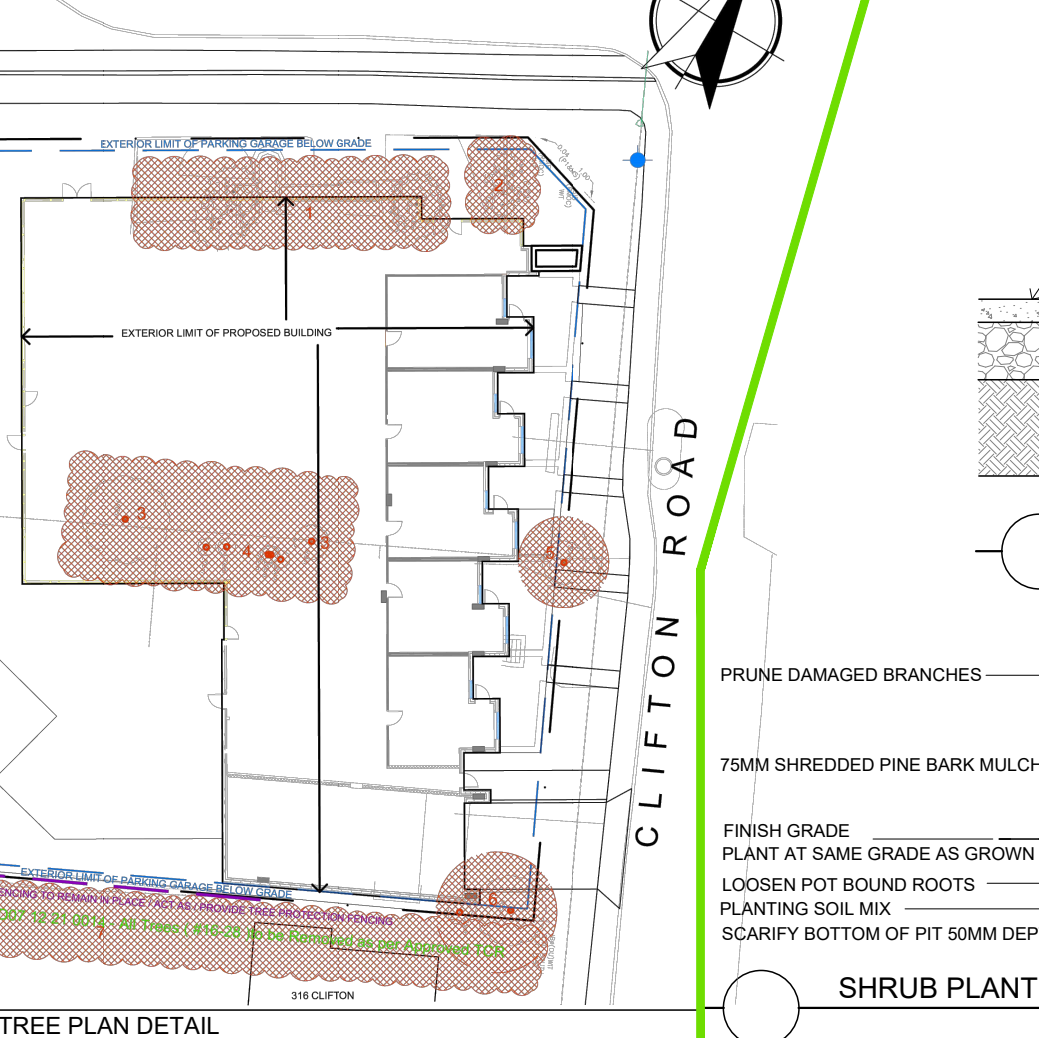
Utility Pole / Overhead Wires Crossing Scott Street To Remain

Utility Poles / Overhead Wires to be Removed along Clifton. New Hydro Service to be buried - Location TBD

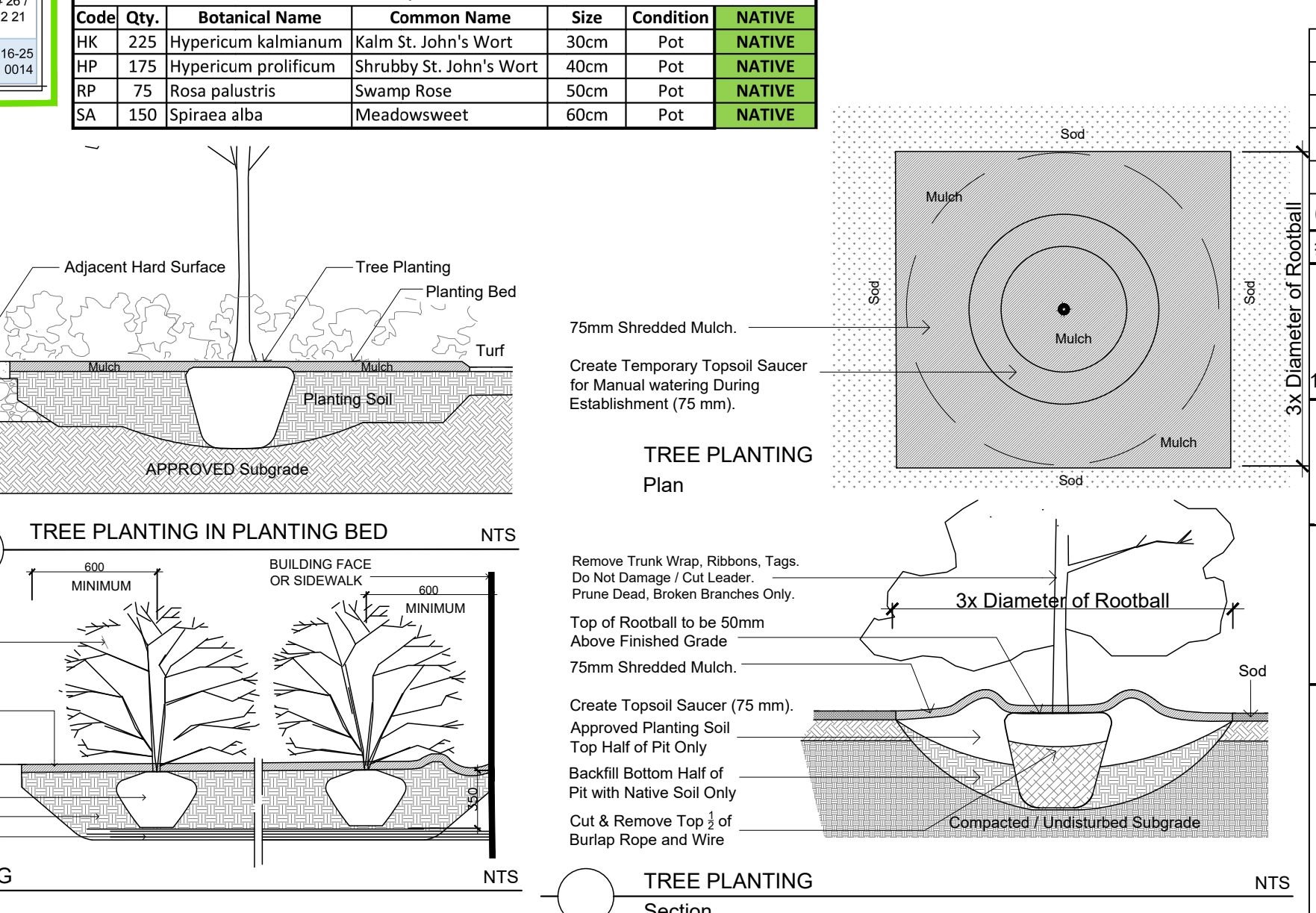
CLIFTON ROAD



TRF #	VARIETY	COMMON NAME	DESCRIPTION	OWNER	COND	REMARKS	OTHER REMARKS
1	Thuja occidentalis	White Cedar	Multiple Clumps 0-15cm	Private	Good	REMOVE	
2	Juniperus virginiana	Eastern Red Cedar	Multiple 0-15cm	Private	EXCELLENT	REMOVE	
3	Acer negundo	Manitoba Maple	2 Trees - 120cm and 90cm	Private	POOR	REMOVE	
4	Acer saccharum	Sugar Maple	5 Trees @ 30cm each	Private	Good	REMOVE	
5	Acer saccharum	Sugar Maple	60cm Heavily Hydro Pruned	Private	POOR	REMOVE	
6	Refer to TCR D07 12 21 0014	Refer to TCR D07 12 21 0014	2 Trees - 90cm and 30cm	Private	D07 12 21 0014	Refer to TCR D07 12 21 0014	Refer to TCR D07 12 21 0014
7	Refer to TCR D07 12 21 0014	Refer to TCR D07 12 21 0014	Neighbours	D07 12 21 0014	D07 12 21 0014	Refer to TCR D07 12 21 0014	Refer to TCR D07 12 21 0014



CODE	QUANTITY	BOTANICAL NAME	COMMON NAME	I&B SPECIMEN	SPREAD	NATIVE
AC	5	Amelanchier canadensis	Tree Serviceberry	50mm cal	5M	NATIVE
AR	1	Acer rubrum	Red Maple	60mm cal	12M	NATIVE
CO	1	Celtis occidentalis	Common Hackberry	60mm cal	18M	NATIVE
GB	0	Ginkgo biloba	Maidenhair Tree	60mm cal	12M	NATIVE
QM	1	Quercus macrocarpa	Bur Oak	60mm cal	20M	NATIVE
VL	3	Viburnum lentago	Nannyberry	50mm cal	3M	NATIVE
TOTALS	11	12				



Drawing Remains the Property of Copyright Reserved by GJA INC. Do Not Use or Reproduce Without Approval of Gino J. Aiello.

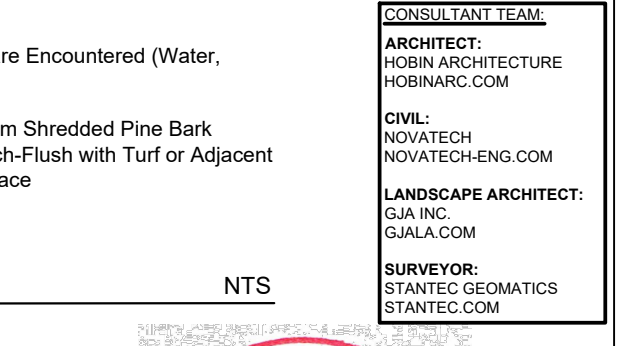
PLANTING MIX TO BE APPROVED BY LANDSCAPE ARCHITECT | PLANT MATERIAL TO MEET CNLA STANDARDS PRIOR TO PLANTING | ALL MATERIALS & WORK TO BE MAINTAINED UNTIL FINAL ACCEPTANCE, INCLUDE 1 YEAR WARRANTY FROM DATE OF FINAL ACCEPTANCE | REFER TO CIVIL ENGINEER'S DRAWING FOR ELEVATIONS / GRADING |

The Landscape Plan is to be read in conjunction with the grading, servicing, site and survey plan. All trees to be preserved on or directly adjacent to the site will be protected | Plant material are to be installed a minimum of 3.0m away from any part of any hydro transformer, 3.0m corridor between a fire hydrant and the curb, a 2.5m radius between a fire hydrant, 2.0m from any servicing/utility line or structure |

Cicum Bicycle Rack
95-10-10179-CicumBikeRack

HAUSER
SITE FURNITURE

- LEGEND
- LANDSCAPE REMOVALS
 - Existing Tree to Remove
 - LANDSCAPE PROPOSED
 - Deciduous Tree
 - Scott Street Small Planting Bed
 - Scott Street Large Planting Bed
 - Typical Planting Bed
 - Concrete
 - Precast Pavers
 - Concrete Seat Wall Rack for 2 Bikes
 - Anchor to Concrete
- SITE / ARCHITECTURE
- Parking Garage Below
 - Fire Hydrant
 - FD Siamese Connection
 - Light Standard
 - Hydro/Utility Pole
- BELOW GRADE SERVICES REFER TO CIVIL/CUP
- WTR U/G Water Service
 - STM U/G Storm Service
 - SAN U/G Sanitary Service
 - GAS U/G Gas Service
 - BC U/G TelCo Service
 - H U/G Hydro Service
 - OHW O/H Hydro Service



CONTRACT #	DATE	DESCRIPTION
1	2024 07 31	SPC SUBMISSION 1
0	2024 06 00	REVIEW/COORDINATION
#		Revision

PROPERTY OWNER
Granite Private Equity Limited Partnership
16 Concourse Gate, Suite 200 Ottawa, ON K2E 7S8

GJA INC.
GINO J. AIELLO | LANDSCAPE ARCHITECT
GJALCA.COM | 613 286 5130 | GINO@GJALCA.COM
1150 DEWILBY ROAD UNIT #11, OTTAWA ONTARIO K1T 5Z2

MULTI UNIT RESIDENTIAL DEVELOPMENT
1950 SCOTT STREET

Landscape Plan / TCR

Scale: 1:125