

GENERAL NOTES

- 1. ALL WORKS AND MATERIALS SHALL CONFORM TO THE LATEST REVISIONS OF THE STANDARDS AND SPECIFICATIONS OF THE CITY OF OTTAWA...
2. THE LOCATION OF UTILITIES IS APPROXIMATE ONLY...
3. THE CONTRACTOR SHALL VERIFY THE LOCATION AND ELEVATION OF EXISTING SERVICES PRIOR TO ANY CONSTRUCTION...

STORM SEWER NOTES:

- 1. ALL STORM SEWER MATERIALS AND INSTALLATION SHALL CONFORM TO THE LATEST REVISIONS OF THE STANDARDS AND SPECIFICATIONS OF THE CITY OF OTTAWA...
2. ALL PVC STORM SEWERS ARE TO BE SDR 35 APPROVED PER C.S.A. B1822...
3. THE CONTRACTOR SHALL CONSTRUCT FLEXIBLE STORM SEWERS IN ACCORDANCE WITH OPSD 802.010 AND 802.013...

WATERMAIN NOTES:

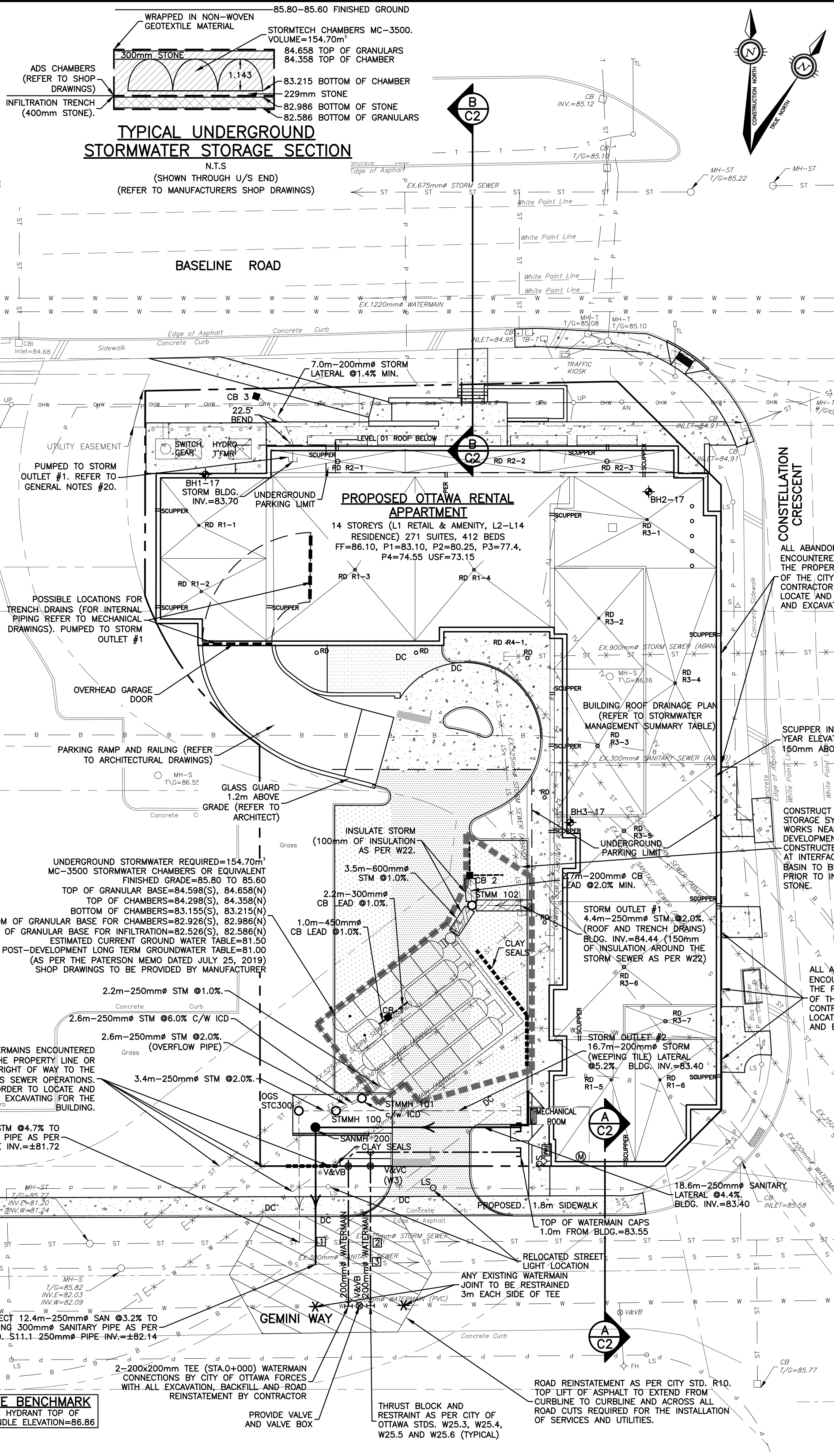
- 1. ALL WATERMAIN MATERIALS AND INSTALLATION SHALL CONFORM TO THE LATEST REVISIONS OF THE STANDARDS AND SPECIFICATIONS OF THE CITY OF OTTAWA...
2. NO WORK SHALL COMMENCE UNLESS A CITY WATER WORKS INSPECTOR IS ON SITE...
3. WATERMANS TRENCH AND BEDDING SHALL BE IN ACCORDANCE WITH CITY OF OTTAWA STANDARD W17...

ROAD NOTES:

- 1. PAVEMENT REINSTATEMENT FOR SERVICE AND UTILITY CUTS SHALL BE IN ACCORDANCE WITH CITY OF OTTAWA STD. R10 AND OPSD 509.010...
2. GRANULAR "A" SHALL BE PLACED TO A MINIMUM THICKNESS OF 300mm...
3. ALL GRANULAR FOR ROADS SHALL BE COMPACTED TO A MINIMUM OF 95% STANDARD PROCTOR MAXIMUM DRY DENSITY...

SANITARY SEWER NOTES:

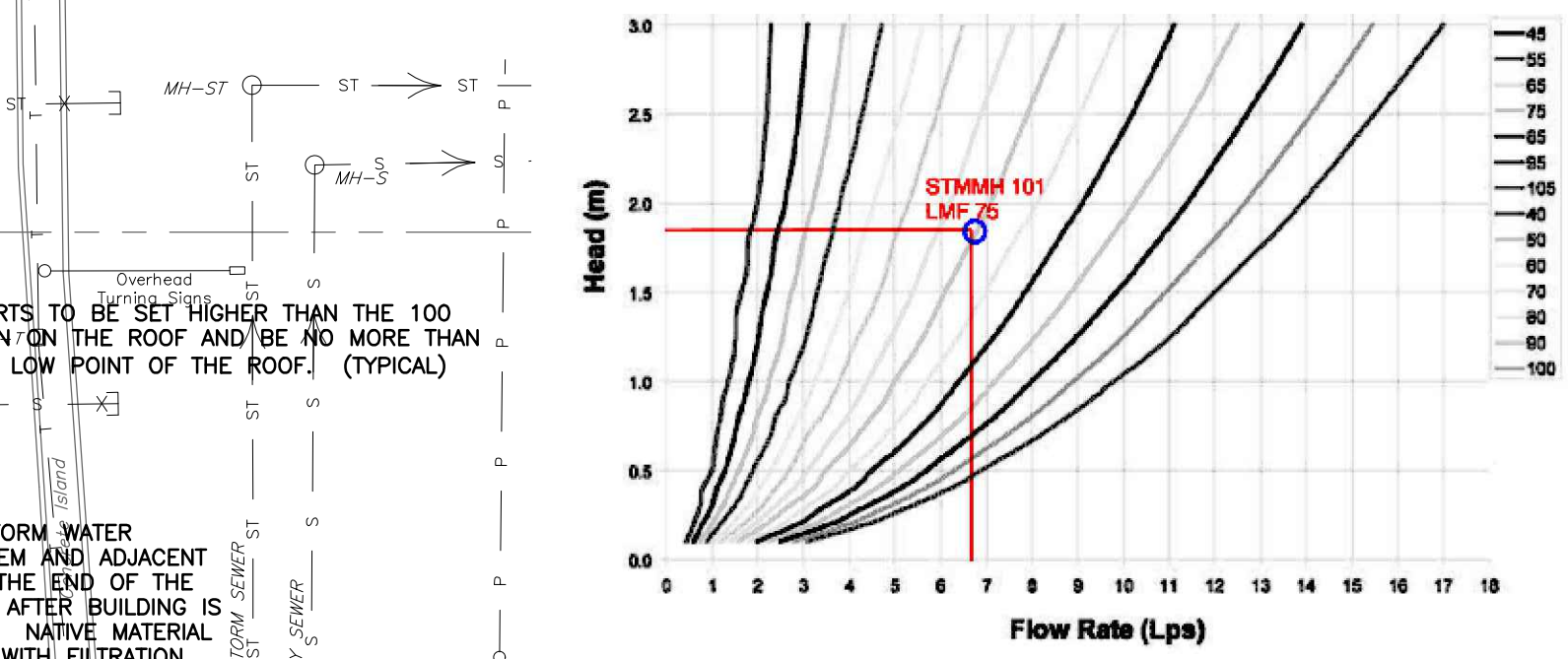
- 1. ALL SANITARY SEWER MATERIALS AND INSTALLATION SHALL CONFORM TO THE LATEST REVISIONS OF THE STANDARDS AND SPECIFICATIONS OF THE CITY OF OTTAWA...
2. ALL SANITARY SEWERS SHALL BE PVC SDR 35, IPEX "RING-TITE" (OR EQUIVALENT)...
3. SANITARY SEWER TRENCH AND BEDDING SHALL BE AS PER CITY OF OTTAWA STD. S6 AND S7...



STRUCTURE TABLE with columns: STRUCTURE NUMBER, TYPE, LID ELEV (m), INVERT IN (m) and DIA (mm), INVERT OUT (m) and DIA (mm), SIZE, REFERENCE, FRAME, COVER, Comment.

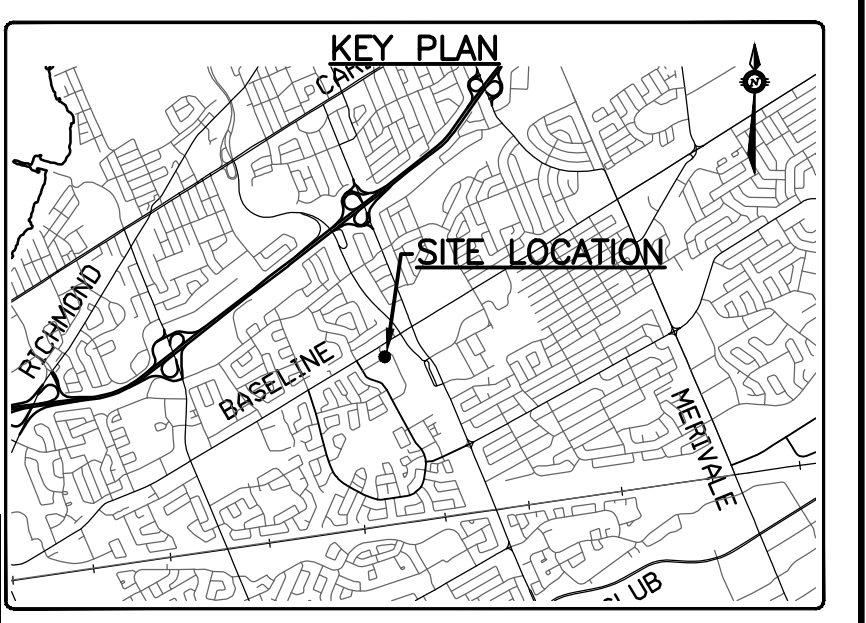
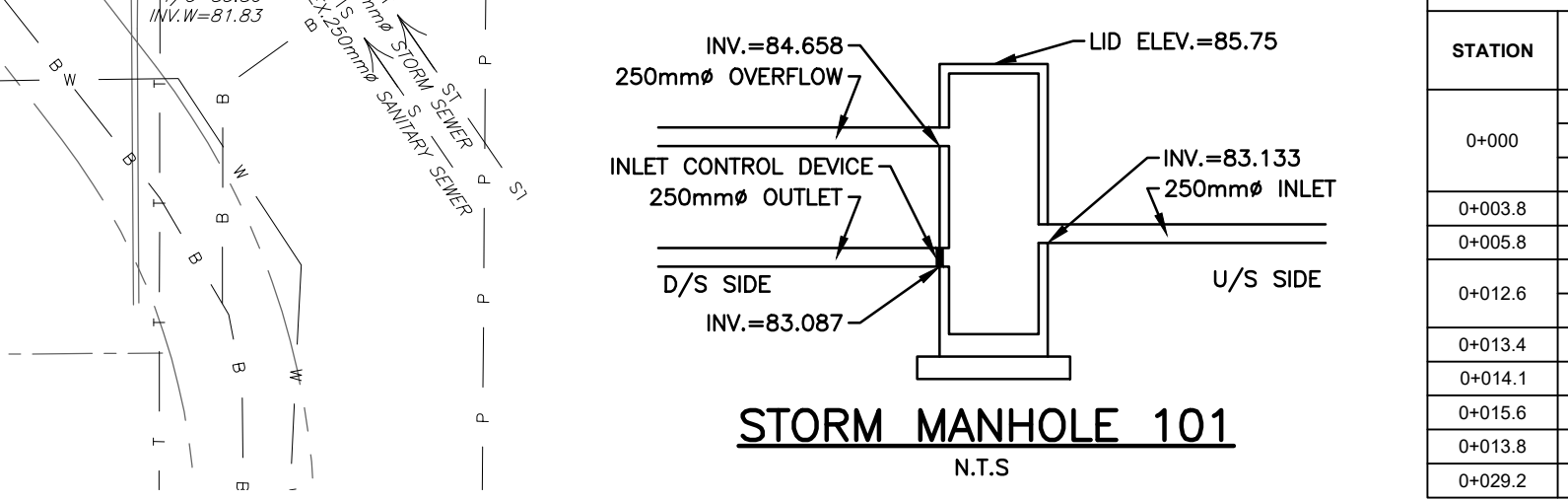
SEWER TABLE with columns: STRUCTURE, TYPE, INVERT ELEV (m), NOMINAL DIA (mm), LENGTH (m), Type, Class, Comment.

STORMWATER MANAGEMENT SUMMARY TABLE with columns: Control Location, Post-Dev Area No., Max Flow (L/sec), Max Head (m), Type, Model, Number of Drains, Weir Position.



ROOF PONDING TABLE with columns: Area #, 100-year Ponding Depth (mm), Weir Type, No of Weirs per Drain, Weir Position.

WATERMAIN / SEWER CROSSING TABLE with columns: LOCATION, FINISHED GRADE (m), SANITARY SEWER (m), DIAM (mm), OBV ELEV (m), STORM SEWER (m), DIAM (mm), OBV ELEV (m), WATERMAIN (m), DIAM (mm), OBV ELEV (m), CLEARANCES (mm).



- EXISTING LEGEND: SURVEY MONUMENT PLANTED, SURVEY MONUMENT FOUND, OVERHEAD WIRES, UTILITY POLE, LIGHT STANDARD, CATCH BASIN, TOP OF GRATE, GAS METER, TRAFFIC CONTROL BOX, GAS MAIN, COMMUNICATIONS, TELEVISION, BELL TELEPHONE, POWER, TRAFFIC AND MANHOLE, SANITARY SEWER AND MANHOLE, WATERMAIN AND VALVE AND VALVE BOX, FIRE HYDRANT, ABANDONED STORM SEWER, ABANDONED SANITARY SEWER, ABANDONED WATERMAIN, EXISTING TREES/SHRUBS, BOLLARD, BOARD FENCE, WOODEN RETAINING WALL, CENTRELINE.

- PROPOSED LEGEND: PROPERTY LINE, 250mm SAN PROPOSED SANITARY SEWER, 250mm STM PROPOSED STORM SEWER, SANMH 200 PROPOSED SANITARY MANHOLE, STMH 100 PROPOSED STORM MANHOLE, OGS PROPOSED OIL GRIT SEPARATOR, PROPOSED CATCH BASIN c/w 150mm SUBDRAIN (3.0m EACH DIRECTION), PROPOSED ROOF DRAIN, PROPOSED WATERMAIN, CLAY SEALS, PROPOSED WATER VALVE & VALVE BOX, PROPOSED WATER METER, PROPOSED REMOTE WATER METER, PROPOSED SIAMESE CONNECTION, FINISHED FLOOR ELEVATION UNDERSIDE OF FOOTING ELEVATION, PARKING LEVEL 1, TOP OF GRATE, INLET CONTROL DEVICE, PROPOSED BUILDING ENTRY/EXIT, BOREHOLE LOCATION AND NUMBER.

APPROVED By Kersten Nitsche at 11:10 am, Nov 08, 2024

Kersten Nitsche

KERSTEN NITSCH, MCIP RPP MANAGER (A), DEVELOPMENT REVIEW WEST PLANNING, DEVELOPMENT AND BUILDING SERVICES DEPARTMENT, CITY OF OTTAWA

Revision table with columns: REV, REVISION DESCRIPTION, DATE, BY, APPD, REV, REVISION DESCRIPTION, DATE, BY, APPD.

Project information including client details (BASELINE CONSTELLATION PARTNERSHIP INC.), project name (OTTAWA RENTAL APARTMENT), location (2140 BASELINE ROAD), and drawing title (SITE SERVICING PLAN).