

No.	Issued	Date	By
4	REVISED COMMENTS	2025-06-13	MD
3	REVISED COMMENTS	2024-12-18	MD
2	REVISED COMMENTS	2024-09-27	MD
1	ISSUED FOR SPA	2024-07-15	MD

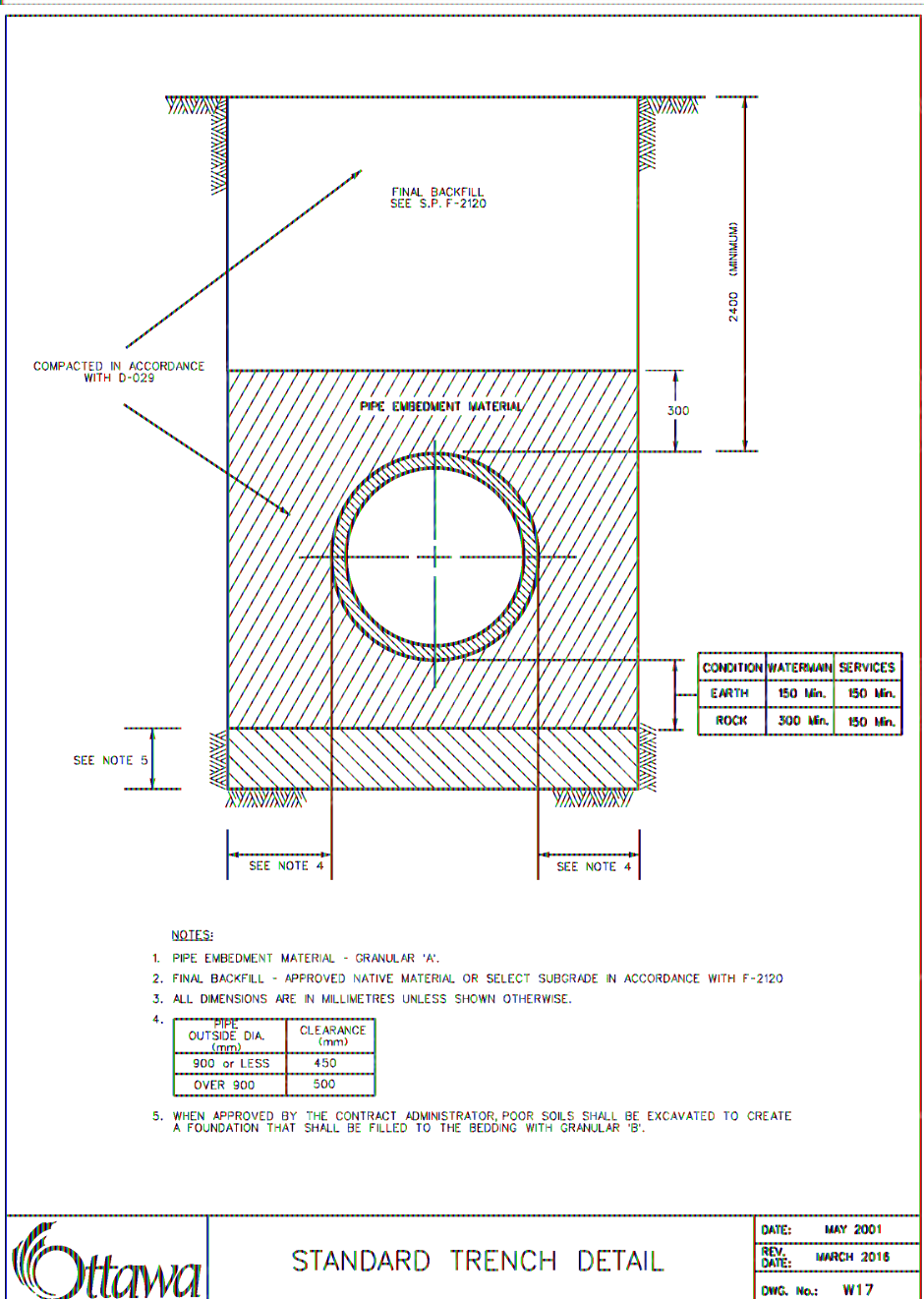
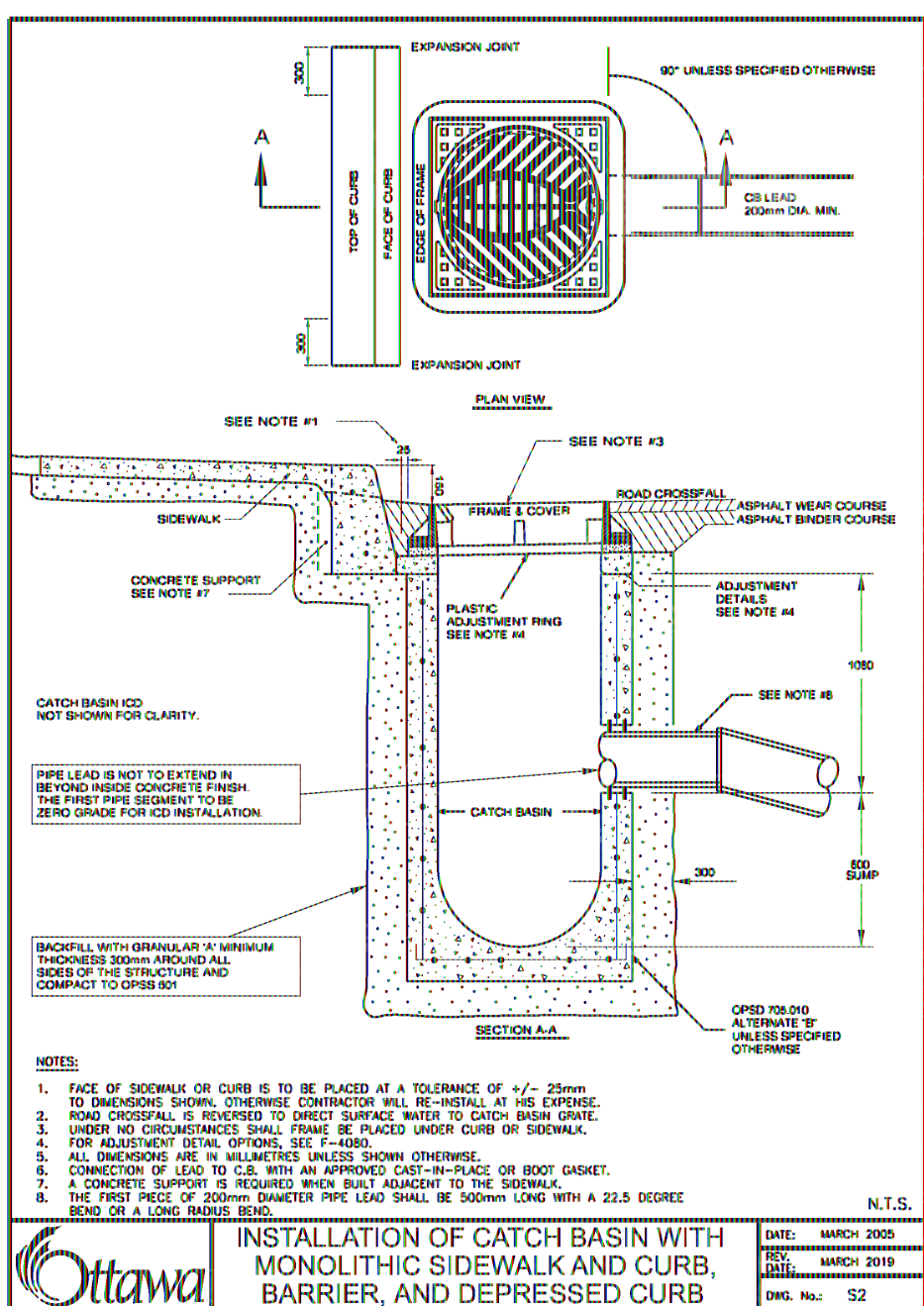
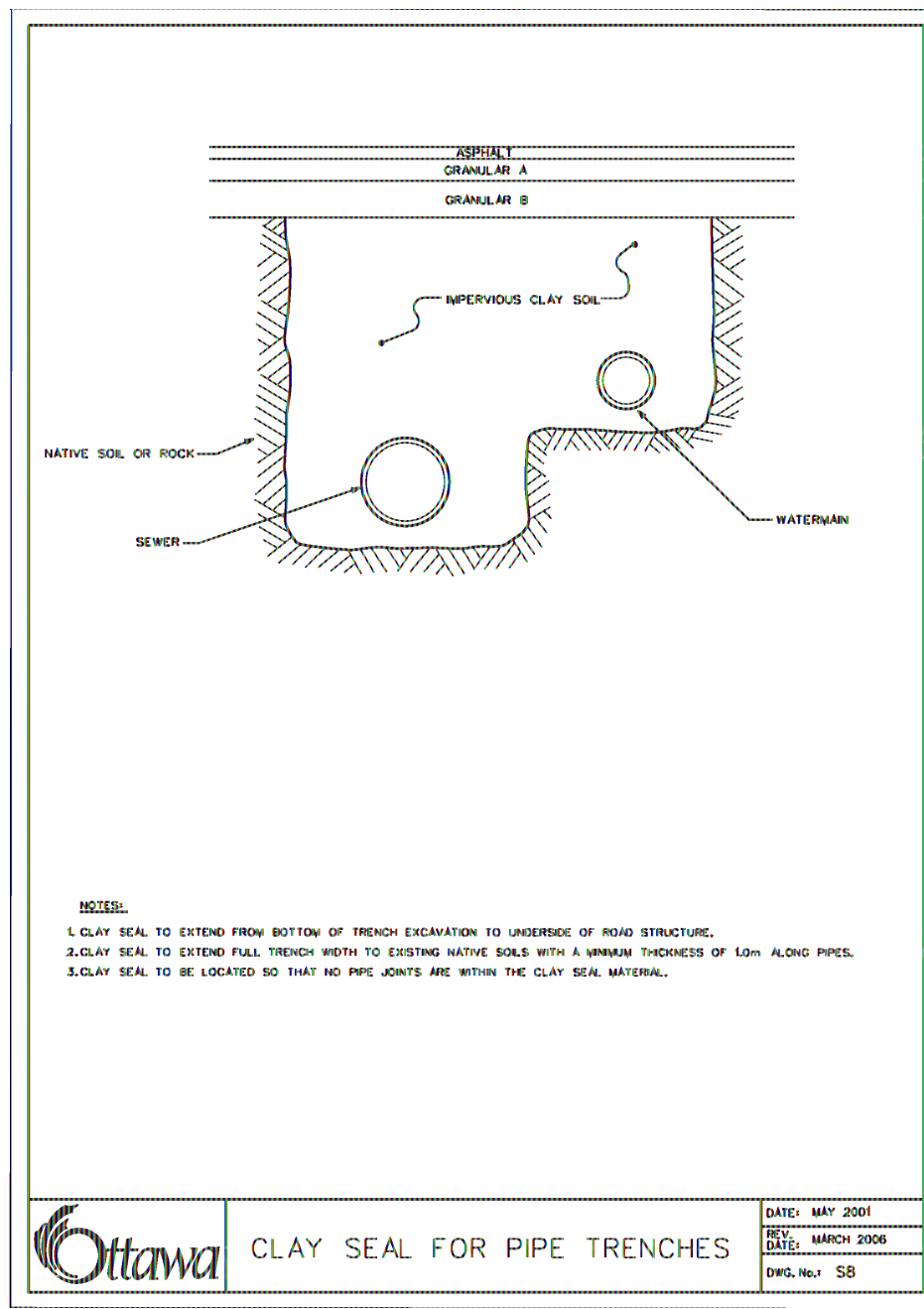
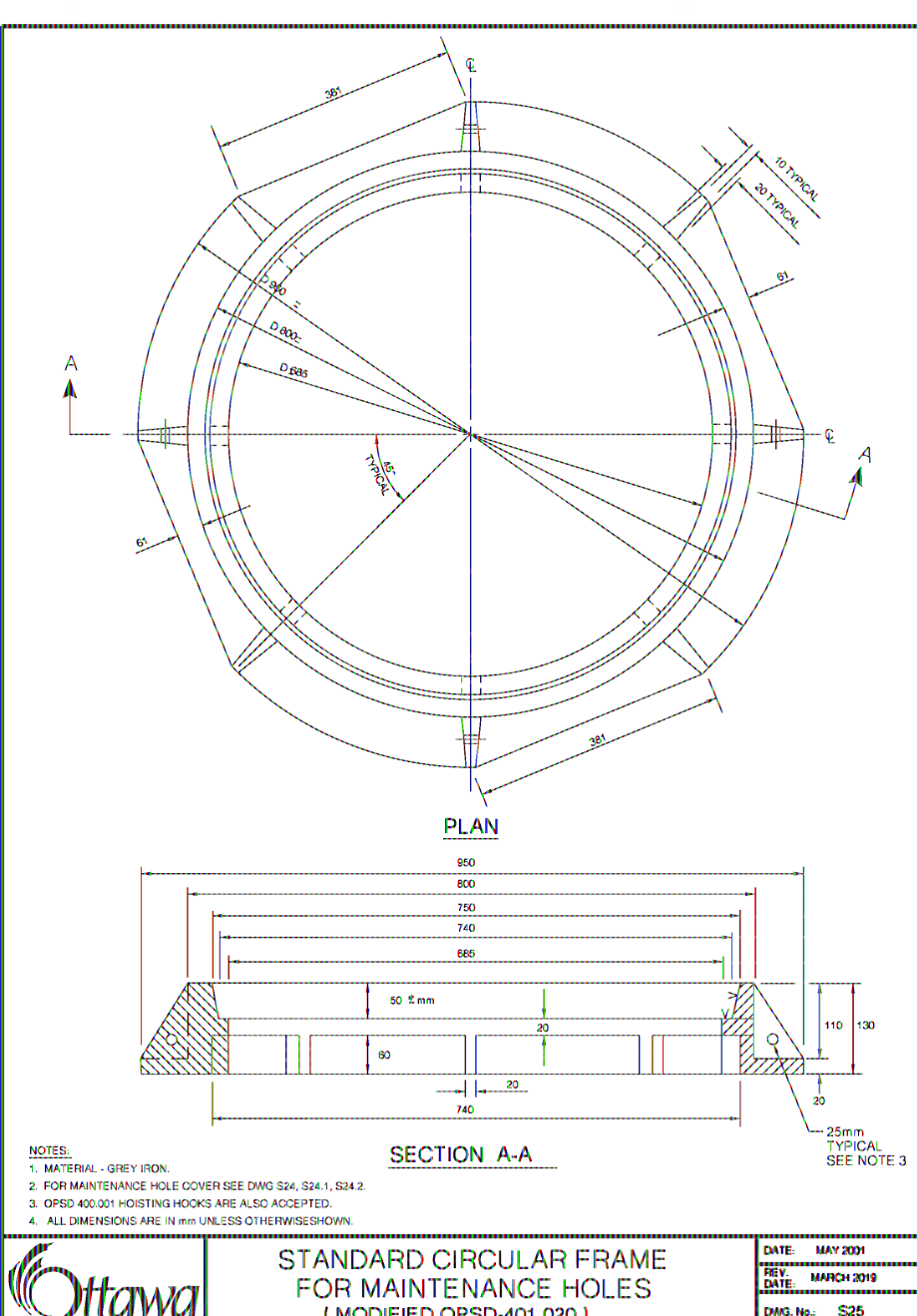
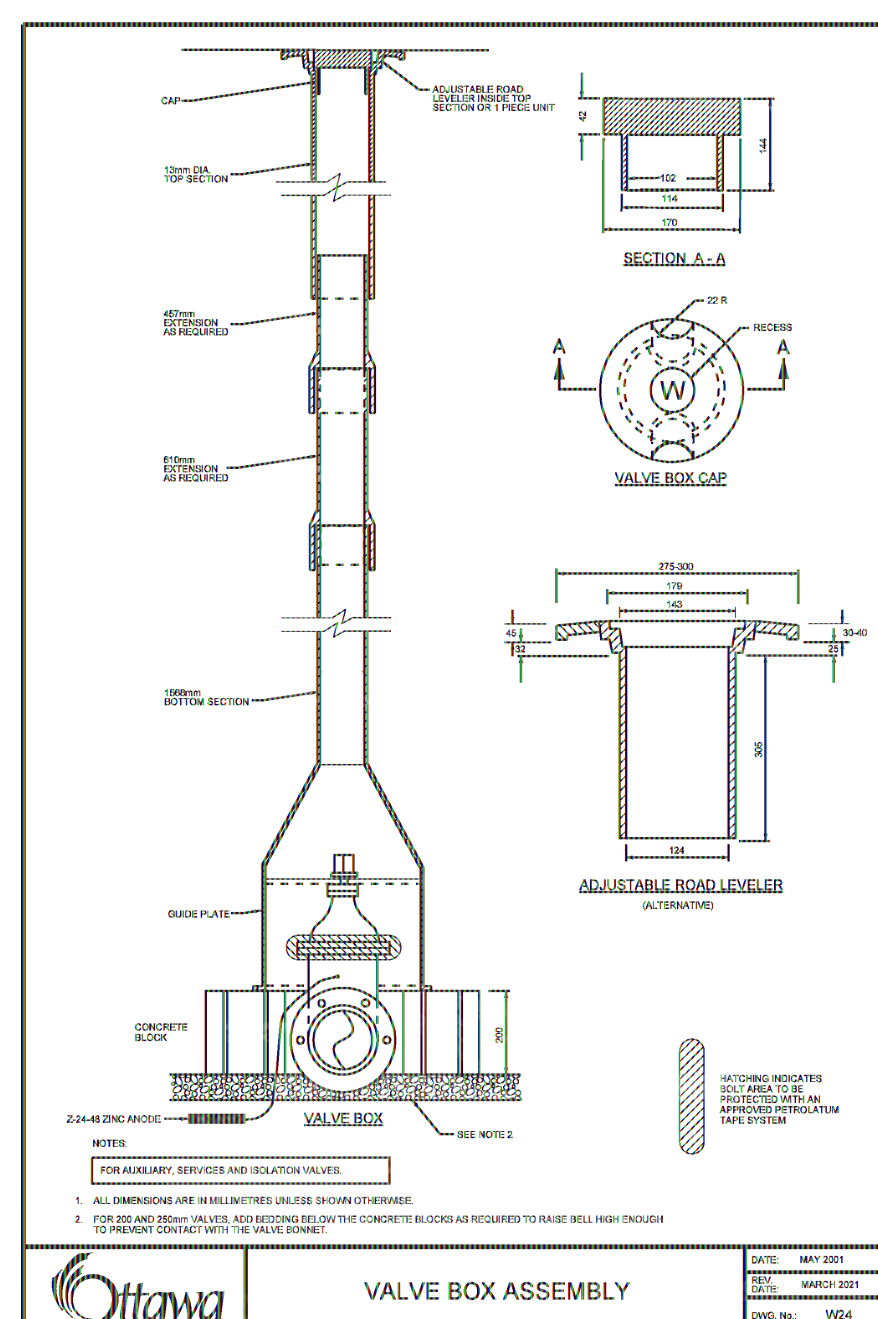
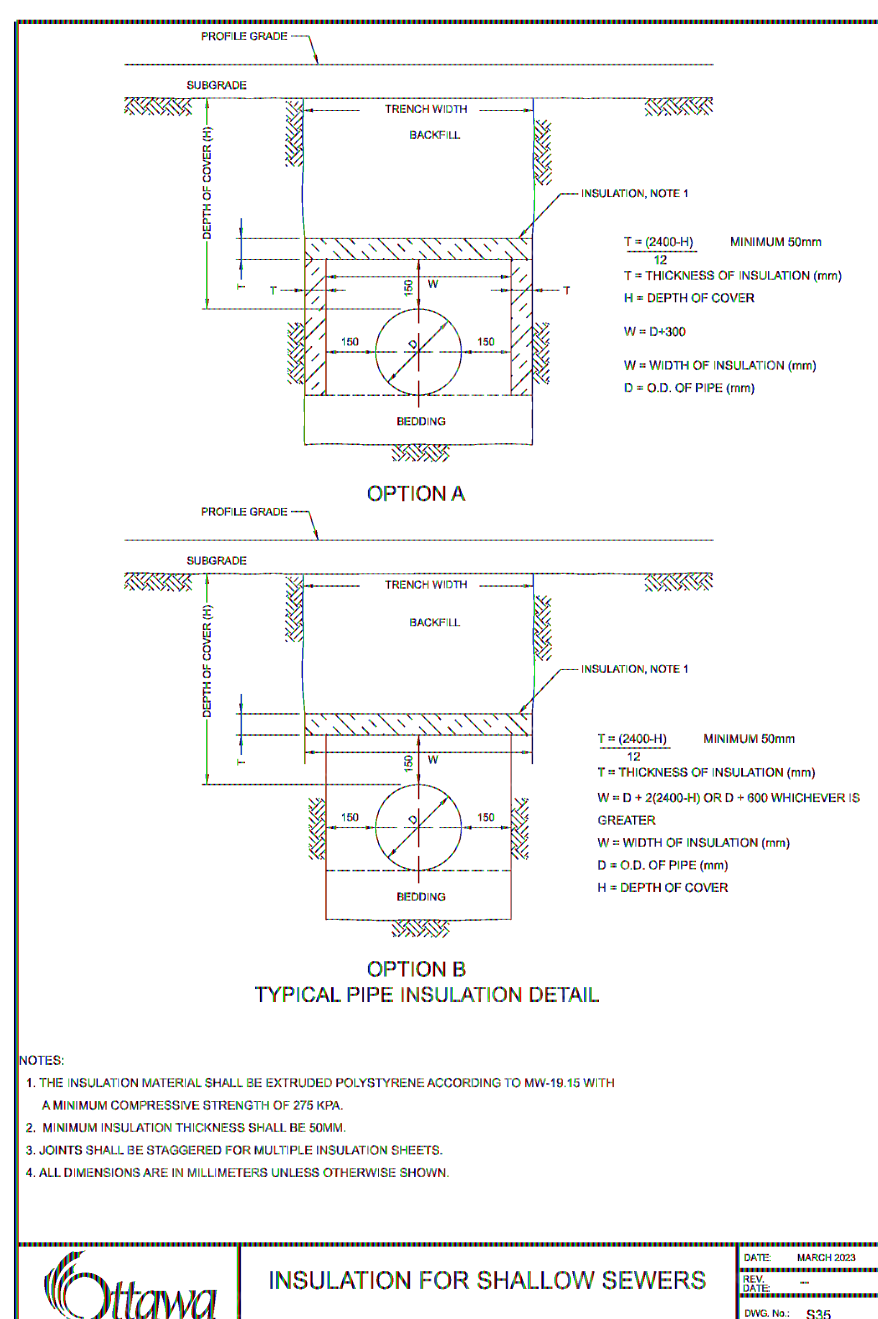
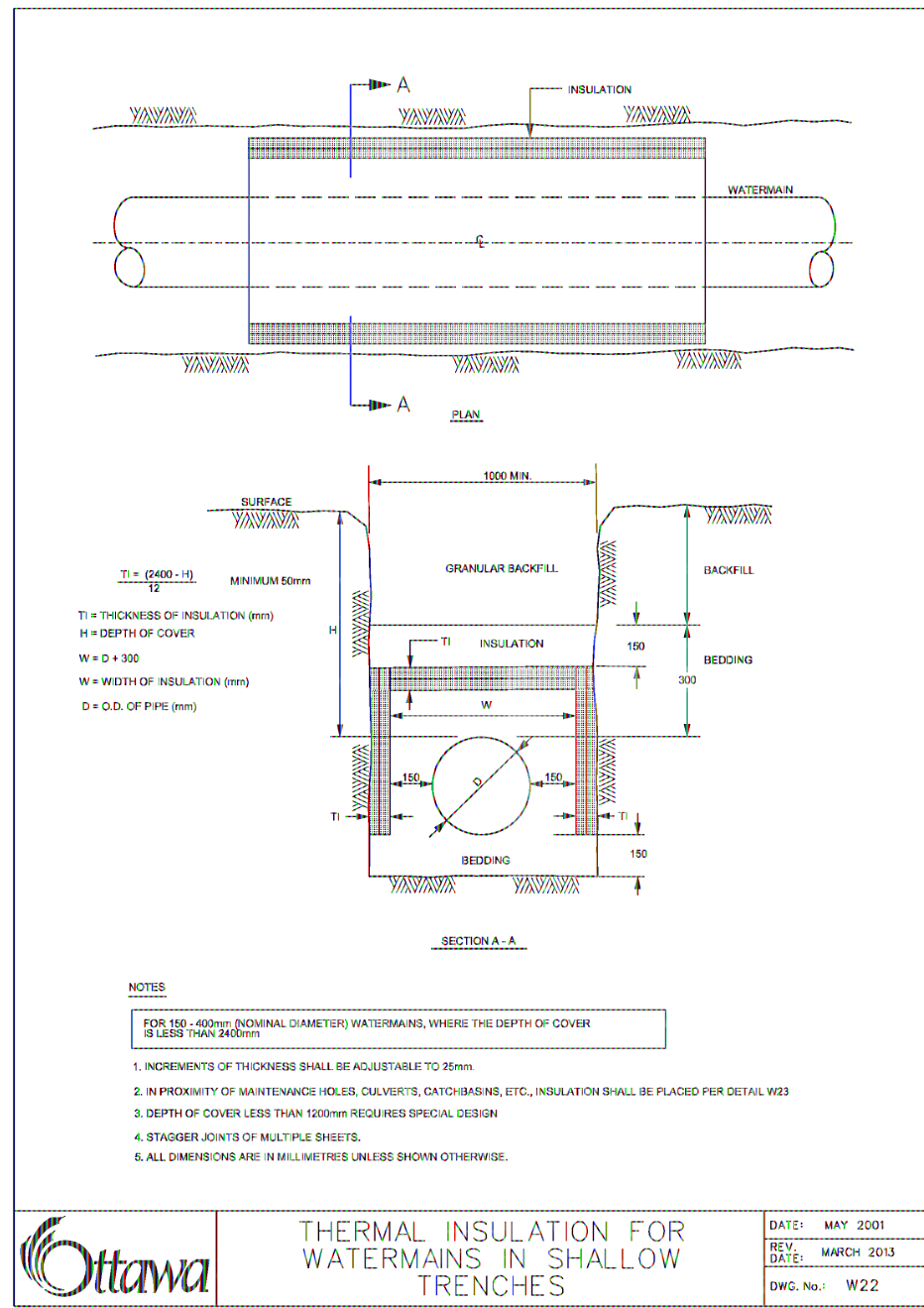
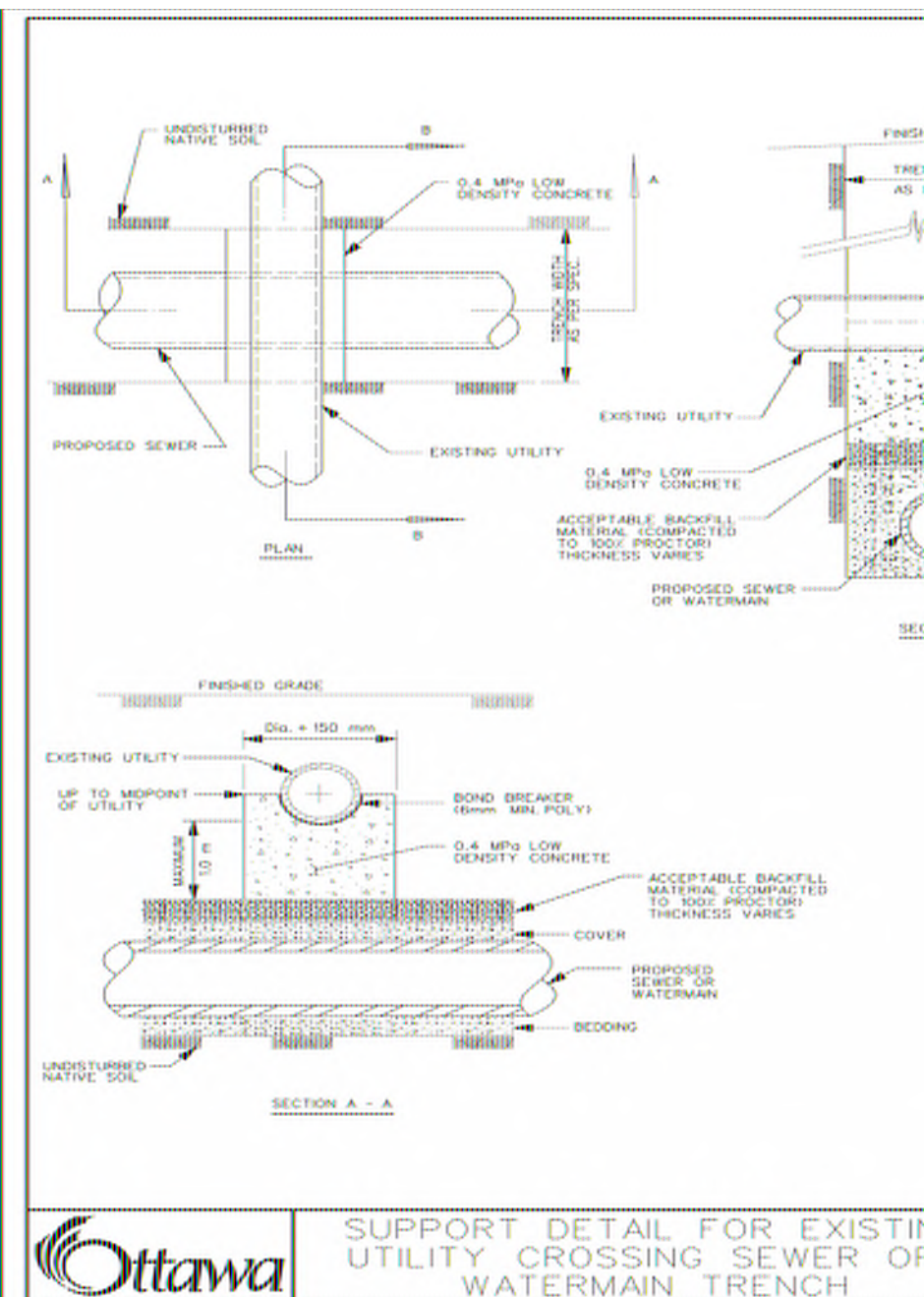
THE LOCATION OF ALL UNDER- / ABOVE-GROUND UTILITIES AND SERVICES IS APPROXIMATE ONLY AND WHERE SHOWN ON THE DRAWING(S) THE ACCURACY OF THE UTILITIES AND SERVICES IS NOT GUARANTEED. THE OWNER AND / OR HIS REPRESENTATIVE SHALL DETERMINE THE LOCATION OF ALL UTILITIES AND SERVICES BEFORE COMMENCING ANY CONSTRUCTION ACTIVITIES.

CONTRACTOR MUST CHECK & VERIFY ALL DIMENSIONS ON SITE.

THIS DRAWING IS NOT TO BE USED FOR CONSTRUCTION.

**WPE ENGINEERING LTD.**

222 - 7250 KEELE STREET  
VAUGHAN, ON. L4K 1Z8  
T: (416) 578 8682  
DESIGN@WPEENGINEERING.COM



**APPROVED**  
By Kersten Nitsche at 1:56 pm, Jul 18, 2025

*Kersten Nitsche*

**KERSTEN NITSCHKE, MCIP RPP**  
MANAGER (A), DEVELOPMENT REVIEW WEST  
PLANNING, DEVELOPMENT AND BUILDING SERVICES  
DEPARTMENT, CITY OF OTTAWA