

SURVEYOR'S REAL PROPERTY REPORT
PART 1 Plan of
LOTS 457, 458, 459, 460, 466, 467 AND
LOTS 470 TO 482 (INCLUSIVE) AND
LOTS 487 TO 503 (INCLUSIVE) AND
LOTS 506 TO 522 (INCLUSIVE) AND
LOTS 529 TO 552 (INCLUSIVE) AND
PART OF LOTS 461, 462, 463, 464, 465
AND PART OF AVENUE J CLOSED BY
BY-LAW 193-50 (INST. OT3267) AND
BY-LAW 6-67 (INST. OT74046) AND
PART OF AVENUE K CLOSED BY
BY-LAW 127-50 (INST. OT2235)
REGISTERED PLAN 320
CITY OF OTTAWA
 Surveyed by Annis, O'Sullivan, Vollebek Ltd.

Scale 1 : 300
 0 3 6 9 12 Metres

Metric
 DISTANCES SHOWN ON THIS PLAN ARE IN METRES AND
 CAN BE CONVERTED TO FEET BY DIVIDING BY 0.3048

Surveyor's Certificate
 I CERTIFY THAT:
 1. This survey and plan are correct and in accordance with the Surveyors Act and the Land Titles Act and the regulations
 2. The survey was completed on the 6th day of January, 2020.

DATE
 JAN 21 2020
 E. M. Vollebek
 Ontario Land Surveyor

PART 2
 THIS PLAN MUST BE READ IN CONJUNCTION WITH
 SURVEY REPORT DATED 21-01-2020

ANIS, O'SULLIVAN, VOLLEBEK LTD. agents for
 Colorado Bridgeport,
 11000 Highway 101,
 Mississauga, Ontario L4W 1G7
 copies of the Surveyor's Real Property Report in transactions involving The Client.

Notes & Legend

- Survey Monument Planted
- Survey Monument Found
- Staked Iron Bar
- Staked Standard Iron Bar
- Iron Bar
- Cut Cross
- Concrete Pin
- Witness
- Measured
- (AOG)
- (PI)
- (P2)
- (P3)
- (P4)
- Gas Meter
- Hydro Meter
- Sign
- Stake
- Utility Pole
- Archer
- Light Standard
- Fire Hydrant
- Overhead Wires
- Chain Link Fence
- Post and Wire
- Bell Terminal Box
- Retaining Wall
- C/L
- RW

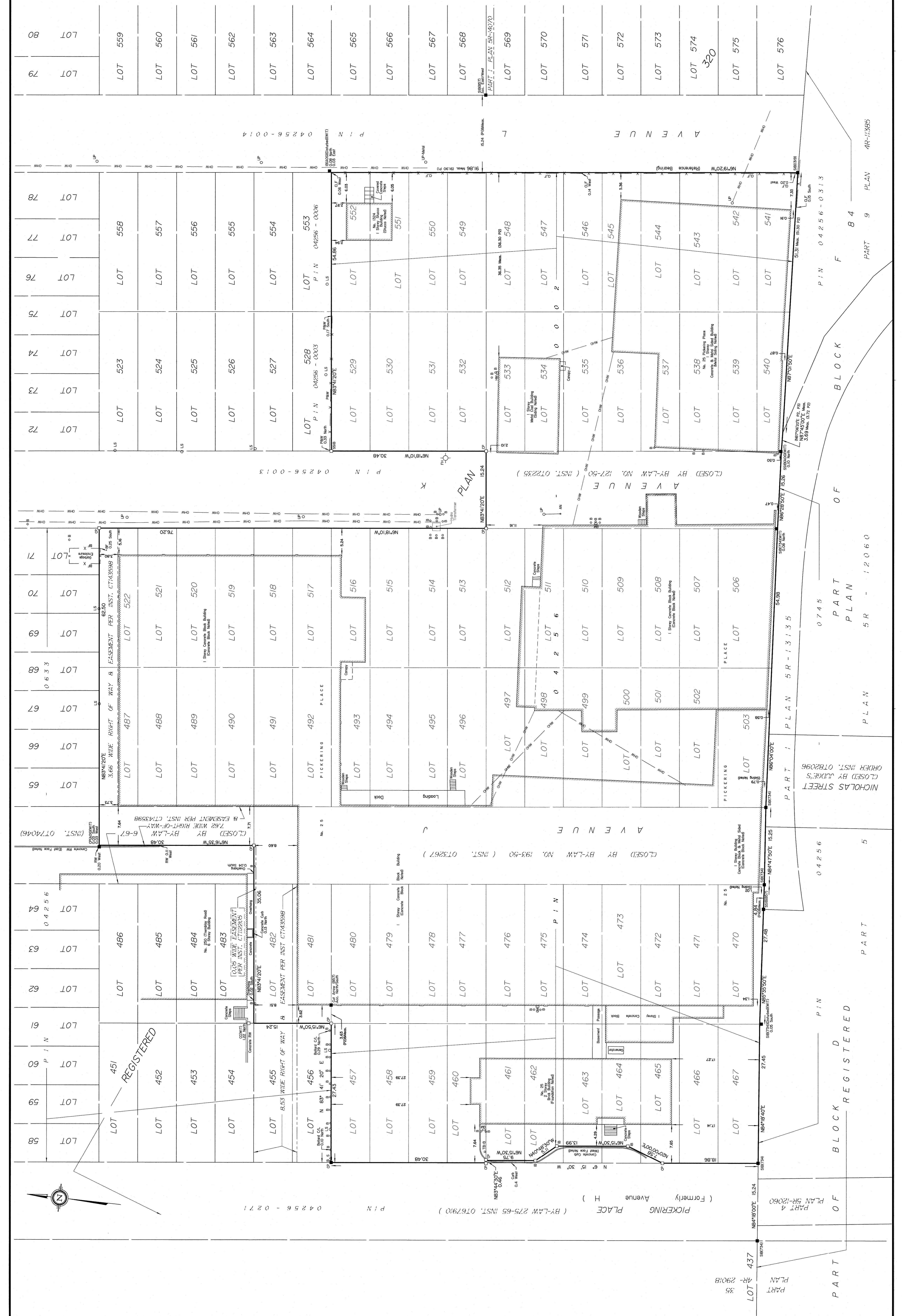
All Bearings, Distances and Building Lines are per (AOG) Plan dated January 26, 1988 unless otherwise noted.

Bearings are given from Westward limit of Avenue L shown to Eastward limit of Avenue L. All bearings are referred to the Central Meridian of MTN Zone 9 (17°30' West Longitude) (NAD-83) (original).

ASSOCIATION OF ONTARIO
 LAND SURVEYORS
 PLAN SUBMISSION FORM
 2/14/177

ANIS, O'SULLIVAN, VOLLEBEK LTD.
 14 Appena, One K2E 7S5
 Phone: (613) 277-8866 / Fax: (613) 727-1079

PART 1 PLAN 320
PART 2 PLAN 320



PART 1 PLAN 320
PART 2 PLAN 320

PART 3 PLAN 320

PART 4 PLAN 320

PART 5 PLAN 320

PART 6 PLAN 320

PART 7 PLAN 320

PART 8 PLAN 320

PART 9 PLAN 320

PART 10 PLAN 320

PART 11 PLAN 320

PART 12 PLAN 320

PART 13 PLAN 320

PART 14 PLAN 320

PART 15 PLAN 320

PART 16 PLAN 320

PART 17 PLAN 320

PART 18 PLAN 320

PART 19 PLAN 320

PART 20 PLAN 320

PART 21 PLAN 320

PART 22 PLAN 320

PART 23 PLAN 320

PART 24 PLAN 320

PART 25 PLAN 320

PART 26 PLAN 320

PART 27 PLAN 320

PART 28 PLAN 320

PART 29 PLAN 320

PART 30 PLAN 320

PART 31 PLAN 320