

**Manifest - Current Scenario**

- 40 x Barrel
- 4 x WD-101 construction ahead
- 2 x Flagger
- 2 x TC-21 TC-21
- 2 x TC-2B TC-2B
- 1 x TC-4L TC-4L

**TOMLINSON**  
FOUNDED ON STRENGTH GUIDED BY VISION

100 Citigate Drive, Ottawa ON, K2J 6K7  
Phone: (613) 822-1867  
Fax: (613) 822-6844

<b>Project:</b>	25 Pickering Placel
<b>Location:</b>	Close Pickering Avenue
<b>Job Number:</b>	24-TI004
<b>Client:</b>	Colonnade Bridgeport
<b>Author:</b>	Ryan Nussey
<b>Date:</b>	January 31, 2024
<b>MTO OTM #:</b>	See description below.

**Notes:**

- 1) This plan is to scale when printed on Ledger (11x17 paper).
- 2) All signs and traffic control devices to be installed as per OTM Book 7 April 2022.
- 3) Maximum distance between barrels to be 6 meters.
- 4) All sidewalk closures are to be reopened outside of work hours if possible.
- 5) All signage to be bilingual.
- 6) Pedestrians are to be temporarily diverted around the construction zone in areas without adjacent sidewalks

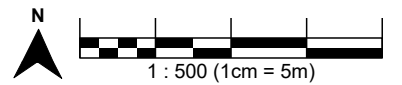


Table B Work Zone Component Dimensions: Long Duration Work (Non-freeways)

Dimension	Normal Posted Regulatory Speed Limit**			
	50 km/h or lower	60 km/h	70 km/h	80 km/h
1a) Taper length for full lane closure (m)	15 - 25 15 - 25 50	40 - 60	60 - 80	100 - 120
1b) Taper length for roadside work (m)	5 - 8 5 - 8 10	10 - 15	15 - 20	20 - 25
2) Longitudinal buffer area (LBA) (m)	300	140	50	60
3) Maximum distance between markers (m)	6 - 8	8 - 10	8 - 10	10 - 12
4) Minimum number of markers for taper	at least 5 markers	at least 7 markers	at least 9 markers	at least 13 markers
5) Minimum tangent between tapers (m)	95	100	120	140
6) Distance between construction signs (m)	40 - 50	80 - 100	110 - 120	130 - 145

This drawing was created by R.W. Tomlinson Limited. The installer is responsible for confirming all measurements between signs & channeling devices with Book 7 before implementation. Modifications to this drawing by anyone other than R.W. Tomlinson are not permitted.

**Legend**  
 Barrel  
 Safety Zone

REV	DATE	INITIAL	DESCRIPTION

Base stagePrint region 1



**Manifest - Current Scenario**

- 40 x Barrel
- 4 x WD-101 construction ahead
- 2 x Flagger
- 2 x TC-21 TC-21
- 2 x TC-2B TC-2B
- 1 x TC-4L TC-4L

**TOMLINSON**  
FOUNDED ON STRENGTH GUIDED BY VISION

100 Citigate Drive, Ottawa ON, K2J 6K7  
Phone: (613) 822-1867  
Fax: (613) 822-6844

<b>Project:</b>	25 Pickering Placel
<b>Location:</b>	Close Pickering Avenue
<b>Job Number:</b>	24-TI004
<b>Client:</b>	Colonnade Bridgeport
<b>Author:</b>	Ryan Nussey
<b>Date:</b>	January 31, 2024
<b>MTO OTM #:</b>	See description below.

**Notes:**

- 1) This plan is to scale when printed on Ledger (11x17 paper).
- 2) All signs and traffic control devices to be installed as per OTM Book 7 April 2022.
- 3) Maximum distance between barrels to be 6 meters.
- 4) All sidewalk closures are to be reopened outside of work hours if possible.
- 5) All signage to be bilingual.
- 6) Pedestrians are to be temporarily diverted around the construction zone in areas without adjacent sidewalks

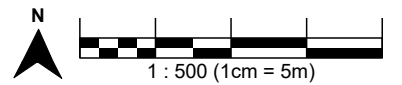


Table B Work Zone Component Dimensions: Long Duration Work (Non-freeways)

Dimension	Normal Posted Regulatory Speed Limit**			
	50 km/h or lower	60 km/h	70 km/h	80 km/h
1a) Taper length for full lane closure (m)****	LV: 15 - 25 HW: 20 - 50	40 - 60	60 - 80	100 - 120
1b) Taper length for roadside work (m)****	LV: 5 - 8 HW: 8 - 10	10 - 15	15 - 20	20 - 25
2) Longitudinal buffer area (LBA) (m)****	300	140	50	60
3) Maximum distance between markers (m)****	6 - 8	8 - 10	8 - 10	10 - 12
3) Minimum number of markers for taper	at least 5 markers	at least 7 markers	at least 9 markers	at least 13 markers
4) Minimum tangent between tapers (m)	95	100	120	140
5) Distance between construction signs (m)*****	40 - 50	80 - 100	110 - 120	130 - 140

This drawing was created by R.W. Tomlinson Limited. The installer is responsible for confirming all measurements between signs & channelling devices with Book 7 before implementation. Modifications to this drawing by anyone other than R.W. Tomlinson are not permitted.

**Legend**

- Barrel
- Safety Zone

REV	DATE	INITIAL	DESCRIPTION

Base stagePrint region 2

**Manifest - Current Scenario**

- 40 x Barrel
- 4 x WD-101 construction ahead
- 2 x Flagger
- 2 x TC-21 TC-21
- 2 x TC-2B TC-2B
- 1 x TC-4L TC-4L

<b>Project:</b>	25 Pickering Placel
<b>Location:</b>	Close Pickering Avenue
<b>Job Number:</b>	24-TI004
<b>Client:</b>	Colonnade Bridgeport
<b>Author:</b>	Ryan Nussey
<b>Date:</b>	January 31, 2024
<b>MTO OTM #:</b>	See description below.

**Notes:**

- 1) This plan is to scale when printed on Ledger (11x17 paper).
- 2) All signs and traffic control devices to be installed as per OTM Book 7 April 2022.
- 3) Maximum distance between barrels to be 6 meters.
- 4) All sidewalk closures are to be reopened outside of work hours if possible.
- 5) All signage to be bilingual.
- 6) Pedestrians are to be temporarily diverted around the construction zone in areas without adjacent sidewalks

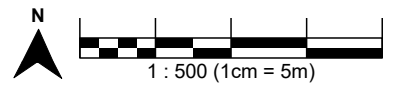


Table B Work Zone Component Dimensions: Long Duration Work (Non-freeways)

Dimension	Normal Posted Regulatory Speed Limit**				
	50 km/h or lower	60 km/h	70 km/h	80 km/h	90 km/h
1a) Taper length for full lane closure (m)****	LV: 15 - 25 HW: 20 - 50	40 - 60	60 - 90	100 - 120	140 - 160
1b) Taper length for roadside work (m)****	LV: 5 - 8 HW: 8 - 10	10 - 15	15 - 20	20 - 25	30 - 40
2) Longitudinal buffer area (LBA) (m)****	(30)	(40)	50	60	75
3) Maximum distance between markers (m)****	6 - 8	8 - 10	8 - 10	10 - 12	12 - 14
3) Minimum number of markers for taper	at least 5 markers	at least 7 markers	at least 9 markers	at least 11 markers	at least 13 markers
4) Minimum tangent between tapers (m)	95	100	120	140	160
5) Distance between construction signs (m)*****	40 - 50	80 - 100	110 - 120	130 - 140	150

This drawing was created by R.W. Tomlinson Limited. The installer is responsible for confirming all measurements between signs & channeling devices with Book 7 before implementation. Modifications to this drawing by anyone other than R.W. Tomlinson are not permitted.

**Legend**  
 Barrel  
 Safety Zone

REV	DATE	INITIAL	DESCRIPTION

Base stagePrint region 3



**Manifest - Current Scenario**

- 36 x Barrel
- 4 x WD-101 construction ahead
- 2 x Flagger
- 2 x TC-21 TC-21
- 2 x TC-2B TC-2B
- 1 x RB-11 no right turn
- 1 x RB-11-L no left turn
- 1 x TC-4L TC-4L



100 Citigate Drive, Ottawa ON, K2J 6K7  
 Phone: (613) 822-1867  
 Fax: (613) 822-6844

<b>Project:</b>	25 Pickering Placel
<b>Location:</b>	Close Pickering Avenue
<b>Job Number:</b>	24-TI004
<b>Client:</b>	Colonnade Bridgeport
<b>Author:</b>	Ryan Nussey
<b>Date:</b>	January 31, 2024
<b>MTO OTM #:</b>	See description below.

- Notes:**
- 1) This plan is to scale when printed on Ledger (11x17 paper).
  - 2) All signs and traffic control devices to be installed as per OTM Book 7 April 2022.
  - 3) Maximum distance between barrels to be 6 meters.
  - 4) All sidewalk closures are to be reopened outside of work hours if possible.
  - 5) All signage to be bilingual.
  - 6) Pedestrians are to be temporarily diverted around the construction zone in areas without adjacent sidewalks

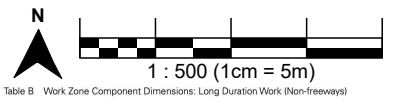
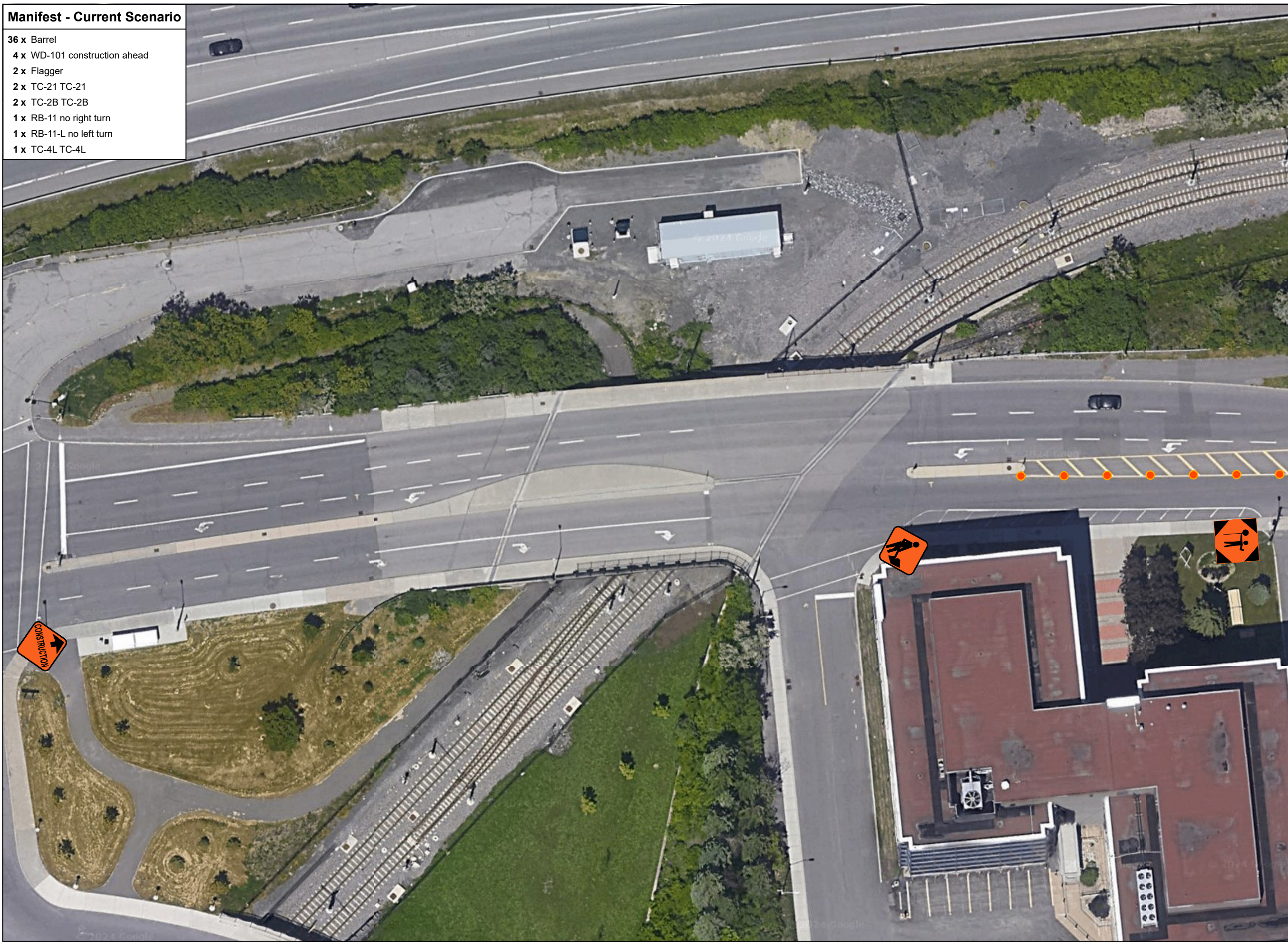


Table B Work Zone Component Dimensions: Long Duration Work (Non-freeways)

Dimension	Normal Posted Regulatory Speed Limit**			
	50 km/h or lower	60 km/h	70 km/h	80 km/h
1a) Taper length for full lane closure (m)	15 - 25 15 - 25 50	40 - 60	60 - 80	100 - 120
1b) Taper length for roadside work (m)	5 - 8 10 - 15 15 - 20	10 - 15	15 - 20	20 - 25
2) Longitudinal buffer area (LBA) (m)	300	140	50	60
3) Maximum distance between markers (m)	6 - 8	8 - 10	8 - 10	10 - 12
3) Minimum number of markers for taper	at least 5 markers	at least 7 markers	at least 9 markers	at least 13 markers
4) Minimum tangent between tapers (m)	95	100	120	140
5) Distance between construction signs (m)	40 - 50	80 - 100	110 - 120	130 - 145

**Legend**

- Barrel
- Safety Zone



REV	DATE	INITIAL	DESCRIPTION

Base stagePrint region 1

**Manifest - Current Scenario**

- 36 x Barrel
- 4 x WD-101 construction ahead
- 2 x Flagger
- 2 x TC-21 TC-21
- 2 x TC-2B TC-2B
- 1 x RB-11 no right turn
- 1 x RB-11-L no left turn
- 1 x TC-4L TC-4L



100 Citigate Drive, Ottawa ON, K2J 6K7  
 Phone: (613) 822-1867  
 Fax: (613) 822-6844

<b>Project:</b>	25 Pickering Placel
<b>Location:</b>	Close Pickering Avenue
<b>Job Number:</b>	24-TI004
<b>Client:</b>	Colonnade Bridgeport
<b>Author:</b>	Ryan Nussey
<b>Date:</b>	January 31, 2024
<b>MTO OTM #:</b>	See description below.

**Notes:**

- 1) This plan is to scale when printed on Ledger (11x17 paper).
- 2) All signs and traffic control devices to be installed as per OTM Book 7 April 2022.
- 3) Maximum distance between barrels to be 6 meters.
- 4) All sidewalk closures are to be reopened outside of work hours if possible.
- 5) All signage to be bilingual.
- 6) Pedestrians are to be temporarily diverted around the construction zone in areas without adjacent sidewalks



Table B Work Zone Component Dimensions: Long Duration Work (Non-freeways)

Dimension	Normal Posted Regulatory Speed Limit**			
	50 km/h or lower	60 km/h	70 km/h	80 km/h
1a) Taper length for full lane closure (m)****	LV: 15 - 25 HW: 20 - 50	40 - 60	60 - 80	100 - 120
1b) Taper length for roadside work (m)****	LV: 5 - 8 HW: 8 - 10	10 - 15	15 - 20	20 - 25
2) Longitudinal buffer area (LBA) (m)****	(30)	(40)	50	60
3) Maximum distance between markers (m)****	6 - 8	8 - 10	8 - 10	10 - 12
3) Minimum number of markers for taper	at least 5 markers	at least 7 markers	at least 9 markers	at least 13 markers
4) Minimum tangent between tapers (m)	95	100	120	140
5) Distance between construction signs (m)*****	40 - 50	80 - 100	110 - 120	130 - 140

This drawing was created by R.W. Tomlinson Limited. The installer is responsible for confirming all measurements between signs & channelling devices with Book 7 before implementation. Modifications to this drawing by anyone other than R.W. Tomlinson are not permitted.

**Legend**  
 Barrel  
 Safety Zone

REV	DATE	INITIAL	DESCRIPTION

Base stagePrint region 2

**Manifest - Current Scenario**

- 36 x Barrel
- 4 x WD-101 construction ahead
- 2 x Flagger
- 2 x TC-21 TC-21
- 2 x TC-2B TC-2B
- 1 x RB-11 no right turn
- 1 x RB-11-L no left turn
- 1 x TC-4L TC-4L

**TOMLINSON**  
FOUNDED ON STRENGTH GUIDED BY VISION

100 Citigate Drive, Ottawa ON, K2J 6K7  
Phone: (613) 822-1867  
Fax: (613) 822-6844

<b>Project:</b>	25 Pickering Placel
<b>Location:</b>	Close Pickering Avenue
<b>Job Number:</b>	24-TI004
<b>Client:</b>	Colonnade Bridgeport
<b>Author:</b>	Ryan Nussey
<b>Date:</b>	January 31, 2024
<b>MTO OTM #:</b>	See description below.

**Notes:**

- 1) This plan is to scale when printed on Ledger (11x17 paper).
- 2) All signs and traffic control devices to be installed as per OTM Book 7 April 2022.
- 3) Maximum distance between barrels to be 6 meters.
- 4) All sidewalk closures are to be reopened outside of work hours if possible.
- 5) All signage to be bilingual.
- 6) Pedestrians are to be temporarily diverted around the construction zone in areas without adjacent sidewalks

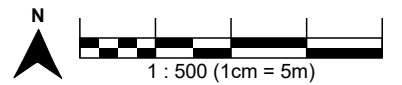


Table B Work Zone Component Dimensions: Long Duration Work (Non-freeways)

Dimension	Normal Posted Regulatory Speed Limit**				
	50 km/h or lower	60 km/h	70 km/h	80 km/h	90 km/h
1a) Taper length for full lane closure (m)****	LV: 15 - 25 HW: 20 - 50	40 - 60	60 - 90	100 - 120	140 - 160
1b) Taper length for roadside work (m)****	LV: 5 - 8 HW: 8 - 10	10 - 15	15 - 20	20 - 25	30 - 40
2) Longitudinal buffer area (LBA) (m)****	(30)	(40)	50	60	75
3) Maximum distance between markers (m)****	6 - 8	8 - 10	8 - 10	10 - 12	12 - 14
3) Minimum number of markers for taper	at least 5 markers	at least 7 markers	at least 9 markers	at least 11 markers	at least 13 markers
4) Minimum tangent between tapers (m)	95	100	120	140	160
5) Distance between construction signs (m)*****	40 - 50	80 - 100	110 - 120	130 - 140	150

This drawing was created by R.W. Tomlinson Limited. The installer is responsible for confirming all measurements between signs & channeling devices with Book 7 before implementation. Modifications to this drawing by anyone other than R.W. Tomlinson are not permitted.

**Legend**

- Barrel
- Safety Zone

REV	DATE	INITIAL	DESCRIPTION

Base stagePrint region 3



**Manifest - Current Scenario**

- 49 x Barrel
- 4 x WD-101 construction ahead
- 2 x TC-2B TC-2B
- 1 x RB-11 no right turn
- 1 x RB-11-L no left turn
- 1 x TC-4L TC-4L
- 1 x WD-1162 Road closed

**TOMLINSON**  
FOUNDED ON STRENGTH GUIDED BY VISION

100 Citigate Drive, Ottawa ON, K2J 6K7  
Phone: (613) 822-1867  
Fax: (613) 822-6844

<b>Project:</b>	25 Pickering Placel
<b>Location:</b>	Close Pickering Avenue
<b>Job Number:</b>	24-TI004
<b>Client:</b>	Colonnade Bridgeport
<b>Author:</b>	Ryan Nussey
<b>Date:</b>	January 31, 2024
<b>MTO OTM #:</b>	See description below.

**Notes:**

- 1) This plan is to scale when printed on Ledger (11x17 paper).
- 2) All signs and traffic control devices to be installed as per OTM Book 7 April 2022.
- 3) Maximum distance between barrels to be 6 meters.
- 4) All sidewalk closures are to be reopened outside of work hours if possible.
- 5) All signage to be bilingual.
- 6) Pedestrians are to be temporarily diverted around the construction zone in areas without adjacent sidewalks

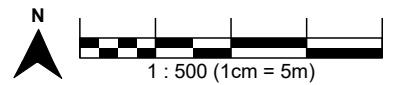


Table B Work Zone Component Dimensions: Long Duration Work (Non-freeways)

Dimension	Normal Posted Regulatory Speed Limit**			
	50 km/h or lower	60 km/h	70 km/h	80 km/h
1a) Taper length for full lane closure (m)	15 - 25 15 - 25 50	40 - 60	60 - 80	100 - 120
1b) Taper length for roadside work (m)	15 - 25 15 - 25 50	40 - 60	60 - 80	100 - 120
2) Longitudinal buffer area (LBA) (m)	30	40	50	60
3) Maximum distance between markers (m)	6 - 8	8 - 10	8 - 10	10 - 12
4) Minimum number of markers for taper	at least 5 markers	at least 7 markers	at least 9 markers	at least 13 markers
5) Minimum tangent between tapers (m)	95	100	120	140
6) Distance between construction signs (m)	40 - 50	80 - 100	110 - 120	130 - 140

This drawing was created by R.W. Tomlinson Limited. The installer is responsible for confirming all measurements between signs & channelling devices with Book 7 before implementation. Modifications to this drawing by anyone other than R.W. Tomlinson are not permitted.

**Legend**  
 Barrel  
 Safety Zone

REV	DATE	INITIAL	DESCRIPTION

Base stagePrint region 1



**Manifest - Current Scenario**

- 49 x Barrel
- 4 x WD-101 construction ahead
- 2 x TC-2B TC-2B
- 1 x RB-11 no right turn
- 1 x RB-11-L no left turn
- 1 x TC-4L TC-4L
- 1 x WD-1162 Road closed

**TOMLINSON**  
FOUNDED ON STRENGTH GUIDED BY VISION

100 Citigate Drive, Ottawa ON, K2J 6K7  
Phone: (613) 822-1867  
Fax: (613) 822-6844

<b>Project:</b>	25 Pickering Placel
<b>Location:</b>	Close Pickering Avenue
<b>Job Number:</b>	24-TI004
<b>Client:</b>	Colonnade Bridgeport
<b>Author:</b>	Ryan Nussey
<b>Date:</b>	January 31, 2024
<b>MTO OTM #:</b>	See description below.

**Notes:**

- 1) This plan is to scale when printed on Ledger (11x17 paper).
- 2) All signs and traffic control devices to be installed as per OTM Book 7 April 2022.
- 3) Maximum distance between barrels to be 6 meters.
- 4) All sidewalk closures are to be reopened outside of work hours if possible.
- 5) All signage to be bilingual.
- 6) Pedestrians are to be temporarily diverted around the construction zone in areas without adjacent sidewalks



Table B Work Zone Component Dimensions: Long Duration Work (Non-freeways)

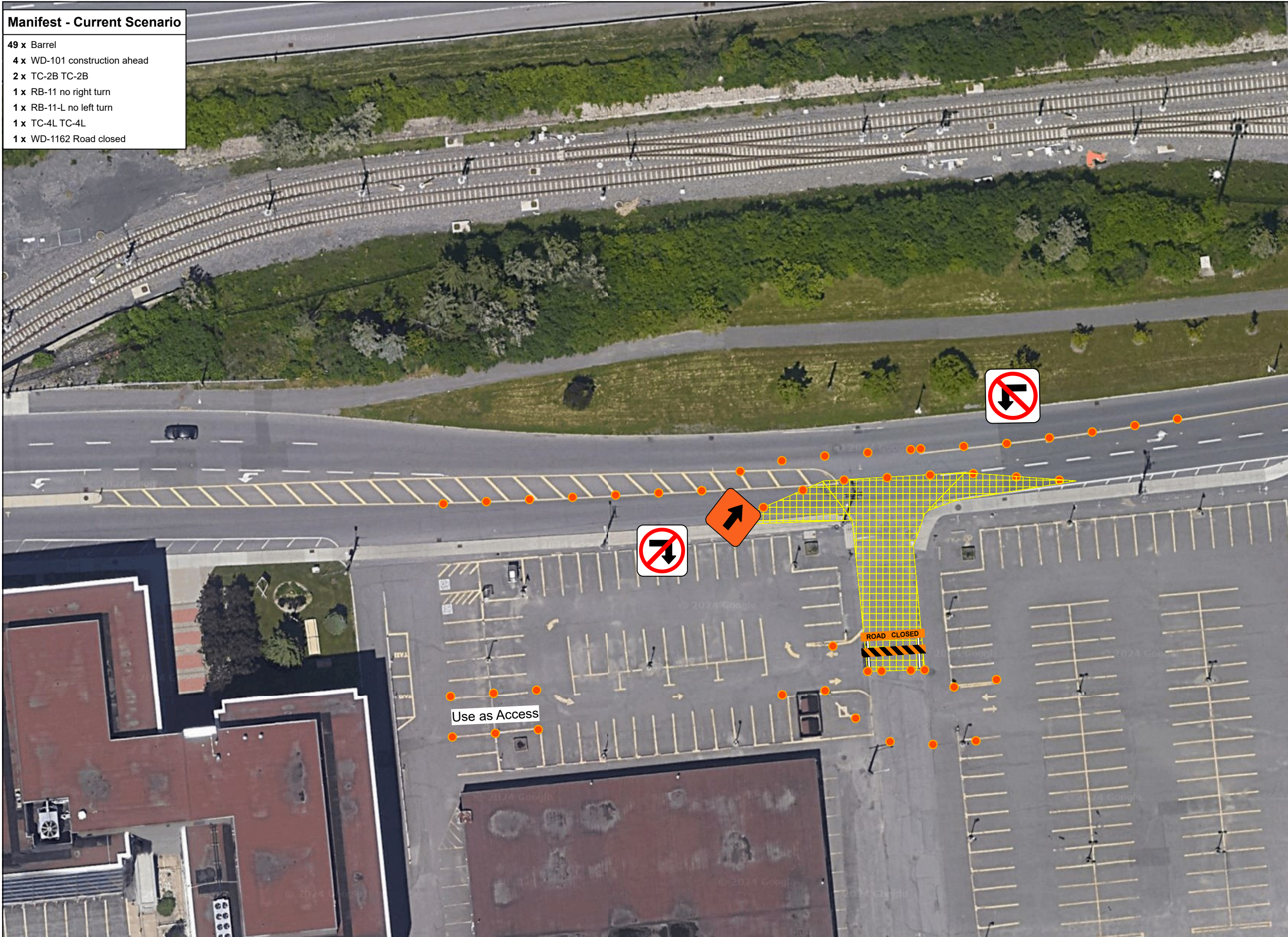
Dimension	Normal Posted Regulatory Speed Limit**			
	50 km/h or lower	60 km/h	70 km/h	80 km/h
1a) Taper length for full lane closure (m)****	LV: 15 - 25 HW: 20 - 50	40 - 60	60 - 80	100 - 120
1b) Taper length for roadside work (m)****	LV: 5 - 8 HW: 8 - 10	10 - 15	15 - 20	20 - 25
2) Longitudinal buffer area (LBA) (m)*****	300	140	50	60
3) Maximum distance between markers (m)*****	6 - 8	8 - 10	8 - 10	10 - 12
4) Minimum number of markers for taper	at least 5 markers	at least 7 markers	at least 9 markers	at least 13 markers
5) Minimum tangent between tapers (m)	95	100	120	140
6) Distance between construction signs (m)*****	40 - 50	80 - 100	110 - 120	130 - 145

This drawing was created by R.W. Tomlinson Limited. The installer is responsible for confirming all measurements between signs & channelling devices with Book 7 before implementation. Modifications to this drawing by anyone other than R.W. Tomlinson are not permitted.

**Legend**  
 Barrel  
 Safety Zone

REV	DATE	INITIAL	DESCRIPTION

Base stagePrint region 2





**Manifest - Current Scenario**

- 49 x Barrel
- 4 x WD-101 construction ahead
- 2 x TC-2B TC-2B
- 1 x RB-11 no right turn
- 1 x RB-11-L no left turn
- 1 x TC-4L TC-4L
- 1 x WD-1162 Road closed



100 Citigate Drive, Ottawa ON, K2J 6K7  
 Phone: (613) 822-1867  
 Fax: (613) 822-6844

<b>Project:</b>	25 Pickering Placel
<b>Location:</b>	Close Pickering Avenue
<b>Job Number:</b>	24-TI004
<b>Client:</b>	Colonnade Bridgeport
<b>Author:</b>	Ryan Nussey
<b>Date:</b>	January 31, 2024
<b>MTO OTM #:</b>	See description below.

- Notes:**
- 1) This plan is to scale when printed on Ledger (11x17 paper).
  - 2) All signs and traffic control devices to be installed as per OTM Book 7 April 2022.
  - 3) Maximum distance between barrels to be 6 meters.
  - 4) All sidewalk closures are to be reopened outside of work hours if possible.
  - 5) All signage to be bilingual.
  - 6) Pedestrians are to be temporarily diverted around the construction zone in areas without adjacent sidewalks

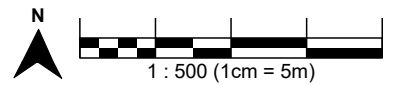


Table B Work Zone Component Dimensions: Long Duration Work (Non-freeways)

Dimension	Normal Posted Regulatory Speed Limit**				
	50 km/h or lower	60 km/h	70 km/h	80 km/h	90 km/h
1a) Taper length for full lane closure (m)	LV: 15 - 25 HW: 20 - 50	40 - 60	60 - 90	100 - 120	140 - 160
1b) Taper length for roadside work (m)	LV: 5 - 8 HW: 8 - 10	10 - 15	15 - 20	20 - 25	30 - 40
2) Longitudinal buffer area (LBA) (m)	300	140	50	60	75
3) Maximum distance between markers (m)	6 - 8	8 - 10	8 - 10	10 - 12	12 - 14
3) Minimum number of markers for taper	at least 5 markers	at least 7 markers	at least 9 markers	at least 11 markers	at least 13 markers
4) Minimum tangent between tapers (m)	95	100	120	140	160
5) Distance between construction signs (m)	40 - 50	80 - 100	110 - 120	130 - 140	150

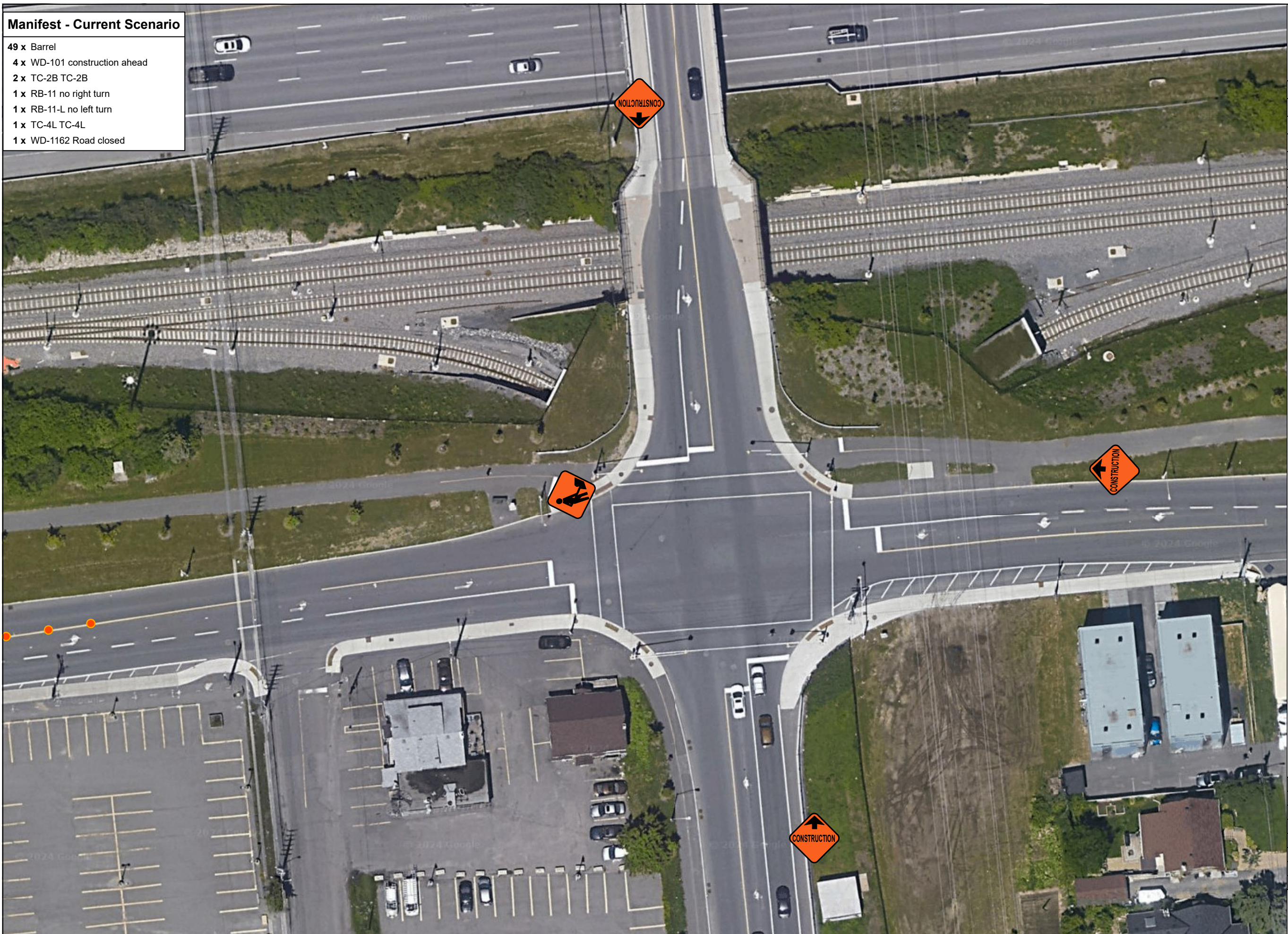
This drawing was created by R.W. Tomlinson Limited. The installer is responsible for confirming all measurements between signs & channeling devices with Book 7 before implementation. Modifications to this drawing by anyone other than R.W. Tomlinson are not permitted.

**Legend**

- Barrel
- Safety Zone

REV	DATE	INITIAL	DESCRIPTION

Base stagePrint region 3



**Manifest - Current Scenario**

13 x Barrel

<b>Project:</b>	25 Pickering Placel
<b>Location:</b>	Close Pickering Avenue
<b>Job Number:</b>	24-TI004
<b>Client:</b>	Colonnade Bridgeport
<b>Author:</b>	Ryan Nussey
<b>Date:</b>	January 31, 2024
<b>MTO OTM #:</b>	See description below.

- Notes:**
- 1) This plan is to scale when printed on Ledger (11x17 paper).
  - 2) All signs and traffic control devices to be installed as per OTM Book 7 April 2022.
  - 3) Maximum distance between barrels to be 6 meters.
  - 4) All sidewalk closures are to be reopened outside of work hours if possible.
  - 5) All signage to be bilingual.
  - 6) Pedestrians are to be temporarily diverted around the construction zone in areas without adjacent sidewalks

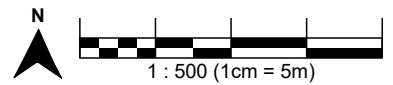
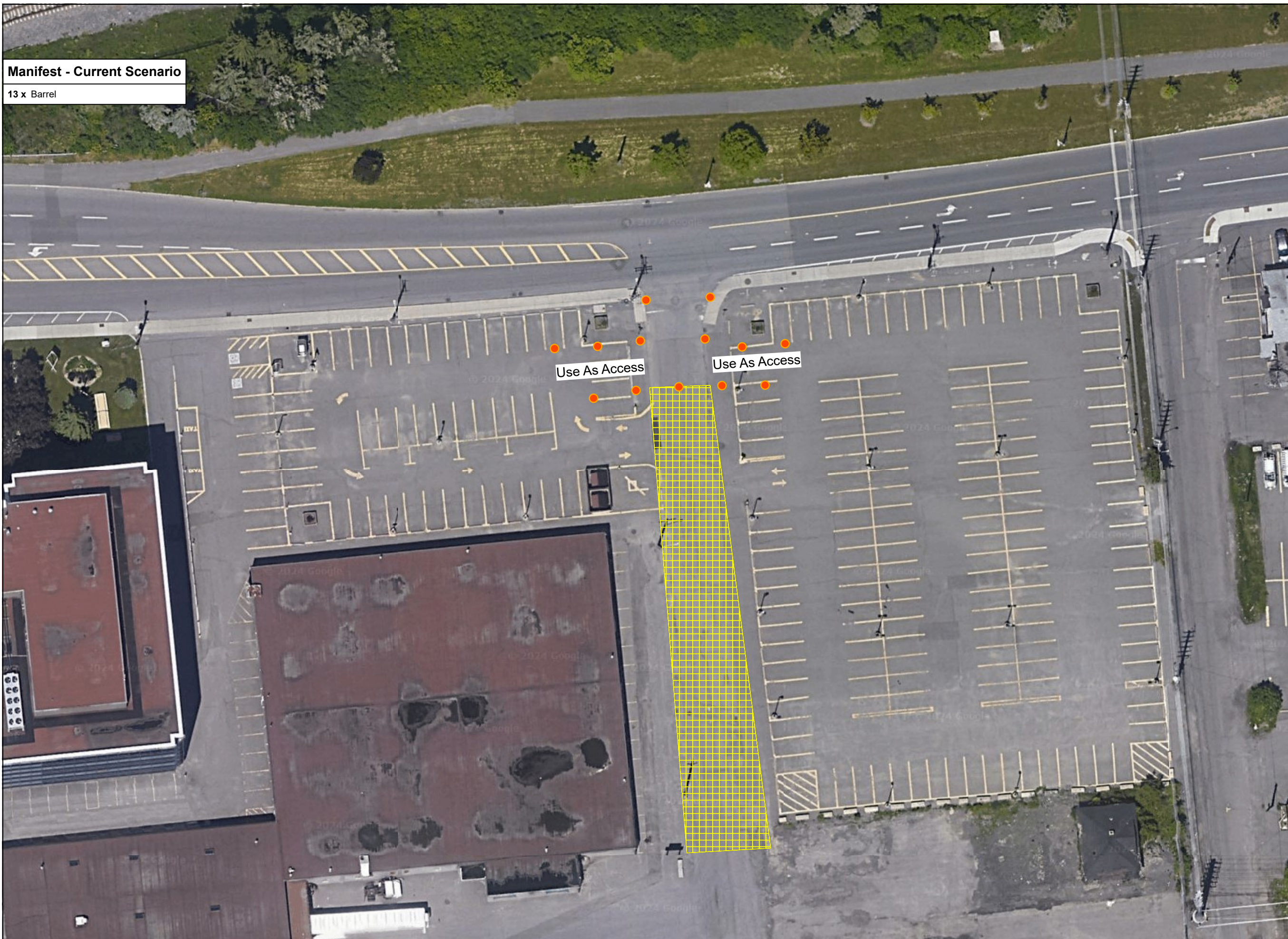


Table B Work Zone Component Dimensions: Long Duration Work (Non-freeways)

Dimension	Normal Posted Regulatory Speed Limit**			
	50 km/h or lower	60 km/h	70 km/h	80 km/h
1a) Taper length for full lane closure (m)****	15 - 25	40 - 60	60 - 80	100 - 120
1b) Taper length for roadside work (m)****	10 - 15	15 - 20	20 - 25	30 - 40
2) Longitudinal buffer area (LBA) (m)****	300	140	50	60
3) Maximum distance between markers (m)****	6 - 8	8 - 10	8 - 10	10 - 12
3) Minimum number of markers for taper	at least 5 markers	at least 7 markers	at least 9 markers	at least 13 markers
4) Minimum tangent between tapers (m)	95	100	120	140
5) Distance between construction signs (m)*****	40 - 50	80 - 100	110 - 120	130 - 140

This drawing was created by R.W. Tomlinson Limited. The installer is responsible for confirming all measurements between signs & channelling devices with Book 7 before implementation. Modifications to this drawing by anyone other than R.W. Tomlinson are not permitted.

**Legend**

- Orange circle: Barrel
- Yellow grid: Safety Zone

REV	DATE	INITIAL	DESCRIPTION

Base stagePrint region 1