

GENERAL NOTES:

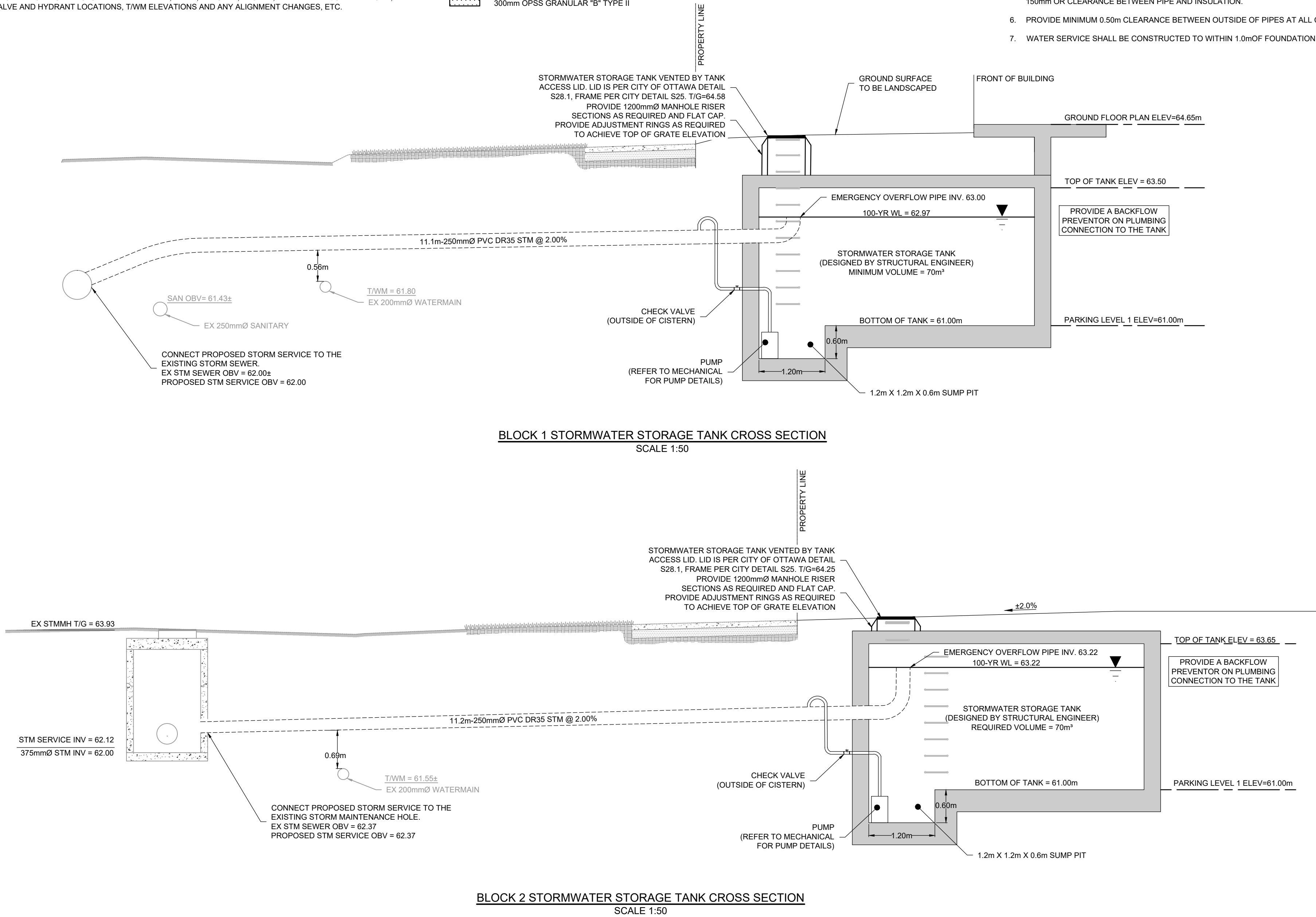
- DIMENSIONS AND LAYOUT INFORMATION SHALL BE CONFIRMED PRIOR TO COMMENCEMENT OF CONSTRUCTION.
- THE ORIGINAL TOPOGRAPHY AND GROUND ELEVATIONS, SERVICING AND SURVEY INFORMATION SHOWN ARE SUPPLIED FOR INFORMATION PURPOSES ONLY. IT SHALL BE THE RESPONSIBILITY OF THE CONTRACTOR TO VERIFY THE ACCURACY OF ALL INFORMATION OBTAINED FROM THIS PLAN.
- CO-ORDINATE AND SCHEDULE ALL WORK WITH OTHER TRADES AND CONTRACTORS.
- DETERMINE THE EXACT LOCATION, SIZE, MATERIAL AND ELEVATION OF ALL EXISTING UTILITIES PRIOR TO COMMENCING CONSTRUCTION. PROTECT AND ASSUME RESPONSIBILITY FOR ALL EXISTING UTILITIES WHETHER OR NOT SHOWN ON THESE DRAWINGS.
- OBTAIN ALL NECESSARY PERMITS AND APPROVALS FROM THE CITY OF OTTAWA BEFORE COMMENCING CONSTRUCTION.
- BEFORE COMMENCING CONSTRUCTION OBTAIN AND PROVIDE PROOF OF COMPREHENSIVE, ALL RISK AND OPERATIONAL LIABILITY INSURANCE FOR \$5,000,000.00. INSURANCE POLICY TO NAME OWNERS, ENGINEERS AND ARCHITECTS AS CO-INSURED.
- CONNECT TO EXISTING SYSTEMS AS DETAILED, INCLUDING ALL RESTORATION WORK NECESSARY TO REINSTATE SURFACES TO EXISTING CONDITIONS OR BETTER.
- RESTORE ALL TRENCHES AND SURFACE FEATURES TO EXISTING CONDITIONS OR BETTER AND TO THE SATISFACTION OF MUNICIPAL AUTHORITIES.
- ASPHALT RESTORATION SHALL BE IN ACCORDANCE WITH CITY OF OTTAWA DETAIL R-10. THICKNESS OF GRANULAR MATERIAL AND ASPHALT LAYERS TO MATCH EXISTING. BOULEVARDS SHALL BE REINSTATED WITH 100mm OF TOPSOIL, SEED AND MULCH.
- REMOVE FROM SITE ALL EXCESS EXCAVATED MATERIAL, ORGANIC MATERIAL AND DEBRIS UNLESS OTHERWISE INSTRUCTED BY ENGINEER. EXCAVATE AND REMOVE FROM SITE ANY CONTAMINATED MATERIAL. ALL CONTAMINATED MATERIAL SHALL BE DISPOSED OF AT A LICENSED LANDFILL FACILITY.
- ALL ELEVATIONS ARE GEODETIC AND UTILIZE METRIC UNITS.
- ALL FENCING TO BE LOCATED 0.15m INSIDE PROPERTY LINE. REFER TO LANDSCAPING PLAN FOR DETAILS.
- PERFORATED PIPE SUB-DRAINS TO BE PROVIDED AT SUBGRADE LEVEL EXTENDING FROM THE ROADSIDE CATCHBASIN FOR A DISTANCE OF 3.0m, PARALLEL TO THE CURB IN TWO DIRECTIONS.
- REFER TO GEOTECHNICAL REPORT (File 267991.001, DATED MARCH 2, 2020), PREPARED BY PINCHIN FOR SUBSURFACE SOIL AND GROUNDWATER CONDITIONS, CONSTRUCTION RECOMMENDATIONS, AND GEOTECHNICAL INSPECTION REQUIREMENTS. THE GEOTECHNICAL CONSULTANT IS TO REVIEW ON-SITE CONDITIONS AFTER EXCAVATION PRIOR TO PLACEMENT OF THE GRANULAR MATERIAL.
- REFER TO THE STORMWATER MANAGEMENT REPORT No. R-2024-090 DATED MAY 15, 2025 PREPARED BY NOVATECH.
- SAW CUT AND KEY GRIND ASPHALT AT ALL ROAD CUTS AND ASPHALT TIE IN POINTS AS PER CITY OF OTTAWA STANDARDS (R10).
- CONTRACTOR TO PROVIDE THE CONSULTANT WITH A GENERAL PLAN OF SERVICES INDICATING ALL SERVICING AS-BUILT INFORMATION. AS-BUILT INFORMATION MUST INCLUDE: PIPE MATERIAL, SIZES, LENGTHS, SLOPES, INVERT AND T/G ELEVATIONS, STRUCTURE LOCATIONS, VALVE AND HYDRANT LOCATIONS, T/W/M ELEVATIONS AND ANY ALIGNMENT CHANGES, ETC.

GRADING AND PAVEMENT NOTES:

- ALL TOPSOIL, ORGANIC OR DELETERIOUS MATERIAL MUST BE ENTIRELY REMOVED FROM BENEATH THE PROPOSED HARD SURFACE (ie. PAVEMENT, CURB, SIDEWALK, ETC.) AREAS AS DIRECTED BY THE SITE ENGINEER OR GEOTECHNICAL ENGINEER.
- EXPOSED SUBGRADES IN PROPOSED PAVED AREAS SHOULD BE HEAVILY PROOF ROLLED WITH A LARGE (10 TON) VIBRATORY STEEL DRUM ROLLER UNDER DRY CONDITIONS AND INSPECTED BY THE GEOTECHNICAL ENGINEER PRIOR TO THE PLACEMENT OF GRANULARS.
- ANY SOFT AREAS EVIDENT FROM THE PROOF ROLLING SHOULD BE SUB-EXCAVATED AND REPLACED WITH SUITABLE MATERIAL THAT IS FROST COMPATIBLE WITH THE EXISTING SOILS AS RECOMMENDED BY THE GEOTECHNICAL ENGINEER.
- THE GRANULAR BASE SHOULD BE PLACED IN MAXIMUM 300mm LIFTS AND COMPACTED TO AT LEAST 100% OF THE STANDARD PROCTOR MAXIMUM DRY DENSITY VALUE. ANY ADDITIONAL GRANULAR FILL USED BELOW THE PROPOSED PAVEMENT SHOULD BE PLACED IN MAXIMUM 300mm LIFTS AND COMPACTED TO AT LEAST 95% OF THE STANDARD PROCTOR MAXIMUM DRY DENSITY VALUE.
- GRADE AND/OR FILL BETWEEN BUILDINGS AND CURBS, WHERE REQUIRED, TO PROVIDE POSITIVE DRAINAGE.
- MINIMUM OF 2% GRADE FOR ALL GRASS AREAS UNLESS OTHERWISE NOTED.
- MAXIMUM TERRACING GRADE TO BE 3:1 UNLESS OTHERWISE NOTED.
- ALL GRADES BY CURBS ARE EDGE OF PAVEMENT GRADES UNLESS OTHERWISE INDICATED.
- ALL CURBS SHALL BE BARRIER CURB, UNLESS OTHERWISE NOTED, AND CONSTRUCTED PER CITY OF OTTAWA STANDARD (SC1.1).
- REFER TO LANDSCAPE PLAN FOR PLANTING AND OTHER LANDSCAPE FEATURE DETAILS.
- CONTRACTOR TO PROVIDE THE CONSULTANT WITH A GRADING PLAN INDICATING AS-BUILT ELEVATIONS OF ALL DESIGN GRADES SHOWN ON THE PLAN.

PAVEMENT STRUCTURE:

LIGHT DUTY PAVEMENT
50mm HL3 OR SP 12.5
150mm OPSS GRANULAR "A"
300mm OPSS GRANULAR "B" TYPE II



EROSION AND SEDIMENT CONTROL NOTES:

- THE CONTRACTOR SHALL IMPLEMENT BEST MANAGEMENT PRACTICES, TO PROVIDE FOR PROTECTION OF THE AREA DRAINAGE SYSTEM AND THE RECEIVING WATERCOURSE, DURING CONSTRUCTION ACTIVITIES. THE CONTRACTOR ACKNOWLEDGES THAT FAILURE TO IMPLEMENT APPROPRIATE EROSION AND SEDIMENT CONTROL MEASURES MAY BE SUBJECT TO PENALTIES IMPOSED BY ANY APPLICABLE REGULATORY AGENCY.
- THE OWNER AGREES TO PREPARE AND IMPLEMENT AN EROSION AND SEDIMENT CONTROL PLAN TO THE SATISFACTION OF THE CITY OF OTTAWA, APPROPRIATE TO THE SITE CONDITIONS, PRIOR TO UNDERTAKING ANY SITE ALTERATIONS (FILLING, GRADING, REMOVAL OF VEGETATION, ETC.) AND DURING ALL PHASES OF SITE PREPARATION AND CONSTRUCTION IN ACCORDANCE WITH THE CURRENT BEST MANAGEMENT PRACTICES FOR EROSION AND SEDIMENT CONTROL SUCH AS BUT NOT LIMITED TO INSTALLING FILTER CLOTHS ACROSS MANHOLE/CATCHBASIN LIDS TO PREVENT SEDIMENTS FROM ENTERING STRUCTURES AND INSTALL AND MAINTAIN A LIGHT DUTY SILT FENCE BARRIER AS REQUIRED.
 - THE CONTRACTOR SHALL PLACE FILTER BAGS UNDER THE CATCHBASIN AND MANHOLE GRATES FOR THE DURATION OF CONSTRUCTION AND WILL REMAIN IN PLACE DURING ALL PHASES OF CONSTRUCTION.
 - SILT FENCING FOR ENTIRE PERIMETER OF SITE, SHALL BE UTILIZED TO CONTROL EROSION FROM THE SITE DURING CONSTRUCTION.
 - THE CONTRACTOR ACKNOWLEDGES THAT FAILURE TO IMPLEMENT EROSION AND SEDIMENT CONTROL MEASURES MAY BE SUBJECT TO PENALTIES IMPOSED BY ANY APPLICABLE REGULATORY AGENCY.
 - PROVIDE MUD MATS AT ALL CONSTRUCTION ACCESS POINTS TO MINIMIZE SEDIMENT TRANSPORT OFFSITE.
 - EROSION AND SEDIMENT CONTROL MEASURES MAY BE MODIFIED IN THE FIELD AT THE DISCRETION OF THE CITY OF OTTAWA SITE INSPECTOR OR CONSERVATION AUTHORITY.

WATERMAIN NOTES:

- GENERAL:

ITEM	DETAIL No.	REFERENCE
WATERMAIN TRENCHING	W17	CITY OF OTTAWA
THERMAL INSULATION IN SHALLOW TRENCHES	W22	CITY OF OTTAWA
WATERMAIN CROSSING BELOW SEWER / OVER SEWER	W25 / W25.2	CITY OF OTTAWA
WATERMAIN	PVC DR18	CITY OF OTTAWA
VALVE BOX	W24	CITY OF OTTAWA
- THE WATERMAIN SHALL BE PVC DR 18 IN ACCORDANCE WITH MATERIAL SPECIFICATION MW-18.1, UNLESS OTHERWISE INDICATED.
- SUPPLY AND CONSTRUCT ALL WATERMAINS AND APPURTENANCES IN ACCORDANCE WITH THE CITY OF OTTAWA STANDARDS AND SPECIFICATIONS. EXCAVATION, INSTALLATION, BACKFILL AND RESTORATION OF ALL WATERMAINS BY THE CONTRACTOR. CONNECTIONS AND SHUT-OFFS AT THE MAIN AND CHLORINATION OF THE WATER SYSTEM SHALL BE PERFORMED BY CITY OFFICIALS.
- WATERMAIN SHALL BE MINIMUM 2.4m DEPTH BELOW GRADE UNLESS OTHERWISE INDICATED.
- INSULATE ALL WATERMAIN / WATER SERVICES THAT HAVE LESS THAN 2.4m OF COVER PER CITY OF OTTAWA DETAIL W22, PROVIDE 150mm OR CLEARANCE BETWEEN PIPE AND INSULATION.
- PROVIDE MINIMUM 0.50m CLEARANCE BETWEEN OUTSIDE OF PIPES AT ALL CROSSINGS.
- WATER SERVICE SHALL BE CONSTRUCTED TO WITHIN 1.0m OF FOUNDATION WALL AND CAPPED, UNLESS OTHERWISE INDICATED.

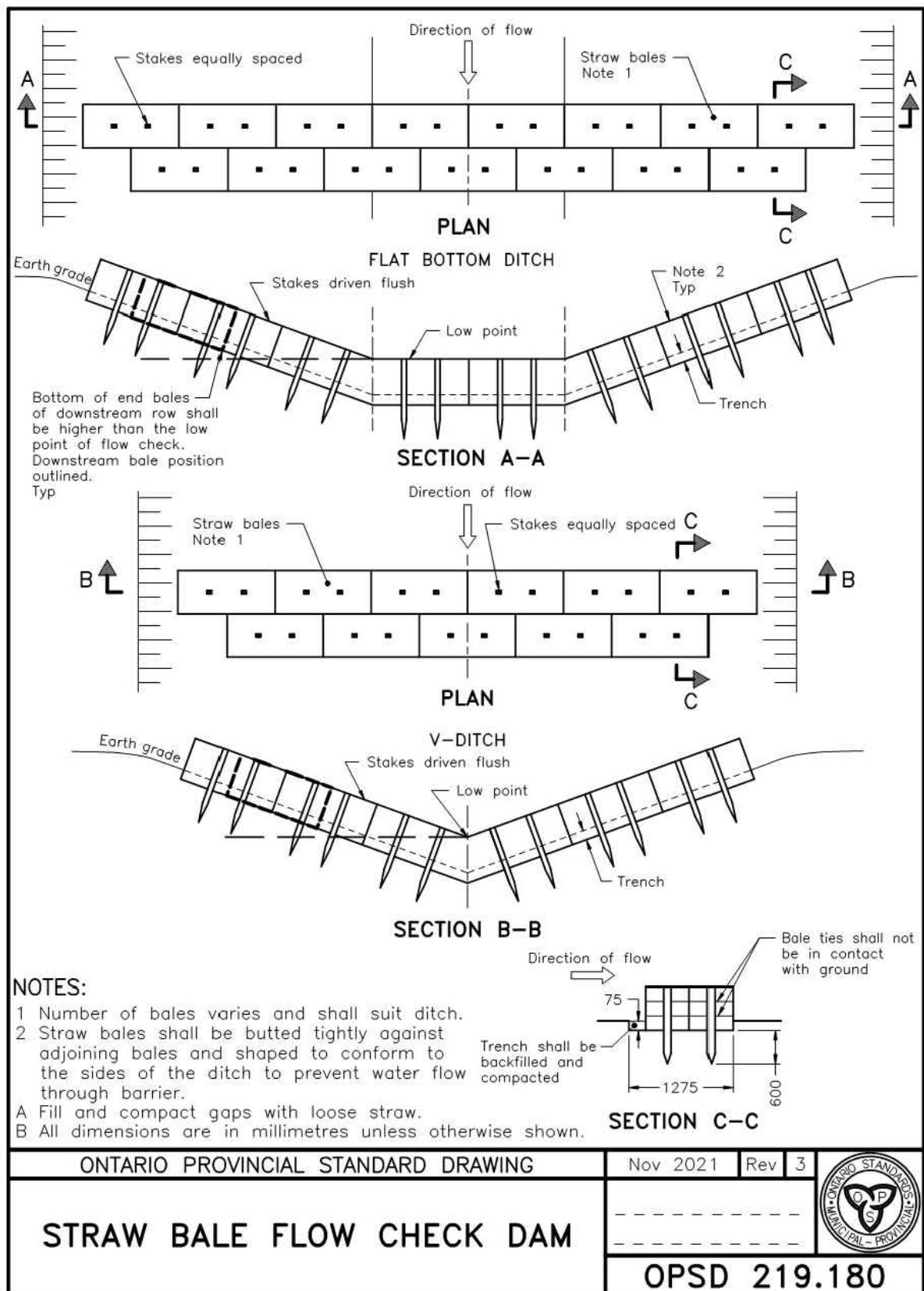
SEWER NOTES:

- SPECIFICATIONS:

ITEM	SPEC. No.	REFERENCE
CATCHBASIN (600x600mm)	705.010	OPSD
STORM / SANITARY MANHOLE (1200Ø)	701.010	OPSD
STORM/SANITARY MH FRAME	S25	CITY OF OTTAWA
SANITARY COVER	S24	CITY OF OTTAWA
STORM COVER (CLOSED)	S24.1	CITY OF OTTAWA
STORM COVER (OPEN)	S28.1	CITY OF OTTAWA
STORM SEWER < 450mmØ	PVC DR 35/(UNLESS SPECIFIED OTHERWISE)	CITY OF OTTAWA
STORM SEWER >= 450mmØ	CONC 650/(UNLESS SPECIFIED OTHERWISE)	CITY OF OTTAWA
SANITARY SEWER	PVC DR 35	CITY OF OTTAWA
- INSULATE ALL PIPES (SAN/STM) THAT HAVE LESS THAN 2.0m COVER PER CITY OF OTTAWA DETAIL S35. PROVIDE 150mm CLEARANCE BETWEEN PIPE AND INSULATION.
- SERVICES ARE TO BE CONSTRUCTED TO PROPERTY LINE AT MINIMUM SLOPE OF 1.0% (2.0% IS PREFERRED).
- PIPE BEDDING, COVER AND BACKFILL ARE TO BE COMPACTED TO AT LEAST 95% OF THE STANDARD PROCTOR MAXIMUM DRY DENSITY. THE USE OF CLEAR CRUSHED STONE AS A BEDDING LAYER SHALL NOT BE PERMITTED.
- SEWER SERVICE CONNECTIONS PER CITY OF OTTAWA DETAILS S11 AND S11.1.
- FLEXIBLE CONNECTIONS ARE REQUIRED FOR CONNECTING PIPES TO MANHOLES (FOR EXAMPLE KOR-N-SEAL, PSX: POSITIVE SEAL AND DURASEAL). THE CONCRETE CRADLE FOR THE PIPE CAN BE ELIMINATED.
- THE OWNER SHALL REQUIRE THAT THE SERVICING CONTRACTOR PERFORM FIELD TESTS FOR QUALITY CONTROL OF ALL SANITARY SEWERS. LEAKAGE TESTING SHALL BE COMPLETED IN ACCORDANCE WITH OPS5 410.07.16 AND 407.07.24. DYE TESTING IS TO BE COMPLETED ON ALL SANITARY SERVICES TO CONFIRM PROPER CONNECTION TO THE SANITARY SEWER MAIN. THE FIELD TESTS SHALL BE PERFORMED IN THE PRESENCE OF A CERTIFIED PROFESSIONAL ENGINEER WHO SHALL SUBMIT A CERTIFIED COPY OF TEST RESULTS.
- STORM MANHOLES AND CBMHs SHALL HAVE 300mm SUMPS UNLESS OTHERWISE INDICATED.
- ENSURE MANHOLE CHIMNEY IS ROTATED TO BEST AVOID STANDARD WHEEL PATHING.
- CONTRACTOR TO TELEWISE (CCTV) ALL PROPOSED SEWERS, 200mmØ OR GREATER PRIOR TO BASE COURSE ASPHALT. UPON COMPLETION OF CONTRACT, THE CONTRACTOR IS RESPONSIBLE TO FLUSH AND CLEAN ALL SEWERS & APPURTENANCES.

SWM TANK NOTES:

- THE MINIMUM INTERNAL SIZE OF THE BLOCK 1 STORMWATER MANAGEMENT TANK IS TO BE 70m³. REFER TO THE CROSS SECTION DETAIL AND THE ARCHITECT'S DRAWINGS FOR TANK DIMENSIONS, CONFIGURATION, MATERIALS AND WATERPROOFING DETAILS.
- THE MINIMUM INTERNAL SIZE OF THE BLOCK 2 STORMWATER MANAGEMENT TANK IS TO BE 50m³. REFER TO THE CROSS SECTION DETAIL AND THE ARCHITECT'S DRAWINGS FOR TANK DIMENSIONS, CONFIGURATION, MATERIALS AND WATERPROOFING DETAILS.
- THE ACCESS HATCHES ARE TO OPERATE AS THE EMERGENCY OVERFLOW FOR THE SWM TANK. PROVIDE THE FRAME AND COVERS PER S25 & S28.1 RESPECTIVELY.
- PROVIDE CIRCULAR HOLLOW ALUMINIUM MAINTENANCE HOLE STEPS ALONG TANK WALLS AT THE ACCESS HATCHES PER OPSD 405.010.



NOTE:
THE POSITION OF ALL POLE LINES, CONDUITS, WATERMAINS, SEWERS AND OTHER UNDERGROUND AND OVERGROUND UTILITIES AND STRUCTURES IS NOT NECESSARILY SHOWN ON THE CONTRACT DRAWINGS. AND WHERE SHOWN, THE ACCURACY OF THE POSITION OF SUCH UTILITIES AND STRUCTURES IS NOT GUARANTEED. BEFORE STARTING WORK, DETERMINE THE EXACT LOCATION OF ALL SUCH UTILITIES AND STRUCTURES AND ASSUME ALL LIABILITY FOR DAMAGE TO THEM.

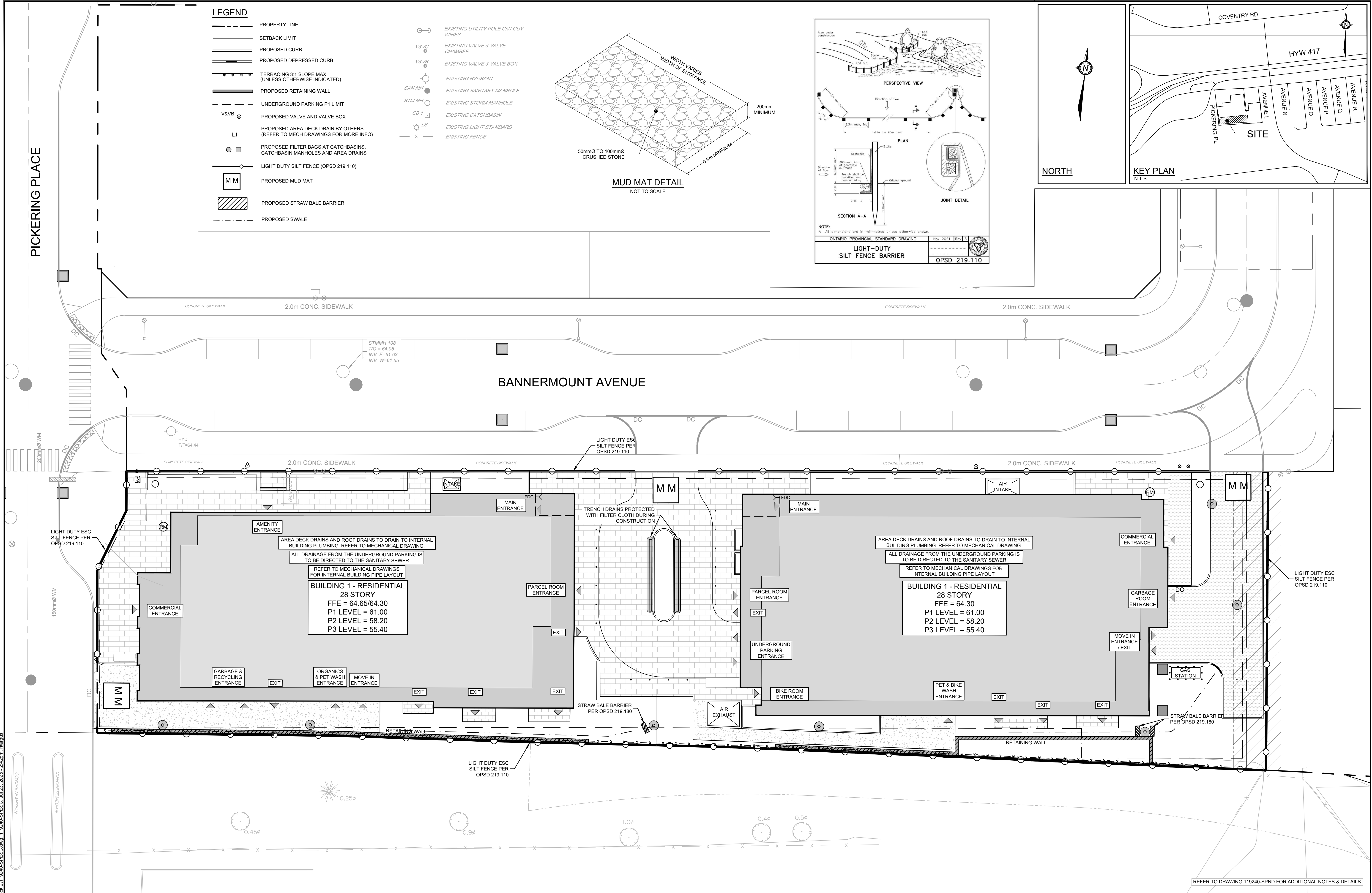
No.	REVISION	DATE	BY
4.	RE-ISSUED FOR SITE PLAN APPLICATION	JULY 23/25	MJH
3.	RE-ISSUED FOR SITE PLAN APPLICATION	MAY 15/25	MJH
2.	ISSUED FOR SITE PLAN APPLICATION	AUG 1/24	MJH
1.	ISSUED FOR SITE PLAN PHASE 2	MAY 10/24	RJK

SCALE	DESIGN
AS SHOWN	MJH
	CHECKED MJH
	DRAWN RJK
	CHECKED MJH
	APPROVED MJH

FOR REVIEW ONLY

NOVATECH Engineers, Planners & Landscape Architects Suite 200, 240 Michael Cowpland Drive Ottawa, Ontario, Canada K2M 1P6 Telephone (613) 254-9643 Facsimile (613) 254-5867 Website www.novatech-eng.com

LOCATION CITY OF OTTAWA 22 PICKERING PLACE - BLOCK 1 & BLOCK 2	PROJECT No. 119240
DRAWING NAME NOTES & DETAILS	REV REV # 4
	DRAWING No. 119240-SPND



NOTE:
THE POSITION OF ALL POLE LINES, CONDUITS, WATERMANS, SEWERS AND OTHER UNDERGROUND AND OVERGROUND UTILITIES AND STRUCTURES IS NOT NECESSARILY SHOWN ON THE CONTRACT DRAWINGS. AND WHERE SHOWN, THE ACCURACY OF THE POSITION OF SUCH UTILITIES AND STRUCTURES IS NOT GUARANTEED. BEFORE STARTING WORK, DETERMINE THE EXACT LOCATION OF ALL SUCH UTILITIES AND STRUCTURES AND ASSUME ALL LIABILITY FOR DAMAGE TO THEM.

No.	REVISION	DATE	BY
3.	RE-ISSUED FOR SITE PLAN APPLICATION	JULY 23/25	MJH
2.	RE-ISSUED FOR SITE PLAN APPLICATION	MAY 15/25	MJH
1.	ISSUED FOR SITE PLAN APPLICATION	AUG 1/24	MJH

SCALE

1:200

0 2 4 6 8

DESIGN	CHECKED	DRAWN	CHECKED	APPROVED
MJH	MJH	RJK	MJH	MJH

FOR REVIEW ONLY

LICENSED PROFESSIONAL ENGINEER
M.J. HREHORIAK
100211256
July 23/25
PROVINCE OF ONTARIO

NOVATECH
Engineers, Planners & Landscape Architects
Suite 200, 240 Michael Cowpland Drive
Ottawa, Ontario, Canada K2M 1P6
Telephone (613) 254-9643
Facsimile (613) 254-5867
Website www.novatech-eng.com

LOCATION
CITY OF OTTAWA
22 PICKERING PLACE - BLOCK 1 & BLOCK 2

DRAWING NAME
EROSION AND SEDIMENT CONTROL PLAN

PROJECT No.	REV	REV #
119240		REV # 3
DRAWING No. 119240-SPESC		

PLAN# 18865

M:\2019\119240\CADD\Design\Block 1 and Block 2\119240-SPESC.dwg, 119240-SPESC, Jul 23, 2025 - 2:42pm, tatarus
PLANT 2019 - 641mm x 914mm x 25mm

200mmØ WATERMAIN TABLE (PICKERING CONNECTION A)			
STATION	ELEVATION	TOP OF WATERMAIN	DESCRIPTION
1+000.0	64.30	62.23±	CONNECTION TO EXISTING 200mmØ WATERMAIN
1+009.7	64.50	62.07	VALVE AND VALVE BOX
1+011.0	64.50	62.02	200mm X 200mm TEE CONNECTION

200mmØ WATERMAIN TABLE (BANNERMOUNT CONNECTION B)			
STATION	ELEVATION	TOP OF WATERMAIN	DESCRIPTION
2+007.0	64.48	62.00	CONNECTION TO EXISTING 200mmØ WATERMAIN
2+008.0	64.50	62.02	VALVE AND VALVE BOX
2+011.7	64.55	62.10	200mm X 200mm TEE CONNECTION

200mmØ WATERMAIN TABLE (BANNERMOUNT CONNECTION C)			
STATION	ELEVATION	TOP OF WATERMAIN	DESCRIPTION
3+000.0	63.96	61.51	CONNECTION TO EXISTING 200mmØ WATERMAIN
3+006.4	64.10	61.89	VALVE AND VALVE BOX
3+006.7	64.10	61.70	CAPPED SERVICE 1.0m FROM BUILDING FACE

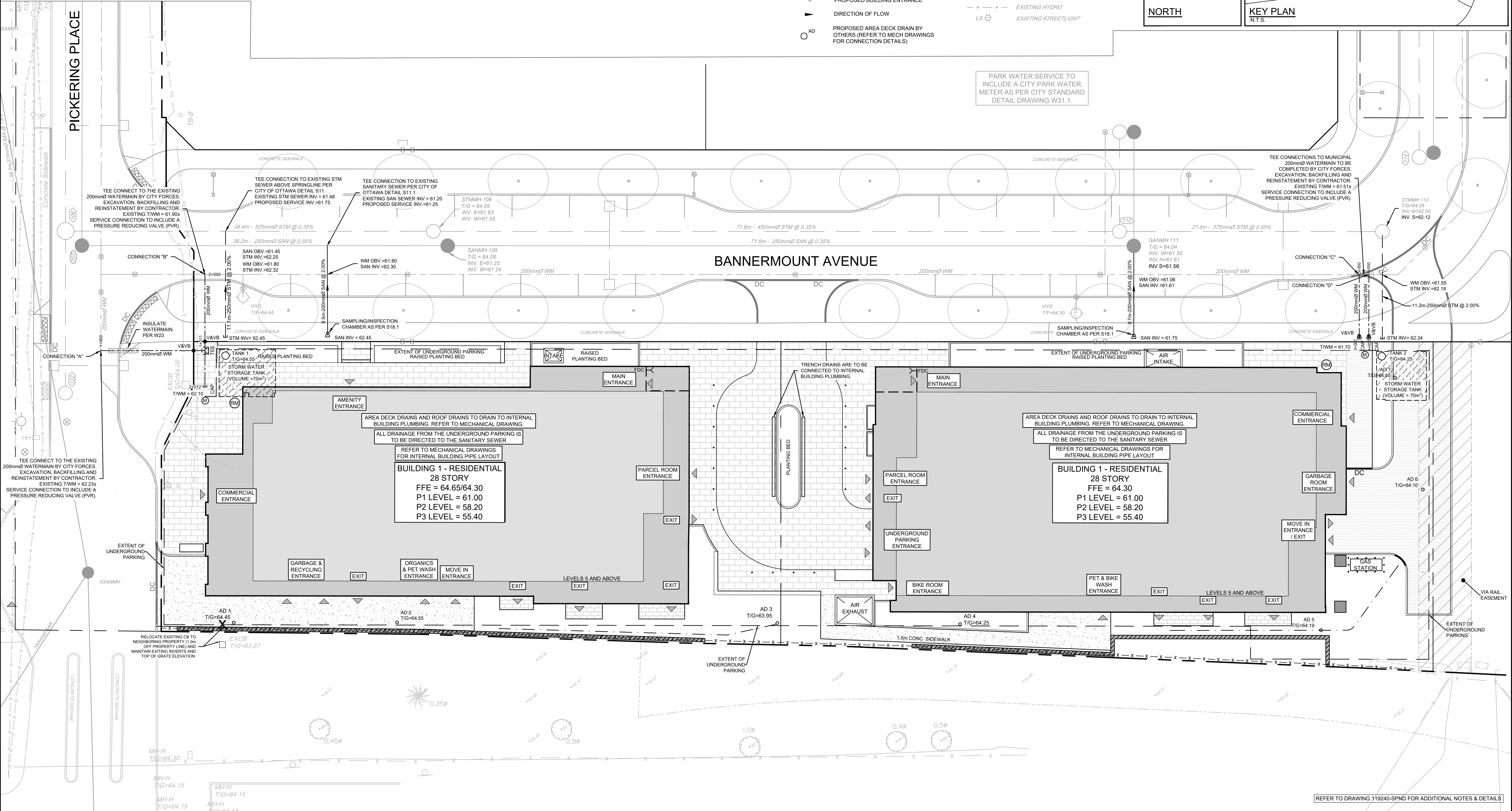
200mmØ WATERMAIN TABLE (BANNERMOUNT CONNECTION D)			
STATION	ELEVATION	TOP OF WATERMAIN	DESCRIPTION
4+000.0	63.96	61.51	CONNECTION TO EXISTING 200mmØ WATERMAIN
4+006.4	64.10	61.89	VALVE AND VALVE BOX
4+006.7	64.10	61.70	CAPPED SERVICE 1.0m FROM BUILDING FACE

LEGEND

PROPERTY LINE	PROPOSED TRENCH DRAIN BY OTHERS (REFER TO MECH DRAWINGS FOR CONNECTION DETAILS)
PROPOSED CURB	PROPOSED TERRACE ENTRANCE
PROPOSED DEPRESSED CURB	EXISTING UTILITY POLE C/W GUY WIRES
PROPOSED WATER SERVICE	EXISTING WATERMAIN C/W VALVE & VALVE CHAMBER
PROPOSED VALVE AND VALVE BOX	EXISTING HYDRANT C/W VALVE & LEAD
PROPOSED CAP	EXISTING SANITARY MANHOLE & SEWER
PROPOSED WATER METER	EXISTING STORM MANHOLE & SEWER
PROPOSED REMOTE METER	EXISTING CATCHBASIN
PROPOSED SIAMESE CONNECTION	EXISTING GAS MAIN
PROPOSED SANITARY SERVICE c/w MANHOLE	EXISTING OVERHEAD WIRES
PROPOSED STORM SEWER AND MANHOLE	EXISTING BELL LINE
PROPOSED BUILDING ENTRANCE	EXISTING HYDRO
DIRECTION OF FLOW	EXISTING STREETLIGHT
PROPOSED AREA DECK DRAIN BY OTHERS (REFER TO MECH DRAWINGS FOR CONNECTION DETAILS)	

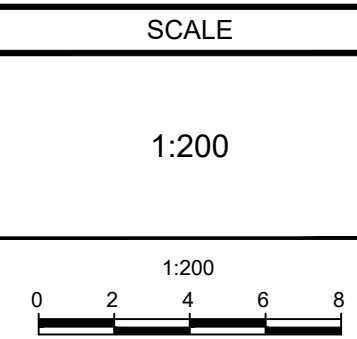
NORTH

KEY PLAN
N.T.S.



NOTE:
THE POSITION OF ALL POLE LINES, CONDUITS,
WATERMANS, SEWERS AND OTHER
UNDERGROUND AND OVERGROUND UTILITIES AND
STRUCTURES IS NOT NECESSARILY SHOWN ON
THE CONTRACT DRAWINGS, AND WHERE SHOWN,
THE ACCURACY OF THE POSITION OF SUCH
UTILITIES AND STRUCTURES IS NOT GUARANTEED.
BEFORE STARTING WORK, DETERMINE THE EXACT
LOCATION OF ALL SUCH UTILITIES AND
STRUCTURES AND ASSUME ALL LIABILITY FOR
DAMAGE TO THEM.

No.	REVISION	DATE	BY
5.	RE-ISSUED FOR SITE PLAN APPLICATION	JULY 23/25	MJH
4.	RE-ISSUED FOR SITE PLAN APPLICATION	MAY 15/25	MJH
3.	ISSUED FOR SITE PLAN APPLICATION	AUG 1/24	MJH
2.	ISSUED FOR SITE PLAN PHASE 2	MAY 10/24	RJK
1.	ISSUED FOR COORDINATION	APR 17/24	MJH



DESIGN	MJH
CHECKED	MJH
DRAWN	RJK
CHECKED	MJH
APPROVED	MJH

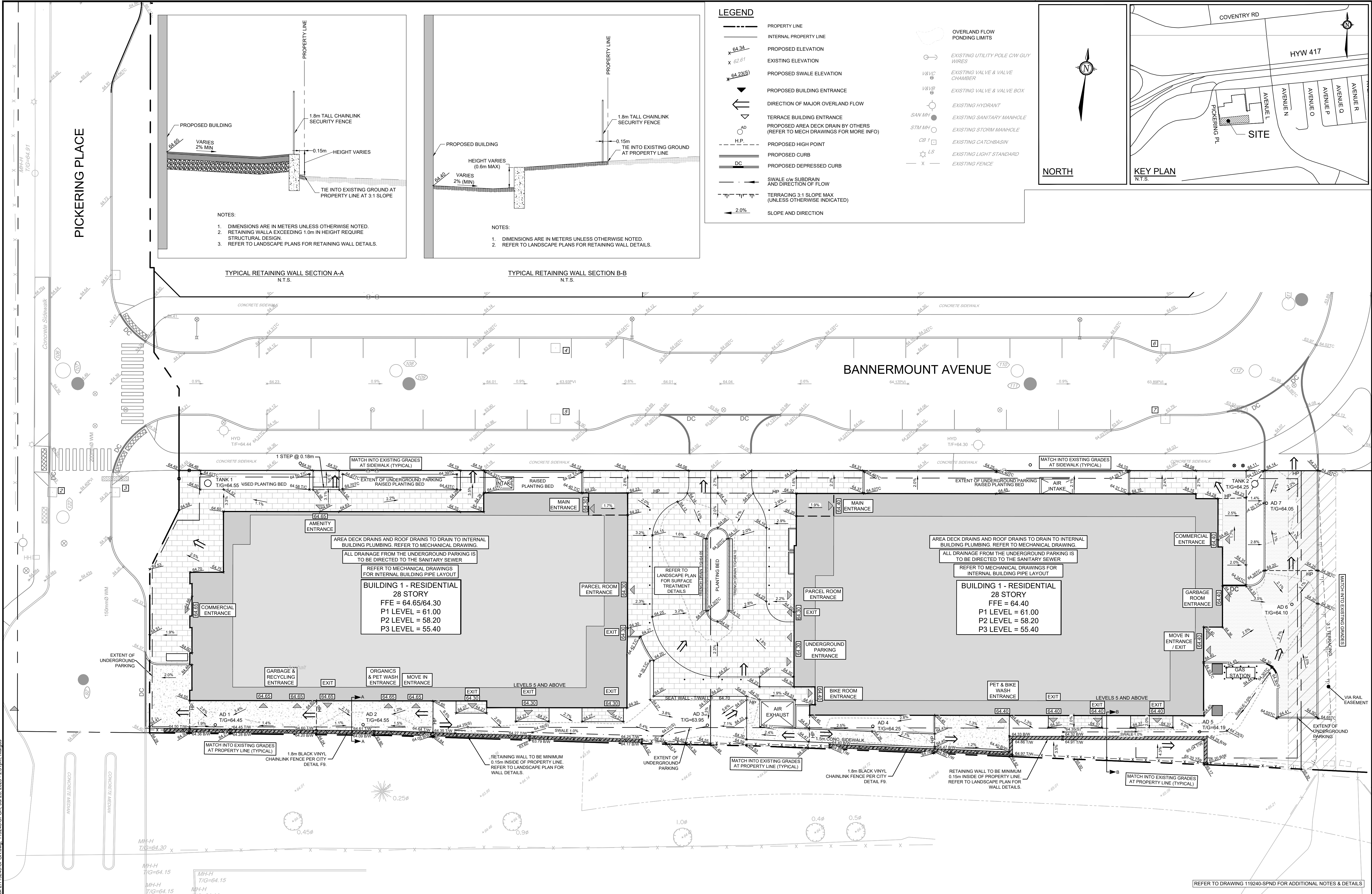
FOR REVIEW ONLY



NOVATECH
Engineers, Planners & Landscape Architects
Suite 200, 240 Michael Cowpland Drive
Ottawa, Ontario, Canada K2M 1P6
Telephone (613) 254-9643
Facsimile (613) 254-5867
Website www.novatech-eng.com

LOCATION CITY OF OTTAWA 22 PICKERING PLACE - BLOCK 1 & BLOCK 2	PROJECT No. 119240
DRAWING NAME GENERAL PLAN OF SERVICES	REV REV # 5
	DRAWING No. 119240-SPGP

PLAN# 18865



LEGEND

PROPERTY LINE

INTERNAL PROPERTY LINE

PROPOSED ELEVATION

EXISTING ELEVATION

PROPOSED SWALE ELEVATION

PROPOSED BUILDING ENTRANCE

DIRECTION OF MAJOR OVERLAND FLOW

TERRACE BUILDING ENTRANCE

PROPOSED AREA DECK DRAIN BY OTHERS
(REFER TO MECH DRAWINGS FOR MORE INFO)

PROPOSED HIGH POINT

PROPOSED CURB

PROPOSED DEPRESSED CURB

SWALE c/w SUBDRAIN
AND DIRECTION OF FLOW

TERRACING 3:1 SLOPE MAX
(UNLESS OTHERWISE INDICATED)

SLOPE AND DIRECTION

○

OVERLAND FLOW
PONDING LIMITS

○

EXISTING UTILITY POLE c/w GUY
WIRES

○

EXISTING VALVE & VALVE
CHAMBER

○

EXISTING VALVE & VALVE BOX

○

EXISTING HYDRANT

○

EXISTING SANITARY MANHOLE

○

EXISTING STORM MANHOLE

○

EXISTING CATCHBASIN

○

EXISTING LIGHT STANDARD

○

EXISTING FENCE

NOTE:
THE POSITION OF ALL POLE LINES, CONDUITS,
WATERMANS, SEWERS AND OTHER
UNDERGROUND AND OVERGROUND UTILITIES AND
STRUCTURES IS NOT NECESSARILY SHOWN ON
THE CONTRACT DRAWINGS, AND WHERE SHOWN,
THE ACCURACY OF THE POSITION OF SUCH
UTILITIES AND STRUCTURES IS NOT GUARANTEED.
BEFORE STARTING WORK, DETERMINE THE EXACT
LOCATION OF ALL SUCH UTILITIES AND
STRUCTURES AND ASSUME ALL LIABILITY FOR
DAMAGE TO THEM.

No.	REVISION	DATE	BY
5.	RE-ISSUED FOR SITE PLAN APPLICATION	JULY 23/25	MJH
4.	RE-ISSUED FOR SITE PLAN APPLICATION	MAY 15/25	MJH
3.	ISSUED FOR SITE PLAN APPLICATION	AUG 1/24	MJH
2.	ISSUED FOR SITE PLAN PHASE 2	MAY 10/24	RJK
1.	ISSUED FOR COORDINATION	APR 17/24	MJH

SCALE

1:200

0

2

4

6

8

DESIGN

MJH

CHECKED

MJH

DRAWN

RJK

CHECKED

MJH

APPROVED

MJH

FOR REVIEW ONLY

LICENSED PROFESSIONAL ENGINEER
M.J. HREHORIAK
100211256
July 23/25
PROVINCE OF ONTARIO

NOVATECH

Engineers, Planners & Landscape Architects
Suite 200, 240 Michael Cowpland Drive
Ottawa, Ontario, Canada K2M 1P6
Telephone (613) 254-9643
Facsimile (613) 254-5867
Website www.novatech-eng.com

LOCATION
CITY OF OTTAWA
22 PICKERING PLACE - BLOCK 1 & BLOCK 2

DRAWING NAME
GRADING PLAN

PROJECT No.
119240

REV
REV # 5

DRAWING No.
119240-SPGR

PLAN# 18865