

Replacement Tree Specifications

Note: Proposed tree locations are suggestions only and should be finalized only once construction is complete and should adhere to City of Ottawa Tree Planting Guidelines.

Tree 1 should be a large tree at maturity. Site conditions are expected to be full light exposure and moderate moisture availability. Species suggestions include:

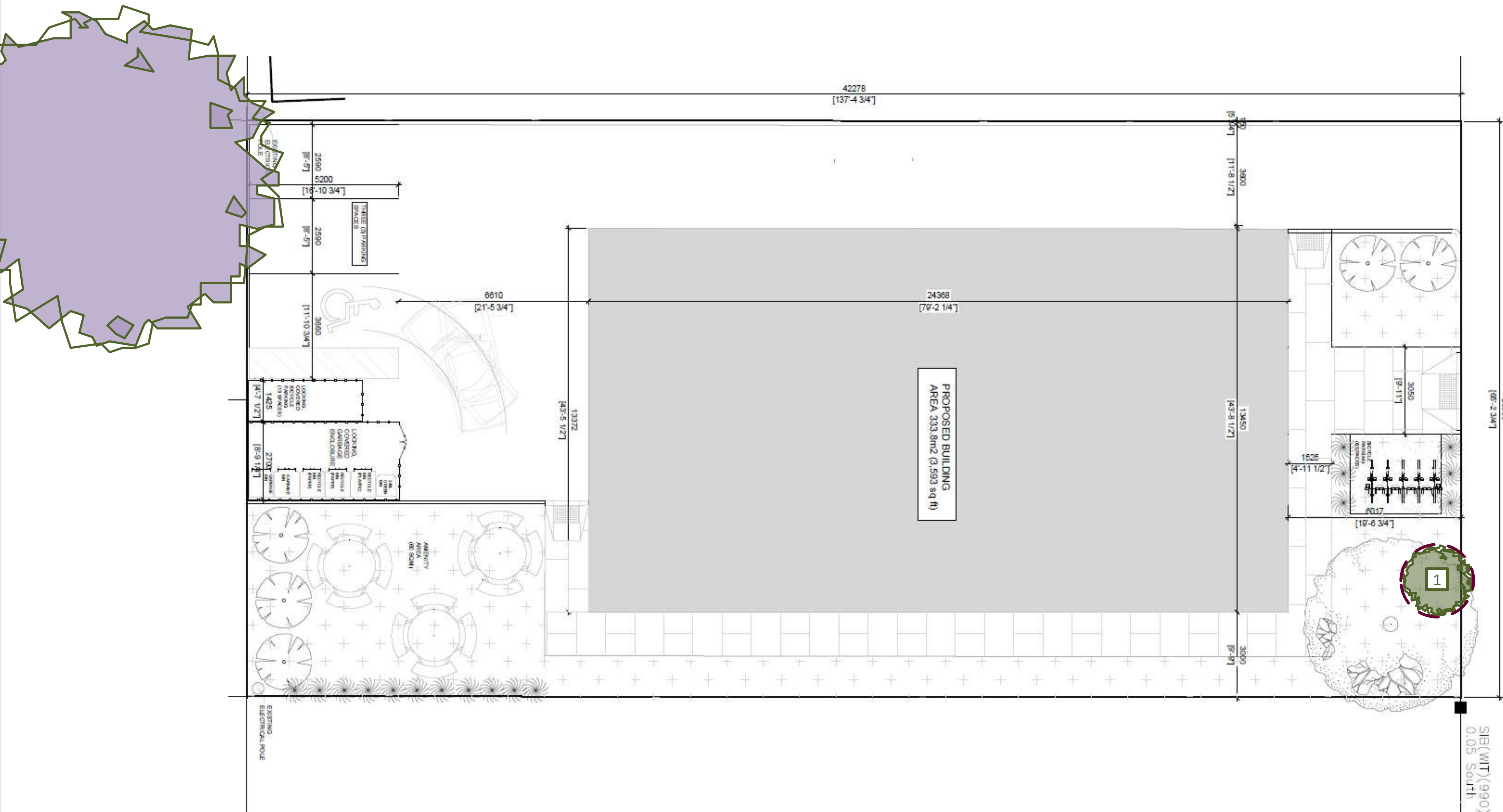
- White oak - *Quercus alba**
- Swamp white oak - *Quercus bicolor**
- Freeman maple - *Acer x freemanii*
- Liberty elm - *Ulmus americana* 'Libertas'*
- Northern catalpa - *Catalpa speciosa*
- Black walnut - *Juglans nigra**
- London plane tree - *Platanus x acerifolia*
- Sycamore - *Platanus occidentalis*
- Yellow birch - *Betula alleghaniensis**
- Kentucky coffee tree - *Gymnocladus dioica*
- Basswood - *Tilia americana**
- Hackberry - *Celtis occidentalis**


*Native to Ottawa region: Planting species native to a region can help maintain and enhance biodiversity.

Note: Norway maple (*Acer platanoides*) is *not* recommended as it is highly invasive and not a suitable tree for urban planting.

The species recommended herein are the most suitable species based on the existing plans. For best success, tree species should be matched to site conditions.

All deciduous trees must be a minimum of 50 mm in diameter measured no less than 15 cm above ground level. Coniferous trees must be no less than 200 cm in height.



- 
- New Private Tree
 - New Tree either fully or partly on city property
 - Existing Tree to be retained