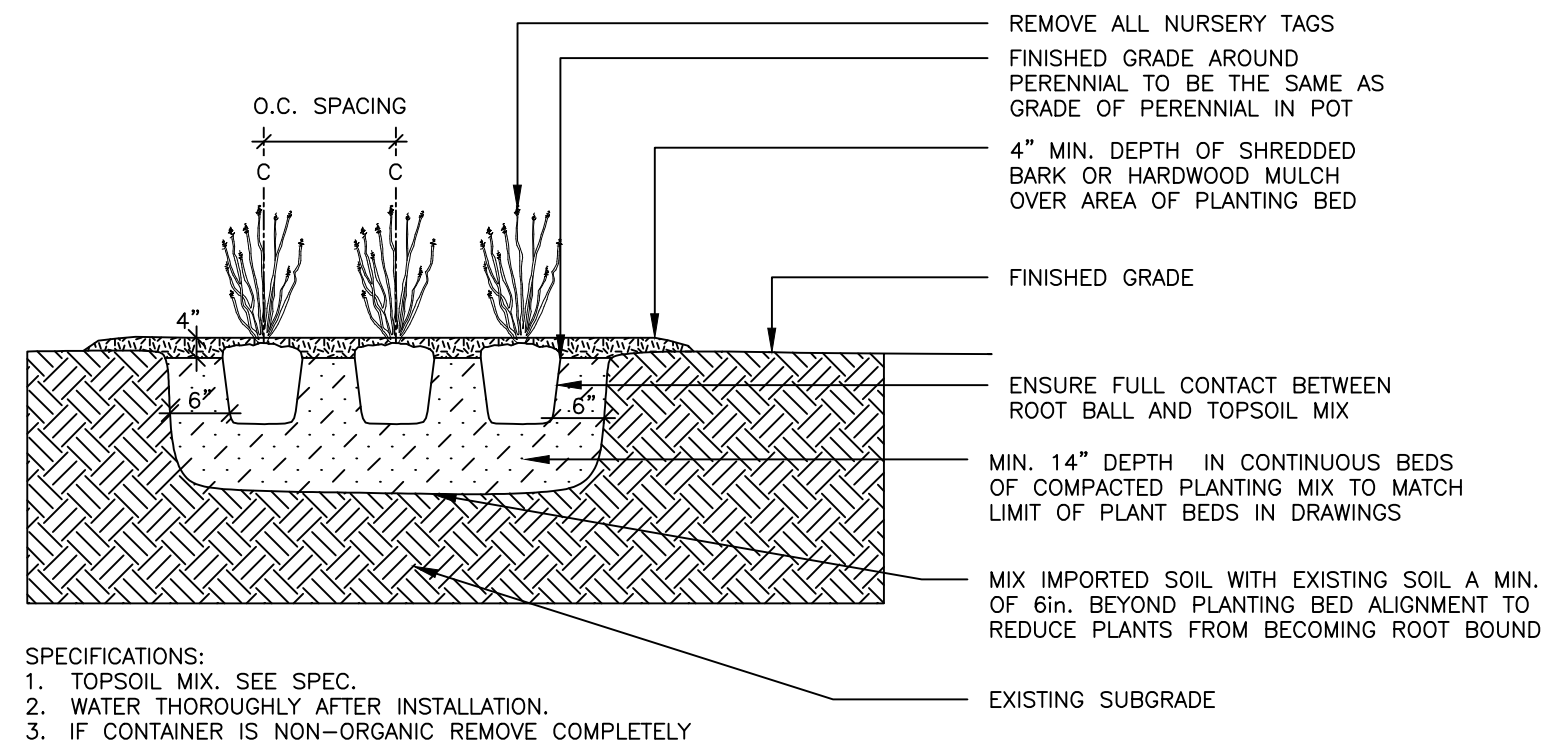
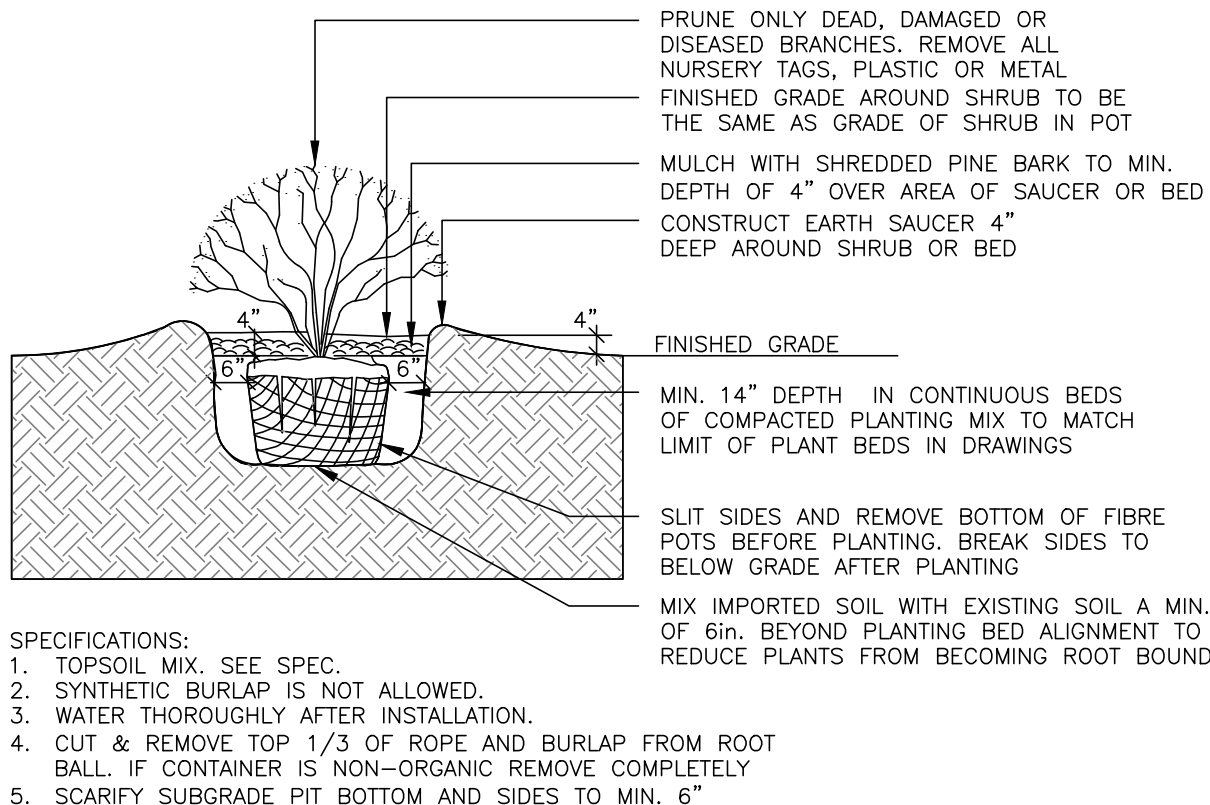


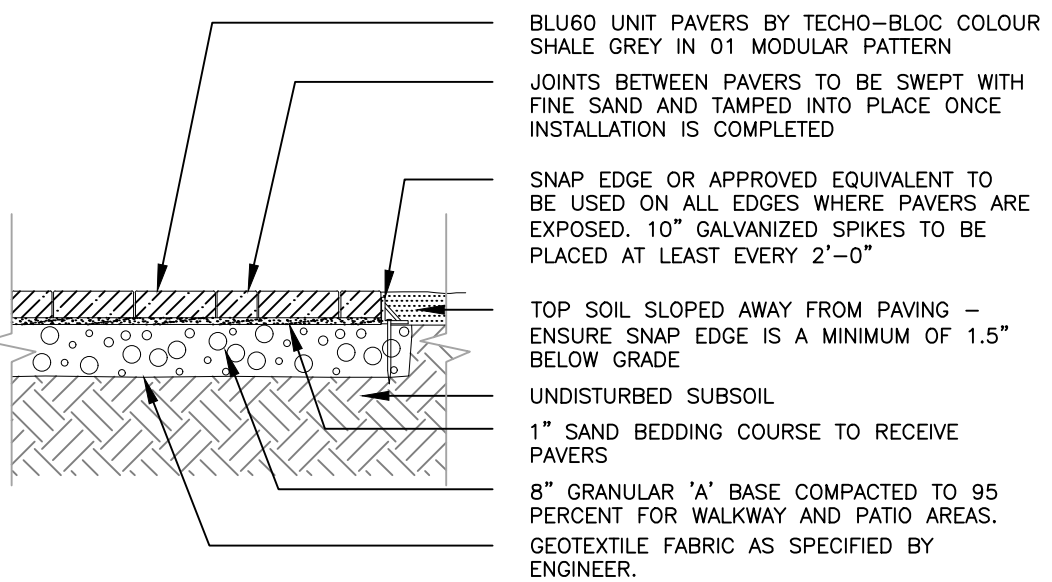
1 DECIDUOUS TREE PLANTING n.t.s.



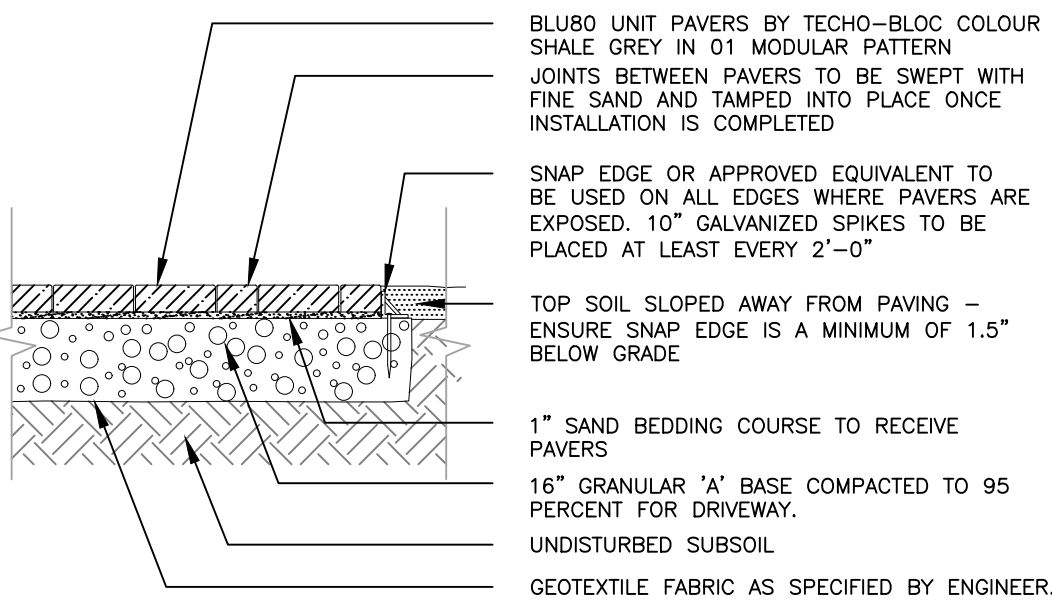
2 PERENNIAL & ORNAMENTAL GRASS PLANTING n.t.s.



3 SHRUB PLANTING n.t.s.



4 UNIT PAVING - PATIO & WALKWAYS n.t.s.



5 UNIT PAVING - DRIVEWAY n.t.s.

Plant List 1136 Gabriel Street (on private property) Orleans ON 21-May-25

Key	Qty	Botanical Name	Common Name	Size	Cdn	Tree spec.	Revisions
**AC	2	Amelanchier canadensis	Serviceberry	45mm	WB	6 m ht, 4 m spr	

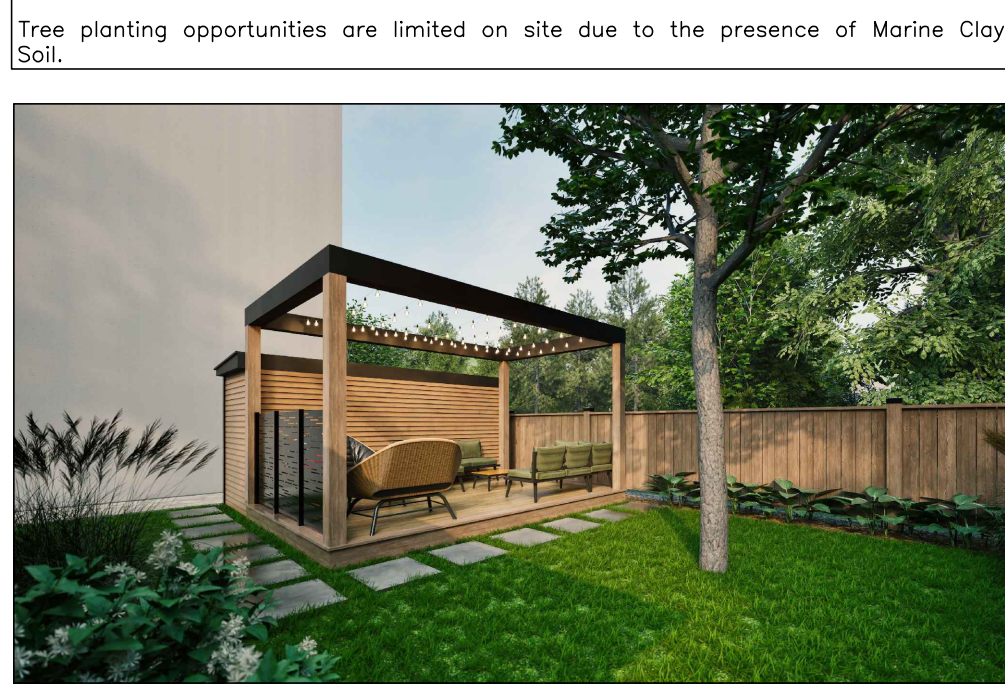
Key	Qty	Botanical Name	Common Name	Size	Cdn	Notes	Revisions
HPL	7	Hydrangea arborescens 'Invincible'	Invincible Limonetta Hydrangea	2 gal pot			
JCD	5	Juniperus communis var. 'Depressa' aurea	Canadian Golden Juniper	50 cm spr	5 gal pot		
POT	4	Physocarpus opulifolius 'Tiny Wine'	Tiny Wine Ninebark	2 gal pot			
SJN	4	Spiraea japonica 'Neon Flash'	Neon Flash Spirea	60 cm ht	3 gal pot		

Key	No	Botanical Name	Common Name	Size	Cdn	Notes	Revisions
CAK	17	Calamagrostis acutifolia 'Karl Forester'	Feather Reed Grass	1 gal pot		plant 32" o.c.	
HH	12	Hemerocallis x 'Stella D'Oro'	Stella D'Oro Hybrid Daylily	1 gal pot		plant 18" o.c.	
SS*	12	Schizachyrium scoparium	Little Bluestem Grass	1 gal pot		plant 36" o.c.	

* indicates native plants
** mature tree canopy as referenced from www.nvknurseries.com

40 YEAR CANOPY CALCULATION:

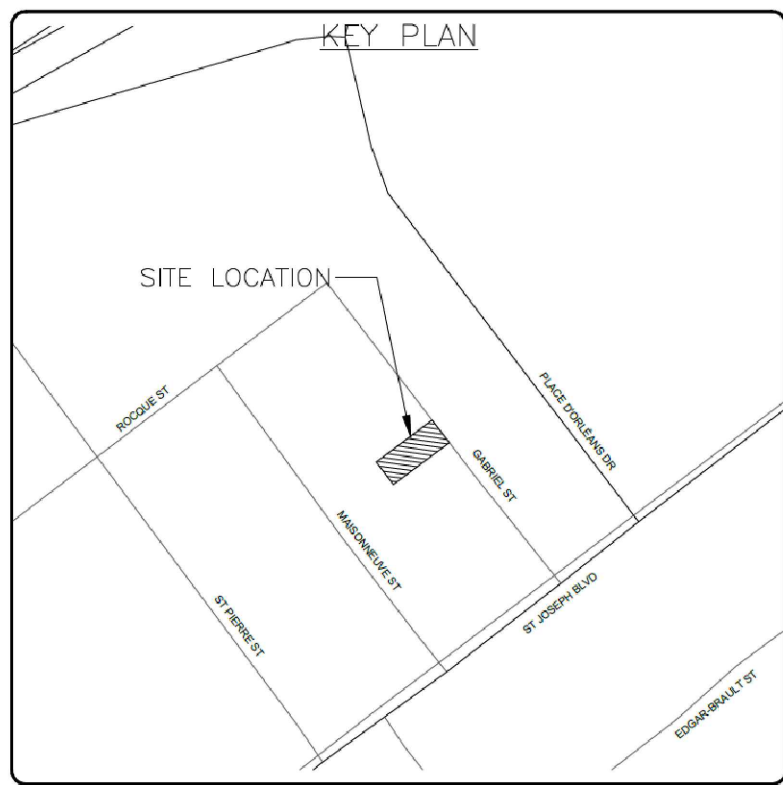
Site Area: 846 m²
Retention Contribution: 0 m² (no existing trees retained).
Planted tree Contribution: Number planted: 2 small-sized deciduous tree
Canopy area contribution: 24.52 m²
Percentage Canopy Cover: 24.52/846*100 = 2.89%



BACKYARD LOUNGE AREA

GENERAL NOTES

- THIS PLAN WAS PREPARED IN CONJUNCTION WITH THE GEOTECHNICAL INVESTIGATION FINAL REPORT PREPARED BY EXP SERVICES INC. DATED 2025-02-21.
- THIS DRAWING IS TO BE READ IN CONJUNCTION WITH ARCHITECTURAL DRAWINGS AND OTHER CONSULTANTS DRAWINGS. SPECIFICALLY REFER TO THE TREE CONSERVATION REPORT PREPARED BY DENDORON, GRADING AND SERVICES PLAN AS WELL AS GEO-TECHNICAL INVESTIGATION REPORT ALL PREPARED BY EXP SERVICES INC.
- IT IS THE RESPONSIBILITY OF THE APPROPRIATE CONTRACTOR OR OFFICIAL TO REPORT ANY ERRORS, OMISSIONS OR DISCREPANCIES IN THIS PLAN WITH ACTUAL CONDITIONS OR OTHER CONSULTANT PLANS PRIOR TO COMMENCING WORK. THE LANDSCAPE ARCHITECT IS NOT RESPONSIBLE FOR SUBSURFACE CONDITIONS.
- IT IS THE RESPONSIBILITY OF THE APPROPRIATE CONTRACTOR TO OBTAIN ALL REQUIRED PERMITS AND TO OBEY ALL LOCAL BYLAWS AND REGULATIONS.
- IT IS THE RESPONSIBILITY OF THE APPROPRIATE CONTRACTOR TO DETERMINE THE LOCATION OF ALL UNDERGROUND SERVICES BEFORE THE START TO INCLUDE: TELEPHONE CABLES, CABLE TELEVISION, HYDRO CABLES, LIGHTS AND POWER LINES, WEEPING TILES, STORM AND SANITARY SEWERS, NATURAL GAS LINES, IRRIGATION LINES, ETC.
- THE CONTRACTOR IS TO REINSTATE ALL AREAS AND ITEMS DAMAGED AS A RESULT OF CONSTRUCTION ACTIVITIES.
- PLANT SUBSTITUTIONS WILL NOT BE ACCEPTED WITHOUT PRIOR APPROVAL OF THE LANDSCAPE ARCHITECT IN WRITING.
- POSITIVE DRAINAGE TO BE MAINTAINED AT ALL TIMES AWAY FROM THE BUILDING. THIS DRAWING NOT TO BE USED FOR GRADING, REFER TO ENGINEER'S DRAWING FOR GRADING.
- BASE INFORMATION FOR THIS PLAN WAS PREPARED USING THE SURVEY PLAN PREPARED BY ANNIS O'SULLIVAN VOLLEBECK LTD. DATED JULY 27, 2023.



INTERLOCK TO MEET
FLUSH WITH ASPHALT

JOHN SEVIGNY C.E.T.
MANAGER (A), DEVELOPMENT REVIEW EAST
PLANNING, DEVELOPMENT & BUILDING SERVICES
DEPARTMENT, CITY OF OTTAWA

APPROVED
By sevignyjo at 2:34 pm, Aug 22, 2025

GABRIEL STREET

LIMIT OF 1m HIGH
VINYL FENCE

LIMIT OF 1.5m
HIGH VINYL FENCE
INTERLOCK TO MEET
FLUSH WITH ASPHALT

CONC. TOE WALL.
SEE ENG. DWGS.

LIMIT OF CONSTRUCTION
EXTENDS TO PROPERTY LINES
AND TO EDGE OF ROAD

PROPOSED BUILDING

LIMIT OF 1m HIGH
VINYL FENCE

LIMIT OF 1.5m
HIGH VINYL FENCE

JCD 5

CAK 3

SJN 4

POT 4

SS 12

AC 2

HPL 7

HH 12

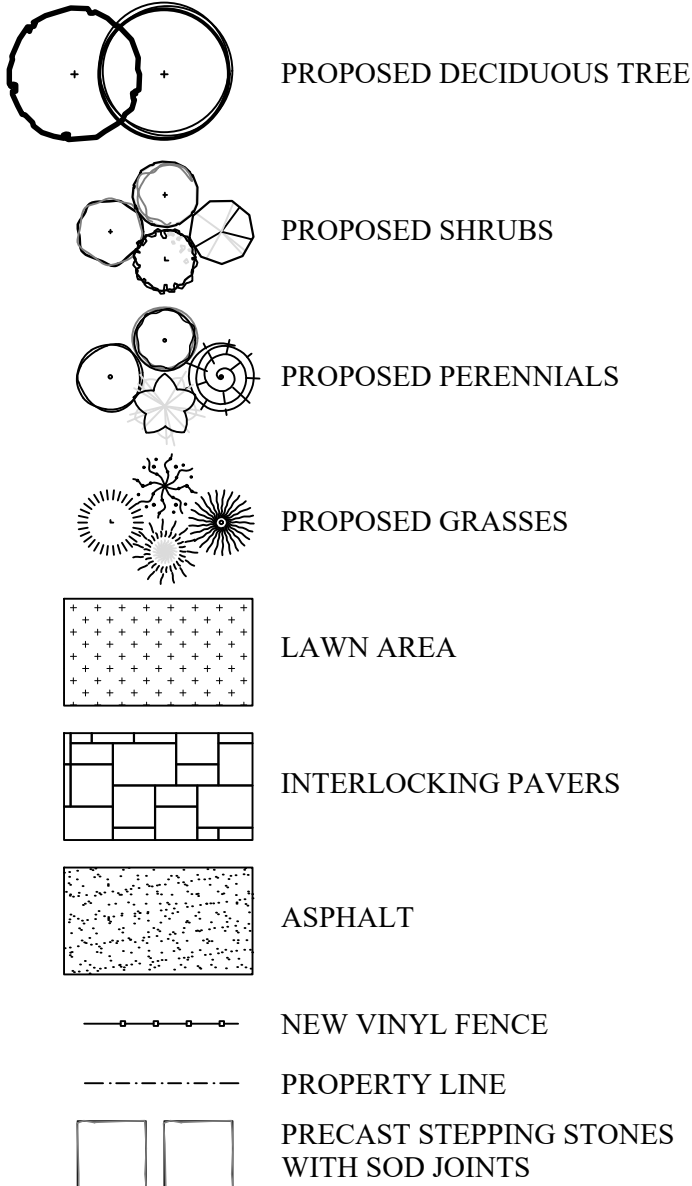
CAK 6

CAK 5

SCALE:1:100

DESIGNED BY ANNE O'SULLIVAN VOLLEBECK LTD. FOR THE EXCLUSIVE
PROPERTY OF THE LANDSCAPE ARCHITECT AND PROTECTED BY
COPYRIGHT. UNPUBLISHED AND NOT FOR SALE.

LEGEND



(L+D) LALANDE + DOYLE ARCHITECTS INC.
www.lplusd.com
Tel: 416.233.2900
Fax: 416.233.1008
129 Hurontario Ave.
Ottawa, Ontario K1V 0Y2

Jain
7405 East Danbro Crescent, 2nd Floor
Mississauga, Ontario, L5N 6P8
Tel: 905 285 9900, Fax: 905 567 5246
Email: mail@jainconsultants.com

exp.
1-877-888-1881 • 416-225-7700
2000 University Ave., Unit 100
Ottawa, ON K2H 6H7
Canada

ENTUITIVE
135 Laurier Avenue West, Suite 518
Ottawa, ON K1P 5J2
+1 343 308 9274

No.	Date	Revision note
13	July 24/25	Bicycle parking updated
12	May 21/25	Updates to planting in front of building
11	May 15/25	Updates as per eng. dwgs.
10	Mar 04/25	Trees added to front garden
9	Jan 14/25	Tree adjustment in rear garden
8	Dec 10/24	Issued for re-submission
7	Dec 09/24	Tree coverage calculation added
6	Dec 05/24	Adjustments to amenity area
5	Oct 31/24	Adjustments to planting
4	Oct 25/24	Updates to parking area
3	Oct 21/24	Adjustments to bicycle access
2	Oct 09/24	Issued for review

John K. Szczepaniak

LANDSCAPE ARCHITECT

tel: (613) 731-2777 fax: (613) 731-6989
e-mail: jszla@rogers.com

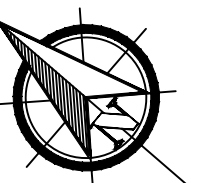


Pulse Societies LTD.
Orleans Development - GBR

1136 Gabriel St.
Ottawa, ON - K1C 1K8

Landscape Plan

CHK: JKS
DRW: EK
DATE: July 08, 2024
ID: 2024-05
SCALE: 1:100



L1