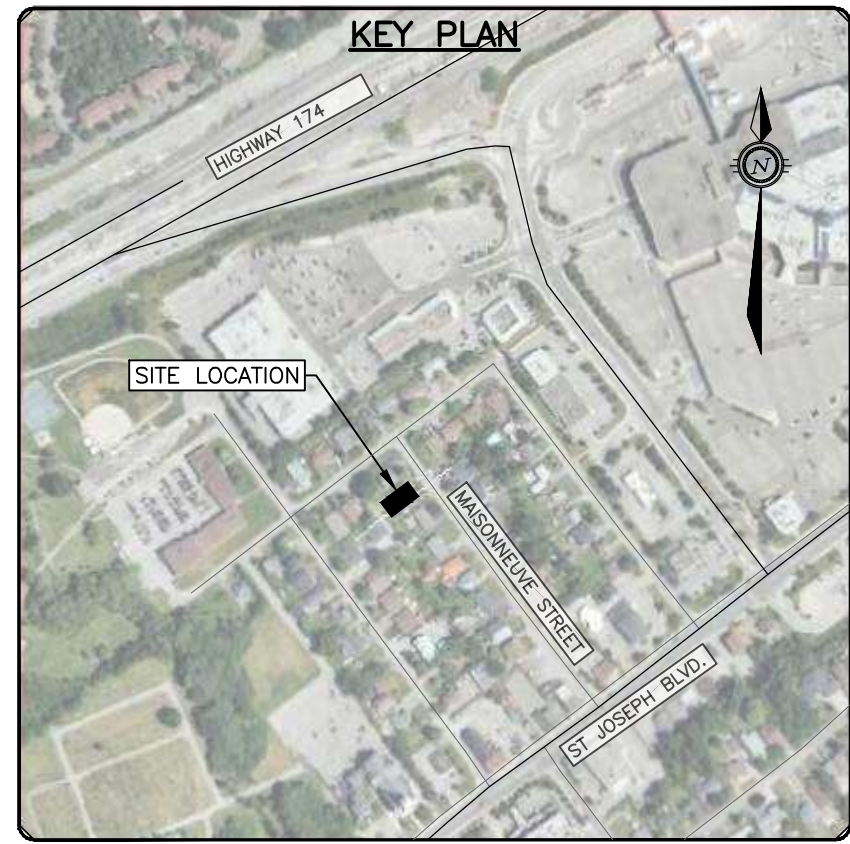
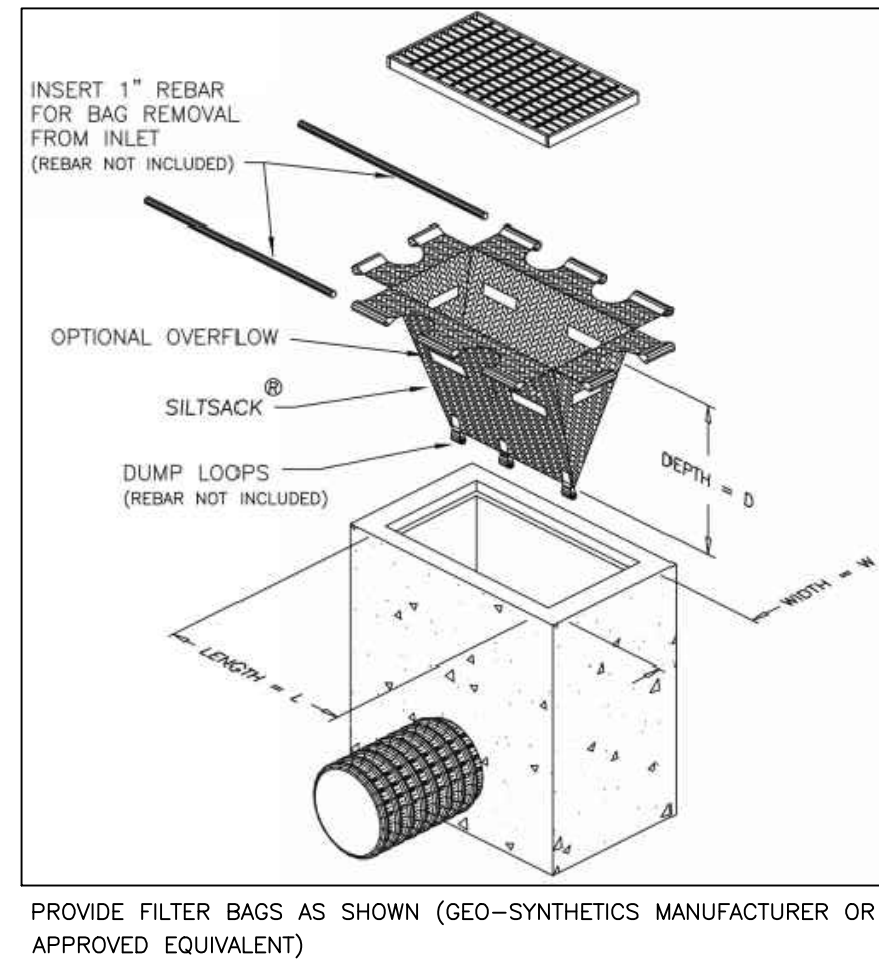
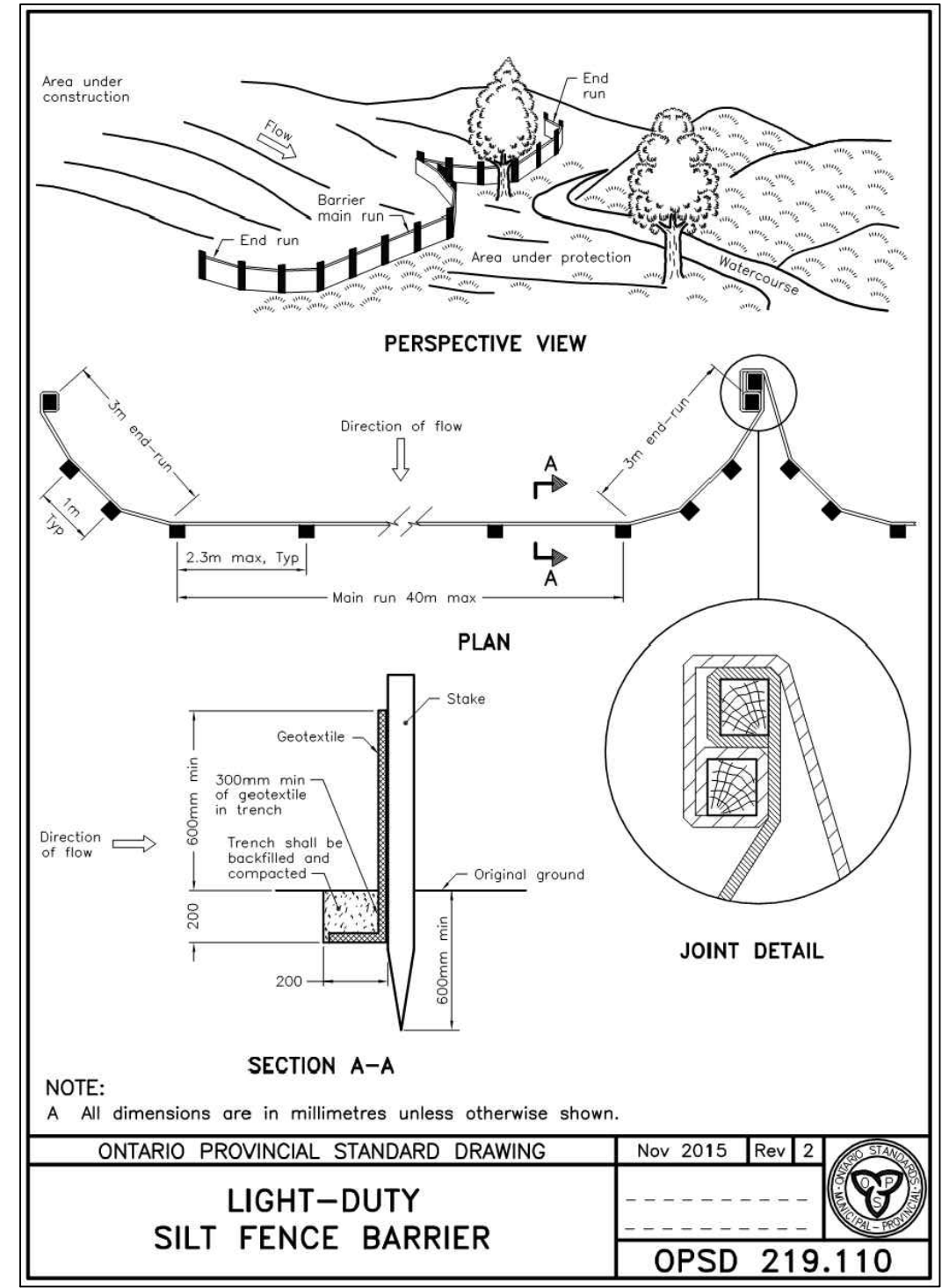


- NOTES:**
1. STONE – USE CLEAR CRUSHED 100mm STONE.
  2. LENGTH – AS REQUIRED BUT NOT LESS THAN 15.0m.
  3. THICKNESS – NOT LESS THAN 300mm.
  4. WIDTH – 7.0m MINIMUM, NOT LESS THAN THE WIDTH AT POINTS WHERE INGRESS OR EGRESS OCCURS.
  5. FILTER CLOTH – WILL BE PLACED OVER THE ENTIRE AREA PRIOR TO PLACING STONE.
  6. MAINTENANCE – THE ENTRANCE SHALL BE MAINTAINED IN A CONDITION WHICH WILL PREVENT TRACKING OR FLOWING OF SEDIMENT ONTO PUBLIC RIGHT-OF-WAY. THIS MAY REQUIRED PERIODIC TOP DRESSING WITH ADDITIONAL STONE AS CONDITIONS DEMAND AND REPAIR AND/OR CLEAN OUT OF ANY MEASURES USED TO TRAP SEDIMENT. ALL SEDIMENT SPILLED, DROPPED OR TRACKED ONTO THE PUBLIC RIGHT-OF-WAY MUST BE REMOVED IMMEDIATELY.
  7. PERIODIC INSPECTION AND NEEDED MAINTENANCE SHALL BE PROVIDED AFTER EACH RAIN.



LEGEND	
	PROPERTY LINE
	EXISTING C. OF ROAD
	EXISTING EDGE OF GRAVEL
	EXISTING EDGE OF PAVEMENT
	300mm MINIMUM EXISTING TREE
	EXISTING FENCE
	EXISTING UTILITY POLE
	SILT FENCE

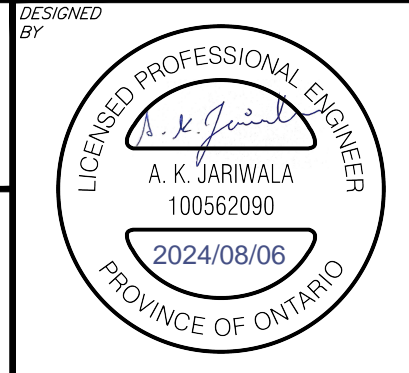
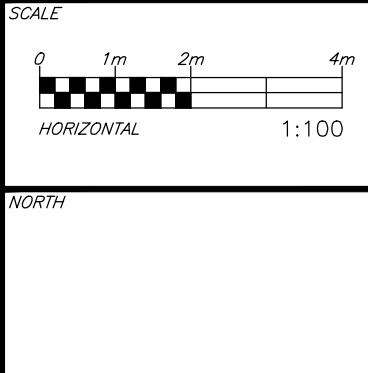


- NOTES:**
1. WOVEN WIRE FENCE TO BE FASTENED SECURELY TO WOOD POSTS WITH WIRE TIES OR STAPLES.
  2. POSTS TO BE SPACED AT 2.3 METRES CENTRE TO CENTRE.
  3. WHEN TWO SECTIONS OF FILTER CLOTH ADJOIN EACH OTHER THEY SHALL BE OVERLAPPED BY A MINIMUM OF 500mm.
  4. MAINTENANCE SHALL BE PERFORMED AS NEEDED AND MATERIAL REMOVED WHEN "BULGES" DEVELOP IN THE SILT FENCE.
  5. WOOD POSTS TO BE HARDWOOD TYPE (50mm x 50mm).
  6. GEOTEXTILE TO BE EMBEDDED 200mm INTO GROUND.
  7. GEOTEXTILE TO CONFORM TO OPSS 805 STANDARDS.
  8. SILT FENCE MUST BE INSTALLED BEFORE COMMENCEMENT OF CONSTRUCTION AND IN ACCORDANCE WITH DETAIL. SILT FENCE CAN BE REMOVED AFTER LANDSCAPING IS COMPLETE.
  9. SEDIMENTS MUST BE CLEARED AWAY WHEN THEY REACH HALF THE HEIGHT OF THE FENCE.

**CAUTION**  
THE POSITION OF ALL POLE LINES, CONDUITS, WATERMAINS, SEWERS AND OTHER UNDERGROUND AND OVERGROUND UTILITIES AND STRUCTURES IS NOT NECESSARILY SHOWN ON THE CONTRACT DRAWINGS, AND WHERE SHOWN, THE ACCURACY OF THE POSITION OF SUCH UTILITIES AND STRUCTURES IS NOT GUARANTEED. BEFORE STARTING WORK, DETERMINE THE EXACT LOCATION OF ALL SUCH UTILITIES AND STRUCTURES AND ASSUME ALL LIABILITY FOR DAMAGE TO THEM.

REV	REVISION DESCRIPTION	DATE	BY	APPD
1	SPA	06/08/24	AGJ	AJ

REV	REVISION DESCRIPTION	DATE	BY	APPD
1	SPA	06/08/24	AGJ	AJ



**PulseSocieties Ltd.**  
135 LAURIER AVE W, SUITE 100  
OTTAWA, ON. K1P 5J2  
613.612.3288

**exp.** Services Inc.  
1-813-888-1899 | F: +1-613-225-7330  
2000 University Ave. Unit 100  
Ottawa, ON K2B 8K6  
Canada  
www.exp.com

• BUILDINGS • EARTH & ENVIRONMENT • ENERGY •  
• INDUSTRIAL • INFRASTRUCTURE • SUSTAINABILITY •

BASEPLAN	PROJECT
AGJ	AGJ
DESIGN	AGJ
CHECKED	AJ
CAD	AGJ
PROJECT MANAGER	AJ
APPROVED	AA

**1108 MAISONNEUVE**  
OTTAWA, ONTARIO. K1C 1L1

**EROSION AND SEDIMENT CONTROL PLAN**

PROJECT No.	DATE	DRAWING No.
OTT-24006872-AD	31/07/24	C300