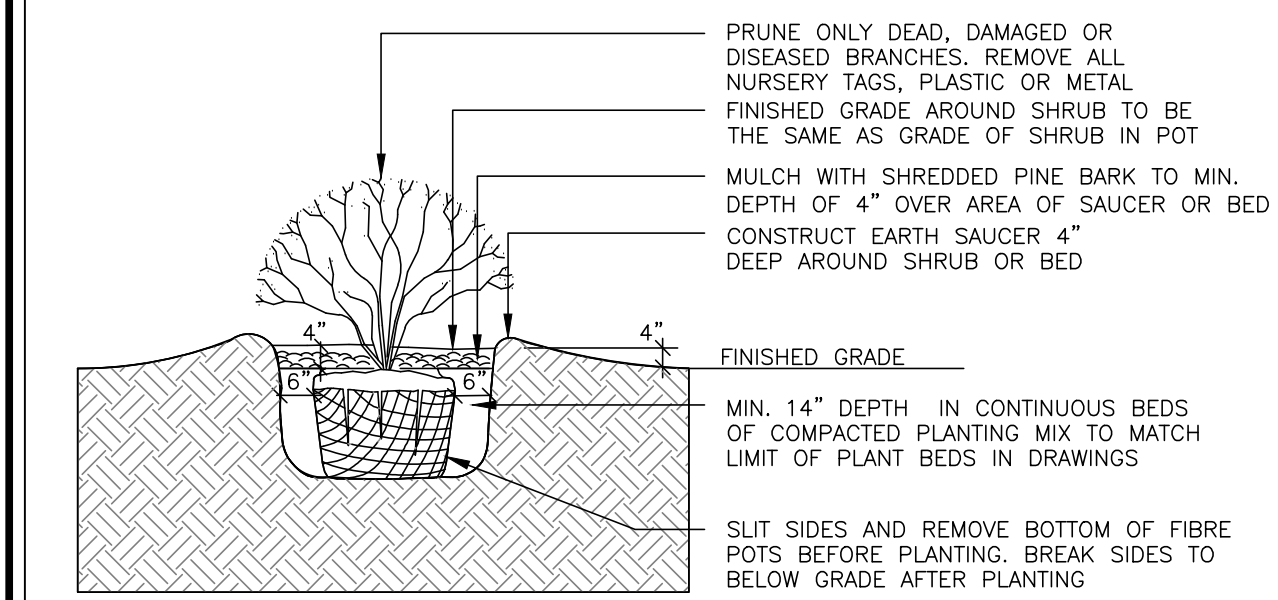
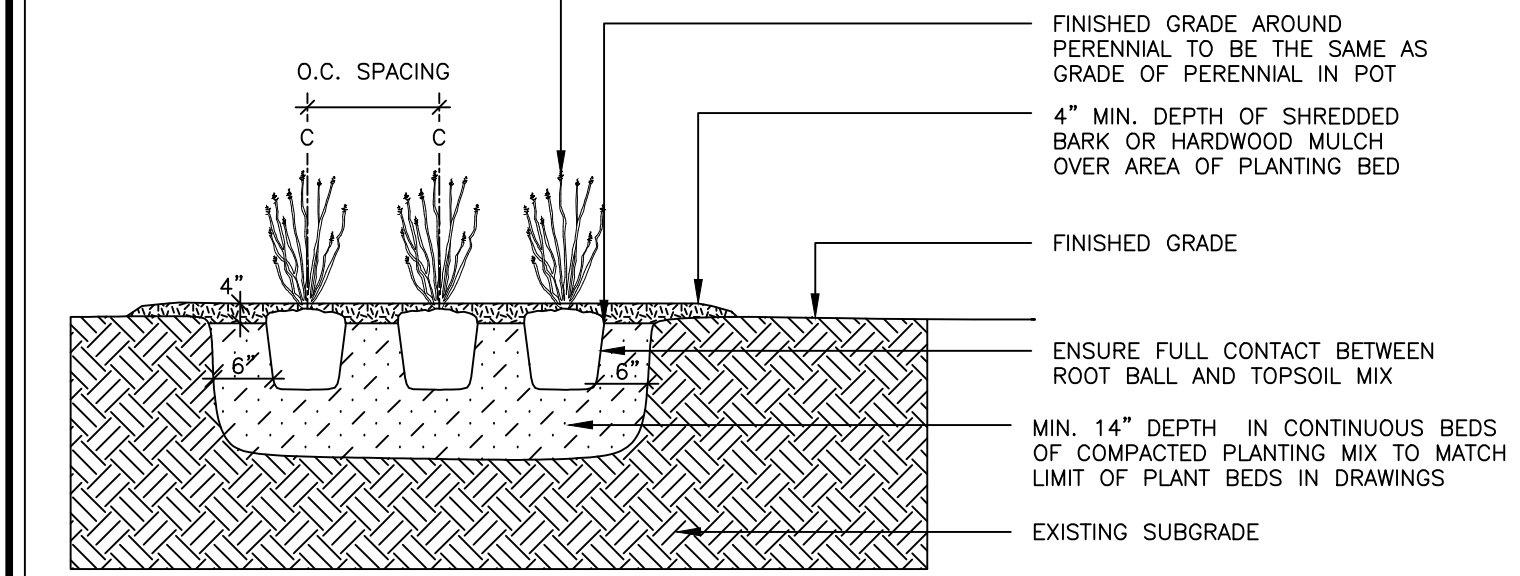


## 1 L.1 DECIDUOUS TREE PLANTING n.t.s.



- SPECIFICATIONS:
1. TOPSOIL MIX. SEE SPEC.
  2. SYNTHETIC BURLAP IS NOT ALLOWED.
  3. WATER THOROUGHLY AFTER INSTALLATION.
  4. CUT & REMOVE TOP 1/3 OF ROPE AND BURLAP FROM ROOT BALL. IF CONTAINER IS NON-ORGANIC REMOVE COMPLETELY
  5. SCARIFY SUBGRADE PIT BOTTOM AND SIDES TO MIN. 6"

## 2 L.1 SHRUB PLANTING n.t.s.



- SPECIFICATIONS:
1. TOPSOIL MIX. SEE SPEC.
  2. WATER THOROUGHLY AFTER INSTALLATION.
  3. IF CONTAINER IS NON-ORGANIC REMOVE COMPLETELY

## 3 L.1 PERENNIAL & ORNAMENTAL GRASS PLANTING n.t.s.



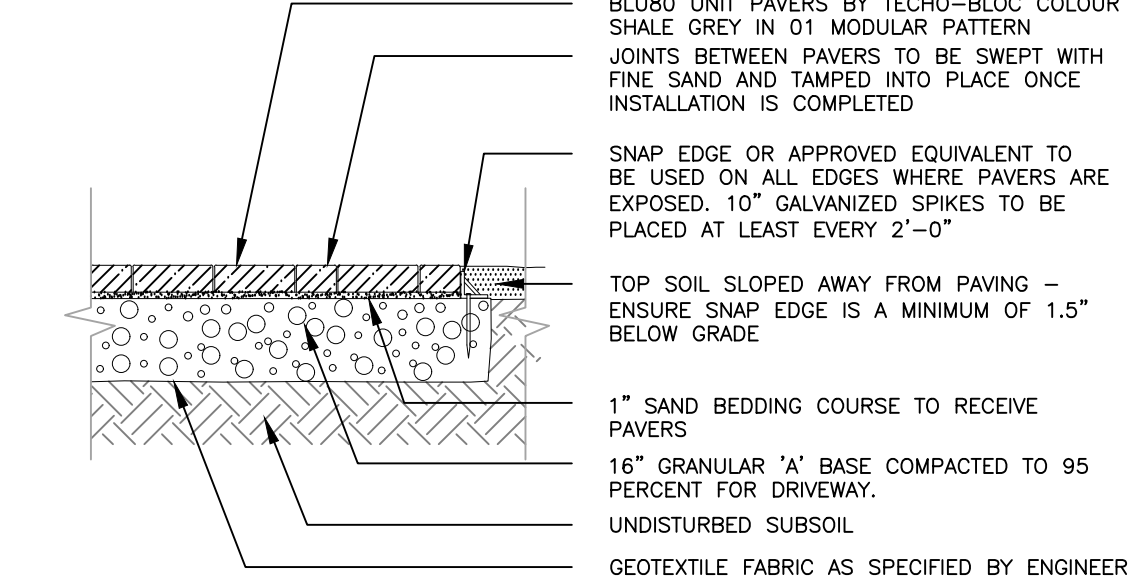
ENTRY SIGN



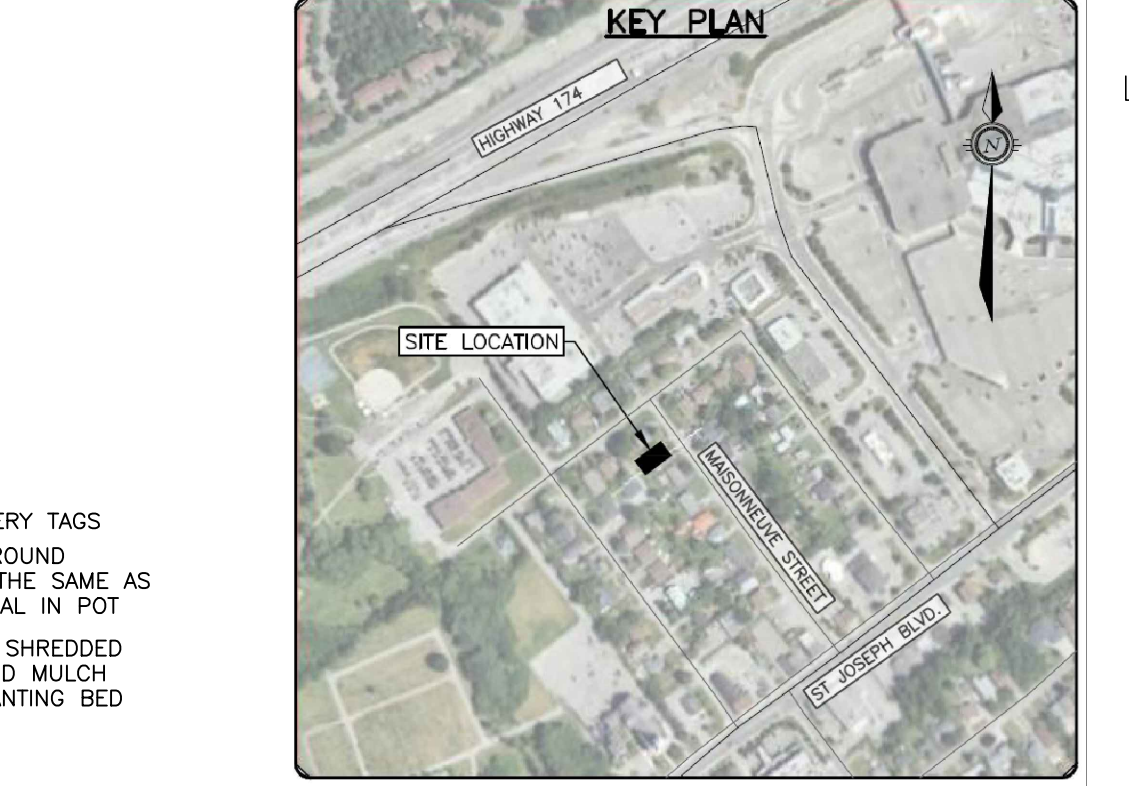
BACKYARD LOUNGE AREA

2024-04-11 08:11:08 MAISONNEUVE 2025-05-15.DWG ISSUED ON May 15, 2025 2:32:38 PM

## 4 L.1 UNIT PAVING - PATIO & WALKWAYS n.t.s.



## 5 L.1 UNIT PAVING - DRIVEWAY n.t.s.



40 YEAR CANOPY CALCULATION:

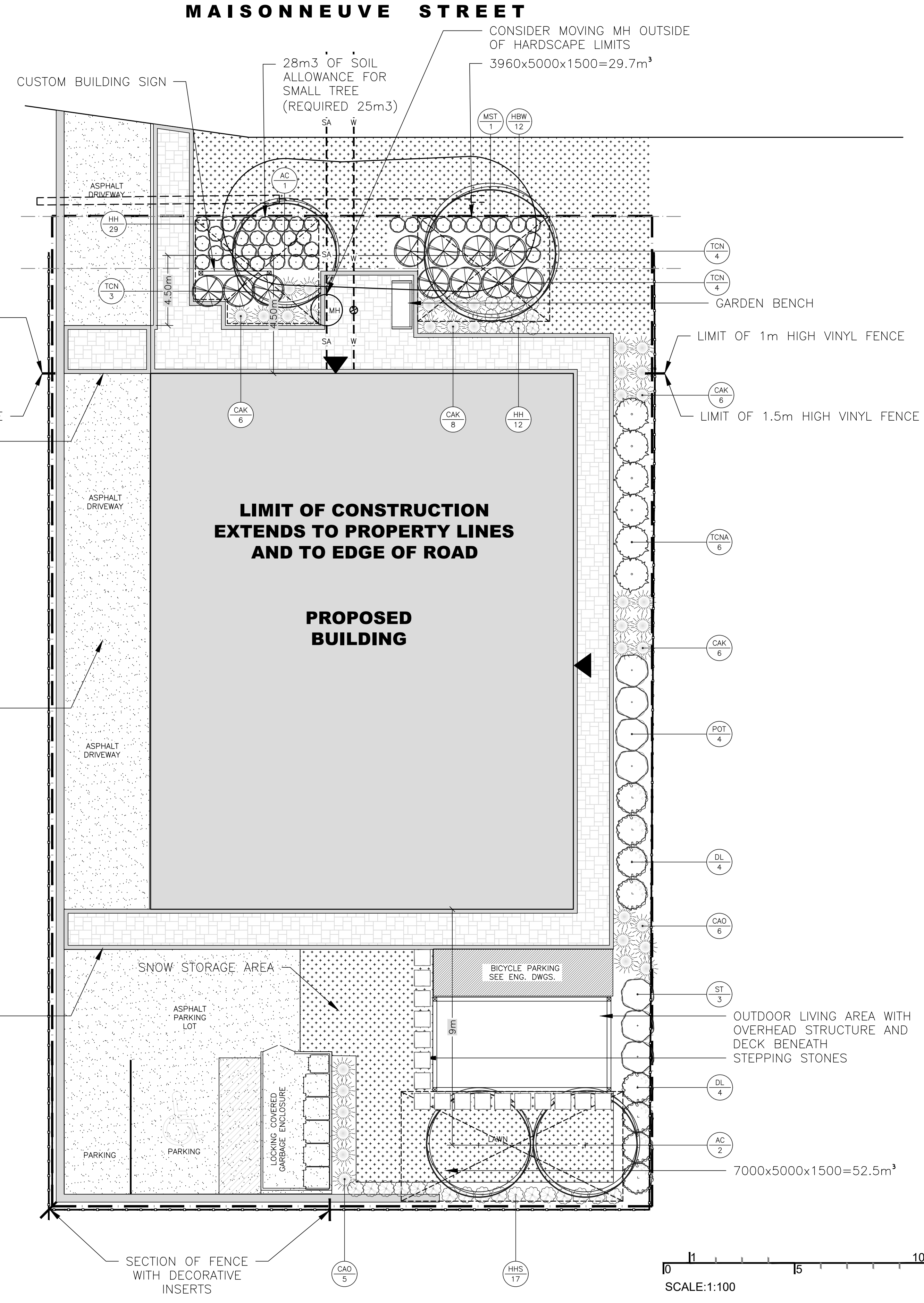
Site Area:	862.80 m <sup>2</sup>
Retention Contribution:	0 m <sup>2</sup> (no existing trees retained).
Planted Tree Contribution:	Number planted: 4 small trees
Canopy area contribution:	56.45 m <sup>2</sup>
Percentage Canopy Cover:	61.68/862.80*100 = 6.54%

Tree planting opportunities are limited on site due to the presence of Marine Clay Soil.

- GENERAL NOTES
1. THIS PLAN WAS PREPARED IN CONJUNCTION WITH THE GEOTECHNICAL INVESTIGATION FINAL REPORT PREPARED BY EXP SERVICES INC. DATED 2025-02-21.
  2. PLEASE NOTE THIS SITE HAS MEDIUM POTENTIAL FOR SOIL VOLUME CHANGE OF THE SENSITIVE SOILS ON SITE. THEREFORE TREES IN THE FRONT OF THE SITE ARE INDICATED.
  3. THIS DRAWING TO BE READ IN CONJUNCTION WITH ARCHITECTURAL DRAWINGS AND OTHER CONSULTANT'S DRAWINGS. SPECIFICALLY REFER TO THE TREE CONSERVATION REPORT PREPARED BY DENDRON, GRADING AND SERVICES PLAN AS WELL AS GEO-TECHNICAL INVESTIGATION REPORT ALL PREPARED BY EXP SERVICES INC.
  4. IT IS THE RESPONSIBILITY OF THE APPROPRIATE CONTRACTOR OR OFFICIAL TO REPORT ANY ERRORS, OMISSIONS OR DISCREPANCIES IN THIS PLAN WITH ACTUAL CONDITIONS OR OTHER CONSULTANT PLANS PRIOR TO COMMENCING WORK. THE LANDSCAPE ARCHITECT IS NOT RESPONSIBLE FOR SUBSURFACE CONDITIONS.
  5. IT IS THE RESPONSIBILITY OF THE APPROPRIATE CONTRACTOR TO OBTAIN ALL REQUIRED PERMITS AND TO OBEY ALL LOCAL BYLAWS AND REGULATIONS.
  6. IT IS THE RESPONSIBILITY OF THE APPROPRIATE CONTRACTOR TO DETERMINE THE LOCATION OF ALL UNDERGROUND SERVICES BEFORE THE START TO INCLUDE: TELEPHONE CABLES, CABLE TELEVISION, HYDRO CABLES, LIGHTS AND POWER LINES, WEEPING TILES, STORM AND SANITARY SEWERS, NATURAL GAS LINES, IRRIGATION LINES, ETC.
  7. THE CONTRACTOR IS TO REINSTATE ALL AREAS AND ITEMS DAMAGED AS A RESULT OF CONSTRUCTION ACTIVITIES.
  8. PLANT SUBSTITUTIONS WILL NOT BE ACCEPTED WITHOUT PRIOR APPROVAL OF THE LANDSCAPE ARCHITECT IN WRITING.
  9. POSITIVE DRAINAGE TO BE MAINTAINED AT ALL TIMES AWAY FROM THE BUILDING. THIS DRAWING NOT TO BE USED FOR GRADING. REFER TO ENGINEER'S DRAWING FOR GRADING.
  10. BASE INFORMATION FOR THIS PLAN WAS PREPARED USING THE SURVEY PLAN PREPARED BY ANNIS O'SULLIVAN VOLLERBECK LTD. DATED JULY 13, 2023.

Plant List 1138 Maisonneuve							
Orleans ON							
15-May-25							
Trees							
Key	Qty	Botanical Name	Common Name	Size	Cdn	Notes	Ultimate size
AC*	3	Amelanchier canadensis	Serviceberry	50 mm cal	WB	small tree	6m ht 4 m spr
MST*	1	Malus sugar tyme	Sugar Tyme Crabapple	45 mm cal	WB	small tree	6m ht 5 m spr
Shrubs							
Key	Qty	Botanical Name	Common Name	Size	Cdn	Notes	Revisions
TCN	11	Taxus cuspidata 'Nana Aurea'	Dwarf Golden Japanese Yew			2 gal pot	
DL*	8	Diervilla lonicera	Bush Honeysuckle			3 gal pot	
POT	4	Physocarpus opulifolius 'Tiny Wine'	Tiny Wine Ninebark	60 cm ht		3 gal pot	
ST	3	Spirea trilobata	Dwarf Vanhouttei Spirea	60 cm ht		3 gal pot	
Perennials/Grasses/Groundcovers							
Key	No	Botanical Name	Common Name	Size	Cdn	Notes	Revisions
CAK	26	Calamagrostis acutifolia 'Karl Forester'	Feather Reed Grass			1 gal pot	plant 32" o.c.
CAO	11	Calamagrostis acutifolia 'Overdam'	Variegated Feather Reed Grass			1 gal pot	plant 24" o.c.
HH	41	Hemerocallis Hybrid 'Stella Supreme'	Stella Supreme Daylily			1 gal pot	plant 18" o.c.
HWS*	17	Hosta helianthoides	Smooth Oxeys			1 gal pot	plant 24" o.c.
HBW	12	Hosta Blue Wedgewood	Blue Wedgewood Hosta			1 gal pot	plant 24" o.c.

\* indicates native plant material  
\*\* mature tree size canopy as per www.nvknurseries.com



- LEGEND
- PROPOSED DECIDUOUS TREE
  - PROPOSED SHRUBS
  - PROPOSED PERENNIALS
  - PROPOSED GRASSES
  - LAWN AREA
  - INTERLOCKING PAVERS
  - ASPHALT
  - STEPPING STONES WITH SOD JOINTS
  - NEW VINYL FENCE
  - PROPERTY LINE
  - SOIL ALLOWANCE FOR TREES

(L+D) LALAINE & DOYLE ARCHITECTS INC.  
www.lplusd.com  
Tel: 613.233.2900  
Fax: 613.233.1000  
159 Holland Ave  
Ottawa, Ontario K1V 0Y2

Jain  
7405 East Danbro Crescent, 2nd Floor  
Mississauga, Ontario, L5N 6P8  
Tel: 905 285 9900, Fax: 905 567 5246  
Email: mail@jainconsultants.com

exp.  
1-877-888-1881 / 1-877-228-7766  
2000 Greenway Drive, Unit 100  
Ottawa, ON K2B 8P6  
Canada

ENTUITIVE  
135 Laurier Avenue West, Suite 518  
Ottawa, ON K1P 5J2  
1-343-308-9274

No.	Date	Revision note
10	May 15/25	Updates as per eng. dwgs.
9	Mar 04/25	Rear garden adjusted and trees added
8	Jan 15/25	Geotechnical report date updated
7	Dec 10/24	Issued for re-submission
6	Dec 09/24	Tree coverage calculation added
5	Oct 31/24	Adjustments to planting
4	Oct 25/24	Minor adjustment to bicycle parking
3	Oct 21/24	Bicycle parking access adjusted
2	Oct 10/24	Revised draft issued for review
1	July 19/24	Preliminary issued for review

John K. Szczepaniak  
LANDSCAPE ARCHITECT  
BIA/OSACA  
tel: (613) 731-2777 fax: (613) 731-6989  
e-mail: jszla@rogers.com



Pulse Societies LTD.  
Orleans Development - MSN  
1108 Maisonneuve  
Ottawa, ON - K1C 1L1

## Landscape Plan

CHK: JKS  
DRW: EK  
DATE: July 08, 2024  
ID: 2024-04  
SCALE: 1:100

L1