

**SURVEYOR'S REAL PROPERTY REPORT  
PART 1 Plan of**

**PART OF LOTS 29 AND 30  
REGISTERED PLAN 86  
CITY OF OTTAWA**

Surveyed by Annis, O'Sullivan, Vollebek Ltd.

Scale 1 : 150



**Metric**

DISTANCES SHOWN ON THIS PLAN ARE IN METRES AND CAN BE CONVERTED TO FEET BY DIVIDING BY 0.3048

**Surveyor's Certificate**

I CERTIFY THAT:  
1. This survey and plan are correct and in accordance with the Surveys Act, the Surveyors Act and the regulations made under them.  
2. The survey was completed on the 7th day of June, 2023.

**JUNE 21, 2023**  
Date  
E. H. Herveyer  
Ontario Land Surveyor

**PART 2**  
THIS PLAN MUST BE READ IN CONJUNCTION WITH SURVEY REPORT DATED June 21, 2023

ANNIS, O'SULLIVAN, VOLLEBEK LTD. grants to 2701292 Ontario Limited ("The Client"), their solicitors, mortgagees, and other related parties, permission to use original, signed, sealed copies of the Surveyor's Real Property Report in transactions involving The Client.

**Notes & Legend**

Denotes	
□	Survey Monument Planted
■	Survey Monument Found
SIB	Standard Iron Bar
IB	Iron Bar
IBØ	Round Iron Bar
(WIT)	Witness
Meas.	Measured
(AOG)	Annis, O'Sullivan, Vollebek Ltd.
(PI)	Registered Plan 86
(P2)	Plan 5R-951
(P3)	Plan 5R-2318
(P4)	(AOG) Plan Dated May 26, 1987
(DI)	Instrument No. N620745
Ø M+S	Maintenance Hole (Sanitary)
T/G	Top of Grate
INV	Invert
— ST —	Underground Storm Sewer
— S —	Underground Sanitary Sewer
— W —	Underground Water
— G —	Underground Gas
— OHW —	Overhead Wires
Ø UP	Utility Pole
Ø HT	Hydro Transformer (Pole Mounted)
• AN	Anchor
• SP	Water Stand Pipe
BF	Board Fence
CLF	Chain Link Fence
RWT	Wooden Retaining Wall
GM	Gas Meter
HM	Hydro Meter
+	Gate
+ 65.00	Location of Elevations
+ 65.00	Top of Retaining Wall Elevations
C/L	Centreline
EG	Edge of Gravel
EA	Edge of Asphalt
EI	Edge of Interlock
Elev.	Elevation

Bearings are grid, derived from Can-Net 2016 Real Time Network GPS observations, and are referenced to specified control points 01919680184 and 019198434761, MTM Zone 9 (76°30' West Longitude) NAD-83 (original).

For bearing comparison, a rotation of 0°0'50" clockwise was applied to bearings on P2, P3 & P4.

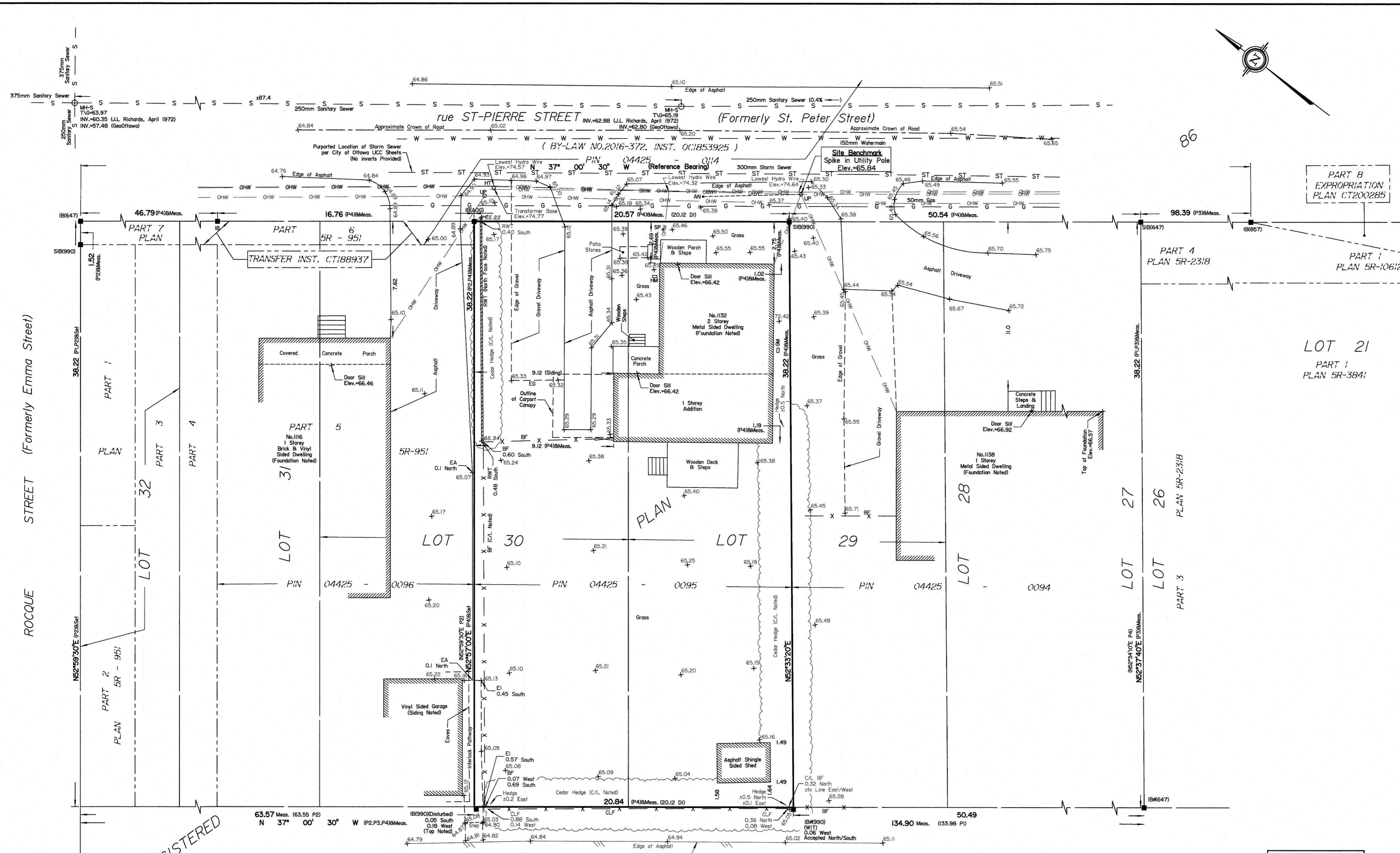
© Annis, O'Sullivan, Vollebek Ltd., 2023. THIS PLAN IS PROTECTED BY COPYRIGHT™

**ANNIS, O'SULLIVAN, VOLLEBEK LTD.**  
14 Concourse Gate, Suite 500  
Nepean, Ont. K2E 7S6  
Phone: (613) 727-0850 / Fax: (613) 727-1079  
Email: Nepean@aovltd.com

Ontario Land Surveyors Job No. E-3507-23 P/L29,30 P/B6 O F

ASSOCIATION OF ONTARIO  
LAND SURVEYORS  
PLAN SUBMISSION FORM  
**V-53776**

THIS PLAN IS NOT VALID UNLESS IT IS AN EMBOSSED ORIGINAL COPY ISSUED BY THE SURVEYOR In accordance with Regulation 1026, Section 29 (3).



- UTILITY NOTES**
- This drawing cannot be accepted as acknowledging all of the utilities and it will be the responsibility of the user to contact the respective utility authorities for confirmation.
  - Only visible surface utilities were located.
  - A field location of underground plant by the pertinent utility authority is mandatory before any work involving breaking ground, probing, excavating etc.
  - Underground Utility information compiled from City of Ottawa Utility sheet reference: C-31-17, C-31-23, C-31-24, Drawing No. 70-1677-01-11, VF01-B02-101.
  - Conflicting sanitary sewer invert elevations exist on the noted plans.

- ELEVATION NOTES**
- Elevations shown are derived from City of Ottawa monument No. 2016-0027 having an elevation of 61.165 metres referred to the CGVD23 geodetic datum.
  - It is the responsibility of the user of this information to verify that the job benchmark has not been altered or disturbed and that its relative elevation and description agrees with the information shown on this drawing.

REGISTERED

BLOCK C  
PIN 04425 - 0156