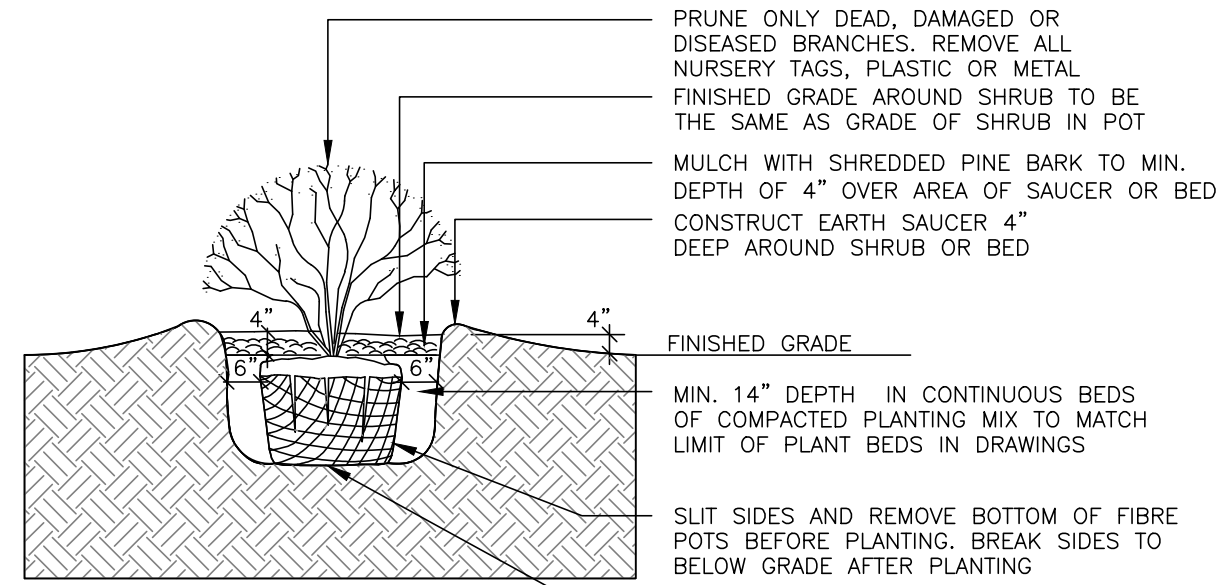
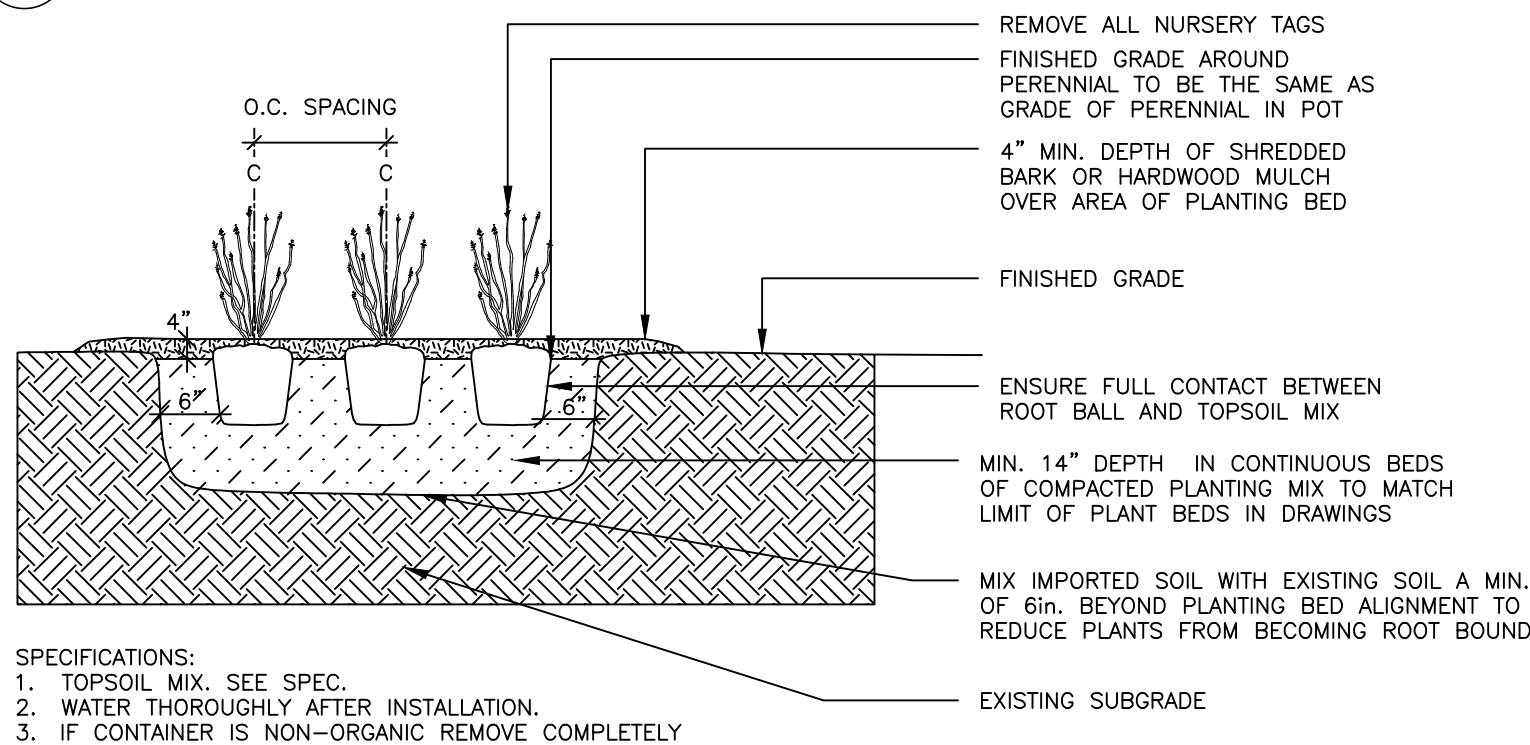


1 L.1 DECIDUOUS TREE PLANTING n.t.s.



- SPECIFICATIONS:
1. TOPSOIL MIX, SEE SPEC.
 2. SYNTHETIC BURLAP IS NOT ALLOWED.
 3. WATER THOROUGHLY AFTER INSTALLATION.
 4. CUT & REMOVE TOP 1/3 OF ROPE AND BURLAP FROM ROOT BALL. IF CONTAINER IS NON-ORGANIC REMOVE COMPLETELY.
 5. SCARIFY SUBGRADE PIT BOTTOM AND SIDES TO MIN. 6".

1 L.1 SHRUB PLANTING n.t.s.



- SPECIFICATIONS:
1. TOPSOIL MIX, SEE SPEC.
 2. WATER THOROUGHLY AFTER INSTALLATION.
 3. IF CONTAINER IS NON-ORGANIC REMOVE COMPLETELY.

2 L.1 PERENNIAL & ORNAMENTAL GRASS PLANTING n.t.s.

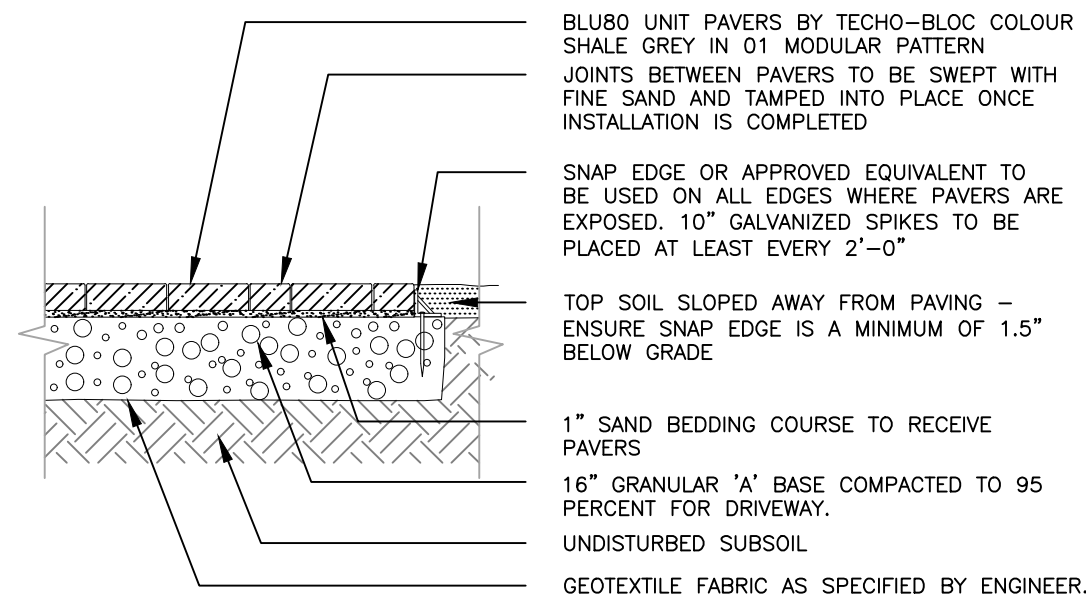
40 YEAR CANOPY CALCULATION:

Site Area:	791 m ²
Retention Contribution:	0 m ² (no existing trees retained).
Planted Tree Contribution:	Number planted: 3 small-sized deciduous tree
Canopy area contribution:	52.90 m ²
Percentage Canopy Cover:	52.90/791*100 = 6.68%

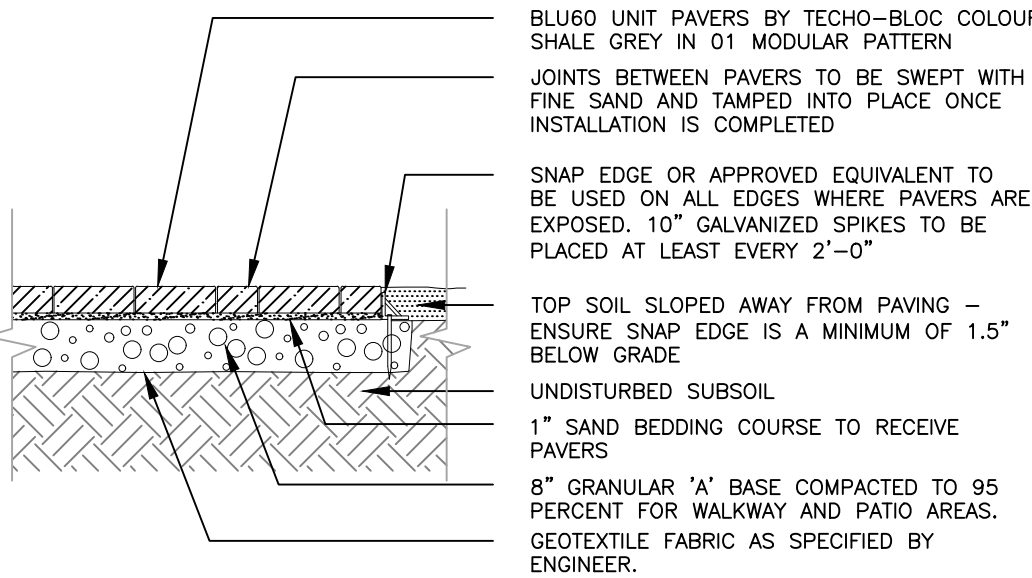
Tree planting opportunities are limited on site due to the presence of Marine Clay Soil.



BACKYARD LOUNGE AREA



4 L.1 UNIT PAVING - DRIVEWAY n.t.s.



3 L.1 UNIT PAVING - PATIO & WALKWAYS n.t.s.

LIMIT OF 1m HIGH VINYL FENCE

LIMIT OF 1.5m HIGH VINYL FENCE

INTERLOCK TO MEET FLUSH WITH ASPHALT

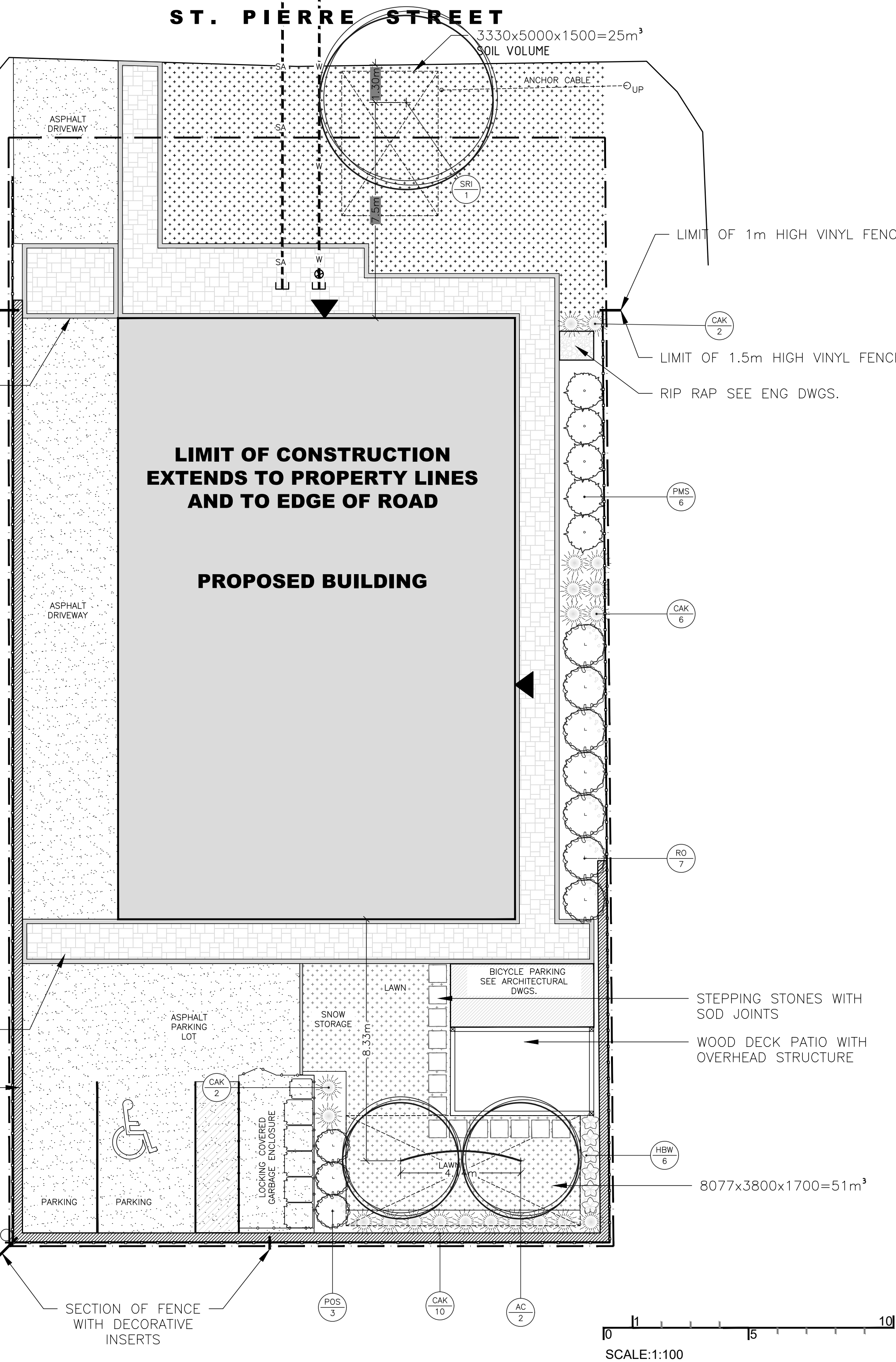
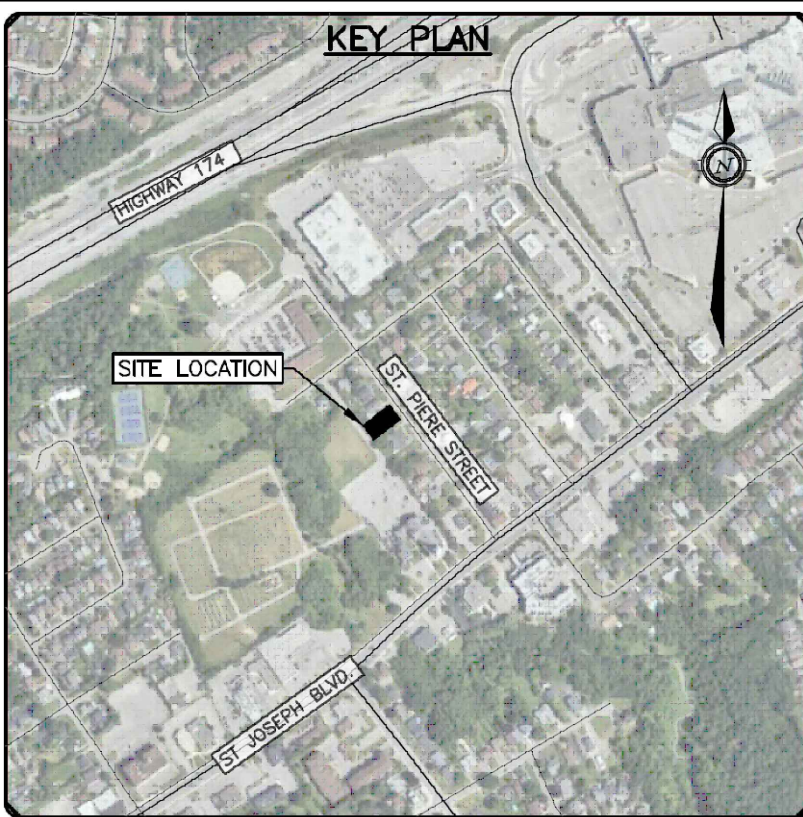
INTERLOCK TO MEET FLUSH WITH ASPHALT

TOE WALL, REFER TO ENG. DWGS.

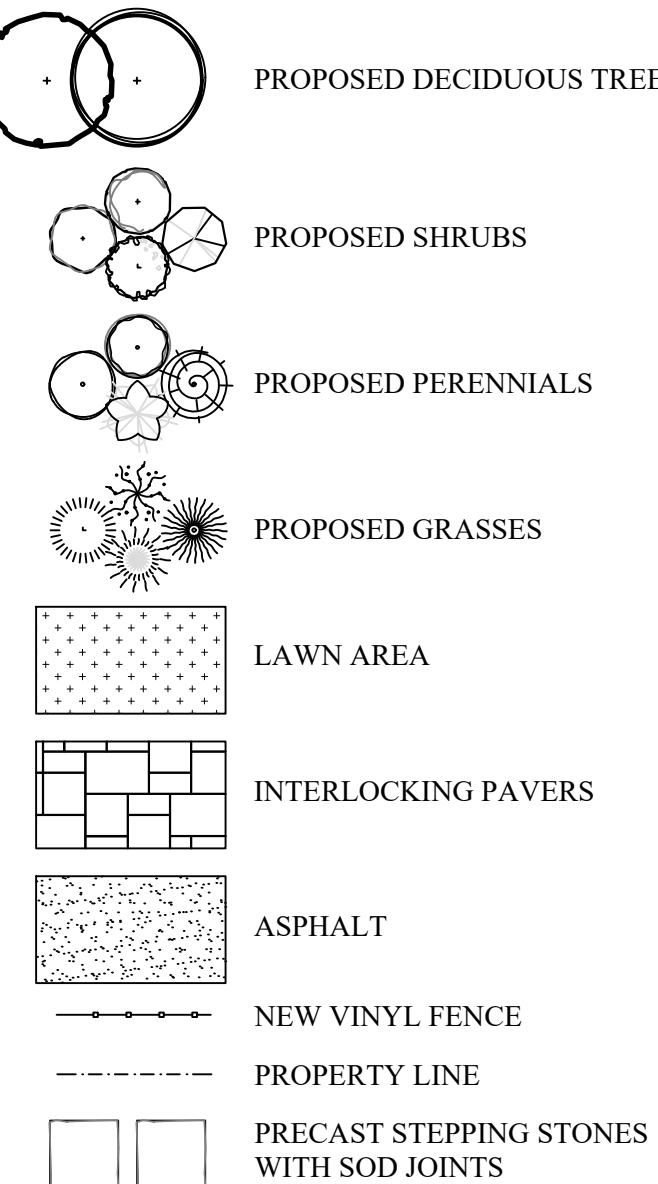
Plant List 1132 St Pierre Street (on private property)								13-Aug-25
Orleans ON								
Trees		Key	Qty	Botanical Name	Common Name	Size	Cdn	Notes
		AC	2	Amelanchier canadensis	Serviceberry	45mm	WB	small tree
Shrubs		Key	Qty	Botanical Name	Common Name	Size	Cdn	Notes
		PMS	6	Pinus mugo 'Slowmound'	Slowmound Mugo Pine	50 cm spr		5 gal pot
		RO	7	Rubus odoratus	Flowering Raspberry	2 gal pot		plant 5' o.c.
		POS	3	Physocarpus opulifolius 'Summerwine Ninebark'	Summerwine Ninebark	3gal pot		shrub
Perennials/Grasses/Groundcovers		Key	No	Botanical Name	Common Name	Size	Cdn	Notes
		CAK	21	Callimargosa acutifolia 'Karl Foerster'	Feather Reed Grass	1 gal pot		plant 12\"/>

Plant List 1132 St Pierre Street (on city property)								13-Aug-25
Orleans ON								
Trees		Key	Qty	Botanical Name	Common Name	Size	Cdn	Notes
		SR	1	Syringa reticulata 'Ivory Silk'	Ivory Silk Lilac Tree	45mm	WB & HB	small tree

* indicates native plant material
** mature tree canopy as referenced from www.nvknurseries.com
*** WB & HB indicates in a wire basket and high branched



LEGEND



(L+D)

LALANDE & BOYLE ARCHITECTS INC.
www.lbandb.com
Tel: 613.233.2800
Fax: 613.233.5008
159 Holland Ave.
Ottawa, Ontario K1V 6Z2

Jain

7405 East Danbro Crescent, 2nd Floor
Mississauga, Ontario, L5N 6P8
Tel: 905 285 9900, Fax: 905 567 5246
Email: mail@jainconsultants.com

exp.
EXP SERVICES INC.
1-877-666-1881 / 416-225-0500
200 Catherine Court, Unit 105
Ottawa, ON K2B 6H6
Canada
• BUILDINGS • EARTH & ENVIRONMENT • ENERGY •
• INFRASTRUCTURE • INFRASTRUCTURE • SUSTAINABILITY •

ENTUITIVE
135 Laurier Avenue West, Suite 518
Ottawa, ON K1P 5J2
t: 343 308 9274

No.	Date	Revision note
15	Aug 13/25	Tree added to R.O.W. requested by City
14	July 24/25	Enlarged bicycle storage updated
13	May 21/25	Planting adjusted in front of building
12	May 15/25	Updates as per eng. dwgs.
11	April 16/25	Rear parking layout updated
10	Mar 04/25	Bench and sign at entry removed
9	Jan 14/25	Trees in rear garden revised
8	Dec 10/24	Issued for re-submission
7	Dec 09/24	Tree coverage calculation added
6	Dec 06/24	Updates to amenities area
5	Oct 31/24	Updates to planting
4	Oct 25/24	Updates to parking area

John K. Szczepaniak

LANDSCAPE ARCHITECT

tel: (613) 731-2777 fax: (613) 731-6989
e-mail: jszka@rogers.com

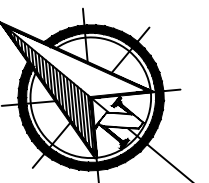


Pulse Societies LTD. Orleans Development - PRR

1132 St. Pierre,
Ottawa, ON - K1C 1L5

Landscape Plan

CHK: JKS
DRW: EK
DATE: July 08, 2024
ID: 2024-03
SCALE: 1:100



L1