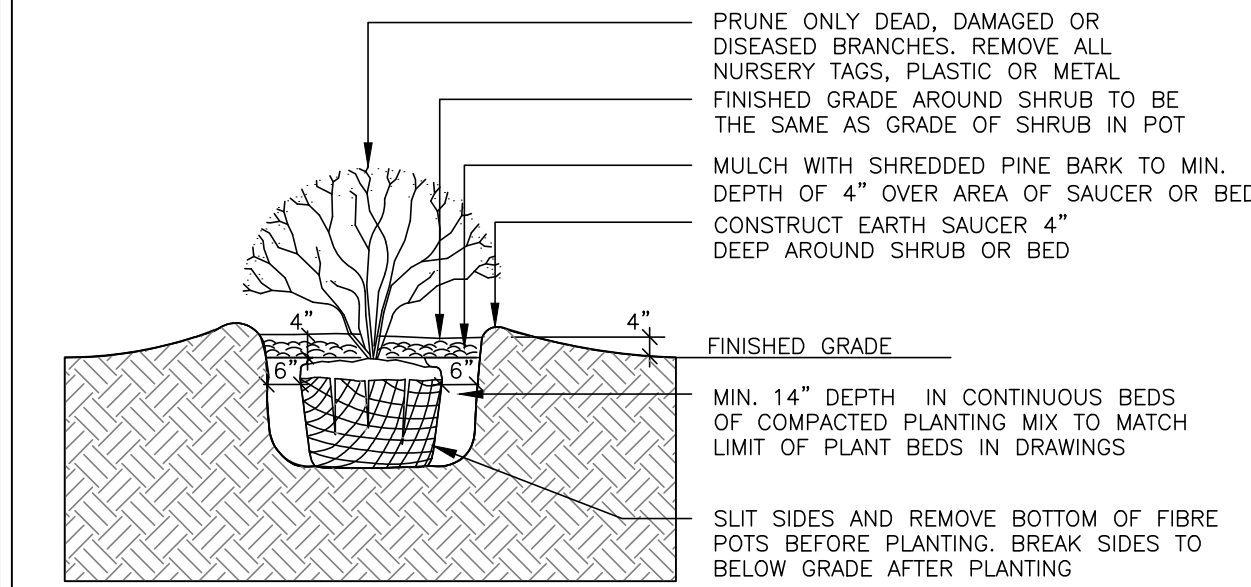
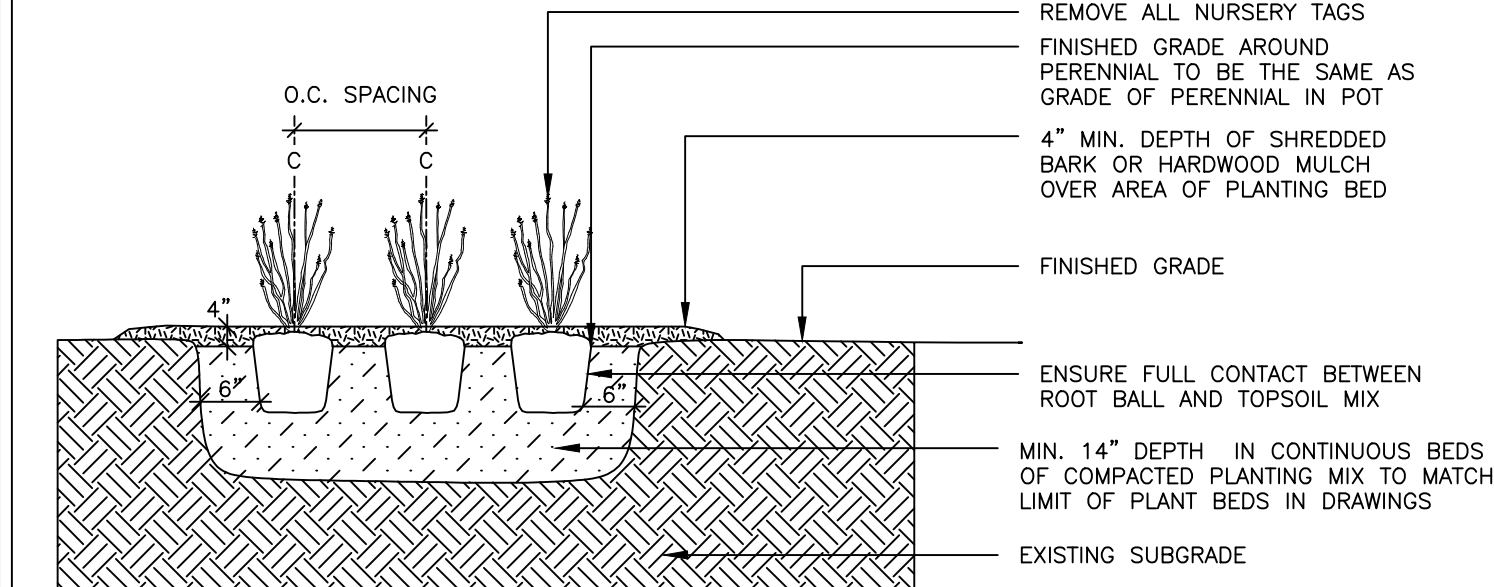


1 L.1 DECIDUOUS TREE PLANTING n.t.s.



- SPECIFICATIONS:
1. TOPSOIL MIX. SEE SPEC.
 2. SYNTHETIC BURLAP IS NOT ALLOWED.
 3. WATER THOROUGHLY AFTER INSTALLATION.
 4. CUT & REMOVE TOP 1/3 OF ROPE AND BURLAP FROM ROOT BALL. IF CONTAINER IS NON-ORGANIC REMOVE COMPLETELY
 5. SCARIFY SUBGRADE PIT BOTTOM AND SIDES TO MIN. 6"

2 L.1 SHRUB PLANTING n.t.s.

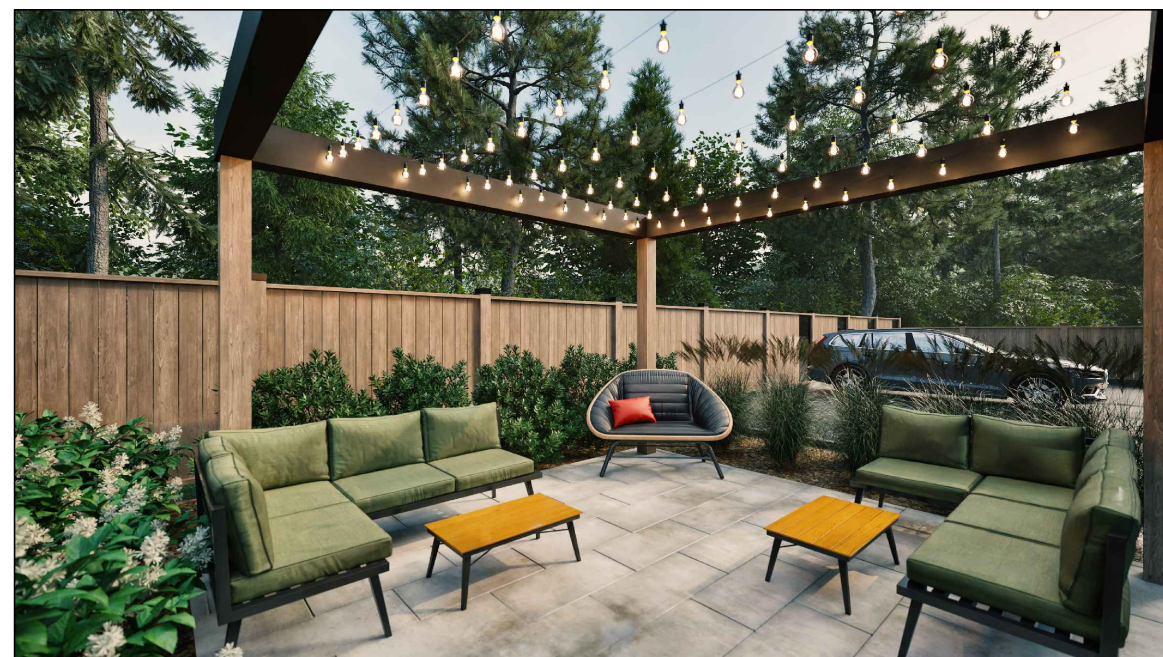


- SPECIFICATIONS:
1. TOPSOIL MIX. SEE SPEC.
 2. WATER THOROUGHLY AFTER INSTALLATION.
 3. IF CONTAINER IS NON-ORGANIC REMOVE COMPLETELY

3 L.1 PERENNIAL & ORNAMENTAL GRASS PLANTING n.t.s.

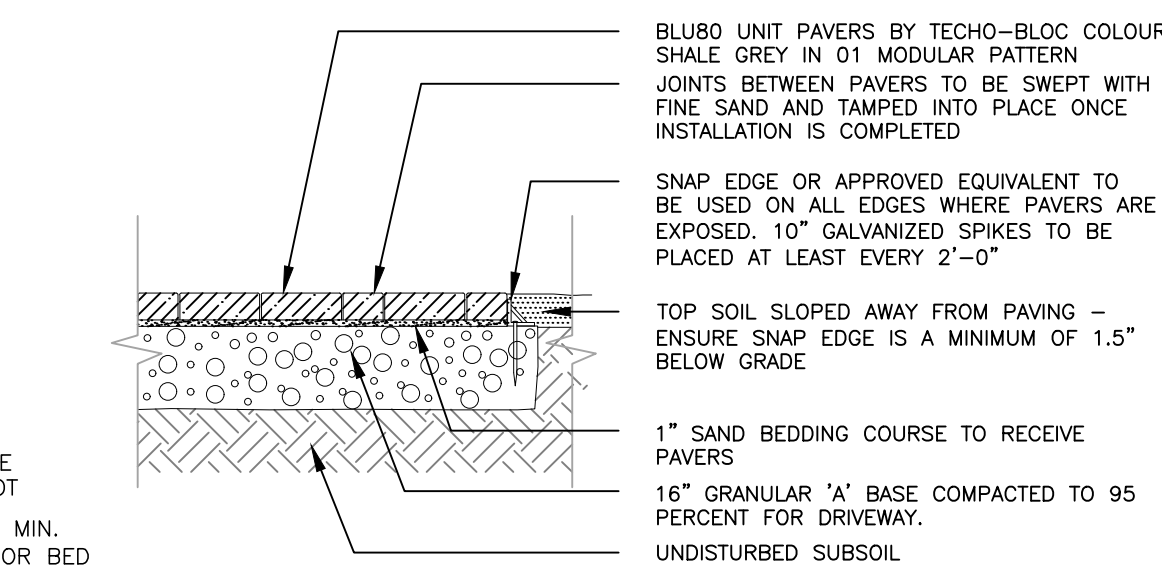


ENTRY SIGN



BACKYARD LOUNGE AREA

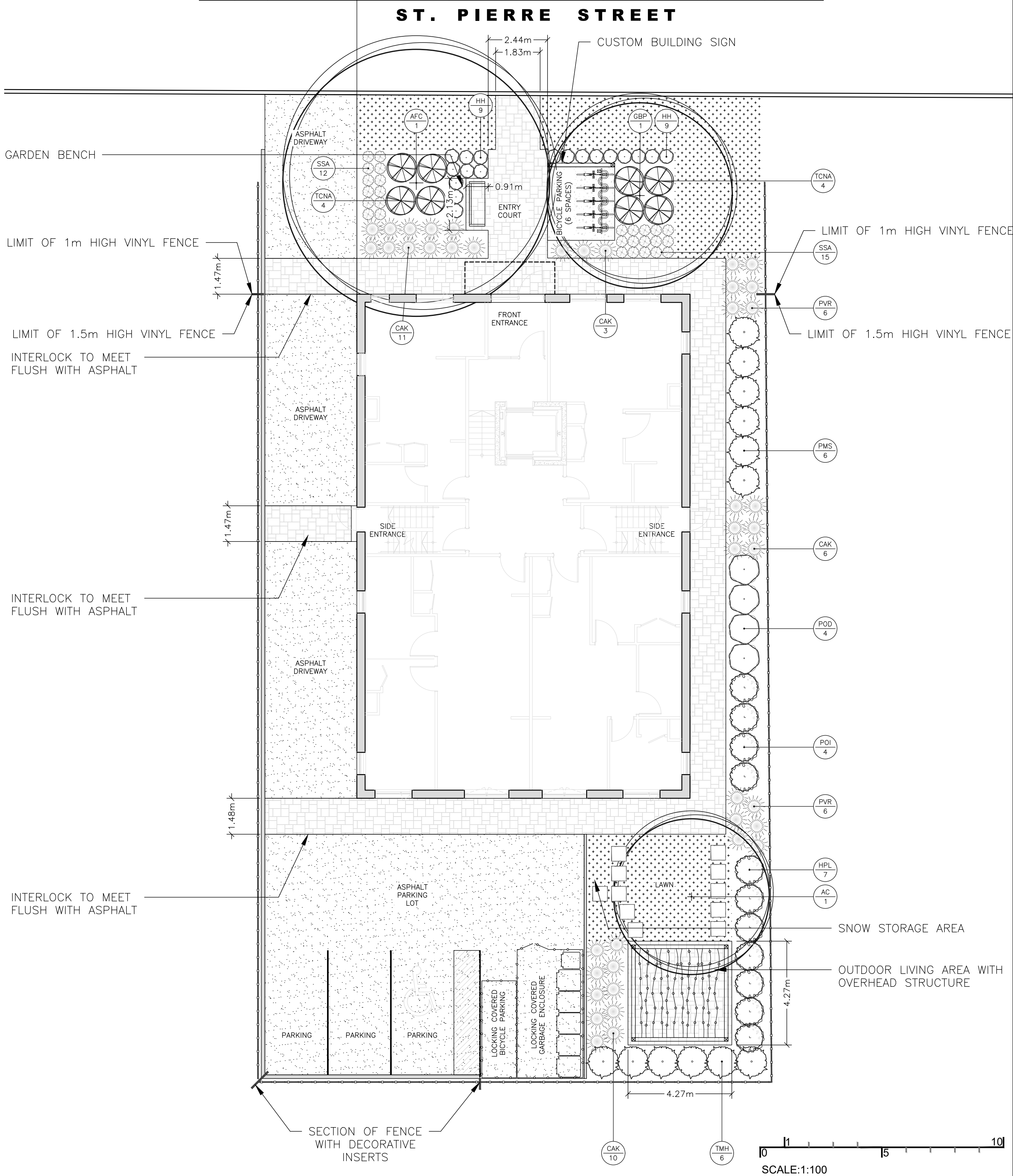
4 L.1 UNIT PAVING - PATIO & WALKWAYS n.t.s.



5 L.1 UNIT PAVING - DRIVEWAY n.t.s.



1132 St Pierre Street							18-Jul-24
Orleans ON							
Trees/Shrubs/Vines							
Key	Qty	Botanical Name	Common Name	Size	Cdn	Notes	Revisions
AC	1	Amelanchier x Grandiflora 'Autumn Brilliance'	Autumn Brilliance Serviceberry	50 mm cal	WB		
AFC	1	Acer x freemanii 'Celebration'	Celebration Maple	60 mm cal	WB		
GBP	1	Ginkgo biloba 'Princeton Sentry'	Princeton Sentry Maidenhair Tree	45mm cal	WB		
HPL	7	Hydrangea paniculata 'Little Lime '	Little Lime Hydrangea		3 gal pot		
PMS	6	Pinus mugo 'Slowmound'	Slowmound Mugho Pine	50 cm spr	5 galpot		
POD	4	Physocarpus opulifolius 'Darts Gold'	Dart's Gold Ninebark	60 cm ht	3 gal pot		
POT	4	Physocarpus opulifolius 'Tiny Wine'	Tiny Wine Ninebark	60 cm ht	3 gal pot		
TCNA	8	Taxus cuspidata 'Nana Aurescens'	Dwarf Golden Japanese Yew		2 gal pot		
TMH	6	Taxus x media 'Hilli'	Hilli's Yew	60 cm	7 gal		
Perennials/Grasses/Groundcovers							
Key	No	Botanical Name	Common Name	Size	Cdn	Notes	Revisions
CAK	30	Calamagrostis acutifolia 'Karl Forester'	Feather Reed Grass		1 gal pot	plant 32" o.c.	
HH	18	Hemerocallis x 'Stella D'oro'	Stella D'oro Hybrid Daylily		1 gal pot	plant 18" o.c.	
PVH	12	Panicum virgatum 'Heavy Metal'	Switch Grass		1 gal pot	plant 36" o.c.	
SSA	27	Sedum spectabilis 'Matrona'	Matrona Sedum		1 gal pot	plant 18" o.c.	



- LEGEND
- PROPOSED DECIDUOUS TREE
 - PROPOSED SHRUBS
 - PROPOSED PERENNIALS
 - PROPOSED GRASSES
 - LAWN AREA
 - INTERLOCKING PAVERS
 - ASPHALT
 - STEPPING STONES
 - NEW VINYL FENCE
 - PROPERTY LINE
 - BICYCLE PARKING

No.	Date	Revision note
1	July 18/24	Issued for review

John K. Szczepaniak
LANDSCAPE ARCHITECT
BIAWA/CALA
tel: (613) 731-2777 fax: (613)731-6989
e-mail: jszla@rogers.com

ISSUED FOR
DISCUSSION ONLY

1132 St. Pierre
1132 St. Pierre,
Ottawa, ON

Landscape Plan

CHK: JKS
DRW: EK
DATE: July 08, 2024
ID: 2024-03
SCALE: 1:100

L1