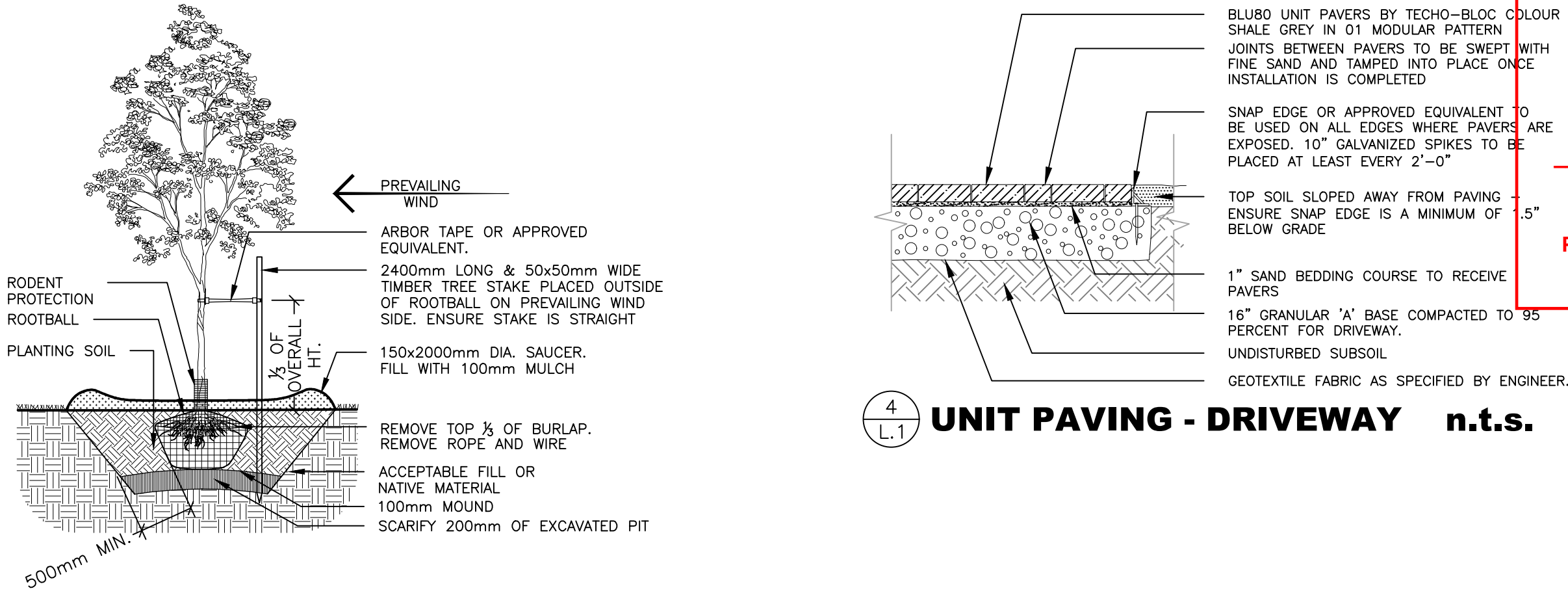
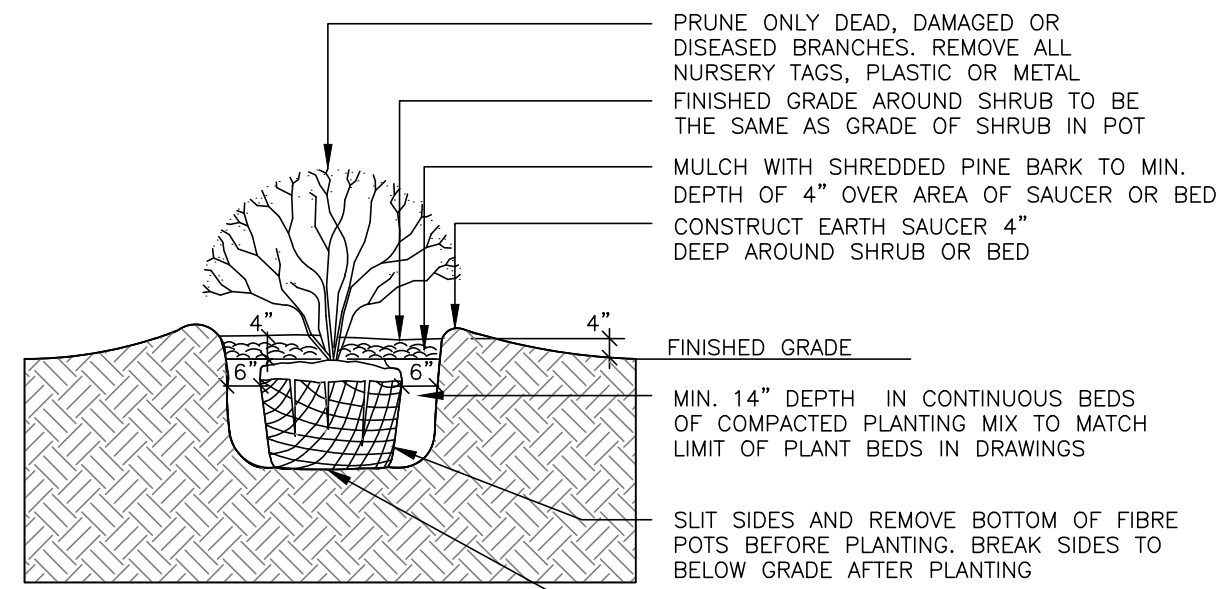


2024-03 MEMOR 1132 ST PIERRE 2025-08-13.DWG ISSUED ON August 13, 2025 2:17:25 PM

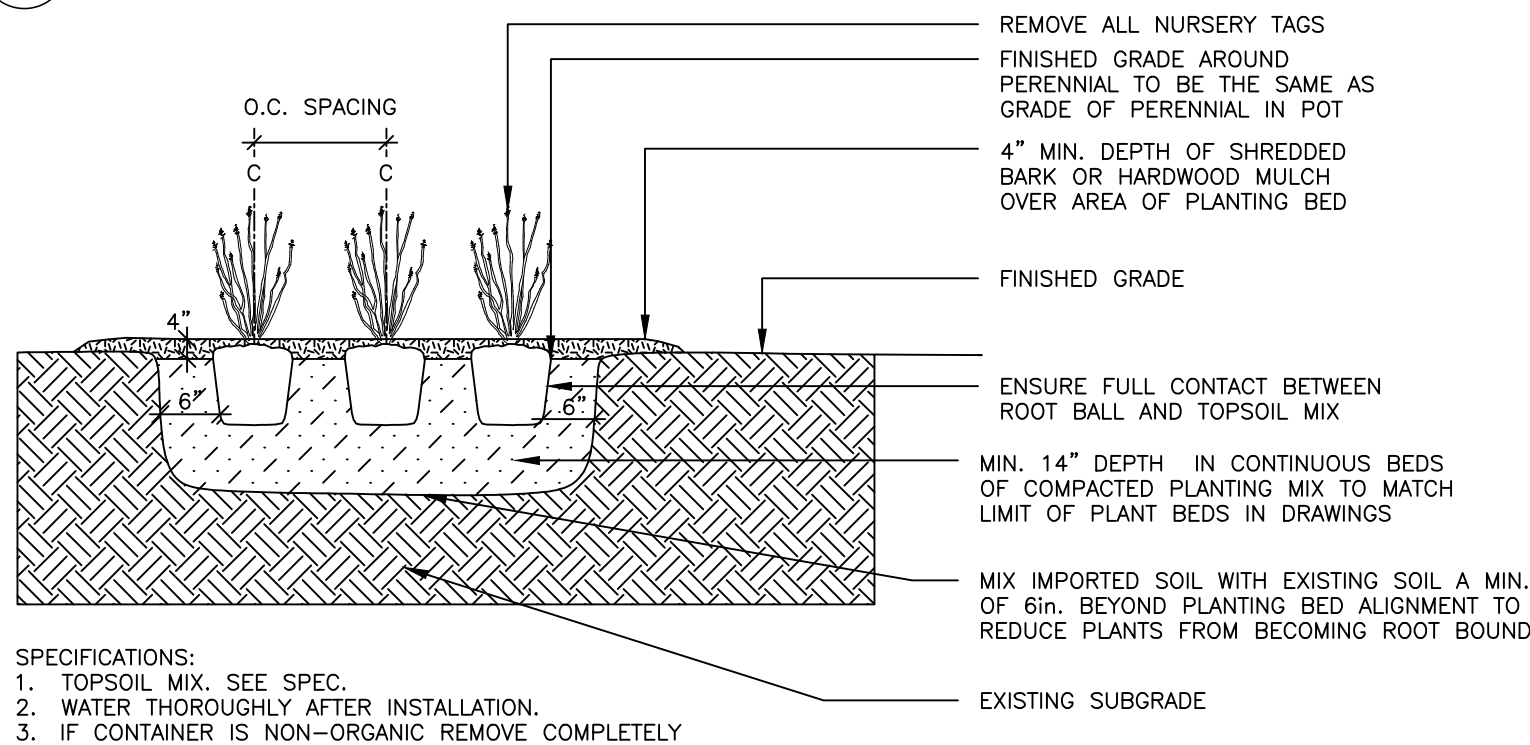


1 L.1 DECIDUOUS TREE PLANTING n.t.s.



- SPECIFICATIONS:
1. TOPSOIL MIX, SEE SPEC.
 2. SYNTHETIC BURLAP IS NOT ALLOWED.
 3. WATER THOROUGHLY AFTER INSTALLATION.
 4. CUT & REMOVE TOP 1/3 OF ROPE AND BURLAP FROM ROOT BALL. IF CONTAINER IS NON-ORGANIC REMOVE COMPLETELY.
 5. SCARIFY SUBGRADE PIT BOTTOM AND SIDES TO MIN. 6\"/>

1 L.1 SHRUB PLANTING n.t.s.



- SPECIFICATIONS:
1. TOPSOIL MIX, SEE SPEC.
 2. WATER THOROUGHLY AFTER INSTALLATION.
 3. IF CONTAINER IS NON-ORGANIC REMOVE COMPLETELY.

2 L.1 PERENNIAL & ORNAMENTAL GRASS PLANTING n.t.s.

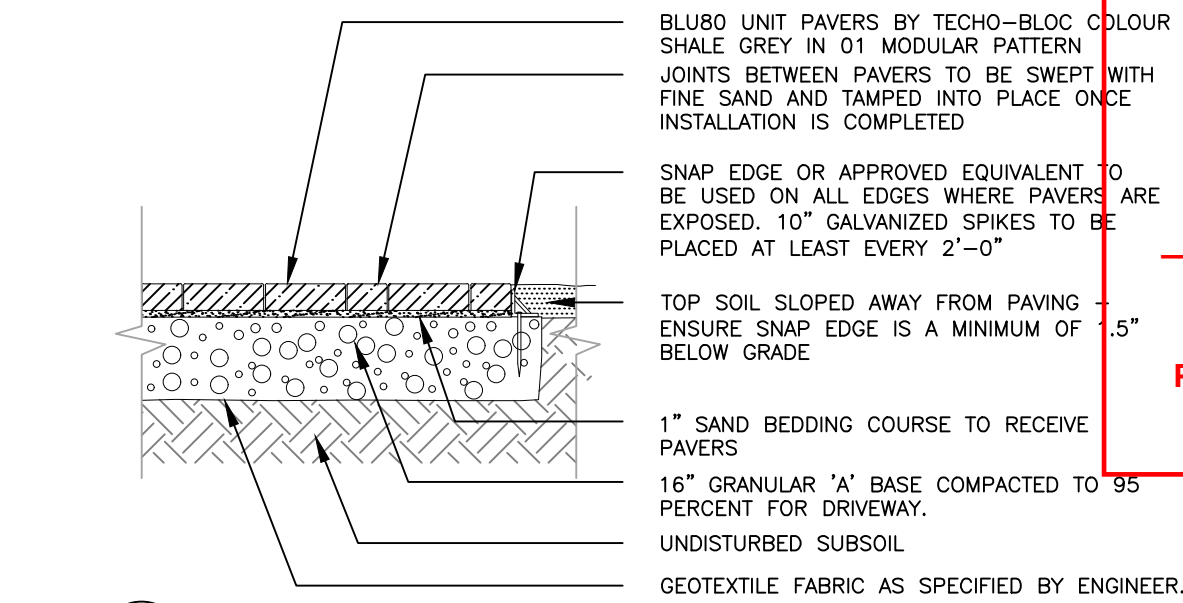
40 YEAR CANOPY CALCULATION:

Site Area:	791 m ²
Retention Contribution:	0 m ² (no existing trees retained).
Planted Tree Contribution:	Number planted: 3 small-sized deciduous tree
Canopy area contribution:	52.90 m ²
Percentage Canopy Cover:	52.90/791*100 = 6.68%

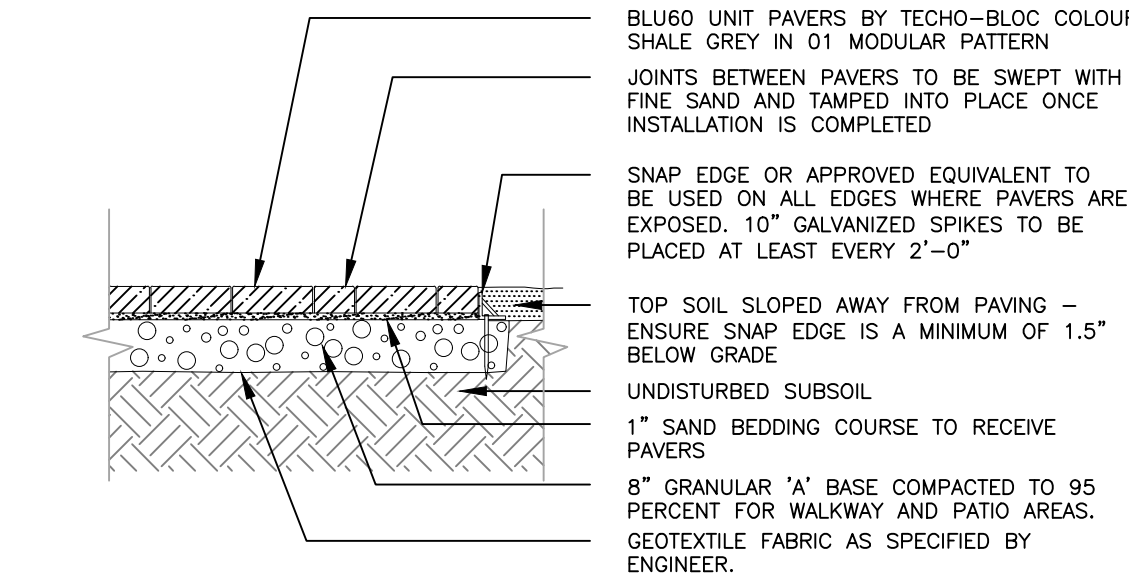
Tree planting opportunities are limited on site due to the presence of Marine Clay Soil.



BACKYARD LOUNGE AREA



4 L.1 UNIT PAVING - DRIVEWAY n.t.s.



3 L.1 UNIT PAVING - PATIO & WALKWAYS n.t.s.

JOHN SEVIGNY C.E.T.
MANAGER (A), DEVELOPMENT REVIEW EAST
PLANNING, DEVELOPMENT & BUILDING SERVICES
DEPARTMENT, CITY OF OTTAWA

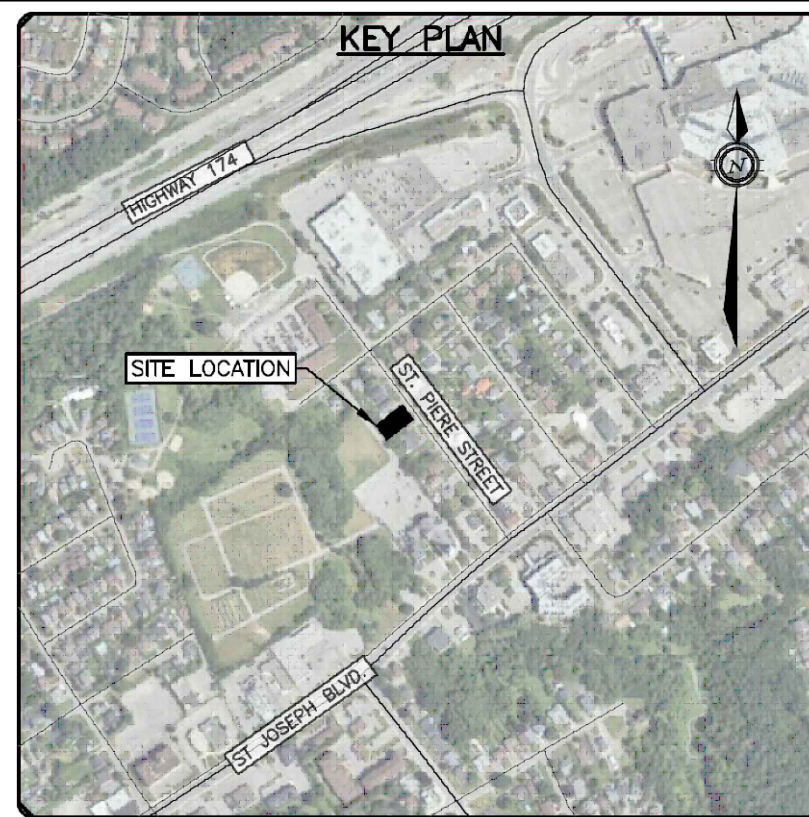
APPROVED
By sevignyjo at 10:33 am, Aug 22, 2025

Plant List 1132 St Pierre Street (on private property)										13-Aug-25
Orleans ON										
Trees										
Key	Qty	Botanical Name	Common Name	Size	Cdn	Notes	Ultimate size			
AC	2	Amelanchier canadensis	Serviceberry	45mm	WB	small tree	6m ht 4m spr			
Shrubs										
Key	Qty	Botanical Name	Common Name	Size	Cdn	Notes				
PMS	6	Pinus mugo 'Slowmound'	Slowmound Mugo Pine	50 cm spr	5	galpot				
RO	7	Rubus odoratus	Flowering Raspberry	2 gal pot		plant 5' o.c.				
POS	3	Physocarpus opulifolius 'Summerwine Ninebark'	Summerwine Ninebark	3gal pot		shrub				
Perennials/Grasses/Groundcovers										
Key	No	Botanical Name	Common Name	Size	Cdn	Notes	Revisions			
CAK	21	Callimargosia acutifolia 'Karl Forester'	Feather Reed Grass	1 gal pot		plant 24" o.c.				
HBW	7	Hosta Blue Wedgewood	Wedgewood Hosta	1 gal pot		plant 24" o.c.				

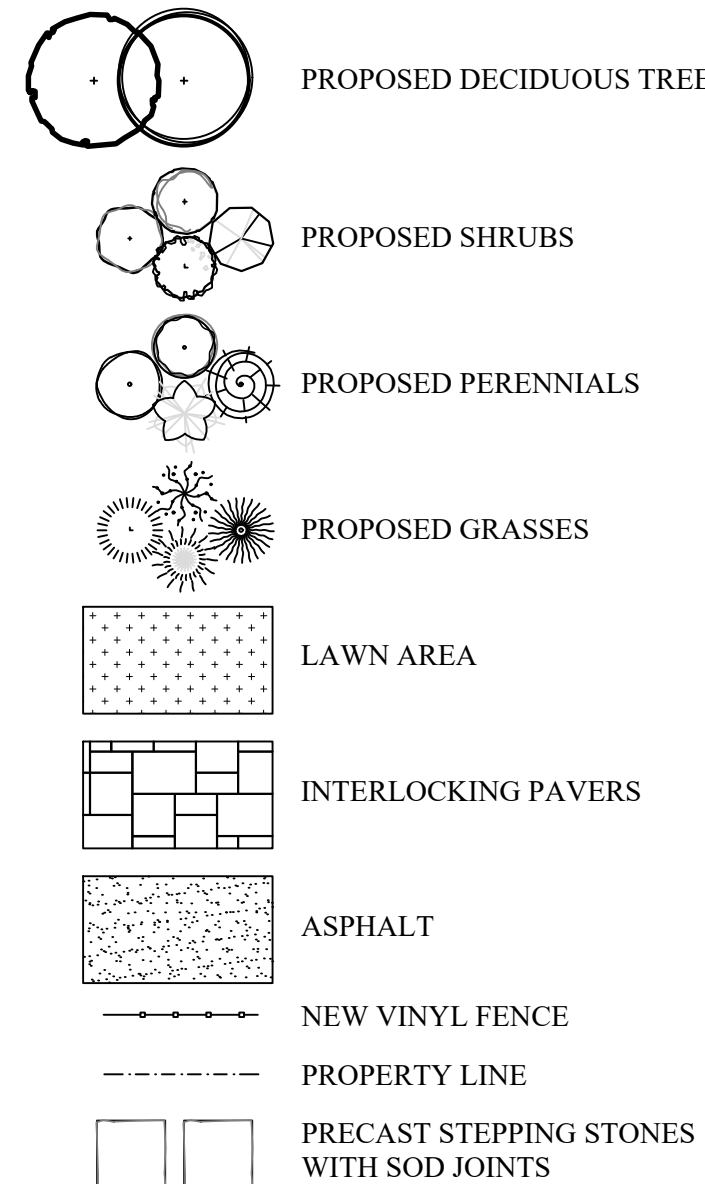
Plant List 1132 St Pierre Street (on city property)
Orleans ON 13-Aug-25

Trees		Key	Qty	Botanical Name	Common Name	Size	Cdn	Notes	Ultimate size
		SR	1	Syringa reticulata 'Ivory Silk'	Ivory Silk Lilac Tree	45mm	WB & HB	small tree	7.5m ht 6m spr

* indicates native plant material
** mature tree canopy as referenced from www.nvknurseries.com
*** WB & HB indicates in a wire basket and high branched



LEGEND



(L+D) LALANDE & BOYLE ARCHITECTS INC.
www.lplusd.com
Tel: 613.233.2800
Fax: 613.233.6008
159 Holland Ave
Ottawa, Ontario K1V 0Y2

Jain
7405 East Danbro Crescent, 2nd Floor
Mississauga, Ontario, L5N 6P8
Tel: 905 285 9900, Fax: 905 567 5246
Email: jmail@jainconsultants.com

exp. EXP SERVICES INC.
1-877-668-1881 / 416-225-0500
200 Catherine St. Unit 105
Ottawa, ON K2E 0H6
Canada

ENTUITIVE
135 Laurier Avenue West, Suite 518
Ottawa, ON K1P 5J2
t: 343 308 9274

No.	Date	Revision note
15	Aug 13/25	Tree added to R.O.W. requested by City
14	July 24/25	Enlarged bicycle storage updated
13	May 21/25	Planting adjusted in front of building
12	May 15/25	Updates as per eng. dwgs.
11	April 16/25	Rear parking layout updated
10	Mar 04/25	Bench and sign at entry removed
9	Jan 14/25	Trees in rear garden revised
8	Dec 10/24	Issued for re-submission
7	Dec 09/24	Tree coverage calculation added
6	Dec 06/24	Updates to amenities area
5	Oct 31/24	Updates to planting
4	Oct 25/24	Updates to parking area

John K. Szczepaniak
LANDSCAPE ARCHITECT
B.L.A. (O.A.A.)
tel: (613) 731-2777 fax: (613) 731-6989
e-mail: jszka@rogers.com

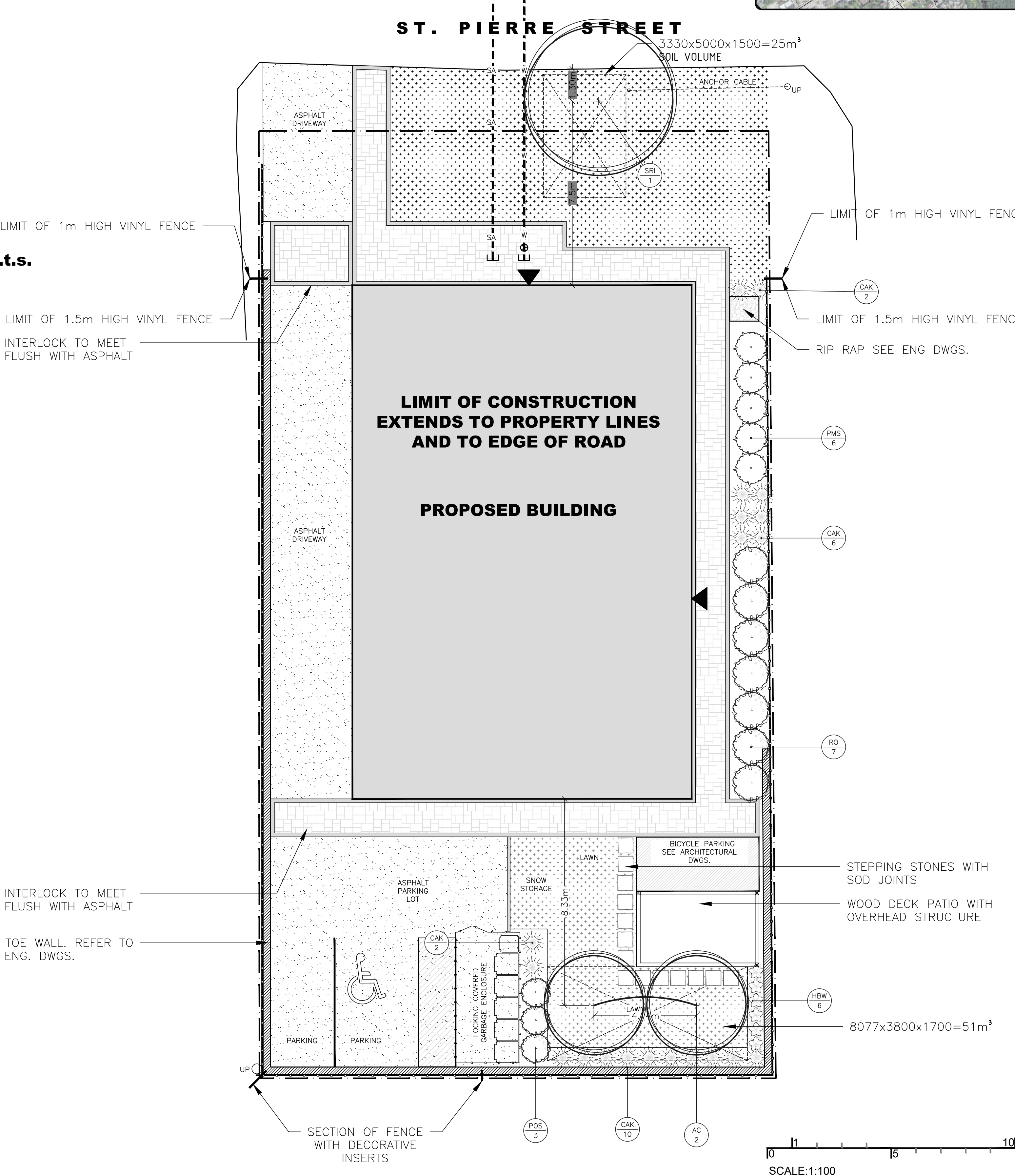


Pulse Societies LTD.
Orleans Development - PRR
1132 St. Pierre,
Ottawa, ON - K1C 1L5

Landscape Plan

CHK: JKS
DRW: EK
DATE: July 08, 2024
ID: 2024-03
SCALE: 1:100

L1



GENERAL NOTES

1. THIS PLAN WAS PREPARED IN CONJUNCTION WITH THE GEOTECHNICAL INVESTIGATION FINAL REPORT PREPARED BY EXP SERVICES INC. DATED 2025-02-21.
2. THIS DRAWING TO BE READ IN CONJUNCTION WITH ARCHITECTURAL DRAWINGS AND OTHER CONSULTANTS DRAWINGS. SPECIFICALLY REFER TO THE TREE CONSERVATION REPORT PREPARED BY DENDRON, GRADING AND SERVICES PLAN AS WELL AS GEO-TECHNICAL INVESTIGATION REPORT ALL PREPARED BY EXP SERVICES INC.
3. IT IS THE RESPONSIBILITY OF THE APPROPRIATE CONTRACTOR OR OFFICIAL TO REPORT ANY ERRORS, OMISSIONS OR DISCREPANCIES IN THIS PLAN WITH ACTUAL CONDITIONS OR OTHER CONSULTANT PLANS PRIOR TO COMMENCING WORK. THE LANDSCAPE ARCHITECT IS NOT RESPONSIBLE FOR SUBSURFACE CONDITIONS.
4. IT IS THE RESPONSIBILITY OF THE APPROPRIATE CONTRACTOR TO OBTAIN ALL REQUIRED PERMITS AND TO OBEY ALL LOCAL BYLAWS AND REGULATIONS.
5. IT IS THE RESPONSIBILITY OF THE APPROPRIATE CONTRACTOR TO DETERMINE THE LOCATION OF ALL UNDERGROUND SERVICES BEFORE THE START TO INCLUDE: TELEPHONE CABLES, CABLE TELEVISION, HYDRO CABLES, LIGHTS AND POWER LINES, WEEPING TILES, STORM AND SANITARY SEWERS, NATURAL GAS LINES, IRRIGATION LINES, ETC.
6. THE CONTRACTOR IS TO REINSTATE ALL AREAS AND ITEMS DAMAGED AS A RESULT OF CONSTRUCTION ACTIVITIES.
7. PLANT SUBSTITUTIONS WILL NOT BE ACCEPTED WITHOUT PRIOR APPROVAL OF THE LANDSCAPE ARCHITECT IN WRITING.
8. POSITIVE DRAINAGE TO BE MAINTAINED AT ALL TIMES AWAY FROM THE BUILDING. THIS DRAWING NOT TO BE USED FOR GRADING, REFER TO ENGINEER'S DRAWING FOR GRADING.
9. BASE INFORMATION FOR THIS PLAN WAS PREPARED USING THE SURVEY PLAN PREPARED BY ANNIS O'SULLIVAN VOLLEBECK LTD. DATED JUNE 7, 2023.

DESIGNED BY: REPRESENTATIVE OF SERVICE AND THE EXISTENCE
PROPERTY OF THE LANDSCAPE ARCHITECT AND PROTECTED BY
COPYRIGHT. UNAUTHORIZED USE IS PROHIBITED.

FILE NUMBER D07-12-24-0080 / PLAN NUMBER 19277