



© Copyright of BBB Architects Toronto Inc. 2024.
 Not to be reproduced or distributed without written
 authorization of the copyright owner.
 DATE PLOTTED:



**BRISBROOK
 BROOK
 BEYNON**
ARCHITECTS
 14 DUNCAN ST 4TH FLOOR
 TORONTO, ON M5H 3G8
 (416) 591-8999 ARCHITECT

ENTUITIVE
 135 LAURIER AVE WEST, SUITE 413
 OTTAWA, ON K1P 5J2
 (343) 308-9274
 STRUCTURAL ENGINEER

TMP
 200 KING ST. WEST, SUITE 310
 TORONTO, ON M5H 3T4
 (416) 499-8000
 MECH, PLUMB, FIRE PROTECTION ENGINEER

MULVEY & BANANI
 90 SHEPPARD AVE. EAST, SUITE 500
 TORONTO, ON M2N 3A
 (416) 751-2520
 ELEC, LIGHTING ENGINEER

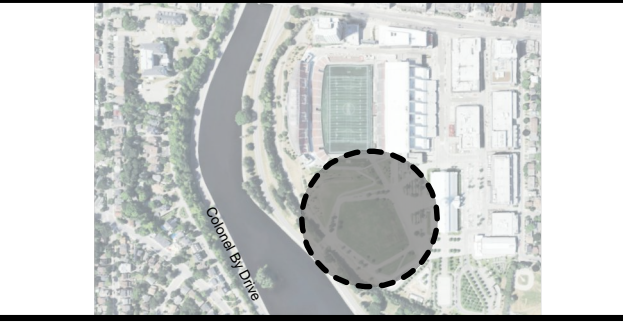
C S W
 319 MCRAE AVENUE, SUITE 502
 OTTAWA, ONTARIO K1Z 0B9
 (613) 729-4536
 LANDSCAPE ARCHITECT

KAIZEN
 UNIT 14, 1525 CORNWALL RD.
 OAKVILLE, ON L6J 0B2
 (905) 338-3222
 F&B CONSULTANT

NO.	DESCRIPTION	DATE
6	ISSUED FOR CITY SPA COMMENTS	15 JAN 2024
5	CD RELEASE	23 DEC 2023
4	ISSUED FOR SPA DD	19 NOV 2023
3	ISSUED FOR CITY SPA COMMENTS	06 SEP 2023
2	ISSUED FOR SPA	07 AUG 2023
1	ISSUED FOR PRE-CONSULTATION	31 MAY 2023

REVISIONS/ ISSUES	

CONTRACTOR SHALL CHECK AND VERIFY ALL DIMENSIONS AND REPORT ANY OMISSIONS OR DISCREPANCIES TO THE ARCHITECT BEFORE PROCEEDING WITH THE WORK.
DO NOT SCALE THE DRAWINGS



SEAL THIS DOCUMENT IS RELEASED FOR THE PURPOSE OF PRELIMINARY SUBMITTAL



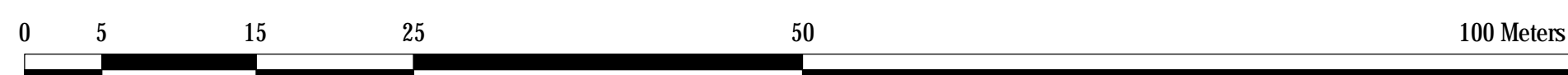
IT IS NOT TO BE USED FOR CONSTRUCTION PURPOSES

DRAWN	
DATE	
CHECKED	

LANSDOWNE 2.0
EVENT CENTRE,
NORTH SIDE STANDS AND
PUBLIC REALM
ENHANCEMENTS
 945 & 1015 BANK STREET

DWG. TITLE
TREE CONSERVATION REPORT
EXISTING CONDITION

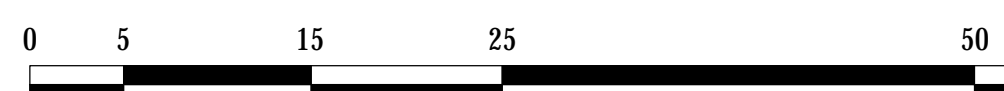
1 : 400 DWG. NO.
 PROJ. NO. CSW #1766-12 EC-TCR 1.0
 FILE NO. D07-24-0082
 PLAN # 19172





- LEGEND:
- CRITICAL ROOT ZONE (CRZ)
 - TREE TO BE REMOVED
 - TREE PROTECTION
 - LIMIT OF WORK

NOTE: SOME TREES MAY BE SUITABLE FOR TRANSPLANTING, (TO BE REVIEWED THROUGH DETAILED DESIGN DEVELOPMENT)



BRISBROOK ARCHITECTS
 BRISBROOK ARCHITECTS
 14 DUNCAN ST 4TH FLOOR
 TORONTO, ON M5H 3G8
 (416) 591-8999

ENTUITIVE
 135 LAURIER AVE WEST, SUITE 413
 OTTAWA, ON K1P 5J2
 (343) 308-9274

TMP
 200 KING ST. WEST, SUITE 310
 TORONTO, ON M5H 3T4
 (416) 499-8000
 MECH, PLUMB, FIRE PROTECTION ENGINEER

MULVEY & BANANI
 90 SHEPPARD AVE. EAST, SUITE 500
 TORONTO, ON M2N 3A
 (416) 751-2520
 ELEC. LIGHTING ENGINEER

C S W
 319 MCRAE AVENUE, SUITE 502
 OTTAWA, ONTARIO K1Z 0B9
 (613) 729-4536
 LANDSCAPE ARCHITECT

KAIZEN
 UNIT 14, 1525 CORNWALL RD.
 OAKVILLE, ON L6J 0B2
 (905) 338-3222
 F&B CONSULTANT

NO.	DESCRIPTION	DATE
6	ISSUED FOR CITY SPA COMMENTS	15 JAN 2024
5	CD RELEASE	23 DEC 2023
4	ISSUED FOR SPA DD	19 NOV 2023
3	ISSUED FOR CITY SPA COMMENTS	06 SEP 2023
2	ISSUED FOR SPA	07 AUG 2023
1	ISSUED FOR PRE-CONSULTATION	31 MAY 2023

REVISIONS/ ISSUES
 CONTRACTOR SHALL CHECK AND VERIFY ALL DIMENSIONS AND REPORT ANY OMISSIONS OR DISCREPANCIES TO THE ARCHITECT BEFORE PROCEEDING WITH THE WORK.
DO NOT SCALE THE DRAWINGS



SEAL THIS DOCUMENT IS RELEASED FOR THE PURPOSE OF PRELIMINARY SUBMITTAL



IT IS NOT TO BE USED FOR CONSTRUCTION PURPOSES

DRAWN _____
 DATE _____
 CHECKED _____

LANSDOWNE 2.0
 EVENT CENTRE,
 NORTH SIDE STANDS AND
 PUBLIC REALM
 ENHANCEMENTS
 945 & 1015 BANK STREET

DWG. TITLE
**TREE CONSERVATION REPORT
 PROPOSED DEVELOPMENT**

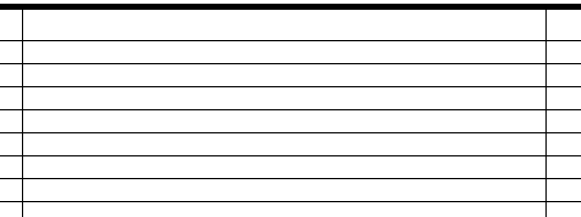
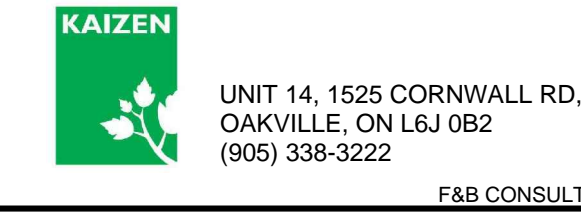
1 : 400
 PROJ. NO. CSW #1766-12
 DWG. NO. EC-TCR 1.1
 FILE NO. D07-24-0082
 PLAN # 19172

© Copyright of BBB Architects Toronto Inc. 2024.
 Not to be reproduced or distributed without written authorization of the copyright owner.
 DATE PLOTTED:

Area/ Number	Botanical Name	Common Name	DBH	Condition	Arborist notes	Arborist Recommendation	Removal Reason
						REMOVE / REMAIN	Construction conflict/ hazard/
1	<i>Acer saccharum</i>	Sugar Maple	16	Good		REMOVE	CONSTRUCTION CONFLICT
2	<i>Pinus nigra</i>	Austrian Pine	13.5	Good		REMOVE	CONSTRUCTION CONFLICT
3	<i>Amelanchier canadensis</i>	Serviceberry	10	Moderate	Asymmetrical with 10% canopy dieback.	REMOVE	CONSTRUCTION CONFLICT
4	<i>Pinus banksiana</i>	Jack Pine	14.5	Good		REMOVE	CONSTRUCTION CONFLICT
5	<i>Celtis occidentalis</i>	Hackberry	10.5	Moderate	Some die back of the upper canopy. About 5%	REMOVE	CONSTRUCTION CONFLICT
6	<i>Populus deltoides</i>	Bigtooth Aspen	25.5	Good		REMOVE	CONSTRUCTION CONFLICT
7	<i>Populus deltoides</i>	Bigtooth Aspen	19.5	Good		REMOVE	CONSTRUCTION CONFLICT
8	<i>Populus deltoides</i>	Bigtooth Aspen	29	Good		REMOVE	CONSTRUCTION CONFLICT
9	<i>Populus deltoides</i>	Bigtooth Aspen	29	Moderate		REMOVE	CONSTRUCTION CONFLICT
10	<i>Populus deltoides</i>	Bigtooth Aspen	23	Moderate		REMOVE	CONSTRUCTION CONFLICT
11	<i>Populus deltoides</i>	Bigtooth Aspen	20	Good		REMOVE	CONSTRUCTION CONFLICT
12	<i>Populus deltoides</i>	Bigtooth Aspen	24	Good		REMOVE	CONSTRUCTION CONFLICT
13	<i>Populus deltoides</i>	Bigtooth Aspen	23	Good		REMOVE	CONSTRUCTION CONFLICT
14	<i>Populus deltoides</i>	Bigtooth Aspen	25.5	Good		REMOVE	CONSTRUCTION CONFLICT
15	<i>Populus deltoides</i>	Bigtooth Aspen	23.5	Poor	Bark has turned black, about 40% canopy dieback and some severe pruning evident	REMOVE	CONSTRUCTION CONFLICT
16	<i>Populus deltoides</i>	Bigtooth Aspen	25.5	Good		REMOVE	CONSTRUCTION CONFLICT
17	<i>Populus deltoides</i>	Bigtooth Aspen	27	Moderate		REMOVE	CONSTRUCTION CONFLICT
18	<i>Populus deltoides</i>	Bigtooth Aspen	26.5	Good		REMOVE	CONSTRUCTION CONFLICT
19	<i>Populus deltoides</i>	Bigtooth Aspen	22	Good		REMOVE	CONSTRUCTION CONFLICT
20	<i>Acer saccharinum</i>	Silver Maple	18	Poor	40% canopy dieback, and evidence of pruning.	REMOVE	CONSTRUCTION CONFLICT
21	<i>Celtis occidentalis</i>	Hackberry	9.5	Moderate	10% canopy dieback, some broken limbs and evidence of pruning.	REMOVE	CONSTRUCTION CONFLICT
22	<i>Acer saccharum</i>	Sugar Maple	18	Good		REMOVE	CONSTRUCTION CONFLICT
23	<i>Celtis occidentalis</i>	Hackberry	15.5	Moderate	Frost crack and included back along truck of tree.	REMOVE	CONSTRUCTION CONFLICT
24	<i>Quercus alba</i>	White Oak	23	Moderate	10% canopy dieback	REMOVE	CONSTRUCTION CONFLICT
25	<i>Acer saccharum</i>	Sugar Maple	21	Good		REMOVE	CONSTRUCTION CONFLICT
26	<i>Aesculus glabra</i>	Ohio Buckeye	26	Good		REMOVE	CONSTRUCTION CONFLICT
27	<i>Acer saccharum</i>	Sugar Maple	27.5	Good		REMOVE	CONSTRUCTION CONFLICT
28	<i>Gymnocladus dioica</i>	Kentucky Coffee Tree	15	Moderate	Some minor canopy dieback	REMOVE	CONSTRUCTION CONFLICT
29	<i>Juglans nigra</i>	Black Walnut	24.5	Good		REMOVE	CONSTRUCTION CONFLICT
30	<i>Gymnocladus dioica</i>	Kentucky Coffee Tree	5.5	Poor	50% canopy dieback and limited overall growth. Some broken limbs	REMOVE	CONSTRUCTION CONFLICT
31	<i>Celtis occidentalis</i>	Hackberry	15	Good		REMOVE	CONSTRUCTION CONFLICT
32	<i>Amelanchier canadensis</i>	Serviceberry	10	Good		REMOVE	CONSTRUCTION CONFLICT
33	<i>Celtis occidentalis</i>	Hackberry	9.5	Good		REMOVE	CONSTRUCTION CONFLICT
34	<i>Acer platanoides "Columnare"</i>	Columnar Norway Maple	15	Good		REMOVE	CONSTRUCTION CONFLICT
35	<i>Picea mariana</i>	Black Spruce	13	Good		REMOVE	CONSTRUCTION CONFLICT
36	<i>Pinus banksiana</i>	Jack Pine	11	Good		REMOVE	CONSTRUCTION CONFLICT
37	<i>Thuja occidentalis</i>	Eastern-white Cedar	9	Good		REMOVE	CONSTRUCTION CONFLICT
38	<i>Amelanchier canadensis</i>	Serviceberry	9	Moderate	Decay on trunk with some cavities. Damage to leader.	REMOVE	CONSTRUCTION CONFLICT
39	<i>Betula papyrifera</i>	Paper bark Birch	11	Good		REMOVE	CONSTRUCTION CONFLICT
40	<i>Pinus banksiana</i>	Jack Pine	15	Good		REMOVE	CONSTRUCTION CONFLICT
41	<i>Larix laricina</i>	Tamarack	20	Good		REMOVE	CONSTRUCTION CONFLICT
42	<i>Thuja occidentalis</i>	Eastern-white Cedar	15	Good		REMOVE	CONSTRUCTION CONFLICT
43	<i>Cornus alternifolia</i>	Pagoda Dogwood	10	Moderate	Damage to bark on stem. No clear leader and deformed canopy	REMOVE	CONSTRUCTION CONFLICT
44	<i>Shrub- Rhus typhina</i>	Staghorn Sumac		Good	Male	REMOVE	CONSTRUCTION CONFLICT
45	<i>Gymnocladus dioica</i>	Kentucky Coffee Tree	15	Good		REMOVE	CONSTRUCTION CONFLICT
46	<i>Shrub- Rhus typhina</i>	Staghorn Sumac		Good	Male	REMOVE	CONSTRUCTION CONFLICT
47	<i>Thuja occidentalis</i>	Eastern-white Cedar	10	Good		REMOVE	CONSTRUCTION CONFLICT
48	<i>Picea mariana</i>	Black Spruce	12	Good		REMOVE	CONSTRUCTION CONFLICT
49	<i>Thuja occidentalis</i>	Eastern-white Cedar	8	Good		REMOVE	CONSTRUCTION CONFLICT
50	<i>Pinus banksiana</i>	Jack Pine	12	Good		REMOVE	CONSTRUCTION CONFLICT
51	<i>Betula papyrifera</i>	Paper bark Birch	14	Dead		REMOVE	CONSTRUCTION CONFLICT
52	<i>Picea mariana</i>	Black Spruce	12	Good		REMOVE	CONSTRUCTION CONFLICT
53	<i>Acer platanoides "Columnare"</i>	Columnar Norway Maple	19.5	Good		REMOVE	CONSTRUCTION CONFLICT
54	<i>Larix laricina</i>	Tamarack	16	Good		REMOVE	CONSTRUCTION CONFLICT
55	<i>Cornus alternifolia</i>	Pagoda Dogwood	8	Good		REMOVE	CONSTRUCTION CONFLICT
56	<i>Celtis occidentalis</i>	Hackberry	9.5	Good		REMOVE	CONSTRUCTION CONFLICT
57	TBD					Remain	CONSTRUCTION CONFLICT
58	TBD					Remain	CONSTRUCTION CONFLICT
59	<i>Acer platanoides "Columnare"</i>	Columnar Norway Maple	13.5	Good		REMOVE	CONSTRUCTION CONFLICT
60	<i>Celtis occidentalis</i>	Hackberry	12	Good		REMOVE	CONSTRUCTION CONFLICT
61	<i>Sorbus hybrida</i>	Oak-leaf Mountain Ash	6	Good		REMOVE	CONSTRUCTION CONFLICT
62	<i>Acer platanoides "Columnare"</i>	Columnar Norway Maple	15	Good		REMOVE	CONSTRUCTION CONFLICT
63	<i>Celtis occidentalis</i>	Hackberry	11	Good		REMOVE	CONSTRUCTION CONFLICT
64	<i>Thuja occidentalis</i>	Eastern-white Cedar	9	Moderate	Asymmetrical growth and about 20% dieback.	REMOVE	CONSTRUCTION CONFLICT
65	<i>Pinus strobus</i>	White Pine	9	Good		REMOVE	CONSTRUCTION CONFLICT
66	<i>Acer platanoides "Columnare"</i>	Columnar Norway Maple	16	Moderate	10-15% canopy dieback	REMOVE	CONSTRUCTION CONFLICT
67	<i>Pinus banksiana</i>	Jack Pine	10	Good		REMOVE	CONSTRUCTION CONFLICT
68	<i>Acer platanoides "Columnare"</i>	Columnar Norway Maple	17	Good		REMOVE	CONSTRUCTION CONFLICT
69	<i>Acer platanoides "Columnare"</i>	Columnar Norway Maple	21	Good		REMOVE	CONSTRUCTION CONFLICT
70	<i>Picea mariana</i>	Black Spruce	12	Good		REMOVE	CONSTRUCTION CONFLICT

71	<i>Thuja occidentalis</i>	Eastern-white Cedar	11	Good		REMOVE	CONSTRUCTION CONFLICT
72	<i>Tsuga canadensis</i>	Eastern Hemlock	7.5	Good		REMOVE	CONSTRUCTION CONFLICT
73	<i>Tsuga canadensis</i>	Eastern Hemlock	10	Good		REMOVE	CONSTRUCTION CONFLICT
74	<i>Acer saccharum</i>	Sugar Maple	5	Good		REMOVE	CONSTRUCTION CONFLICT
75	<i>Acer saccharum</i>	Sugar Maple	5	Good		REMOVE	CONSTRUCTION CONFLICT
76	<i>Acer platanoides "Columnare"</i>	Columnar Norway Maple	12	Poor	Included bark on trunk and canopy die-back (45%). Broken branches	REMOVE	CONSTRUCTION CONFLICT
77	<i>Betula papyrifera</i>	Paper bark Birch	5.5	Good		REMOVE	CONSTRUCTION CONFLICT
78	<i>Betula papyrifera</i>	Paper bark Birch	9	Missing		REMOVE	CONSTRUCTION CONFLICT
79	<i>Acer platanoides "Columnare"</i>	Columnar Norway Maple	13.5	Good		REMOVE	CONSTRUCTION CONFLICT
80	<i>Betula papyrifera</i>	Paper bark Birch	8	Good		REMOVE	CONSTRUCTION CONFLICT
81	<i>Picea mariana</i>	Black Spruce	8.5	Good		REMOVE	CONSTRUCTION CONFLICT
82	<i>Gymnocladus dioica</i>	Kentucky Coffee Tree	4	Poor	Limited growth and bud development	REMOVE	CONSTRUCTION CONFLICT
83	<i>Celtis occidentalis</i>	Hackberry	11.5	Moderate	Some upper canopy dieback (5-10%)	REMOVE	CONSTRUCTION CONFLICT
84	<i>Juglans nigra</i>	Black Walnut	18	Good		REMOVE	CONSTRUCTION CONFLICT
85	<i>Quercus robur</i>	Red Oak	21.5	Good		REMOVE	CONSTRUCTION CONFLICT
86	<i>Fagus sylvatica</i>	American Beech	20	Good		REMOVE	CONSTRUCTION CONFLICT
87	<i>Celtis occidentalis</i>	Hackberry	11.5	Good		REMOVE	CONSTRUCTION CONFLICT
88	<i>Acer platanoides "Columnare"</i>	Columnar Norway Maple	15	Poor	A small number of broken limbs and some decay of the bark along the trunk.	REMOVE	CONSTRUCTION CONFLICT
89	<i>Aesculus glabra</i>	Ohio Buckeye	22.5	Good		REMOVE	CONSTRUCTION CONFLICT
90	<i>Juglans nigra</i>	Black Walnut	20	Good		REMOVE	CONSTRUCTION CONFLICT
91	<i>Juglans nigra</i>	Black Walnut	20	Good		REMOVE	CONSTRUCTION CONFLICT
92	<i>Celtis occidentalis</i>	Hackberry	11	Good		REMOVE	CONSTRUCTION CONFLICT
93	<i>Acer platanoides "Columnare"</i>	Columnar Norway Maple	18	Good		REMOVE	CONSTRUCTION CONFLICT
94	<i>Picea mariana</i>	Black Spruce	22	Good		REMOVE	CONSTRUCTION CONFLICT
95	<i>Acer platanoides "Columnare"</i>	Columnar Norway Maple	6.5	Poor	Trunk is split.	REMOVE	CONSTRUCTION CONFLICT
96	<i>Celtis occidentalis</i>	Hackberry	8	Good		REMOVE	CONSTRUCTION CONFLICT
97	<i>Thuja occidentalis</i>	Eastern-white Cedar	12.5	Good		REMOVE	CONSTRUCTION CONFLICT
98	<i>Pinus strobus</i>	White Pine	12.5	Good		REMOVE	CONSTRUCTION CONFLICT
99	<i>Ostrya virginiana</i>	Ironwood	8.5	Good		REMOVE	CONSTRUCTION CONFLICT
100	<i>Betula papyrifera</i>	Paper bark Birch	6	Good		REMOVE	CONSTRUCTION CONFLICT
101	<i>Betula papyrifera</i>	Paper bark Birch	8.5	Good		REMOVE	CONSTRUCTION CONFLICT
102	<i>Amelanchier canadensis</i>	Serviceberry	10	Good		REMOVE	CONSTRUCTION CONFLICT
103	<i>Picea mariana</i>	Black Spruce	12	Good		REMOVE	CONSTRUCTION CONFLICT
104	<i>Amelanchier canadensis</i>	Serviceberry	10	Good		REMOVE	CONSTRUCTION CONFLICT
105	<i>Picea mariana</i>	Black Spruce	12	Good		REMOVE	CONSTRUCTION CONFLICT
106	<i>Amelanchier canadensis</i>	Serviceberry	10	Good		REMOVE	CONSTRUCTION CONFLICT
107	<i>Thuja occidentalis</i>	Eastern-white Cedar	12	Good		REMOVE	CONSTRUCTION CONFLICT
108	<i>Acer platanoides "Columnare"</i>	Columnar Norway Maple	18	Good		REMOVE	CONSTRUCTION CONFLICT
109	<i>Gymnocladus dioica</i>	Kentucky Coffee Tree	15.5	Good		REMOVE	CONSTRUCTION CONFLICT
110	<i>Gymnocladus dioica</i>	Kentucky Coffee Tree	17.5	Good		REMOVE	CONSTRUCTION CONFLICT
111	<i>Juglans nigra</i>	Black Walnut	23	Good		REMOVE	CONSTRUCTION CONFLICT
112	<i>Juglans nigra</i>	Black Walnut	25	Moderate	Some included bark along the trunk	REMOVE	CONSTRUCTION CONFLICT
113	<i>Quercus alba</i>	White Oak	26	Good		Remain	
114	<i>Celtis occidentalis</i>	Hackberry	18.5	Poor	Asymmetrical with poor growth patterns. Tree has been topped	REMOVE	Hazard
115	<i>Quercus robur</i>	Red Oak	23	Good		Remain	
116	<i>Aesculus glabra</i>	Ohio Buckeye	19.5	Good		Remain	
117	<i>Juglans nigra</i>	Black Walnut	15	Poor	Poor quality tree with about 90% canopy die back and some witches broom on branches.	REMOVE	Hazard
118	<i>Acer saccharinum</i>	Silver Maple	20	Good		REMOVE	CONSTRUCTION CONFLICT
119	<i>Picea mariana</i>	Black Spruce	10	Moderate	Asymmetrical with 5% die-back of lower branches. Some broken lower branches.	REMOVE	CONSTRUCTION CONFLICT
120	<i>Acer saccharum</i>	Sugar Maple	5	Good		Remain	
121	<i>Ostrya virginiana</i>	Ironwood	4	Good		Remain	
122	<i>Gymnocladus dioica</i>	Kentucky Coffee Tree	5	Good		Remove	
123	<i>Ostrya virginiana</i>	Ironwood	5	Good		REMOVE	CONSTRUCTION CONFLICT
124	<i>Ostrya virginiana</i>	Ironwood	5	Good		REMOVE	CONSTRUCTION CONFLICT

GENERAL NOTE:
ALL TREES INCLUDED IN THE SCHEDULE ABOVE
ARE CITY-OWNED TREES



NO.	DESCRIPTION	DATE
6	ISSUED FOR CITY SPA COMMENTS	15 JAN 2024
5	CD RELEASE	23 DEC 2024
4	ISSUED FOR SPA DD	15 NOV 2024
3	ISSUED FOR CITY SPA COMMENTS	06 SEP 2024
2	ISSUED FOR SPA	07 AUG 2024
1	ISSUED FOR PRE-CONSULTATION	31 MAY 2024

REVISIONS/ ISSUES

CONTRACTOR SHALL CHECK AND VERIFY ALL DIMENSIONS AND REPORT ANY OMISSIONS OR DISCREPANCIES TO THE ARCHITECT BEFORE PROCEEDING WITH THE WORK. DO NOT SCALE THE DRAWINGS



THIS DOCUMENT IS RELEASED FOR THE PURPOSE OF PRELIMINARY SUBMITTAL



IT IS NOT TO BE USED FOR CONSTRUCTION PURPOSES

DRAWN	
DATE	
CHECKED	

LANSDOWNE 2.0
EVENT CENTRE,
NORTH SIDE STANDS AND
PUBLIC REALM
ENHANCMENTS
945 & 1015 BANK STREET

DWG. TITLE

TREE CONSERVATION REPORT

N.T.S. DWG. NO.
PROJ. NO. EC-TCR 1.2
CSW #1766-12

DATE PLOTTED: FILE NO: D07-22-04-0082 PLAN # 19172