

PROJECT INFORMATION	
ENGINEERED PRODUCT MANAGER:	HAIDER NASRULLAH 647-850-9417 HAIDER.NASRULLAH@ADSPIPE.COM
ADS SALES REP:	BRAD DUNLOP 613-893-7336 BRAD.DUNLOP@ADSPIPE.COM
PROJECT NO:	S426399
ONTARIO SITE COORDINATOR:	RYAN RUBENSTEIN 519-710-3687 RYAN.RUBENSTEIN@ADSPIPE.COM



APPROVED  
By Andrew McCreight at 1:14 pm, May 26, 2025

# LANDSDOWNE 2.0

## OTTAWA, ON.

### MC-3500 STORMTECH CHAMBER SPECIFICATIONS

- CHAMBERS SHALL BE STORMTECH MC-3500.
- CHAMBERS SHALL BE ARCH-SHAPED AND SHALL BE MANUFACTURED FROM VIRGIN, IMPACT-MODIFIED POLYPROPYLENE COPOLYMERS.
- CHAMBERS SHALL BE CERTIFIED TO CSA B184, "POLYMERIC SUB-SURFACE STORMWATER MANAGEMENT STRUCTURES", AND MEET THE REQUIREMENTS OF ASTM F2418, "STANDARD SPECIFICATION FOR POLYPROPYLENE (PP) CORRUGATED WALL STORMWATER COLLECTION CHAMBERS" CHAMBER CLASSIFICATION 45x76 DESIGNATION SS.
- CHAMBER ROWS SHALL PROVIDE CONTINUOUS, UNOBSTRUCTED INTERNAL SPACE WITH NO INTERNAL SUPPORTS THAT WOULD IMPEDE FLOW OR LIMIT ACCESS FOR INSPECTION.
- THE STRUCTURAL DESIGN OF THE CHAMBERS, THE STRUCTURAL BACKFILL, AND THE INSTALLATION REQUIREMENTS SHALL ENSURE THAT THE LOAD FACTORS SPECIFIED IN THE AASHTO LRFD BRIDGE DESIGN SPECIFICATIONS, SECTION 12.12, ARE MET FOR: 1) LONG-DURATION DEAD LOADS AND 2) SHORT-DURATION LIVE LOADS, BASED ON THE CSA S6 CL-625 TRUCK AND THE AASHTO DESIGN TRUCK WITH CONSIDERATION FOR IMPACT AND MULTIPLE VEHICLE PRESENCES.
- CHAMBERS SHALL BE DESIGNED, TESTED AND ALLOWABLE LOAD CONFIGURATIONS DETERMINED IN ACCORDANCE WITH ASTM F2787, "STANDARD PRACTICE FOR STRUCTURAL DESIGN OF THERMOPLASTIC CORRUGATED WALL STORMWATER COLLECTION CHAMBERS". LOAD CONFIGURATIONS SHALL INCLUDE: 1) INSTANTANEOUS (<1 MIN) AASHTO DESIGN TRUCK LIVE LOAD ON MINIMUM COVER 2) MAXIMUM PERMANENT (75-YR) COVER LOAD AND 3) ALLOWABLE COVER WITH PARKED (1-WEEK) AASHTO DESIGN TRUCK.
- REQUIREMENTS FOR HANDLING AND INSTALLATION:
  - TO MAINTAIN THE WIDTH OF CHAMBERS DURING SHIPPING AND HANDLING, CHAMBERS SHALL HAVE INTEGRAL, INTERLOCKING STACKING LUGS.
  - TO ENSURE A SECURE JOINT DURING INSTALLATION AND BACKFILL, THE HEIGHT OF THE CHAMBER JOINT SHALL NOT BE LESS THAN 75 mm (3").
  - TO ENSURE THE INTEGRITY OF THE ARCH SHAPE DURING INSTALLATION, a) THE ARCH STIFFNESS CONSTANT SHALL BE GREATER THAN OR EQUAL TO 450 LBS/FT/%. THE ASC IS DEFINED IN SECTION 6.2.8 OF ASTM F2418. AND b) TO RESIST CHAMBER DEFORMATION DURING INSTALLATION AT ELEVATED TEMPERATURES (ABOVE 23° C / 73° F), CHAMBERS SHALL BE PRODUCED FROM REFLECTIVE GOLD OR YELLOW COLORS.
- ONLY CHAMBERS THAT ARE APPROVED BY THE SITE DESIGN ENGINEER WILL BE ALLOWED. UPON REQUEST BY THE SITE DESIGN ENGINEER OR OWNER, THE CHAMBER MANUFACTURER SHALL SUBMIT A STRUCTURAL EVALUATION FOR APPROVAL BEFORE DELIVERING CHAMBERS TO THE PROJECT SITE AS FOLLOWS:
  - THE STRUCTURAL EVALUATION SHALL BE SEALED BY A REGISTERED PROFESSIONAL ENGINEER.
  - THE STRUCTURAL EVALUATION SHALL DEMONSTRATE THAT THE SAFETY FACTORS ARE GREATER THAN OR EQUAL TO 1.95 FOR DEAD LOAD AND 1.75 FOR LIVE LOAD, THE MINIMUM REQUIRED BY ASTM F2787 AND BY SECTIONS 3 AND 12.12 OF THE AASHTO LRFD BRIDGE DESIGN SPECIFICATIONS FOR THERMOPLASTIC PIPE.
  - THE TEST DERIVED CREEP MODULUS AS SPECIFIED IN ASTM F2418 SHALL BE USED FOR PERMANENT DEAD LOAD DESIGN EXCEPT THAT IT SHALL BE THE 75-YEAR MODULUS USED FOR DESIGN.
- CHAMBERS AND END CAPS SHALL BE PRODUCED AT AN ISO 9001 CERTIFIED MANUFACTURING FACILITY.
- MANIFOLD SIZE TO BE DETERMINED BY SITE DESIGN ENGINEER. SEE TECHNICAL NOTE 6.32 FOR MANIFOLD SIZING GUIDANCE. DUE TO THE ADAPTATION OF THIS CHAMBER SYSTEM TO SPECIFIC SITE AND DESIGN CONSTRAINTS, IT MAY BE NECESSARY TO CUT AND COUPLE ADDITIONAL PIPE TO STANDARD MANIFOLD COMPONENTS IN THE FIELD.
- ADS DOES NOT DESIGN OR PROVIDE MEMBRANE LINER SYSTEMS. TO MINIMIZE THE LEAKAGE POTENTIAL OF LINER SYSTEMS, THE MEMBRANE LINER SYSTEM SHOULD BE DESIGNED BY A KNOWLEDGEABLE GEOTEXTILE PROFESSIONAL AND INSTALLED BY A QUALIFIED CONTRACTOR.

### IMPORTANT - NOTES FOR THE BIDDING AND INSTALLATION OF MC-3500 CHAMBER SYSTEM

- STORMTECH MC-3500 CHAMBERS SHALL NOT BE INSTALLED UNTIL THE MANUFACTURER'S REPRESENTATIVE HAS COMPLETED A PRE-CONSTRUCTION MEETING WITH THE INSTALLERS.
- STORMTECH MC-3500 CHAMBERS SHALL BE INSTALLED IN ACCORDANCE WITH THE "STORMTECH MC-3500/MC-4500 CONSTRUCTION GUIDE".
- CHAMBERS ARE NOT TO BE BACKFILLED WITH A DOZER OR AN EXCAVATOR SITUATED OVER THE CHAMBERS. STORMTECH RECOMMENDS 3 BACKFILL METHODS:
  - STONESHOOTER LOCATED OFF THE CHAMBER BED.
  - BACKFILL AS ROWS ARE BUILT USING AN EXCAVATOR ON THE FOUNDATION STONE OR SUBGRADE.
  - BACKFILL FROM OUTSIDE THE EXCAVATION USING A LONG BOOM HOE OR EXCAVATOR.
- THE FOUNDATION STONE SHALL BE LEVELED AND COMPACTED PRIOR TO PLACING CHAMBERS.
- JOINTS BETWEEN CHAMBERS SHALL BE PROPERLY SEATED PRIOR TO PLACING STONE.
- MAINTAIN MINIMUM - 230 mm (9") SPACING BETWEEN THE CHAMBER ROWS.
- INLET AND OUTLET MANIFOLDS MUST BE INSERTED A MINIMUM OF 300 mm (12") INTO CHAMBER END CAPS.
- EMBEDMENT STONE SURROUNDING CHAMBERS MUST BE A CLEAN, CRUSHED, ANGULAR STONE OR RECYCLED CONCRETE; AASHTO M43 #3, 357, 4, 467, 5, 56, OR 57.
- STONE MUST BE PLACED ON THE TOP CENTER OF THE CHAMBER TO ANCHOR THE CHAMBERS IN PLACE AND PRESERVE ROW SPACING.
- THE CONTRACTOR MUST REPORT ANY DISCREPANCIES WITH CHAMBER FOUNDATION MATERIALS BEARING CAPACITIES TO THE SITE DESIGN ENGINEER.
- ADS RECOMMENDS THE USE OF "FLEXSTORM CATCH IT" INSERTS DURING CONSTRUCTION FOR ALL INLETS TO PROTECT THE SUBSURFACE STORMWATER MANAGEMENT SYSTEM FROM CONSTRUCTION SITE RUNOFF.

### NOTES FOR CONSTRUCTION EQUIPMENT

- STORMTECH MC-3500 CHAMBERS SHALL BE INSTALLED IN ACCORDANCE WITH THE "STORMTECH MC-3500/MC-4500 CONSTRUCTION GUIDE".
- THE USE OF EQUIPMENT OVER MC-3500 CHAMBERS IS LIMITED:
  - NO EQUIPMENT IS ALLOWED ON BARE CHAMBERS.
  - NO RUBBER TIRED LOADER, DUMP TRUCK, OR EXCAVATORS ARE ALLOWED UNTIL PROPER FILL DEPTHS ARE REACHED IN ACCORDANCE WITH THE "STORMTECH MC-3500/MC-4500 CONSTRUCTION GUIDE".
  - WEIGHT LIMITS FOR CONSTRUCTION EQUIPMENT CAN BE FOUND IN THE "STORMTECH MC-3500/MC-4500 CONSTRUCTION GUIDE".
- FULL 900 mm (36") OF STABILIZED COVER MATERIALS OVER THE CHAMBERS IS REQUIRED FOR DUMP TRUCK TRAVEL OR DUMPING.

**USE OF A DOZER TO PUSH EMBEDMENT STONE BETWEEN THE ROWS OF CHAMBERS MAY CAUSE DAMAGE TO CHAMBERS AND IS NOT AN ACCEPTABLE BACKFILL METHOD. ANY CHAMBERS DAMAGED BY USING THE "DUMP AND PUSH" METHOD ARE NOT COVERED UNDER THE STORMTECH STANDARD WARRANTY.**

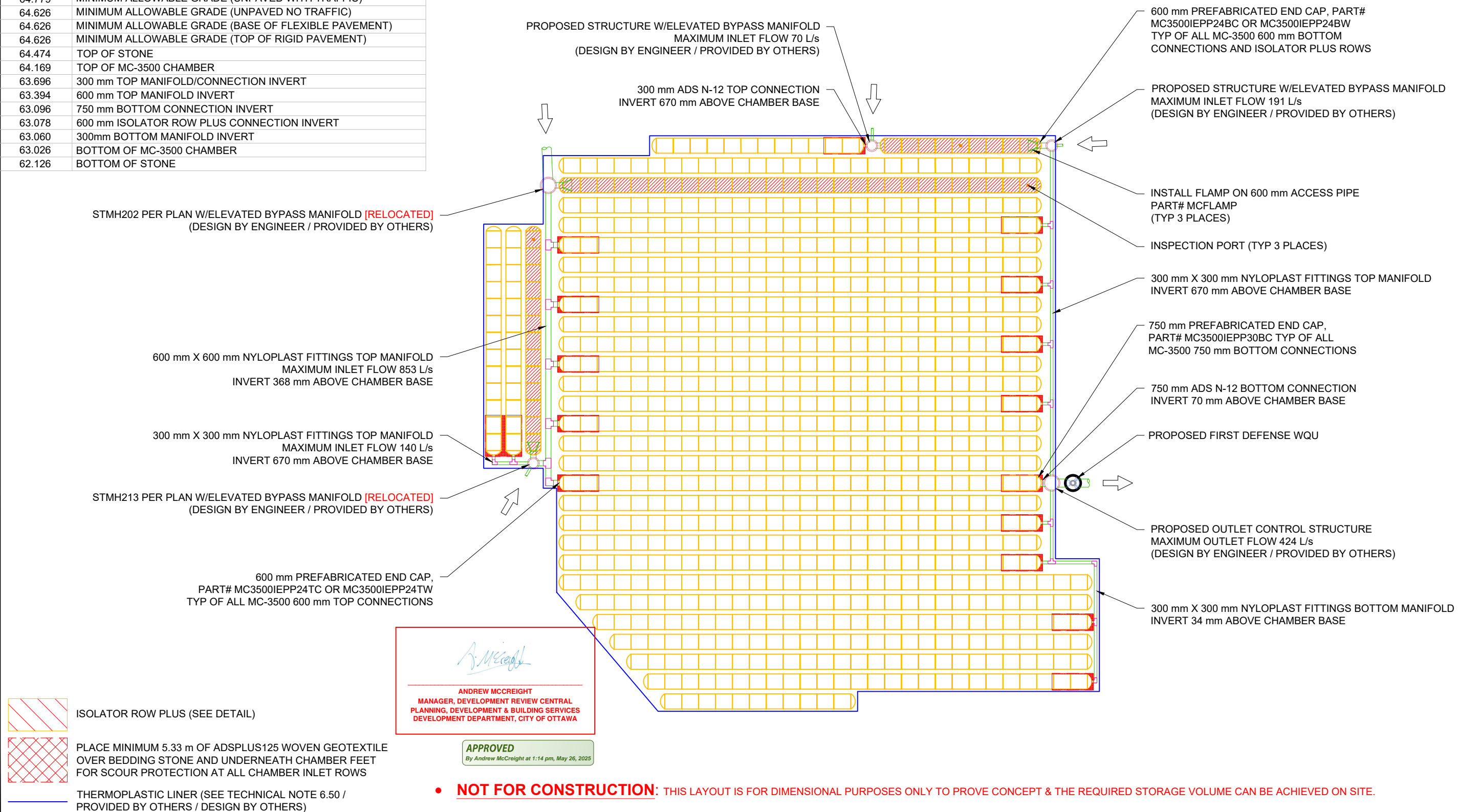
CONTACT STORMTECH AT 1-800-821-6710 WITH ANY QUESTIONS ON INSTALLATION REQUIREMENTS OR WEIGHT LIMITS FOR CONSTRUCTION EQUIPMENT.

**IMPORTANT - THIS PROJECT REQUIRES COMPACTION OF EMBEDMENT STONE AND REQUIREMENTS FOR STONE HARDNESS AND SHAPE WHICH ARE NOT SPECIFIED IN OTHER STORMTECH DOCUMENTS. CONTRACTORS MUST FOLLOW THE SPECIAL PROVISIONS IN THIS PLAN SET.**

830	STORMTECH MC-3500 CHAMBERS
66	STORMTECH MC-3500 END CAPS
305	STONE ABOVE (mm)
900	STONE BELOW (mm)
40	% STONE VOID
<b>4,302.5</b>	<b>INSTALLED SYSTEM VOLUME (m³) ABOVE ELEVATION 63.060 (PERIMETER STONE INCLUDED)</b>
5,013.5	SYSTEM AREA (m²)
299.6	SYSTEM PERIMETER (m)

66.28±	MAXIMUM GRADE PER ENGINEER'S PLANS
64.779	MINIMUM ALLOWABLE GRADE (UNPAVED WITH TRAFFIC)
64.626	MINIMUM ALLOWABLE GRADE (UNPAVED NO TRAFFIC)
64.626	MINIMUM ALLOWABLE GRADE (BASE OF FLEXIBLE PAVEMENT)
64.626	MINIMUM ALLOWABLE GRADE (TOP OF RIGID PAVEMENT)
64.474	TOP OF STONE
64.169	TOP OF MC-3500 CHAMBER
63.696	300 mm TOP MANIFOLD/CONNECTION INVERT
63.394	600 mm TOP MANIFOLD INVERT
63.096	750 mm BOTTOM CONNECTION INVERT
63.078	600 mm ISOLATOR ROW PLUS CONNECTION INVERT
63.060	300mm BOTTOM MANIFOLD INVERT
63.026	BOTTOM OF MC-3500 CHAMBER
62.126	BOTTOM OF STONE

1. INSTALLATION REQUIREMENTS SHALL BE AS SPECIFIED IN THE STORMTECH DESIGN MANUALS AND CONSTRUCTION GUIDES EXCEPT AS MODIFIED IN THESE SPECIAL PROVISIONS.
2. ATTENTION IS CALLED TO "TABLE 1 - ACCEPTABLE FILL MATERIALS" IN THE STORMTECH CONSTRUCTION GUIDE AND ALL OTHER APPEARANCES OF THE "ACCEPTABLE FILL MATERIALS" TABLE. FOR AREAS OF THE SYSTEM WITH COVER ABOVE 11 FEET (3.4 m) FOR THE MC-4500/MC-7200 AND ABOVE 12 FEET (3.7 m) FOR THE MC-3500, EMBEDMENT STONE SHALL BE COMPACTED WITH 1-3 PASSES OF A WALK BEHIND VIBRATORY PLATE COMPACTOR OR JUMPING JACK IN NO GREATER THAN 12" (300 mm) LIFTS.
3. STONE SHALL BE CLEAN, CRUSHED, AND ANGULAR AND SHALL CONFORM TO THE SPECIFICATIONS DESIGNATED IN THE ACCEPTABLE FILL MATERIALS TABLE.
4. STONE SHALL BE HARD AND DURABLE. IT IS THE ENGINEER'S OR CONTRACTOR'S RESPONSIBILITY TO SELECT HARD AND DURABLE STONE. STORMTECH CONSIDERS AN LA ABRASION VALUE OF LESS THAN OR EQUAL TO 30 TO BE HARD STONE.
5. FOUNDATION STONE SHALL BE MECHANICALLY COMPACTED WITH A VIBRATORY ROLLER OR VIBRATORY PLATE IN 6" (152 mm) LIFTS.
6. EMBEDMENT STONE MUST BE DUMPED IN PLACE BY A STONE SHOOTER OR CONVEYOR OR EXCAVATOR.
7. INSPECTION DURING THE INSTALLATION BY THE ENGINEER, OWNER OR OTHER REPRESENTATIVE IS RECOMMENDED. THE INSPECTION SHALL INCLUDE OBSERVATIONS OF THE CHAMBER SYMMETRY DURING BACKFILLING TO ENSURE THE CONTRACTOR'S METHODS ARE NOT CAUSING UNACCEPTABLE DISTORTION OF THE CHAMBERS.
8. AN ADS FIELD TECHNICIAN WILL CONDUCT A PRE-CONSTRUCTION MEETING TO TRAIN REPRESENTATIVES INSTALLING THE CHAMBERS AND THOSE WHO MAY BE PERFORMING INSTALLATION INSPECTIONS.



• **NOT FOR CONSTRUCTION:** THIS LAYOUT IS FOR DIMENSIONAL PURPOSES ONLY TO PROVE CONCEPT & THE REQUIRED STORAGE VOLUME CAN BE ACHIEVED ON SITE.

**LANDSLOWNE 2.0**

OTTAWA, ON.

DATE:	8/28/24	DRAWN:	RCT
-------	---------	--------	-----

PROJECT #:	S426399	CHECKED:	RCT
------------	---------	----------	-----

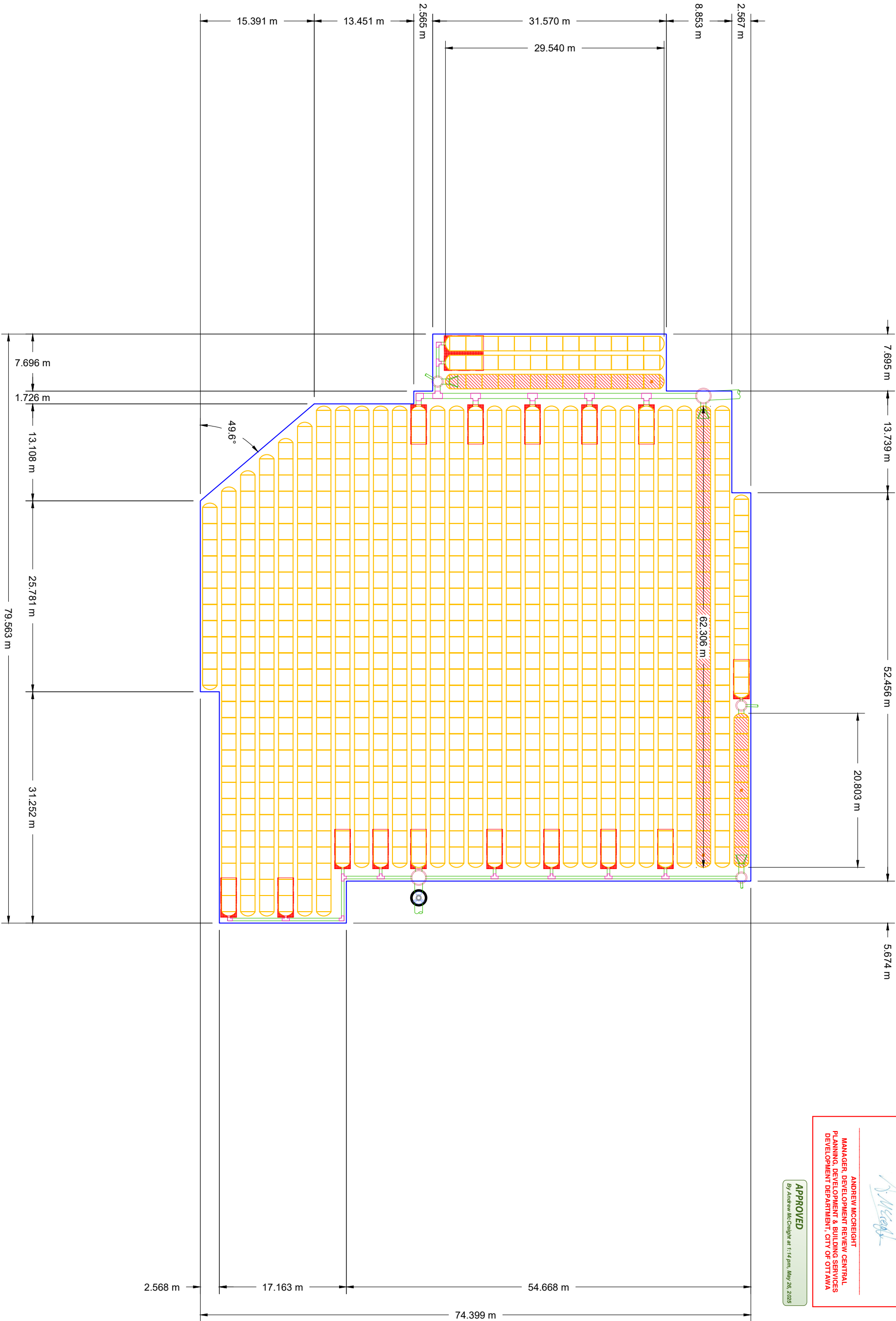
**StormTech®**  
Chamber System

1-800-821-6710 | WWW.STORMTECH.COM

**ADS**<sup>®</sup>  
4640 TRUEMAN BLVD  
HILLIARD, OH 43026

SCALE = 1 : 500

THIS DRAWING HAS BEEN PREPARED BASED ON INFORMATION PROVIDED TO ADS UNDER THE DIRECTION OF THE SITE DESIGN ENGINEER OR OTHER PROJECT REPRESENTATIVE. THE SITE DESIGN ENGINEER SHALL REVIEW THIS DRAWING PRIOR TO CONSTRUCTION. IT IS THE INTENT AND RESPONSIBILITY OF THE SITE DESIGN ENGINEER TO ENSURE THAT THE PRODUCT(S) IDENTIFIED AND ALL ASSOCIATED DETAILS MEET ALL APPLICABLE LAWS, REGULATIONS, AND PROJECT REQUIREMENTS.



**APPROVED**  
By Andrew McCreight at 1:14 pm, May 28, 2025

**ANDREW MCCREIGHT**  
MANAGER, DEVELOPMENT REVIEW CENTRAL  
PLANNING, DEVELOPMENT & BUILDING SERVICES  
DEVELOPMENT DEPARTMENT, CITY OF OTTAWA



4640 TRUEMAN BLVD  
HILLIARD, OH 43026

SCALE = 1 : 500

**StormTech®**  
Chamber System

1-800-821-6710 | WWW.STORMTECH.COM

12/13/24	JR	JPR	REVISED TO TIER II
8/29/24	RCT	RCT	NEW VOLUME 4300M3/ADDED CHAMBERS
DATE	DRWN	CHKD	DESCRIPTION

LANSDOWNE 2.0

OTTAWA, ON.

DATE:	8/28/24	DRAWN:	RCT
PROJECT #:	S426399	CHECKED:	RCT

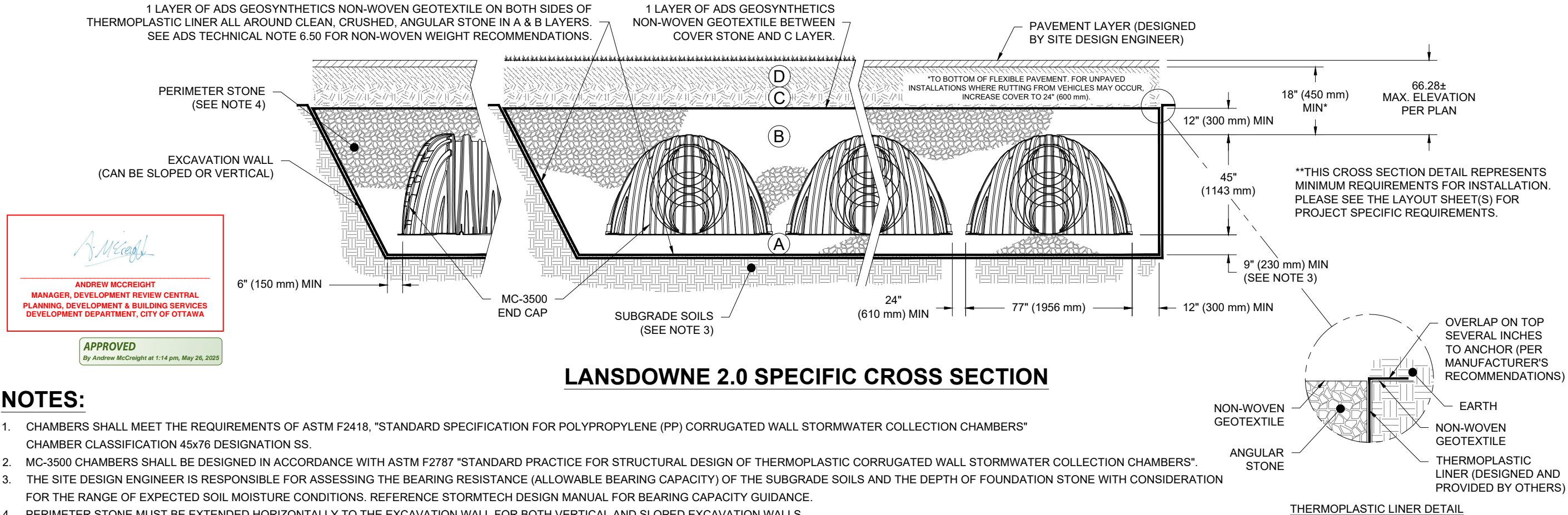


## ACCEPTABLE FILL MATERIALS: STORMTECH MC-3500 CHAMBER SYSTEMS

MATERIAL LOCATION		DESCRIPTION	AASHTO MATERIAL CLASSIFICATIONS	COMPACTION / DENSITY REQUIREMENT
D	<b>FINAL FILL:</b> FILL MATERIAL FOR LAYER 'D' STARTS FROM THE TOP OF THE 'C' LAYER TO THE BOTTOM OF FLEXIBLE PAVEMENT OR UNPAVED FINISHED GRADE ABOVE. NOTE THAT PAVEMENT SUBBASE MAY BE PART OF THE 'D' LAYER	ANY SOIL/ROCK MATERIALS, NATIVE SOILS, OR PER ENGINEER'S PLANS. CHECK PLANS FOR PAVEMENT SUBGRADE REQUIREMENTS.	N/A	PREPARE PER SITE DESIGN ENGINEER'S PLANS. PAVED INSTALLATIONS MAY HAVE STRINGENT MATERIAL AND PREPARATION REQUIREMENTS.
C	<b>INITIAL FILL:</b> FILL MATERIAL FOR LAYER 'C' STARTS FROM THE TOP OF THE EMBEDMENT STONE ('B' LAYER) TO 18" (450 mm) ABOVE THE TOP OF THE CHAMBER. NOTE THAT PAVEMENT SUBBASE MAY BE A PART OF THE 'C' LAYER.	GRANULAR WELL-GRADED SOIL/AGGREGATE MIXTURES, <35% FINES OR PROCESSED AGGREGATE.  MOST PAVEMENT SUBBASE MATERIALS CAN BE USED IN LIEU OF THIS LAYER.	AASHTO M145 <sup>1</sup> A-1, A-2-4, A-3  OR  AASHTO M43 <sup>1</sup> 3, 357, 4, 467, 5, 56, 57, 6, 67, 68, 7, 78, 8, 89, 9, 10	BEGIN COMPACTIONS AFTER 18" (450 mm) OF MATERIAL OVER THE CHAMBERS IS REACHED. COMPACT ADDITIONAL LAYERS IN 12" (300 mm) MAX LIFTS TO A MIN. 95% PROCTOR DENSITY FOR WELL GRADED MATERIAL AND 95% RELATIVE DENSITY FOR PROCESSED AGGREGATE MATERIALS.
B	<b>EMBEDMENT STONE:</b> FILL SURROUNDING THE CHAMBERS FROM THE FOUNDATION STONE ('A' LAYER) TO THE 'C' LAYER ABOVE.	CLEAN, CRUSHED, ANGULAR STONE OR RECYCLED CONCRETE <sup>5</sup>	AASHTO M43 <sup>1</sup> 3, 357, 4, 467, 5, 56, 57	<b>COMPACTION REQUIRED. SEE SPECIAL REQUIREMENTS ON LAYOUT PAGE.</b>
A	<b>FOUNDATION STONE:</b> FILL BELOW CHAMBERS FROM THE SUBGRADE UP TO THE FOOT (BOTTOM) OF THE CHAMBER.	CLEAN, CRUSHED, ANGULAR STONE OR RECYCLED CONCRETE <sup>5</sup>	AASHTO M43 <sup>1</sup> 3, 357, 4, 467, 5, 56, 57	PLATE COMPACT OR ROLL TO ACHIEVE A FLAT SURFACE. <sup>2,3</sup>

PLEASE NOTE:

1. THE LISTED AASHTO DESIGNATIONS ARE FOR GRADATIONS ONLY. THE STONE MUST ALSO BE CLEAN, CRUSHED, ANGULAR. FOR EXAMPLE, A SPECIFICATION FOR #4 STONE WOULD STATE: "CLEAN, CRUSHED, ANGULAR NO. 4 (AASHTO M43) STONE".
2. STORMTECH COMPACTION REQUIREMENTS ARE MET FOR 'A' LOCATION MATERIALS WHEN PLACED AND COMPACTED IN 9" (230 mm) (MAX) LIFTS USING TWO FULL COVERAGES WITH A VIBRATORY COMPACTOR.
3. WHERE INFILTRATION SURFACES MAY BE COMPROMISED BY COMPACTION, FOR STANDARD DESIGN LOAD CONDITIONS, A FLAT SURFACE MAY BE ACHIEVED BY RAKING OR DRAGGING WITHOUT COMPACTION EQUIPMENT. FOR SPECIAL LOAD DESIGNS, CONTACT STORMTECH FOR COMPACTION REQUIREMENTS.
4. ONCE LAYER 'C' IS PLACED, ANY SOIL/MATERIAL CAN BE PLACED IN LAYER 'D' UP TO THE FINISHED GRADE. MOST PAVEMENT SUBBASE SOILS CAN BE USED TO REPLACE THE MATERIAL REQUIREMENTS OF LAYER 'C' OR 'D' AT THE SITE DESIGN ENGINEER'S DISCRETION.
5. WHERE RECYCLED CONCRETE AGGREGATE IS USED IN LAYERS 'A' OR 'B' THE MATERIAL SHOULD ALSO MEET THE ACCEPTABILITY CRITERIA OUTLINED IN TECHNICAL NOTE 6.20 "RECYCLED CONCRETE STRUCTURAL BACKFILL".



## NOTES:

1. CHAMBERS SHALL MEET THE REQUIREMENTS OF ASTM F2418, "STANDARD SPECIFICATION FOR POLYPROPYLENE (PP) CORRUGATED WALL STORMWATER COLLECTION CHAMBERS" CHAMBER CLASSIFICATION 45x76 DESIGNATION SS.
2. MC-3500 CHAMBERS SHALL BE DESIGNED IN ACCORDANCE WITH ASTM F2787 "STANDARD PRACTICE FOR STRUCTURAL DESIGN OF THERMOPLASTIC CORRUGATED WALL STORMWATER COLLECTION CHAMBERS".
3. THE SITE DESIGN ENGINEER IS RESPONSIBLE FOR ASSESSING THE BEARING RESISTANCE (ALLOWABLE BEARING CAPACITY) OF THE SUBGRADE SOILS AND THE DEPTH OF FOUNDATION STONE WITH CONSIDERATION FOR THE RANGE OF EXPECTED SOIL MOISTURE CONDITIONS. REFERENCE STORMTECH DESIGN MANUAL FOR BEARING CAPACITY GUIDANCE.
4. PERIMETER STONE MUST BE EXTENDED HORIZONTALLY TO THE EXCAVATION WALL FOR BOTH VERTICAL AND SLOPED EXCAVATION WALLS.
5. REQUIREMENTS FOR HANDLING AND INSTALLATION:
  - TO MAINTAIN THE WIDTH OF CHAMBERS DURING SHIPPING AND HANDLING, CHAMBERS SHALL HAVE INTEGRAL, INTERLOCKING STACKING LUGS.
  - TO ENSURE A SECURE JOINT DURING INSTALLATION AND BACKFILL, THE HEIGHT OF THE CHAMBER JOINT SHALL NOT BE LESS THAN 3".
  - TO ENSURE THE INTEGRITY OF THE ARCH SHAPE DURING INSTALLATION, a) THE ARCH STIFFNESS CONSTANT AS DEFINED IN SECTION 6.2.8 OF ASTM F2418 SHALL BE GREATER THAN OR EQUAL TO 500 LBS/FT/% AND b) TO RESIST CHAMBER DEFORMATION DURING INSTALLATION AT ELEVATED TEMPERATURES (ABOVE 73° F / 23° C), CHAMBERS SHALL BE PRODUCED FROM REFLECTIVE GOLD OR YELLOW COLORS.

# LANDOWNE 2.0

OTTAWA, ON.

DRAWN: RCT

CHECKED: RCT

REVIEW THIS DRAWING PRIOR TO CONSTRUCTION. IT IS THE

**StormTech®**  
Chamber System

1-800-821-6710 | WWW.STORMTECH.COM

4640 TRUEMAN BLVD  
HILLIARD, OH 43026



4 SHEET OF 6

THIS DRAWING HAS BEEN PREPARED BASED ON INFORMATION PROVIDED TO ADS UNDER THE DIRECTION OF THE SITE DESIGN ENGINEER OR OTHER PROJECT REPRESENTATIVE. THE SITE DESIGN ENGINEER SHALL REVIEW THIS DRAWING PRIOR TO CONSTRUCTION. IT IS THE RESPONSIBILITY OF THE SITE DESIGN ENGINEER TO ENSURE THAT THE PROPOSED DESIGN AND ALL ASSOCIATED DETAILS MEET ALL APPLICABLE LOCAL, STATE, FEDERAL, AND PROJECT REQUIREMENTS.





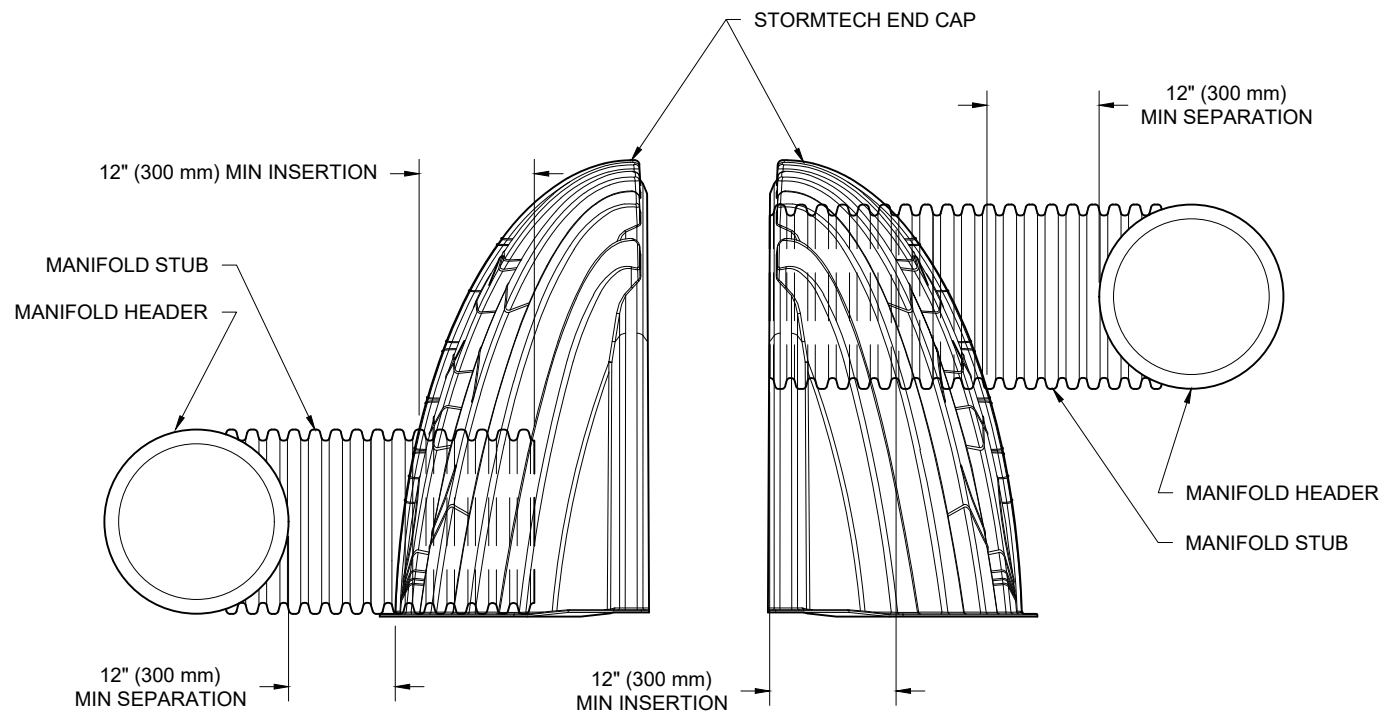
---

**ANDREW MCCREIGHT**  
**MANAGER, DEVELOPMENT REVIEW CENTRAL**  
**PLANNING, DEVELOPMENT & BUILDING SERVICES**  
**DESIGN DEPARTMENT, CITY OF OTTAWA**

By Andrew McCreight at 1:14 pm, May 26, 2025

### MC-SERIES END CAP INSERTION DETAIL

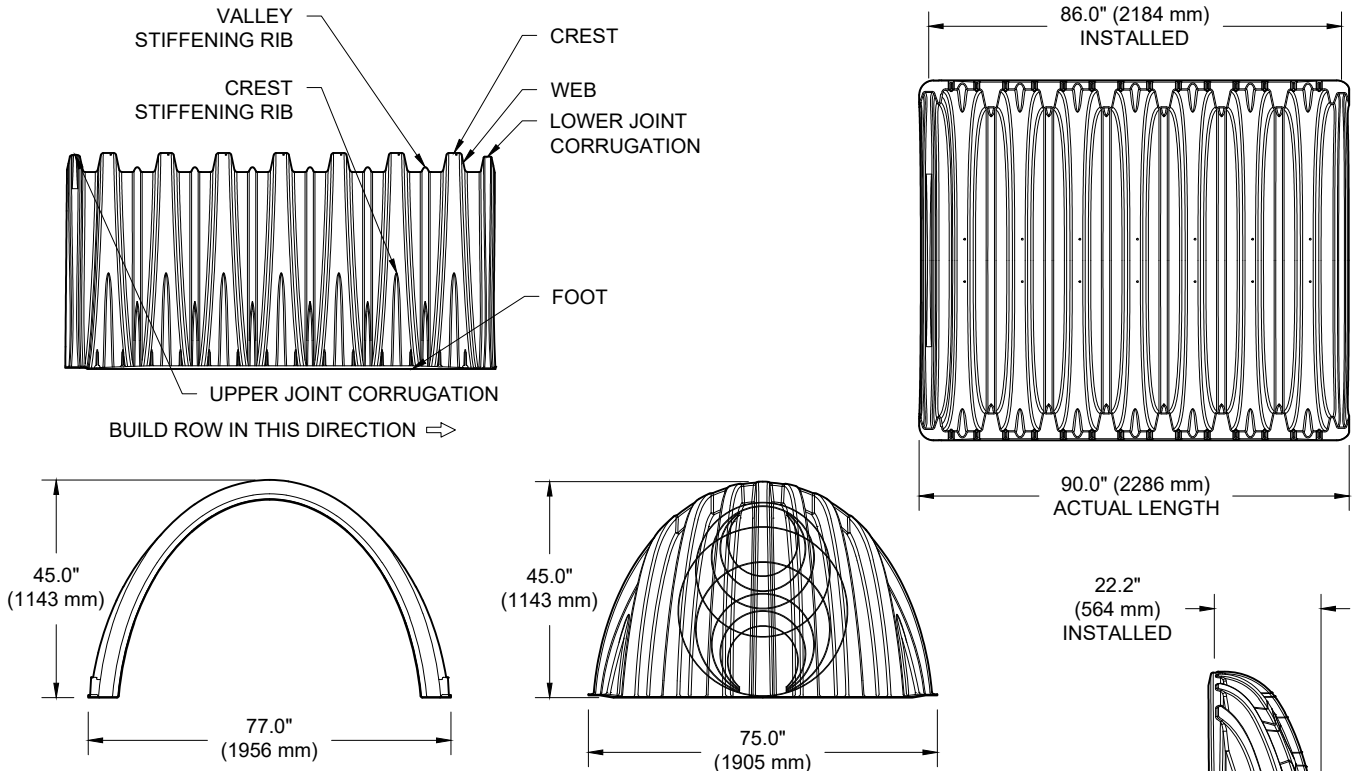
NTS



NOTE: MANIFOLD STUB MUST BE LAID HORIZONTAL FOR A PROPER FIT IN END CAP OPENING.

## MC-3500 TECHNICAL SPECIFICATION

NTS



## NOMINAL CHAMBER SPECIFICATIONS

SIZE (W X H X INSTALLED LENGTH)  
CHAMBER STORAGE  
MINIMUM INSTALLED STORAGE\*  
WEIGHT

77.0" X 45.0" X 86.0"	(1956 mm X 1143 mm X 2184 mm)
109.9 CUBIC FEET	(3.11 m <sup>3</sup> )
175.0 CUBIC FEET	(4.96 m <sup>3</sup> )
134 lbs.	(60.8 kg)

## NOMINAL END CAP SPECIFICATIONS

SIZE (W X H X INSTALLED LENGTH)  
END CAP STORAGE  
MINIMUM INSTALLED STORAGE\*  
WEIGHT

75.0" X 45.0" X 22.2"	(1905 mm X 1143 mm X 564 mm)
14.9 CUBIC FEET	(0.42 m <sup>3</sup> )
45.1 CUBIC FEET	(1.28 m <sup>3</sup> )
49 lbs.	(22.2 kg)

\*ASSUMES 12" (305 mm) STONE ABOVE, 9" (229 mm) STONE FOUNDATION, 6" (152 mm) STONE BETWEEN CHAMBERS, 6" (152 mm) STONE PERIMETER IN FRONT OF END CAPS AND 40% STONE POROSITY.

PARTIAL CUT HOLES AT BOTTOM OF END CAP FOR PART NUMBERS ENDING WITH "B"  
PARTIAL CUT HOLES AT TOP OF END CAP FOR PART NUMBERS ENDING WITH "T"  
END CAPS WITH A PREFABRICATED WELDED STUB END WITH "W"  
END CAPS WITH A WELDED CROWN PLATE END WITH "C"

PART #	STUB	B	C
MC3500IEPP06T	6" (150 mm)	33.21" (844 mm)	---
MC3500IEPP06B		---	0.66" (17 mm)
MC3500IEPP08T	8" (200 mm)	31.16" (791 mm)	---
MC3500IEPP08B		---	0.81" (21 mm)
MC3500IEPP10T	10" (250 mm)	29.04" (738 mm)	---
MC3500IEPP10B		---	0.93" (24 mm)
MC3500IEPP12T	12" (300 mm)	26.36" (670 mm)	---
MC3500IEPP12B		---	1.35" (34 mm)
MC3500IEPP15T	15" (375 mm)	23.39" (594 mm)	---
MC3500IEPP15B		---	1.50" (38 mm)
MC3500IEPP18TC	18" (450 mm)	20.03" (509 mm)	---
MC3500IEPP18TW		---	1.77" (45 mm)
MC3500IEPP18BC			
MC3500IEPP18BW	24" (600 mm)	14.48" (368 mm)	---
MC3500IEPP24TC			
MC3500IEPP24TW		---	2.06" (52 mm)
MC3500IEPP24BC			
MC3500IEPP24BW	30" (750 mm)	---	2.75" (70 mm)
MC3500IEPP30BC			

CUSTOM PARTIAL CUT INVERTS ARE AVAILABLE UPON REQUEST. INVENTORIED MANIFOLDS INCLUDE 12-24" (300-600 mm) SIZE ON SIZE AND 15-48" (375-1200 mm) ECCENTRIC MANIFOLDS. CUSTOM INVERT LOCATIONS ON THE MC-3500 END CAP CUT IN THE FIELD ARE NOT RECOMMENDED FOR PIPE SIZES GREATER THAN 10" (250 mm). THE INVERT LOCATION IN COLUMN 'B' ARE THE HIGHEST POSSIBLE FOR THE PIPE SIZE.

# LANDSLIDE 2.0

OTTAWA, ON.

DATE:	8/28/24	DRAWN:	RCT
-------	---------	--------	-----

PROJECT #:	S426399	CHECKED:	RCT
------------	---------	----------	-----

THIS DRAWING HAS BEEN PREPARED BASED ON INFORMATION PROVIDED TO ADS UNDER THE DIRECTION OF THE SITE DESIGN ENGINEER OR OTHER PROJECT REPRESENTATIVE. THE SITE DESIGN ENGINEER SHALL REVIEW THIS DRAWING PRIOR TO CONSTRUCTION. IT IS THE RESPONSIBILITY OF THE SITE DESIGN ENGINEER TO ENSURE THAT THE PROJECT(S) IDENTIFIED AND ALL ASSOCIATED DETAILS MEET ALL APPLICABLE LAWS, REGULATIONS, AND PROJECT REQUIREMENTS.

**StormTech®**  
Chamber System

1-800-821-6710 | WWW.STORMTECH.COM

**ADS**  
4640 TRUEMAN BLVD  
HILLIARD, OH 43026

4640 TRUEMAN BLVD  
HILLIARD, OH 43026

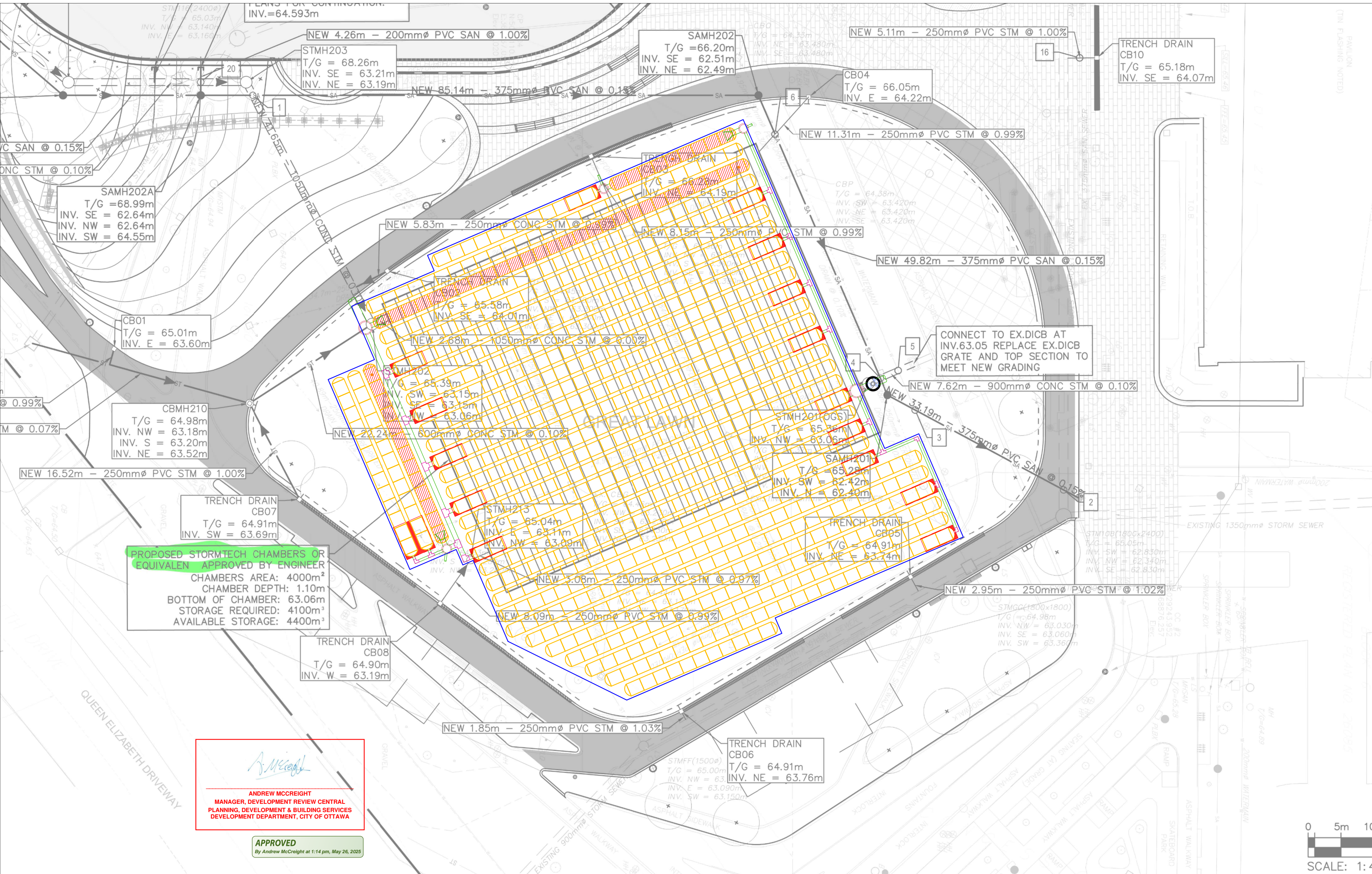
6

SHEET

OF

6





**PROPOSED STORMTECH CHAMBERS OR EQUIVALENT APPROVED BY ENGINEER**  
CHAMBERS AREA: 4000m<sup>2</sup>  
CHAMBER DEPTH: 1.10m  
BOTTOM OF CHAMBER: 63.06m  
STORAGE REQUIRED: 4100m<sup>3</sup>  
AVAILABLE STORAGE: 4400m<sup>3</sup>

*Andrew McCreight*  
**ANDREW MCCREIGHT**  
MANAGER, DEVELOPMENT REVIEW CENTRAL  
PLANNING, DEVELOPMENT & BUILDING SERVICES  
DEVELOPMENT DEPARTMENT, CITY OF OTTAWA

**APPROVED**  
By Andrew McCreight at 1:14 pm, May 26, 2025

