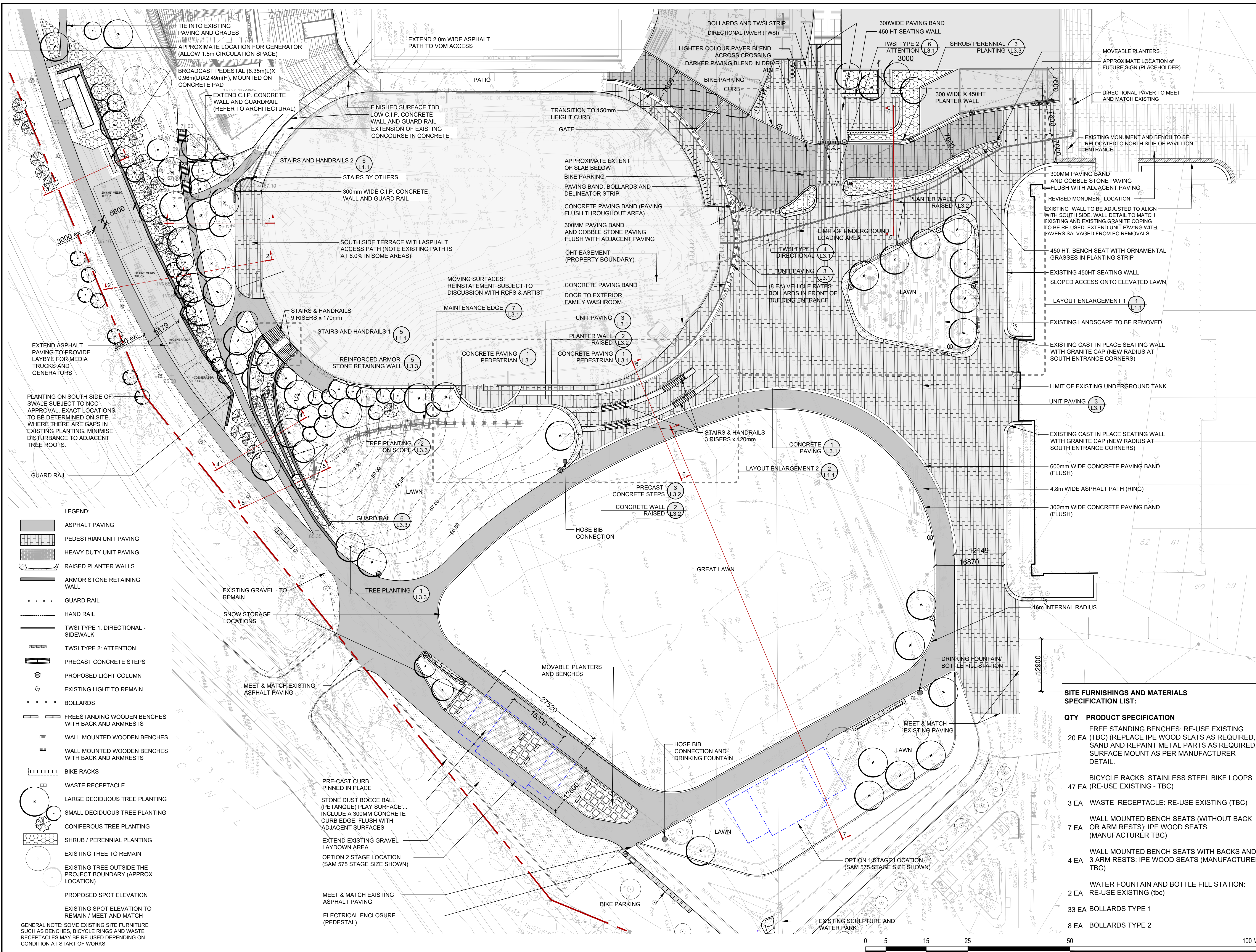


© Copyright of BBB Architects Toronto Inc. 2024.
 Not to be reproduced or distributed without written
 authorization of the copyright owner.

DATE PLOTTED: 2024-09-30 9:23:15 AM



SITE FURNISHINGS AND MATERIALS SPECIFICATION LIST:

QTY	PRODUCT SPECIFICATION
20 EA	FREE STANDING BENCHES: RE-USE EXISTING (TBC) (REPLACE IPE WOOD SLATS AS REQUIRED, SAND AND REPAINT METAL PARTS AS REQUIRED.) SURFACE MOUNT AS PER MANUFACTURER DETAIL.
47 EA	WALL MOUNTED BENCH SEATS (WITHOUT BACK OR ARM RESTS): IPE WOOD SEATS (MANUFACTURER TBC)
3 EA	WASTE RECEPTACLE: RE-USE EXISTING (TBC)
7 EA	BIKE RACKS: STAINLESS STEEL BIKE LOOPS (RE-USE EXISTING - TBC)
4 EA	WALL MOUNTED BENCH SEATS WITH BACKS AND 3 ARM RESTS: IPE WOOD SEATS (MANUFACTURER TBC)
2 EA	DRINKING FOUNTAIN AND BOTTLE FILL STATION: RE-USE EXISTING (TBC)
33 EA	BOLLARDS TYPE 1
8 EA	BOLLARDS TYPE 2

Ottawa
OSEG
 Ottawa Sports and Entertainment Group

BRISBROOK BEYOND ARCHITECTS
 14 DUNCAN ST 4TH FLOOR
 TORONTO, ON M5H 3G8
 (416) 591-8999

ENTUITIVE
 135 LAURIER AVE WEST, SUITE 413
 OTTAWA, ON K1P 5J2
 (343) 308-9274

TMP
 200 KING ST. WEST, SUITE 310
 TORONTO, ON M5H 3T4
 (416) 499-8000
 MECH. PLUMB. FIRE PROTECTION ENGINEER

MULVEY & BANANI
 90 SHEPPARD AVE. EAST, SUITE 500
 TORONTO, ON M2N 3A
 (416) 751-2520
 ELEC. LIGHTING ENGINEER

C.S.W.
 319 MCRAE AVENUE, SUITE 502
 OTTAWA, ONTARIO K1Z 0B9
 (613) 729-4536
 LANDSCAPE ARCHITECT

KAIZEN
 UNIT 14, 1525 CORNWALL RD.
 OAKVILLE, ON L6J 0B2
 (905) 338-3222
 F&B CONSULTANT

NO.	DESCRIPTION	DATE
8	ISSUED FOR CITY SPA COMMENTS	2025-01-15
7	ISSUED FOR 90% DD	2024-12-23
6	ISSUED FOR 50% DD	2024-11-15
5	ISSUED FOR 35% DD	2024-10-18
4	ISSUED FOR CITY SPA COMMENTS	2024-10-04
3	ISSUED FOR CITY SPA COMMENTS	2024-09-05
2	ISSUED FOR COORDINATION	2024-08-07
1	ISSUED FOR PRE-CONSULTATION	2024-06-28
0	ISSUED FOR PRE-CONSULTATION	2024-05-31

REVISIONS/ ISSUES
 CONTRACTOR SHALL CHECK AND VERIFY ALL DIMENSIONS AND REPORT ANY OMISSIONS OR DISCREPANCIES TO THE ARCHITECT BEFORE PROCEEDING WITH THE WORK. DO NOT SCALE THE DRAWINGS.

ASSOCIATION OF LANDSCAPE ARCHITECTS OF ONTARIO

THIS DOCUMENT IS RELEASED FOR THE PURPOSE OF PRELIMINARY SUBMITTAL.

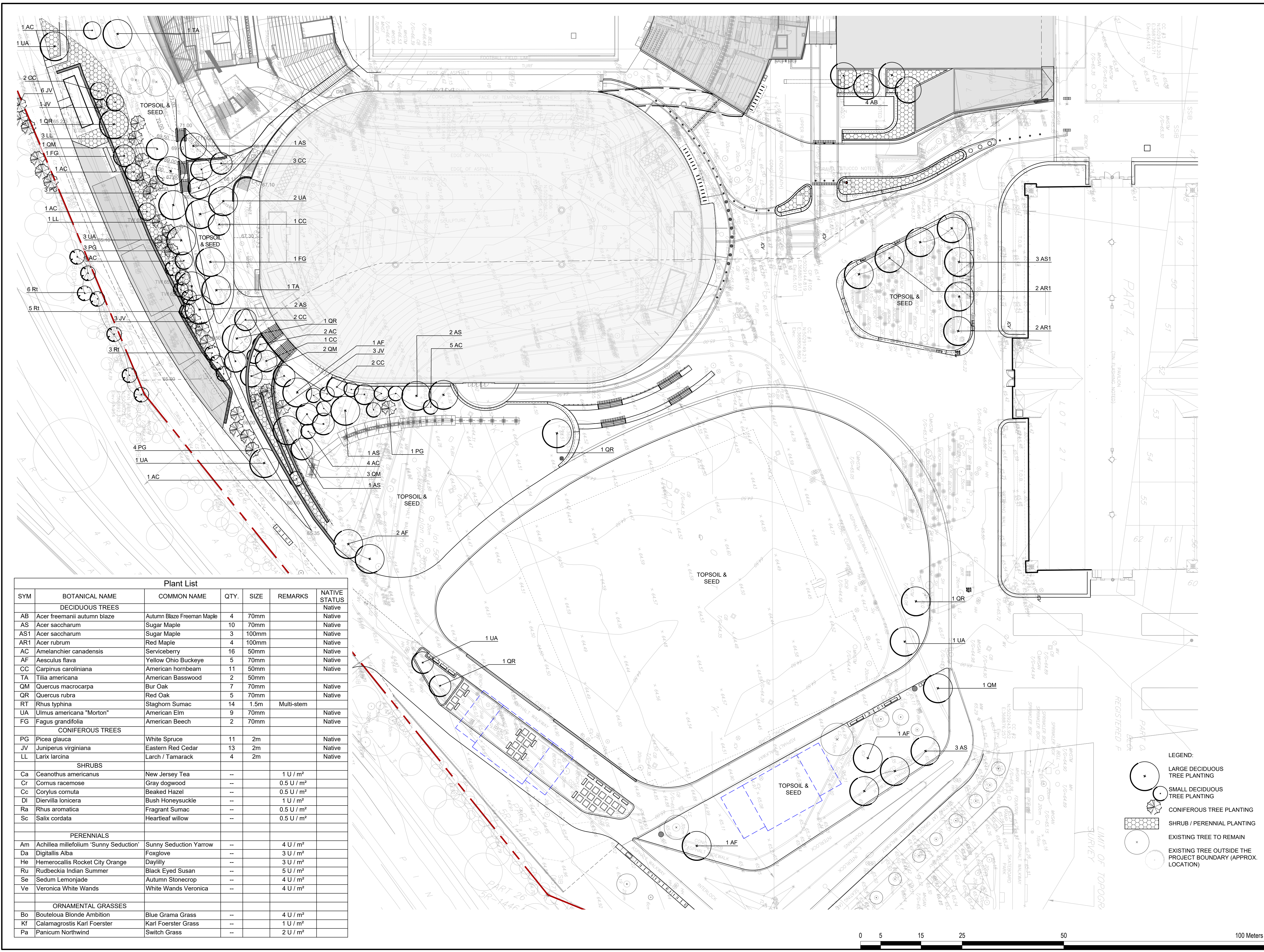
IT IS NOT TO BE USED FOR CONSTRUCTION PURPOSES.

DRAWN	SE / JA
DATE	05/31/24
CHECKED	JC

LANSDOWNE 2.0 EVENT CENTRE, NORTH SIDE STANDS AND PUBLIC REALM ENHANCEMENTS
 945 & 1015 BANK STREET

DWG. TITLE: **LANDSCAPE LAYOUT PLAN**

SCALE: 1 : 400
 DWG. NO.: EC-L1.0
 PROJ. NO.: CSW #1766-12
 PLAN # 19172

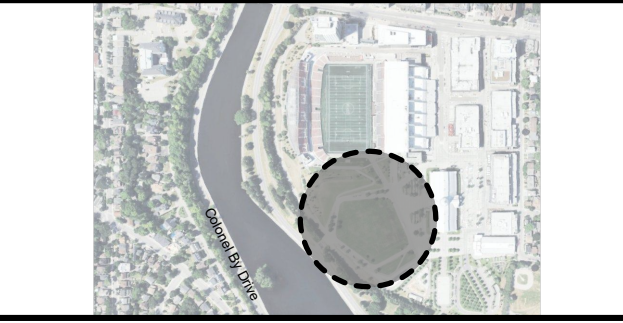


Plant List

SYM	BOTANICAL NAME	COMMON NAME	QTY.	SIZE	REMARKS	NATIVE STATUS
DECIDUOUS TREES						
AB	<i>Acer freemanii autumn blaze</i>	Autumn Blaze Freeman Maple	4	70mm		Native
AS	<i>Acer saccharum</i>	Sugar Maple	10	70mm		Native
AS1	<i>Acer saccharum</i>	Sugar Maple	3	100mm		Native
AR1	<i>Acer rubrum</i>	Red Maple	4	100mm		Native
AC	<i>Amelanchier canadensis</i>	Serviceberry	16	50mm		Native
AF	<i>Aesculus flava</i>	Yellow Ohio Buckeye	5	70mm		Native
CC	<i>Carpinus caroliniana</i>	American hornbeam	11	50mm		Native
TA	<i>Tilia americana</i>	American Basswood	2	50mm		Native
QM	<i>Quercus macrocarpa</i>	Bur Oak	7	70mm		Native
QR	<i>Quercus rubra</i>	Red Oak	5	70mm		Native
RT	<i>Rhus typhina</i>	Staghorn Sumac	14	1.5m	Multi-stem	
UA	<i>Ulmus americana "Morton"</i>	American Elm	9	70mm		Native
FG	<i>Fagus grandifolia</i>	American Beech	2	70mm		Native
CONIFEROUS TREES						
PG	<i>Picea glauca</i>	White Spruce	11	2m		Native
JV	<i>Juniperus virginiana</i>	Eastern Red Cedar	13	2m		Native
LL	<i>Larix laricina</i>	Larch / Tamarack	4	2m		Native
SHRUBS						
Ca	<i>Ceanothus americanus</i>	New Jersey Tea	--	1 U / m ²		
Cr	<i>Cornus racemosa</i>	Gray dogwood	--	0.5 U / m ²		
Cc	<i>Corylus cornuta</i>	Beaked Hazel	--	0.5 U / m ²		
DI	<i>Diervilla lonicera</i>	Bush Honeysuckle	--	1 U / m ²		
Ra	<i>Rhus aromatica</i>	Fragrant Sumac	--	0.5 U / m ²		
Sc	<i>Salix cordata</i>	Heartleaf willow	--	0.5 U / m ²		
PERENNIALS						
Am	<i>Achillea millefolium 'Sunny Seduction'</i>	Sunny Seduction Yarrow	--	4 U / m ²		
Da	<i>Digitalis Alba</i>	Foxglove	--	3 U / m ²		
He	<i>Hemerocallis Rocket City Orange</i>	Daylily	--	3 U / m ²		
Ru	<i>Rudbeckia Indian Summer</i>	Black Eyed Susan	--	5 U / m ²		
Se	<i>Sedum Lemonjade</i>	Autumn Stonecrop	--	4 U / m ²		
Ve	<i>Veronica White Wands</i>	White Wands Veronica	--	4 U / m ²		
ORNAMENTAL GRASSES						
Bo	<i>Bouteloua Blonde Ambition</i>	Blue Grama Grass	--	4 U / m ²		
Kf	<i>Calamagrostis Karl Foerster</i>	Karl Foerster Grass	--	1 U / m ²		
Pa	<i>Panicum Northwind</i>	Switch Grass	--	2 U / m ²		

NO.	DESCRIPTION	DATE
9	ISSUED FOR CITY SPA COMMENTS	2025-01-15
8	CD RELEASE	2024-12-23
7	ISSUED FOR 90% DD	2024-11-15
6	ISSUED FOR 50% DD	2024-10-18
5	ISSUED FOR 35% DD	2024-10-04
4	ISSUED FOR CITY SPA COMMENTS	2024-09-05
3	ISSUED FOR CITY SPA	2024-08-07
2	ISSUED FOR COORDINATION	2024-06-28
1	ISSUED FOR PRE-CONSULTATION	2024-05-31

REVISIONS/ ISSUES
 CONTRACTOR SHALL CHECK AND VERIFY ALL DIMENSIONS AND REPORT ANY OMISSIONS OR DISCREPANCIES TO THE ARCHITECT BEFORE PROCEEDING WITH THE WORK.
DO NOT SCALE THE DRAWINGS



SEAL THIS DOCUMENT IS RELEASED FOR THE PURPOSE OF PRELIMINARY SUBMITTAL



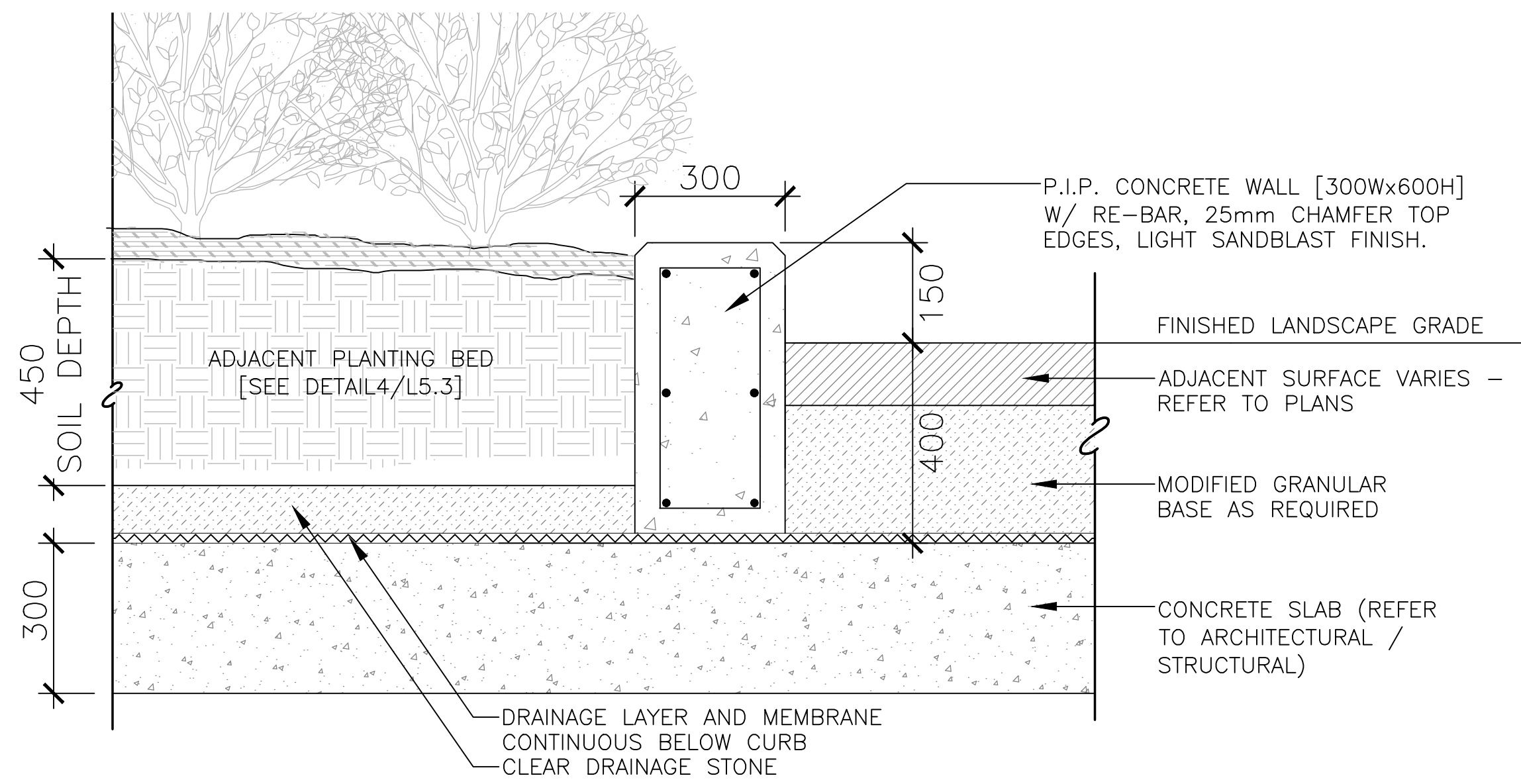
IT IS NOT TO BE USED FOR CONSTRUCTION PURPOSES

DRAWN	SE / JA
DATE	05/31/24
CHECKED	JC

LANSDOWNE 2.0
EVENT CENTRE,
NORTH SIDE STANDS AND
PUBLIC REALM
ENHANCEMENTS
 945 & 1015 BANK STREET

DWG. TITLE
LANDSCAPE PLANTING PLAN

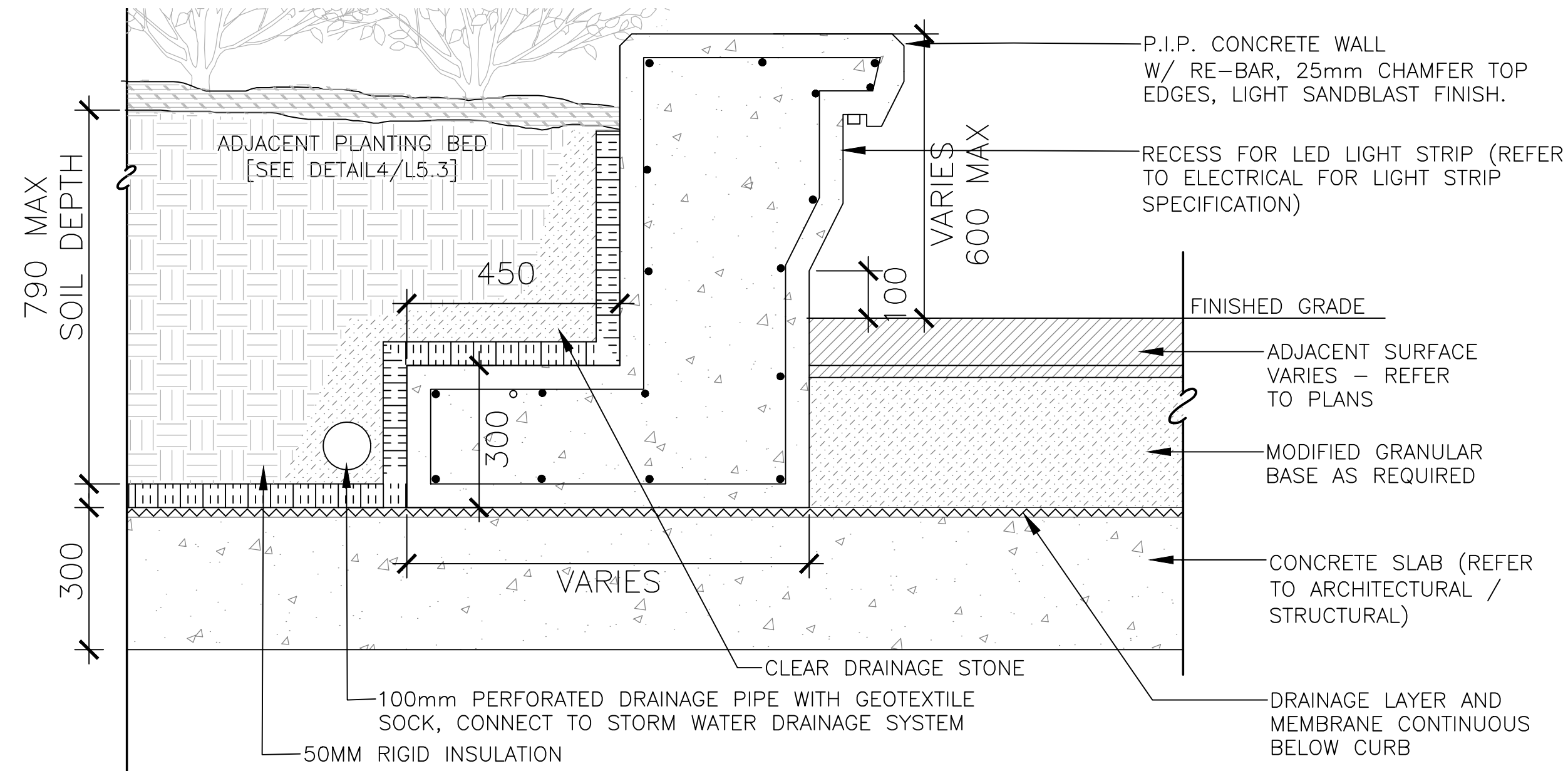
SCALE	1 : 400	DWG. NO.	EC-L1.1
PROJ. NO.	CSW #1766-12	FILE NO.	D07-02-04-0082



1 PLANTER CURB OVER ROOF SLAB - ROAD SIDE

3.2

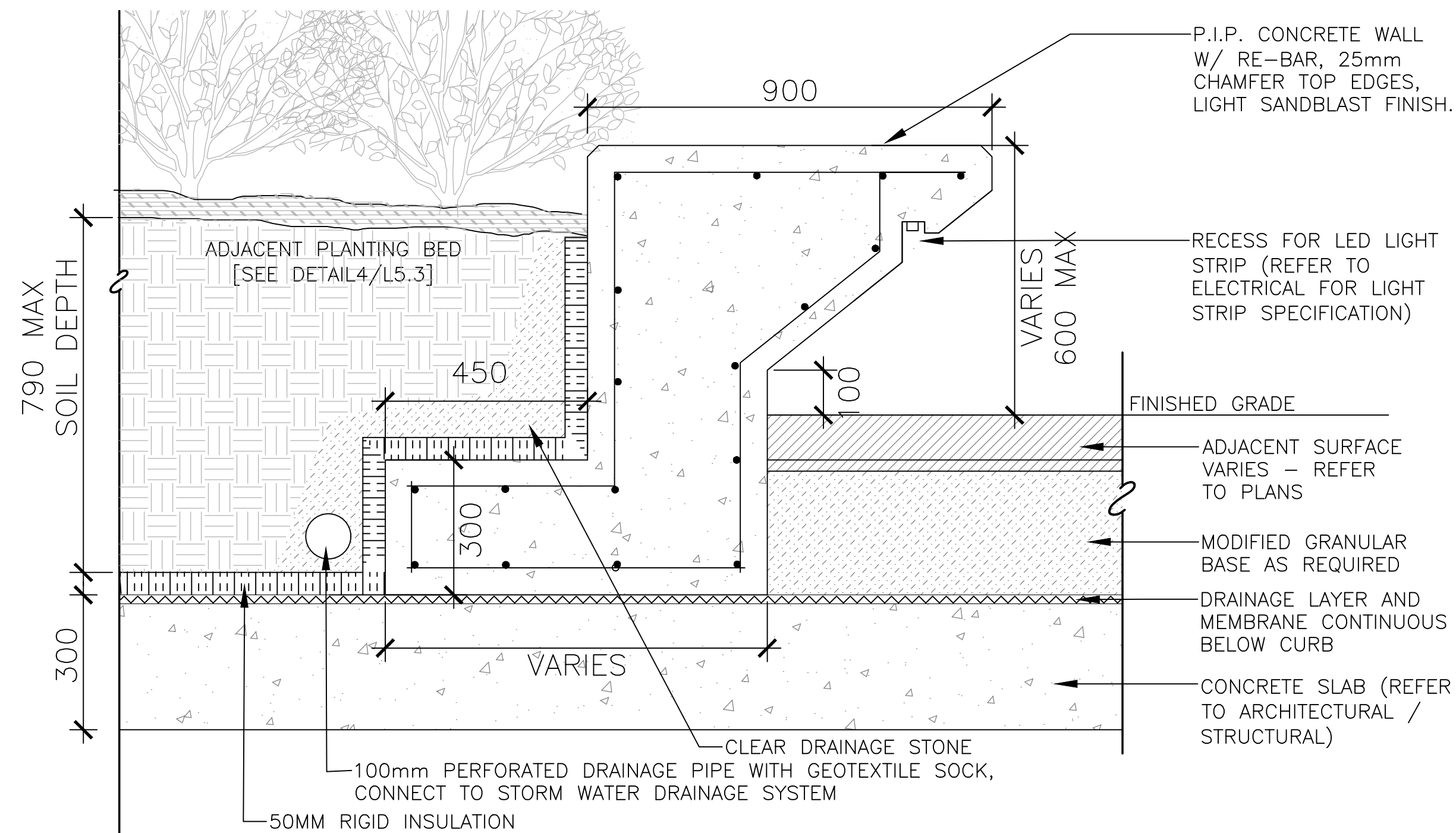
SCALE - 1:10



2A RAISED PLANTER WALL TYPE A - RAISED PODIUM

3.2

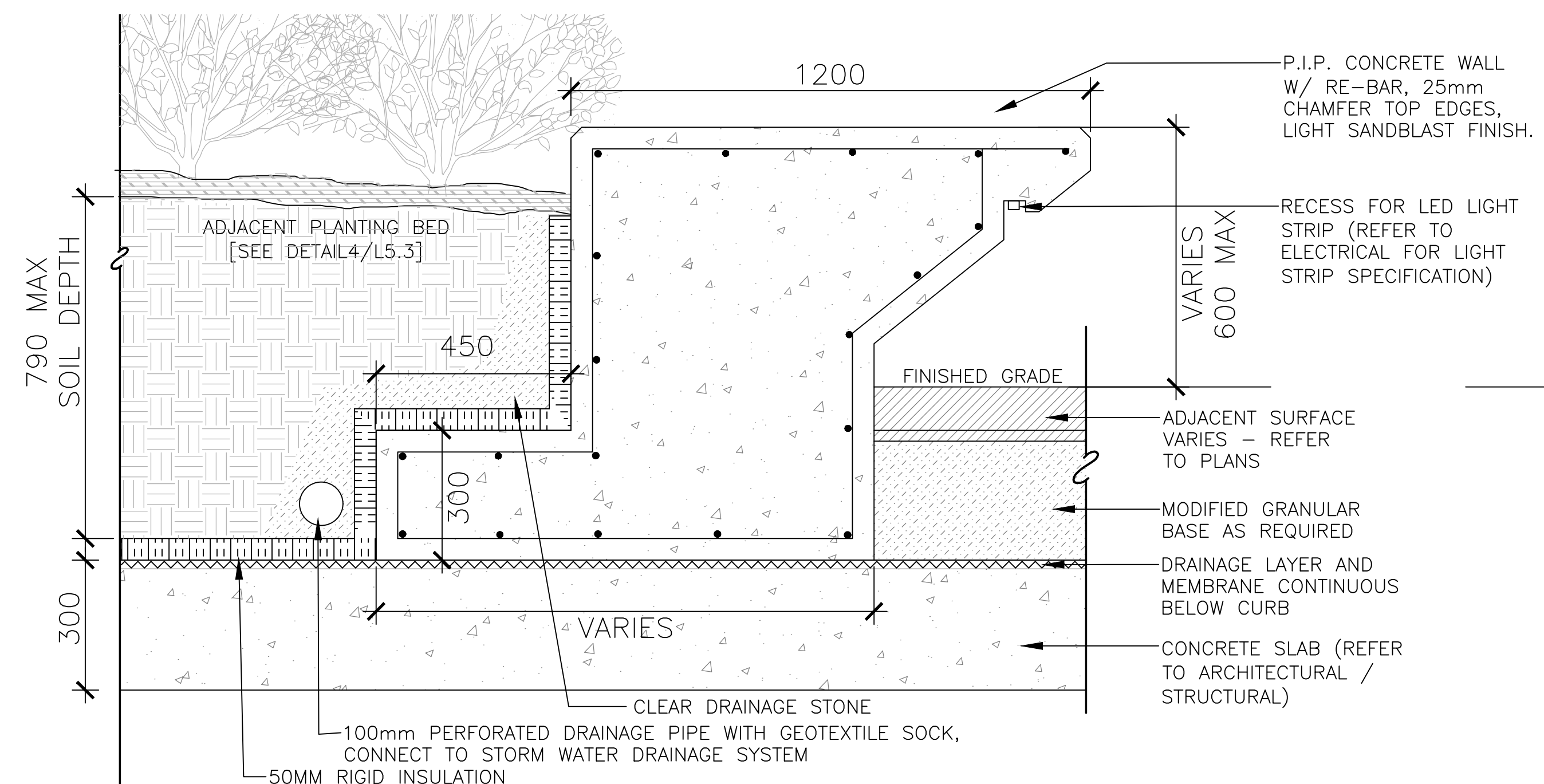
SCALE - 1:10



2B RAISED PLANTER WALL TYPE A - RAISED PODIUM

3.2

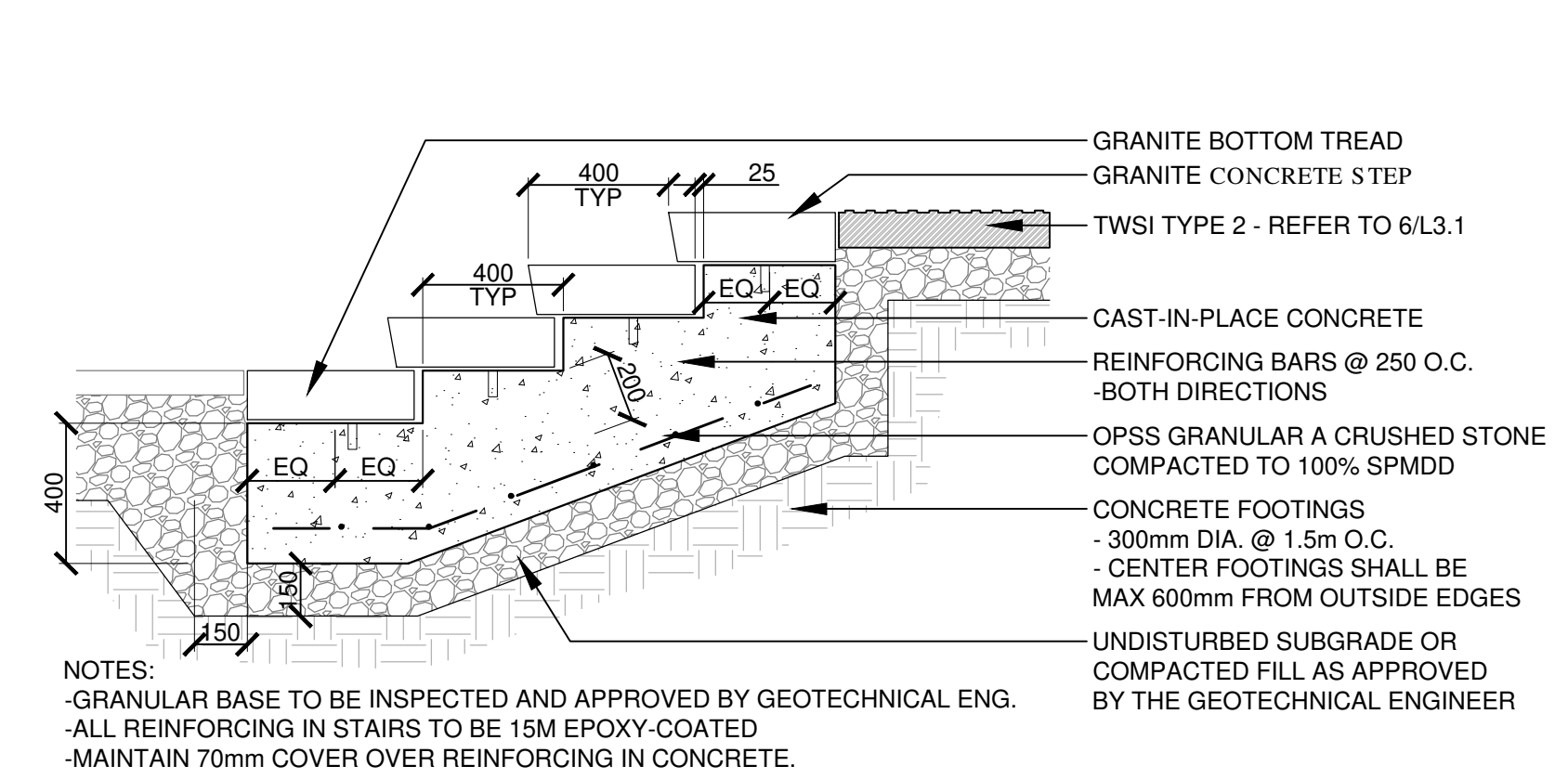
SCALE - 1:10



2C RAISED PLANTER WALL TYPE A - RAISED PODIUM

3.2

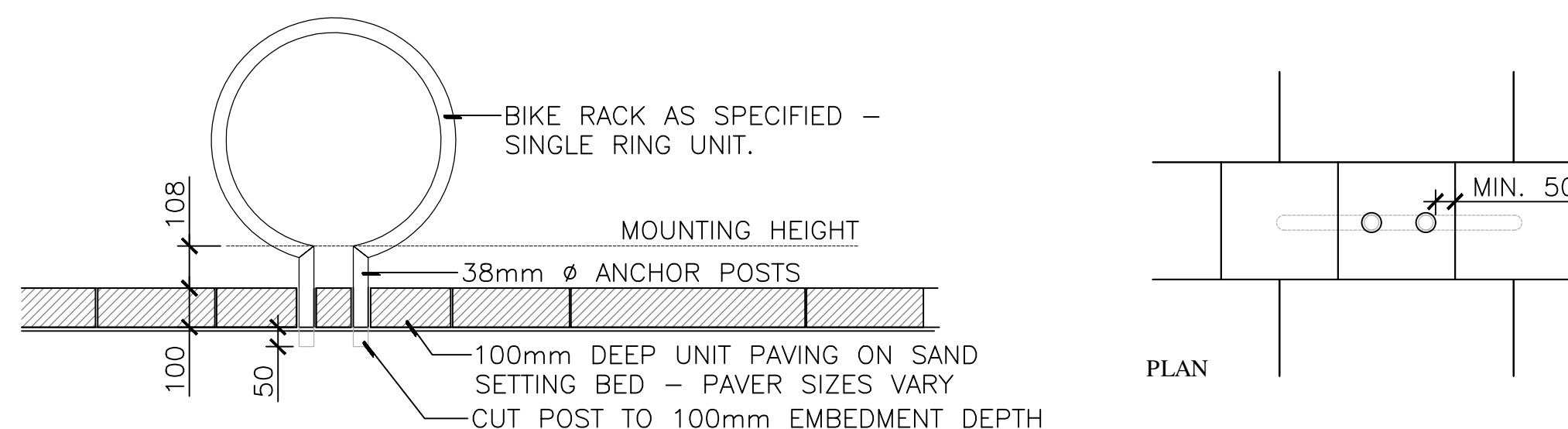
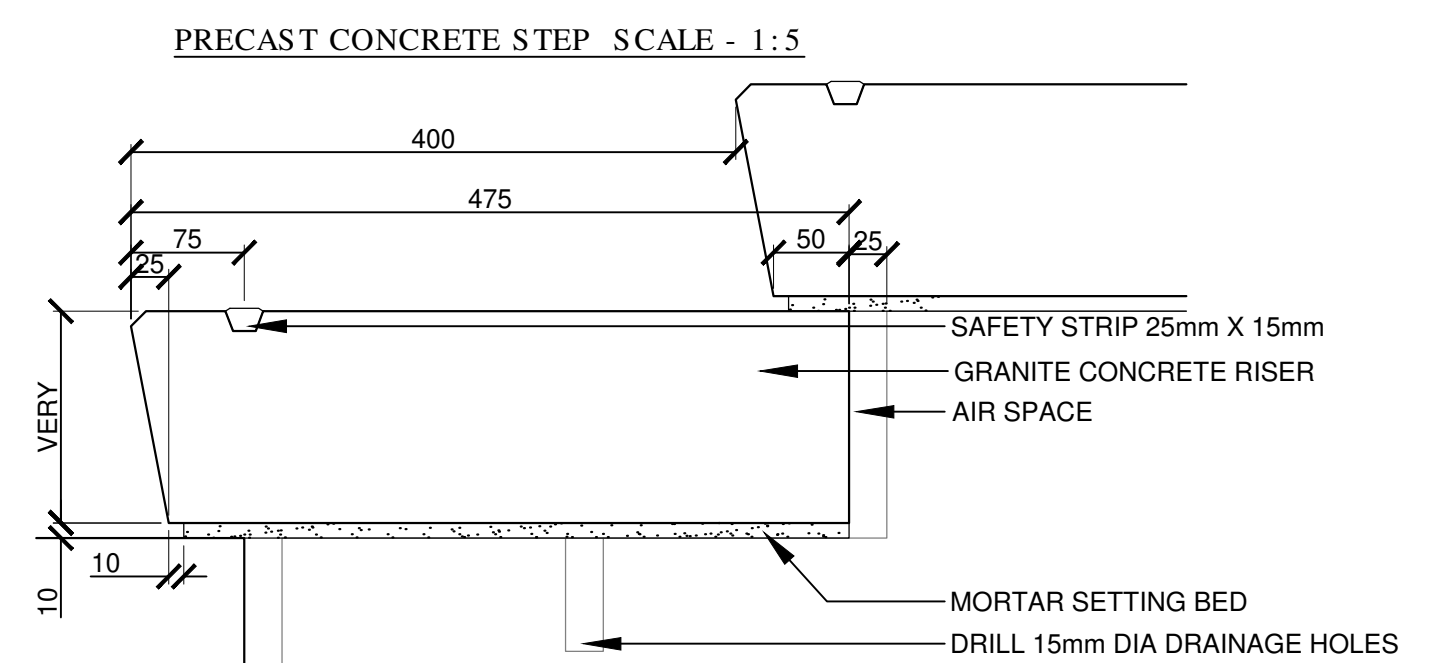
SCALE - 1:10



3 GRANITE STEPS ON C.I.P. FOOTING

3.2

SCALE - 1:20



- NOTES:
- CORE AND GROUT ANCHOR POSTS INTO 50mm DIA HOLE.
 - INSTALL BIKE RACKS PLUMB.
 - BOND IN PLACE WITH NON-SHRINK GROUT.
 - TYPICAL EMBEDMENT DEPTH TO BE 150mm. IN UNIT PAVING - CORE FULL DEPTH OF PAVER AND CUT ANCHOR POSTS TO SEAT BIKE RACK ASSEMBLY AT MOUNTING HEIGHT AS SHOWN.
 - IN UNIT PAVING CONDITION ENSURE MIN. 50mm COVER FROM CORED HOLE TO EDGE OF PAVER. WHERE PAVERS ARE LESS THAN 300x300mm IN SURFACE ARE - EPOXY ADJACENT PAVERS TOGETHER TO FORM SUFFICIENT PAVEMENT FOUNDATION.

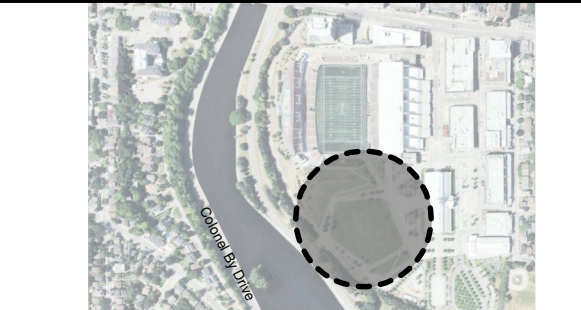
4 BIKE RING MOUNTING - UNIT PAVING CONDITION

3.2

SCALE - 1:15

NO.	DESCRIPTION	DATE
8	ISSUED FOR CITY SPA COMMENTS	2025-01-15
7	CD RELEASE	2024-12-23
6	ISSUED FOR 90% DD	2024-11-15
5	ISSUED FOR 50% DD	2024-10-18
4	ISSUED FOR 20% DD	2024-10-04
3	ISSUED FOR CITY SPA COMMENTS	2024-09-05
2	ISSUED FOR CITY SPA	2024-09-05
1	ISSUED FOR PRE-CONSULTATION	2024-05-31

REVISIONS/ ISSUES
CONTRACTOR SHALL CHECK AND VERIFY ALL DIMENSIONS AND REPORT ANY OMISSIONS OR DISCREPANCIES TO THE ARCHITECT BEFORE PROCEEDING WITH THE WORK.
DO NOT SCALE THE DRAWINGS



SEAL THIS DOCUMENT IS RELEASED FOR THE PURPOSE OF PRELIMINARY SUBMITTAL



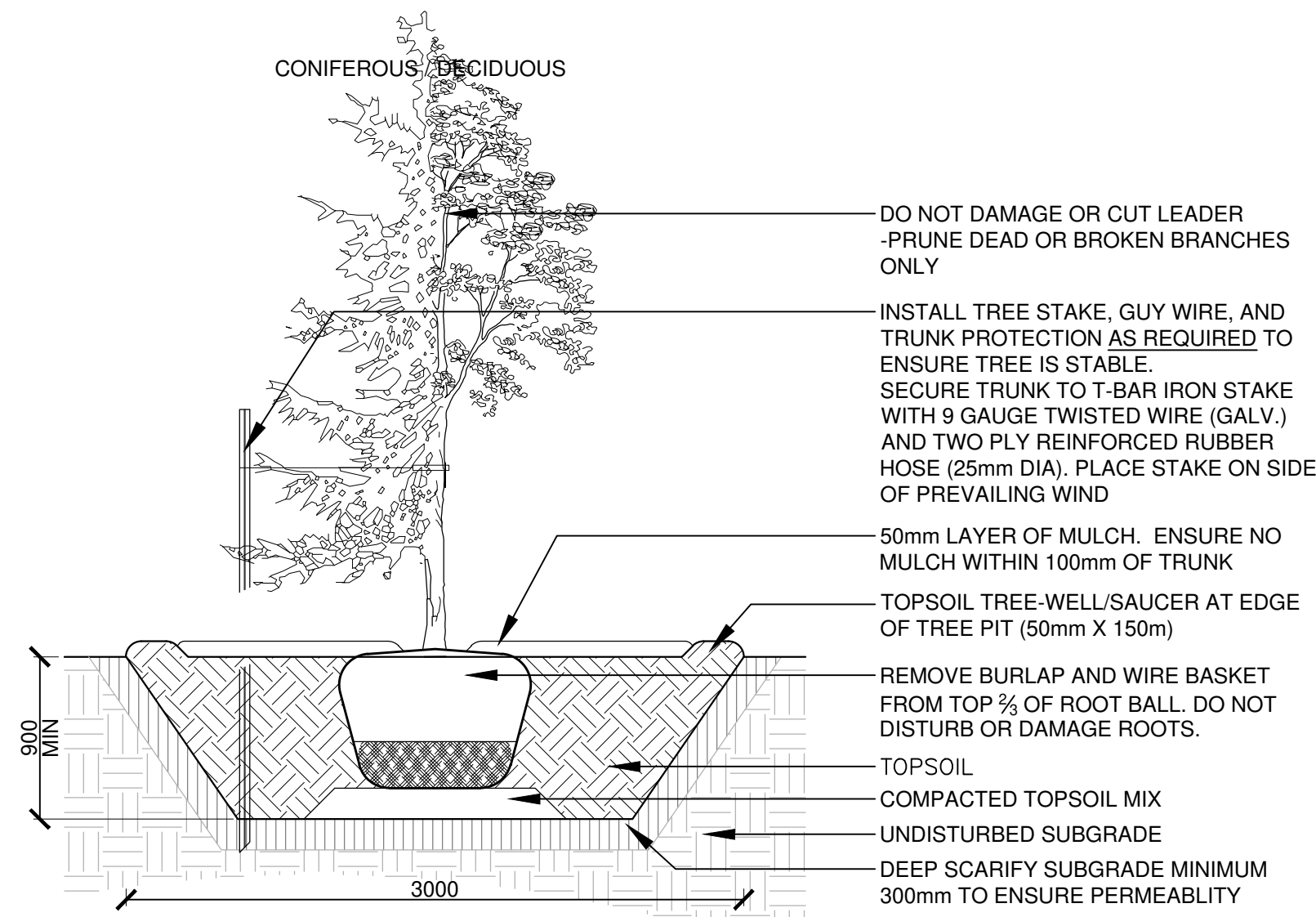
IT IS NOT TO BE USED FOR CONSTRUCTION PURPOSES

DRAWN	SE / JA
DATE	05/31/24
CHECKED	JC

LANSDOWNE 2.0
EVENT CENTRE,
NORTH SIDE STANDS AND
PUBLIC REALM
ENHANCEMENTS
945 & 1015 BANK STREET

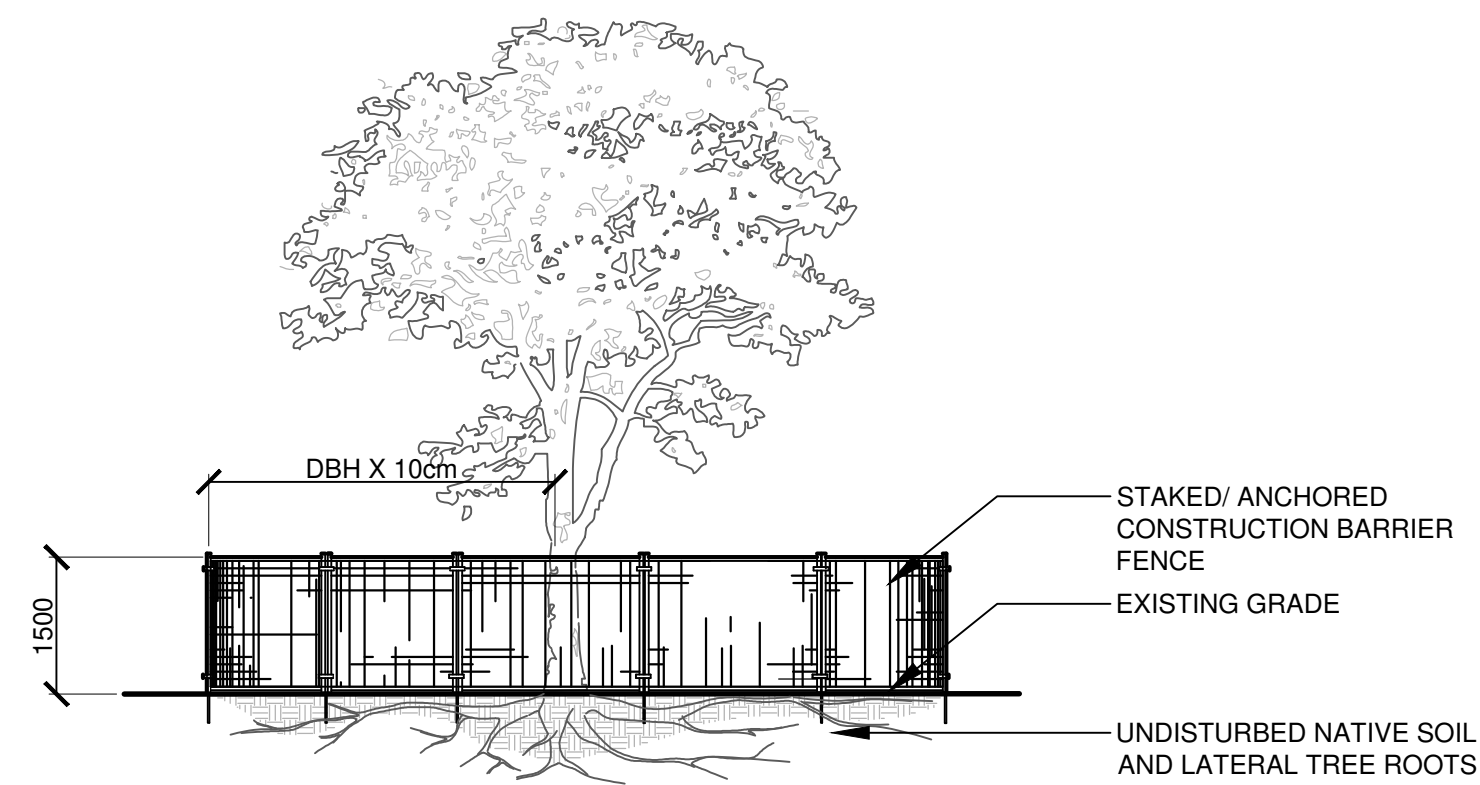
LANDSCAPE DETAILS
PROPOSED DEVELOPMENT

SCALE	AS SHOWN	DWG. NO.	EC-L3.2
PROJ. NO.	CSW #1766-12		



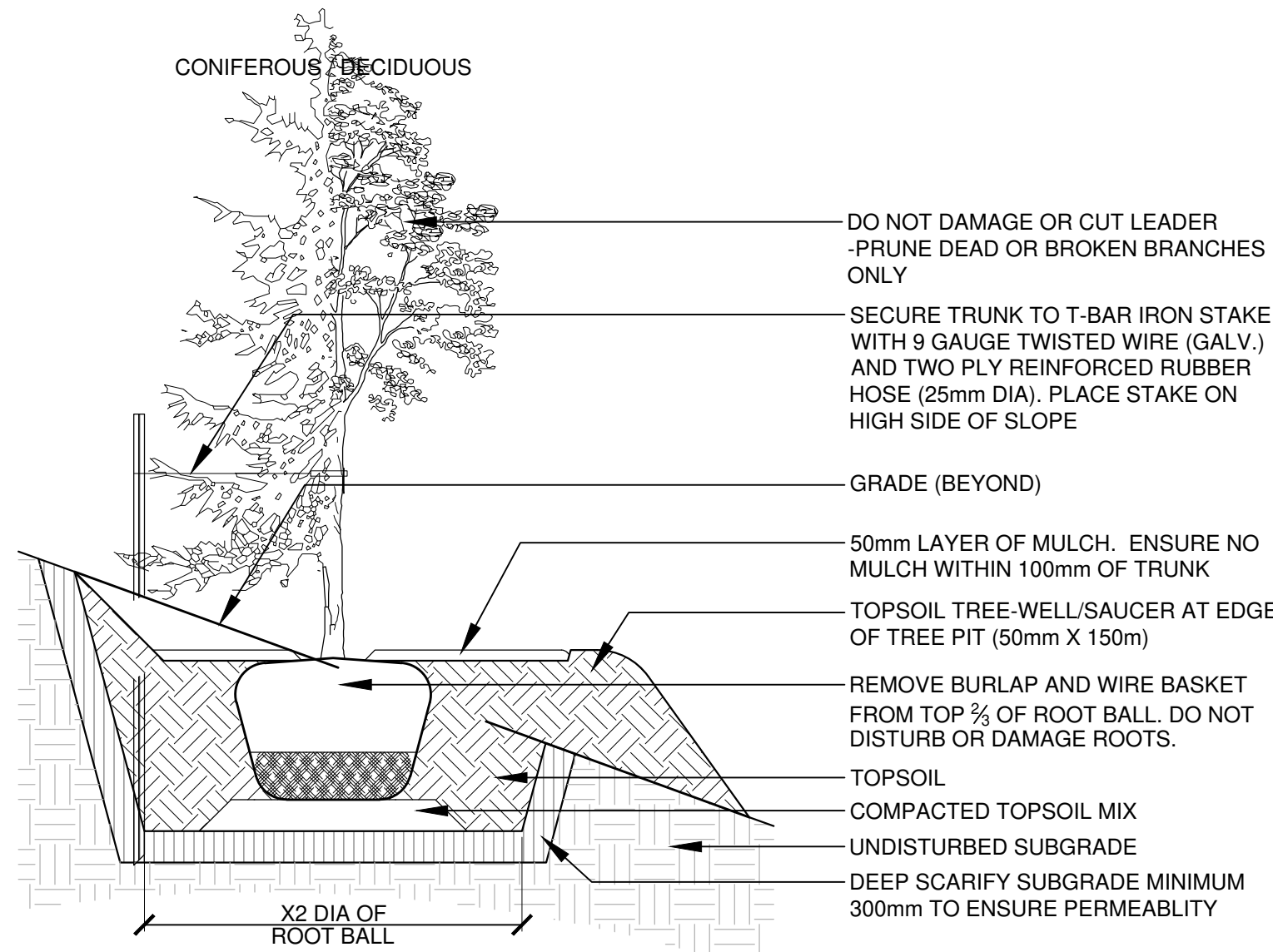
- NOTES:
- TREE STAKES ARE GENERALLY ARE TO BE USED FOR CONDITIONS WHERE THE INSTALLED TREE IS UNSTABLE AND/OR BECOMES UNSTABLE
 - ALLOW 10mm TO 25mm SLACK ON GUY WIRE SUPPORT FOR TREE
 - TOP OF ROOT BALL TO RETAIN SAME ELEVATION AS GROWING CONDITIONS
 - REMOVE STAKES ONE YEAR AFTER INSTALL
 - INSTALL STAKE BEYOND EDGE OF ROOT BALL

1 TREE PLANTING
3.3 SCALE - N.T.S.



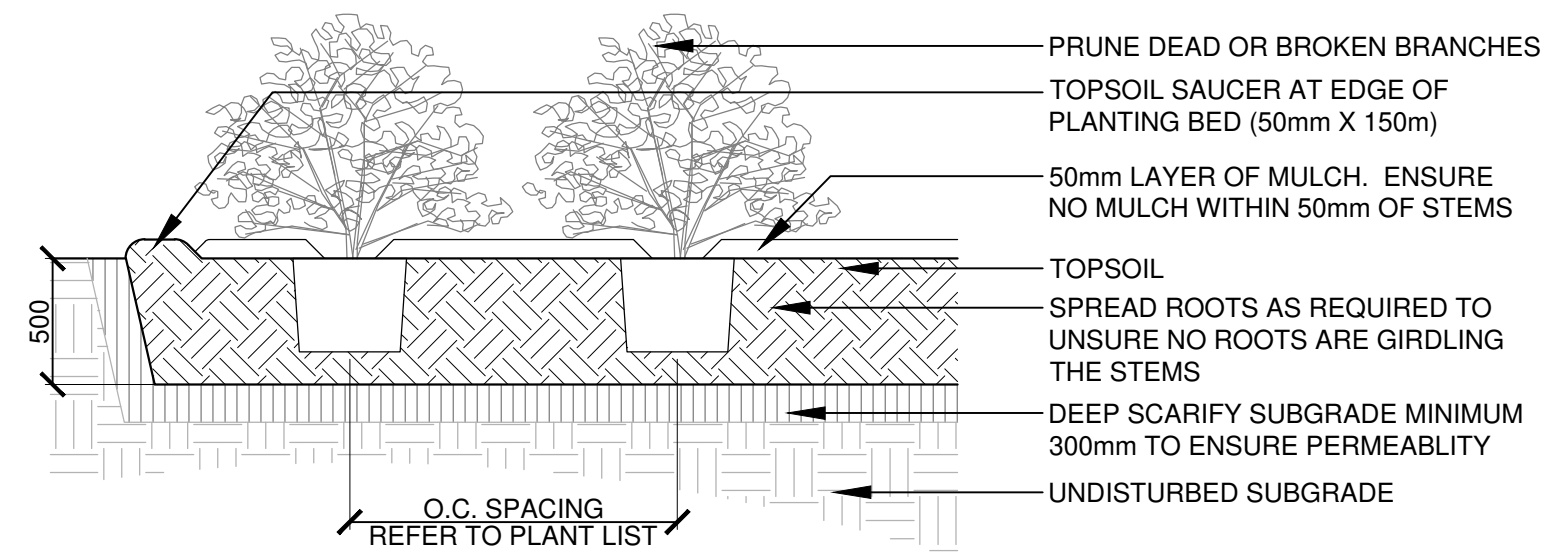
- NOTES:
- THE FOLLOWING PROTECTION MEASURES MUST BE IMPLEMENTED FOR RETAINED TREES, BOTH ON SITE AND ADJACENT SITES, PRIOR TO ANY TREE REMOVAL OR SITE WORKS AND MAINTAINED FOR THE DURATION OF CONSTRUCTION ON SITE.
1. UNDER THE GUIDANCE OF AN ARBORIST, ERECT A FENCE AT THE CRITICAL ROOT ZONE (CRZ) OF TREES WHERE THE CRZ IS ESTABLISHED AS BEING 10 CENTIMETERS FROM THE TRUNK FOR EVERY CENTIMETER OF TRUNK DIAMETER AT BREAST HEIGHT. THE CRZ IS CALCULATED AS DBH X 10cm.
 2. DO NOT PLACE ANY MATERIAL OR EQUIPMENT WITHIN THE CRZ OF THE TREE
 3. DO NOT ATTACH ANY SIGNS, NOTICES OR POSTERS TO ANY TREE
 4. DO NOT RAISE OR LOWER THE GRADE WITHIN THE CRZ WITHOUT APPROVAL
 5. TUNNEL OR BORE WHEN DIGGING WITHIN THE CRZ OF A TREE
 6. DO NOT DAMAGE THE ROOT SYSTEM, TRUNK, OR BRANCHES OF ANY TREE
 7. ENSURE THAT EXHAUST FUMES FROM ALL EQUIPMENT ARE NOT DIRECTED TOWARDS ANY TREE CANOPY

4 TREE PROTECTION FENCE
3.3 SCALE - N.T.S.



- NOTES:
- CUT AND FILL SLOPES SHALL BE 3:1 MAXIMUM
 - TOP OF ROOT BALL TO RETAIN SAME ELEVATION AS GROWING CONDITIONS
 - ALLOW 10mm TO 25mm SLACK ON GUY WIRE SUPPORT FOR TREE
 - REMOVE STAKES ONE YEAR AFTER INSTALL
 - INSTALL STAKE BEYOND EDGE OF ROOT BALL

2 TREE PLANTING ON SLOPE
3.3 SCALE - N.T.S.



- NOTES:
- TOP OF ROOT BALL TO RETAIN SAME ELEVATION AS GROWING CONDITIONS

3 SHRUB / PERENNIAL PLANTING
3.3 SCALE - N.T.S.

NO.	DESCRIPTION	DATE
8	ISSUED FOR CITY SPA COMMENTS	2025-01-15
7	CD RELEASE	2024-12-23
6	ISSUED FOR 50% DD	2024-11-15
5	ISSUED FOR 50% DD	2024-10-18
4	ISSUED FOR 20% DD	2024-10-04
3	ISSUED FOR CITY SPA COMMENTS	2024-09-05
2	ISSUED FOR CITY SPA	2024-09-05
1	ISSUED FOR PRE-CONSULTATION	2024-05-31

REVISIONS/ ISSUES

CONTRACTOR SHALL CHECK AND VERIFY ALL DIMENSIONS AND REPORT ANY OMISSIONS OR DISCREPANCIES TO THE ARCHITECT BEFORE PROCEEDING WITH THE WORK.
DO NOT SCALE THE DRAWINGS



SEAL THIS DOCUMENT IS RELEASED FOR THE PURPOSE OF PRELIMINARY SUBMITTAL



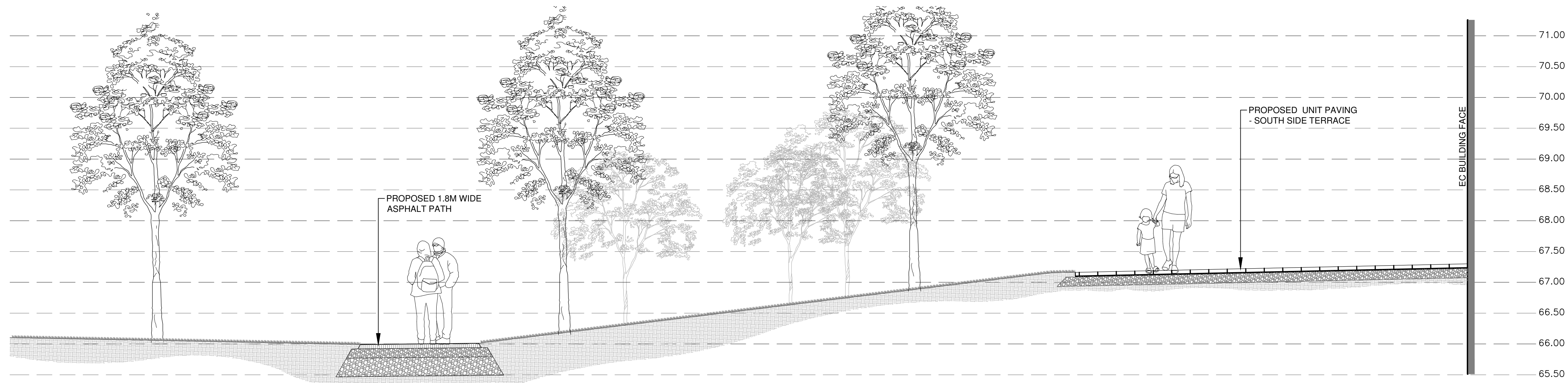
IT IS NOT TO BE USED FOR CONSTRUCTION PURPOSES

DRAWN	SE / JA
DATE	05/31/24
CHECKED	JC

LANDSDOWNE 2.0
EVENT CENTRE,
NORTH SIDE STANDS AND
PUBLIC REALM
ENHANCEMENTS
945 & 1015 BANK STREET

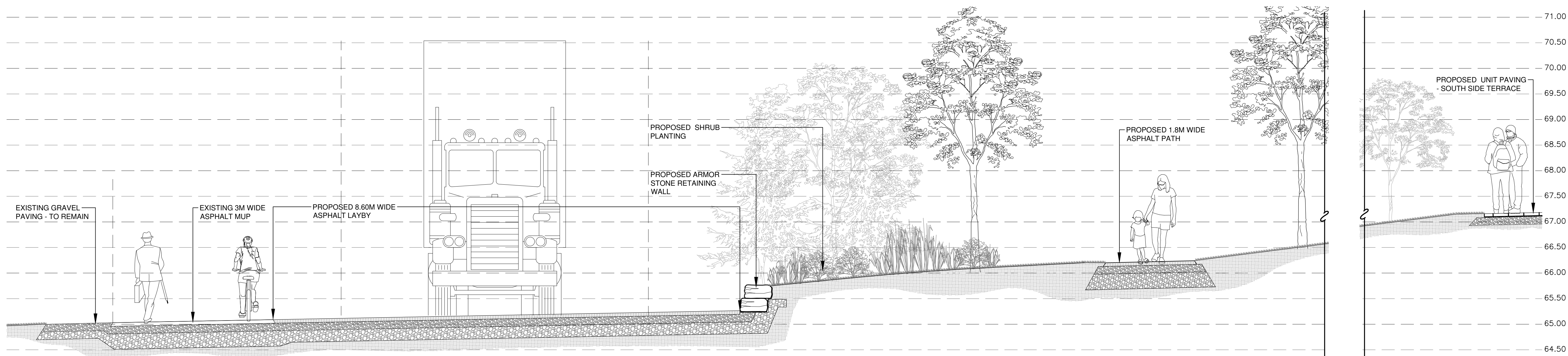
DWG. TITLE
LANDSCAPE DETAILS
PROPOSED DEVELOPMENT

SCALE	AS SHOWN	DWG. NO.	EC-L3.3
PROJ. NO.	CSW #1766-12		



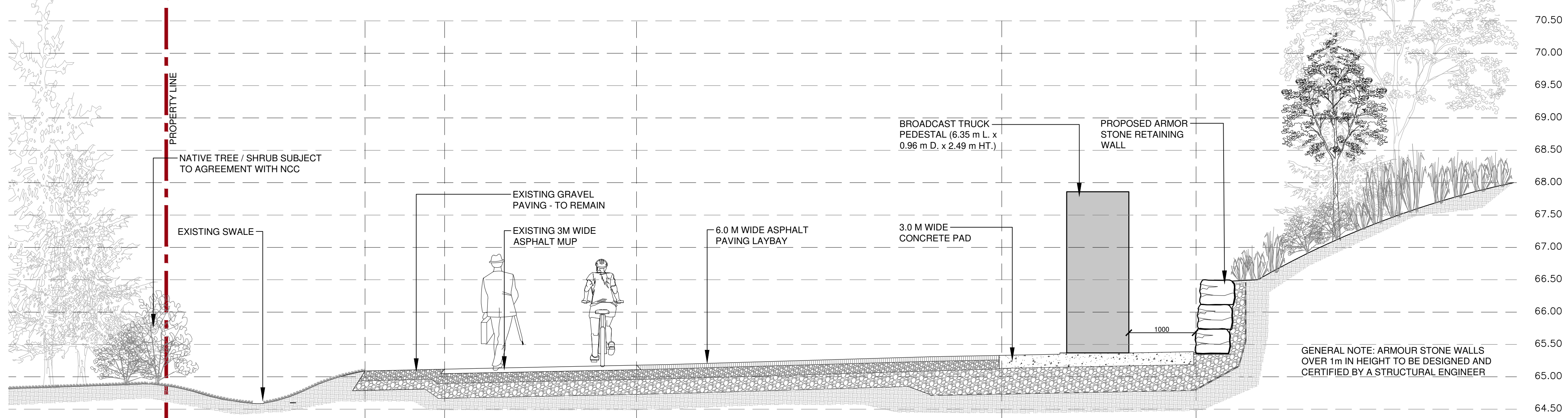
1 CROSS - SECTION 1-1
4.0

SCALE - 1 : 40



2 CROSS - SECTION 2-2
4.0

SCALE - 1 : 40



3 CROSS - SECTION 3-3
4.0

SCALE - 1 : 40

NOTE:
CROSS SECTIONS ARE INDICATIVE ONLY -
CONSTRUCTION DETAILS TO BE
DEVELOPED THROUGH CD STAGE



BRISBROOK ARCHITECTS
14 DUNCAN ST 4TH FLOOR
TORONTO, ON M5H 3G8
(416) 591-8999

ENTUITIVE
135 LAURIER AVE WEST, SUITE 413
OTTAWA, ON K1P 5J2
(343) 308-9274

TMP
200 KING ST. WEST, SUITE 310
TORONTO, ON M5H 3T4
(416) 499-8000
MECH, PLUMB, FIRE PROTECTION ENGINEER

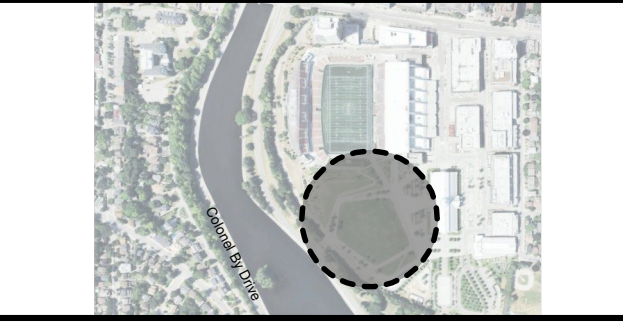
MULVEY & BANANI
90 SHEPPARD AVE EAST, SUITE 500
TORONTO, ON M2N 3A
(416) 751-2520
ELEC, LIGHTING ENGINEER

C S W
319 MCRAE AVENUE, SUITE 502
OTTAWA, ONTARIO K1Z 0B9
(613) 729-4536
LANDSCAPE ARCHITECT

KAIZEN
UNIT 14, 1525 CORNWALL RD,
OAKVILLE, ON L6J 0B2
(905) 338-3222
F&B CONSULTANT

NO.	DESCRIPTION	DATE
8	ISSUED FOR CITY SPA COMMENTS	2025-01-15
7	CD RELEASE	2024-12-23
6	ISSUED FOR 50% DD	2024-11-15
5	ISSUED FOR 50% DD	2024-10-18
4	ISSUED FOR 50% DD	2024-10-04
3	ISSUED FOR CITY SPA COMMENTS	2024-09-05
2	ISSUED FOR CITY SPA	2024-09-05
1	ISSUED FOR PRE-CONSULTATION	2024-05-31

REVISIONS/ ISSUES
CONTRACTOR SHALL CHECK AND VERIFY ALL DIMENSIONS AND REPORT ANY OMISSIONS OR DISCREPANCIES TO THE ARCHITECT BEFORE PROCEEDING WITH THE WORK.
DO NOT SCALE THE DRAWINGS



SEAL THIS DOCUMENT IS RELEASED FOR THE PURPOSE OF PRELIMINARY SUBMITTAL



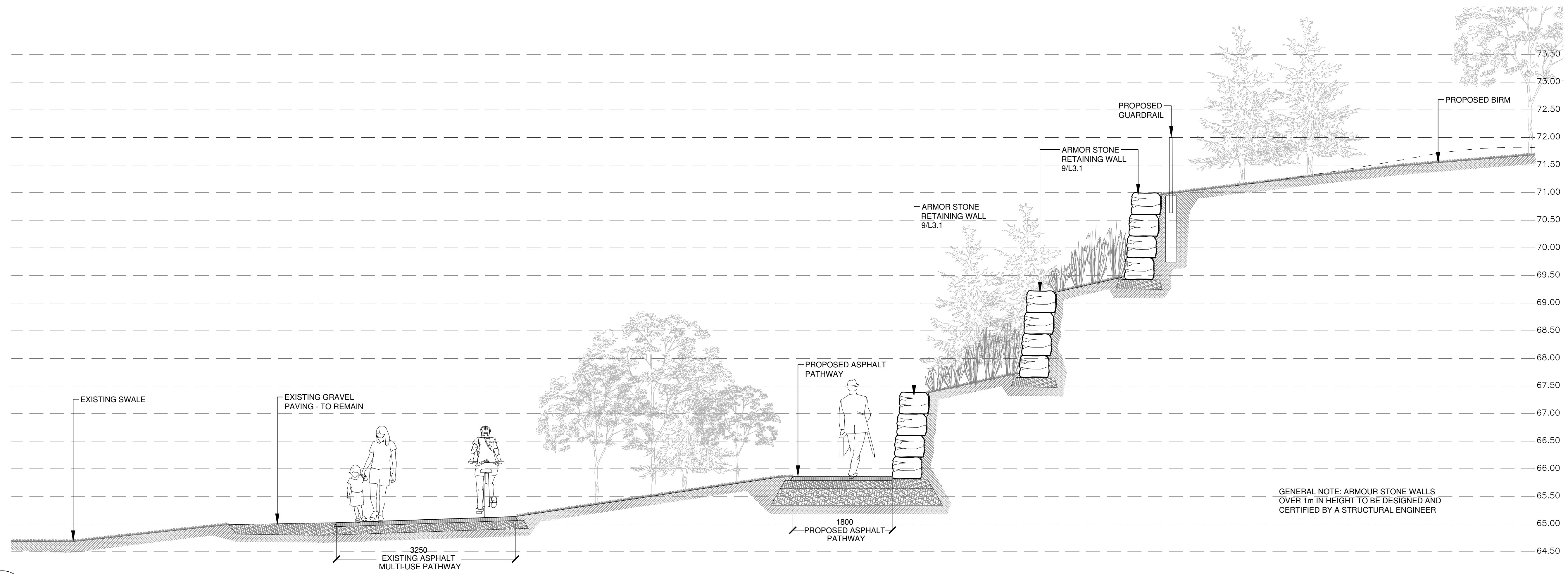
IT IS NOT TO BE USED FOR CONSTRUCTION PURPOSES

DRAWN SE / JA
DATE 05/31/24
CHECKED JC

LANSDOWNE 2.0
EVENT CENTRE,
NORTH SIDE STANDS AND
PUBLIC REALM
ENHANCEMENTS
945 & 1015 BANK STREET

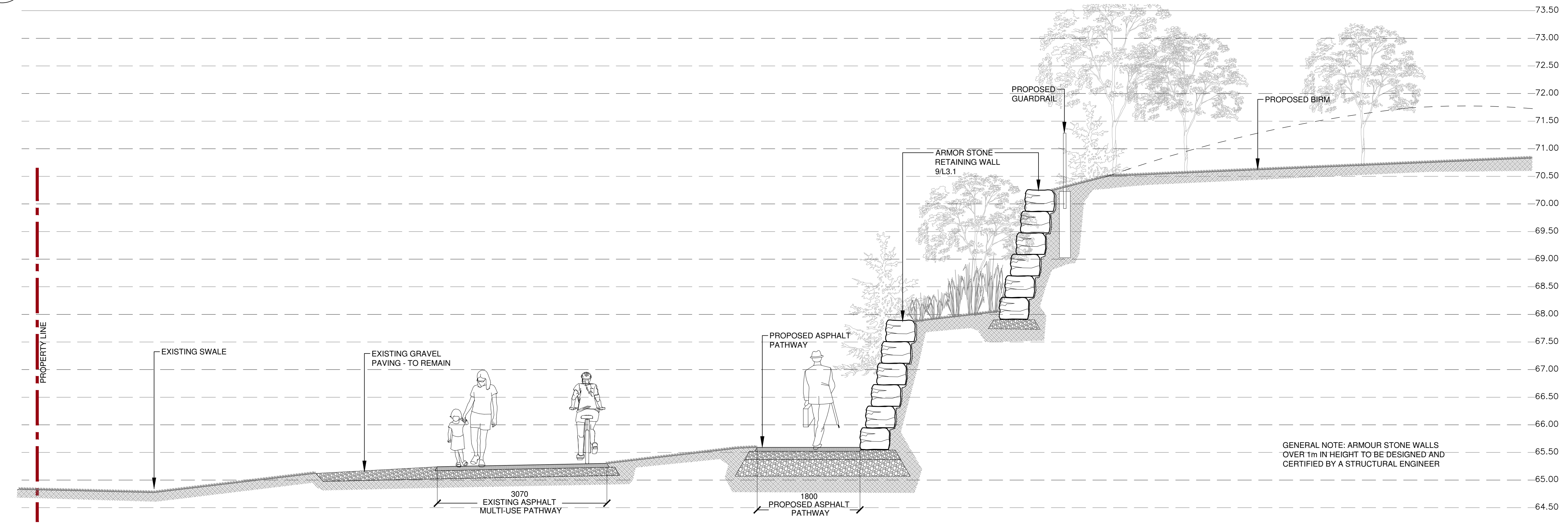
DWG. TITLE
**LANDSCAPE DETAILS
PROPOSED DEVELOPMENT
CROSS-SECTIONS**

SCALE AS SHOWN
PROJ. NO. CSW #1766-12
DWG. NO. EC-L4.0



1 CROSS - SECTION 4-4
4.1

SCALE - 1 : 40



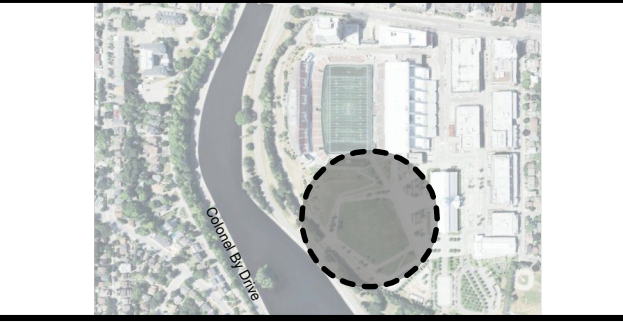
2 CROSS - SECTION 5-5
4.1

SCALE - 1 : 40

NOTE: CROSS SECTIONS ARE INDICATIVE ONLY -
CONSTRUCTION DETAILS TO BE DEVELOPED THROUGH CD STAGE

NO.	DESCRIPTION	DATE
8	ISSUED FOR CITY SPA COMMENTS	2025-01-15
7	CD RELEASE	2024-12-23
6	ISSUED FOR 90% DD	2024-11-15
5	ISSUED FOR 50% DD	2024-10-18
4	ISSUED FOR 30% DD	2024-10-04
3	ISSUED FOR CITY SPA COMMENTS	2024-09-05
2	ISSUED FOR CITY SPA	2024-09-05
1	ISSUED FOR PRE-CONSULTATION	2024-05-31

REVISIONS/ ISSUES
CONTRACTOR SHALL CHECK AND VERIFY ALL DIMENSIONS AND REPORT ANY OMISSIONS OR DISCREPANCIES TO THE ARCHITECT BEFORE PROCEEDING WITH THE WORK.
DO NOT SCALE THE DRAWINGS



SEAL THIS DOCUMENT IS RELEASED FOR THE PURPOSE OF PRELIMINARY SUBMITTAL



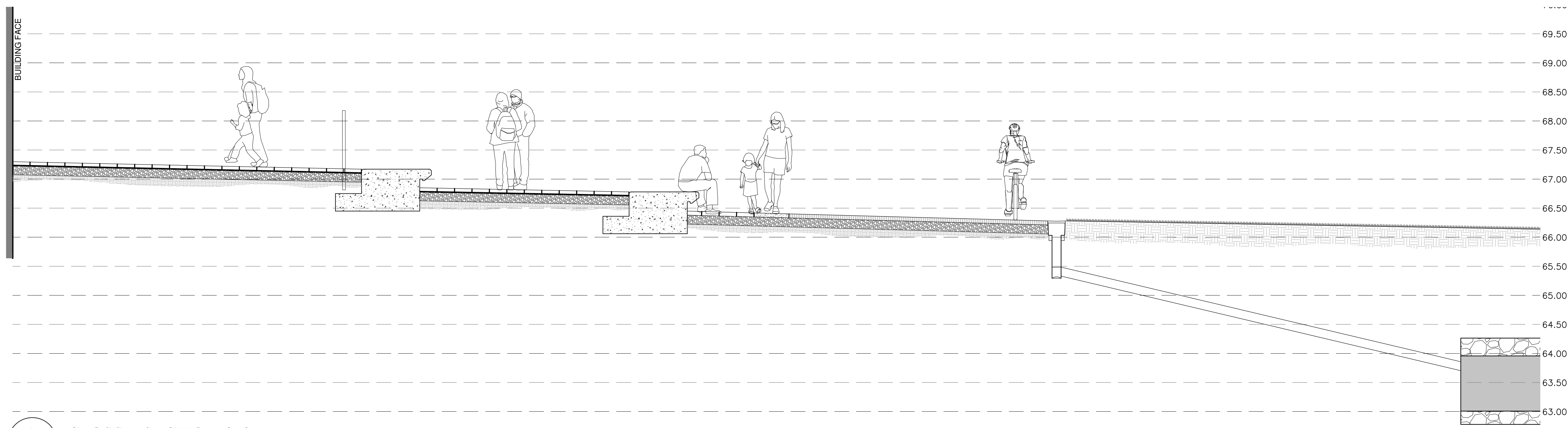
IT IS NOT TO BE USED FOR CONSTRUCTION PURPOSES

DRAWN	SE / JA
DATE	05/31/24
CHECKED	JC

LANSDOWNE 2.0
EVENT CENTRE,
NORTH SIDE STANDS AND
PUBLIC REALM
ENHANCEMENTS
945 & 1015 BANK STREET

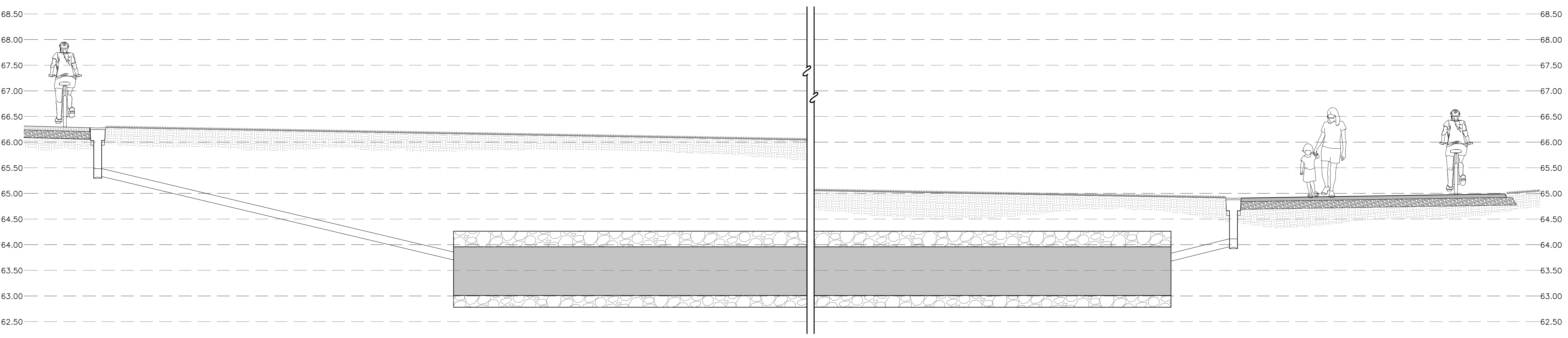
DWG. TITLE
**LANDSCAPE DETAILS
PROPOSED DEVELOPMENT
CROSS-SECTIONS**

SCALE	AS SHOWN	DWG. NO.	EC-L4.1
PROJ. NO.	CSW #1766-12		



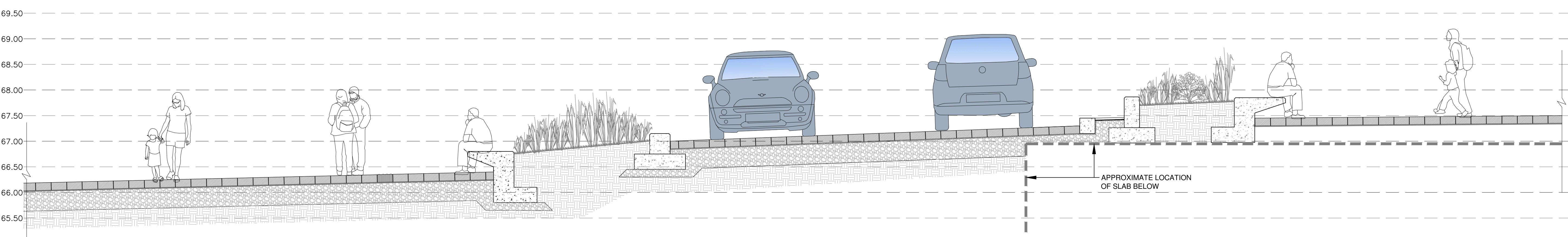
1 CROSS - SECTION 6-6
4.2

SCALE - 1 : 40



2 CROSS - SECTION 7-7
4.2

SCALE - 1 : 40



3 CROSS - SECTION 8-8
4.2

SCALE - 1 : 40

NOTE: CROSS SECTIONS ARE INDICATIVE ONLY -
CONSTRUCTION DETAILS TO BE DEVELOPED THROUGH CD STAGE



**BRISBIN
BROOK
BEYON**
ARCHITECTS
14 DUNCAN ST 4TH FLOOR
TORONTO, ON M5H 3G8
(416) 591-8999 ARCHITECT

ENTUITIVE
135 LAURIER AVE WEST, SUITE 413
OTTAWA, ON K1P 5J2
(343) 308-9274
STRUCTURAL ENGINEER

TMP
200 KING ST. WEST, SUITE 310
TORONTO, ON M5H 3T4
(416) 499-8000
MECH, PLUMB, FIRE PROTECTION ENGINEER

MULVEY & BANANI
90 SHEPPARD AVE EAST, SUITE 500
TORONTO, ON M2N 3A
(416) 751-2520
ELEC, LIGHTING ENGINEER

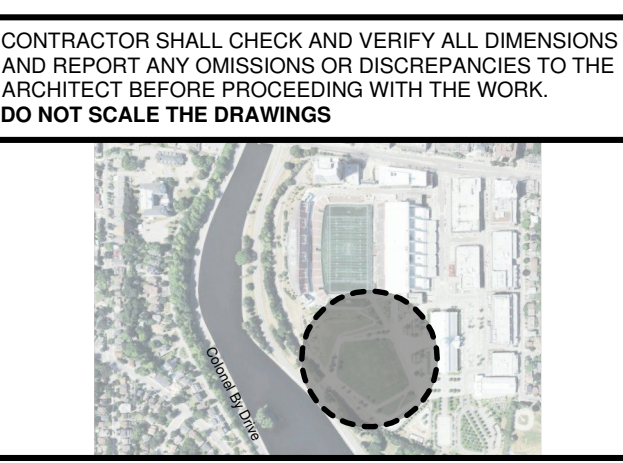
C S W
319 MCRAE AVENUE, SUITE 502
OTTAWA, ONTARIO K1Z 0B9
(613) 729-4536
LANDSCAPE ARCHITECT

KAIZEN
UNIT 14, 1525 CORNWALL RD.
OAKVILLE, ON L6J 0B2
(905) 338-3222
F&B CONSULTANT

NO.	DESCRIPTION	DATE
8	ISSUED FOR CITY SPA COMMENTS	2025-01-15
7	CD RELEASE	2024-12-23
6	ISSUED FOR 50% DD	2024-11-15
5	ISSUED FOR 50% DD	2024-10-18
4	ISSUED FOR 50% DD	2024-10-04
3	ISSUED FOR CITY SPA COMMENTS	2024-09-05
2	ISSUED FOR CITY SPA	2024-09-05
1	ISSUED FOR PRE-CONSULTATION	2024-05-31

REVISIONS/ ISSUES

CONTRACTOR SHALL CHECK AND VERIFY ALL DIMENSIONS AND REPORT ANY OMISSIONS OR DISCREPANCIES TO THE ARCHITECT BEFORE PROCEEDING WITH THE WORK.
DO NOT SCALE THE DRAWINGS



SEAL THIS DOCUMENT IS RELEASED FOR THE PURPOSE OF PRELIMINARY SUBMITTAL



IT IS NOT TO BE USED FOR CONSTRUCTION PURPOSES

DRAWN SE / JA
DATE 05/31/24
CHECKED JC

LANSDOWNE 2.0
EVENT CENTRE,
NORTH SIDE STANDS AND
PUBLIC REALM
ENHANCEMENTS
945 & 1015 BANK STREET

DWG. TITLE
**LANDSCAPE DETAILS
PROPOSED DEVELOPMENT
CROSS-SECTIONS**

SCALE AS SHOWN DWG. NO. EC-L4.2
PROJ. NO. CSW #1766-12